

LANCASTER BLDG. DIST. NO. 8

PROFILE ALIGNMENT AND GRADE OF **P.C. 4758**
SANITARY SEWERS PAGE **1**
 TO BE CONSTRUCTED IN
TRACT No. 20923

- NOTES:**
- PROVIDE STAKES ON THE PROPERTY LINE OR PROPERTY LINES PRODUCED AT RIGHT ANGLES TO THE SEWER LINE AT THE CENTER LINE OF EACH MANHOLE.
 - NO REPRESENTATIVE OF THE COUNTY ENGINEER WILL SURVEY OR LAYOUT ANY PORTION OF THE WORK.
 - THE OWNER OR HIS AUTHORIZED REPRESENTATIVE SHALL FURNISH THE COUNTY ENGINEER WITH GRADE SHEETS AND STATION FOR ALL HOUSE LATERALS AND Y BRANCHES AND SHALL PROVIDE STAKES FOR THEM AT THREE PROPER LOCATIONS WITH STATIONING PLAINLY MARKED. ANY CHANGE IN LOCATION SHALL BE REQUESTED BY WRITING BY THE OWNER OR HIS REPRESENTATIVE. NO REVISIONS SHALL BE MADE IN THESE PLANS WITHOUT THE APPROVAL OF THE COUNTY ENGINEER.
 - USE STANDARD MANHOLE FRAMES AND COVERS, S.A.-117, EXCEPT AS NOTED.
 - USE STANDARD STRENGTH PIPE EXCEPT AS NOTED.
 - USE CEMENT MORTAR OR "WEDGE-LOCK" OR "SPREAD-SEAL" FOR ALL VERTICAL CURB JOINTS, AS SHOWN IN SECTION "A" AND "B".
 - REINFORCE ALL TRENCH WITHIN PAVED AREA TO MEET L.A. COUNTY ROAD DEPT., OR CALIF. STATE HIGHWAY DEPT. REQUIREMENTS IN ACCORDANCE WITH PERMITS.
 - ENCASE FOUR FEET OF SEWER AT POINTS OF INTERFERENCE WITH POLES, S.A.-119.
 - HOUSE LATERALS TO BE CONSTRUCTED WITH INVERTS AT PROPERTY LINE FEET BELOW CURB GRADE EXCEPT AS NOTED.
 - ALL STRUCTURES SHALL BE BRICK SEWER STRUCTURES, S.A.-194, EXCEPT AS NOTED.
 - FOR ALLOWABLE LEAKAGE TEST USE FORMULA NO. SPEC. 5, SEC. 54
 - MANHOLE TOPS IN IMPROVED RIGHTS-OF-WAY TO BE 4" ABOVE FINISHED GRADE.

PRIVATE CONTRACT NO. 4758

W.S. 70
 2 SHEETS, 4 PAGES
 SCALE: VERT. 1"=6' HORIZ. 1"=60' APRIL, 1958
 PREPARED IN THE OFFICES OF
Par-American Engineering Associates
 BY J. Ramirez REG. C. E. NO. 12723
 FOR LEGEND SEE PLAN NO. S-A-64

ALL PIPE JOINTS WITH FOUR INCH CEMENT MORTAR THAT ARE WITHIN TWENTY FEET OF ALL PROPERTY LINES OR WITHIN SANITARY SEWER RIGHTS-OF-WAY EXCEPT WHEN USING WEDGE-LOCK OR SPREAD-SEAL JOINTS

NOTE:
 THE CONTRACTOR SHALL NOTIFY THE CONSTRUCTION AND STORM DRAIN DIVISION BY TELEPHONE WHITEWALL 5-8401, EXT. 40 AT LEAST 24 HOURS BEFORE STARTING ANY WORK UNDER THIS CONTRACT.

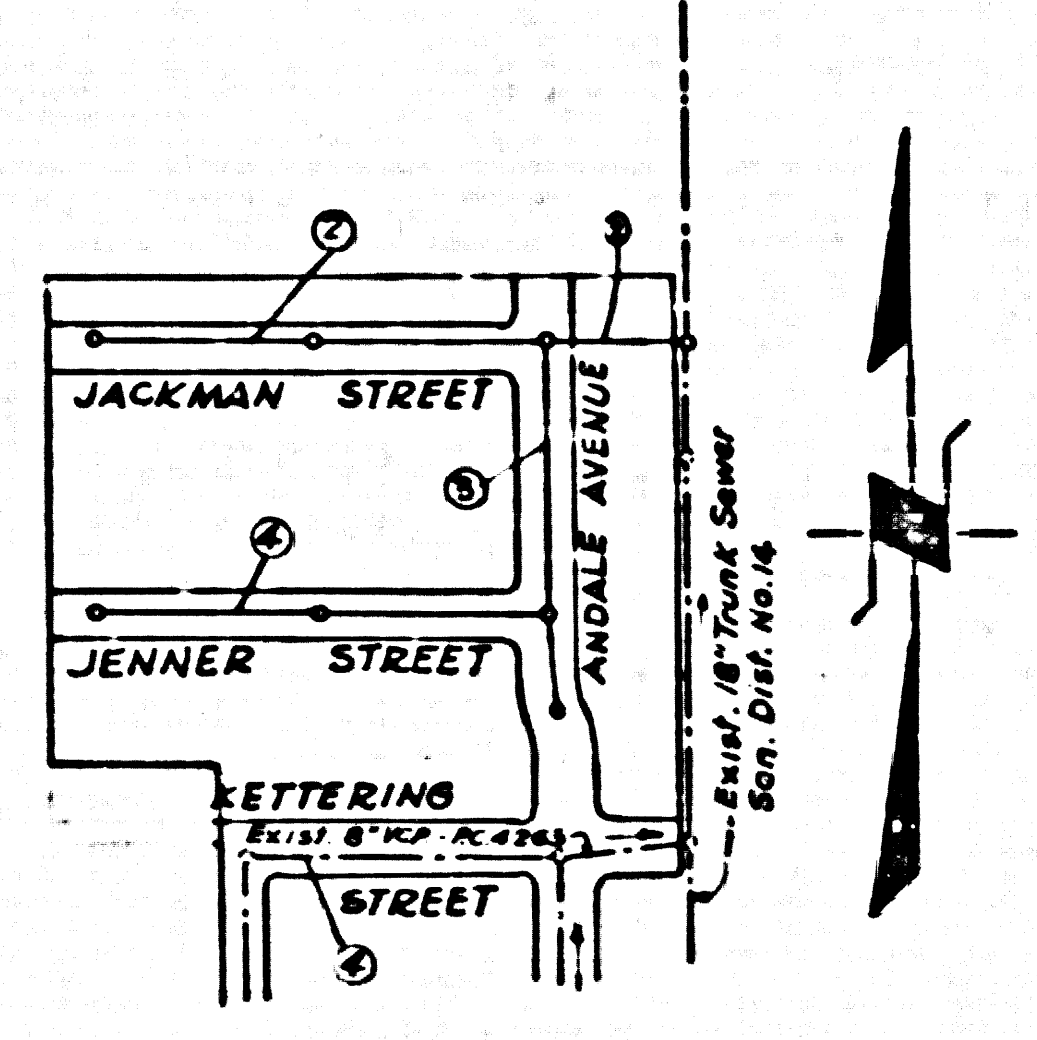
NO CHARGE FOR CONNECTIONS
 4-17-58

Before breaking into any existing structure and before final acceptance of this work, County Sanitation District should be notified in order that required inspection may be made.

NOTE:
 GRADES TO WHICH THE IMPROVEMENT IS TO BE CONSTRUCTED ARE SHOWN ON PLANS AND PROFILES. GRADE POINTS FOR TOP OF CURB, CENTER LINE OF STREETS, OR CENTER LINE OF ALLEYS ARE SHOWN BY CIRCLES ON PROFILES AT ALL POINTS BETWEEN DESIGNATED POINTS THE GRADE SHALL BE ESTABLISHED SO AS TO CONFORM TO A STRAIGHT LINE DRAWN BETWEEN SAID DESIGNATED POINTS.
 ELEVATIONS ARE IN FEET ABOVE M.S.C.B. UNLESS OTHERWISE SPECIFIED.
 THIS DRAWING AND THE DATA HEREON ARE HEREBY MADE A PART OF THE SPECIFICATIONS.
 WORK SHALL BE CONSTRUCTED ACCORDING TO SPECIFICATIONS ON FILE IN THE OFFICE OF THE COUNTY ENGINEER AND SHALL BE PRODUCED ONLY IN THE PRESENCE OF THE COUNTY ENGINEER.
 BEFORE WORK CAN BE STARTED, THE CONTRACTOR MUST OBTAIN A PERMIT TO EXCAVATE IN COUNTY STREETS FROM THE L.A. COUNTY ROAD DEPT., 100 W. 7TH ST. AND MAKE A DEPOSIT WITH THE COUNTY ENGINEER, ROOM 154 PAR-AMERICAN BLDG., 333 S.D. BROADWAY SUFFICIENT TO COVER THE COST OF CONSTRUCTION INSPECTION AND RECORD PLANS.
 APPROVAL OF THIS PLAN BY THE COUNTY OF LOS ANGELES DOES NOT CONSTITUTE A REPRESENTATION AS TO THE ACCURACY OF THE LOCATION OF OR THE EXISTENCE OR NON-EXISTENCE OF ANY UNDERGROUND UTILITY PIPE, OR STRUCTURE WITHIN THE LIMITS OF THIS PROJECT. THIS NOTE APPLIES TO ALL PAGES.
 IF WORK IS TO BE DONE IN A STATE HIGHWAY, A PERMIT MUST BE OBTAINED FROM THE STATE OF CALIFORNIA, DIVISION OF HIGHWAYS, 120 SOUTH SPRING STREET.

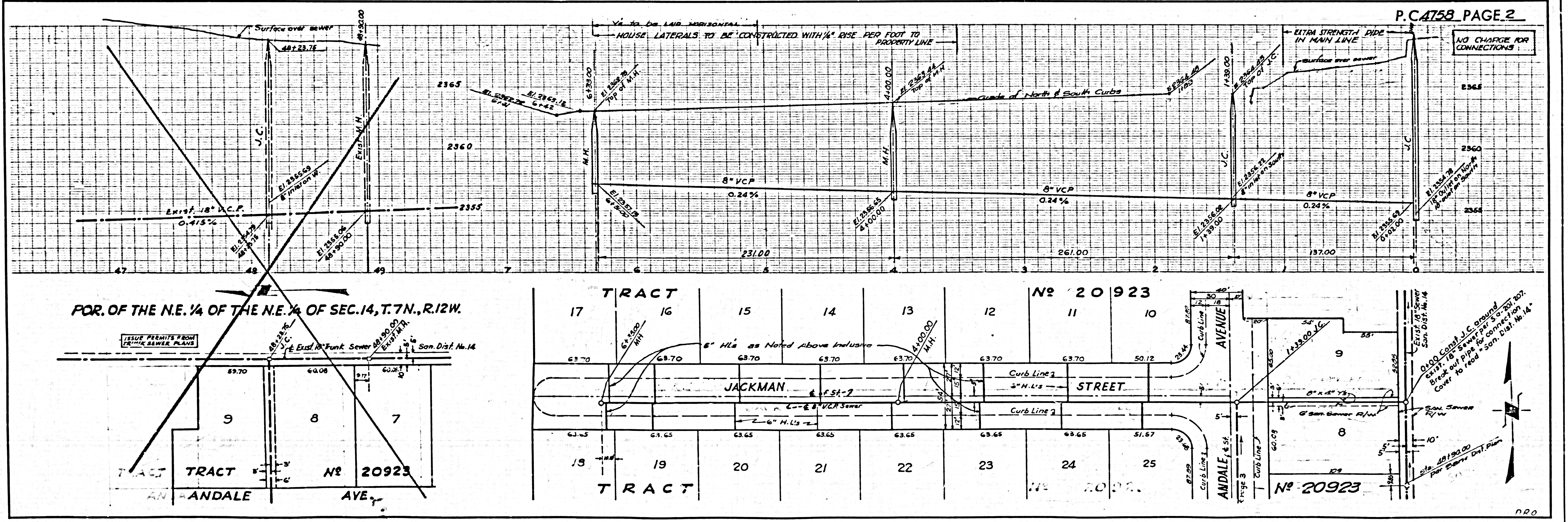
COUNTY OF LOS ANGELES, CALIFORNIA
 APPROVED, JOHN A. LAMBE, COUNTY ENGINEER
 APPROVED, A. M. BAWN, CHIEF ENGINEER
 BY S. Hughes SANITATION ENGINEER
 BY A. M. Bawn CHIEF ENGINEER
 CHECKED BY W. W. W. W. 4-10-58
 OFFICE OF COUNTY ENGINEER, REG. C. E. NO. 2506

RECOMMENDED BY: R. E. V. V. 4-17-58
 REGIONAL ENGINEER



INDEX MAP
 TRACT No. 20923
 P.C. 4758
 SCALE: 1" = 300'

B.M. SLGI SLM'S PAGE 30 2379.667 ADJ. 1956
 F.D. BRASS CAP IN CONCRETE MONUMENT 220 FEET @ INTERSECTION OF LANCASTER BLDG. AND 10TH STREET EAST
 NOTE: B.M. SLGI ADJ. ELEV. 1957 - 2378.805



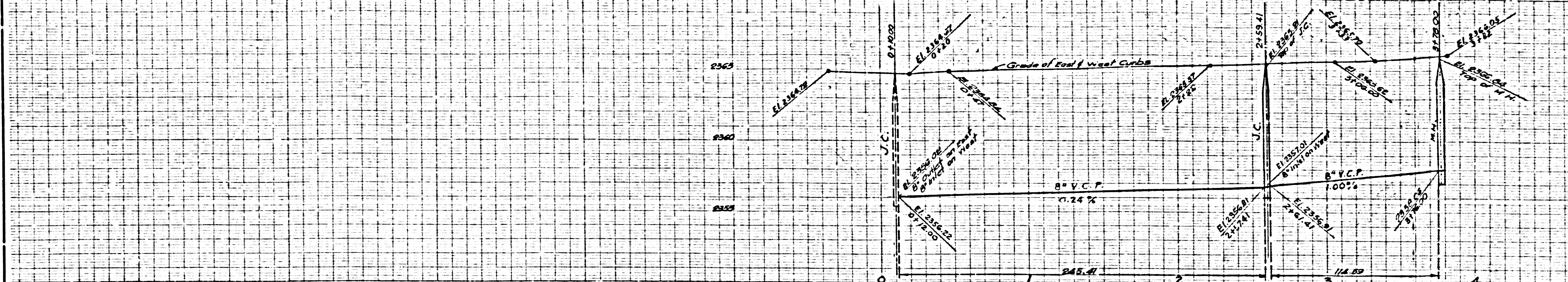
FOR THE N.E. 1/4 OF THE N.E. 1/4 OF SEC. 14, T. 7N., R. 12W.
 ISSUE PERMITS FROM EXISTING SEWER PLANS

TRACT		No. 20923									
17	16	15	14	13	12	11	10	9	8	7	6
63.70	63.70	63.70	63.70	63.70	63.70	63.70	63.70	50.12	51.57	51.57	51.57
19	19	20	21	22	23	24	25				
63.65	63.65	63.65	63.65	63.65	63.65	63.65	63.65				

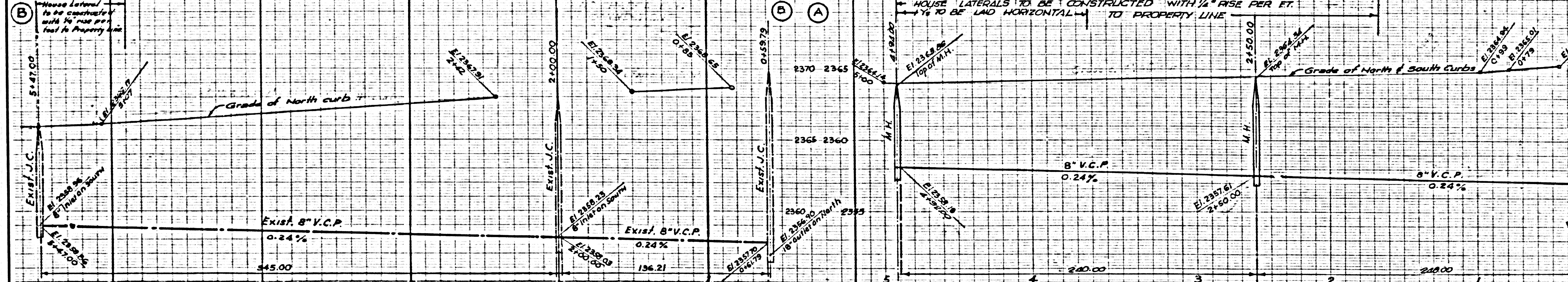
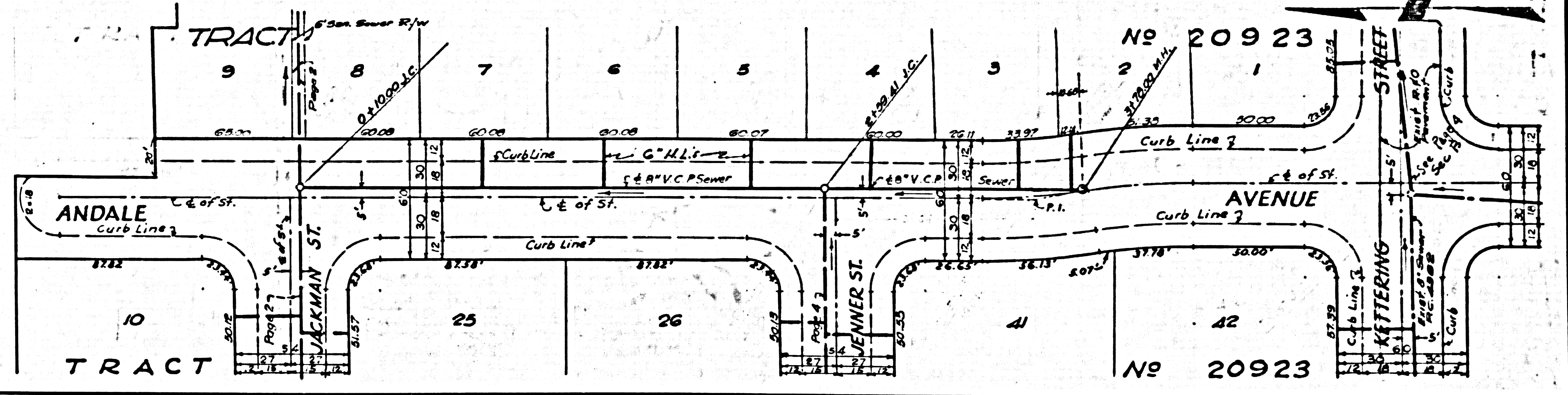
P.C. 4758 PAGE 2

NO CHARGE FOR CONNECTIONS

0.000 Const. J.C. ground
 Break out pipe for connection
 Cover to Road - 300' Dist. No. 14



NO CHARGE FOR CONNECTIONS



NO CHARGE FOR CONNECTIONS

