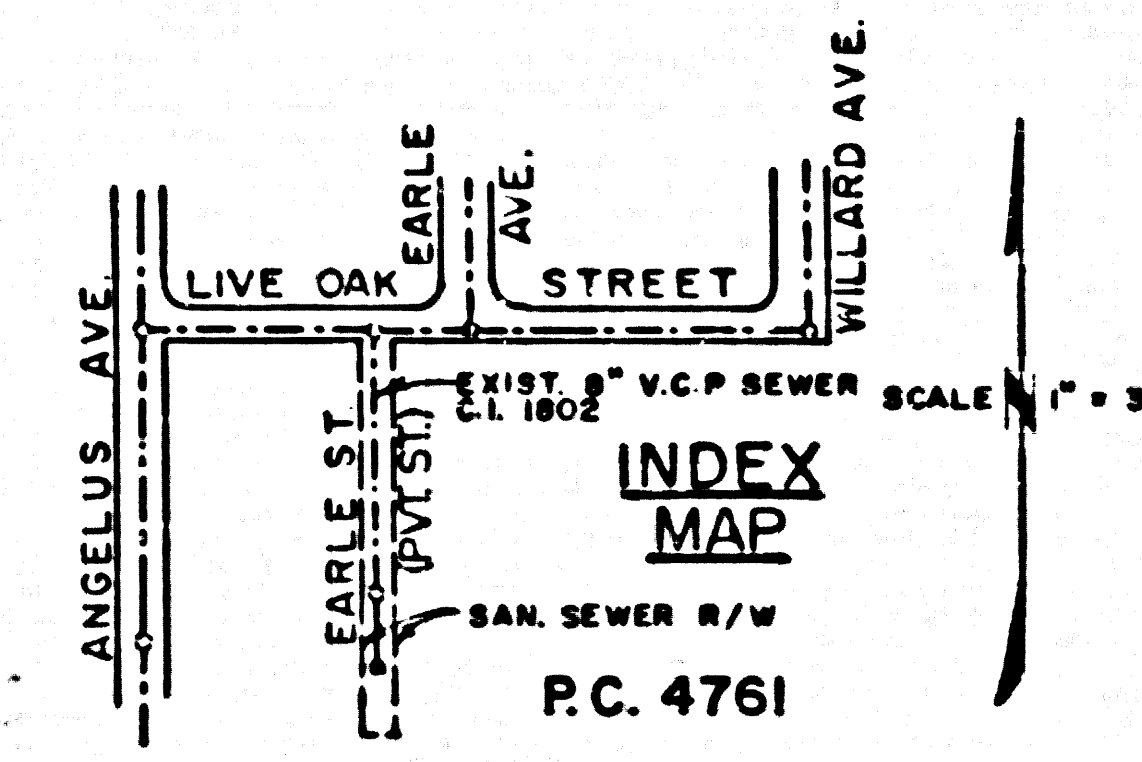


B.M. - TE-914, ELEV. 401.703, FB.1642,
P.G. 48, BROADWAY (NO. SIDE) AT WILLARD
AVE. BY SPK. IN CURB AT W. SIDE OF DRIVE.



TEMPLE CITY BLDG. DIST. NO. 5

- NOTES:
- PROVIDE STAKES ON THE PROPERTY LINE OR PROPERTY LINES PRODUCED AT RIGHT ANGLES TO THE SEWER LINE AT THE CENTER LINE OF EACH MANHOLE.
 - NO REPRESENTATIVE OF THE COUNTY ENGINEER WILL SURVEY OR LAYOUT ANY PORTION OF THE WORK.
 - THE OWNER OR HIS AUTHORIZED REPRESENTATIVE SHALL FURNISH THE COUNTY ENGINEER WITH GRADE SHEETS AND STATION FOR ALL HOUSE LATERALS AND Y BRANCHES AND SHALL PROVIDE STAKES FOR THEM AT THEIR PROPER LOCATIONS WITH STATIONING PLAINLY MARKED. ANY CHANGE IN LOCATION SHALL BE REQUESTED IN WRITING BY THE OWNER OR HIS REPRESENTATIVE.
 - NO REVISIONS SHALL BE MADE IN THESE PLANS WITHOUT THE APPROVAL OF THE COUNTY ENGINEER.
 - USE STANDARD MANHOLE FRAMES AND COVERS, S.A.-117, SERIES 48-117-100.
 - USE STANDARD STRENGTH PIPE SHIPPED AS SHOWN.
 - USE CEMENT MORTAR OR "WEDGE LOCK" OR "SPEED-SEAL" FOR ALL V.C.P. JOINTS PER SPECS., SECT. 36 B 48.
 - RESURFACE ALL TRENCH WITHIN PAVED AREA TO MEET L. A. COUNTY ROAD DEPT., OR CALIF. STATE HIGHWAY DEPT. REQUIREMENTS IN ACCORDANCE WITH PERMITS.
 - SHOULDER FOUR FEET OF SEWER AT POINTS OF INTERFERENCE WITH POLES, CASE III, S-A-172.
 - "Y'S" TO BE LAID HORIZONTAL. HOUSE LATERALS TO BE CONSTRUCTED WITH 1/4" RISE PER FT. TO R/W LINE.
 - ALL MANHOLES SHALL BE 36" HIGH, CONCRETE, S.A.-117, SERIES 48-117-100.
 - FOR ALLOWABLE SLOPES PER USE FORMULA, SEE SPECS., SEC. 24.
 - MANHOLE TOPS IN UNIMPROVED RIGHTS-OF-WAY TO BE 4" ABOVE FINISH GRADE.
 - THE PRIVATE ENGINEER SHALL FURNISH THE HOUSE LATERAL DEPTH AT THE R/W LINE BELOW THE GRADE OF 4" OF R/W.
 - RESURFACE ALL TRENCHES WITHIN PAVED AREA WITH PREMIX ROCK AND OIL 2" IN THICKNESS.
 - BACKFILL MATERIAL SHALL BE FLOODED OR TAMPED TO OBTAIN COMPACTION EQUAL TO THAT OF THE UNDISTURBED MATERIAL.

THE CONTRACTOR SHALL NOTIFY THE CONSTRUCTION AND STORM DRAIN DIVISION BY TELEPHONE, MADISON 9-4747 EXT 362, AT LEAST 24 HOURS BEFORE STARTING ANY WORK UNDER THIS CONTRACT.

NO CHARGE FOR CONNECTIONS
L. Curtis 5-14-58

PROFILE ALIGNMENT AND GRADE OF P.C. 4761
SANITARY SEWERS PAGE 1

TO BE CONSTRUCTED IN
A SANITARY SEWER RIGHT-OF-WAY
SOUTH OF EARLE STREET

PRIVATE CONTRACT NO. 4761

W.S. 44
1 SHEET 2 PAGES

SCALE: VERT. 1" = 4'
HORIZ. 1" = 40' APRIL, 1958

PREPARED IN THE OFFICES OF
ALDERMAN & SWIFT
CONSULTING ENGINEERS
SOUTH PASADENA, CALIFORNIA

BY *J. H. Alderman*
REG. C. E. NO. 5339

FOR LEGEND SEE PLAN NO. S-A-64

NOTES:

GRADES TO WHICH THIS IMPROVEMENT IS TO BE CONSTRUCTED ARE SHOWN ON PLANS AND PROFILE. GRADE POINTS FOR TOP OF CURB, CENTER LINE OF STREET, OR CENTER LINE OF ALLEYS ARE SHOWN IN CIRCLES ON PROFILES AT ALL POINTS BETWEEN INDICATED POINTS THE GRADE SHALL BE ESTABLISHED SO AS TO COMPLY TO A STRAIGHT LINE BEHIND BETWEEN SAID INDICATED POINTS.

ELEVATIONS ARE IN FEET ABOVE U.S.C. & G.S. SEA LEVEL DATUM OF 1929.

THIS DRAWING AND THE DATA HEREON ARE HEREBY MADE A PART OF THE SPECIFICATIONS.

WORK SHALL BE CONSTRUCTED ACCORDING TO SPECIFICATIONS ON FILE IN THE OFFICE OF THE COUNTY ENGINEER AND SHALL BE PROSECUTED ONLY IN THE PRESENCE OF THE COUNTY ENGINEER.

BEFORE WORK CAN BE STARTED, THE CONTRACTOR MUST OBTAIN A PERMIT TO EXCAVATE IN COUNTY STREET FROM THE L. A. COUNTY ROAD DEPT., DIST. NO. 1, AND MAKE A DEPOSIT WITH THE COUNTY ENGINEER, ROOM 241 MAIN AMERICAN BUILDING, 213 SO. BROADWAY SUFFICIENT TO COVER THE COST OF CONSTRUCTION INSPECTION AND RECORD PLANS.

APPROVAL OF THIS PLAN BY THE COUNTY OF LOS ANGELES DOES NOT CONSTITUTE A REPRESENTATION AS TO THE ACCURACY OF THE LOCATION OR OF THE EXISTENCE OR NON-EXISTENCE OF ANY UNDERGROUND UTILITY PIPE, OR STRUCTURE WITHIN THE LIMITS OF THIS PROJECT. THIS NOTE APPLIES TO ALL PAGES.

IF WORK IS TO BE DONE IN A STATE HIGHWAY, A PERMIT MUST BE OBTAINED FROM THE STATE OF CALIFORNIA, DIVISION OF HIGHWAYS, 128 SOUTH SPRING STREET.

COUNTY OF LOS ANGELES, CALIFORNIA

APPROVED, JOHN A. LAMBE, COUNTY ENGINEER

APPROVED, A. M. BAYNE, CHIEF ENGINEER

BY *J. H. Alderman*
SANITATION ENGINEER

BY *A. M. Bayne*
OFFICE ENGINEER

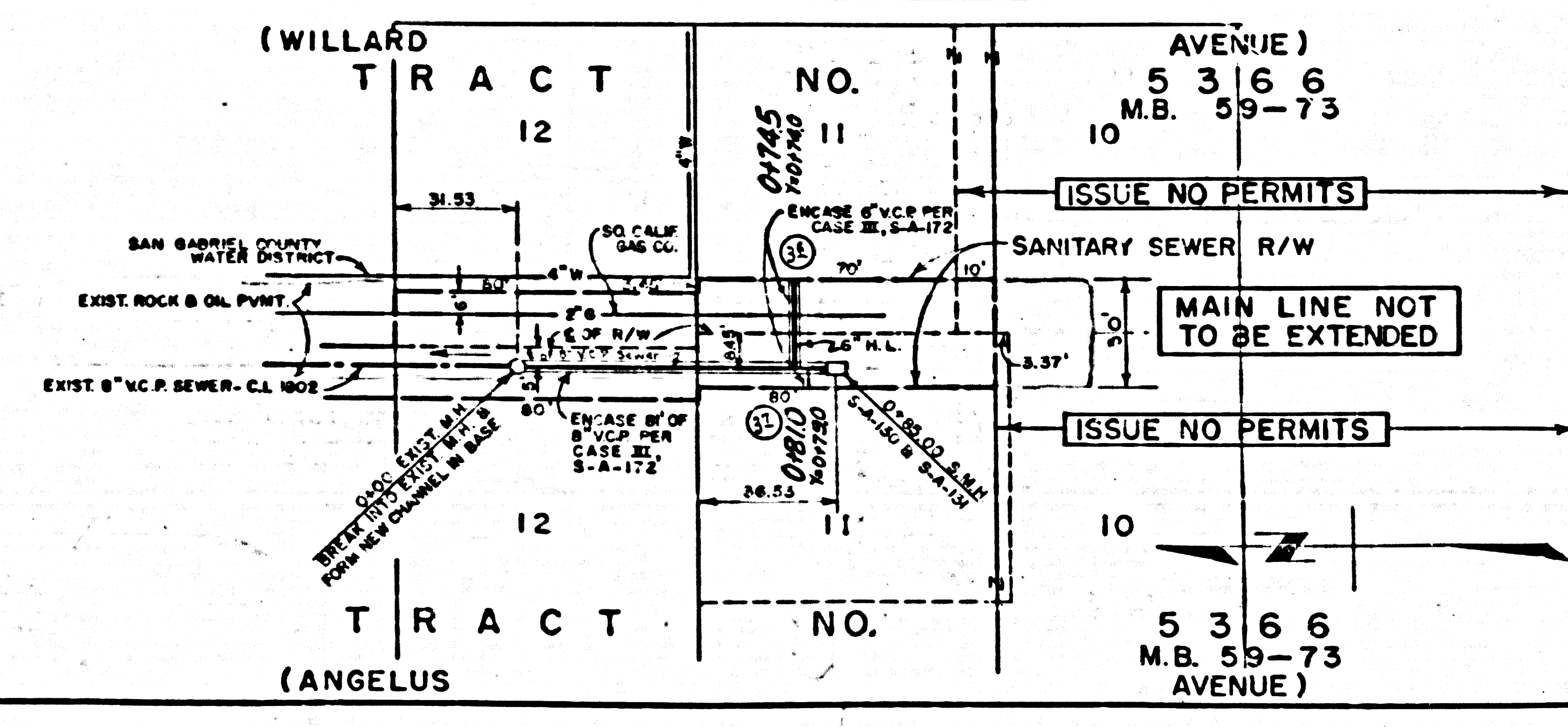
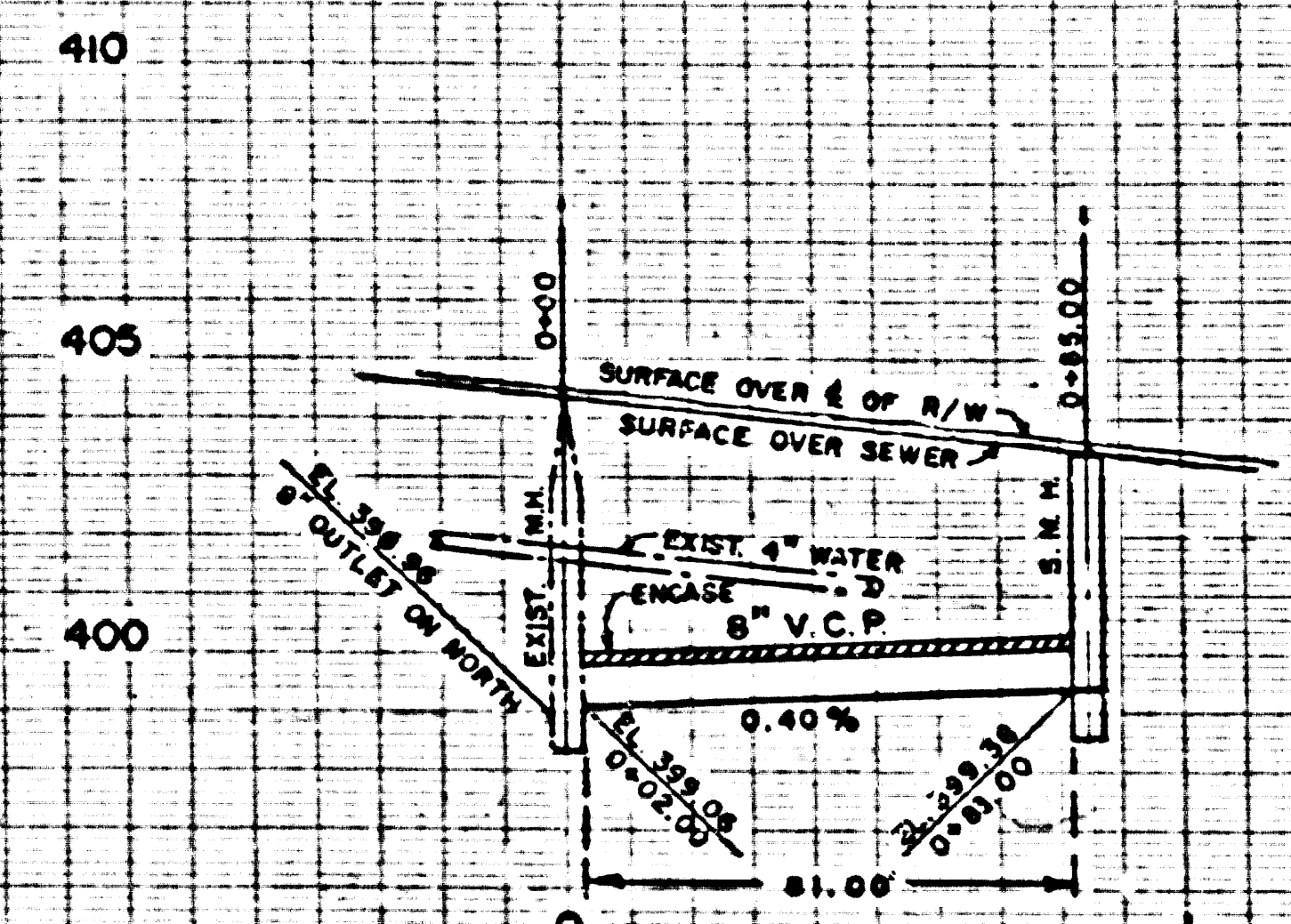
CHECKED BY *W. W. Wain* 5-14-58

OFFICE OF COUNTY ENGINEER, REG. C. E. NO. 2556

P.C. 4761 PAGE 2

NO CHARGE FOR CONNECTIONS

26,031



P.C. 4761

J. H. Alderman