

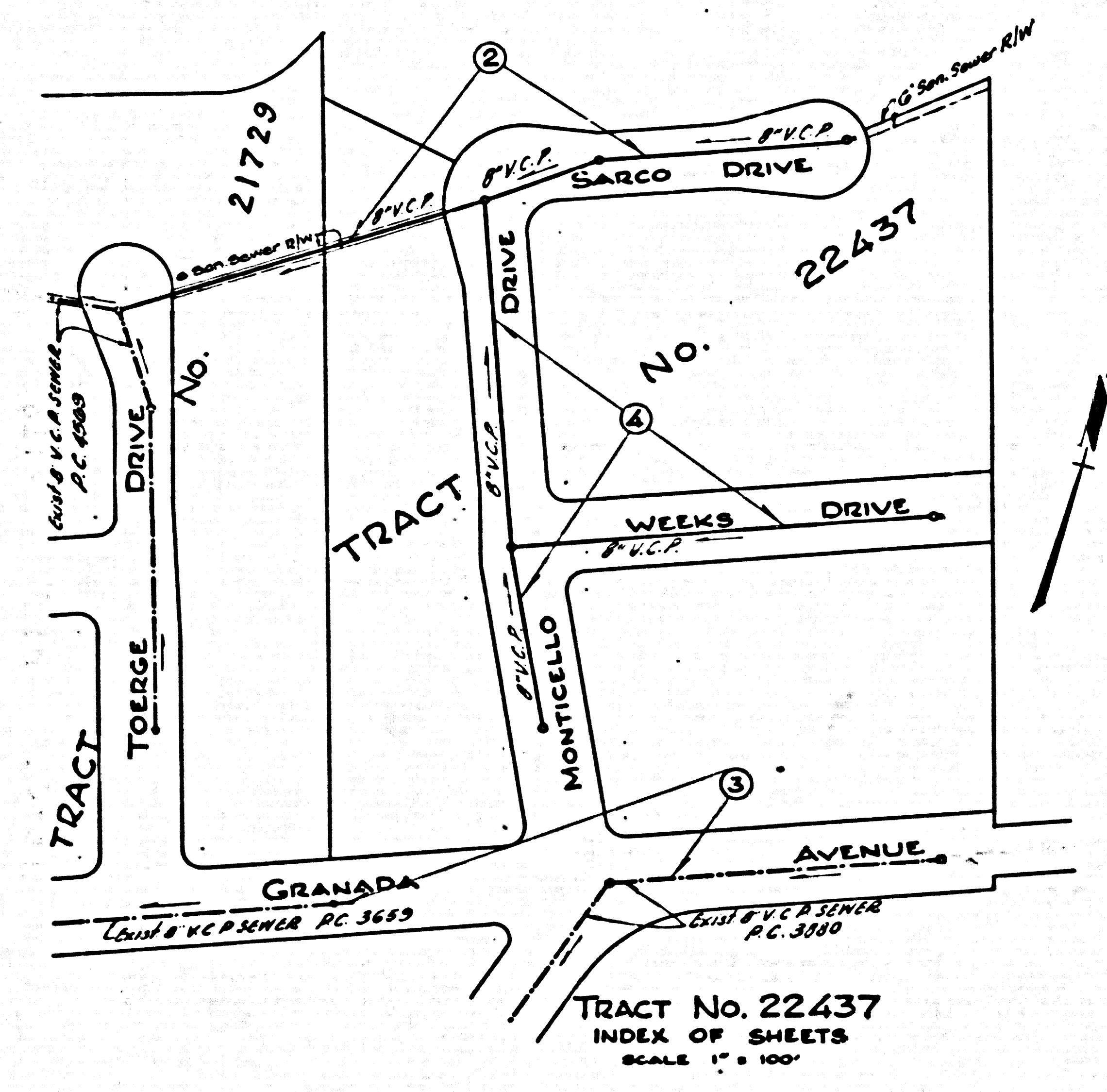
# NORWALK BLDG. DIST. NO. 4.2

PROFILE ALIGNMENT AND GRADE OF **P.C. 4762**  
**SANITARY SEWERS** PAGE 1  
 TO BE CONSTRUCTED IN

**TRACT No. 22437**  
**PRIVATE CONTRACT NO. 4762**

W.S. 34  
 2 SHEETS, 4 PAGES  
 SCALE: 1" = 4' HORIZ. 1" = 4' VERT.  
 APR. 1958  
 PREPARED IN THE OFFICES OF  
**KEMMERER ENGINEERING CO., INC.**  
 By: *John C. Sherman*  
 REG. C. E. NO. 8244  
 FOR LEGEND SEE PLAN NO. S-A-64

26,206



- NOTES**
- PROVIDE STAKES ON 7-1/2' PROPERTY LINE OR PROPERTY LINES PRODUCED AT RIGHT ANGLES TO THE SEWER LINE AT THE CENTER LINE OF EACH MANHOLE.
  - NO REPRESENTATIVE OF THE COUNTY ENGINEER WILL SURVEY OR LAYOUT ANY PORTION OF THE WORK.
  - THE OWNER OR HIS AUTHORIZED REPRESENTATIVE SHALL FURNISH THE COUNTY ENGINEER WITH GRADE SHEETS AND STATION FOR ALL HOUSE LATERALS AND BRANCHES AND SHALL PROVIDE STAKES FOR THEM AT THEIR PROPER LOCATIONS WITH STATIONING PLAINLY MARKED. ANY CHANGE IN LOCATION SHALL BE REQUESTED BY WRITING BY THE OWNER OR HIS REPRESENTATIVE. NO REVISIONS SHALL BE MADE IN THESE PLANS WITHOUT THE APPROVAL OF THE COUNTY ENGINEER.
  - USE STANDARD MANHOLE FRAMES AND COVERS, S.A.-117, EXCEPT AS NOTED.
  - USE STANDARD STRENGTH PIPE EXCEPT AS NOTED.
  - USE CEMENT MORTAR OR "THERMO-LACK" OR "SPO-60" SEAL FOR ALL VITRIFIED CLAY PIPE JOINTS.
  - RESURFACE ALL TRENCH WITHIN PAVED AREA TO MEET L. A. COUNTY ROAD DEPT., OR CALIF. STATE HIGHWAY DEPT. REQUIREMENTS IN ACCORDANCE WITH PERMITS.
  - ENCASE FOUR FEET OF SEWER AT POINTS OF INTERFERENCE WITH POLES, S.A.-119.
  - HOUSE LATERALS TO BE CONSTRUCTED WITH INVERTS AT PROPERTY LINE 6 FEET BELOW CURB GRADE EXCEPT AS NOTED.
  - ALL STRUCTURES SHALL BE BRICK SEWER STRUCTURES, S.A.-184, EXCEPT AS NOTED.
  - FOR ALLOWABLE LEAKAGE TEST USE FORMULA NO. 1, SPEC'S., SEC. 31.
  - MANHOLE TOPS IN UNIMPROVED RIGHTS OF WAY TO BE 6" ABOVE FINISHED GRADE.
  - THE PRIVATE ENGINEER IS TO FURNISH THE HOUSE LATERAL DEPTH AT THE PROPERTY LINE BELOW THE TOP OF CURB ELEVATION FOR EACH HOUSE LATERAL ON THE GRADE SHEET.

8 M. S.V. 1136 Lead & Nail in conc. Headwall 25' So. of Imperial Highway & 200' E. of Los Flores Ave. Elev. 172.671

THE CONTRACTOR SHALL NOTIFY THE CONSTRUCTION & STORM DRAIN DIVISION BY TELEPHONE MADISON 9-4747 EXT. 362 AT LEAST 24 HRS. BEFORE STARTING ANY WORK UNDER THIS CONTRACT.

**NO CHARGE FOR CONNECTIONS**  
 7-77C Standard 6-6-58

**NOTE**

GRADES TO WHICH THIS IMPROVEMENT IS TO BE CONSTRUCTED ARE SHOWN ON PLANS AND PROFILES. GRADE POINTS FOR TOP OF CURB, CENTER LINE OF STREET, OR CENTER LINE OF ALLEYS ARE SHOWN BY CIRCLES ON PROFILES AT ALL POINTS BETWEEN DESIGNATED POINTS. THE GRADE SHALL BE ESTABLISHED SO AS TO CONFORM TO A STRAIGHT LINE DRAWN BETWEEN SAID DESIGNATED POINTS.

ELEVATIONS ARE IN FEET ABOVE U.S.C. & G.S. SEA LEVEL, DATUM OF 1929.

THIS DRAWING AND THE DATA HEREON ARE HEREBY MADE A PART OF THE SPECIFICATIONS. BEFORE WORK CAN BE STARTED THE CONTRACTOR MUST OBTAIN A PERMIT TO EXCAVATE IN COUNTY STREETS AND SHALL BE PROSECUTED ONLY IN THE PRESENCE OF THE COUNTY ENGINEER.

APPROVAL OF THIS PLAN BY THE COUNTY OF LOS ANGELES DOES NOT CONSTITUTE A REPRESENTATION AS TO THE ACCURACY OF THE LOCATION OF OR THE EXISTENCE OR NON-EXISTENCE OF ANY UNDERGROUND UTILITY PIPE, OR STRUCTURE WITHIN THE LIMITS OF THIS PROJECT. THIS NOTE APPLIES TO ALL PAGES.

IF WORK IS TO BE DONE IN A STATE HIGHWAY, A PERMIT MUST BE OBTAINED FROM THE STATE OF CALIFORNIA, DIVISION OF HIGHWAYS, 128 SOUTH BRIND STREET.

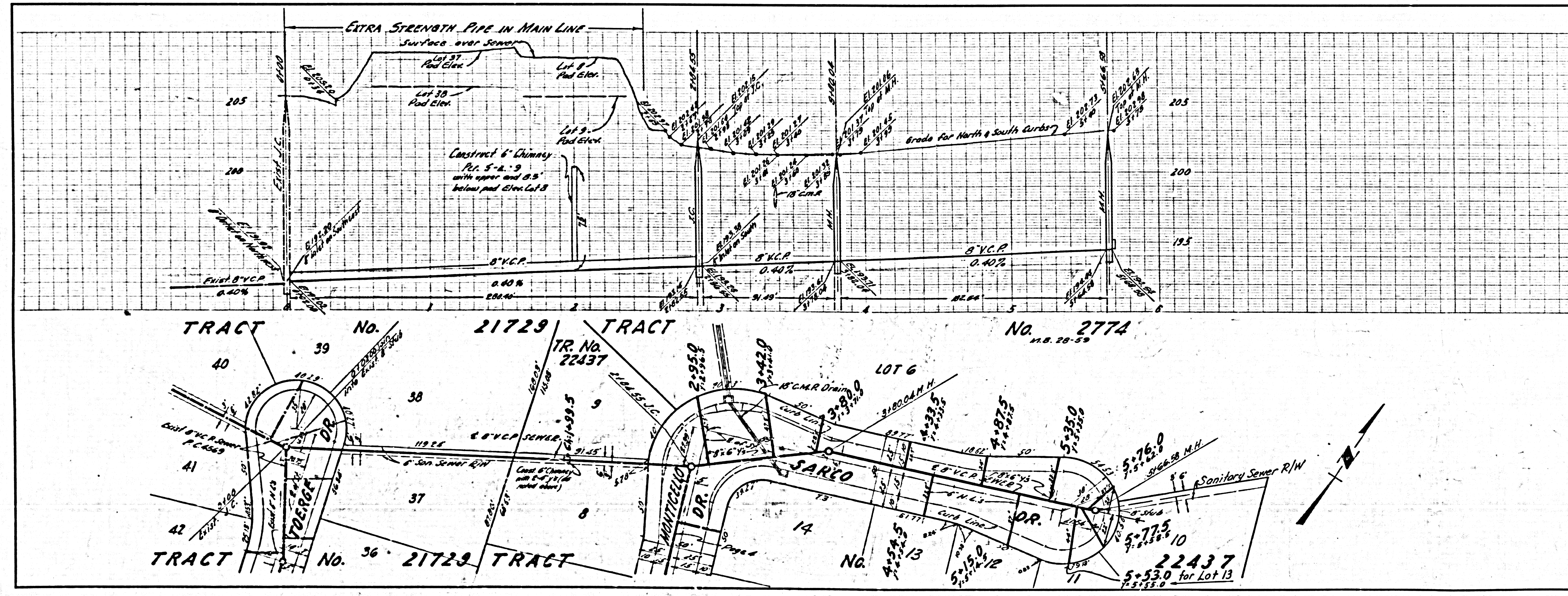
COUNTY OF LOS ANGELES, CALIFORNIA

APPROVED, JOHN A. LAMBIE, COUNTY ENGINEER  
 APPROVED, A. M. BAWN, CHIEF ENGINEER

BY: *John C. Sherman* (Sanitation Engineer)  
 BY: *A. M. Bawn* (Office Engineer)

CHECKED BY: *John C. Sherman*  
 OFFICE OF COUNTY ENGINEER, REG. C. E. NO. 8244

7-77C 6-6-58



P.C. 4762 PAGE 2

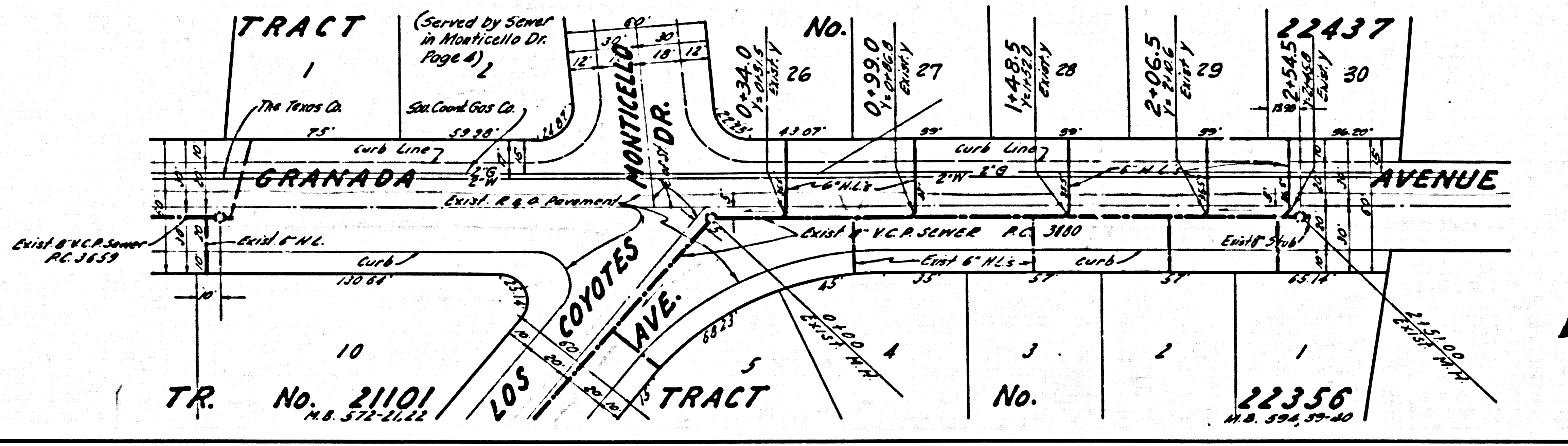
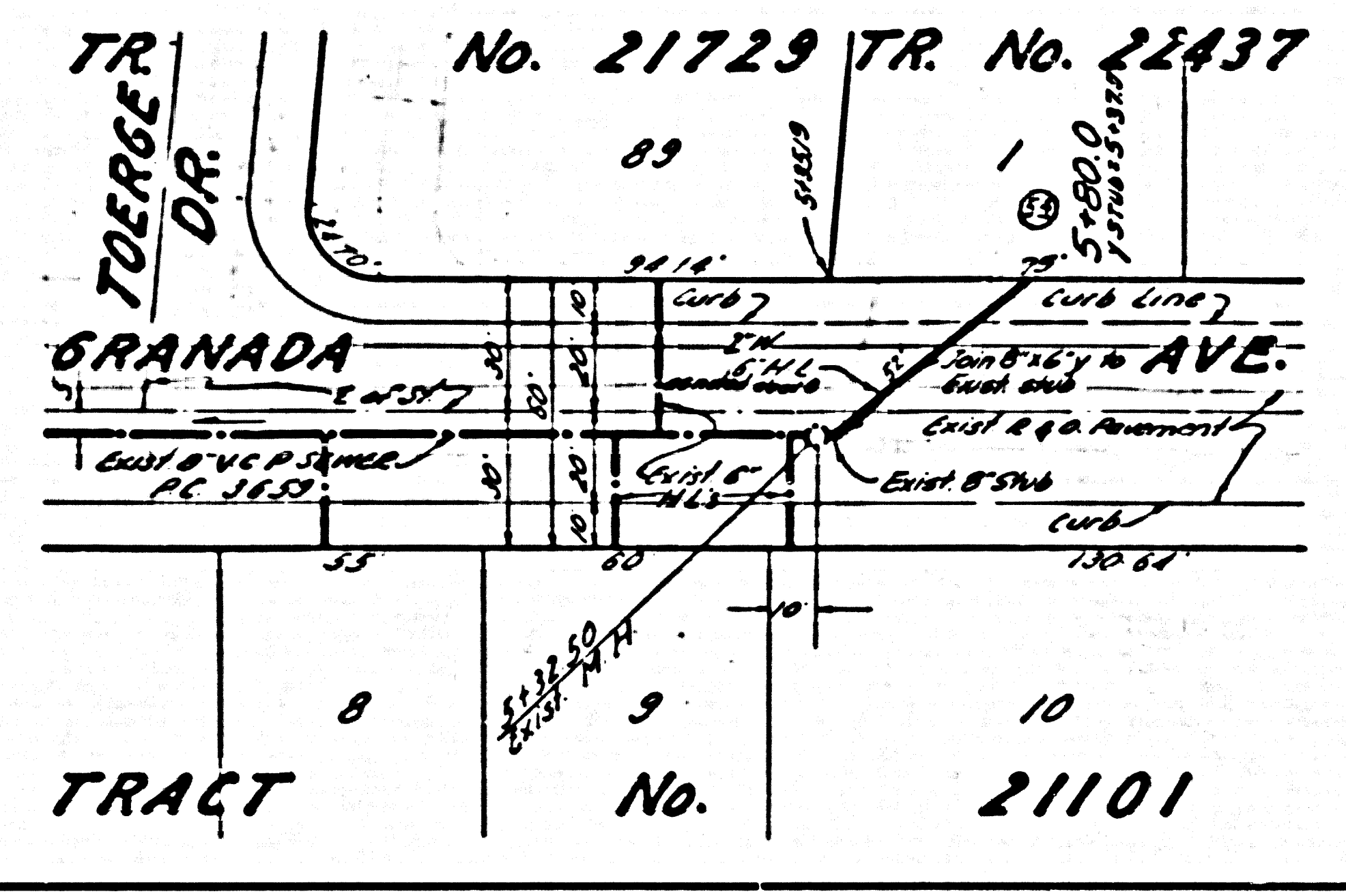
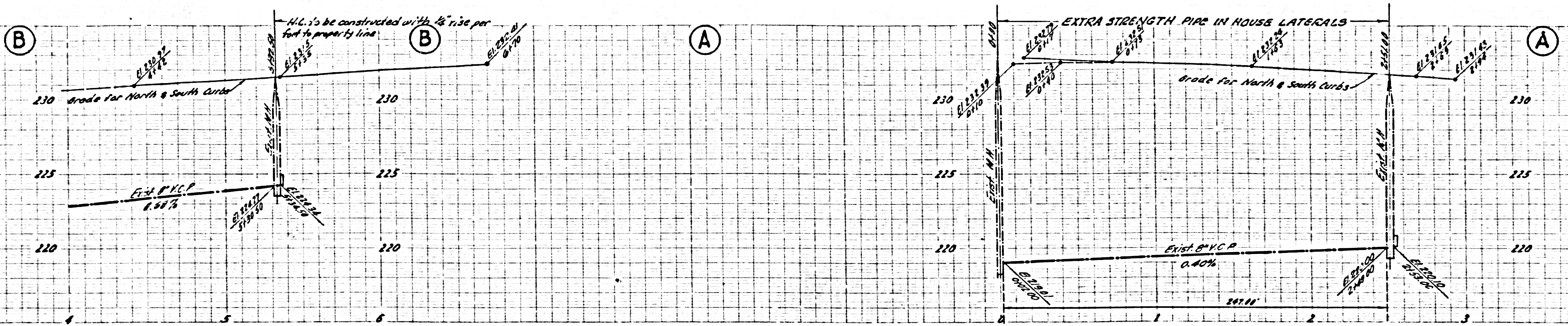
**NO CHARGE FOR CONNECTIONS**

26,207

7-77C 6-6-58

NO CHARGE FOR CONNECTIONS

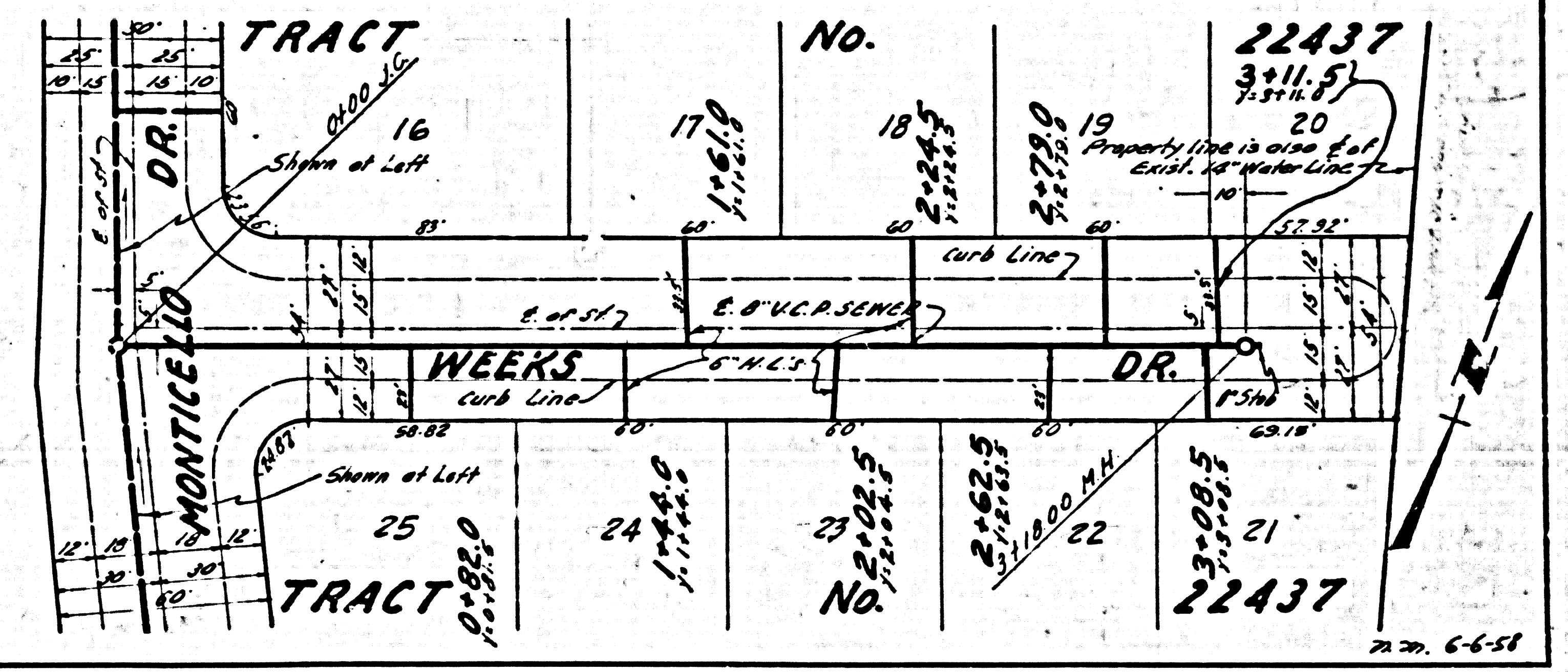
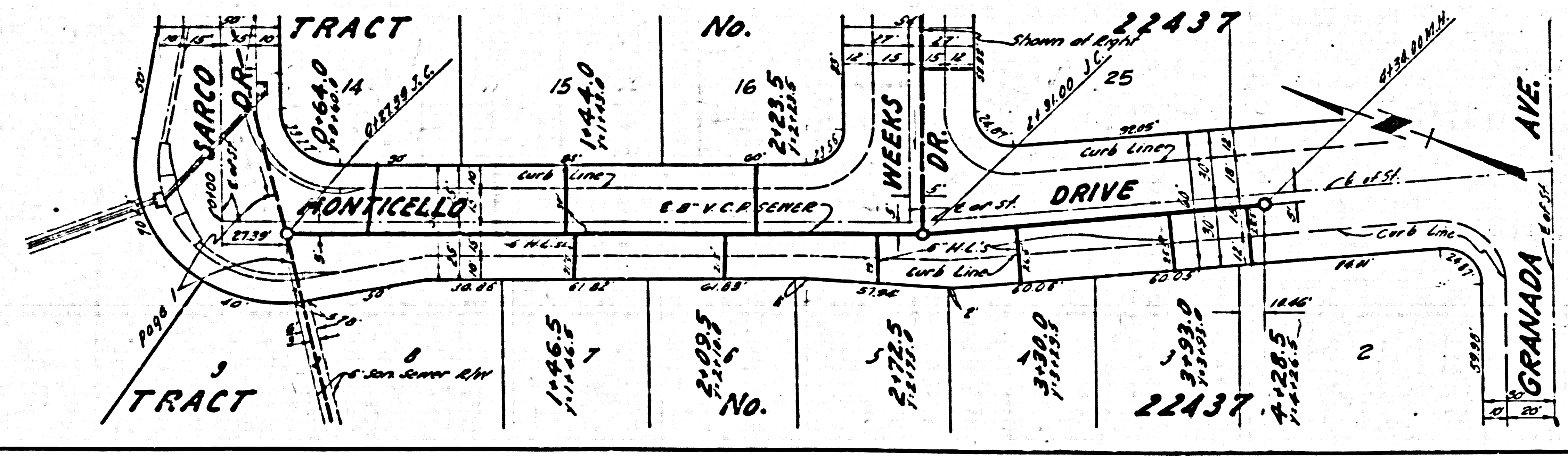
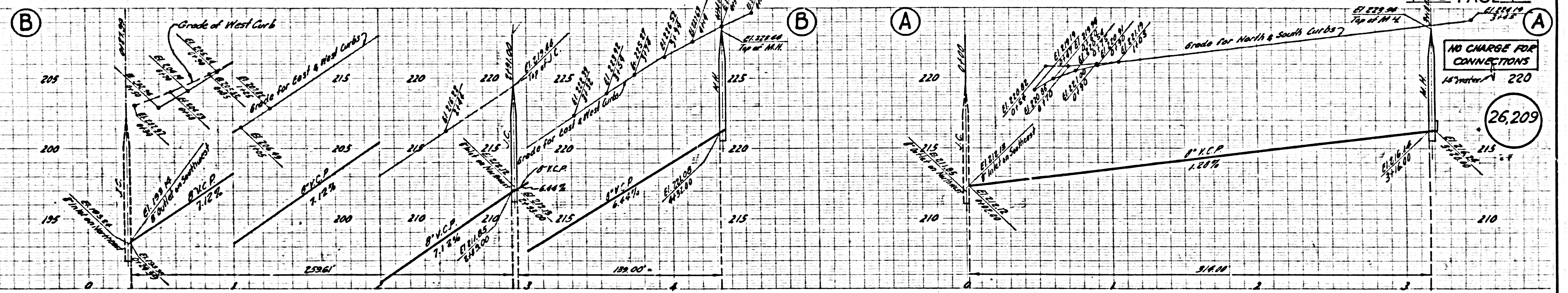
26,208



27. 6-4-58

NO CHARGE FOR CONNECTIONS

26,209



27. 6-4-58

SCALES 1/8"