

BELLFLOWER BLDG. DIST. NO. 4

PROFILE ALIGNMENT AND GRADE OF **P.C. 4766**
SANITARY SEWERS PAGE **1**
 TO BE CONSTRUCTED IN

176 TH STREET

PRIVATE CONTRACT NO. 4766

W.S. 33

1 SHEET OF 2 PAGES

26,404

SCALE: VERT. 1" = 4' HORIZ. 1" = 40'

APRIL, 1958

PREPARED BY THE OFFICES OF

MANNING ENGINEERING CO.

By J. J. Manning REG. E. E. NO. 76276

FOR LEGEND SEE PLAN NO. S-A-64

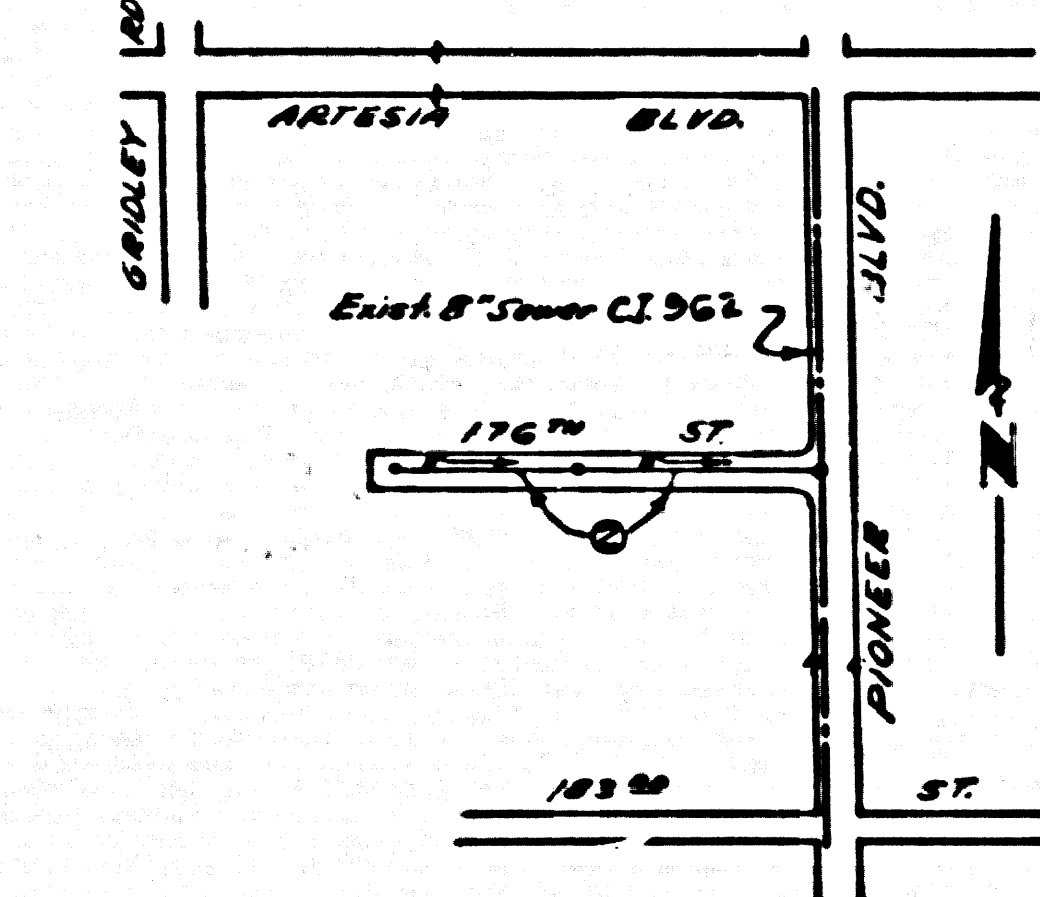
BENCH MARK SY 3420 Elev. 55.772
 L. 17' in N.W. Cor. Walk to House #17528
 Pioneer Blvd. 60' S of 176th Street
 176' S & W of Pioneer Blvd. (Arrowshead)

NOTE:
 ISSUE NO PERMITS FOR
 CONNECTION TO THIS SEWER
 UNTIL 176 TH STREET HAS BEEN
 DEDICATED & ACCEPTED BY LOS ANGELES COUNTY

NO CHARGE
 FOR CONNECTIONS
 E. J. J. 9-25-58

NOTE:
 THE CONTRACTOR SHALL NOTIFY THE CONSTRUCTION AND
 STORM DRAIN DIVISION BY TELEPHONE, MADISON 9-4747,
 EX. 362, AT LEAST 24 HOURS BEFORE STARTING ANY
 WORK UNDER THIS CONTRACT.

- NOTES:**
- PROVIDE STAKES ON THE PROPERTY LINE OR PROPERTY LINES PRODUCED AT RIGHT ANGLES TO THE SEWER LINE AT THE CENTER LINE OF EACH MANHOLE.
 - NO REPRESENTATIVE OF THE COUNTY ENGINEER WILL REVIEW OR LAYOUT ANY PORTION OF THE WORK.
 - THE OWNER OR HIS AUTHORIZED REPRESENTATIVE SHALL FURNISH THE COUNTY ENGINEER WITH GRADE SHEETS AND STATION FOR ALL HOUSE LATERALS AND Y BRANCHES AND SHALL PROVIDE STAKES FOR THEM AT THEIR PROPER LOCATIONS WITH STATIONS PLAINLY MARKED. ANY CHANGE IN LOCATION SHALL BE REQUESTED IN WRITING BY THE OWNER OR HIS REPRESENTATIVE.
 - NO REVISIONS SHALL BE MADE IN THESE PLANS WITHOUT THE APPROVAL OF THE COUNTY ENGINEER.
 - USE STANDARD MANHOLE FRAMES AND COVERS, S-A-117, 20" DIA. - 48" DEPTH.
 - USE STANDARD STRENGTH PIPE 8" DIA. - 48" DEPTH.
 - USE CHAIN HOOKS, METAL JOINTS, OR SPEED-SEAL, FOR ALL RCP JOINTS PER SPEC. S.E. 10-10-58.
 - RESURFACE ALL TRENCH WITHIN PAVED AREA TO MEET L. A. COUNTY ROAD DEPT. OR CALIF. STATE HIGHWAY DEPT. SPECIFICATIONS IN ACCORDANCE WITH PERMITS.
 - ENCASE FOUR FEET OF SEWER AT POINTS OF INTERFERENCE WITH POLES, S.A. 176-COR-58.
 - HOUSE LATERALS TO BE CONSTRUCTED WITH 1/2" RISE PER FOOT TO PROPERTY LINE.
 - ALL STRUCTURES SHALL BE BRICK SEWER STRUCTURES, S-A-104, 20" DIA. - 48" DEPTH.
 - FOR ALLOWABLE LEAKAGE TEST USE FORMULA NO. 1 SPEC'S, SEC. B.
 - MANHOLE TOPS IN UNIMPROVED RIGHTS-OF-WAY TO BE 6" ABOVE FINISHED GRADE.
 - THE PRIVATE ENGINEER SHALL FURNISH THE HOUSE LATERAL DEPTH AT THE PROPERTY LINE BELOW THE TOP OF CURB ELEVATION FOR EACH HOUSE LATERAL ON THE GRADE SHEET.



KEY MAP
 P.C. 4766
 SCALE: 1" = 400'

NOTE:
 GRADES TO WHICH THIS IMPROVEMENT IS TO BE CONSTRUCTED ARE SHOWN ON PLANS AND PROFILES. GRADE POINTS FOR TOP OF CURBS, CENTER LINE OF STREETS, OR CENTER LINE OF ALLEYS ARE SHOWN BY CIRCLES ON PROFILES. AT ALL POINTS BETWEEN DESIGNATED POINTS THE GRADE SHALL BE ESTABLISHED SO AS TO CONFORM TO A STRAIGHT LINE DRAWN BETWEEN SAID DESIGNATED POINTS.
 ELEVATIONS ARE IN FEET ABOVE U.S.C. & G.S. MEAN SEA LEVEL, DATUM OF 1929.
 THIS DRAWING AND THE DATA HEREON ARE HEREBY MADE A PART OF THE SPECIFICATIONS.
 WORK SHALL BE CONSTRUCTED ACCORDING TO SPECIFICATIONS ON FILE IN THE OFFICE OF THE COUNTY ENGINEER AND SHALL BE PROTECTED ONLY IN THE PRESENCE OF THE COUNTY ENGINEER.
 BEFORE WORK CAN BE STARTED, THE CONTRACTOR MUST OBTAIN A PERMIT TO EXCAVATE IN COUNTY STREETS FROM THE L. A. COUNTY ROAD DEPT. EXC. PER. #... AND MAKE A DEPOSIT WITH THE COUNTY ENGINEER, ROOM 324 PAN AMERICAN BUILDING, 225 SO. BROADWAY SUFFICIENT TO COVER THE COST OF CONSTRUCTION INSPECTION AND RECORD PLANS.
 APPROVAL OF THIS PLAN BY THE COUNTY OF LOS ANGELES DOES NOT CONSTITUTE A REPRESENTATION AS TO THE ACCURACY OF THE LOCATION OF OR THE EXISTENCE OR NON-EXISTENCE OF ANY UNDERGROUND UTILITY PIPE, OR STRUCTURE WITHIN THE LIMITS OF THIS PROJECT. THIS NOTE APPLIES TO ALL PAGES.
 IF WORK IS TO BE DONE IN A STATE HIGHWAY, A PERMIT MUST BE OBTAINED FROM THE STATE OF CALIFORNIA, DIVISION OF HIGHWAYS, 138 SOUTH SPRING STREET.

COUNTY OF LOS ANGELES, CALIFORNIA

APPROVED, JOHN A. LAMBE, COUNTY ENGINEER

APPROVED, A. M. RAWN, CHIEF ENGINEER

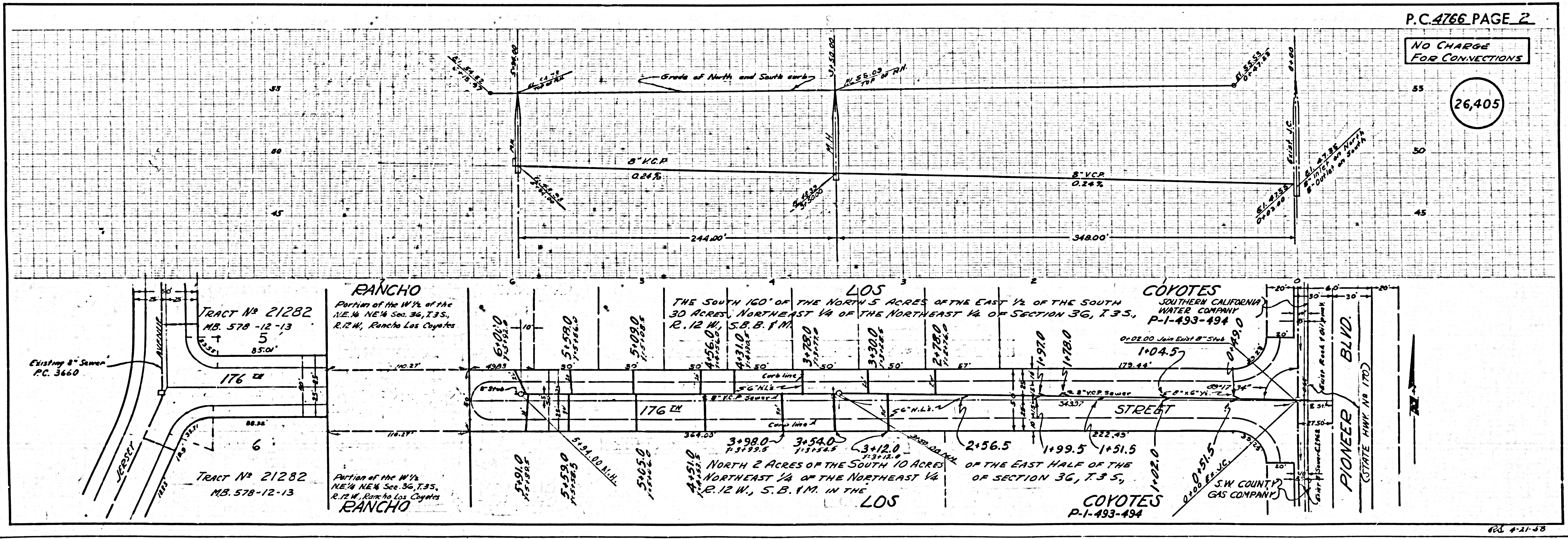
BY J. J. Manning REG. E. E. NO. 76276

BY A. M. Rawn REG. E. E. NO. 76276

CHECKED BY J. J. Manning 10-10-58

OFFICE OF COUNTY ENGINEER, REG. C. E. NO. 3434

SUBMITTED BY J. J. Manning 9-25-58
 LOS ANGELES REGIONAL ENGINEER, R.C.E. NO. 3871



P.C. 4766 PAGE 2

NO CHARGE
 FOR CONNECTIONS

26,405

9-25-58