

SAN DIMAS BLDG. DIST. NO. 10

PROFILE ALIGNMENT AND GRADE OF P.C. 4777  
 SANITARY SEWERS PAGE 1  
 TO BE CONSTRUCTED IN

TRACT NO. 24403 (26,659)

PRIVATE CONTRACT NO. 4777

W.S. 47

2 SHEETS; 3 PAGES

SCALE: VERT. 1" = 4' HORIZ. 1" = 20' MAY, 1958

PREPARED IN THE OFFICES OF

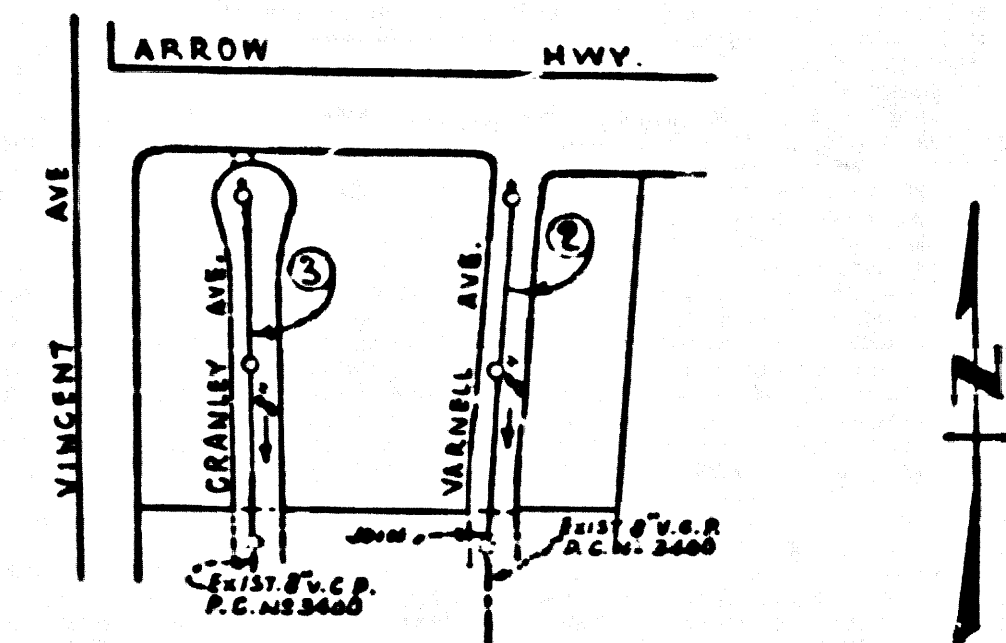
BARCLAY ENGINEERING CO., INC.

By *Edward J. Pearson* REG. C. E. NO. 8783

FOR LEGEND SEE PLAN NO. S-A-64

BENCH MARK  
 S.G. 230  
 Lead 2 Tack 2' N. of E.C.R.  
 @ N.E. Corner Arrow Hwy. &  
 Clydbank Elev. 477.68

NO CHARGE FOR CONNECTIONS  
*J.M. Cahill*



INDEX MAP  
 SCALE 1" = 300'  
 TRACT NO. 24403  
 P.C. 4777

- NOTES
- PROVIDE STAKES ON THE PROPERTY LINE OR PROPERTY LINES PRODUCED AT RIGHT ANGLES TO THE SEWER LINE AT THE CENTER LINE OF EACH MANHOLE.
  - NO REPRESENTATIVE OF THE COUNTY ENGINEER WILL SURVEY OR LAYOUT ANY PORTION OF THE WORK.
  - THE OWNER OR HIS AUTHORIZED REPRESENTATIVE SHALL FURNISH THE COUNTY ENGINEER WITH GRADE SHEETS AND STATION FOR ALL HOUSE LATERALS AND Y BRANCHES AND SHALL PROVIDE STAKES FOR THEM AT THEIR PROPER LOCATIONS WITH STATIONING PLAINLY MARKED. ANY CHANGE IN LOCATION SHALL BE REQUESTED IN WRITING BY THE OWNER OR HIS REPRESENTATIVE.
  - NO REVISIONS SHALL BE MADE IN THESE PLANS WITHOUT THE APPROVAL OF THE COUNTY ENGINEER.
  - USE STANDARD MANHOLE FRAMES AND COVERS, S.A-117, 24" DIA. 48" DEPTH.
  - USE STANDARD STRENGTH PIPE 8" DIA. 48" DEPTH.
  - USE CEMENT MORTAR OR WEDGE LOCK JOINTS OR SPEED SEAL FOR ALL VITRIFIED CLAY PIPE JOINTS PER SPECS SEC. 36 (4) B.
  - RESURFACE ALL TRENCH WITHIN PAVED AREA TO MEET L.A. COUNTY ROAD DEPT. OR CALIF. STATE HIGHWAY DEPT. REQUIREMENTS IN ACCORDANCE WITH PERMITS.
  - ENCASE FOUR FEET OF SEWER AT POINTS OF INTERFERENCE WITH POLES, S.A-172 CASE III.
  - HOUSE LATERALS TO BE CONSTRUCTED WITH INVERTS AT PROPERTY LINE 6 FEET BELOW CURB GRADE 8" DIA. 48" DEPTH.
  - ALL STRUCTURES SHALL BE BRICK SEWER STRUCTURES, S.A-104, 8" DIA. 48" DEPTH.
  - FOR ALLOWABLE LEAKAGE TEST USE FORMULA NO. 1 SPECS, SEC. 5-4.
  - MANHOLE TOPS TO BE UNIMPROVED RIGHTS-OF-WAY TO BE 2" ABOVE FINISHED GRADE.
  - ALL THE LOCATIONS SHOWN FOR EXISTING SUBSTRUCTURES HAVE BEEN TAKEN FROM RECORDS AND THEIR CORRECTNESS AND COMPLETENESS IS IN NO WAY GUARANTEED, IT SHALL BE THE CONTRACTOR'S RESPONSIBILITY ALONE TO DEFINITELY LOCATE ALL UNDERGROUND LINES OF EVERY NATURE WHETHER SHOWN HEREON OR NOT, AND PROTECT THEM FROM DAMAGE, THE CONTRACTOR SHALL BEAR THE TOTAL EXPENSE OF REPAIR TO ANY LINE DAMAGED BY ANY OPERATION IN CONNECTION WITH THE PROSECUTION OF THIS WORK.
  - THE PRIVATE ENGINEER IS TO FURNISH THE HOUSE LATERAL DEPTH AT THE PROPERTY LINE BELOW THE TOP OF CURB ELEVATION FOR EACH HOUSE LATERAL, ON THE GRADE SHEET.

NOTE: THE CONTRACTOR SHALL NOTIFY THE CONSTRUCTION AND STORM DRAIN DIVISION BY TELEPHONE, MADISON B-4747, EXT. 362 AT LEAST 24 HOURS BEFORE STARTING ANY WORK UNDER THIS CONTRACT.

NOTE: GRADES TO WHICH THIS IMPROVEMENT IS TO BE CONSTRUCTED ARE SHOWN ON PLANS AND PROFILE GRADE POINTS FOR TOP OF CURBS, CENTER LINE OF STREET, OR CENTER LINE OF ALLEYS ARE SHOWN BY CIRCLES ON PROFILES. AT ALL POINTS BETWEEN DESIGNATED POINTS THE GRADE SHALL BE ESTABLISHED SO AS TO CONFORM TO A STRAIGHT LINE DRAWN BETWEEN SAID DESIGNATED POINTS.

ELEVATIONS ARE IN FEET ABOVE U.S.C. & G.S. SEA LEVEL DATUM OF 1988.

THIS DRAWING AND THE DATA HEREON ARE HEREBY MADE A PART OF THE SPECIFICATIONS.

WORK SHALL BE CONSTRUCTED ACCORDING TO SPECIFICATIONS ON FILE IN THE OFFICE OF THE COUNTY ENGINEER AND SHALL BE PROSECUTED ONLY IN THE PRESENCE OF THE COUNTY ENGINEER.

BEFORE WORK CAN BE STARTED, THE CONTRACTOR MUST OBTAIN A PERMIT TO EXCAVATE IN COUNTY STREETS FROM THE L.A. COUNTY ROAD DEPT. (DIST. 119) AND MAKE A DEPOSIT WITH THE COUNTY ENGINEER, ROOM 124 SAN GABRIEL VALLEY WATER CO. BLDG. 233 SO. BROADWAY SUFFICIENT TO COVER THE COST OF CONSTRUCTION INSPECTION AND RECORD PLANS.

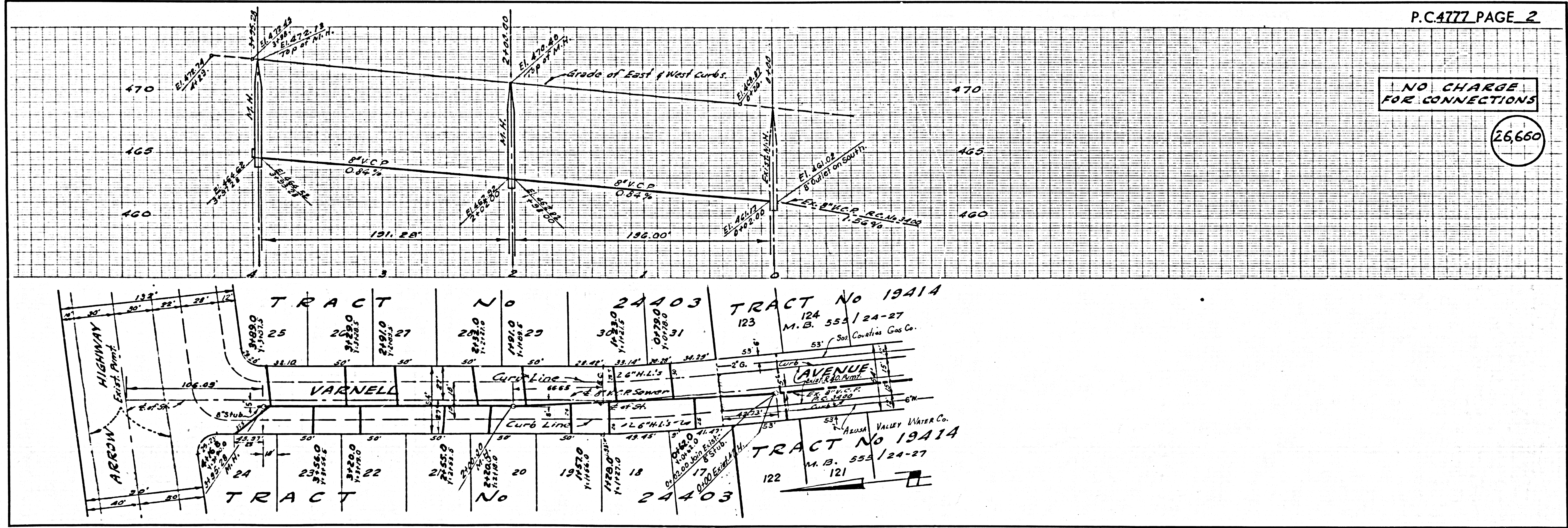
APPROVAL OF THIS PLAN BY THE COUNTY OF LOS ANGELES DOES NOT CONSTITUTE A REPRESENTATION AS TO THE ACCURACY OF THE LOCATION OF OR THE EXISTENCE OR NON-EXISTENCE OF ANY UNDERGROUND UTILITY PIPE, OR STRUCTURE WITHIN THE LIMITS OF THIS PROJECT. THIS NOTE APPLIES TO ALL PAGES.

IF WORK IS TO BE DONE IN A STATE HIGHWAY, A PERMIT MUST BE OBTAINED FROM THE STATE OF CALIFORNIA, DIVISION OF HIGHWAYS, 120 SOUTH SPRING STREET.

COUNTY OF LOS ANGELES, CALIFORNIA

APPROVED, JOHN A. LAMBIE, COUNTY ENGINEER  
 APPROVED, A. M. RAWN, CHIEF ENGINEER  
 CO. SAN. DIST. NO. 22  
 BY *E. H. Hughes* SANITATION ENGINEER BY *A. M. Rawn* OFFICE ENGINEER  
 CHECKED BY *R. K. Onda* OFFICE OF COUNTY ENGINEER, REG. C. E. NO. 5456

SUBMITTED *K. F. Bravender* SAN GABRIEL VALLEY REGIONAL ENGINEER.



NO CHARGE FOR CONNECTIONS

(26,660)

P.C. 4777 PAGE 2

26,661

NO CHARGE FOR CONNECTIONS

