

NORWALK BLDG. DIST. NO. 4.2

PROFILE ALIGNMENT AND GRADE OF P.C. 4779  
 SANITARY SEWERS PAGE 1

TO BE CONSTRUCTED IN  
 TRACT N<sup>o</sup> 23755 AND 24503 26225

PRIVATE CONTRACT NO. 4779

W.S. 34  
 5 SHEETS, 10 PAGES

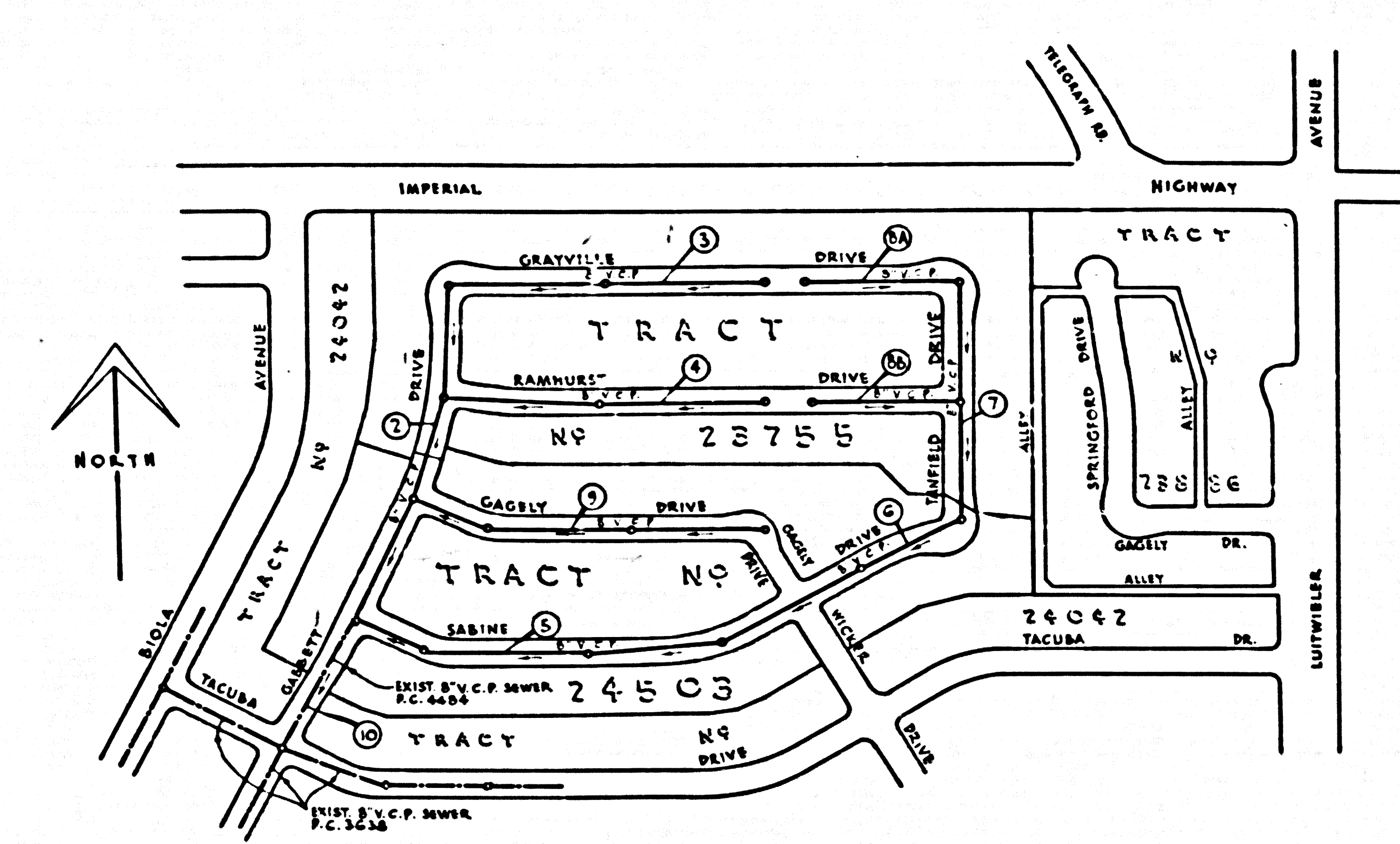
SCALE: HORIZ. 1" = 40'  
 VERT. 1" = 4'  
 MAY, 1958

PREPARED IN THE OFFICES OF  
 LEONARD H. GOWDY

By Leonard H. Gowdy  
 REG. C.E. NO. 4823

FOR LEGEND SEE PLAN NO. S-A-64

- NOTES
1. PROFILE STAKES ON THE PROPERTY LINE OR PROPERTY LINES PRODUCED AT RIGHT ANGLES TO THE SEWER LINE AT THE CENTER LINE OF EACH MANHOLE.
  2. NO REPRESENTATIVE OF THE COUNTY ENGINEER WILL SURVEY OR LAYOUT ANY PORTION OF THE WORK.
  3. THE OWNER OR HIS AUTHORIZED REPRESENTATIVE SHALL FURNISH THE COUNTY ENGINEER WITH GRADE SHEETS AND STATION FOR ALL HOUSE LATERALS AND Y BRANCHES AND SHALL PROVIDE STAKES FOR THEM AT THEIR PROPER LOCATIONS WITH STATIONING PLAINLY MARKED. ANY CHANGE IN LOCATION SHALL BE REQUESTED IN WRITING BY THE OWNER OR HIS REPRESENTATIVE.
  4. NO REVISIONS SHALL BE MADE IN THESE PLANS WITHOUT THE APPROVAL OF THE COUNTY ENGINEER.
  5. USE STANDARD MANHOLE FRAMES AND COVERS, S-A-117.
  6. USE STANDARD STRENGTH PIPE EXCEPT AS NOTED.
  7. USE CEMENT MORTAR "WEDGE LOCK" OR "PRESS SEAL" FOR VITRIFIED CLAY PIPE JOINTS PER S.P.C.E. SEC. 34 & 66.
  8. RESURFACE ALL TRENCH WITHIN PAVED AREA TO MEET L.A. COUNTY ROAD DEPT., OR CALIF. STATE HIGHWAY DEPT. REQUIREMENTS IN ACCORDANCE WITH PERMITS.
  9. ENCASE FOUR FEET OF SEWER AT POINTS OF INTERFERENCE WITH POLES, S-A-172, CASE 35.
  10. HOUSE LATERALS TO BE CONSTRUCTED WITH INVERTS AT PROPERTY LINE 8 FEET BELOW CURB GRADE EXCEPT AS NOTED.
  11. ALL STRUCTURES SHALL BE BRICK SEWER STRUCTURES, S-A-104.
  12. FOR ALLOWABLE LEAKAGE TEST USE FORMULA NO. 1 SPEC. 3, SEC. 34.
  13. MANHOLE TOPS IN UNIMPROVED RIGHTS-OF-WAY TO BE 6" ABOVE FINISHED GRADE.
  14. THE PRIVATE ENGINEER IS TO FURNISH THE HOUSE LATERAL DEPTH AT THE PROPERTY LINE BELOW THE TOP OF CURB ELEVATION FOR EACH HOUSE LATERAL, ON THE GRADE SHEET.
  15. THE CONTRACTOR SHALL NOTIFY THE CONSTRUCTION AND STORM DRAIN DIVISION BY TELEPHONE - RADIATION 5-6767 EXT. 362 AT LEAST 24 HOURS BEFORE STARTING ANY WORK UNDER THIS CONTRACT.



INDEX MAP  
 SCALE: 1" = 300'  
 P.C. NO. 4779  
 TRACT N<sup>o</sup> 23755 & 24503

D. M. SY 4047 - ELEVATION 171.836 - L.A. CO. RD. DEPT. MONUMENT IN MACADAM PAVT. 6' EAST OF LUITWILER, AVE. 18' WEST OF TEL. POLE # W5651Y 1236' SOUTH OF 4 IMPERIAL HIGHWAY IN CASING WITH COVER. LA MIRADA QUAD - 1955

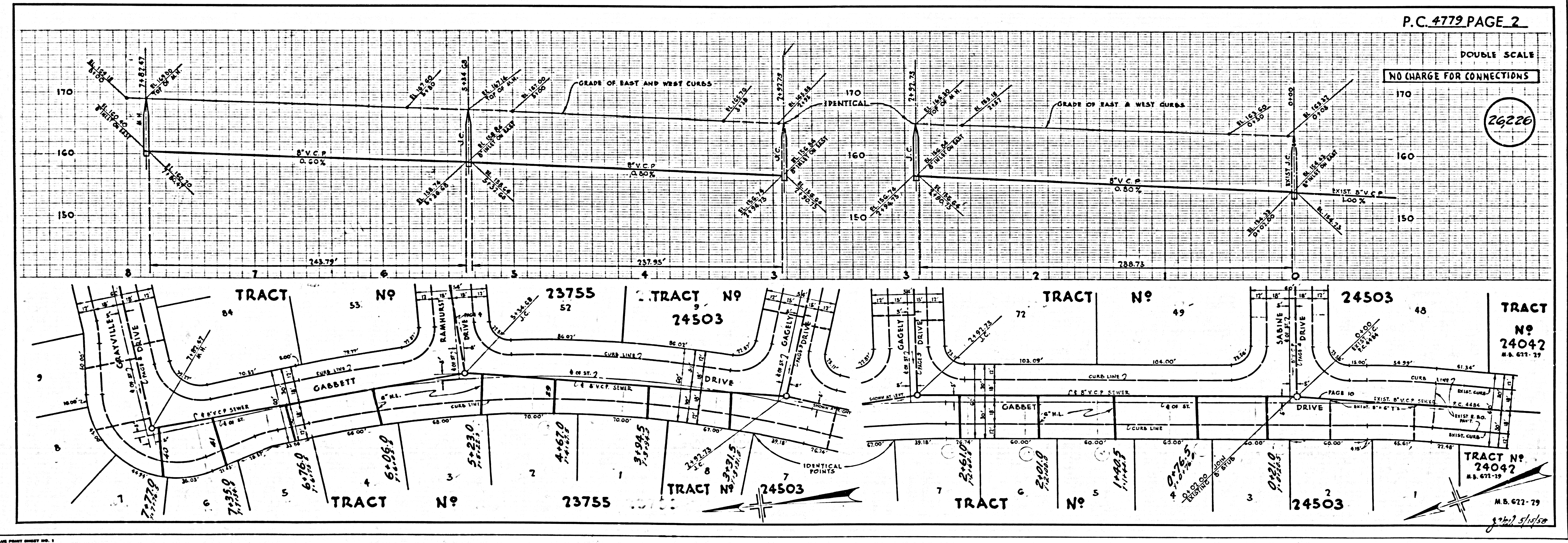
NO CHARGE FOR CONNECTIONS  
 E. Reeder 6-11-58

REVISION OF LOT NUMBERS FOR TR. N<sup>o</sup> 23755 & 24503 - SEZ. 8, 1958  
 CHECKED BY: J. W. Duda 6-10-58  
 OFFICE OF COUNTY ENG. REG. C.E. NO. 3406

NOTE: GRADES TO WHICH THIS IMPROVEMENT IS TO BE CONSTRUCTED ARE SHOWN ON PLANS AND PROFILES. GRADE POINTS FOR TOP OF CURBS, CENTER LINE OF STREETS, OR CENTER LINE OF ALLEYS ARE SHOWN BY CIRCLES ON PROFILES. AT ALL POINTS BETWEEN DESIGNATED POINTS THE GRADE SHALL BE ESTABLISHED SO AS TO CONFORM TO A STRAIGHT LINE DRAWN BETWEEN SAID DESIGNATED POINTS.  
 ELEVATIONS ARE IN FEET ABOVE U.S.C. & G.S. MEAN SEA LEVEL DATUM OF 1929.  
 THIS DRAWING AND THE DATA HEREON ARE HEREBY MADE A PART OF THE SPECIFICATIONS.  
 WORK SHALL BE CONSTRUCTED ACCORDING TO SPECIFICATIONS ON FILE IN THE OFFICE OF THE COUNTY ENGINEER AND SHALL BE PROSECUTED ONLY IN THE PRESENCE OF THE COUNTY ENGINEER.  
 BEFORE WORK CAN BE STARTED, THE CONTRACTOR MUST OBTAIN A PERMIT TO EXCAVATE IN COUNTY STREETS FROM THE L.A. COUNTY ROAD DEPARTMENT AND MAKE A DEPOSIT WITH THE COUNTY ENGINEER, ROOM 1224 MAIN AMERICAN BUILDING, 333 SO. BROADWAY SUFFICIENT TO COVER THE COST OF CONSTRUCTION INSPECTION AND RECORD PLANS.  
 APPROVAL OF THIS PLAN BY THE COUNTY OF LOS ANGELES DOES NOT CONSTITUTE A REPRESENTATION AS TO THE ACCURACY OF THE LOCATION OF OR THE EXISTENCE OR NON-EXISTENCE OF ANY UNDERGROUND UTILITY PIPES, OR STRUCTURE WITHIN THE LIMITS OF THIS PROJECT. THIS NOTE APPLIES TO ALL PAGES.  
 IF WORK IS TO BE DONE IN A STATE HIGHWAY, A PERMIT MUST BE OBTAINED FROM THE STATE OF CALIFORNIA, DIVISION OF HIGHWAYS, 138 SOUTH SPRING STREET.

COUNTY OF LOS ANGELES, CALIFORNIA

APPROVED, JOHN A. LAMBE, COUNTY ENGINEER  
 APPROVED, A. M. RAWN, CHIEF ENGINEER  
 BY: J. H. Hughes, SANITATION ENGINEER  
 BY: J. P. Williams, OFFICE ENGINEER  
 CHECKED BY: J. W. Duda 6-11-58  
 OFFICE OF COUNTY ENGINEER, REG. C.E. NO. 3406  
 RECOMMENDED BY: John L. Ester, REGIONAL ENGINEER, REG. C.E. NO. 3471



P.C. 4779 PAGE 2

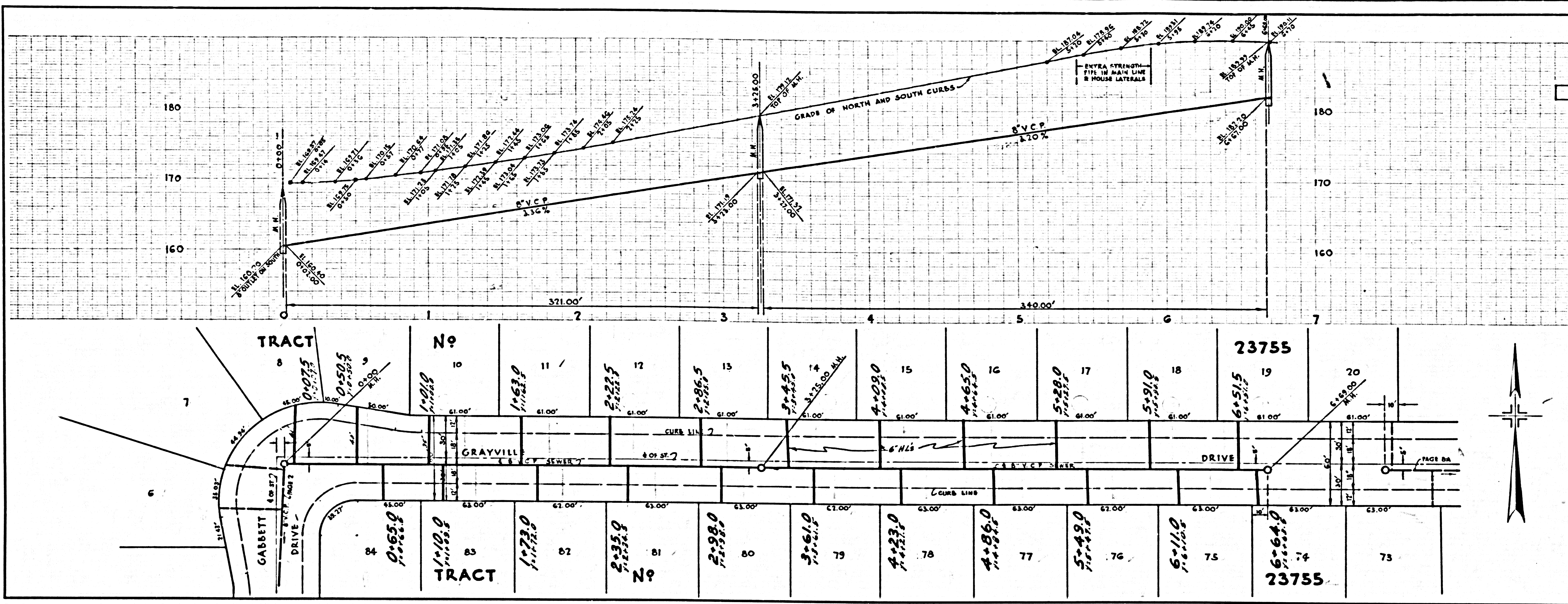
DOUBLE SCALE  
 NO CHARGE FOR CONNECTIONS

26226

U.S.G.P.S. 1943 EDITION, PLAIN PAPER, SHEET NO. 1

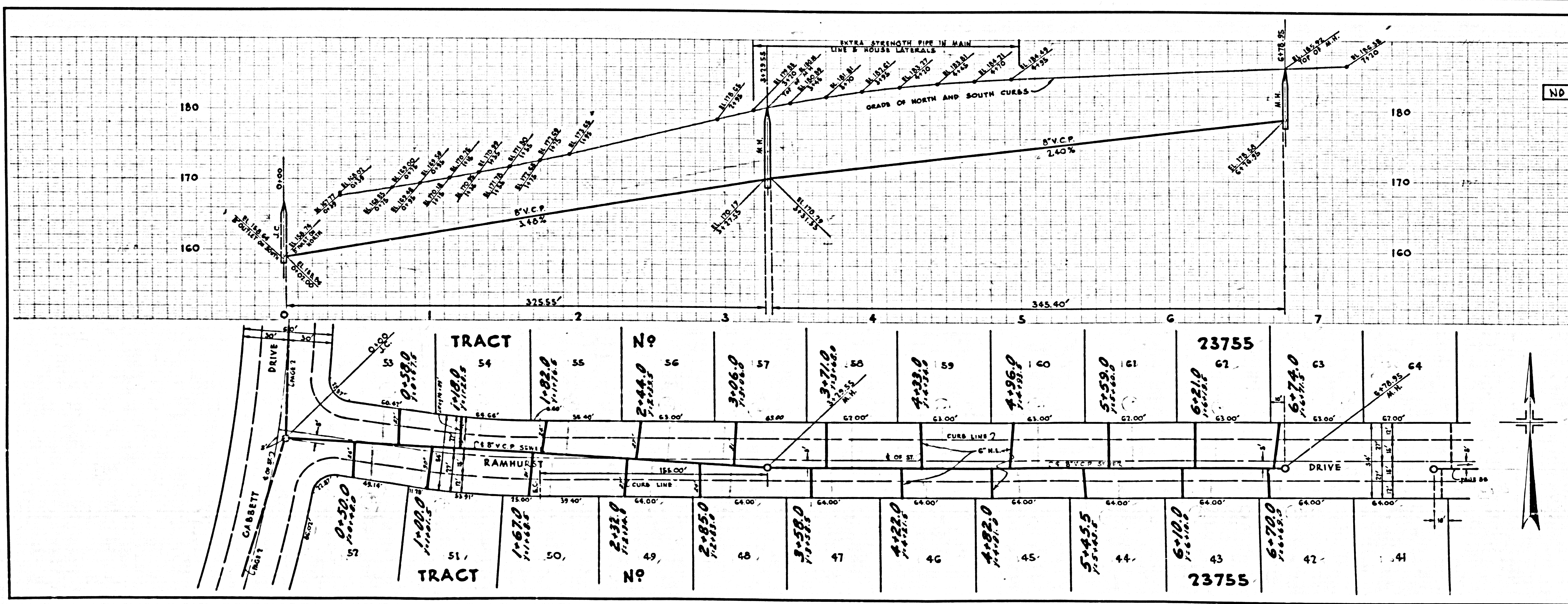
DOUBLE SCALE  
NO CHARGE FOR CONNECTIONS

26,227



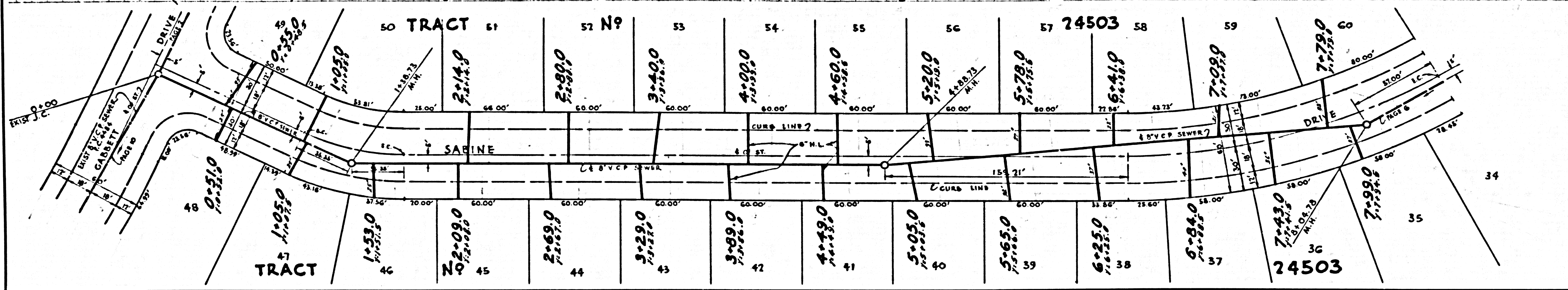
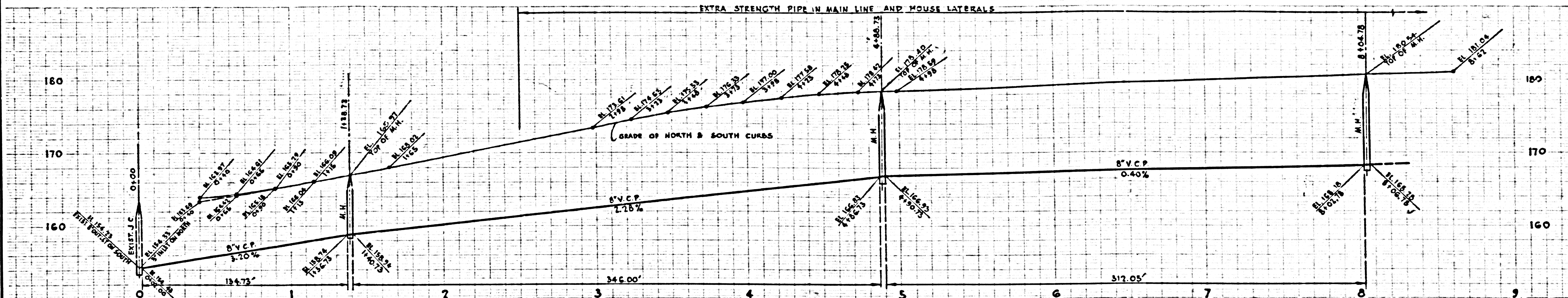
DOUBLE SCALE  
NO CHARGE FOR CONNECTIONS

26,228



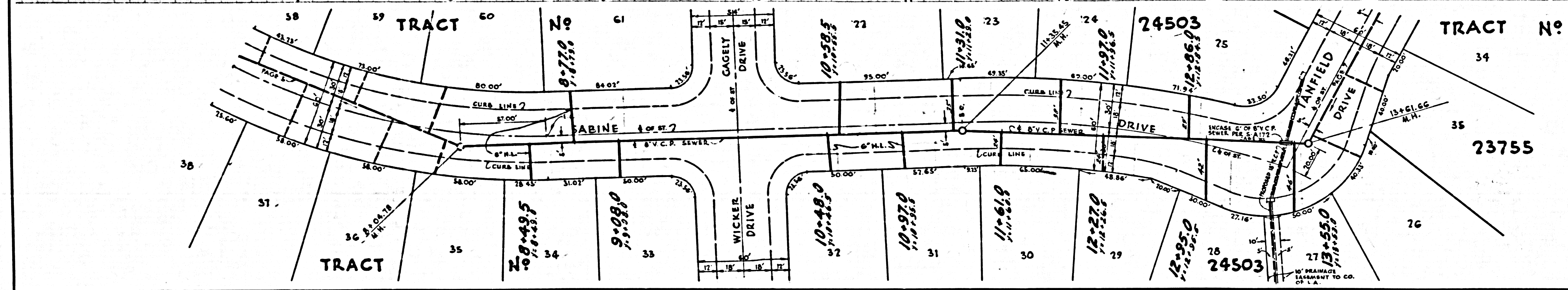
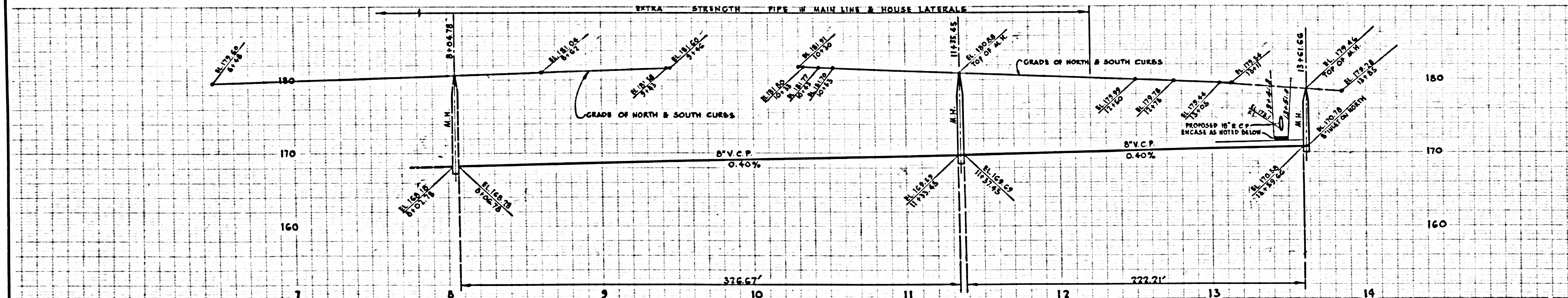
DOUBLE SCALE  
NO CHARGE FOR CONNECTIONS

26229



DOUBLE SCALE  
NO CHARGE FOR CONNECTIONS

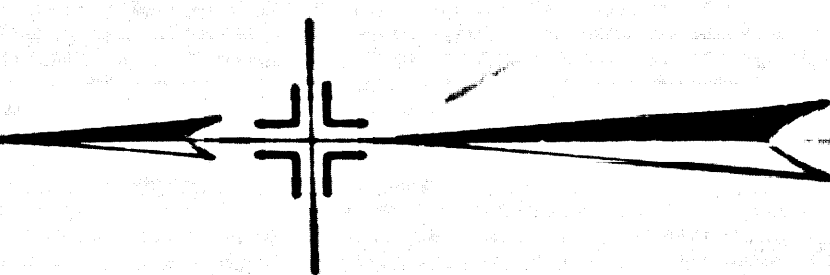
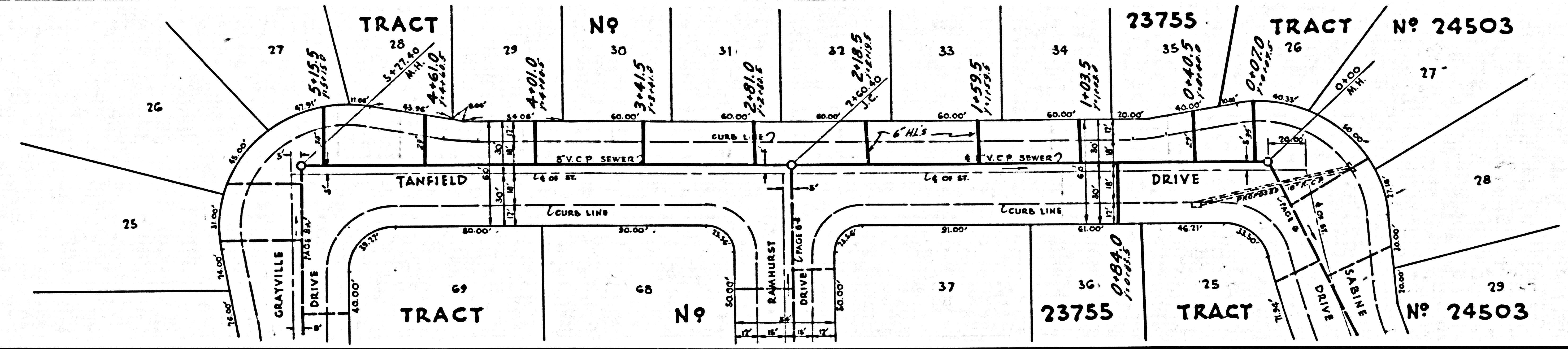
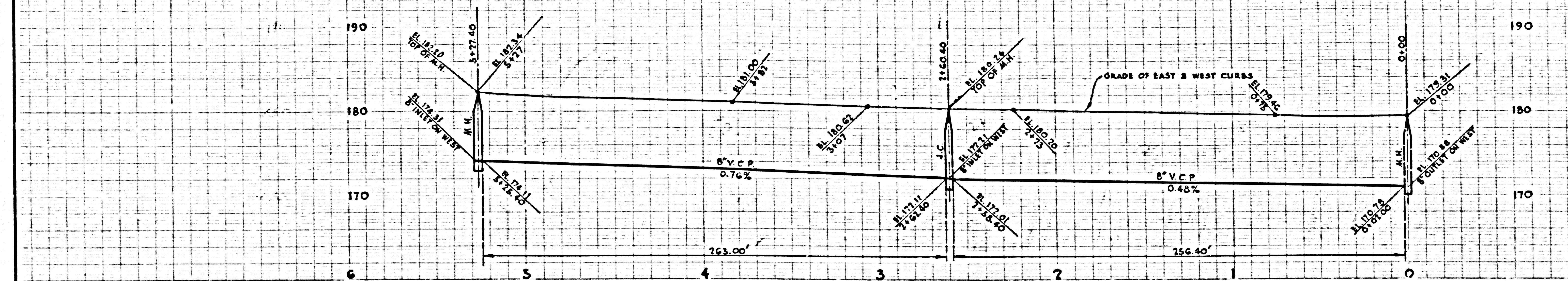
26230



DOUBLE SCALE

NO CHARGE FOR CONNECTIONS

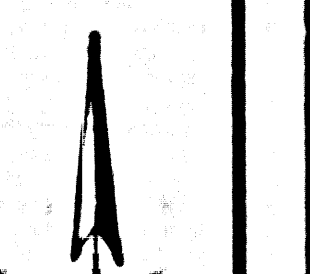
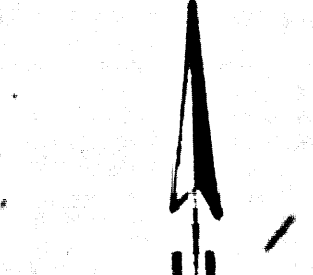
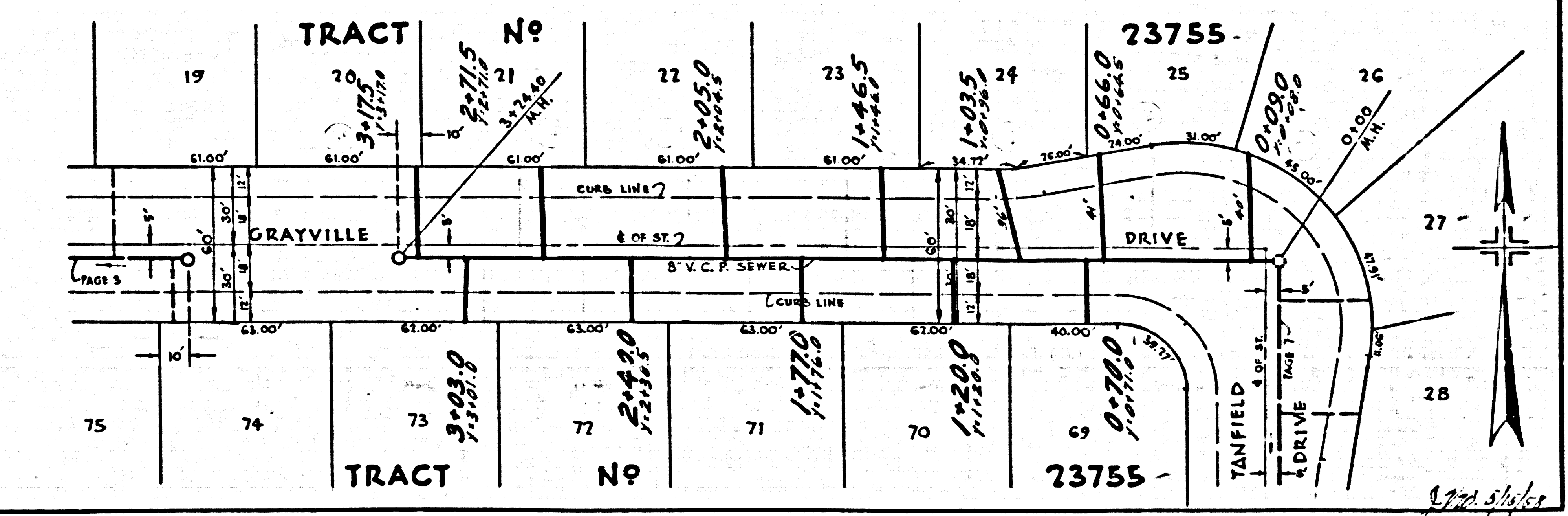
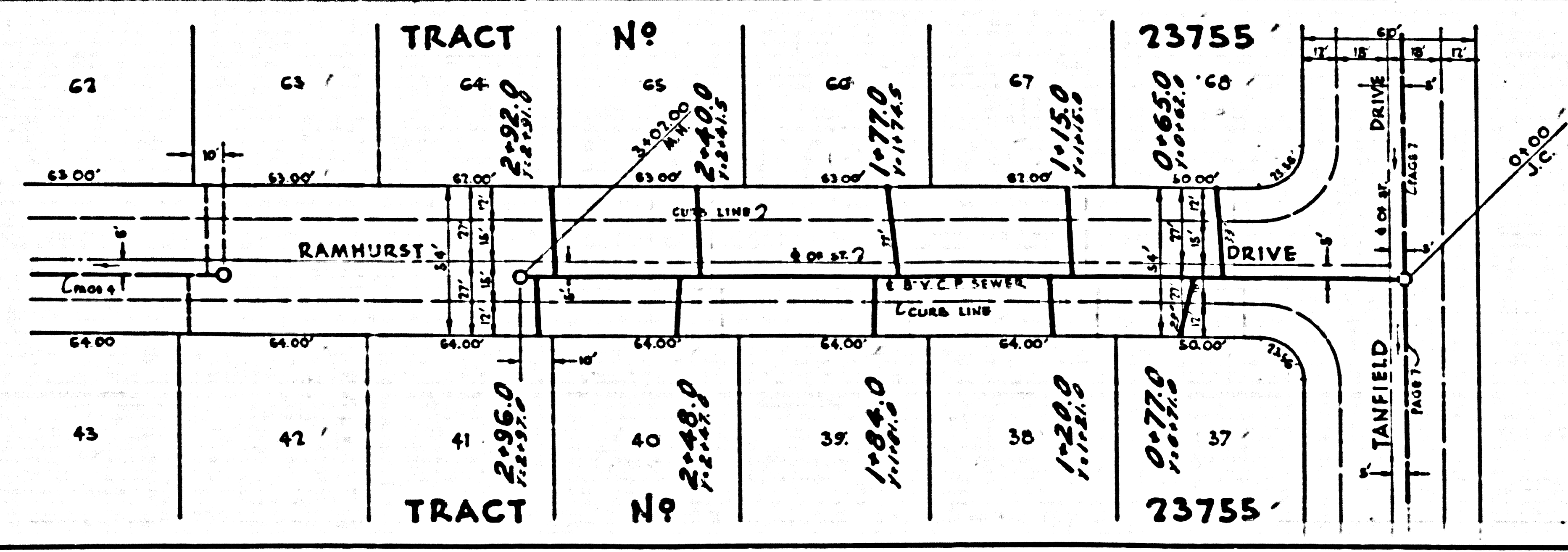
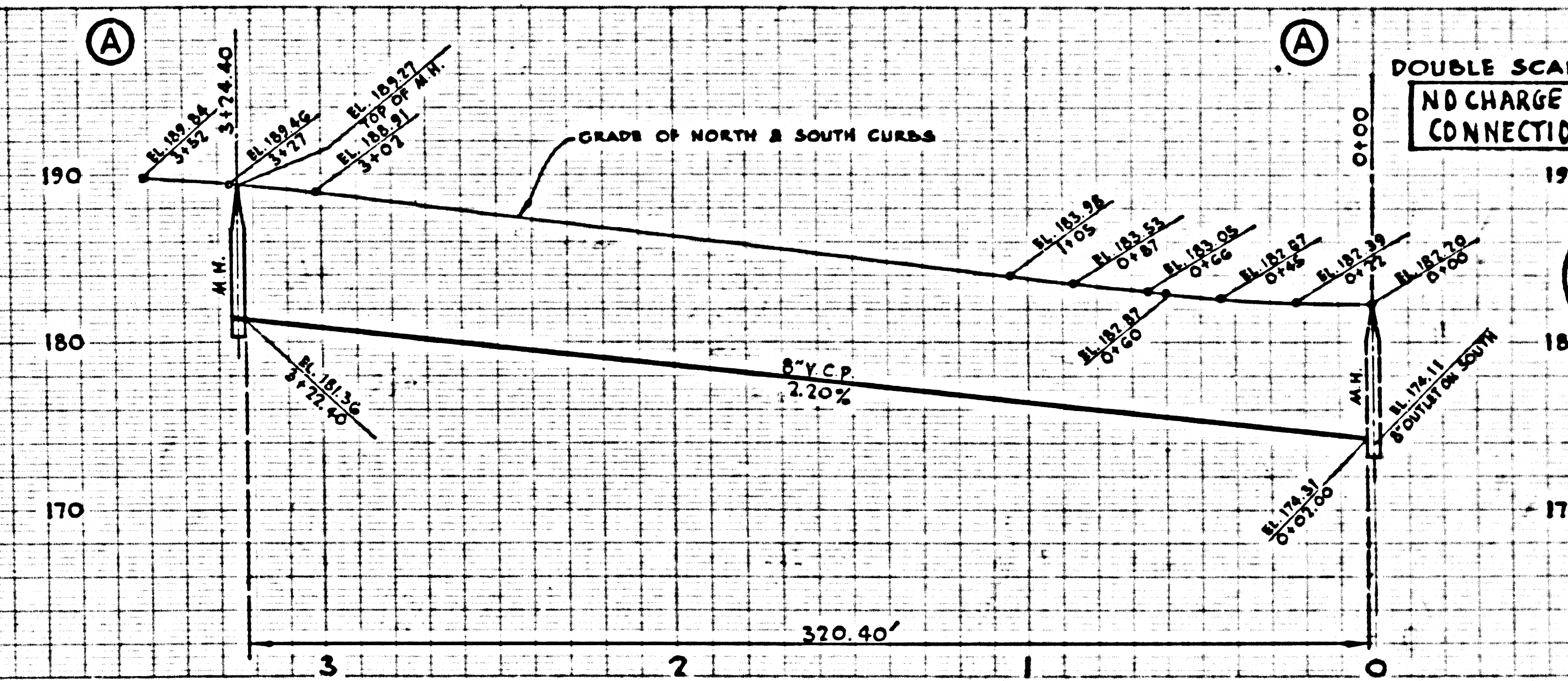
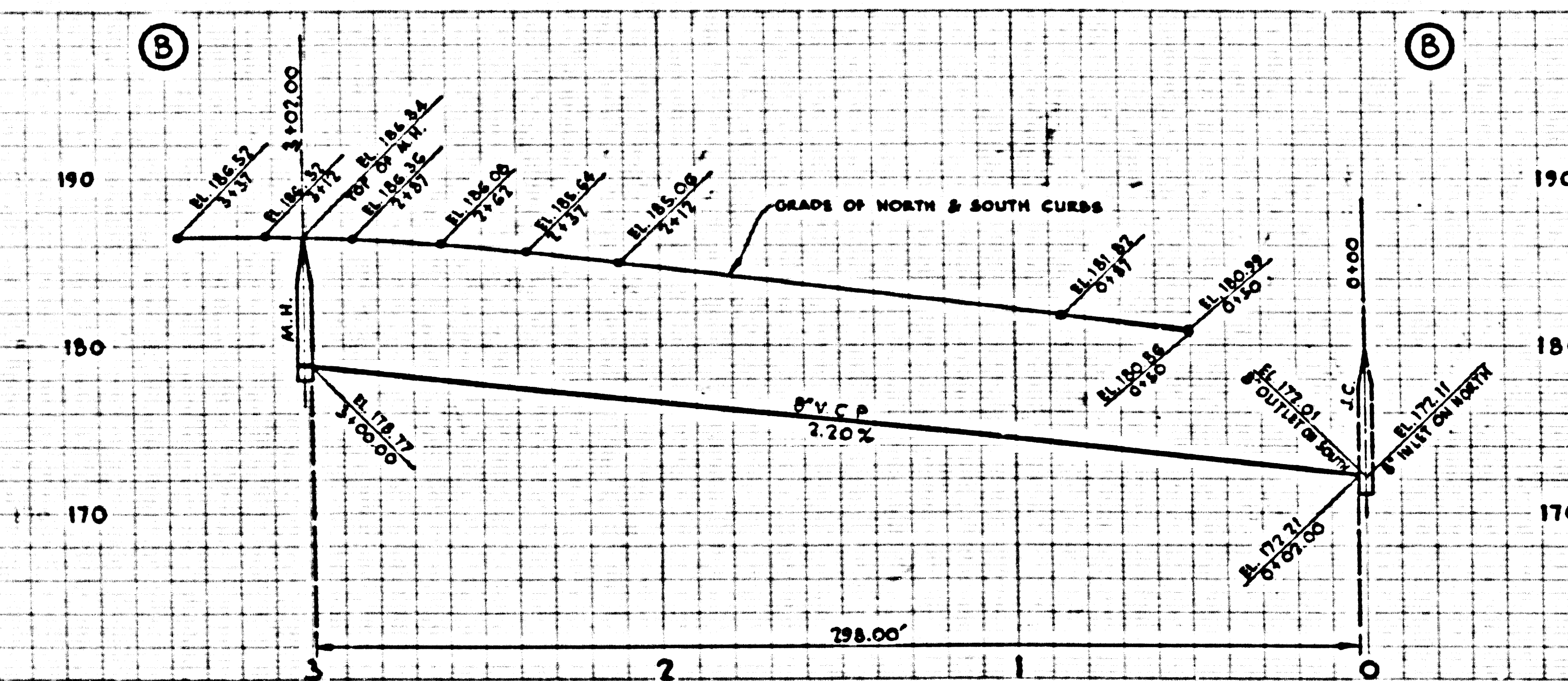
26231



DOUBLE SCALE

NO CHARGE FOR CONNECTIONS

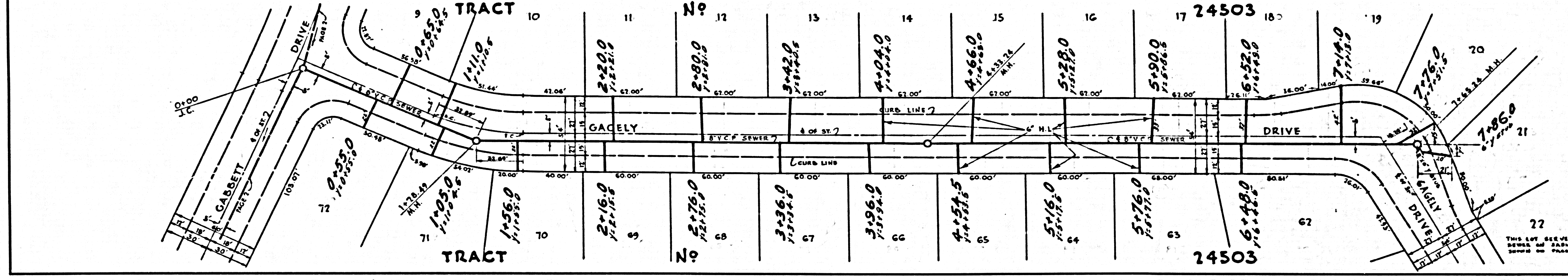
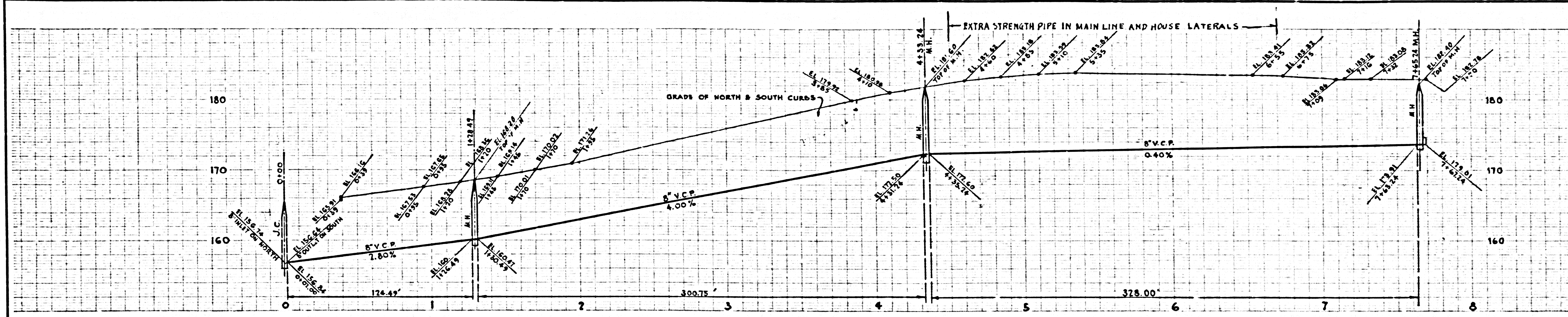
26232



DOUBLE SCALE

NO CHARGE FOR CONNECTIONS

26233



THIS LOT SERVED BY SEWER OF JARVIS BEING SHOWN ON PAGE 8

26233

DOUBLE SCALE

NO CHARGE FOR CONNECTIONS

26234

