

U.S. & A. CO. SURVEY 1036 ELEV. = 160.790 U.S. DATUM  
 CUT BRIDGE SOUTH END OF WEST HEADWALL  
 U.S.R.R. CO. MAIN LINE BRIDGE NO. 616

E. LOS ANGELES BLDG. DIST. NO. 6

PROFILE ALIGNMENT AND GRADE OF P.C. 4780  
 SANITARY SEWERS PAGE 1

TO BE CONSTRUCTED IN  
 RIGHT OF WAY IN  
 TRACT NO. 7777 LOT 1  
 MB 115 13-14

26242

TUBEWAY AVE. TRIUMPH ST. LEO AVE. PRIVATE STS.  
 PRIVATE CONTRACT NO. 4780

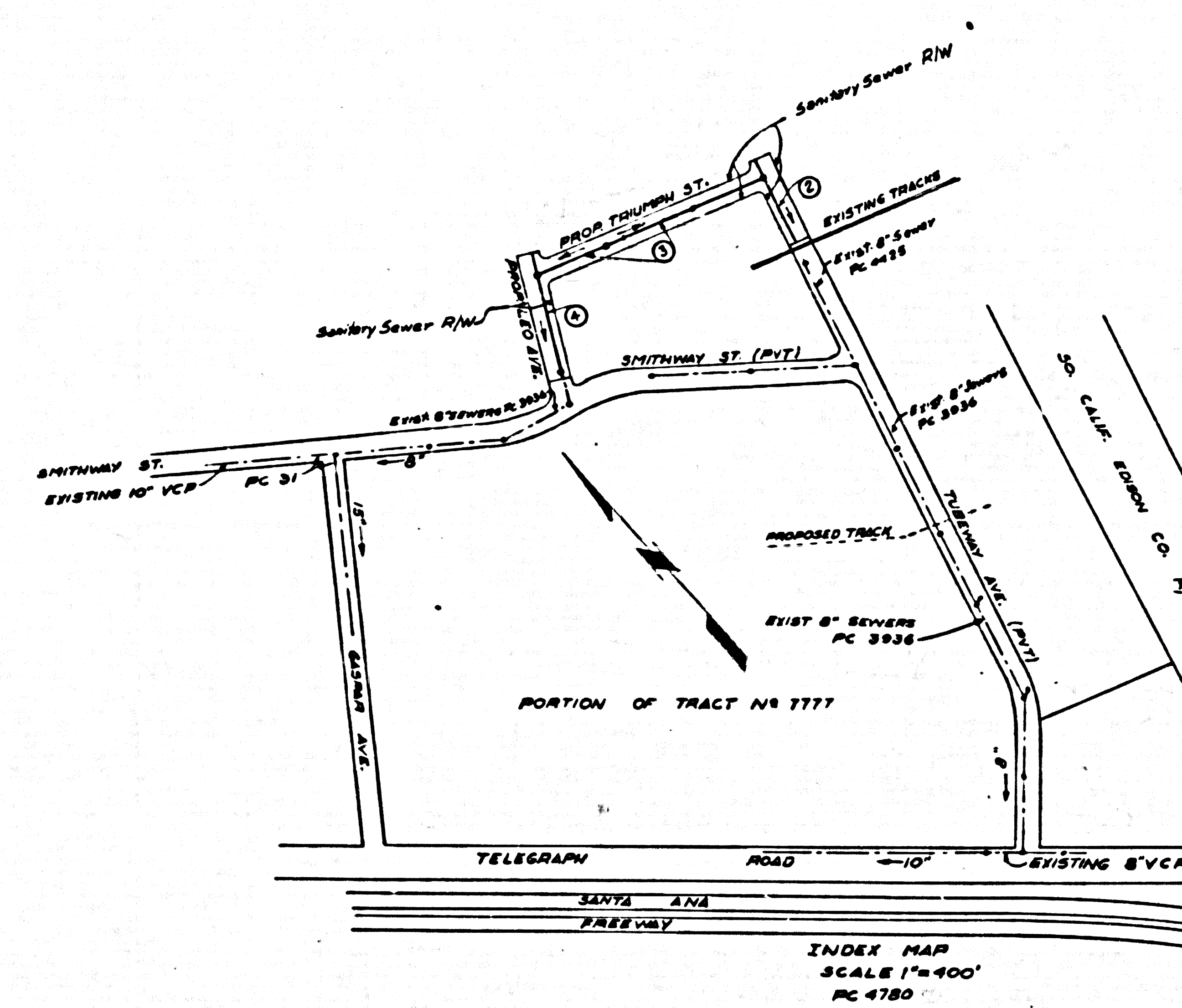
W.S. 36  
 2 SHEETS, 4 PAGES

SCALE: VERT. 1"=4'  
 HORIZ. 1"=40' MAY, 1958

PREPARED IN THE OFFICES OF  
 UNION PACIFIC RAILROAD COMPANY

By J.A. Montgomery  
 REG. E. NO. 9152

FOR LEGEND SEE PLAN NO. S-A-64



- NOTE:
- PROVIDE STAKES ON THE PROPERTY LINE OR PROPERTY LINES PRODUCED AT RIGHT ANGLES TO THE SEWER LINE AT THE CENTER LINE OF EACH MANHOLE.
  - NO REPRESENTATIVE OF THE COUNTY ENGINEER WILL SURVEY OR LAYOUT ANY PORTION OF THE WORK.
  - THE OWNER OR HIS AUTHORIZED REPRESENTATIVE SHALL FURNISH THE COUNTY ENGINEER WITH GRADE SHEETS AND STATION FOR ALL MAINS, LATERALS AND T BRANCHES AND SHALL PROVIDE STAKES FOR THEM AT THEIR PROPER LOCATIONS WITH STATIONING AND PLANNED MARKS. ANY CHANGE IN LOCATION SHALL BE REQUESTED IN WRITING BY THE OWNER OR HIS REPRESENTATIVE.
  - NO REVISIONS SHALL BE MADE IN THESE PLANS WITHOUT THE APPROVAL OF THE COUNTY ENGINEER.
  - USE STANDARD MANHOLE FRAMES AND COVERS, S-A-117
  - USE STANDARD STRENGTH PIPE
  - USE CEMENT MORTAR, HOUGH-LINE OR SPEED-SEAL FOR ALL WITHEDED CLAY PIPE JOINTS PER SPECS., SEC. 36-1-48
  - RESURFACE ALL TRENCH WITHIN PAVED AREA TO MEET L. A. COUNTY ROAD DEPT. OR CALIF. STATE HIGHWAY DEPT. REQUIREMENTS IN ACCORDANCE WITH PERMITS.
  - ENCASE FOUR FEET OF SEWER AT POINTS OF INTERFERENCE WITH POLES, S-A-119.
  - HOUSE LATERALS TO BE CONSTRUCTED WITH INVERTS AT PROPERTY LINE 6 FEET BELOW CURB GRADE EXCEPT AS NOTED.
  - ALL STRUCTURES SHALL BE BRICK SEWER STRUCTURES, S-A-114
  - FOR ALLOWABLE LEAKAGE TEST USE FORMULA NO. 1 SPECS., SEC. 34
  - MANHOLE TOPS IN UNIMPROVED RIGHTS-OF-WAY TO BE 6" ABOVE FINISHED GRADE.
  - THE PRIVATE ENGINEER IS TO FURNISH THE HOUSE LATERAL DEPTH AT THE PROPERTY LINE BELOW THE TOP OF THE CURB FOR EACH HOUSE LATERAL ON THE GRADE SHEET

NOTE: THE CONTRACTOR SHALL NOTIFY THE COUNTY ENGINEER DIVISION BY TELEPHONE, MADISON NINE FOUR SEVEN FOUR SEVEN, EXT. THREE SIX TWO, AT LEAST TWENTY FOUR HOURS BEFORE STARTING ANY WORK UNDER THIS CONTRACT

NO CHARGE FOR CONNECTIONS  
 7777 Lateral 7-21-58

NOTE: GRADES TO WHICH THE IMPROVEMENT IS TO BE CONSTRUCTED ARE SHOWN ON PLANS AND PROFILES. GRADE POINTS FOR TOP OF CURB, CENTER LINE OF STREET, OR CENTER LINE OF ALLEY ARE SHOWN IN CIRCLES ON PROFILES. AT ALL POINTS BETWEEN DESIGNATED POINTS THE GRADE SHALL BE ESTABLISHED SO AS TO CONFORM TO A STRAIGHT LINE DRAWN BETWEEN SAID DESIGNATED POINTS.

ELEVATIONS ARE IN FEET ABOVE U.S.C. & G.S. MEAN SEA LEVEL DATUM OF 1929

THIS DRAWING AND THE DATA HEREON ARE HEREBY MADE A PART OF THE SPECIFICATIONS

WORK SHALL BE CONSTRUCTED ACCORDING TO SPECIFICATIONS ON FILE IN THE OFFICE OF THE COUNTY ENGINEER AND SHALL BE PROSECUTED ONLY IN THE PRESENCE OF THE COUNTY ENGINEER

BEFORE WORK CAN BE STARTED, THE CONTRACTOR MUST OBTAIN A PERMIT TO EXCAVATE IN COUNTY STREETS FROM THE L. A. COUNTY ROAD DEPT., DEPARTMENT OF PUBLIC WORKS AND MAKE A DEPOSIT WITH THE COUNTY ENGINEER ROOM 508 AMERICAN BUILDING, 211 SO. BROADWAY SUFFICIENT TO COVER THE COST OF CONSTRUCTION INSPECTION AND INVOICES PLANS

APPROVAL OF THIS PLAN BY THE COUNTY OF LOS ANGELES DOES NOT CONSTITUTE A REPRESENTATION AS TO THE ACCURACY OF THE LOCATION OF OR THE EXISTENCE OR NON-EXISTENCE OF ANY UNDERGROUND UTILITY PIPE, OR STRUCTURE WITHIN THE LIMITS OF THE PROJECT. THIS NOTE APPLIES TO ALL PAGES

IF WORK IS TO BE DONE IN A STATE HIGHWAY, A PERMIT MUST BE OBTAINED FROM THE STATE OF CALIFORNIA, DIVISION OF HIGHWAYS, 128 SOUTH SPRING STREET.

COUNTY OF LOS ANGELES, CALIFORNIA

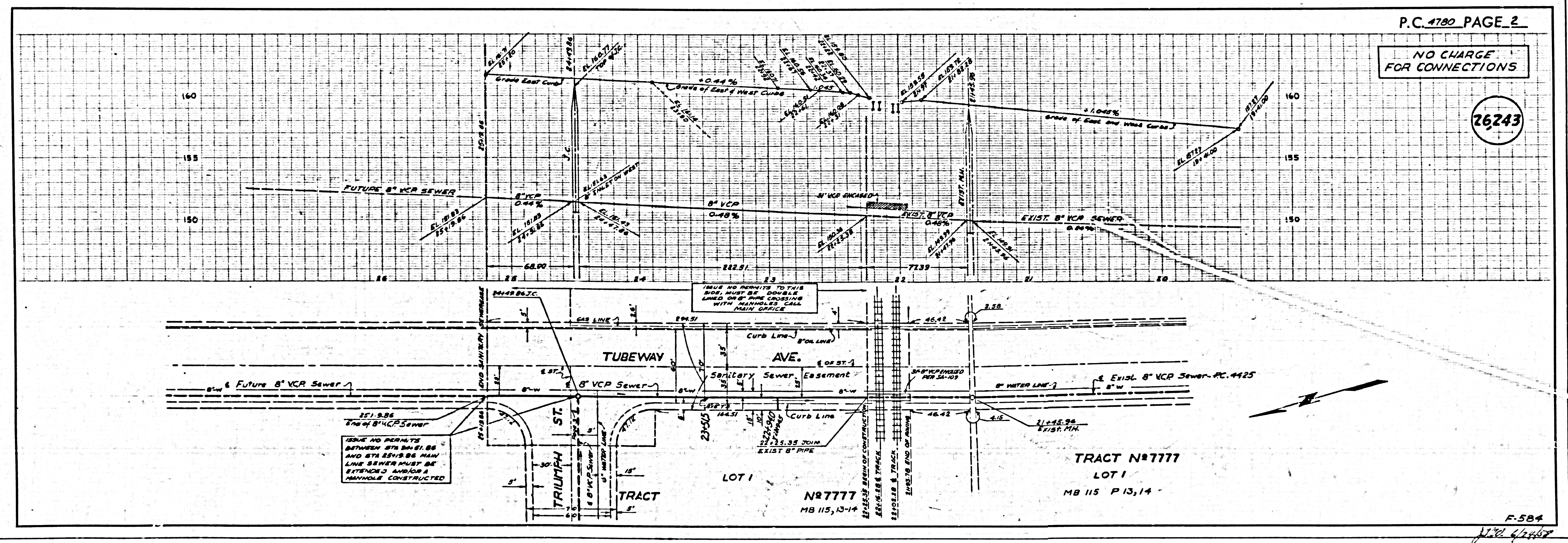
APPROVED, JOHN A. LAMBE, COUNTY ENGINEER

APPROVED, A. M. RAWN, CHIEF ENGINEER  
 SAN. DIST. NO. 2

BY J.A. Montgomery  
 SANITATION ENGINEER

CHECKED BY G. W. Duda 1-23-58  
 OFFICE OF COUNTY ENGINEER, BLDG. C. & NO. 9406

APPROVED BY INDUSTRIAL WASTE DIVISION  
 BY Bernard Volzky 1/22/58



P.C. 4780 PAGE 2

NO CHARGE FOR CONNECTIONS

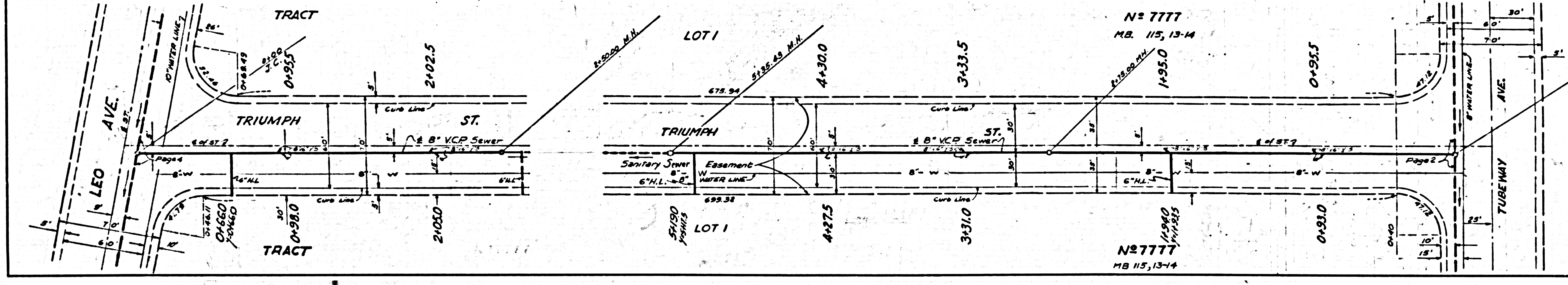
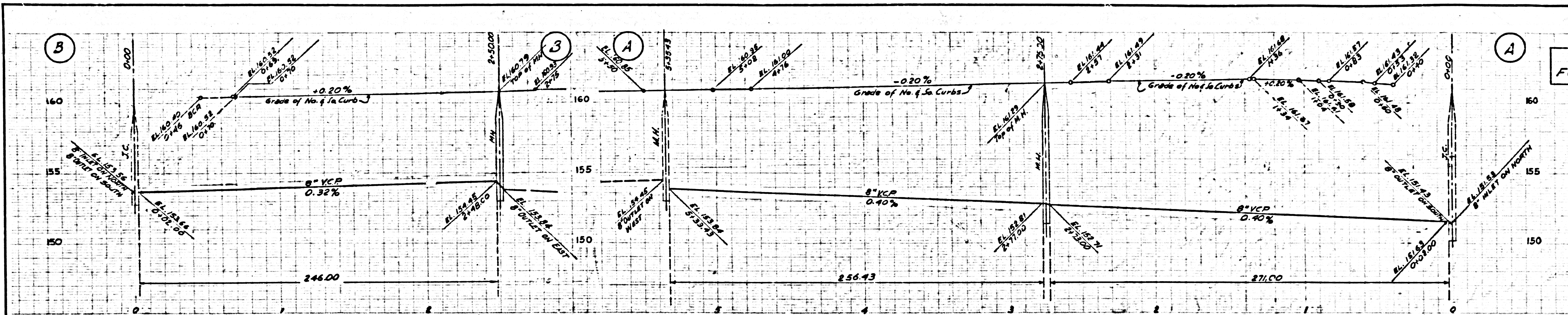
26243

TRACT NO. 7777  
 LOT 1  
 MB 115, 13-14

F-584  
 1/22/58

NO CHARGE FOR CONNECTIONS

26244



NO CHARGE FOR CONNECTIONS

26245

