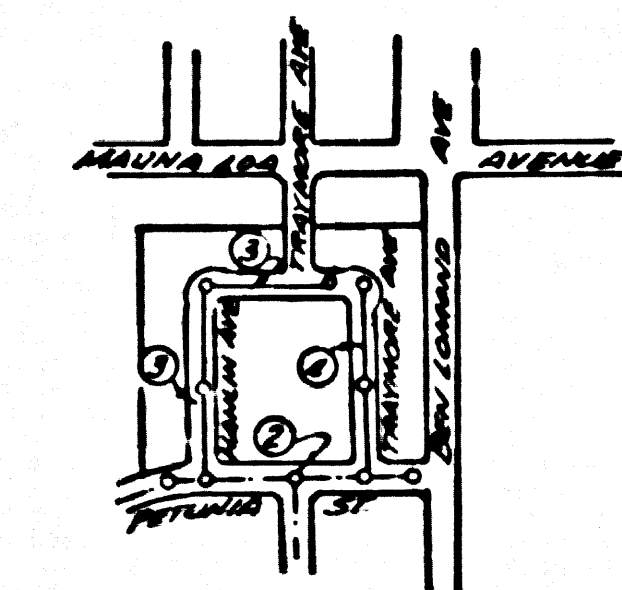


SAN DIMAS BLDG. DIST. NO. 10

PROFILE ALIGNMENT AND GRADE OF P.C. 4785  
 SANITARY SEWERS PAGE 1  
 TO BE CONSTRUCTED IN  
 TRACT No 21397 (26.131)

- NOTE:  
 PROVIDE STAKES ON THE PROPERTY LINE OR PROPERTY LINES PRODUCED AT RIGHT ANGLES TO THE SEWER LINE AT THE CENTER LINE OF EACH MANHOLE.
- NO REPRESENTATIVE OF THE COUNTY ENGINEER WILL SURVEY OR LAYOUT ANY PORTION OF THE WORK.
- THE OWNER OR HIS AUTHORIZED REPRESENTATIVE SHALL FURNISH THE COUNTY ENGINEER WITH GRADE SHEETS AND STATION FOR ALL HOUSE LATERALS AND Y BRANCHES AND SHALL PROVIDE STAKES FOR THEM AT THEIR PROPER LOCATIONS WITH STATIONING PLAINLY MARKED. ANY CHANGE IN LOCATION SHALL BE REQUESTED IN WRITING BY THE OWNER OR HIS REPRESENTATIVE.
- NO REVISIONS SHALL BE MADE IN THESE PLANS WITHOUT THE APPROVAL OF THE COUNTY ENGINEER.
- USE STANDARD MANHOLE FRAMES AND COVERS, S-A-117.
  - USE STANDARD STRENGTH PIPE.
  - USE CEMENT MORTAR OF "STANDARD GRADE" OR "MIDDLE GRADE" FOR ALL M.C.R. JOINTS PER SPECS. SECS. 261-140.
  - RESURFACE ALL TRENCH WITHIN PAVED AREA TO MEET L.A. COUNTY ROAD DEPT., OR CALIF. STATE HIGHWAY DEPT. REQUIREMENTS IN ACCORDANCE WITH PERMITS.
  - ENCASE FOUR FEET OF SEWER AT POINTS OF INTERFERENCE WITH POLES, CASE # S-A-128.
  - HOUSE LATERALS TO BE CONSTRUCTED WITH INVERTS AT PROPERTY LINE  $\frac{1}{2}$  FEET BELOW CURB GRADE.
  - ALL STRUCTURES SHALL BE BRICK SEWER STRUCTURES, S-A-184.
  - FOR ALLOWABLE LEAKAGE TEST USE FORMULA NO. 1 SPECS. SEC. 54.
  - MANHOLE TOPS IN UNIMPROVED RIGHTS-OF-WAY TO BE 6" ABOVE FINISHED GRADE.
  - The Private Engineer is to furnish the House Lateral depth of the Property Line below the Top of Curb elevation for each House Lateral on the grade sheet.

PRIVATE CONTRACT NO. 4785  
 W.S. 47  
 2 SHEETS, 2 PAGES  
 SCALE: HORIZ. 1" = 40' VERT. 1" = 4'  
 MAY, 1958  
 PREPARED IN THE OFFICES OF  
 L. FREDERICK PACK  
 140 N. GARDNER ST.  
 BY: *L. Frederick Pack*  
 REG. C. E. NO. 2422



INDEX MAP  
 TRACT NO. 21397  
 P.C. 4785  
 SCALE 1" = 600'

BRANCH MARK - S.E. 148' ELEV. 691.01  
 L.B. & M. CENTER North Headwall @  
 NW Corner Mountain Avenue & Grand  
 Avenue.

THE CONTRACTOR SHALL NOTIFY THE CONSTRUCTION  
 STATION DIVISION BY TELEPHONE, ADDRESSES  
 34747 EXT. 362, AT LEAST 24 HRS. BEFORE  
 STARTING ANY WORK UNDER THIS CONTRACT.

NO CHARGE FOR  
 CONNECTIONS  
 7.790 Division 6-13-58

NOTE:  
 GRADES TO WHICH THIS IMPROVEMENT IS TO BE CONSTRUCTED ARE SHOWN ON PLANS AND PROFILES. GRADE POINTS FOR TOP OF CURBS, CENTER LINE OF STREETS, OR CENTER LINE OF ALLEYS ARE SHOWN BY CIRCLES ON PROFILES. AT ALL POINTS BETWEEN DESIGNATED POINTS THE GRADE SHALL BE ESTABLISHED SO AS TO CONFORM TO A STRAIGHT LINE DRAWN BETWEEN SAID DESIGNATED POINTS.

ELEVATIONS ARE IN FEET ABOVE U.S.C. & G.S. MEAN SEA LEVEL, DATUM 1929.

THIS DRAWING AND THE DATA HEREON ARE HEREBY MADE A PART OF THE SPECIFICATIONS.

WORK SHALL BE CONSTRUCTED ACCORDING TO SPECIFICATIONS ON FILE IN THE OFFICE OF THE COUNTY ENGINEER AND SHALL BE PROSECUTED ONLY IN THE PRESENCE OF THE COUNTY ENGINEER.

BEFORE WORK CAN BE STARTED THE CONTRACTOR MUST OBTAIN A PERMIT TO EXCAVATE IN COUNTY STREETS FROM THE L.A. COUNTY ROAD DEPT. (DEPT. 14) AND MAKE A DEPOSIT WITH THE COUNTY ENGINEER, ROOM 224 PAV. AMERICAN BLDG., 125 SO. BROADWAY SUFFICIENT TO COVER THE COST OF CONSTRUCTION INSPECTION AND RECORD PLANS.

APPROVAL OF THIS PLAN BY THE COUNTY OF LOS ANGELES DOES NOT CONSTITUTE A REPRESENTATION AS TO THE ACCURACY OF THE LOCATION OF OR THE EXISTENCE OR NON-EXISTENCE OF ANY UNDERGROUND UTILITY PIPE, OR STRUCTURE WITHIN THE LIMITS OF THIS PROJECT. THIS NOTE APPLIES TO ALL PAGES.

IF WORK IS TO BE DONE IN A STATE HIGHWAY, A PERMIT MUST BE OBTAINED FROM THE STATE OF CALIFORNIA, DIVISION OF HIGHWAYS, 130 SOUTH SPRING STREET.

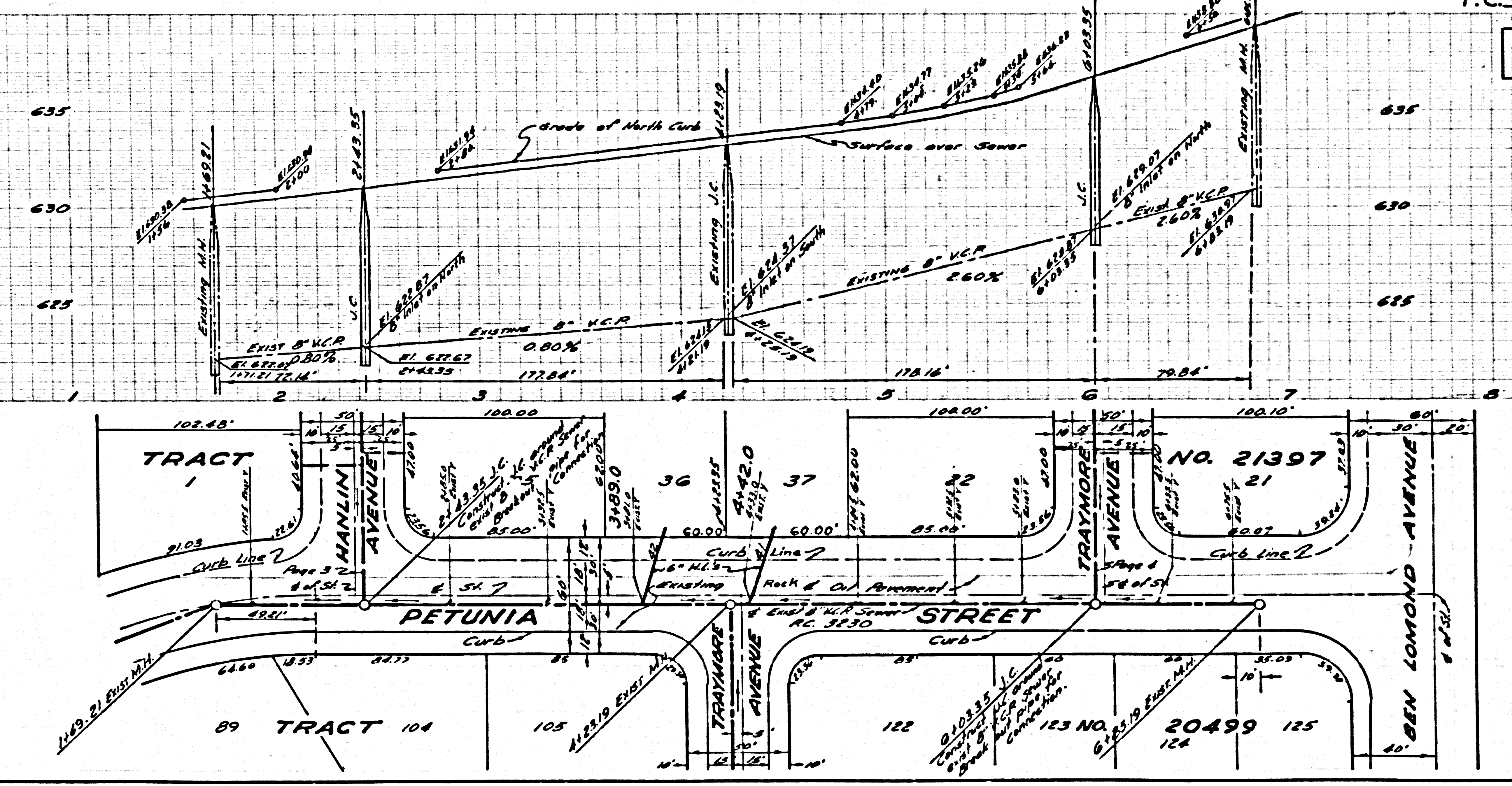
COUNTY OF LOS ANGELES, CALIFORNIA

APPROVED, JOHN A. LAMBE, COUNTY ENGINEER  
 APPROVED, A. M. RAWN, CHIEF ENGINEER  
 (D. SAN. DIST. NO. 22)  
 BY: *H. J. ...* ASST. SANITATION ENGINEER  
 CHECKED BY: *...* OFFICE ENGINEER  
 OFFICE OF COUNTY ENGINEER, REG. C. E. NO. 2406

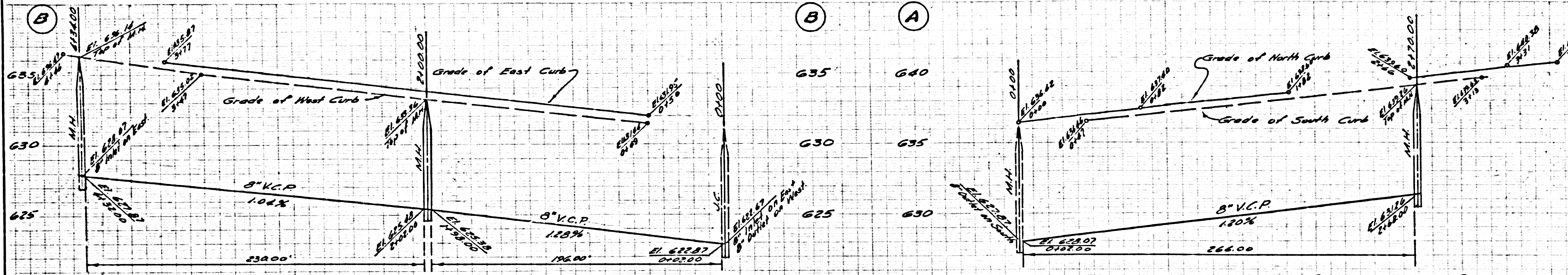
P.C. 4785 PAGE 2

NO CHARGE FOR  
 CONNECTIONS

(26.132)

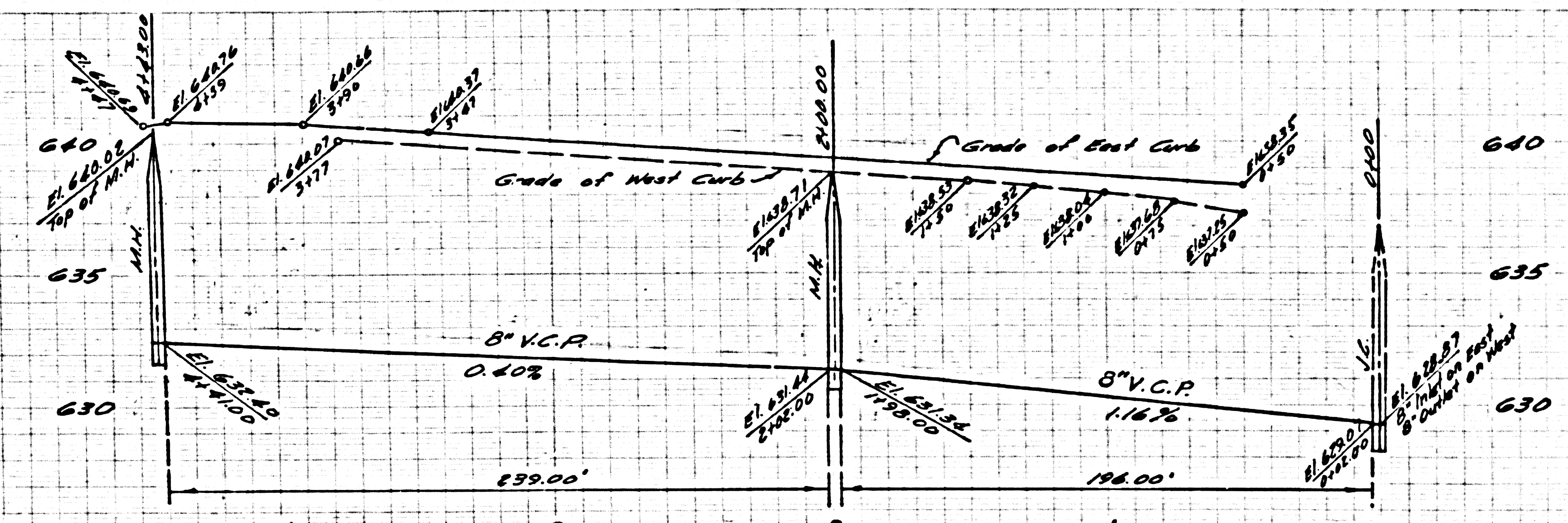
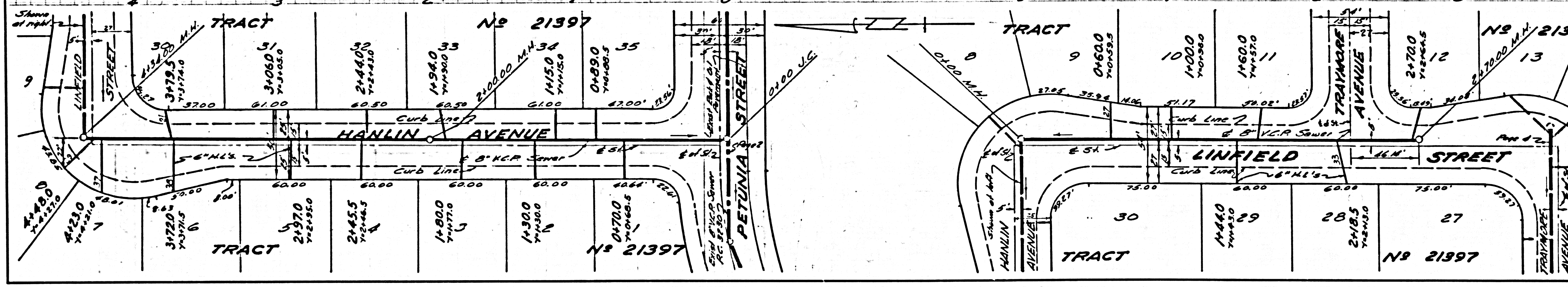


AS 4922



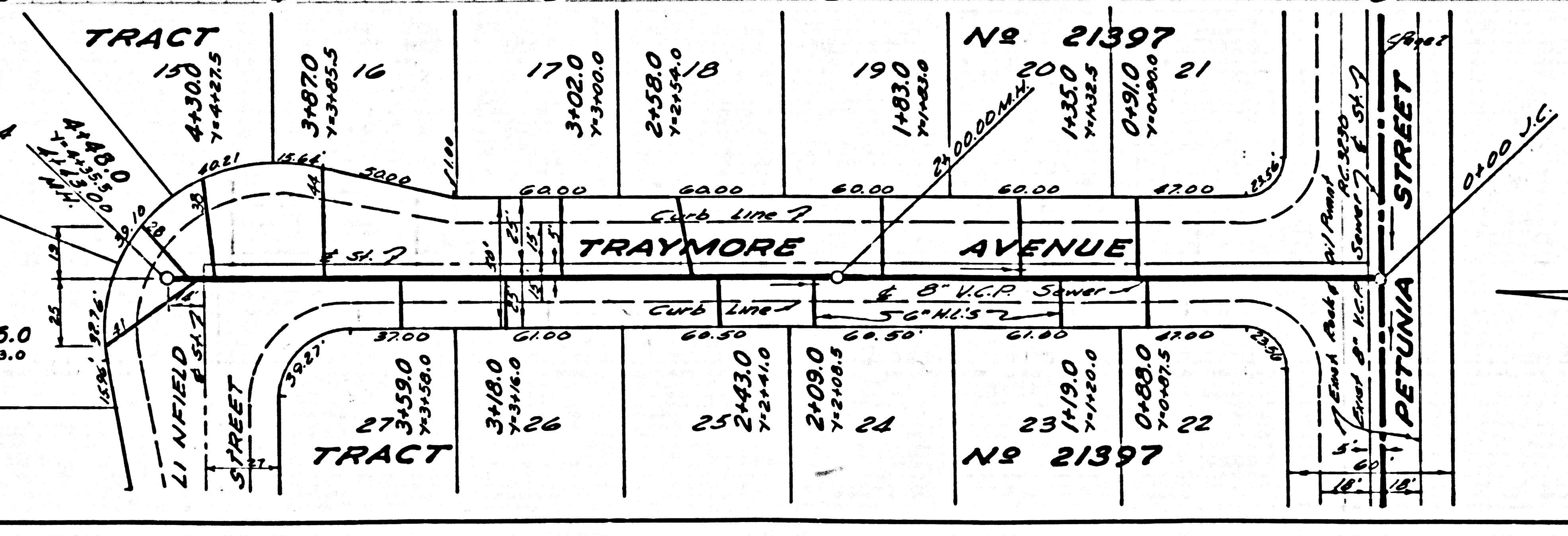
NO CHARGE FOR CONNECTIONS

26,133



NO CHARGE FOR CONNECTIONS

26,134



NO CHARGE FOR CONNECTIONS

26,134