

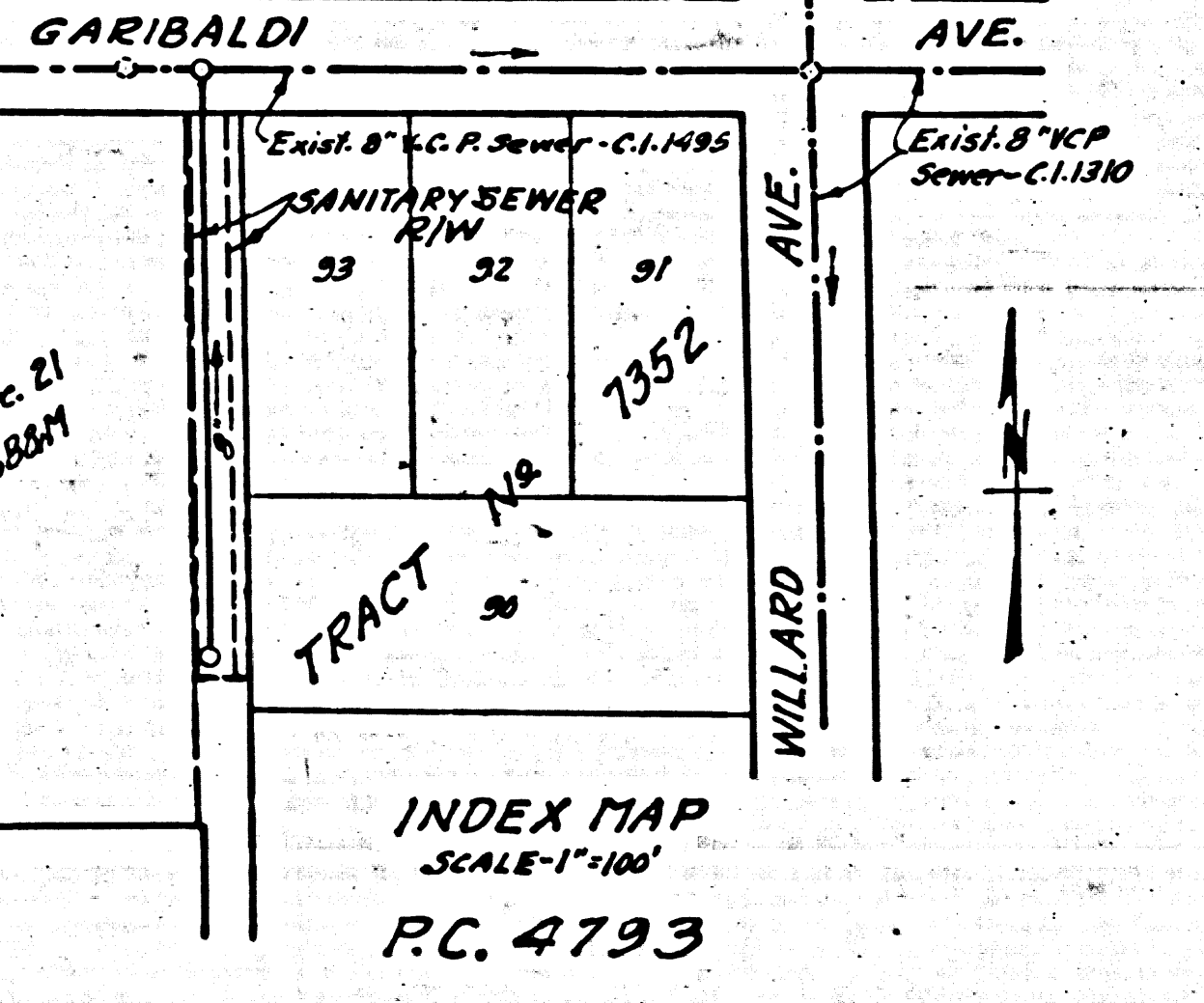
BM 7E-228, Elev. 451.177, C.B. 1489 pp. 134
Garibaldi Ave. & Willard Ave. S.E. Cor.
8 1/2 Spk. in curb, 6' E. of E. and C.C.

TEMPLE CITY BLDG. DIST. No 5

NOTE:
PROVIDE STAKES ON THE PROPERTY LINES OR PROPERTY LINES PROVIDED AT RIGHT ANGLES TO THE SEWER LINE AT THE CENTER LINE OF EACH MANHOLE.
NO REPRESENTATIVE OF THE COUNTY ENGINEER WILL SURVEY OR LAYOUT ANY PORTION OF THE WORK.
THE OWNER OR HIS AUTHORIZED REPRESENTATIVE SHALL FURNISH THE COUNTY ENGINEER WITH GRADE SHEETS AND STATIONS FOR ALL INSIDE LATERALS AND Y BRANCHES AND SHALL PROVIDE STAKES FOR THEM AT THEIR PROPER LOCATIONS WITH STATIONS PLAINLY MARKED. ANY CHANGE IN LOCATION SHALL BE REQUESTED IN WRITING BY THE OWNER OR HIS REPRESENTATIVE.
NO REVISION SHALL BE MADE IN THESE PLANS WITHOUT THE APPROVAL OF THE COUNTY ENGINEER.
1. USE STANDARD MANHOLE FRAMES AND COVERS 5'-0" DIA., EXCEPT AS NOTED.
2. USE STANDARD STRENGTH PIPE.
3. USE CEMENT MORTAR OR "WEDER-LOCK" OR "SPEED-SEAL" FOR ALL VCP JOINTS PER SPECS. SEC. 34.4.8
4. RESURFACE ALL TRENCH WITHIN PAVED AREAS TO MEET L.A. COUNTY ROAD DEPT. REQUIREMENTS IN ACCORDANCE WITH PERMIT.
5. ENCASE FOUR FEET OF SEWER AT POINTS OF INTERFERENCE WITH POLES. CASE 3E, S-0-172.
6. ALL STRUCTURES SHALL BE BACK SEWER STRUCTURES, S-0-100, EXCEPT AS NOTED.
7. FOR ALLOWABLE LEAKAGE TEST, USE FORMULA N.A.1, SPEC. SEC. 34.
8. MANHOLE TOPS IN IMPROVED RIGHTS OF WAY TO BE FLUSH WITH FINISH GRADE.
9. THE CONTRACTOR SHALL NOTIFY THE CONTRACTING & STRENGTH DIVISION BY TELEPHONE (462-2471), EXT. 261, AT LEAST 24 HOURS BEFORE STARTING ANY WORK ON THIS CONTRACT.

COLLECT CHARGE \$3.00 PER FRI. FT.
ALSO, MUST OBTAIN R/W TO SEWER (WILLARD AVE.)
COLLECT CHARGES AS INDICATED AS NOTED

Sheet	Page
1	1



TRIM LINE 7
PROFILE, ALIGNMENT AND GRADE OF
SANITARY SEWER
TO BE CONSTRUCTED IN

PC. 4793
ONE SHEET
A SANITARY SEWER R/W
WEST OF WILLARD AVE.
PRIVATE CONTRACT No 4793
W.S. 44
ONE SHEET
NOV. 1955
PREPARED IN THE OFFICES OF
CHAS. E. GLIDDEN
REG. C.E. No. 7840
FOR LEGEND SEE PLAN No. 50-6A

NOTES:
Grades to which this improvement is to be constructed are shown on plans and profiles. Grade points for top of curbs, center line of streets, or center line of alleys are shown by circles on profiles. All points between designated points the grade shall be established as to conform to a straight line drawn between said designated points.
Elevations are in feet above U.S.C. & G.S. Sea level datum of 1929.
This drawing and the data hereon are hereby made a part of the specifications.
Work shall be constructed according to specifications on file in the office of the County Engineer and shall be prosecuted only in the presence of the County Engineer.
Before work can be started, the contractor must obtain a permit to excavate in County streets from the L.A. County Road Dept., Dist. No. 1, and make a deposit with the County Engineer, Room 308, 253 So. Broadway, sufficient to cover the cost of construction inspection and record plans.
Approval of this plan by the County of Los Angeles does not constitute a representation as to the accuracy of the location of or the existence or non-existence of any underground utility, pipe or structure within the limits of this project. This note applies to all sheets.
If work is to be done in a State Highway, a permit must be obtained from the State of California, Division of Highways, 120 South Spring Street.

COUNTY OF LOS ANGELES, CALIFORNIA
APPROVED, JOHN A. LAMBIE, COUNTY ENGINEER
APPROVED, A.M. RANN, Chief Engineer, San. Dist. No. 15
By: [Signature] Sanitation Engineer
By: [Signature] Office Engineer
CHECKED BY: [Signature] U.C.S.B.
Office of County Engineer Reg. C.E. No. 2466

R/W West of Willard Ave.
PC. 4793