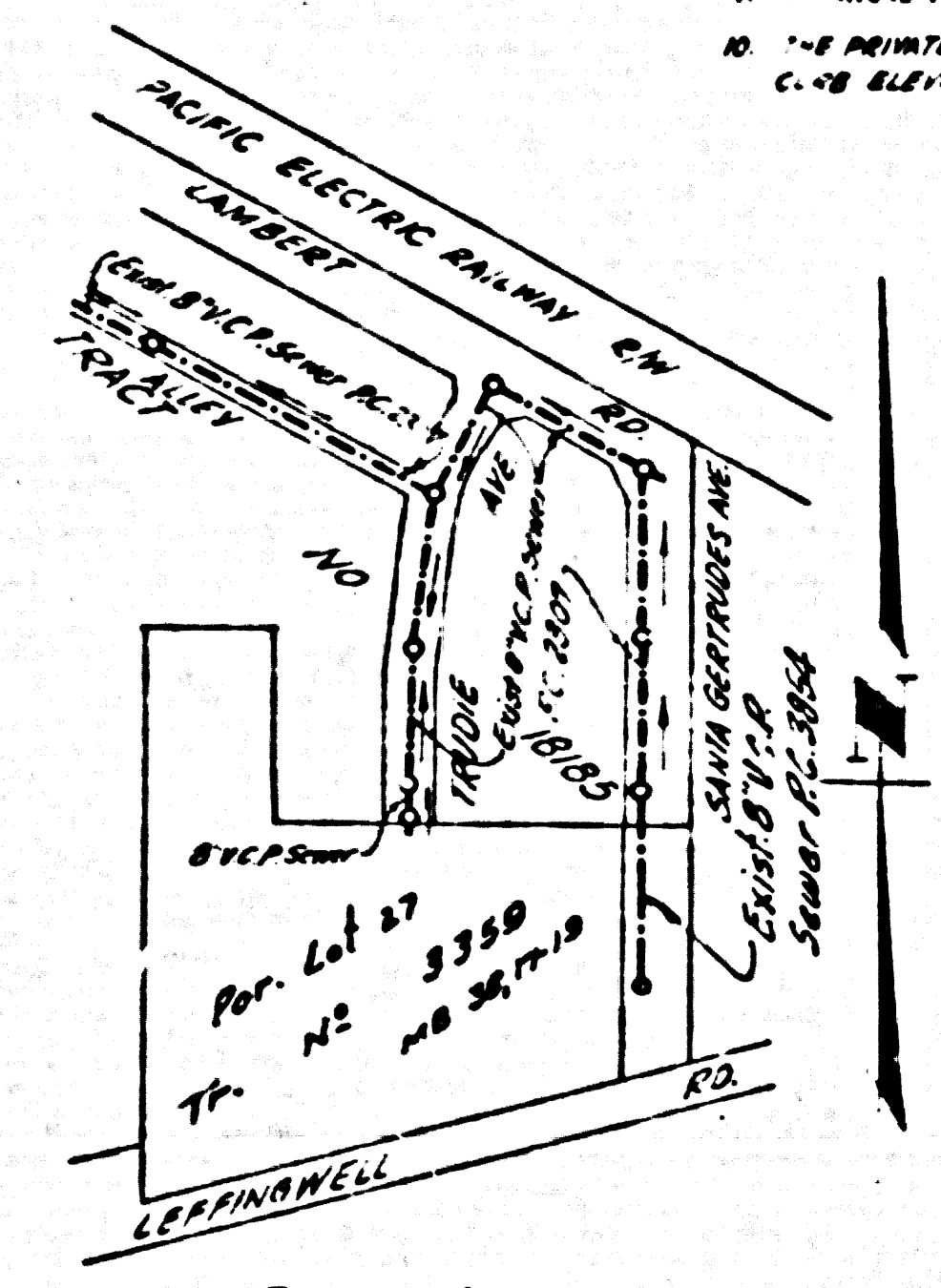


WHITTIER BLDG. DIST. NO. 11

- NOTES**
- PROVIDE STAKES ON THE PROPERTY LINE OR PROPERTY LINES PRODUCED AT RIGHT ANGLES TO THE SEWER LINE AT THE CENTER LINE OF EACH MANHOLE.
 - NO REPRESENTATIVE OF THE COUNTY ENGINEER WILL SURVEY OR LAYOUT ANY PORTION OF THE WORK.
 - THE OWNER OR HIS AUTHORIZED REPRESENTATIVE SHALL FURNISH THE COUNTY ENGINEER WITH GRADE SHEETS AND STATIONING FOR ALL HOUSE LATERALS AND BRANCHES AND SHALL PROVIDE STAKES FOR THEM AT THEIR PROPER LOCATIONS WITH STATIONING PLAINLY MARKED. ANY CHANGE IN LOCATION SHALL BE REQUESTED IN WRITING BY THE OWNER OR HIS REPRESENTATIVE.
 - NO REVISIONS SHALL BE MADE IN THESE PLANS WITHOUT THE APPROVAL OF THE COUNTY ENGINEER.
 - USE STANDARD MANHOLE FRAMES AND COVERS, S.A. 117, EXCEPT AS NOTED.
 - USE STANDARD STRENGTH PIPE EXCEPT AS NOTED.
 - USE CHIMNEY MORTAR, "WIND-TIGHT" OR "SPREAD-SEAL" FOR ALL VENTED CLAY PIPE JOINTS, PER SPEC. SEC. 308.4-B.
 - ASSURE ALL TRENCH WITHIN PAVED AREA TO MEET L.A. COUNTY ROAD DEPT., OR CALIF. STATE HIGHWAY DEPT. REQUIREMENTS IN ACCORDANCE WITH PERMITS.
 - EMCA'S FOUR FEET OF SEWER AT POINTS OF INTERFERENCE WITH POLES, S.A. 176, CASE III.
 - EMCA'S FOUR FEET OF SEWER AT POINTS OF INTERFERENCE WITH POLES, S.A. 176, CASE III.
 - ALL STRUCTURES SHALL BE BRICK SEWER STRUCTURES, S.A. 176, EXCEPT AS NOTED.
 - PC-4 ALL-WAYE BRIDGE TEST USE FORMULA NO. 1, SPEC. SEC. 67.
 - MANHOLE TOPS IN UNIMPROVED RIGHTS-OF-WAY TO BE 6" ABOVE FINISHED GRADE.
 - THE PRIVATE ENGINEER IS TO FURNISH THE HOUSE LATERAL DEPTH AT THE PROPERTY LINE BELOW THE TOP OF C-18 ELEVATION FOR EACH HOUSE LATERAL ON THE GRADE SHEET.



B.M. 513464 INDEX CO. SUR. B.M. 4-1
 L.A. CO. SURV. MON. 40' S.W. OF S.W.
 RAIL OF U.P.R.R. 10' S.O. OF B.
 LEFFINGWELL RD. (BASE LINE) ELEV.
 253.916 (1955)

NO CHARGE FOR CONNECTIONS
 L. W. HUGHES
 8-15-58

PROFILE ALIGNMENT AND GRADE OF SANITARY SEWERS TO BE CONSTRUCTED IN

P.C. 4794 PAGE 1
 TRUDIE AVE.
 PRIVATE CONTRACT NO. 4794

W.S. 54
 1 SHEET, 1 PAGE
 SCALE: VERT. 1"=4' HORIZ. 1"=40' MAY, 1958
 PREPARED IN THE OFFICES OF

KEMMERER ENGINEERING CO., INC.
 BY: Hans C. Hansen
 REG. C. E. NO. 4722

FOR LEGEND SEE PLAN NO. S-A-64

NOTE:
 GRADES TO WHICH THIS IMPROVEMENT IS TO BE CONSTRUCTED ARE SHOWN ON PLANS AND PROFILES. GRADE POINTS ARE TOP OF CURBS, CENTER LINE OF STREETS, OR CENTER LINE OF ALLEYS, AS SHOWN BY CIRCLES ON PROFILES. AT ALL POINTS BETWEEN DESIGNATED POINTS, THE GRADE SHALL BE ESTABLISHED SO AS TO CONFORM TO A STRAIGHT LINE DRAWN BETWEEN SAID DESIGNATED POINTS.
 ELEVATIONS ARE IN FEET ABOVE U.S.C.A. 82 SEA LEVEL DATUM OF 1929.
 THIS DRAWING AND THE DATA HEREON ARE HEREBY MADE A PART OF THE SPECIFICATIONS.
 WORK SHALL BE CONSTRUCTED ACCORDING TO SPECIFICATIONS ON FILE IN THE OFFICE OF THE COUNTY ENGINEER AND SHALL BE PROSECUTED ONLY IN THE PRESENCE OF THE COUNTY ENGINEER.
 BEFORE WORK CAN BE STARTED, THE CONTRACTOR MUST OBTAIN A PERMIT TO EXCAVATE IN COUNTY STREETS AND SHALL BE RESPONSIBLE FOR THE PROTECTION OF ALL UTILITIES AND STRUCTURES UNDER THE STREETS AND SHALL BE RESPONSIBLE FOR THE COST OF CONSTRUCTION PROTECTION AND REPAIRS.
 APPROVAL OF THIS PLAN BY THE COUNTY OF LOS ANGELES DOES NOT CONSTITUTE A REPRESENTATION AS TO THE ACCURACY OF THE LOCATION OF OR THE EXISTENCE OR NON-EXISTENCE OF ANY UNDERGROUND UTILITIES, PIPES, OR STRUCTURES WITHIN THE LIMITS OF THIS PROJECT. THIS NOTE APPLIES TO ALL PAGES.
 IF WORK IS TO BE DONE IN A STATE HIGHWAY, A PERMIT MUST BE OBTAINED FROM THE STATE OF CALIFORNIA, DIVISION OF HIGHWAYS, 126 SOUTH SPRING STREET.

COUNTY OF LOS ANGELES, CALIFORNIA
 APPROVED, JOHN A. LAMBE, COUNTY ENGINEER
 APPROVED, A. M. RAWN, CHIEF ENGINEER
 BY: L. W. Hughes, SANITATION ENGINEER
 BY: Hans C. Hansen, OFFICE ENGINEER
 CHECKED BY: R. K. Onda, 8-18-58
 OFFICE OF COUNTY ENGINEER, 820 C. E. NO. 9406