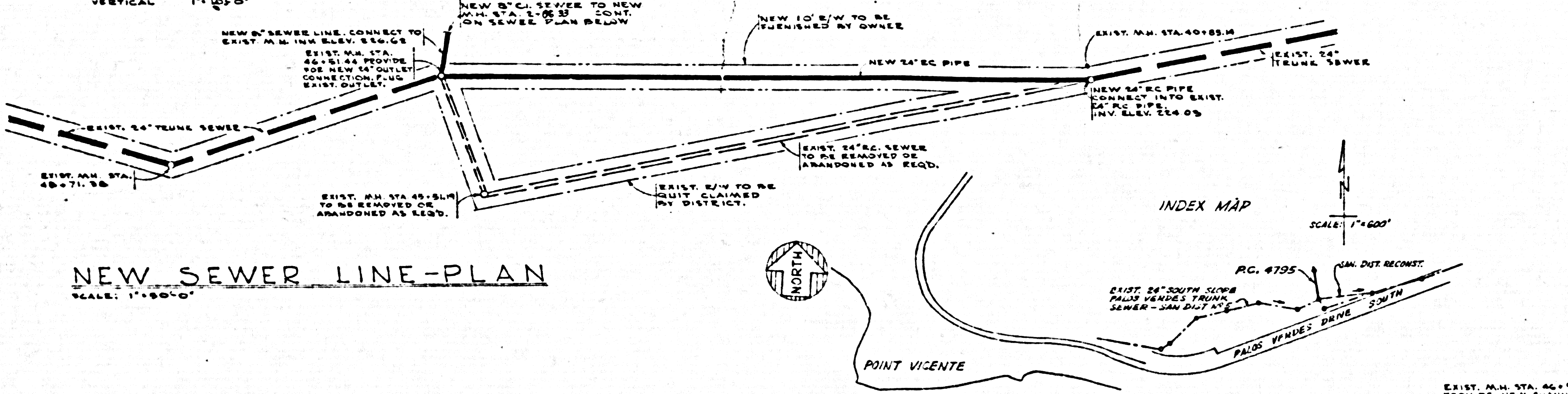
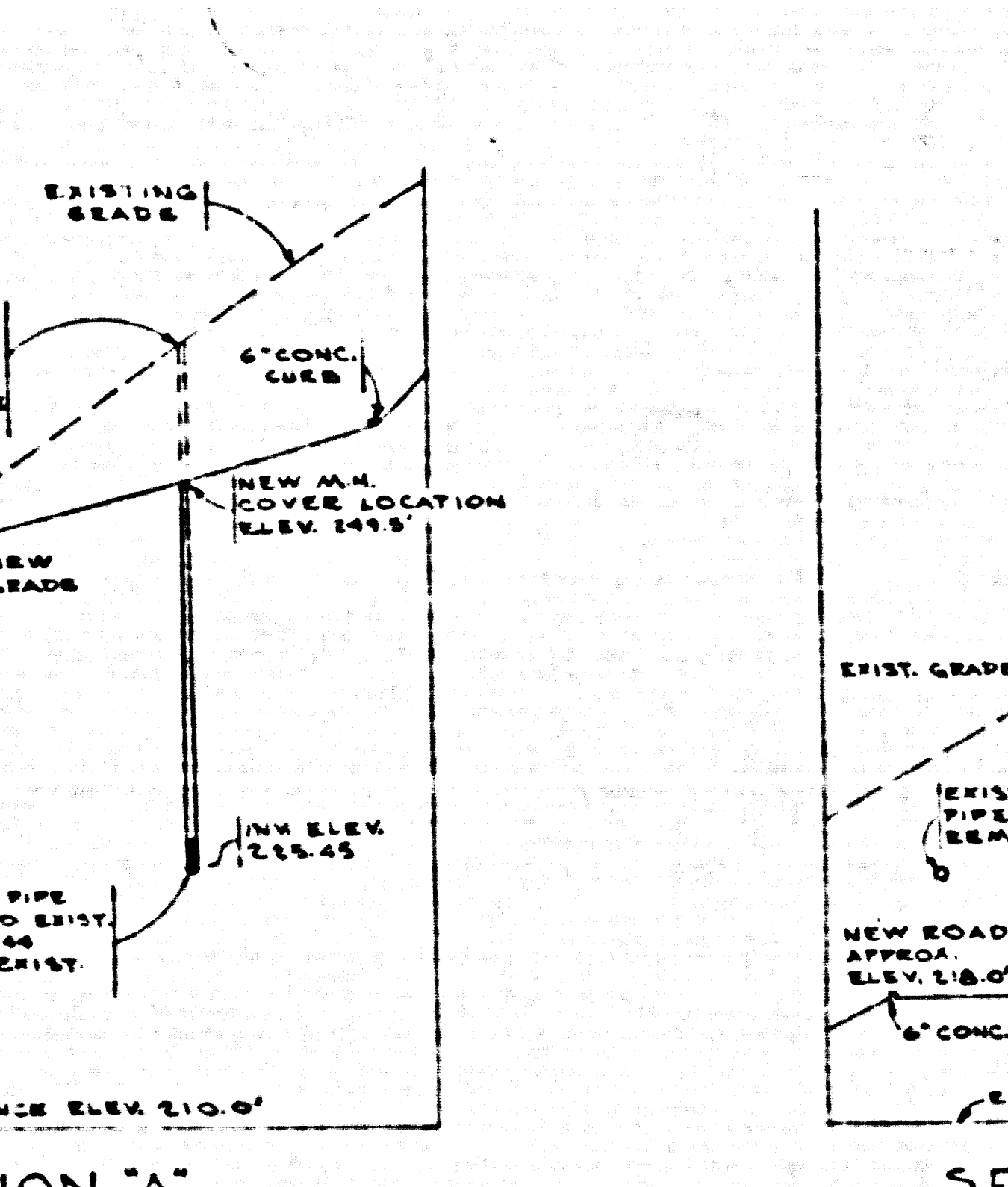


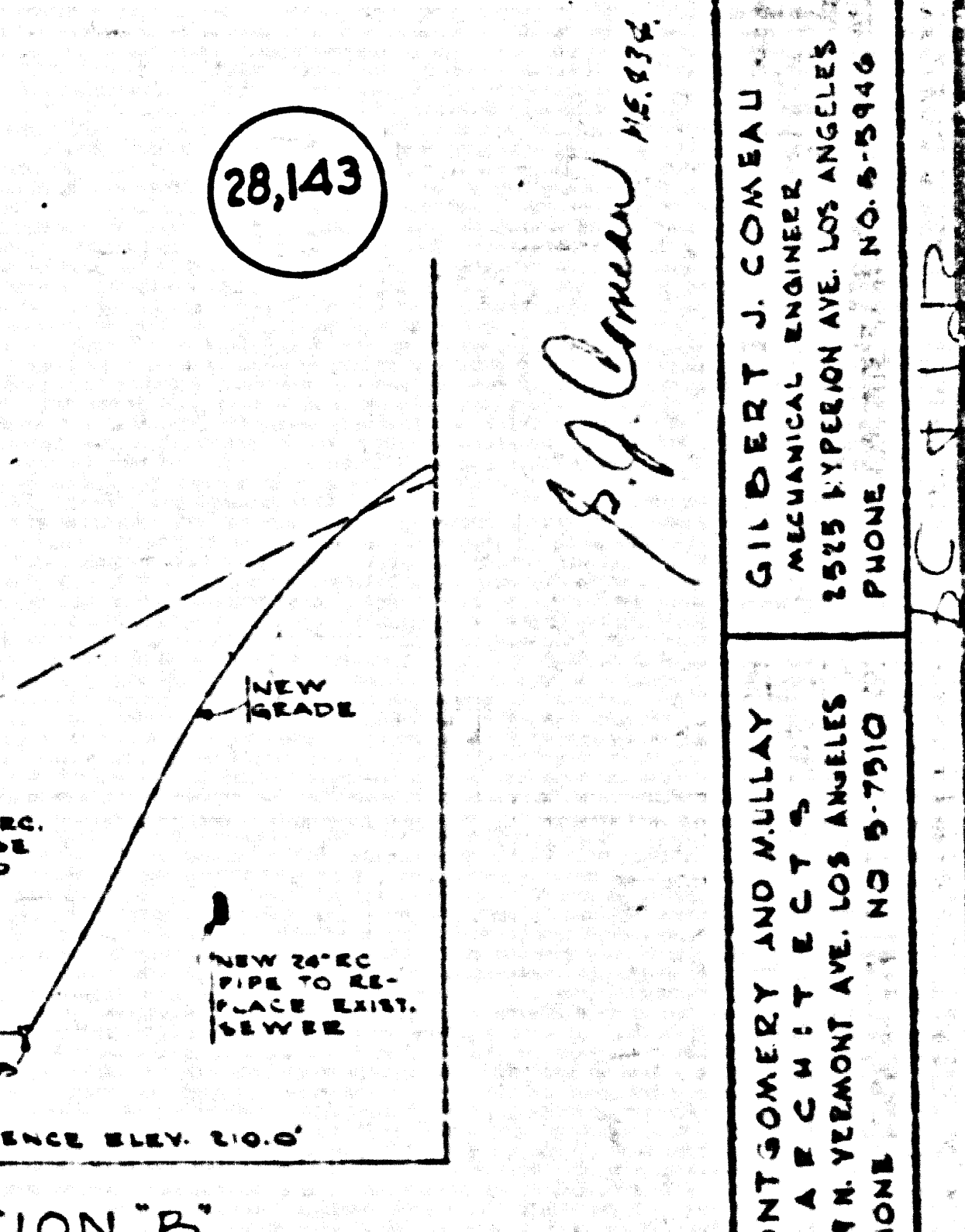
NEW SEWER LINE - PROFILE  
SCALE: HORIZONTAL 1\"/>



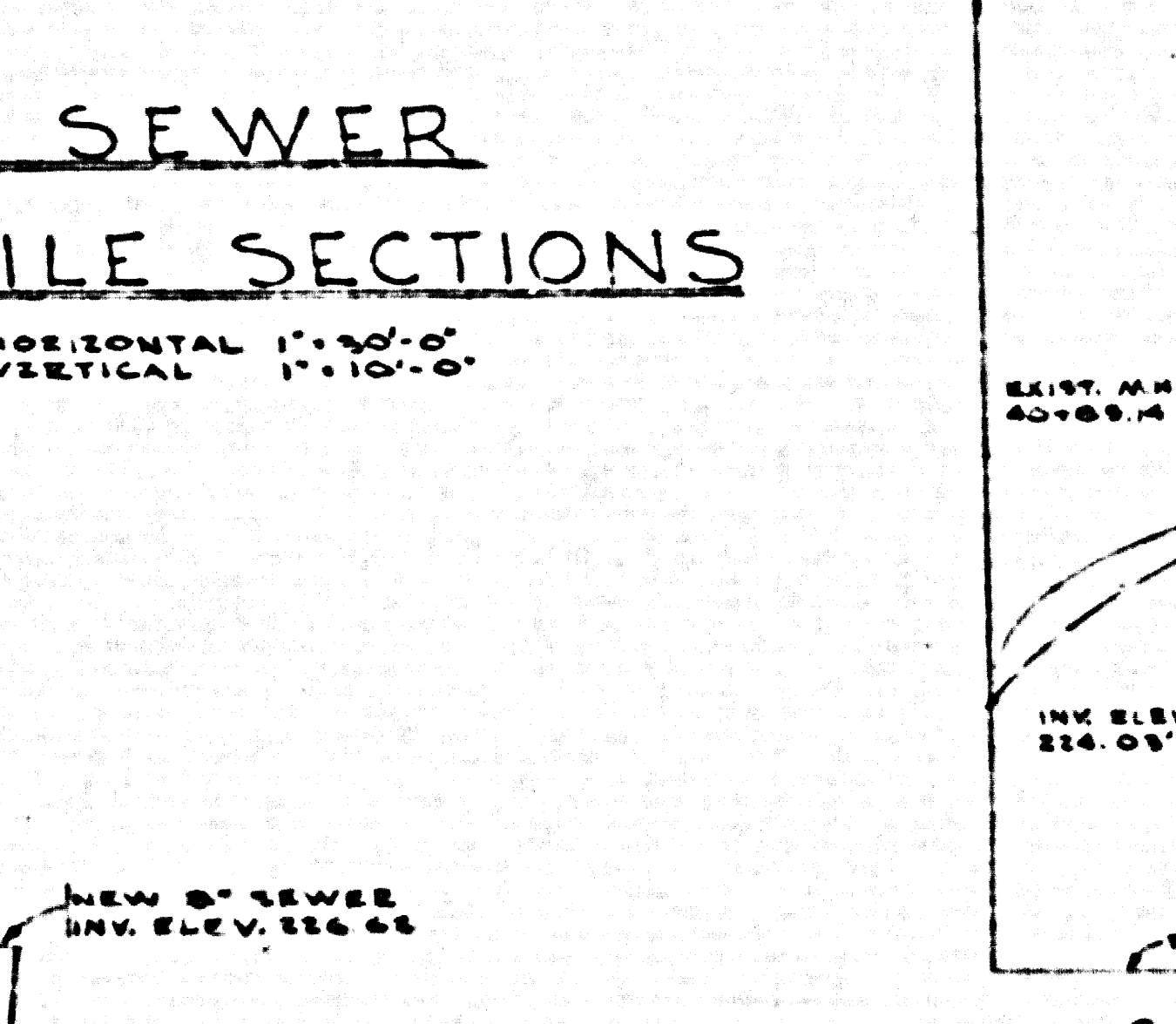
NEW SEWER LINE - PLAN  
SCALE: 1\"/>



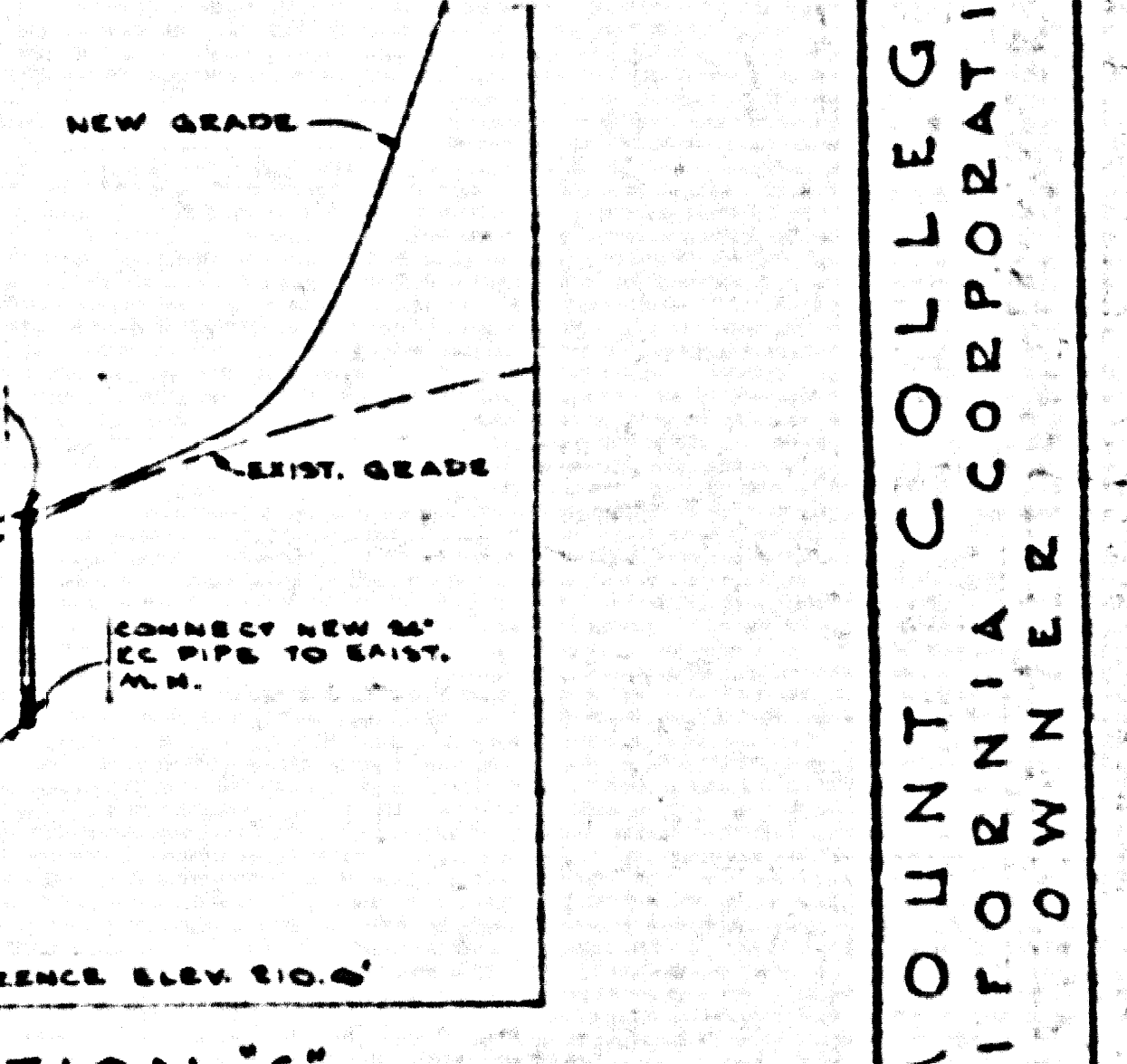
SECTION A



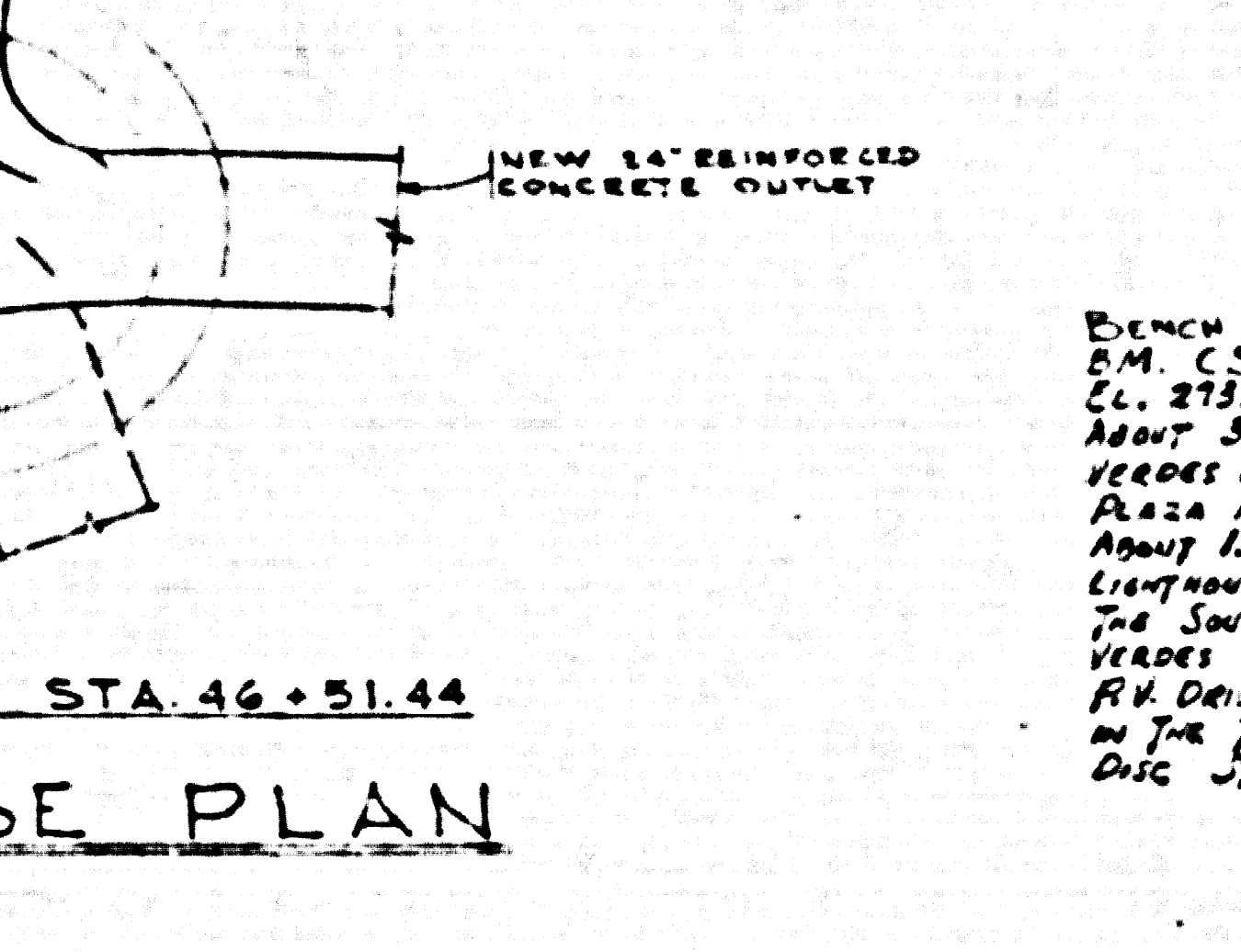
SECTION B



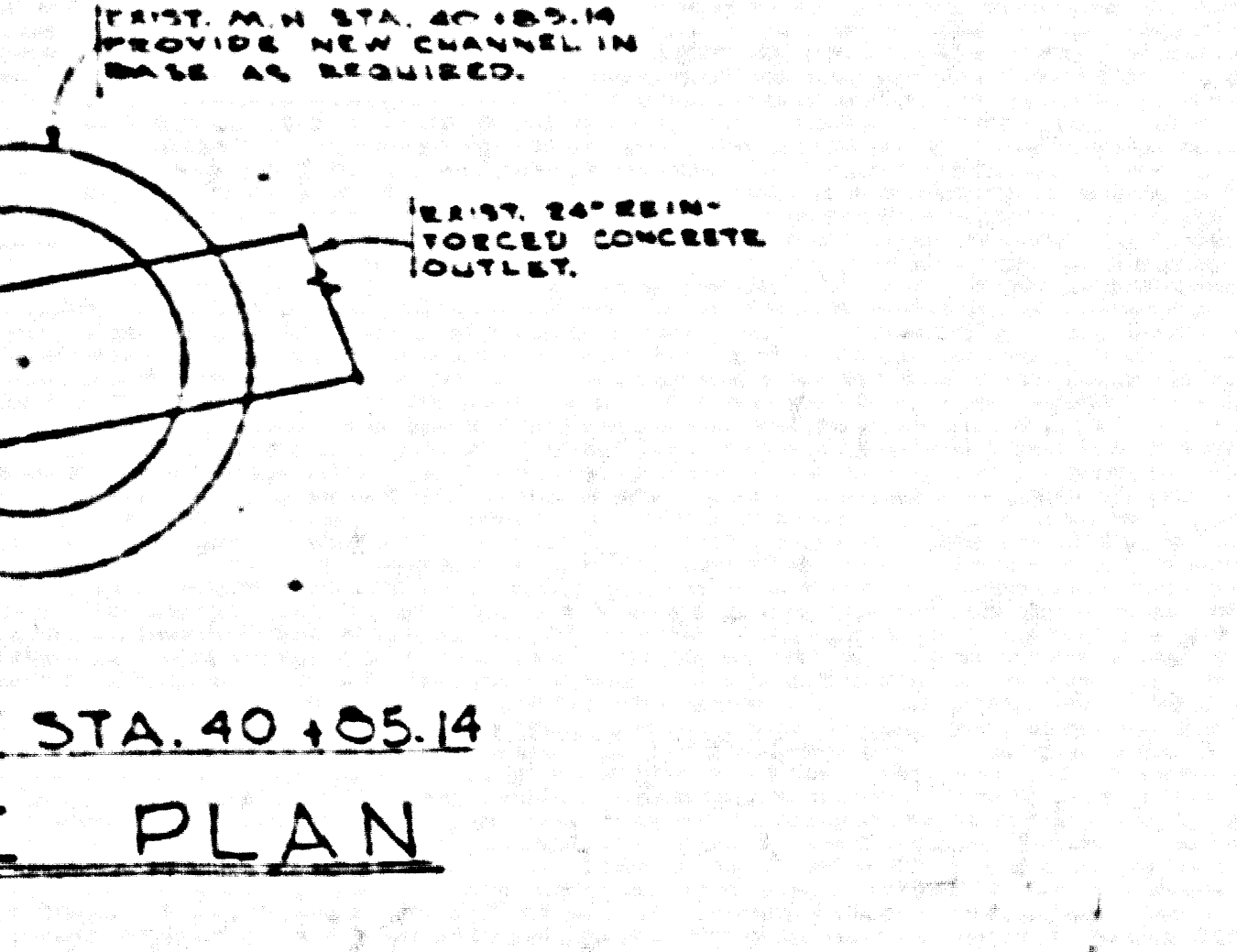
NEW SEWER PROFILE SECTIONS  
SCALE: HORIZONTAL 1\"/>



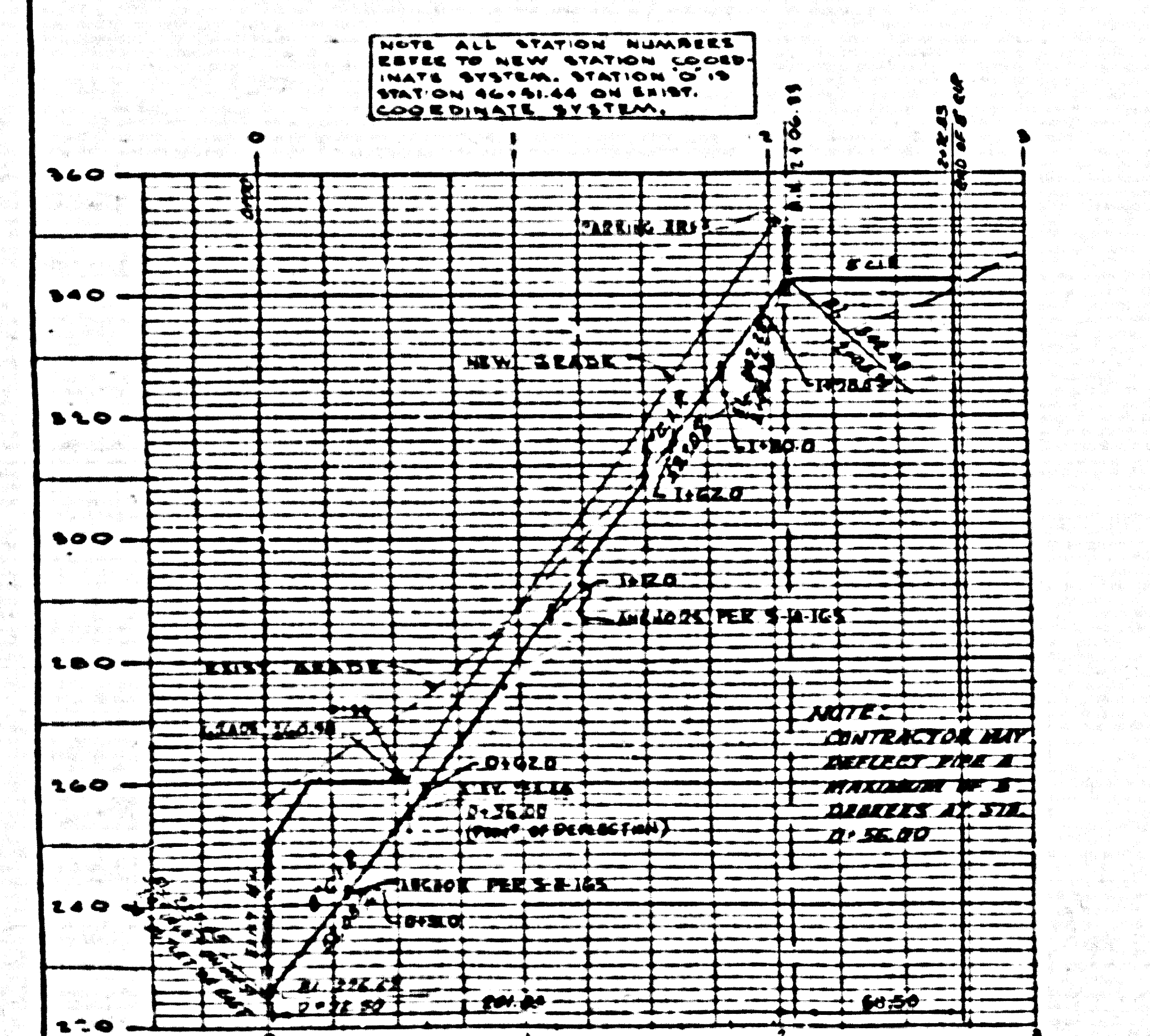
SECTION C



EXISTING MANHOLE STA. 46+51.44  
CHANNEL BASE PLAN  
SCALE: 3/8\"/>



EXISTING MANHOLE STA. 40+51.14  
CHANNEL BASE PLAN  
SCALE: 3/8\"/>



NEW SEWER LINE - PROFILE  
SCALE: HORIZONTAL 1\"/>

**NOTE:** ALL STATION NUMBERS REFER TO EXIST. STATION COORDINATE SYSTEM.

**NOTE:** ELEVATIONS ARE IN FEET ABOVE U.S.C. & G.S. SEA LEVEL DATUM OF 1929.

This Drawing and the data hereon are hereby made a part of the specifications.

Work shall be constructed according to specifications on file in the office of the County Engineer and shall be prosecuted only in the presence of the County Engineer.

Before work can be started, the contractor must obtain a permit to excavate in County streets from the County Public Works Department, 5530 Wilshire Blvd., L.A., and a permit to cover construction in public and record plans from the County Engineer, Room 334, 213 South Broadway.

If work is to be done in a state highway, a permit must be obtained from the State of California, Division of Highways, 120 South Spring Street.

Approval of this plan by the County of Los Angeles does not constitute a representation as to the accuracy of the stationing, or the existence or non-existence of, any underground utility, pipe, or structure within the limits of this project.

- NOTE:** No representative of the County Engineer will survey or locate any portion of the work.
- All revisions shall be made in these plans without approval of the County Engineer.
1. Use standard manhole frames and covers, 36\"/>

**NOTE:** THE CONTRACTOR SHALL NOTIFY THE CONSTRUCTION AND CITY ENGINEER DIVISION BY TELEPHONE NUMBER 9-4747, EXT. 342, AT LEAST 24 HOURS BEFORE STARTING ANY WORK UNDER THIS CONTRACT.

REVISION: CHANGED GRADES & LOCATION OF MANHOLE

REVISION APPROVED: \_\_\_\_\_

**SPECIFICATIONS**

1. ALL SEWER TO BE INSPECTED AND APPROVED BY THE COUNTY ENGINEER.
2. ALL WORK OF RELOCATION OF 24\"/>

(PRIVATE SEWER)  
PRIVATE CONTRACT No. 4795  
LOMITA BLDG DIST. No. 7.1  
W.S. 27 - Range Guide - 82 s. 9\"/>

COUNTY OF LOS ANGELES, CALIFORNIA  
APPROVED, JOHN A. LAMME, County Engineer  
By \_\_\_\_\_  
APPROVED, A. M. BAWN, Chief Engineer  
By \_\_\_\_\_  
Checked \_\_\_\_\_  
Office of County Engineer  
Office of County Engineer Bop. C. E. No. 2459

**NOTE:** THE ABOVE APPROVAL BY THE COUNTY ENGINEER APPLIES TO THE 24\"/>

**SANITARY SEWER LINE PLAN**

28,143

S.P. Cramer 11-11-34

GILBERT J. COMEAU  
MECHANICAL ENGINEER  
1515 HYPERION AVE. LOS ANGELES  
PHONE NO. 4-5446

MONTGOMERY AND MULLAY  
P. O. BOX 111  
LOS ANGELES  
PHONE NO. 5-7510

MARY MOUNT COLLEGE  
A. CALIFORNIA CORPORATION  
LOS ANGELES

28,144

REVISION: CHANGED GRADES & LOCATION OF MANHOLE

REVISION APPROVED: \_\_\_\_\_

APPROVED:  
COUNTY SANITATION DISTRICTS  
A.M. BAWN, CHIEF ENGINEER & GEN. MGR  
By \_\_\_\_\_  
OFFICE ENGINEER

**NOTE:** SANITATION DISTRICTS' APPROVAL SUBJECT TO OWNER FURNISHING NEW EXHIBIT FEES OF CHARGE TO SANITATION DISTRICT.

DATE: \_\_\_\_\_

SHEET: 12

P.C. 4795