

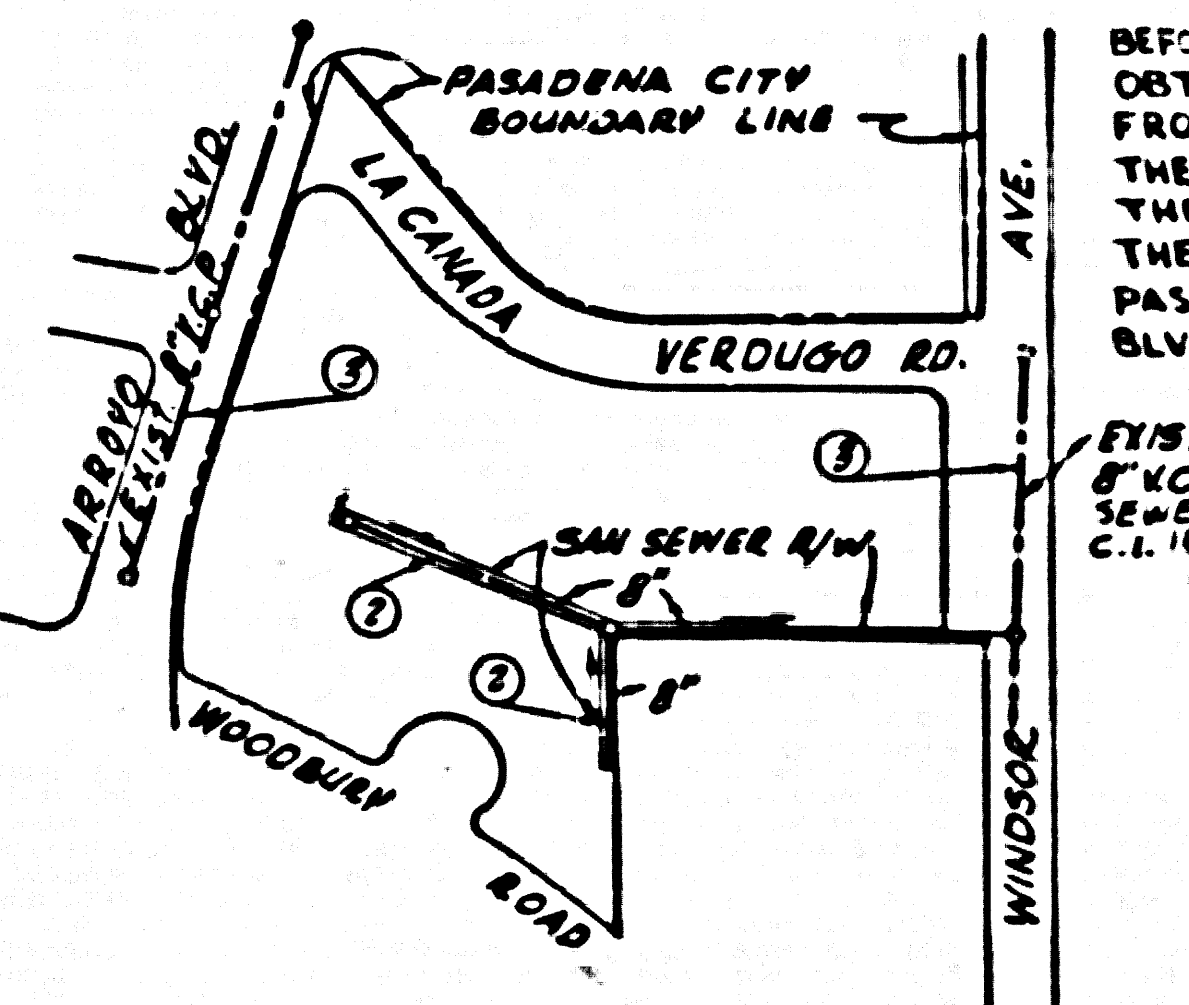
BENCH MARK. 4" Brass tablet inscribed "L.A. COUNTY SURVEY CONTROL SYSTEM TRAVERSE STA. ALTADENA E-2" R.E. 2177 set in concrete, 2" below subgrade of street, Lincoln Ave. & Figueroa Drive @ Int. L.A. Co. Engr. Office B.M. 24-18 Elev. 1133.500, F.S. 1387, Pg. 22

INDEX TABLE	
SHEETS	PAGES
2	3

CONNECTION CHARGES AS INDICATED
-3/4" Scale

ALTADENA BLDG. DIST. NO. 3

- NOTES
- PROVIDE STAKES ON THE PROPERTY LINE OR PROPERTY LINES PRODUCED AT RIGHT ANGLES TO THE SEWER LINE AT THE CORNER LINE OF EACH PARCEL.
 - NO REPRESENTATIVE OF THE COUNTY ENGINEER WILL SURVEY OR LAYOUT ANY PORTION OF THE WORK.
 - THE OWNER OR HIS APPROVED REPRESENTATIVE SHALL FURNISH THE COUNTY ENGINEER WITH GRADE SHEETS AND STATION FOR ALL HOUSE LATERALS AND T BRANCHES AND SHALL PROVIDE STAKES FOR THEM AT THEIR PROPER LOCATIONS WITH STATIONING PLAINLY MARKED. ANY CHANGE IN LOCATION SHALL BE REQUESTED IN WRITING BY THE OWNER OR HIS REPRESENTATIVE.
 - NO REVISIONS SHALL BE MADE IN THESE PLANS WITHOUT THE APPROVAL OF THE COUNTY ENGINEER.
 - USE STANDARD MANHOLE FRAMES AND COVERS, S.A.-117, EXCEPT AS NOTED.
 - USE STANDARD STRENGTH PIPE EXCEPT AS NOTED.
 - USE CEMENT MORTAR OR "WEDGEM-LOCK" OR "SPEECL-SEAL" FOR ALL V.C.R. JOINTS PER SPEC'S. SEC'S 84 & 84B.
 - BRUSHBACK ALL TRENCH WITHIN PAVED AREA TO MEET L.A. COUNTY ROAD DEPT., OR CALIF. STATE HIGHWAY DEPT. SPECIFICATIONS IN ACCORDANCE WITH PERMITS.
 - ENCASE FOUR FEET OF SEWER AT POINTS OF INTERFERENCE WITH POLES, CABLES, ETC., S.A.-6-172.
 - HOUSE LATERALS TO BE CONSTRUCTED WITH INVERTS AT PROPERTY LINE, 12" BELOW CURB GRADE EXCEPT AS NOTED.
 - ALL STRUCTURES SHALL BE BRICK SEWER STRUCTURES, S.A.-104, EXCEPT AS NOTED.
 - FOR ALLOWABLE LEAKAGE TEST USE FORMULA NO. 1, SPEC'S. SEC. 84.
 - MANHOLE TOPS IN UNIMPROVED RIGHTS-OF-WAY TO BE 6" ABOVE FINISHED GRADE.
 - THE PRIVATE ENGINEER SHALL FURNISH THE MOST LATERAL DEPTH AT THE PROPERTY LINE BELOW THE ELEVATION OF TOP-OF-CURB OR 4'-0" R/W FOR EACH HOUSE LATERAL ON THIS GRADE SHEET.
 - THE CONTRACTOR SHALL NOTIFY THE CONSTRUCTION & STORM DRAIN DIVISION BY TELEPHONE, MADISON 84747, EXT. 262, AT LEAST 24 HRS. BEFORE STARTING ANY WORK UNDER THIS CONTRACT.



INDEX MAP
SCALE: 1" = 200'
TRACT No. 24360
P.C. 4809

PROFILE ALIGNMENT AND GRADE OF
SANITARY SEWERS PAGE 1
TRACT No. 24360 (26401)

PRIVATE CONTRACT NO. 4809
W.S. 30
2 SHEETS, 3 PAGES
SCALE: VERT. 1" = 4'
HORIZ. 1" = 40'
JUNE, 1958
PREPARED IN THE OFFICES OF
DAVID P. MILLER AND COMPANY
By David P. Miller
REG. C. E. NO. 2233
FOR LEGEND SEE PLAN NO. S-A-64

NOTES

GRADES TO WHICH THIS IMPROVEMENT IS TO BE CONSTRUCTED ARE SHOWN ON PLANS AND PROFILES. GRADE POINTS FOR TOP OF CURB, CENTER LINE OF STREET, OR CENTER LINE OF ALLEYS ARE SHOWN BY CIRCLES ON PROFILES. AT ALL POINTS BETWEEN DESIGNATED POINTS THE GRADE SHALL BE ESTABLISHED SO AS TO CONFORM TO A STRAIGHT LINE DRAWN BETWEEN SAID DESIGNATED POINTS.

ELEVATIONS ARE IN FEET ABOVE U.S.C. & G.S. SEA LEVEL DATUM OF 1929.

THIS DRAWING AND THE DATA HEREON ARE HEREBY MADE A PART OF THE SPECIFICATIONS.

BEFORE WORK CAN BE STARTED, THE CONTRACTOR MUST OBTAIN A PERMIT TO EXCAVATE IN THE COUNTY ENGINEER'S AND SHALL BE PROSECUTED ONLY IN THE PRESENCE OF THE COUNTY ENGINEER.

BEFORE WORK CAN BE STARTED, THE CONTRACTOR MUST OBTAIN A PERMIT TO EXCAVATE IN THE COUNTY ENGINEER'S AND SHALL BE PROSECUTED ONLY IN THE PRESENCE OF THE COUNTY ENGINEER.

BEFORE WORK CAN BE STARTED, THE CONTRACTOR MUST OBTAIN A PERMIT TO EXCAVATE IN THE COUNTY ENGINEER'S AND SHALL BE PROSECUTED ONLY IN THE PRESENCE OF THE COUNTY ENGINEER.

APPROVAL OF THIS PLAN BY THE COUNTY OF LOS ANGELES DOES NOT CONSTITUTE A REPRESENTATION AS TO THE ACCURACY OF THE LOCATION OF OR THE EXISTENCE OR NON-EXISTENCE OF ANY UNDERGROUND UTILITY PIPE, OR STRUCTURE WITHIN THE LIMITS OF THIS PROJECT. THIS NOTE APPLIES TO ALL PAGES.

IF WORK IS TO BE DONE IN A STATE HIGHWAY, A PERMIT MUST BE OBTAINED FROM THE STATE OF CALIFORNIA, DIVISION OF HIGHWAYS, 120 SOUTH SPRING STREET.

COUNTY OF LOS ANGELES, CALIFORNIA

APPROVED, JOHN A. LAMBE, COUNTY ENGINEER
DO. SAN. DIST. NO. 17

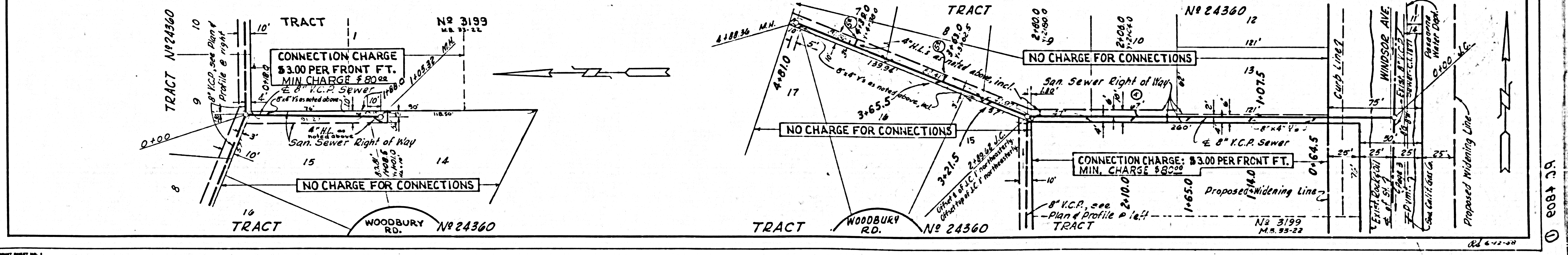
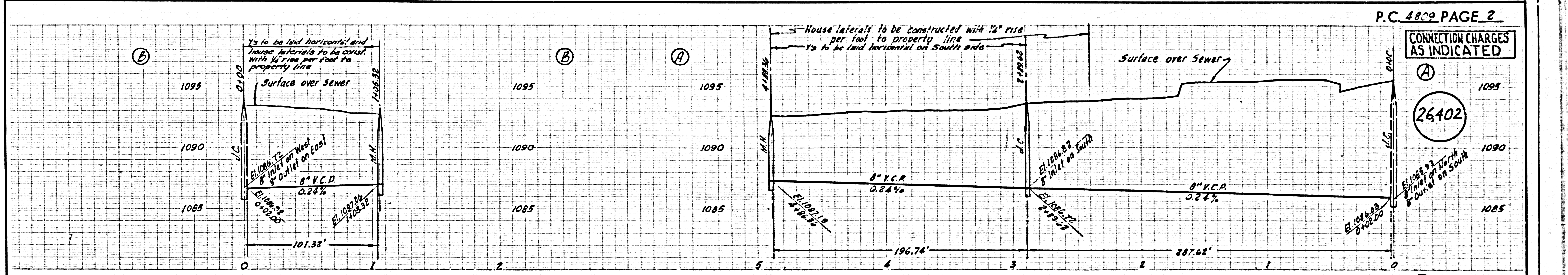
APPROVED, A. M. RAWN, CHIEF ENGINEER
DO. SAN. DIST. NO. 17

BY [Signature] SANITATION ENGINEER
BY [Signature] OFFICE ENGINEER

CHECKED BY [Signature]
OFFICE OF COUNTY ENGINEER, REG. C. E. NO. 2935

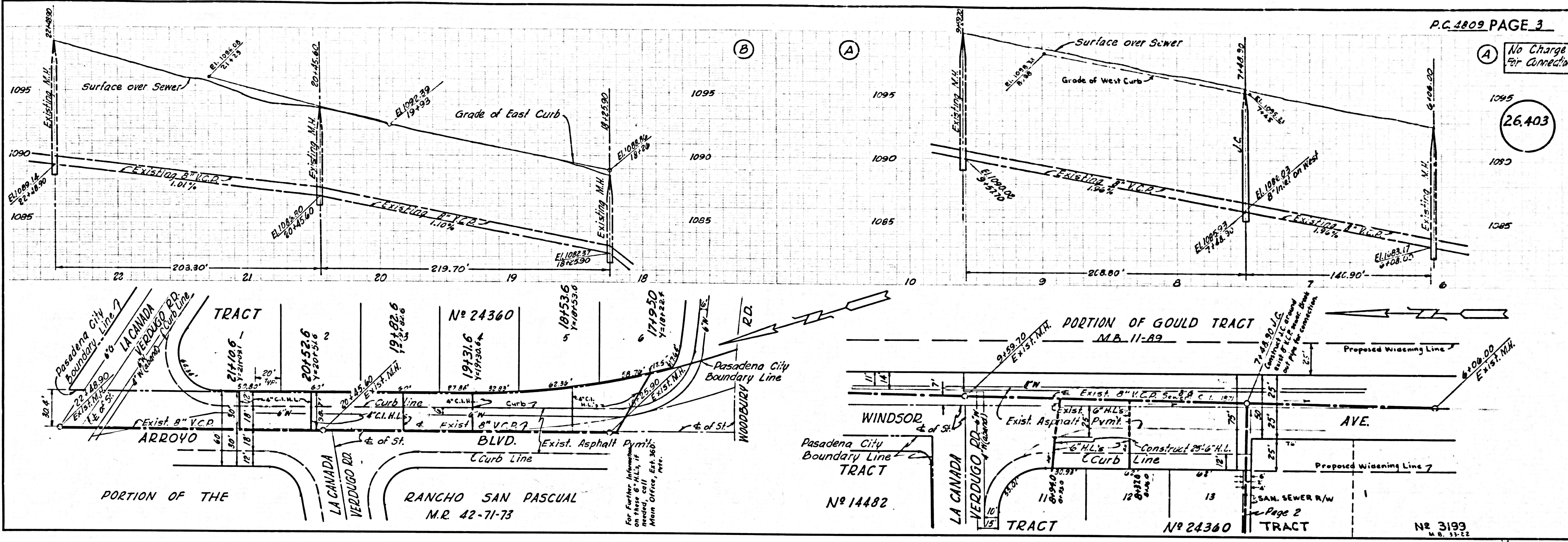
CITY OF PASADENA, CALIFORNIA
DESIGN APPROVED: [Signature]
OFFICE ENGINEER

APPROVED BY: [Signature] July 7, 1958.
CITY ENGINEER OF STREETS



(A) No Charge For Connection

26.403



Inspected by City of Pasadena

F.C. 4303

PAGE