

LOMITA BLDG. DIST. NO. 71

PROFILE ALIGNMENT AND GRADE OF P.C. 4816
 SANITARY SEWERS PAGE 1
 TO BE CONSTRUCTED IN

TRACT NO. 24437 (27,746)

PRIVATE CONTRACT NO. 4816

W.S. 28

1 SHEET 2 PAGES

SCALE: 1" = 40' DECEMBER, 1958

PREPARED IN THE OFFICES OF
 VIC CASE
 1450 ORANGE AVE.
 LONG BEACH, CALIF.

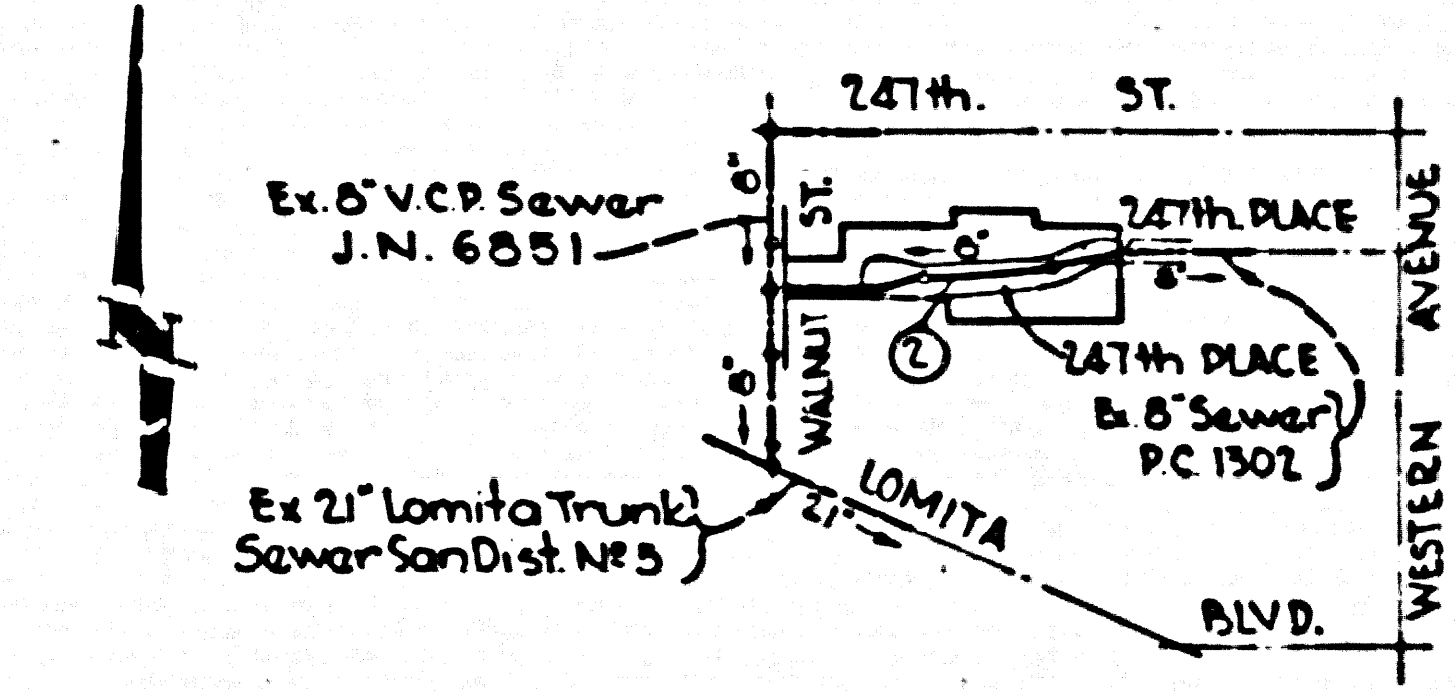
BY: *J. M. ...*
 REG. C. E. NO. 3674

FOR LEGEND SEE PLAN NO. S-A-64

B.M. - 5Y 3512, Elev. 53.436
 Sat L & T, N.E. Cor. of
 conc. wlk. to hse # 1854
 Lomita Blvd. 2' to S. &
 Lomita Blvd. (Garage Quad)

CONNECTION CHARGES
 AS INDICATED
L. Carter 1-23-59

- NOTES
1. PRIVATE STAKES ON THE PROPERTY LINE OR PROPERTY LINES PRODUCED AT RIGHT ANGLES TO THE SEWER LINE AT THE CENTER LINE OF EACH MANHOLE.
 2. NO REPRESENTATIVE OF THE COUNTY ENGINEER WILL SURVEY OR LAY OUT ANY PORTION OF THE WORK.
 3. THE OWNER'S AUTHORIZED REPRESENTATIVE SHALL FURNISH THE COUNTY ENGINEER WITH GRADE SHEETS AND STATIONINGS FOR ALL HOUSE LATERALS AND Y BRANCHES AND SHALL PROVIDE STAKES FOR THEM AT THEIR PROPER LOCATIONS WITH STATIONING PLAINLY MARKED. ANY CHANGE IN LOCATION SHALL BE REQUESTED BY WRITING BY THE OWNER OR HIS REPRESENTATIVE.
 4. THE PRIVATE ENGINEER SHALL FINISH THE HOUSE LATERAL BATH AT THE PROPERTY LINE BELOW THE TOP OF CURB ELEVATION FOR EACH HOUSE LATERAL ON THE GRADE SHEET.
 5. NO REVISIONS SHALL BE MADE IN THESE PLANS WITHOUT THE APPROVAL OF THE COUNTY ENGINEER.
 6. USE STANDARD MANHOLE FRAMES AND COVERS, 6-117, EXCEPT AS NOTED.
 7. USE STANDARD STRENGTH PIPE EXCEPT AS NOTED.
 8. USE JOINT COMPOUND "WEDGE JOINT" OR "SPRIT SEAL" FOR ALL V.C.P. JOINTS PER S.P.C.S. SPEC. 30.16.4.6 IF 6" OR 8" WATER OR 24" ENCOUNTERED. USE METAL FOR 12" (S.S. 3175), "PHONE LOCK" OR "WEDGE SEAL" PIPE JOINTS, S.P.C.S. SPEC. 30.16.4.4 & 6. ACCORDANCE WITH PERMITS.
 9. REINFORCE ALL TRENCH WITHIN PAVED AREA TO MEET L.A. COUNTY ROAD DEPT. OR CALIF. STATE HIGHWAY REQUIREMENTS IN ACCORDANCE WITH PERMITS.
 10. ENCASE FOUR FEET OF SEWER AT POINTS OF INTERFERENCE WITH HOLES, CASE NO. 6-172.
 11. HOUSE LATERALS TO BE CONSTRUCTED WITH INVERTS AT PROPERTY LINE 6" FEET BELOW CURB GRADE EXCEPT AS NOTED.
 12. ALL STRUCTURES SHALL BE BRICK SEWER STRUCTURES, 6-104, EXCEPT AS NOTED.
 13. FOR ALLOWABLE LEAKAGE TEST USE FORMULA NO. 2, S.P.C.S. SPEC. 34.
 14. MANHOLE TOPS IN UNIMPROVED HIGHWAYS TO BE 2" INCHES ABOVE FINISHED GRADE.
 15. THE CONTRACTOR SHALL NOTIFY THE CONSTRUCTION & STORM DRAIN DIVISION BY TELEPHONE, MADISON 6-4740, EXT. 346, AT LEAST TWENTY FOUR HOURS BEFORE STARTING ANY WORK UNDER THIS CONTRACT.
- LOT 1 IS SERVED BY AN EXISTING SEWER CONSTRUCTED UNDER P.C. 1302.



INDEX MAP
 SCALE - 1" = 600'
 TRACT NO. 24437
 P.C. 4816

REVISIONS: M11 shifted west to Sta 6405.45
 122' of main line added
 3 H.L.'s to lot 8 added.

Approved by: *Carl M. ...* 1/12/59
 REG. C. E. NO. 1133

NOTES

GRADES TO WHICH THIS IMPROVEMENT IS TO BE CONSTRUCTED ARE SHOWN ON PLANS AND PROFILES. GRADE POINTS FOR TOP OF CURBS, CENTER LINE OF STREETS, OR CENTER LINE OF ALLEYS ARE SHOWN BY CIRCLES ON PROFILES AT ALL POINTS BETWEEN RESPECTIVE POINTS THE GRADE SHALL BE ESTABLISHED SO AS TO CONFORM TO A STRAIGHT LINE DRAWN BETWEEN SAID DESIGNATED POINTS.

ELEVATIONS ARE IN FEET ABOVE U.S.C. & G.S. SEA LEVEL DATUM OF 1929.

THIS DRAWING AND THE DATA HEREON ARE HEREBY MADE A PART OF THE SPECIFICATIONS.

WORK SHALL BE CONSTRUCTED ACCORDING TO SPECIFICATIONS ON FILE IN THE OFFICE OF THE COUNTY ENGINEER AND SHALL BE PROSECUTED ONLY IN THE PRESENCE OF THE COUNTY ENGINEER.

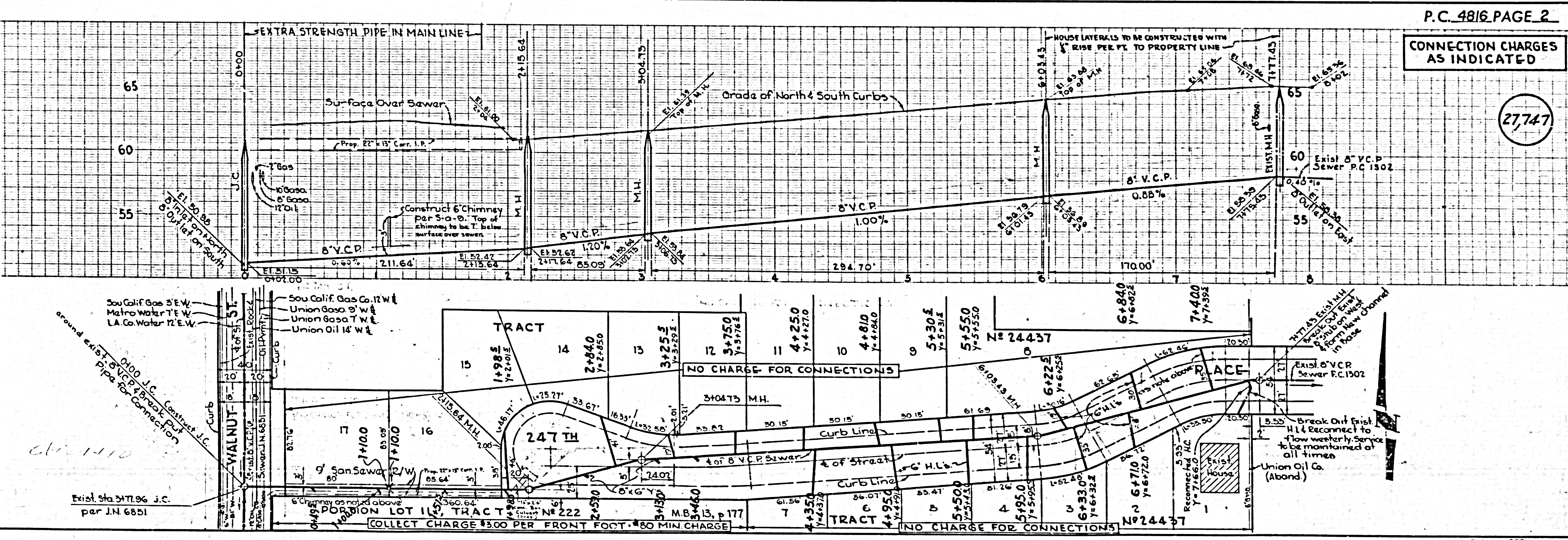
BEFORE WORK CAN BE STARTED, THE CONTRACTOR MUST OBTAIN A PERMIT TO PRECAYE IN COUNTY STREETS FROM THE L.A. COUNTY ROAD DEPT. DISTRICT OFFICE NO. 3. AND MAKE A DEPOSIT WITH THE COUNTY ENGINEER, ROOM 222 FARM ARCADE BUILDING, \$5.00 BROADWAY SUPPLEMENT TO COVER THE COST OF CONSTRUCTION INSPECTION AND RECORD PLANS.

APPROVAL OF THIS PLAN BY THE COUNTY OF LOS ANGELES DOES NOT CONSTITUTE A REPRESENTATION AS TO THE ACCURACY OF THE LOCATION OF OR THE EXISTENCE OR NON-EXISTENCE OF ANY UNDERGROUND UTILITY PIPE, OR STRUCTURE WITHIN THE LIMITS OF THIS PROJECT. THIS NOTE APPLIES TO ALL PAGES.

IF WORK IS TO BE DONE IN A STATE HIGHWAY, A PERMIT MUST BE OBTAINED FROM THE STATE OF CALIFORNIA, DIVISION OF HIGHWAYS, 120 SOUTH SPRING STREET.

COUNTY OF LOS ANGELES, CALIFORNIA

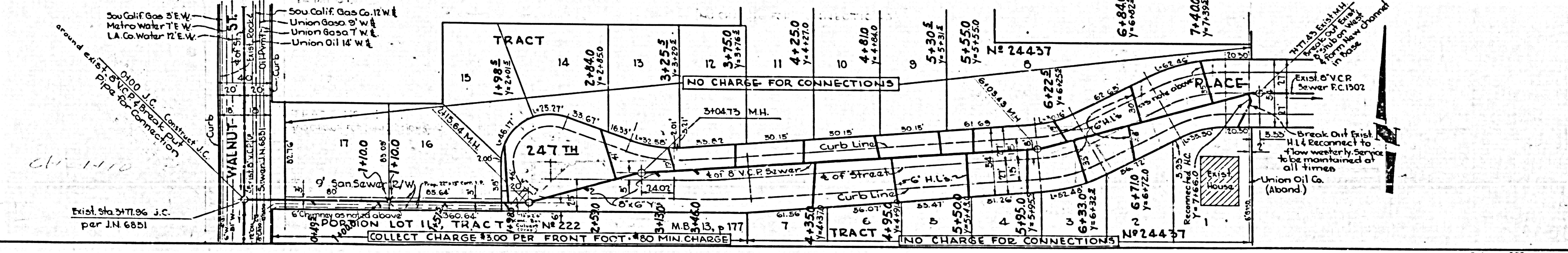
APPROVED, JOHN A. LAMBE, COUNTY ENGINEER
 APPROVED, C. E. COMPTON, CHIEF ENGINEER
 BY: *J. M. ...* BY: *C. E. Compton*
 SANITATION DIVISION OFFICE ENGINEER
 CHECKED BY: *J. M. ...* OFFICE OF COUNTY ENGINEER, REG. C. E. NO. 3674



P.C. 4816 PAGE 2

CONNECTION CHARGES AS INDICATED

(27,747)



P.C. 4816

S.J.C. 1-8-59