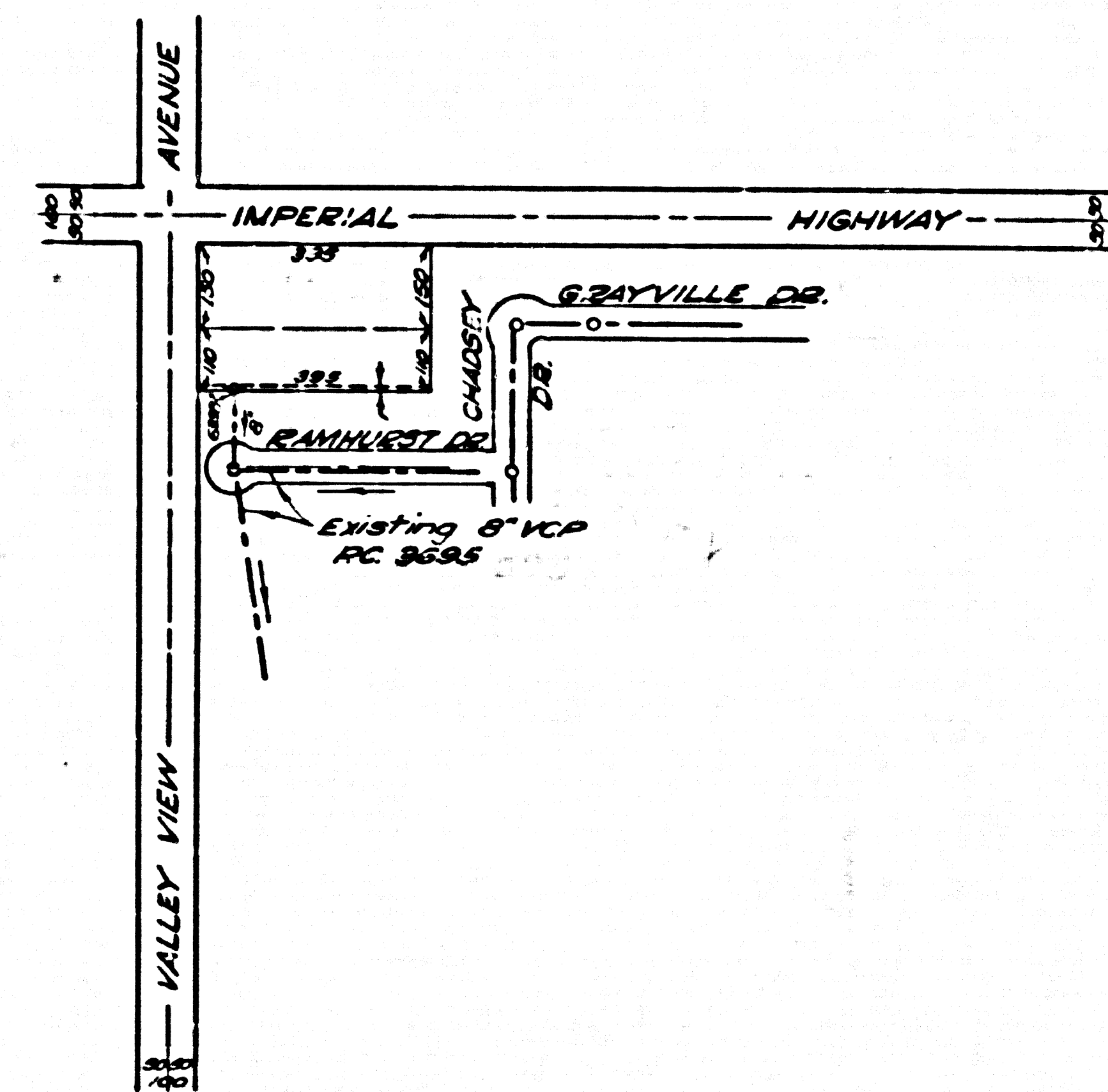


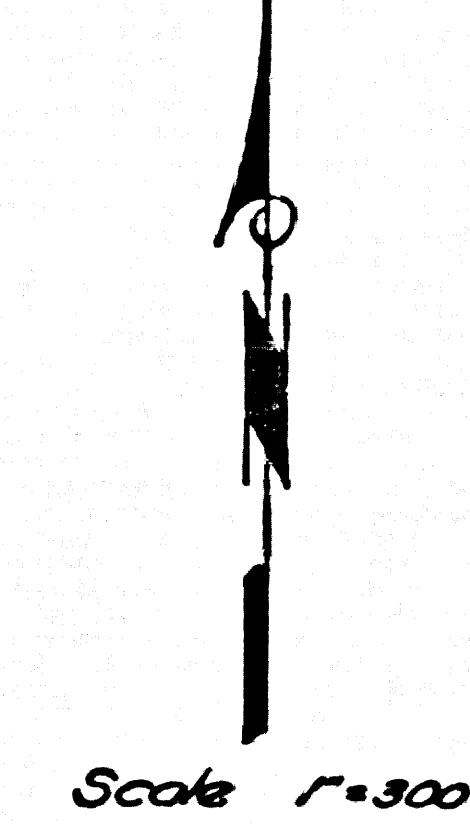
B.M. 1-8 Elev. 159.455
 Brass cap in pavement
 handhole 3.5' W/o E
 Laffingwell Road 10.88
 W/o E Valley View Ave.
 R.B. 1202 Pg. 13



INDEX MAP
 P.C. 4819

NORWALK BLDG. DIST. NO. 4.2

- NOTES
- PROVIDE STAKES ON THE PROPERTY LINE OR PROPERTY LINES PRODUCED AT RIGHT ANGLES TO THE SEWER LINE AT THE CENTER LINE OF EACH MANHOLE.
 - NO REPRESENTATIVE OF THE COUNTY ENGINEER WILL SURVEY OR LAYOUT ANY PORTION OF THE WORK.
 - THE OWNER OR HIS AUTHORIZED REPRESENTATIVE SHALL FURNISH THE COUNTY ENGINEER WITH GRADY SHEETS AND STATION FOR ALL HOUSE LATERALS AND BRANCHES AND SHALL PROVIDE STAKES FOR THESE AT THEIR PROPER LOCATIONS WITH STATION AND PLAINLY SHOWN. ANY CHANGE IN LOCATION SHALL BE REQUESTED IN WRITING BY THE OWNER OR HIS REPRESENTATIVE.
 - NO REVISIONS SHALL BE MADE IN THESE PLANS WITHOUT THE APPROVAL OF THE COUNTY ENGINEER.
 - USE STANDARD MANHOLE FRAMES AND COVERS, S.A-117.
 - USE EXTRA STRENGTH PIPE.
 - USE CEMENT MORTAR "WELDED-LOCK" OR "BREED-SEAL" FOR ALL WITHEPND CLAY PIPE JOINTS PER SPECS. SECS. 302.03 AND 302.04.
 - SPRACE ALL TRENCH WITH FAYED BALL TO MEET L. A. COUNTY ROAD DEPT., OR CALIF. STATE HIGHWAY DEPT. REQUIREMENTS IN ACCORDANCE WITH PERMITS.
 - ENCASE FOUR FEET OF SEWER AT POINTS OF INTERFERENCE WITH POLES, S.A-119.
 - ENCASE MANHOLES TO BE CONSTRUCTED WITHIN DIVISIONS OF PROPERTY LINES PER S.A-119 AND S.A-120.
 - ALL STRUCTURES SHALL BE BRICK SEWER STRUCTURES, S.A-104, EXCEPT AS NOTED.
 - FOR ALLOWABLE LEAKAGE TEST USE FORMULA NO. 1, SPECS., SEC. 304.
 - MANHOLE TOPS IN UNIMPROVED RIGHTS-OF-WAY TO BE 6" ABOVE FINISHED GRADE.
 - THE CONTRACTOR SHALL NOTIFY THE CONSTRUCTION AND STORM DRAIN DIVISION BY TELEPHONE MADISON 34747 EXT. 362 AT LEAST 24 HOURS BEFORE STARTING ANY WORK UNDER THIS CONTRACT.



NO CHARGE FOR CONNECTIONS
 7-23-58

PROFILE ALIGNMENT AND GRADE OF P.C. 4819
 SANITARY SEWERS PAGE 1
 TO BE CONSTRUCTED IN
 SANITARY SEWER R/W
 NORTH OF RAMHURST DRIVE

PRIVATE CONTRACT NO. 4819

W.S. 34

1 SHEET, 2 PAGES

26,127

SCALE: VERT. 1" = 4'
 HORIZ. 1" = 40'

JUNE, 1958

PREPARED IN THE OFFICES OF

CAL ENGINEERS

By Russell G. Ludwig
 REG. C. E. NO. 6883

FOR LEGEND SEE PLAN NO. S-A-64

NOTE: GRADES TO WHICH THIS IMPROVEMENT IS TO BE CONSTRUCTED ARE SHOWN ON PLANS AND PROFILES. GRADE POINTS FOR TOP OF CURB, CENTER LINE OF STREETS, OR CENTER LINE OF ALLEYS ARE SHOWN BY CIRCLES ON PROFILES. AT ALL POINTS BETWEEN DESIGNATED POINTS THE GRADE SHALL BE ESTABLISHED SO AS TO CONFORM TO A STRAIGHT LINE DRAWN BETWEEN SAID DESIGNATED POINTS.

ELEVATIONS ARE IN FEET ABOVE M.D.C. 889 SEA LEVEL DATUM OF 1929.

THIS DRAWING AND THE DATA HEREON ARE HEREBY MADE A PART OF THE SPECIFICATIONS.

WORK SHALL BE CONSTRUCTED ACCORDING TO SPECIFICATIONS ON FILE IN THE OFFICE OF THE COUNTY ENGINEER AND SHALL BE PROSECUTED ONLY IN THE PRESENCE OF THE COUNTY ENGINEER.

BEFORE WORK CAN BE STARTED, THE CONTRACTOR MUST OBTAIN A PERMIT TO EXCAVATE IN COUNTY STREETS FROM THE L. A. COUNTY ROAD DEPT. PERMITS ARE MADE A PART OF THE SPECIFICATIONS.

APPROVAL OF THIS PLAN BY THE COUNTY OF LOS ANGELES DOES NOT CONSTITUTE A REPRESENTATION AS TO THE ACCURACY OF THE LOCATION OR THE EXISTENCE OR NON-EXISTENCE OF ANY UNDERGROUND UTILITY PIPE, OR STRUCTURE WITHIN THE LIMITS OF THIS PROJECT. THE NOTE APPLIES TO ALL PAGES.

IF WORK IS TO BE DONE IN A STATE HIGHWAY, A PERMIT MUST BE OBTAINED FROM THE STATE OF CALIFORNIA, DIVISION OF HIGHWAYS, 138 SOUTH SPRING STREET.

COUNTY OF LOS ANGELES, CALIFORNIA

APPROVED, JOHN A. LAMBE, COUNTY ENGINEER

APPROVED, A. M. RAWIN, CHIEF ENGINEER

By H. L. Snelson, REG. P. SANITATION ENGINEER

By M. J. Williams, OFFICE ENGINEER

CHECKED BY: R. K. Wade, 7-10-58

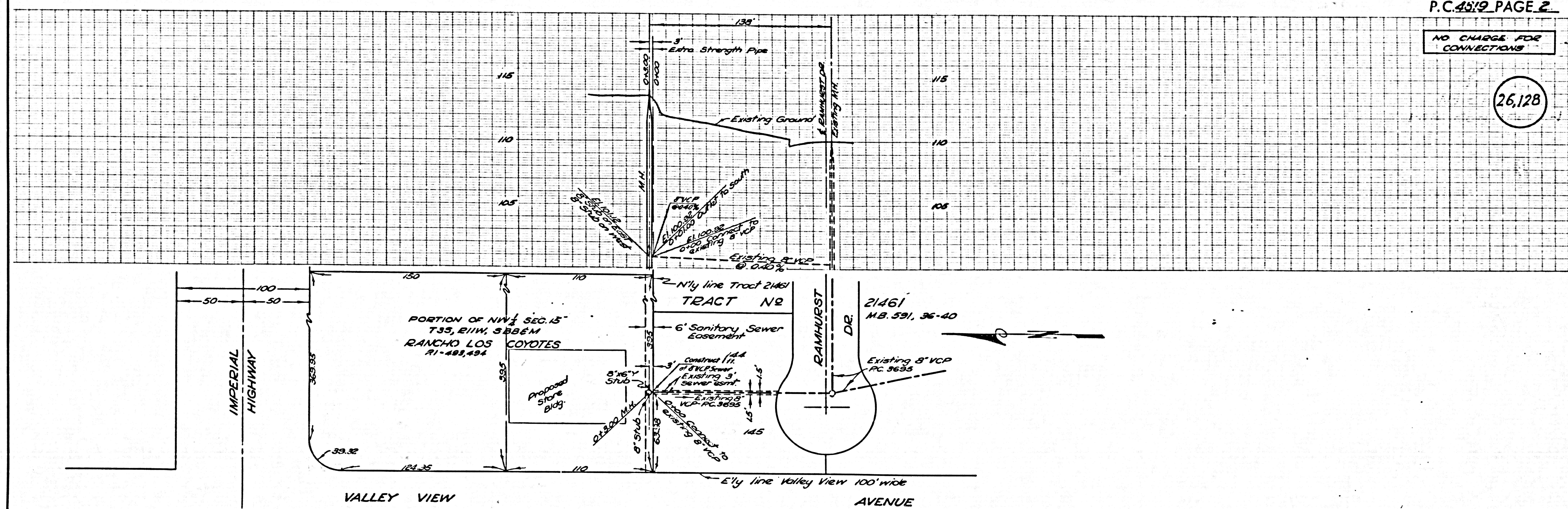
OFFICE OF COUNTY ENGINEER, REG. C. E. NO. 9424

SUBMITTED BY: Richard L. Eaton, 7-23-58
 LOS CERRITOS REGIONAL ENGINEER, REG. C. E. NO. 3871

P.C. 4819 PAGE 2

NO CHARGE FOR CONNECTIONS

26,128



7/23/58