

B.M. 40-6 L.A. CO. ENGR. R.S. 1361, PAGE 12.

Std. L.A. Co. Surveyor Monument
@ Intersection of Foothill
Blvd and Valley Center Ave.
Elev 882.171

SAN DIMAS BLDG. DIST. NO. 10

NOTE

PROVIDE STAKES ON THE PROPERTY LINE OR PROPERTY LINES PRODUCED AT RIGHT ANGLES TO THE SEWER LINE AT THE CENTER LINE OF EACH MANHOLE.
NO REPRESENTATIVE OF THE COUNTY ENGINEER WILL SURVEY OR LAYOUT ANY PORTION OF THE WORK.
THE OWNER OR HIS AUTHORIZED REPRESENTATIVE SHALL FURNISH THE COUNTY ENGINEER WITH GRADE SHEETS AND STATION FOR ALL HOUSE LATERALS AND T BRANCHES AND SHALL PROVIDE STAKES FOR THEM AT THEIR PROPER LOCATIONS WITH STATIONING PLAINLY MARKED. ANY CHANGE IN LOCATION SHALL BE REQUESTED IN WRITING BY THE OWNER OR HIS REPRESENTATIVE.
NO REVISIONS SHALL BE MADE IN THESE PLANS WITHOUT THE APPROVAL OF THE COUNTY ENGINEER.

1. USE STANDARD MANHOLE FRAMES AND COVERS, S.A. 117.
2. USE STANDARD STRENGTH PIPE.
3. USE CEMENT MORTAR "HUB-AND-BULL" JOINTS FOR ALL 8" & 6" PIPE. SPEC. 20 & 48.
4. REPAIR ALL TRIMMS WITHIN PAVED AREA TO MEET L.A. COUNTY ROAD DEPT. OR CALIF. STATE HIGHWAY DEPT. REQUIREMENTS IN ACCORDANCE WITH PERMITS.
5. DISCASE FOUR FEET OF SEWER AT POINTS OF INTERFERENCE WITH POLES, CREEPS, ETC., S-4-178.
6. T & E ESTABLISHING SURVEYING TO BE LOW AND HORIZONTAL.
7. ALL STRUCTURES SHALL BE BRICK SEWER STRUCTURES, S.A. 104.
8. FOR ALLOWABLE LEAKAGE TEST USE FORMULA NO. 1 SPEC'S, SEC. 27.
9. MANHOLE TOPS IN UNIMPROVED RIGHTS-OF-WAY TO BE 6" ABOVE FINISHED GRADE.
10. THE CONTRACTOR SHALL NOTIFY THE CONSTRUCTION & STORM DRAIN DIVISION BY TELEPHONE, MADISON 94747, 24 HOURS, AT LEAST 24 HOURS BEFORE STARTING ANY WORK UNDER THIS CONTRACT.

PROFILE ALIGNMENT AND GRADE OF **P.C. 4820**
SANITARY SEWERS PAGE **1**
TO BE CONSTRUCTED IN **26519**

ZARA STREET

PRIVATE CONTRACT NO. 4820

W.S. 48

2 SHEETS, 3 PAGES

SCALE: HORIZ. 1" = 40' VERT. 1" = 4'

JULY, 1958

PREPARED IN THE OFFICES OF

QUINTON ENGINEERS, LTD.

By **H. W. Lerner**

REG. C. E. NO. 2462

FOR LEGEND SEE PLAN NO. S-A-64

NOTE: GRADES TO WHICH THIS IMPROVEMENT IS TO BE CONSTRUCTED ARE SHOWN ON PLANS AND PROFILES. GRADE POINTS FOR TOP OF CURB, CENTER LINE OF STREETS, OR CENTER LINE OF ALLEYS ARE SHOWN BY CIRCLES ON PROFILES AT ALL POINTS BETWEEN DESIGNATED POINTS THE GRADE SHALL BE ESTABLISHED SO AS TO CONFORM TO A STRAIGHT LINE BETWEEN SAID DESIGNATED POINTS.
ELEVATIONS ARE IN FEET ABOVE L.S. C.E. & S.F. LEVEL, BATHY. 107 1929.
THE DRAWINGS AND THE DATA HEREON ARE HEREBY MADE A PART OF THE SPECIFICATIONS.
WORK SHALL BE CONSTRUCTED ACCORDING TO SPECIFICATIONS ON FILE IN THE OFFICE OF THE COUNTY ENGINEER AND SHALL BE PROSECUTED ONLY IN THE PRESENCE OF THE COUNTY ENGINEER.
BEFORE WORK CAN BE STARTED, THE CONTRACTOR MUST OBTAIN A PERMIT TO EXCAVATE IN COUNTY STREETS FROM THE L.A. COUNTY ROAD DEPT. (257) 2471 AND MAKE A DEPOSIT WITH THE COUNTY ENGINEER, ROOM 324 PAN AMERICAN BLDG., 215 SO. BROADWAY SUFFICIENT TO COVER THE COST OF CONSTRUCTION INSPECTION AND RECORD PLANS.
APPROVAL OF THIS PLAN BY THE COUNTY OF LOS ANGELES DOES NOT CONSTITUTE A REPRESENTATION AS TO THE ACCURACY OF THE LOCATION OR OF THE EXISTENCE OR NON-EXISTENCE OF ANY UNDERGROUND UTILITY PIPE, OR STRUCTURE WITHIN THE LIMITS OF THIS PROJECT. THIS NOTE APPLIES TO ALL PAGES.
IF WORK IS TO BE DONE IN A STATE HIGHWAY, A PERMIT MUST BE OBTAINED FROM THE STATE OF CALIFORNIA, DIVISION OF HIGHWAYS, 138 SOUTH SPRING STREET.

COUNTY OF LOS ANGELES, CALIFORNIA

APPROVED, JOHN A. LAMBE, COUNTY ENGINEER

APPROVED, A. M. RAWN, CHIEF ENGINEER

By **Ed Hughes** SANITATION ENGINEER

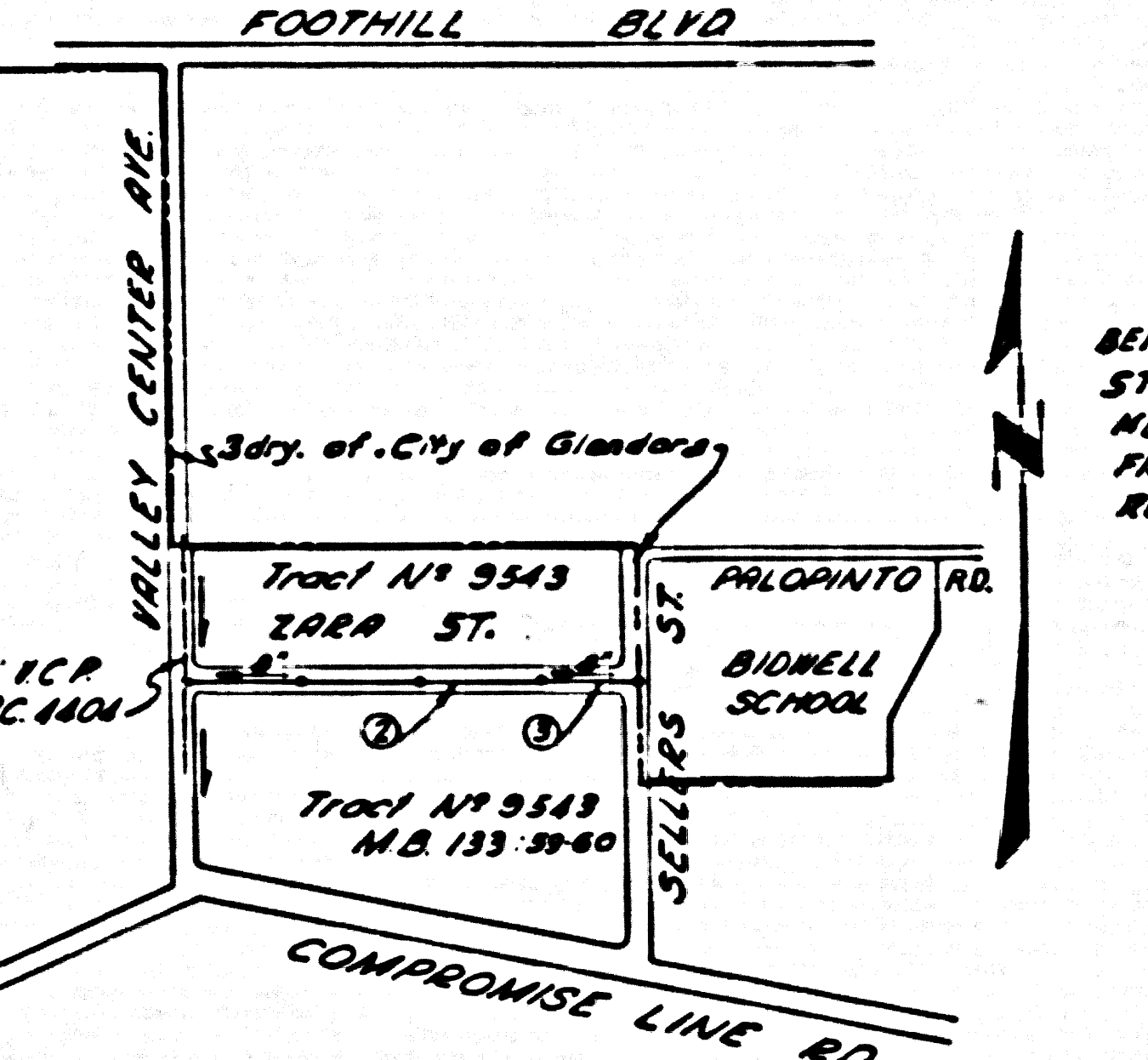
By **H. W. Lerner** OFFICE ENGINEER

CHECKED BY **Ed O'Neil** D-21-58

OFFICE OF COUNTY ENGINEER, REG. C. E. NO. 2462

APPROVED, CITY OF GLENDDORA
By **Paul E. Sullivan** CITY ENGINEER 8-7-58

CONNECTION CHARGES AS INDICATED
L. Lerner 8-6-58

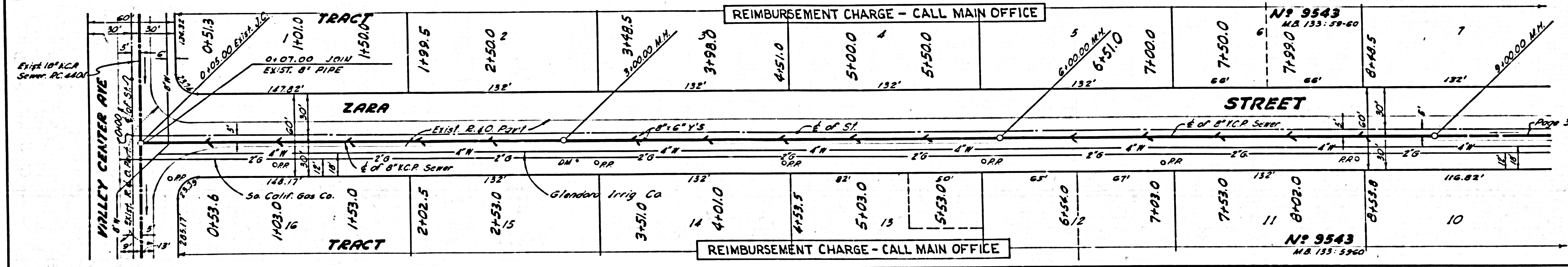
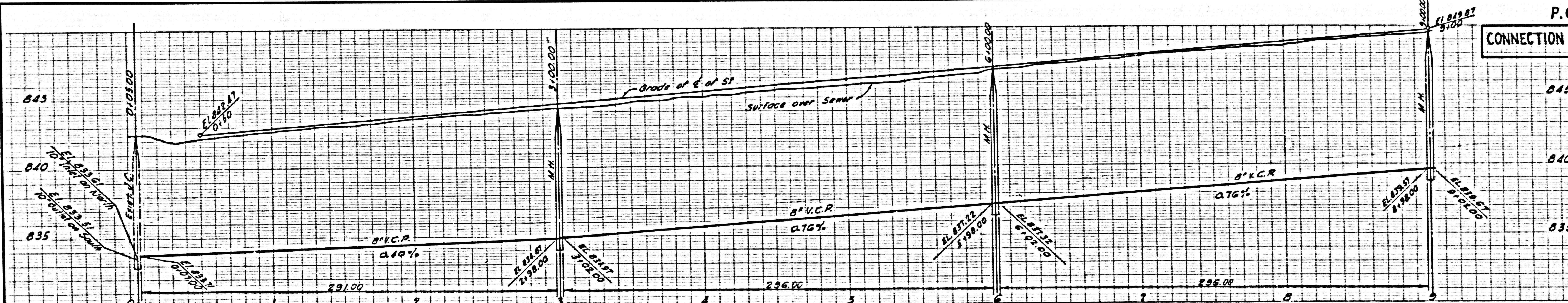


BEFORE EXCAVATING IN CITY STREETS, THE CONTRACTOR MUST OBTAIN A PERMIT FROM THE CITY OF GLENDDORA ROAD DEPT.

P.C. 4820 PAGE 2

CONNECTION CHARGES AS INDICATED

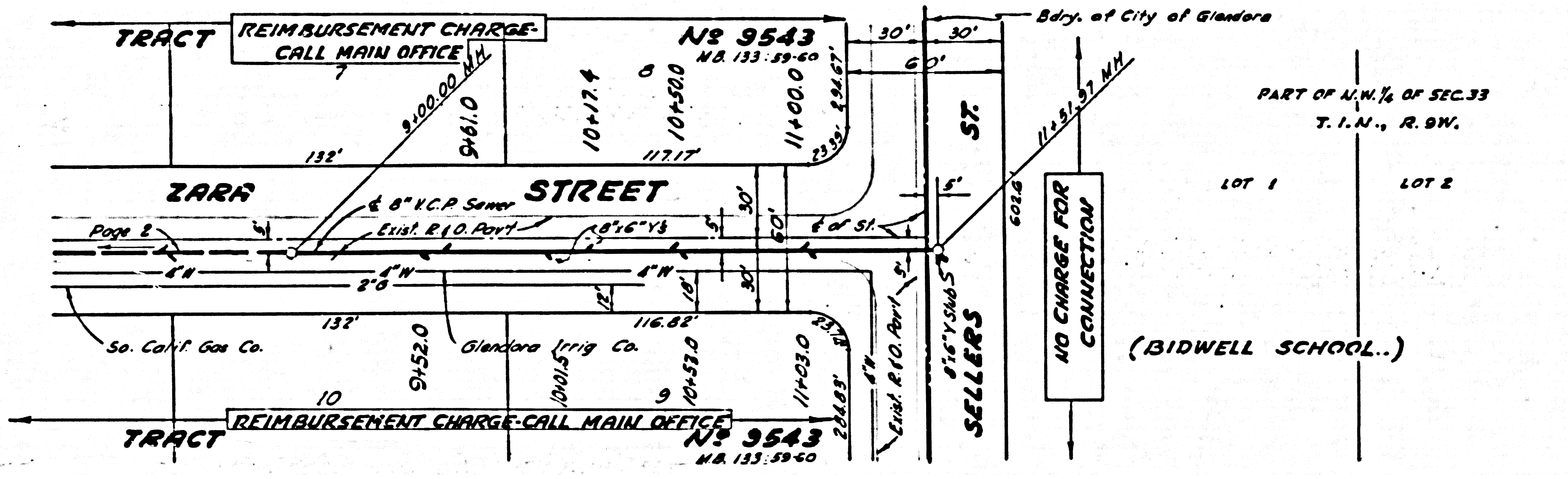
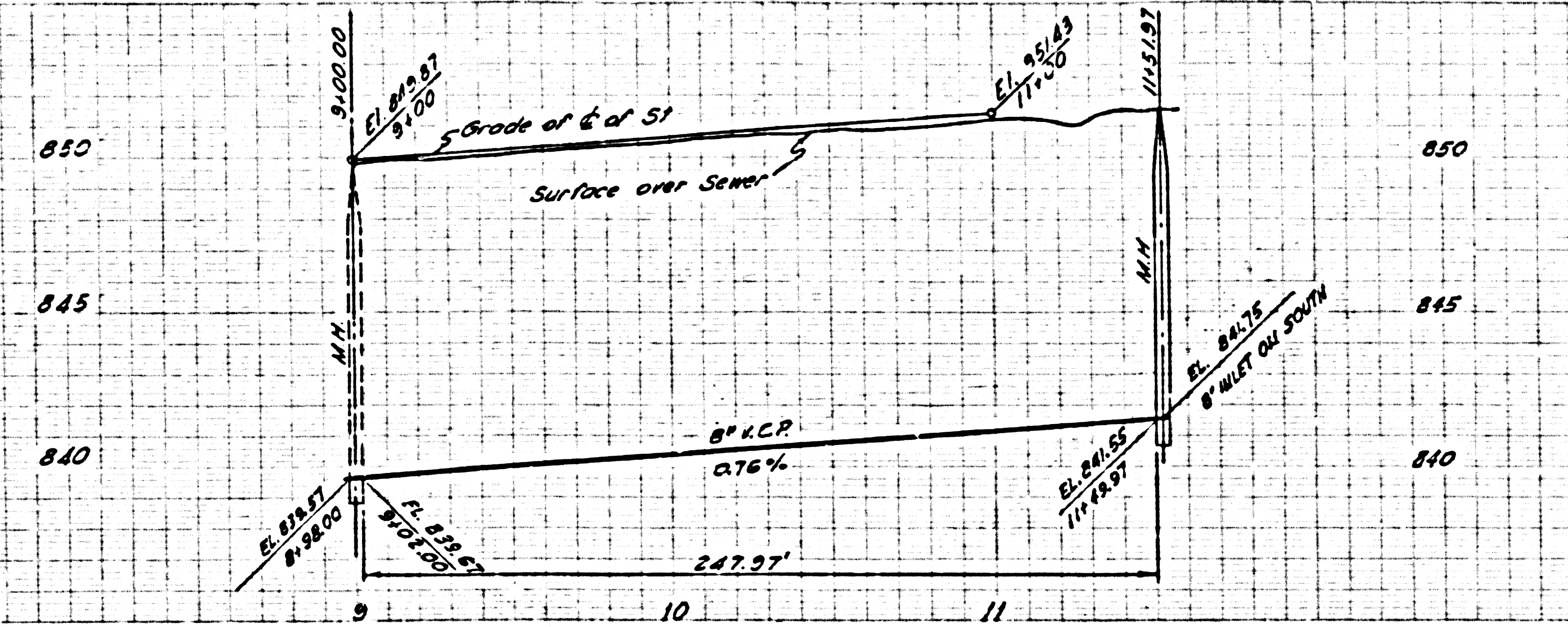
26520



P.C. 4820 0

CONNECTION CHARGES AS INDICATED

26,521



P.C. 4820