

B.A. SY 2746
 2 FT edge CONC walk to house
 No. 14156, Leffingwell Rd. 45' S
 & Leffingwell Rd. 45' W & Burgess
 Ave.
 Adj. Elev. - 189.621 (1952 Adj.)

NO CHARGE FOR
 CONNECTIONS
 E. Reuter 7-2-58

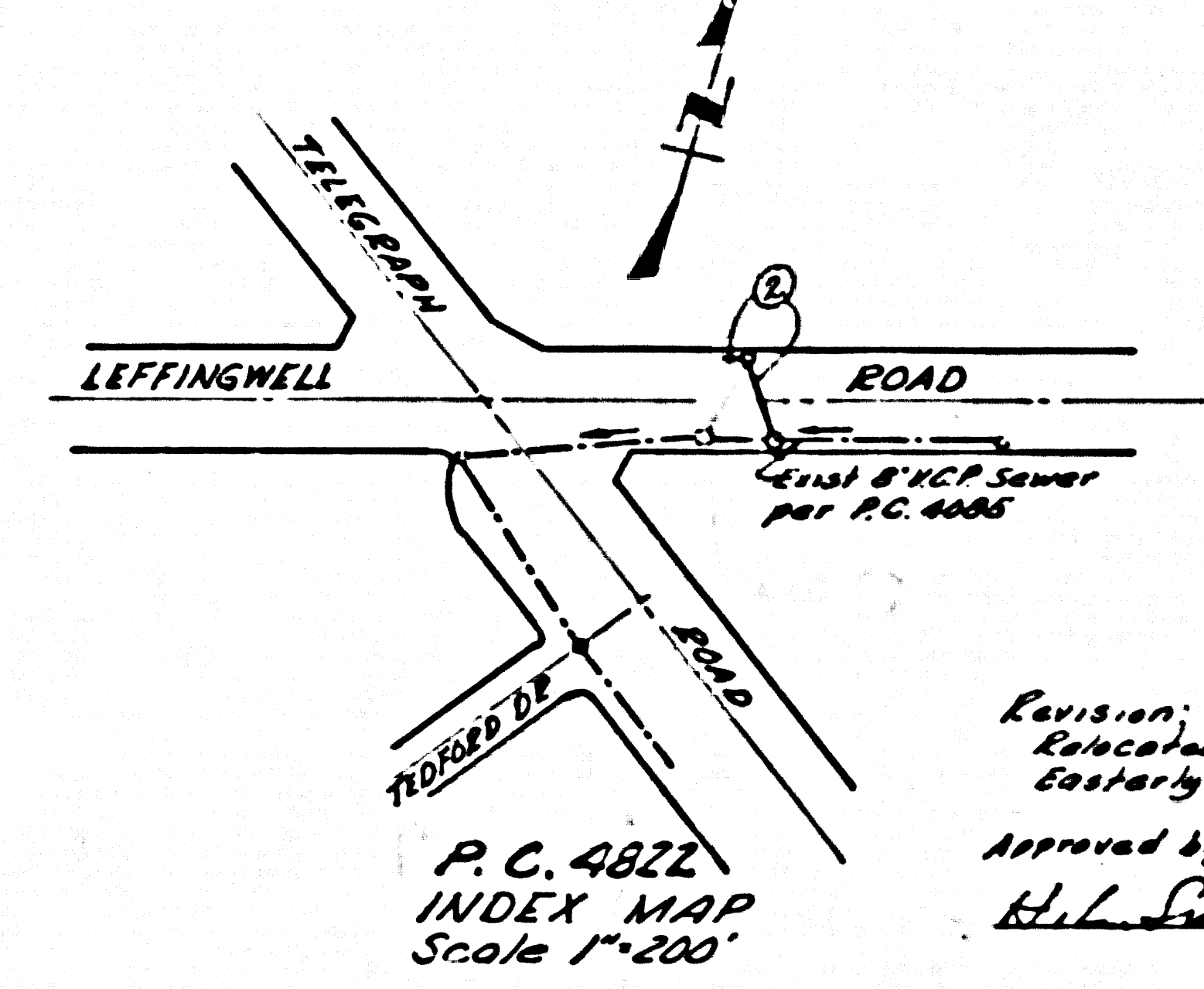
WHITTIER BLDG. DIST. NO. 11

- NOTES:
- PROVIDE STAKES ON THE PROPERTY LINE OR PROPERTY LINE PRODUCED AT RIGHT ANGLES TO THE SEWER LINE AT THE CENTER LINE OF EACH MANHOLE.
 - NO REPRESENTATIVE OF THE COUNTY ENGINEER WILL SURVEY OR LAY OUT ANY PORTION OF THE WORK.
 - THE OWNER OR HIS AUTHORIZED REPRESENTATIVE SHALL FURNISH THE COUNTY ENGINEER WITH GRADE SHEETS AND STATIONING PLANS FOR ALL HOUSE LATERALS AND T-BRANCHES AND SHALL PROVIDE STAKES FOR THEM AT THEIR PROPER LOCATIONS WITH STATIONING PLANS. ANY CHANGE IN LOCATION SHALL BE REQUESTED IN WRITING BY THE OWNER OR HIS REPRESENTATIVE.
 - NO SEWERAGE SHALL BE MADE IN THESE PLANS WITHOUT THE APPROVAL OF THE COUNTY ENGINEER.
 - USE STANDARD MANHOLE FRAMES AND COVERS, S.A. 117.
 - USE STANDARD STRENGTH PIPE.
 - USE CHANDLERS MORTAR, "W/6 O.S. LIME", OR "SPEED-SEAL" FOR ALL VITRIFIED CLAY PIPE JOINTS. USE S.A.C. SEC. 7 3-4-58
 - RESURFACE ALL TRENCH WITHIN PAVED AREA TO MEET L.A. COUNTY ROAD DEPT., OR CALIF. STATE HIGHWAY DEPT. REQUIREMENTS IN ACCORDANCE WITH PERMITS.
 - ENCASE FOUR FEET OF SEWER AT POINTS OF INTERFERENCE WITH POLES, S.A. 122 - CASE III.
 - ALL STRUCTURES SHALL BE BRICK SEWER STRUCTURES, S.A. 104, Except as Noted.
 - FOR ALLOWABLE LEAKAGE TEST USE FORMULA NO. 100, S.P.C.E. 100, 2.
 - MANHOLE TOPS IN UNPAVED RIGHTS-OF-WAY TO BE 6" ABOVE FINISHED GRADE.
- The underground utilities shown herein are in accordance with available information and are approximately only. Exact locations shall be verified by the contractor.

PROFILE ALIGNMENT AND GRADE OF **P.C. 4822**
SANITARY SEWERS PAGE 1
 TO BE CONSTRUCTED IN
LEFFINGWELL ROAD 26.102
CROSSING

PRIVATE CONTRACT NO. 4822
 W.S. 34
 1 SHEETS, 2 PAGES
 SCALE: VERT. 1"=6'
 HORIZ. 1"=40'
 JULY, 1958
 PREPARED IN THE OFFICES OF
RICHARD G. WITT
 Consulting Civil Engineer
 REG. C. E. NO. 44616
 FOR LEGEND SEE PLAN NO. S-A-64

NOTE:
 GRADES TO WHICH THIS IMPROVEMENT IS TO BE CONSTRUCTED ARE SHOWN ON PLANS AND PROFILES. GRADE POINTS FOR TOP OF CURB, CENTER LINE OF DRIVE, OR CENTER LINE OF ALLEY ARE SHOWN BY CIRCLES ON PROFILES. AT ALL POINTS BETWEEN DESIGNATED POINTS THE GRADE SHALL BE ESTABLISHED SO AS TO CONFORM TO A STRAIGHT LINE DRAWN BETWEEN SAID DESIGNATED POINTS.
 ELEVATIONS ARE IN FEET ABOVE U.S.C. & G.S. MEAN SEA LEVEL UNLESS OTHERWISE NOTED.
 THIS DRAWING AND THE DATA HEREON ARE HEREBY MADE A PART OF THE SPECIFICATIONS.
 WORK SHALL BE CONSTRUCTED ACCORDING TO SPECIFICATIONS ON FILE IN THE OFFICE OF THE COUNTY ENGINEER AND SHALL BE PROCEEDED ONLY IN THE PRESENCE OF THE COUNTY ENGINEER.
 BEFORE WORK CAN BE STARTED, THE CONTRACTOR MUST OBTAIN A PERMIT TO EXCAVATE IN COUNTY STREETS FROM THE L.A. COUNTY ROAD DEPT., S.A.C. 7-1-58. THE CONTRACTOR SHALL MAKE A DEPOSIT WITH THE COUNTY ENGINEER, ROOM 334 PAM AMERICAN BLDG., 334 SO. BRADWAY, SUFFICIENT TO COVER THE COST OF CONSTRUCTION INSPECTION AND RECORD PLANS.
 APPROVAL OF THIS PLAN BY THE COUNTY OF LOS ANGELES DOES NOT CONSTITUTE A REPRESENTATION AS TO THE ACCURACY OF THE LOCATION OF OR THE EXISTENCE OR NON-EXISTENCE OF ANY UNRECORDED UTILITY PIPE, OR STRUCTURE WITHIN THE LIMITS OF THIS PROJECT. THIS NOTE APPLIES TO ALL PAGES.
 IF WORK IS TO BE DONE IN A STATE HIGHWAY, A PERMIT MUST BE OBTAINED FROM THE STATE OF CALIFORNIA, DIVISION OF HIGHWAYS, 138 SOUTH SPRING STREET.



Revision:
 Enclosed Sewer
 Eastward
 Approved by:
 H.L. Sullivan

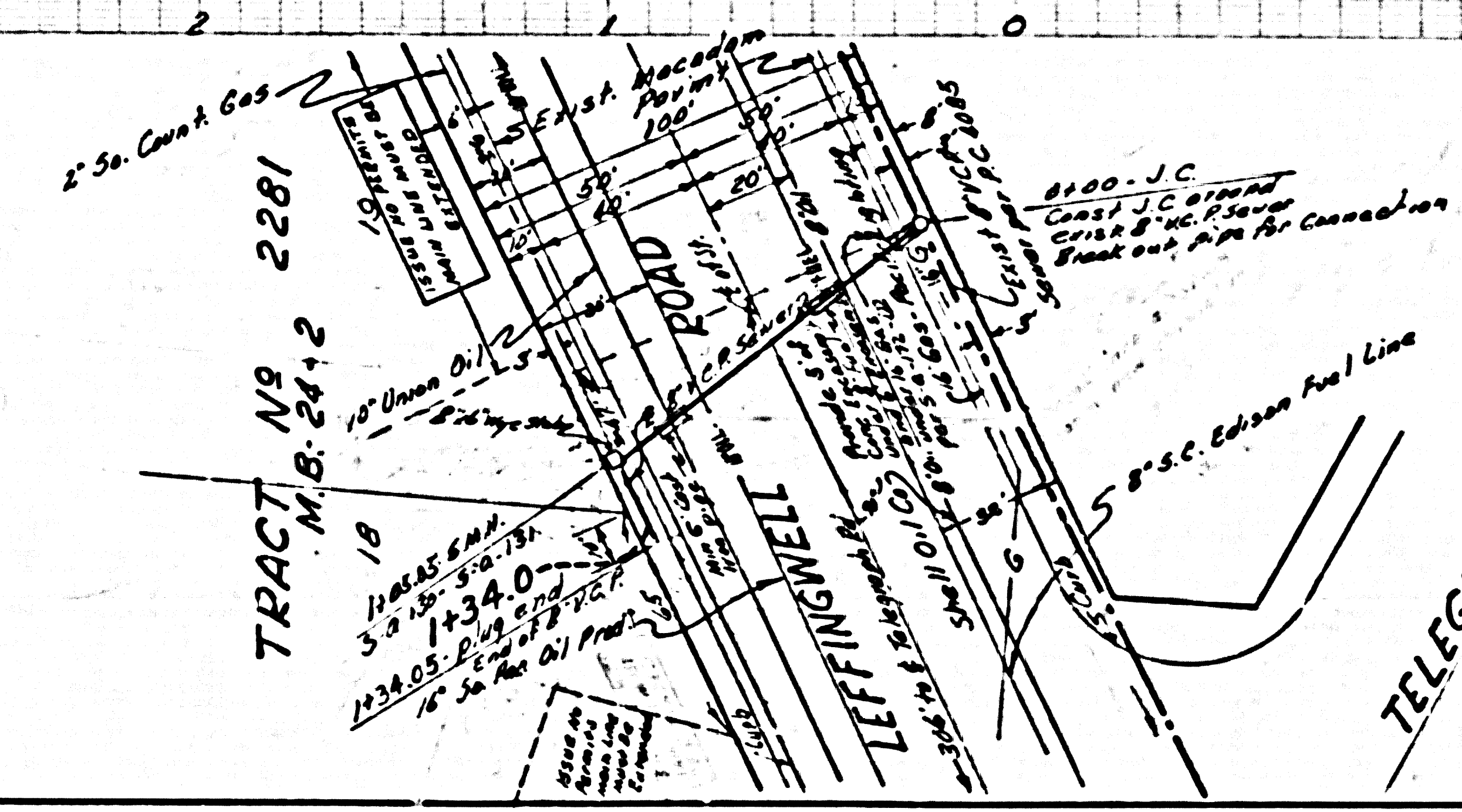
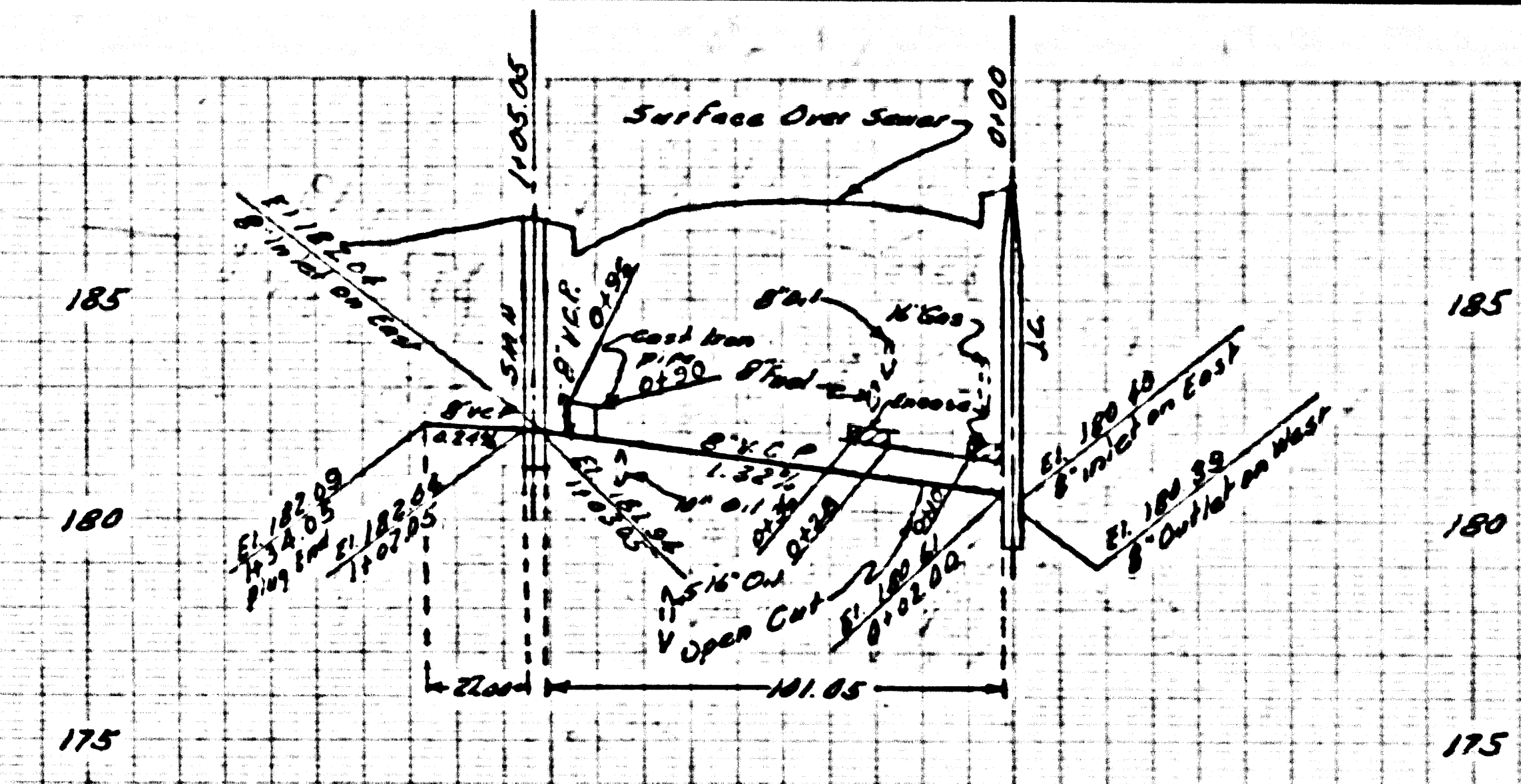
COUNTY OF LOS ANGELES, CALIFORNIA
 APPROVED, JOHN A. LAMBE, COUNTY ENGINEER
 APPROVED, A. M. BAWN, CHIEF ENGINEER
 CO. SAN. ENG. NO. 62
 BY E.H. Hughes SANITATION ENGINEER
 CHECKED BY Carl E. H. Penner 7-2-58 OFFICE ENGINEER
 OFFICE OF COUNTY ENGINEER, REG. C. E. NO. 12,132
 SUBMITTED BY John L. Eaton 7-2-58
 LEFFINGWELL REPAIR ENGINEER, R.C.E. NO. 2871

P.C. 4822
 INDEX MAP
 Scale 1"=200'

P.C. 4822 PAGE 2

NO CHARGE FOR
 CONNECTIONS

26.103



8/22/58