

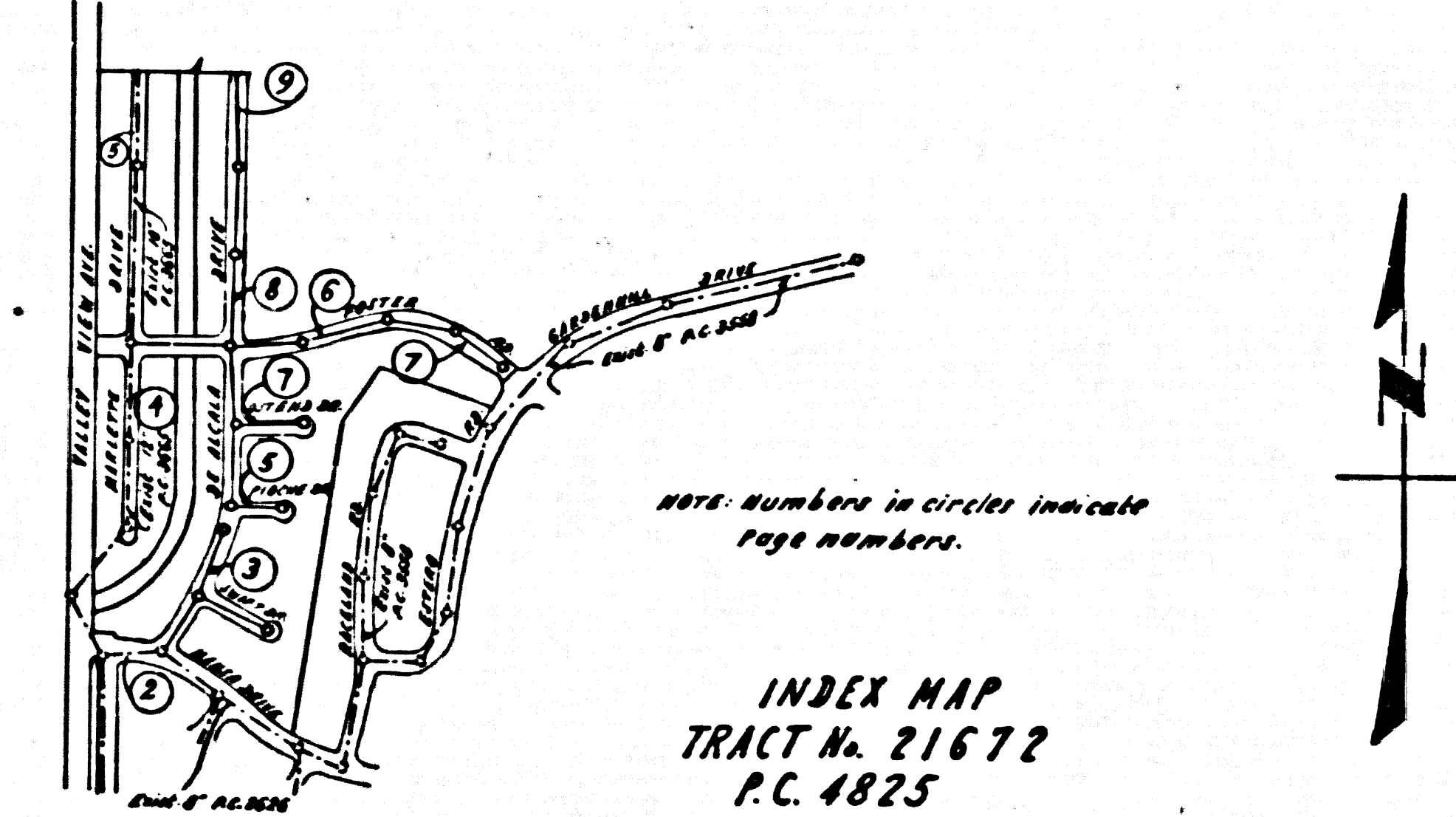
Branch MARK, Valley View Ave. and Pasadena Ave 100'-1 of the E of Rosecrans Ave. and 1/4 M. of the E of Valley View Ave., set in concrete 12" below the street surface in a well cut through the pavement and protected by a cast iron cover marked "County Surveyor Monument" and County Surveyor Monument marked "S.M. L.C. 259" S.A. 1922, N. 1922 A.V. 41, 40, 315
 Note: This Branch Mark is located on "11 9718 (12-10-22) by L.A. Co. and 1922, and 6-243 to an elevation to center of S.A. Co. Rd. Sep. 20, 1922.

**DOUBLE SCALE
 NORWALK BLDG. DIST. NO. 4.2**

PROFILE ALIGNMENT AND GRADE OF **P.C. 4825**
SANITARY SEWERS PAGE 1
 TO BE CONSTRUCTED IN
 TRACT No. 21672 (26811)

- NOTE:**
 PROVIDE STAKES ON THE PROPERTY LINE OR PROPERTY LINES PRODUCED AT RIGHT ANGLES TO THE SEWER LINE AT THE CENTER LINE OF EACH MANHOLE.
 NO REPRESENTATIVE OF THE COUNTY ENGINEER WILL SURVEY OR LAYOUT ANY PORTION OF THE WORK.
 THE OWNER OR HIS AUTHORIZED REPRESENTATIVE SHALL FURNISH THE COUNTY ENGINEER WITH GRADE SHEETS AND STATION FOR ALL HOUSE LATERALS AND Y BRANCHES AND SHALL PROVIDE STAKES FOR THEM AT THEIR PROPER LOCATIONS WITH STATIONING AND PLAIN MARKS. ANY CHANGE IN LOCATION SHALL BE REQUESTED IN WRITING BY THE OWNER OR HIS REPRESENTATIVE.
 NO REVISIONS SHALL BE MADE IN THESE PLANS WITHOUT THE APPROVAL OF THE COUNTY ENGINEER.
1. USE STANDARD MANHOLE FRAMES AND COVERS, S.A. 117.
 2. USE STANDARD STRENGTH PIPE EXCEPT AS NOTED.
 3. USE CEMENT MORTAR SPACELINE, 2" x 1/2" x 1/2" FOR ALL REVISIONS EXCEPT WHERE NOTED PER OWNER'S SETTINGS SET AS.
 4. RESURFACE ALL TRENCH WITHIN PAVED AREA TO MEET L. A. COUNTY ROAD DEPT., OR CALIF. STATE HIGHWAY DEPT. REQUIREMENTS IN ACCORDANCE WITH 18481.
 5. SPACED FOUR FEET OF SEWER AT POINTS OF INTERFERENCE WITH POLES, S.A. 172 CASE III.
 6. HOUSE LATERALS TO BE CONSTRUCTED WITH INVERTS AT PROPERTY LINE 4 FEET BELOW CURB GRADE EXCEPT AS NOTED.
 7. ALL STRUCTURES SHALL BE BRICK SEWER STRUCTURES, S.A. 194, EXCEPT AS NOTED.
 8. FOR ALLOWANCE (BRIDGE TEST USE FORMULA NO. 1) SPEC'S, SEC. 2-4.
 9. MANHOLE TOPS IN IMPROVED RIGHTS-OF-WAY TO BE 6" ABOVE FINISHED GRADE.
 10. THE CONTRACTOR SHALL VERIFY CORNER OF ALL SUBSTRUCTURES AND SHALL BE RESPONSIBLE FOR THEIR LOCATION.
 11. NO CONSTRUCTION SHALL BE PERMITTED IN TRENCH AREAS UNLESS A SUFFICIENT CERTIFICATION IS FURNISHED TO THE CONTRACTOR BY THE COUNTY ENGINEER'S REPRESENTATIVE THAT CONSTRUCTION IS GREATER THAN 20'-0".
 12. IF CONSTRUCTION IS LESS THAN 20'-0", THE TRENCH MUST BE GRADED AS SHOWN ON PLANS (PAGE 1 & 2).
 13. IF CONSTRUCTION IS GREATER THAN 20'-0", GRADING IS NOT REQUIRED UNLESS SHOWN OTHERWISE BUT IS SUBSTITUTED FOR CEMENT MORTAR FOR ALL JOINTS TO FILLING AREAS.
 14. THE PRIVATE ENGINEER IS TO FURNISH THE DOUBLE LATERAL DEPTH AT THE PROPERTY LINE BELOW THE TOP OF CURB ELEVATION FOR EACH HOUSE LATERAL ON THE GRADE SHEET.

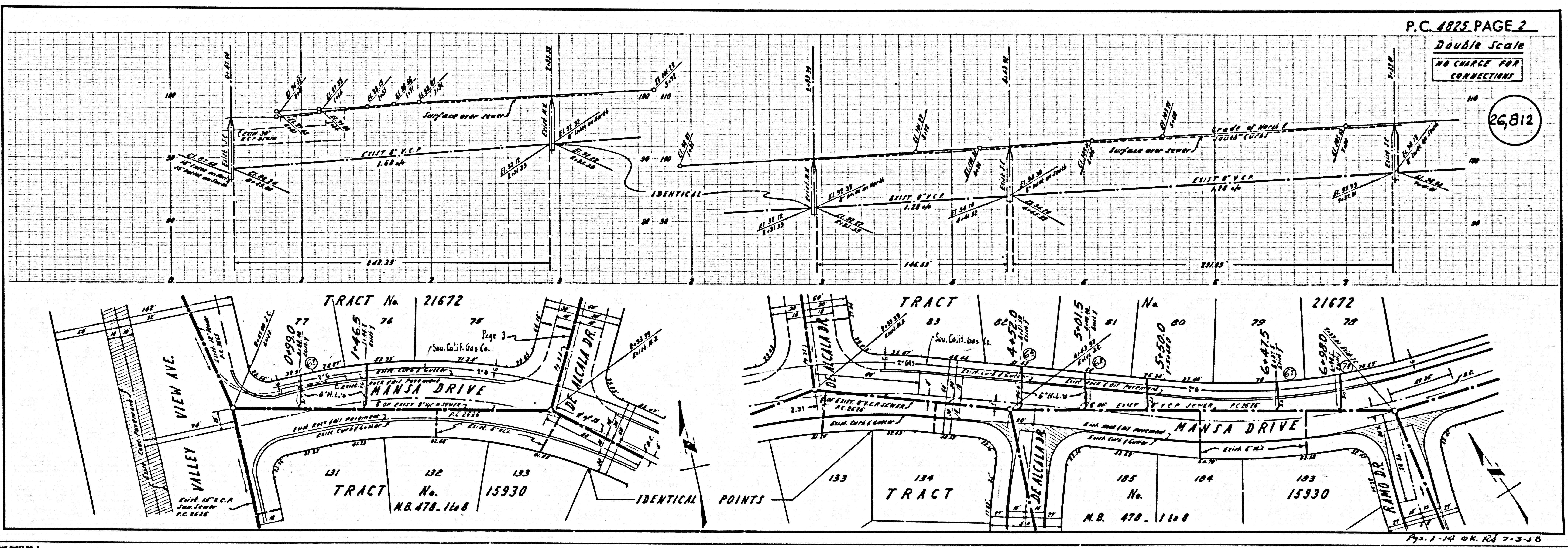
PRIVATE CONTRACT NO. 4825
 W.S. 34
 5 SHEETS, 2 PAGES
 SCALE: HORIZ. 1" = 40' VERT. 1" = 4'
 JUNE, 1958
 PREPARED IN THE OFFICES OF
MCINTIRE & QUIROS INC.
 BY: Oliver Thomas 6/19/58
 REG. C. E. NO. 3538
 FOR LEGEND SEE PLAN NO. S-A-64



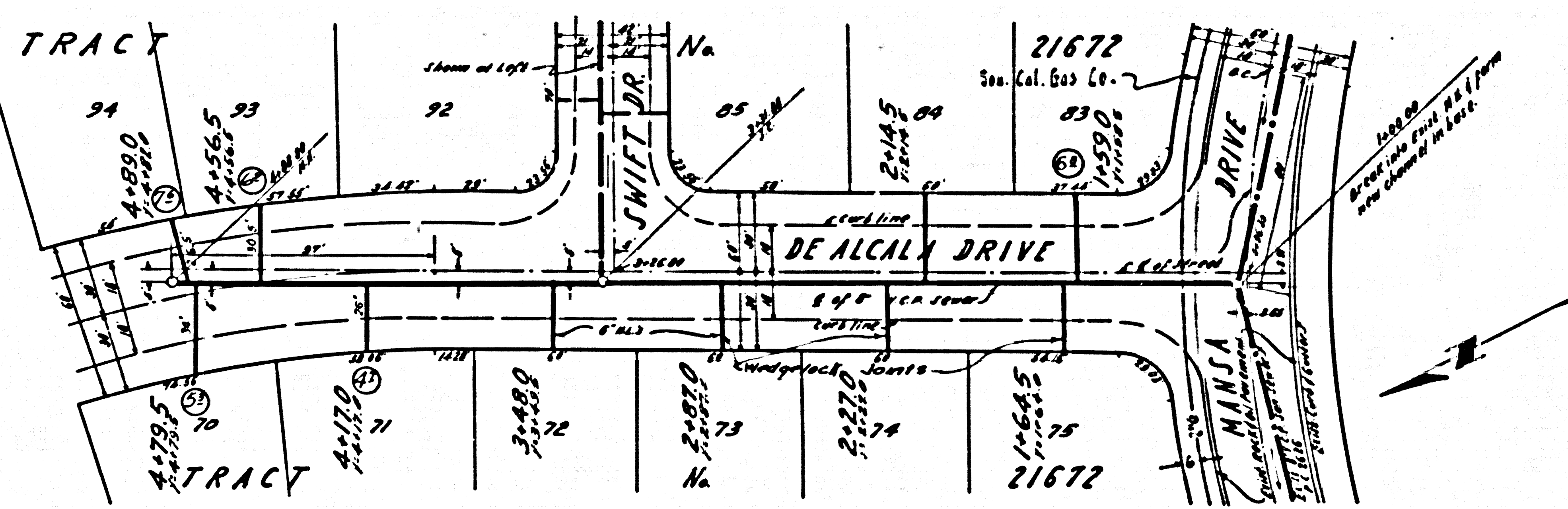
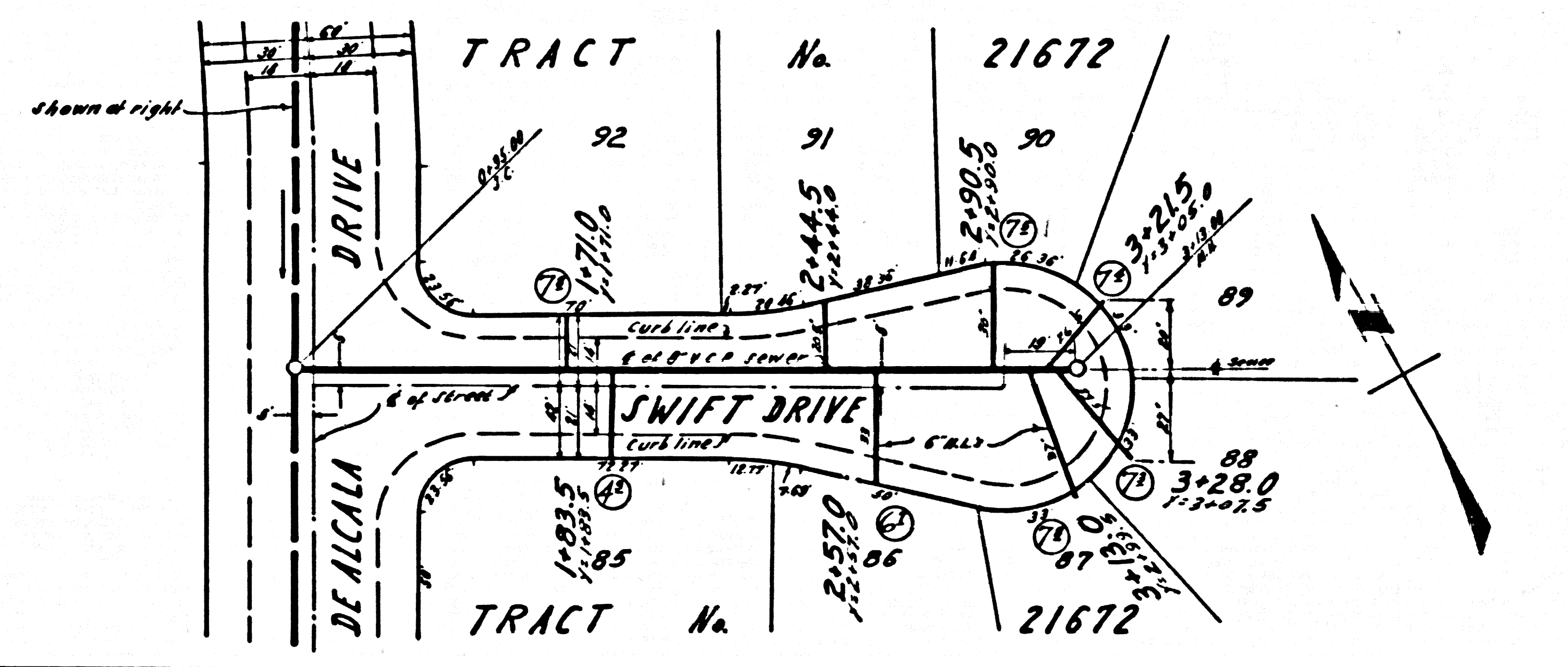
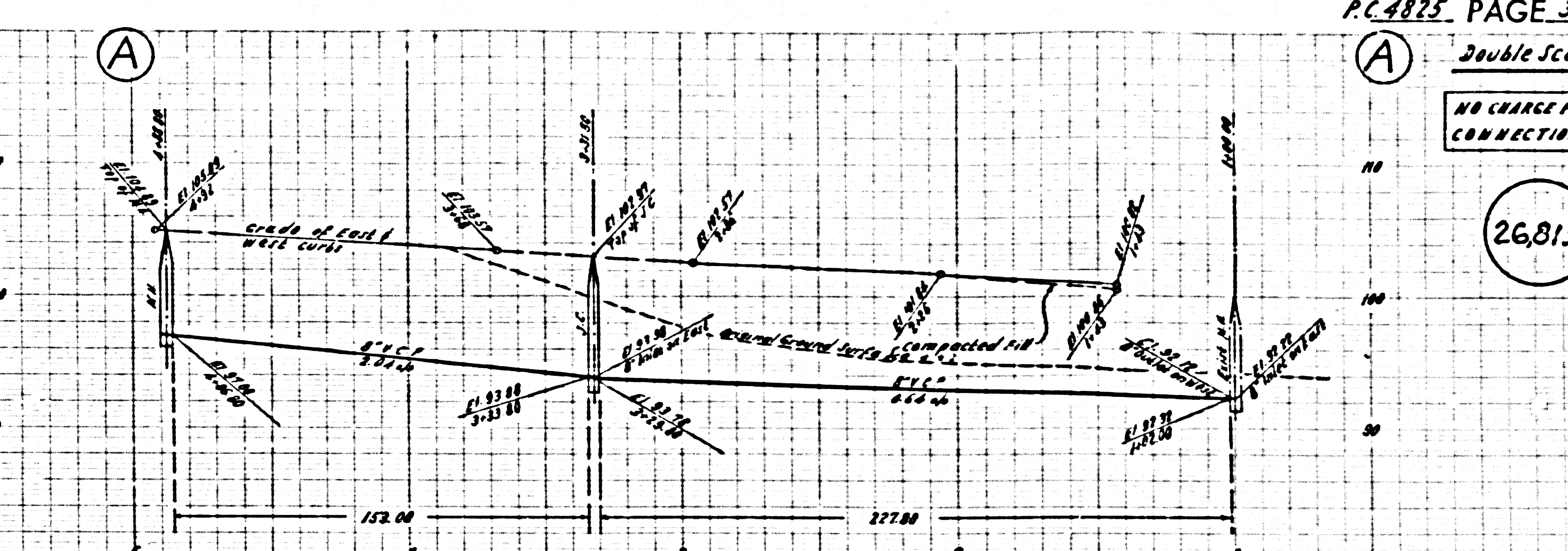
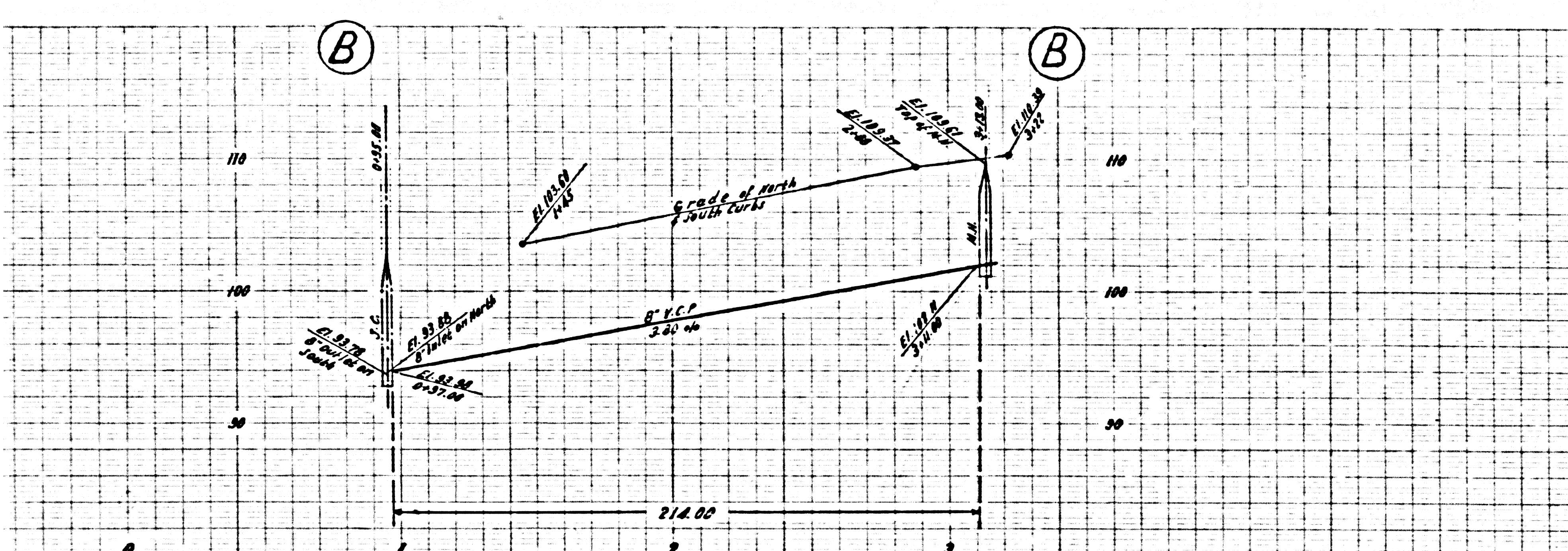
**NO CHARGE FOR
 CONNECTIONS**
 E. Lumber 10-20-58

NOTE:
 GRADES TO WHICH THIS IMPROVEMENT IS TO BE CONSTRUCTED ARE SHOWN ON PLANS AND PROFILES. GRADE POINTS FOR TOP OF CURB, CENTER LINE OF STREETS, OR CENTER LINE OF ALLEYS ARE SHOWN BY CIRCLES ON PROFILES. AT ALL POINTS BETWEEN DESIGNATED POINTS THE GRADE SHALL BE ESTABLISHED SO AS TO CONFORM TO A STRAIGHT LINE DRAWN BETWEEN SAID DESIGNATED POINTS.
 ELEVATIONS ARE IN FEET ABOVE U.S.C.G. SEA LEVEL EXCEPT WHERE NOTED.
 THIS DRAWING AND THE DATA HEREON ARE HEREBY MADE A PART OF THE SPECIFICATIONS.
 BEFORE WORK CAN BE STARTED, THE CONTRACTOR MUST OBTAIN A PERMIT TO EXCAVATE IN COUNTY STREETS FROM THE L. A. COUNTY ROAD DEPT., DIST. 14-4, AND MAKE A DEPOSIT WITH THE COUNTY ENGINEER, ROOM 320 PAM AMERICAN BUILDING, 313 SO. BROADWAY SUFFICIENT TO COVER THE COST OF CONSTRUCTION INSPECTION AND RECORD PLANS.
 APPROVAL OF THIS PLAN BY THE COUNTY OF LOS ANGELES DOES NOT CONSTITUTE A REPRESENTATION AS TO THE ACCURACY OF THE LOCATION OF OR THE EXISTENCE OR NON-EXISTENCE OF ANY UNDERGROUND UTILITY PIPE, OR STRUCTURE WITHIN THE LIMITS OF THIS PROJECT. THIS NOTE APPLIES TO ALL PAGES.
 IF WORK IS TO BE DONE IN A STATE HIGHWAY, A PERMIT MUST BE OBTAINED FROM THE STATE OF CALIFORNIA, DIVISION OF HIGHWAYS, 120 SOUTH SPRING STREET.

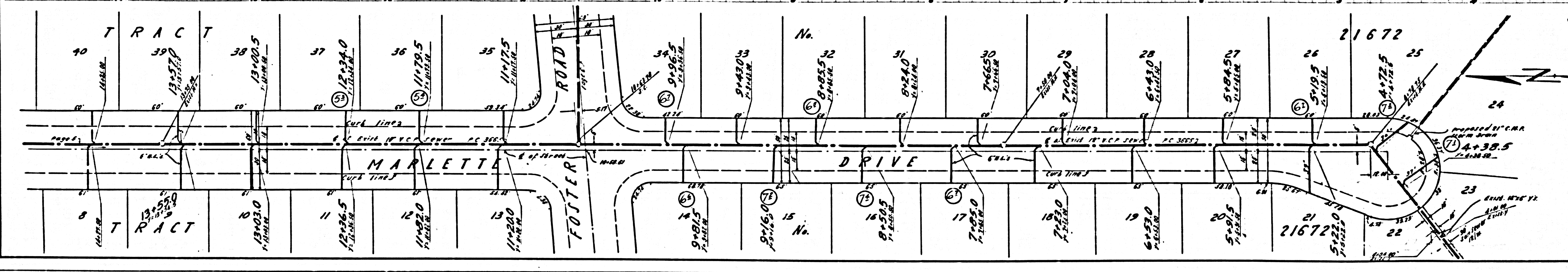
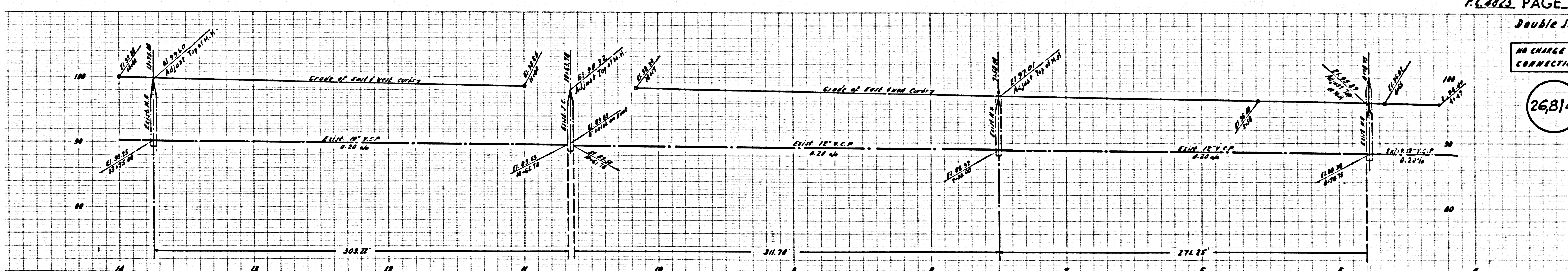
COUNTY OF LOS ANGELES, CALIFORNIA
 APPROVED, JOHN A. LAMME, COUNTY ENGINEER
 APPROVED, A. M. RAWN, CHIEF ENGINEER
 BY: H. L. Saelens 6/19/58
 SANITATION ENGINEER
 BY: W. L. Thomas
 OFFICE ENGINEER
 CHECKED BY: W. L. Thomas 6-19-58
 OFFICE OF COUNTY ENGINEER, REG. C. E. NO. 5406
 SUBMITTED BY: John L. Brown 7-2-58
 REGIONAL ENGINEER, R.C.E. NO. 3071



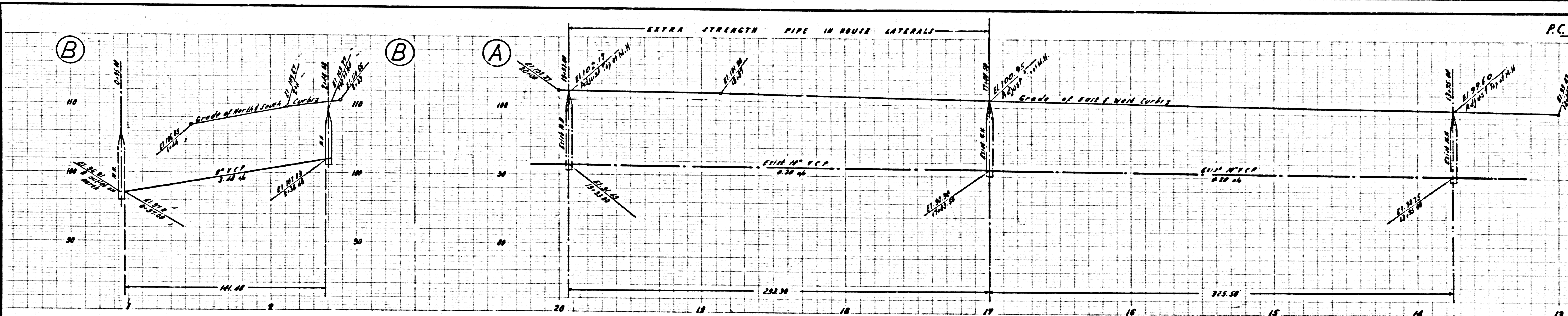
26,813



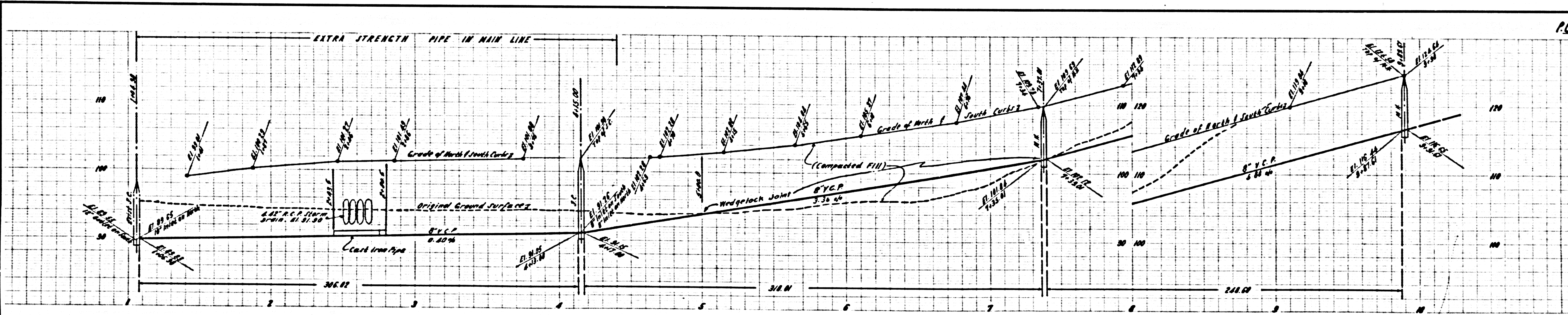
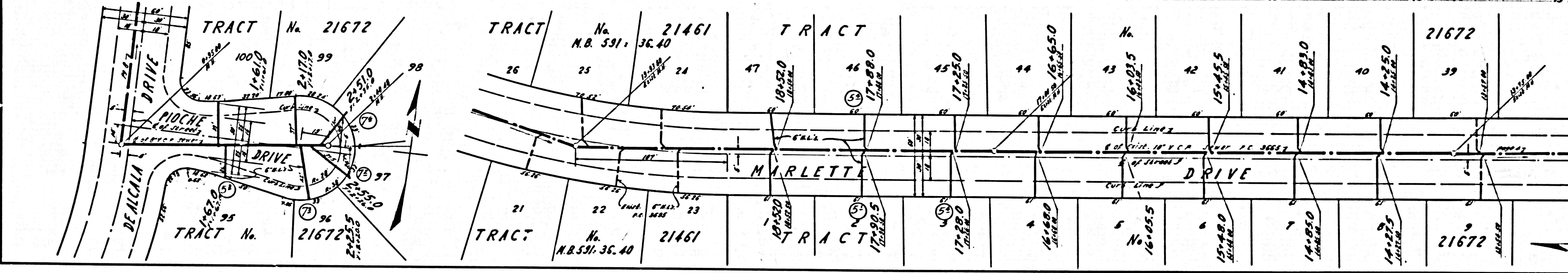
26,814



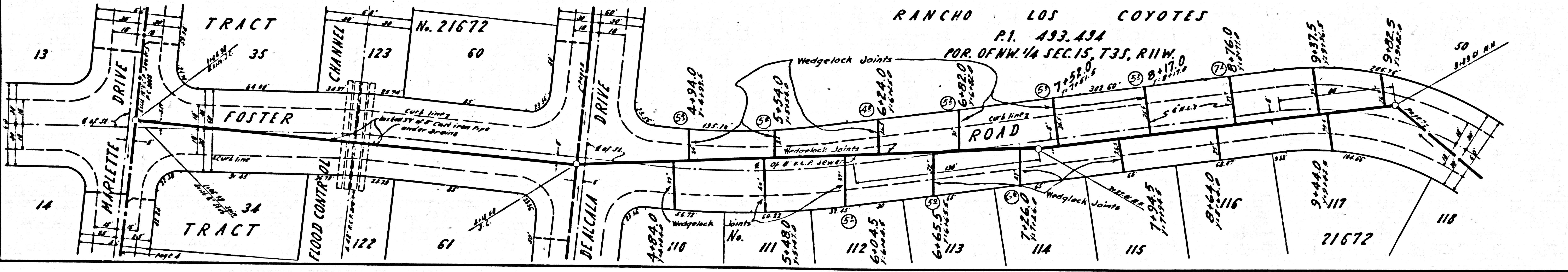
P.C. 4825 TRACT 25813



Double Scale
 NO CHARGE FOR CONNECTIONS
 26,815



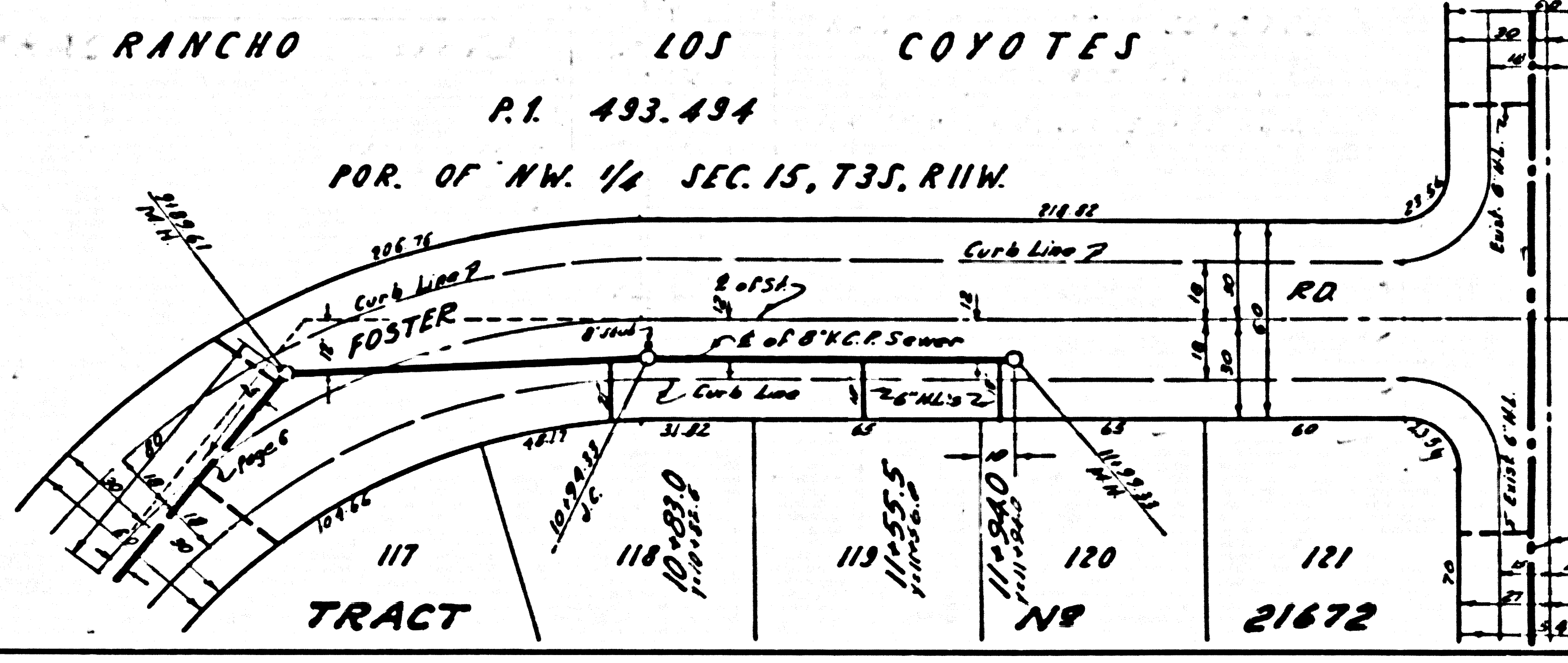
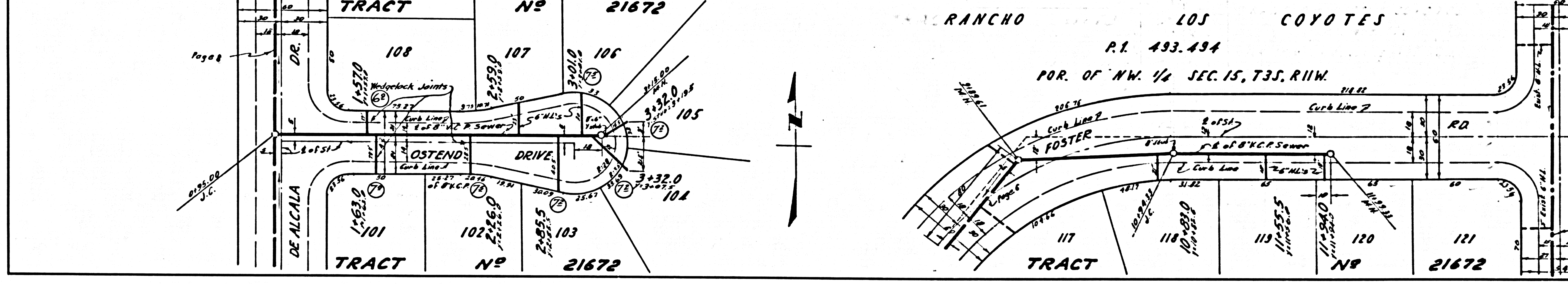
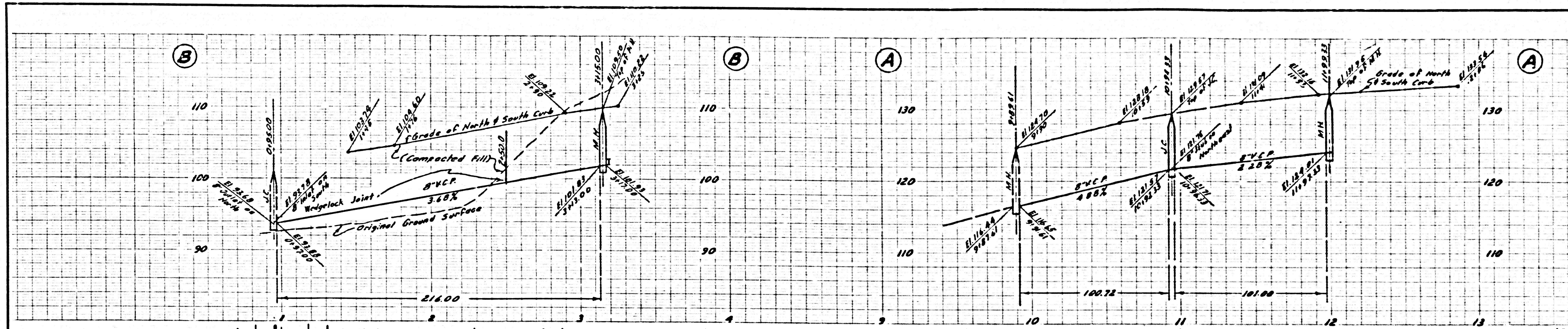
Double Scale
 NO CHARGE FOR CONNECTIONS
 26,816



SPAC M-TRACT 100000

NO CHARGE FOR CONNECTIONS

26,817



NO CHARGE FOR CONNECTIONS

26,818

