

B.M. Rd. Dept. 57 2744 Elev. 195.718 (1955 Adj.)
 L.C.T. S.W. cor. of 3rd w/ll on E. side of
 driveway to Nos. 14457 Telegraph Rd. NW
 of int. of Telegraph Rd. & Lettingwell Rd. (Baseline)

WHITTIER BLDG. DIST. NO. 11

PROFILE ALIGNMENT AND GRADE OF P.C. 4828
 SANITARY SEWERS PAGE 1
 TO BE CONSTRUCTED IN

TRACT No 24203 (26,706)

PRIVATE CONTRACT NO. 4828

W.S. 34

2 SHEETS, 3 PAGES

SCALE: VERT. 1" = 4' HORIZ. 1" = 40'

JUNE, 1958

PREPARED IN THE OFFICES OF
 OLSON SURVEYING SERVICE

REG. C. E. NO. 2210

FOR LEGEND SEE PLAN NO. S-A-64

- NOTE:
 PROFILE STAKES ON THE PROPERTY LINE OR PROPERTY LINES PRODUCED AT RIGHT ANGLES TO THE CENTER LINE AT THE CENTER LINE OF EACH MANHOLE.
 NO REPRESENTATIVE OF THE COUNTY ENGINEER WILL SURVEY OR LAYOUT ANY PORTION OF THE WORK.
 THE OWNER OR HIS AUTHORIZED REPRESENTATIVE SHALL FURNISH THE COUNTY ENGINEER WITH GRADE SHEET AND STATION FOR ALL HOUSE LATERALS AND Y BRANCHES AND SHALL PROVIDE STAKES FOR THEM AT THEIR PROPER LOCATIONS WITH STATIONING PLAINLY MARKED. ANY CHANGE IN LOCATION SHALL BE REQUESTED BY WRITING BY THE OWNER OR HIS REPRESENTATIVE.
 NO REVISIONS SHALL BE MADE IN THESE PLANS WITHOUT THE APPROVAL OF THE COUNTY ENGINEER.
1. USE STANDARD MANHOLE FRAMES AND COVERS, S-A-117.
 2. USE STANDARD STRENGTH PIPE.
 3. USE CEMENT MORTAR "WEDGE LOCK" OR "SPREAD SEAL" FOR ALL VITRIFIED CLAY PIPE JOINTS PER S.P.C. S. S.C. 30 & 31.
 4. REINFORCE ALL TRENCHES WITHIN PAVED AREAS TO MEET L. A. COUNTY ROAD DEPT. OR CALIF. STATE HIGHWAY DEPT. SPECIFICATIONS IN ACCORDANCE WITH PERMITS.
 5. SHOW FOUR FEET OF SEWER AT POINTS OF INTERFERENCE WITH POLES, S-A-176, CASE III.
 6. HOUSE LATERALS TO BE CONSTRUCTED WITH INVERTS AT PROPERTY LINE 5 FEET BELOW CURB GRADE EXCEPT AS NOTED.
 7. ALL STRUCTURES SHALL BE BRICK SEWER STRUCTURES, S-A-104.
 8. FOR ALLOWABLE SLOPES TEST USE FORMULA NO. _____ FEET, SEC. 34.
 9. MANHOLE TOPS IN UNIMPROVED RIGHTS-OF-WAY TO BE 6" ABOVE FINISHED GRADE.
 10. THE PRIVATE ENGINEER IS TO FURNISH THE HOUSE LATERAL DEPTH AT THE PROPERTY LINE BELOW THE TOP OF CURB ELEVATION FOR EACH HOUSE LATERAL, ON THE GRADE SHEET.

NOTE:
 THE CONTRACTOR SHALL NOTIFY THE CONSTRUCTION AND STORM DR.-BY DIVISION BY TELEPHONE, MADISON 9-4747, EX. 362, AT LEAST 24 HOURS BEFORE STARTING ANY WORK UNDER THIS CONTRACT.

No Charge For
 CONNECTIONS
 August 9-22-58

NOTE:
 GRADES TO WHICH THIS IMPROVEMENT IS TO BE CONSTRUCTED ARE SHOWN ON PLANS AND PROFILE. GRADE POINTS FOR TOP OF CURB, CENTER LINE OF STREETS OR CENTER LINE OF ALLEYS ARE SHOWN BY CIRCLES ON PROFILES. AT ALL POINTS BETWEEN DESIGNATED POINTS THE GRADE SHALL BE ESTABLISHED SO AS TO CONFORM TO A STRAIGHT LINE DRAWN BETWEEN SAID DESIGNATED POINTS.
 ELEVATIONS ARE IN FEET ABOVE U.S.C. & G.S. MEAN SEA LEVEL, DATUM 1929.
 THE DRAWINGS AND THE DATA HEREON ARE HEREBY MADE A PART OF THE SPECIFICATIONS.
 WORK SHALL BE CONSTRUCTED ACCORDING TO SPECIFICATIONS ON FILE IN THE OFFICE OF THE COUNTY ENGINEER AND SHALL BE PROSECUTED ONLY IN THE PRESENCE OF THE COUNTY ENGINEER.
 BEFORE WORK CAN BE STARTED, THE CONTRACTOR MUST OBTAIN A PERMIT TO EXCAVATE IN COUNTY STREETS FROM THE L. A. COUNTY ROAD DEPT. DIRECTLY OR BY AGENT WITH THE COUNTY ENGINEER, BOTH IN THE AMERICAN STANDARD AND TO INCORPORATE THE COST OF CONSTRUCTION INSPECTION AND RECORD PLANS.
 APPROVAL OF THIS PLAN BY THE COUNTY OF LOS ANGELES DOES NOT CONSTITUTE A REPRESENTATION AS TO THE ACCURACY OF THE LOCATION OF OR THE EXISTENCE OR NON-EXISTENCE OF ANY UNDERGROUND UTILITY PIPE, OR STRUCTURE WITHIN THE LIMITS OF THE PROJECT. THIS NOTE APPLIES TO ALL PAGES.
 IF WORK IS TO BE DONE IN A STATE HIGHWAY, A PERMIT MUST BE OBTAINED FROM THE STATE OF CALIFORNIA, DIVISION OF HIGHWAYS, 128 SOUTH SPRING STREET.

COUNTY OF LOS ANGELES, CALIFORNIA

APPROVED, JOHN A. LAMME, COUNTY ENGINEER

APPROVED, A. M. BAWN, CHIEF ENGINEER

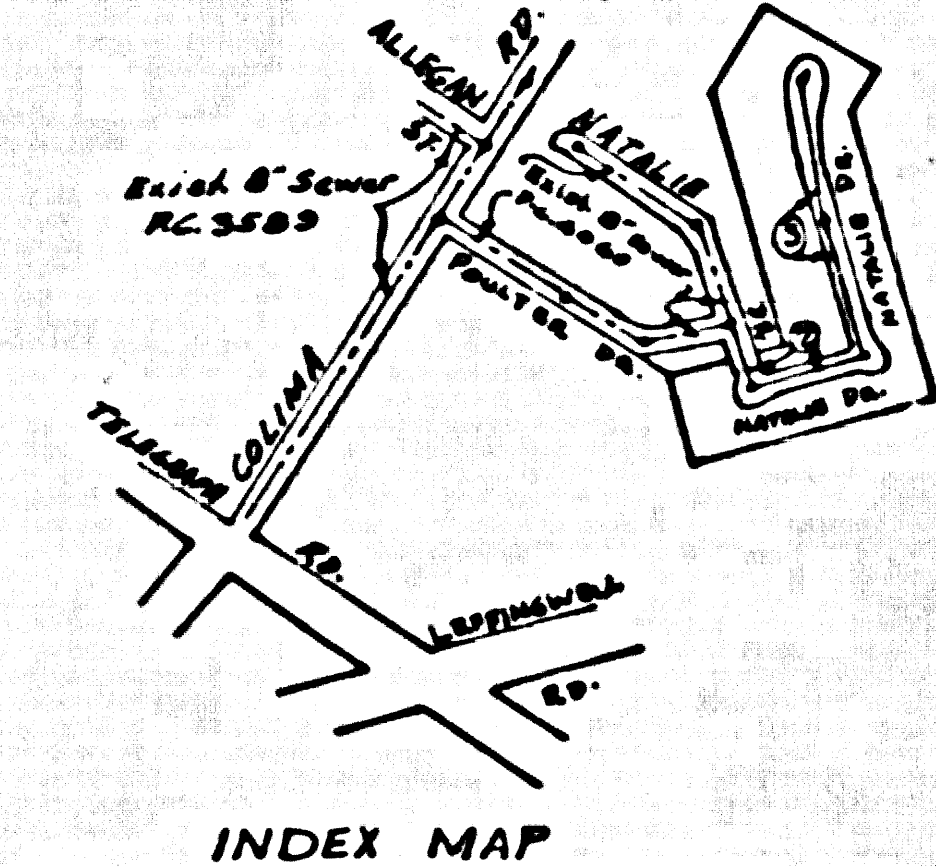
BY *J. H. Hughes* (Seal) COUNTY ENGINEER

BY *A. M. Bawn* (Seal) CHIEF ENGINEER

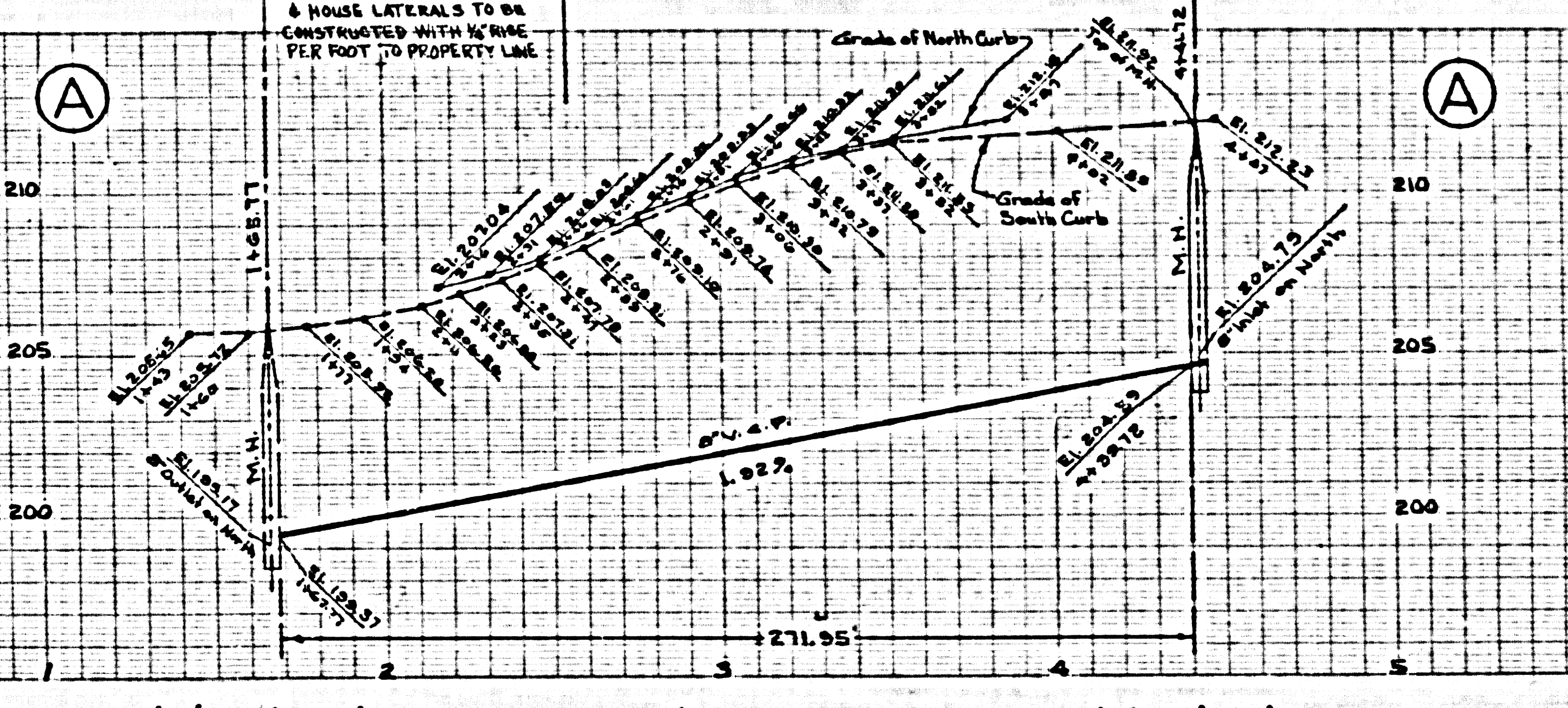
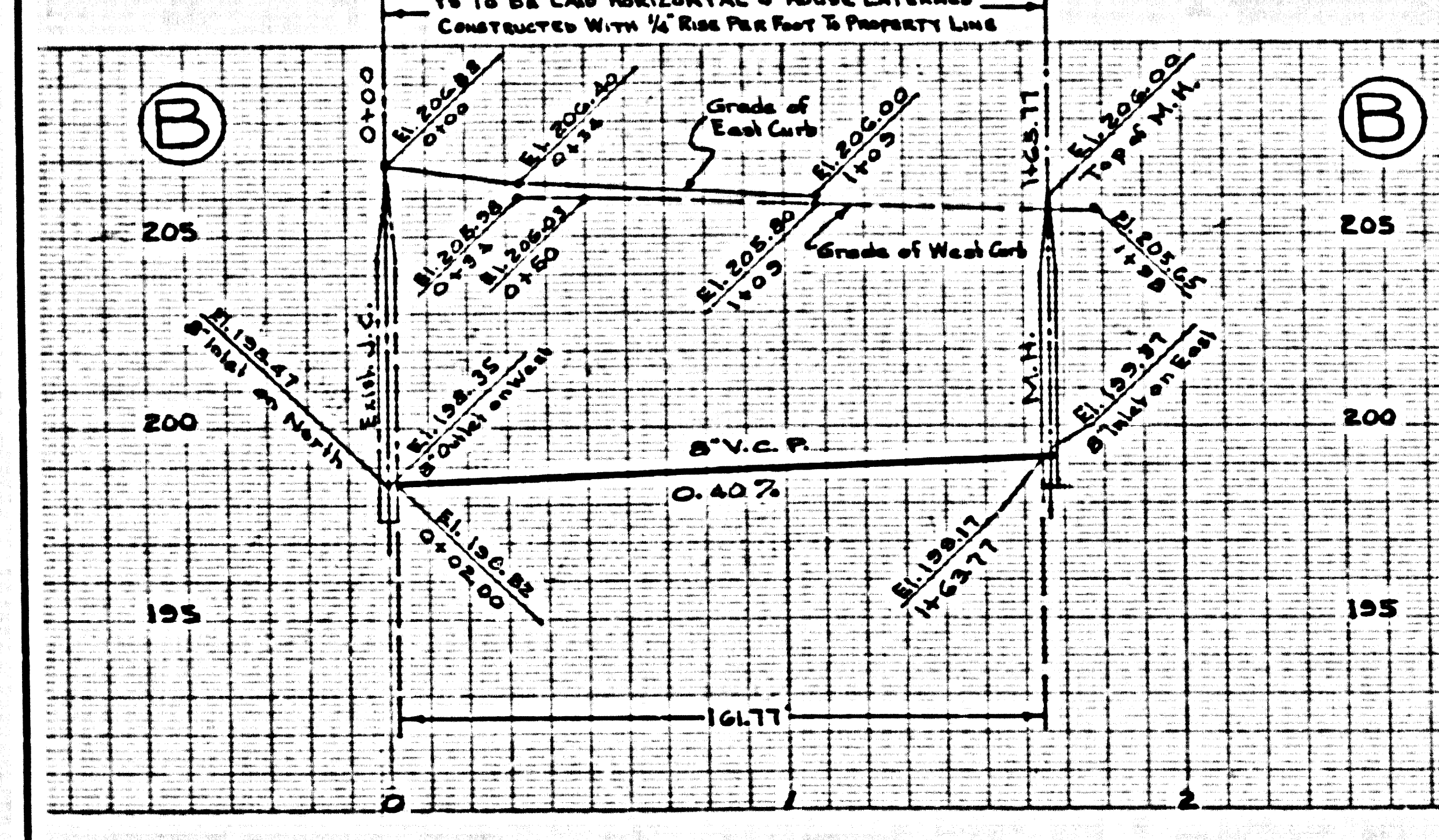
CHECKED BY *Ex. Oida* 9-22-58

OFFICE OF COUNTY ENGINEER, REG. C. E. NO. 3406

Submitted by: *John A. Lamm* 9-19-58
 LOS ANGELES REGIONAL ENGINEER, REG. C. E. NO. 3871



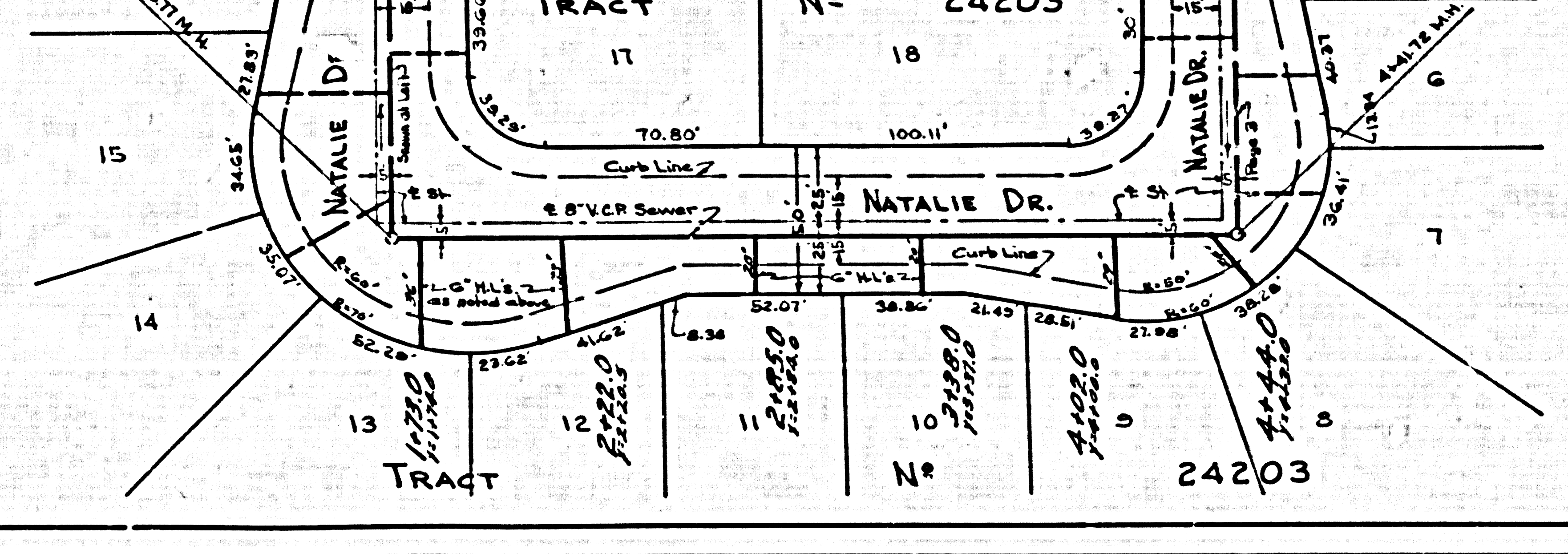
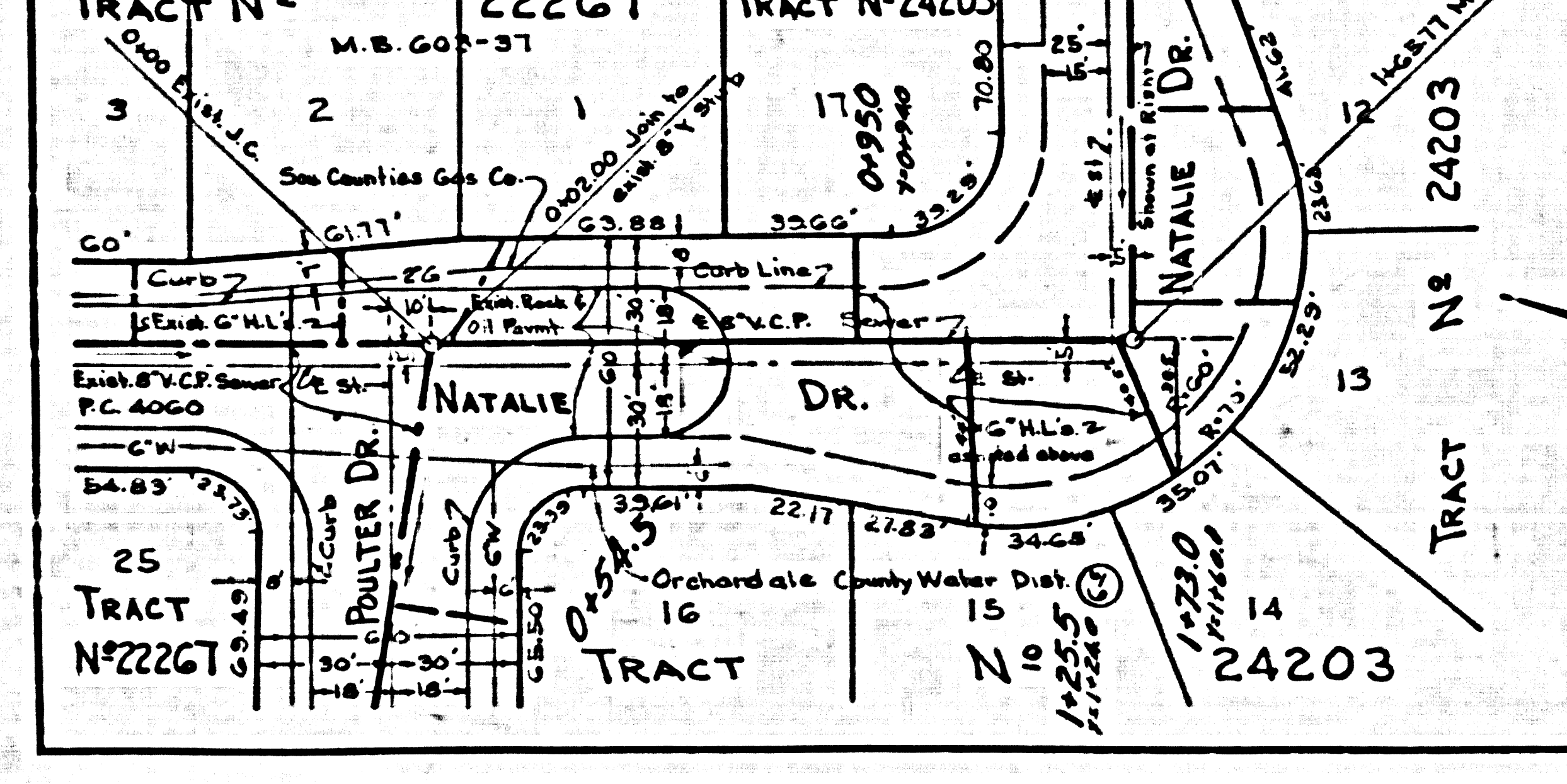
INDEX MAP
 TRACT No 24203 P.C. 4828
 Scale 1"=600'



P.C. 4828 PAGE 2

26,707

No Charge For
 CONNECTIONS



Rel 7-8-58

26,708

NO CHARGE FOR CONNECTIONS

