

LENNOX BLDG. DIST. NO. 7

PROFILE ALIGNMENT AND GRADE OF  
**SANITARY SEWER** **P.C. 4831**  
 TO BE CONSTRUCTED IN **PAGE 1**

**IMPERIAL HIGHWAY CROSSING**

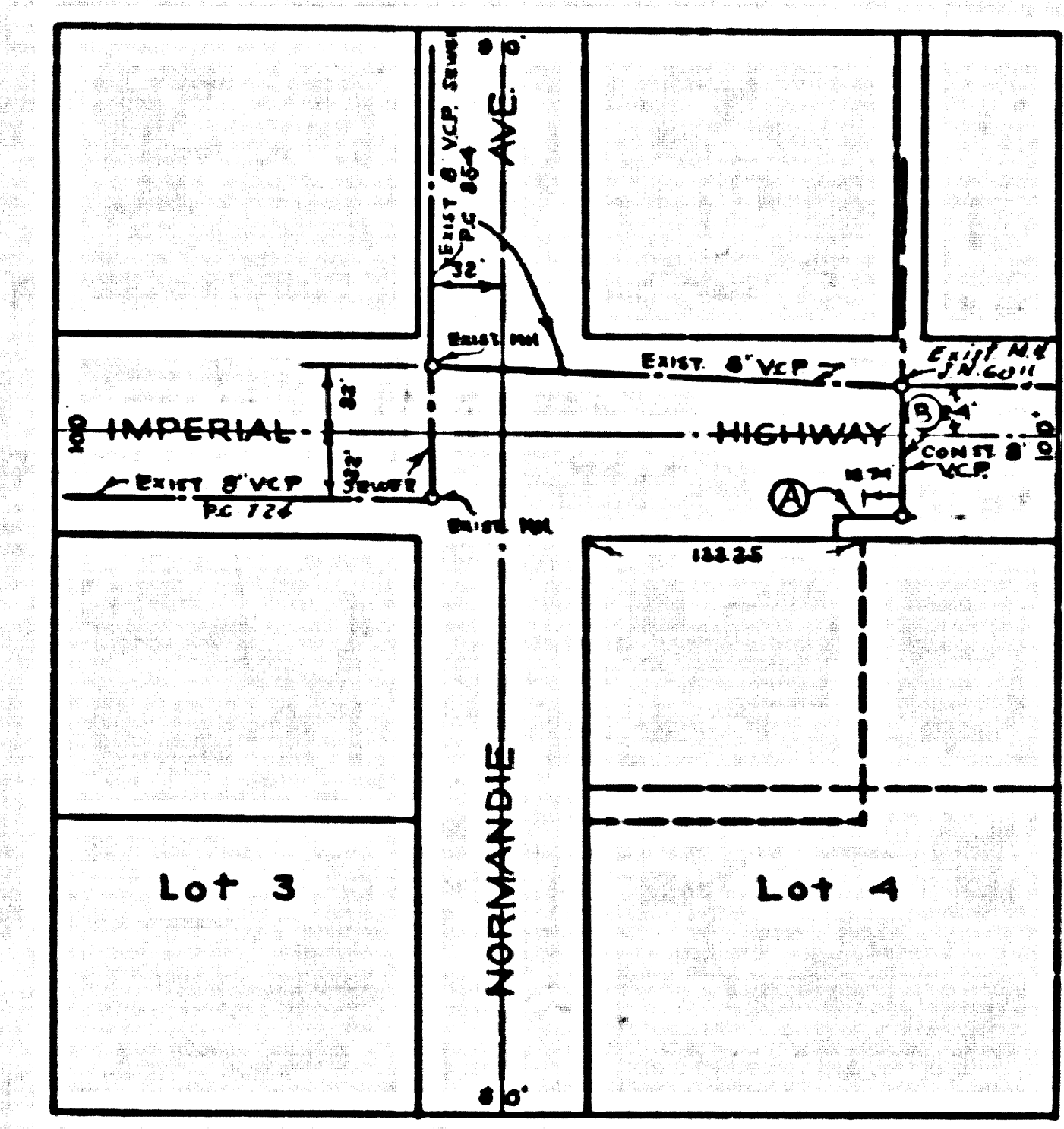
**PRIVATE CONTRACT NO. 4831**

W.S. 26  
 1 SHEET, 2 PAGES  
 SCALE: VERT. 1" = 4' HORIZ. 1" = 40' MAY, 1958  
 PREPARED IN THE OFFICES OF

*[Signature]*  
 REG. C. E. NO. 3226  
 FOR LEGEND SEE PLAN NO. S-A-64

- NOTE:**  
 PROFILE STAGES ON THE FRONTY LINE OR PROPERTY LINE PRODUCED AT RIGHT ANGLES TO THE SEWER LINE AT THE CURB LINE OF EACH PARCEL.  
 NO REPRESENTATIVE OF THE COUNTY ENGINEER WILL SURVEY OR LAYOUT ANY PORTION OF THE WORK.  
 THE OWNER OR HIS AUTHORIZED REPRESENTATIVE SHALL FURNISH THE COUNTY ENGINEER WITH GRADE SHEETS AND STATIONING PLANS FOR ALL HOUSE LATERALS AND V BRANCHES AND SHALL FURNISH STAGES FOR THEM AT THEIR PROPER LOCATIONS WITH STATIONING PLANS NUMBER AND CHANGE IN LOCATION SHALL BE REQUESTED BY WRITING BY THE OWNER OR HIS REPRESENTATIVE.  
 NO REVISIONS SHALL BE MADE BY THESE PLANS WITHOUT THE APPROVAL OF THE COUNTY ENGINEER.  
 1. USE STANDARD MANHOLE FRAMES AND COVERS, S.A-117, EXCEPT AS NOTED.  
 2. USE STANDARD STRENGTH PIPE EXCEPT AS NOTED.  
 3. USE CENTRE BICUTS, OR "WOODS-LOCK" OR "SPREAD-SEAL" TYPE AT V.C.P. JOINTS PER SPEC'S, SEC. 54-117.  
 4. RESURFACE ALL TRENCH WITHIN PAVED AREA TO MEET L.A. COUNTY ROAD DEPT., OR CALIF. STATE HIGHWAY DEPT. REQUIREMENTS IN ACCORDANCE WITH PERMITS.  
 5. SHOW CURB CUTS AT POINTS OF INTERFERENCE WITH POLES, GAS LINES, ETC. PER SPEC'S.  
 6. HOUSE LATERALS TO BE CONSTRUCTED WITH INVERTS AT PROPERTY LINE 6 FEET BELOW CURB GRADE EXCEPT AS NOTED.  
 7. ALL STRUCTURES SHALL BE BRICK SEWER STRUCTURES, S.A-124, EXCEPT AS NOTED.  
 8. FOR ALLOWABLE SIZING TEST USE FORMULA NO. 1 SPEC'S, SEC. 54.  
 9. MANHOLE TOPS IN UNIMPROVED RIGHTS-OF-WAY TO BE 6" ABOVE FINISHED GRADE.  
 10. THE PRIVATE ENGINEER SHALL FURNISH THE HOUSE LATERAL DEPTH AT THE PROPERTY LINE BELOW THE TOP OF CURB ELEVATION FOR EACH HOUSE LATERAL ON THE GRADE SHEET.  
 11. THE CONTRACTOR SHALL NOTIFY THE CONSTRUCTION & STORM DRAIN DIVISION BY TELEPHONE, MARION 9-4741 EXT. 362, AT LEAST 24 HOURS BEFORE STARTING ANY WORK UNDER THIS CONTRACT.

B.M. - N.Y. 4279  
 I.A. CIV. RD. B.M. No. 1  
 IN THE S.W. 1/4 OF B.C.R. SECTION 216  
 T. 11 N. R. 12 E. S. 17  
 COUNTY OF LOS ANGELES, CALIF.  
 County Eng. Precise 201784 1955 Adj.



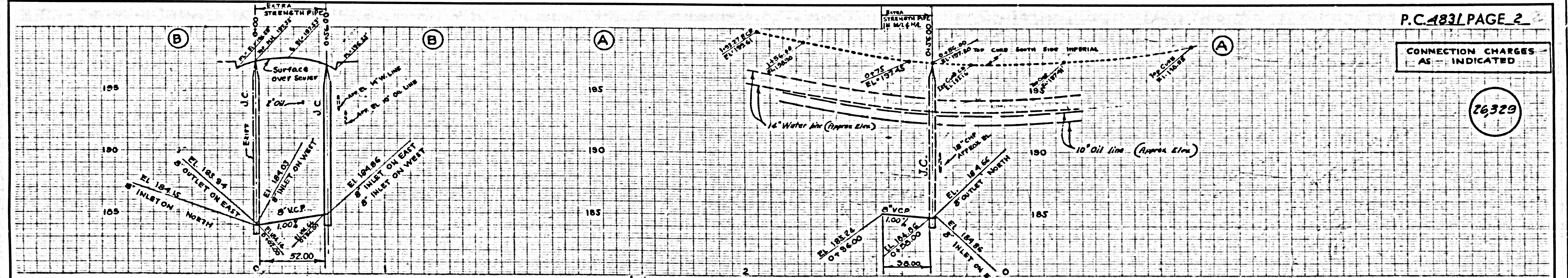
INDEX MAP  
 SCALE: 1" = 100'

CONNECTION CHARGES AS INDICATED  
 \$1000 PER FRONT FT.

**NOTE:**  
 GRADES TO WHICH THIS IMPROVEMENT IS TO BE CONSTRUCTED ARE SHOWN ON PLANS AND PROFILES. GRADE POINTS FOR TOP OF CURBS, CENTER LINE OF STREETS, OR CENTER LINE OF ALLEYS ARE SHOWN BY CIRCLES ON PROFILES AT ALL POINTS BETWEEN ESTABLISHED POINTS THE GRADE SHALL BE ESTABLISHED SO AS TO CONFORM TO A STRAIGHT LINE BETWEEN SAID ESTABLISHED POINTS.  
 ELEVATIONS ARE IN FEET ABOVE U.S.C. & G.S. MEAN SEA LEVEL - DATUM OF 1929.  
 THIS DRAWING AND THE DATA HEREON ARE HEREBY MADE A PART OF THE RECORD DRAWING.  
 WORK SHALL BE CONSTRUCTED ACCORDING TO SPECIFICATIONS ON FILE IN THE OFFICE OF THE COUNTY ENGINEER AND PLANS AS PROVIDED BY THE COUNTY ENGINEER.  
 BEFORE WORK CAN BE STARTED, THE CONTRACTOR MUST OBTAIN A PERMIT TO OCCUPY IN COUNTY STREETS FROM THE L.A. COUNTY ROAD DEPT. WITHOUT THIS PERMIT NO WORK SHALL BE DONE UNDER ANY AMERICAN ROAD BLDG. CO. BROADWAY SUPPLEMENT TO COVER THE COST OF CONSTRUCTION INSPECTOR'S AND RECORD PLANS.  
 APPROVAL OF THIS PLAN BY THE COUNTY OF LOS ANGELES DOES NOT CONSTITUTE A REPRESENTATION AS TO THE ACCURACY OF THE LOCATION OF OR THE EXISTENCE OR NON-EXISTENCE OF ANY UNDEVELOPED UTILITY PIPE, OR STRUCTURE WITHIN THE LIMITS OF THIS PROJECT. THIS NOTE APPLIES TO ALL PAGES.  
 IF WORK IS TO BE DONE IN A STATE HIGHWAY, A PERMIT MUST BE OBTAINED FROM THE STATE OF CALIFORNIA, DIVISION OF HIGHWAYS, 120 SOUTH SPRING STREET.

COUNTY OF LOS ANGELES, CALIFORNIA  
 APPROVED, JOHN A. LAMBE, COUNTY ENGINEER  
 APPROVED, A. M. RAWN, CHIEF ENGINEER  
 BY *[Signature]* BY *[Signature]*  
 SANITATION ENGINEER OFFICE ENGINEER  
 CHECKED BY *[Signature]*  
 OFFICE OF COUNTY ENGINEER, 808, C. P. NO. 2466

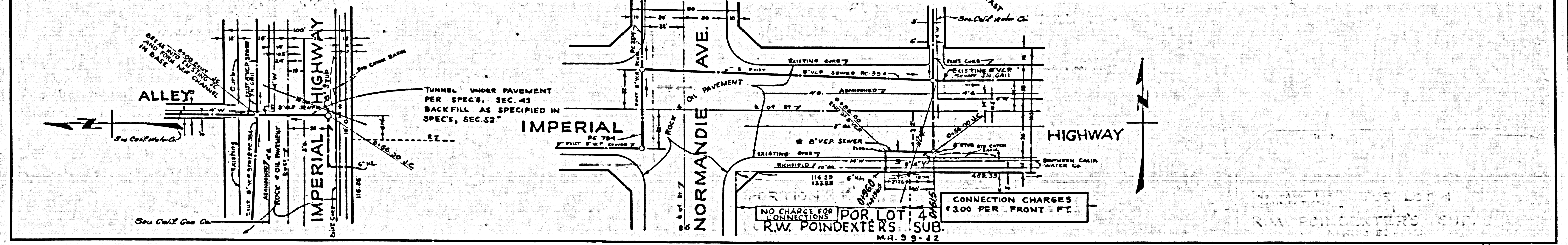
APPROVED BY  
 INDUSTRIAL WASTE DIVISION  
 BY *[Signature]* DATE 7/14/58



P.C. 4831 PAGE 2

CONNECTION CHARGES AS INDICATED

26,320



NO CHARGE FOR CONNECTIONS  
 FOR LOT 4  
 R.W. POINDEXTER'S SUB.  
 M.R. 9-9-52

CONNECTION CHARGES \$300 PER FRONT FT.

INDUSTRIAL WASTE DIVISION  
 R.W. POINDEXTER'S SUB.  
 DATE 7-16-58