

**PUENTE BLDG. DIST. NO. 2**

PROFILE ALIGNMENT AND GRADE OF **P.C. 4832**  
**SANITARY SEWERS** PAGE 1  
 TO BE CONSTRUCTED IN

**TRACT No 21404** (26,235)

**PRIVATE CONTRACT NO. 4832**

W.S. 30

4 SHEETS, 7 PAGES  
 SCALE: VERT. 1"=4' HORIZ. 1"=40' JUNE, 1958

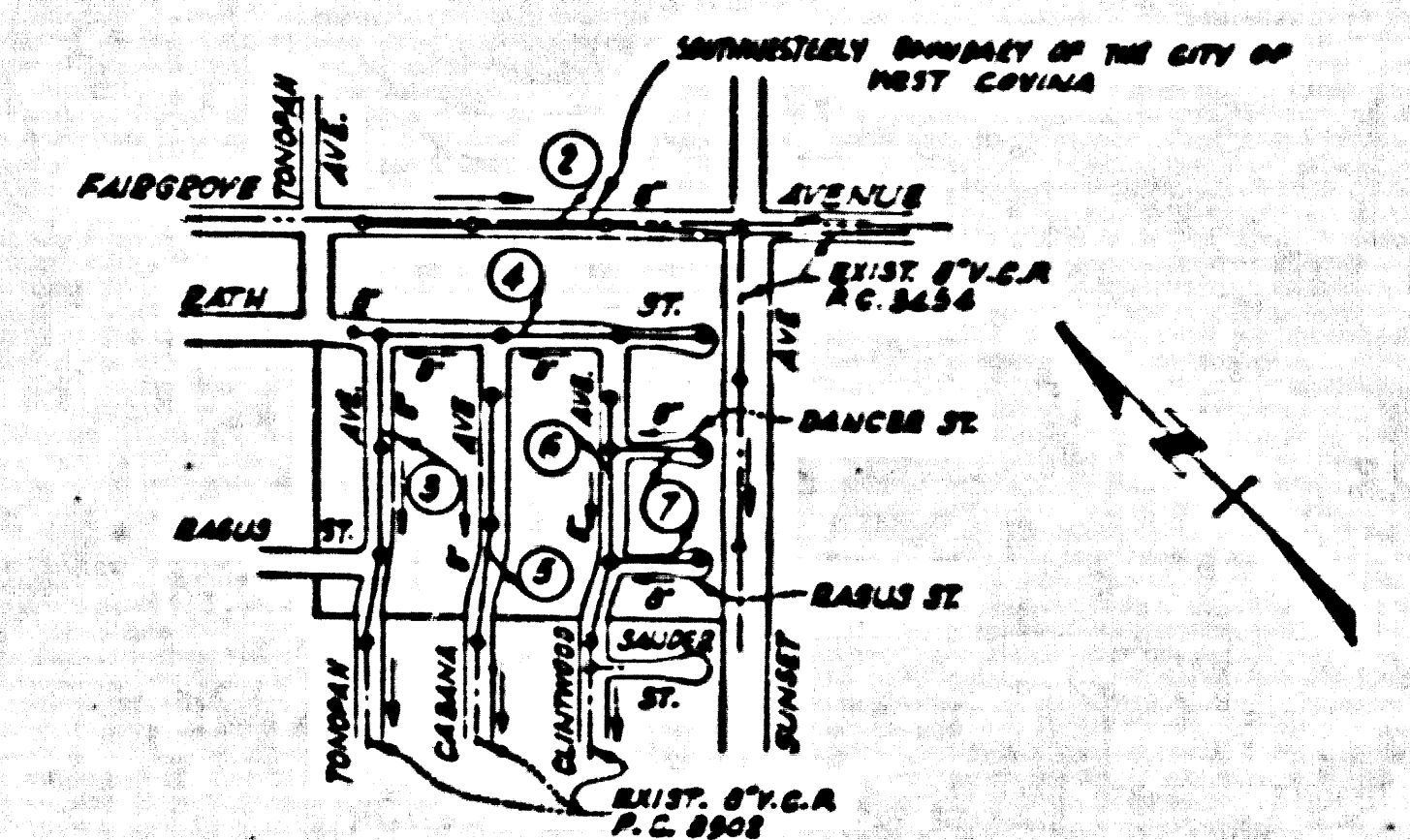
PREPARED BY THE OFFICES OF  
**A. RICHARD BROWN, JR.**  
 7632 COMMONWEALTH AVE., BUENA PARK, CALIF.  
 REG. C. E. NO. 2137

FOR LEGEND SEE PLAN NO. S-A-64

**BENCHMARK SG.1115 ELEV.=318.482**  
 L. & T. in S.W. corner of foundation slab of  
 oil drum stand, 1/2 mi. South of E of Elliot  
 Avenue & 1/2 mi. East of Orange Avenue  
 at House No. 14316, Puente Quad.  
 NOTE:  
 County Surveyors precise 1955 adjustment -  
 Elevation = 318.304. Subtract 0.178 from  
 all elevations hereon to convert to  
 1955 adjustment.

- NOTES:
1. PROFILE STARTS ON THE PROPERTY LINE OR PROPERTY LINES PRODUCED AT RIGHT ANGLES TO THE SEWER LINE AT THE CENTER LINE OF EACH MANHOLE.
  2. NO REPRESENTATIVE OF THE COUNTY ENGINEER WILL SURVEY OR LAY OUT ANY PORTION OF THE WORK.
  3. THE OWNER OR HIS AUTHORIZED REPRESENTATIVE SHALL FURNISH THE COUNTY ENGINEER WITH GRADE SHEETS AND STATIONING FOR ALL HOUSE LATERALS AND T-BRANCHES AND SHALL PROVIDE STAKES FOR THEM AT THESE PROPOSED LOCATIONS WITH STATIONING PLAINLY MARKED. ANY CHANGE IN LOCATION SHALL BE REQUESTED IN WRITING BY THE OWNER OR HIS REPRESENTATIVE.
  4. THE PRIVATE ENGINEER SHALL FURNISH THE HOUSE LATERAL DEPTH AT THE PROPERTY LINE BELOW THE TOP OF CURB ELEVATION FOR EACH HOUSE LATERAL ON THE GRADE SHEET.
  5. NO REVISIONS SHALL BE MADE IN THESE PLANS WITHOUT THE APPROVAL OF THE COUNTY ENGINEER.
  6. USE STANDARD MANHOLE FRAME AND COVERS, 2-0-17, EXCEPT AS NOTED.
  7. USE STANDARD STRENGTH PIPE EXCEPT AS NOTED.
  8. USE LIGHTER PORTAL OR "WEDGE-LOCK" OR "SPIND-SEAL" FOR ALL V.C.P. JOINTS PER SPEC., SECS. 28 & 29.
  9. RESURFACE ALL TRUCKS WITHIN PAVED AREA TO MEET L.A. COUNTY ROAD DEPT. OR CALIF. STATE HIGHWAY REQUIREMENTS IN ACCORDANCE WITH PERMITS.
  10. INCASE FOUR FEET OF SEWER AT POINTS OF INTERFERENCE WITH POLES, CASE NO. 2-0-172.
  11. HOUSE LATERALS TO BE CONSTRUCTED WITH INVERTS AT PROPERTY LINE - 6" BELOW CURB GRADE EXCEPT AS NOTED.
  12. ALL STRUCTURES SHALL BE BRICK SEWER STRUCTURES, 2-0-194, EXCEPT AS NOTED.
  13. FOR ALLOWABLE LEAKAGE TEST USE FORMULA NO. 1, SPEC., SEC. 24.
  14. MANHOLE TOPS IN UNIMPROVED RIGHTS-OF-WAY TO BE SIX INCHES ABOVE FINISHED GRADE.
  15. THE CONTRACTOR SHALL NOTIFY THE CONSTRUCTION & STORM DRAIN DIVISION BY TELEPHONE, MARSHON 6-0-07, EXT. 248, AT LEAST TWENTY FOUR HOURS BEFORE STARTING ANY WORK UNDER THIS CONTRACT.

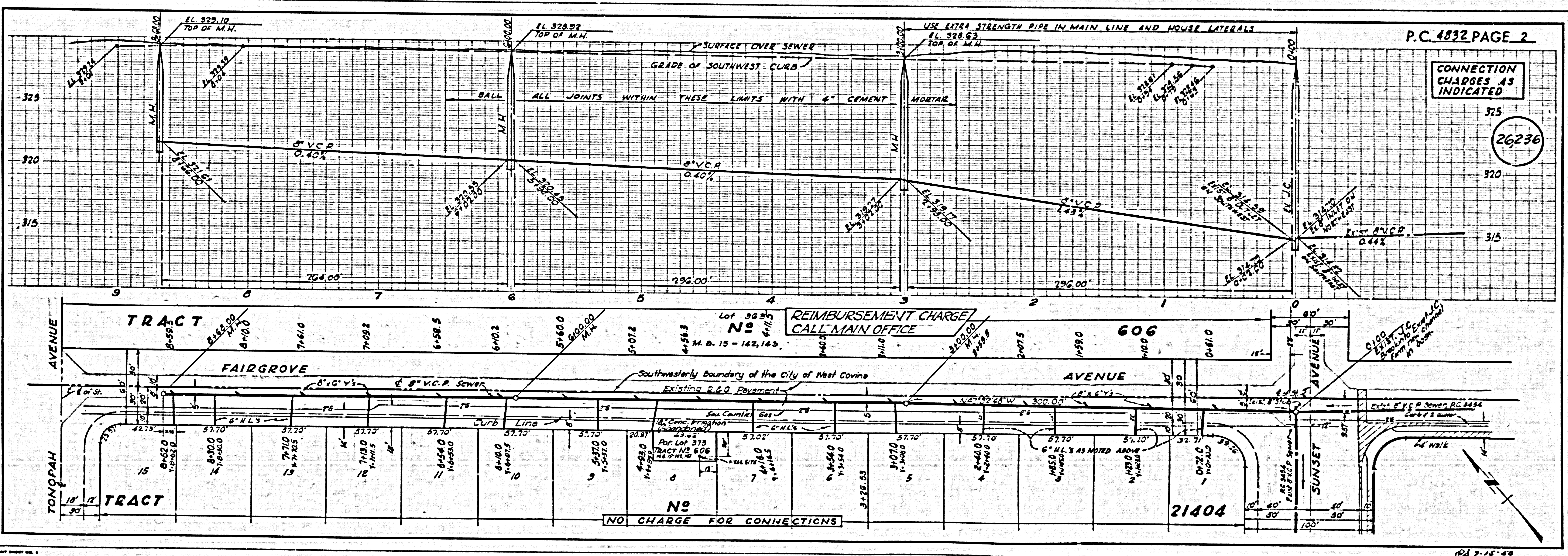
**CONNECTION CHARGES AS INDICATED**  
*Edwin Caldwell 7-22-58*



**INDEX MAP**  
 SCALE: 1"=400'  
**TRACT No 21404**  
 P.C. 4832

NOTES:  
 GRADES TO WHICH THIS IMPROVEMENT IS TO BE CONSTRUCTED ARE SHOWN ON PLANS AND PROFILE GRADE POINTS FOR TOP OF CURB, CENTER LINE OF STREETS, OR CENTER LINE OF ALLEYS ARE SHOWN BY CIRCLES IN PROFILES. AT ALL POINTS BETWEEN DESIGNATED POINTS THE GRADE SHALL BE ESTABLISHED SO AS TO COMPOSE TO A STRAIGHT LINE DRAWN BETWEEN SAID DESIGNATED POINTS.  
 ELEVATIONS ARE IN FEET ABOVE U.S.C. & G.S. SEA LEVEL DATUM OF 1929.  
 THE BEARING AND THE DATA HEREON ARE HEREBY MADE A PART OF THE SPECIFICATIONS.  
 BEFORE WORK CAN BE STARTED, THE CONTRACTOR MUST OBTAIN A PERMIT TO RECLAIM IN COUNTY STREETS FROM THE L.A. COUNTY ROAD DEPT., DISTRICT OFFICE NO. 12, AND MAKE A REPORT WITH THE COUNTY ENGINEER, ROOM 324 PAN AM BLDG., 324 SO. BROADWAY, SUFFICIENT TO COVER THE COST OF CONSTRUCTION INSPECTION AND RECORD PLANS.  
 APPROVAL OF THE PLANS BY THE COUNTY OF LOS ANGELES DOES NOT CONSTITUTE A REPRESENTATION AS TO THE ACCURACY OR THE LOCATION OF THE EXISTENCE OR NON-EXISTENCE OF ANY UNDERGROUND UTILITY PIPE, OR STRUCTURE WITHIN THE RIGHTS-OF-WAY OF THIS PROJECT. THIS NOTICE APPLIES TO ALL PARTS OF THE PROJECT.  
 IF WORK IS TO BE DONE IN A STATE HIGHWAY, A PERMIT MUST BE OBTAINED FROM THE STATE OF CALIFORNIA, DIVISION OF HIGHWAYS, 128 SOUTH SPRING STREET.

**COUNTY OF LOS ANGELES, CALIFORNIA**  
 APPROVED, JOHN A. LAMBE, COUNTY ENGINEER  
 APPROVED, A. M. BAWN, CHIEF ENGINEER  
 BY *Edwin Caldwell* AS ST. SANITATION ENGINEER BY *J. H. Hoffmann* OFFICE ENGINEER  
 CHECKED BY *W. C. White* 7-15-58  
 OFFICE OF COUNTY ENGINEER, REG. C. E. NO. 2166  
 SUBMITTED *N. F. Brannan*  
 SAN GABRIEL VALLEY REGIONAL ENGINEER



**CONNECTION CHARGES AS INDICATED**  
 (26,236)

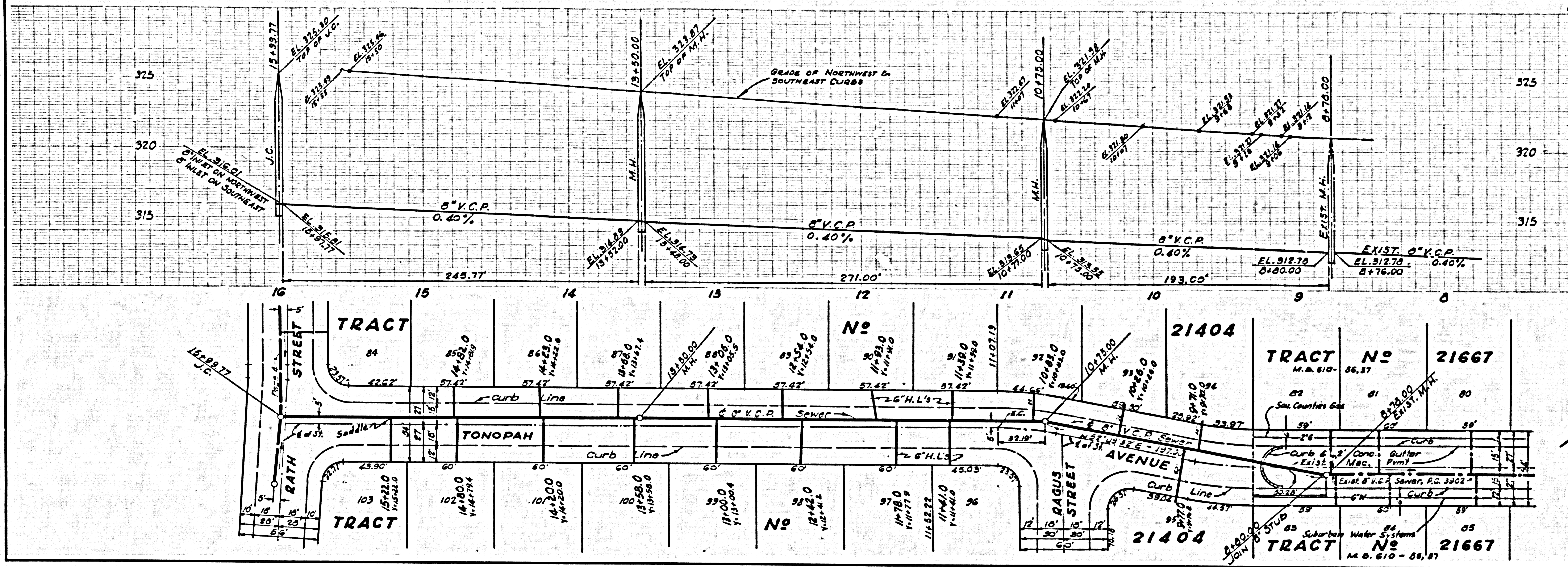
P.C. 4832 PAGE 2

**REIMBURSEMENT CHARGE CALL MAIN OFFICE**

**NO CHARGE FOR CONNECTIONS**

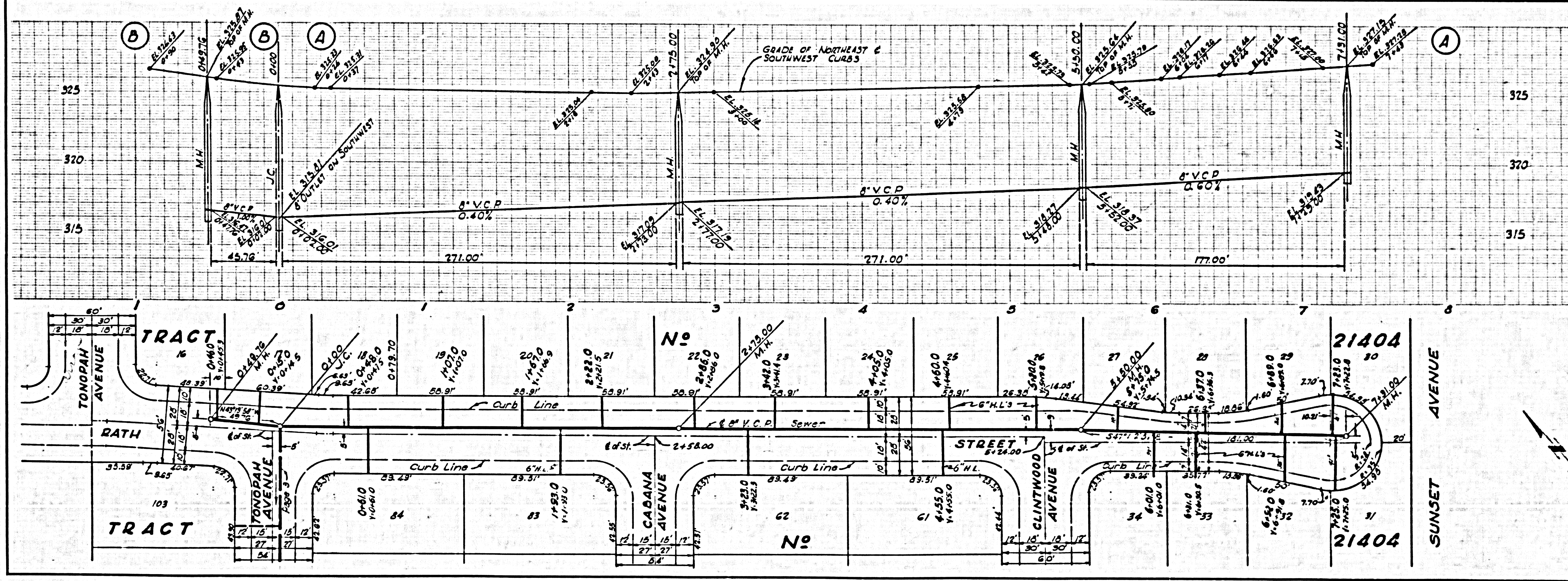
NO CHARGE FOR CONNECTIONS

26237



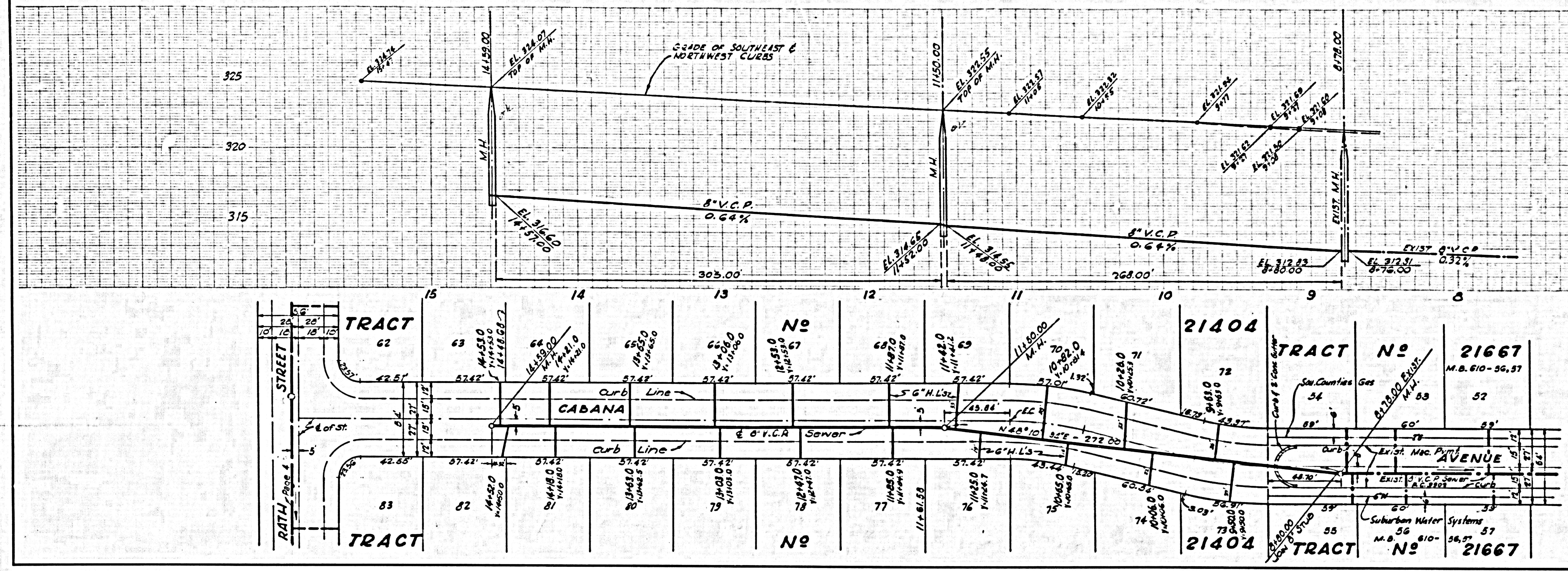
NO CHARGE FOR CONNECTIONS

26238



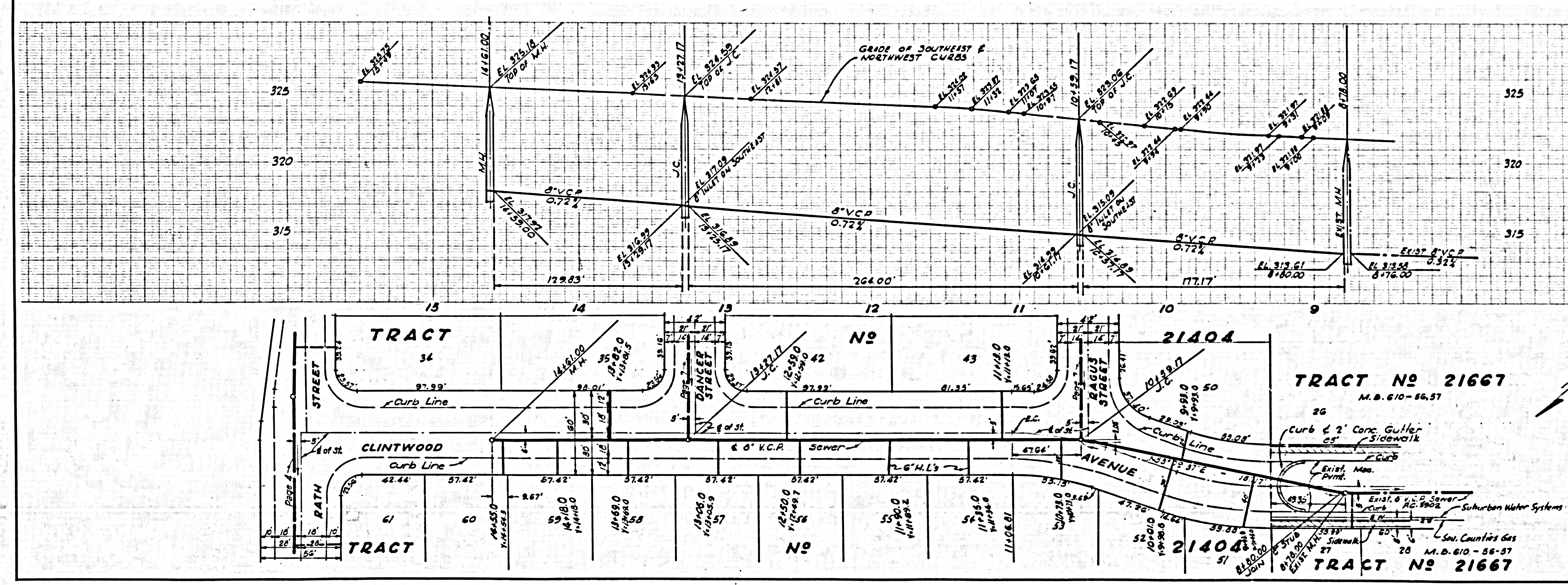
NO CHARGE FOR CONNECTIONS

26239



NO CHARGE FOR CONNECTIONS

26240



NO CHARGE FOR CONNECTIONS

26241

