

TEMPLE CITY BLDG. DIST. NO. 5

PROFILE ALIGNMENT AND GRADE OF **P.C. 4841**
SANITARY SEWERS PAGE **1**
 TO BE CONSTRUCTED IN
SANITARY SEWER EASEMENT
 IN LOT 11, TRACT No 11248

PRIVATE CONTRACT NO. 4841
 W.S. 46
 1 SHEET, 2 PAGES (26,200)

SCALE: VERT. 1"=4' HORIZ. 1"=40' JULY, 1958

PREPARED BY THE OFFICES OF
A. RICHARD BROWN JR.
 7632 COMMONWEALTH AVE., BUENA PARK, CALIF.
 PHONE: LA 4-2838
 REG. C. E. NO. 3124

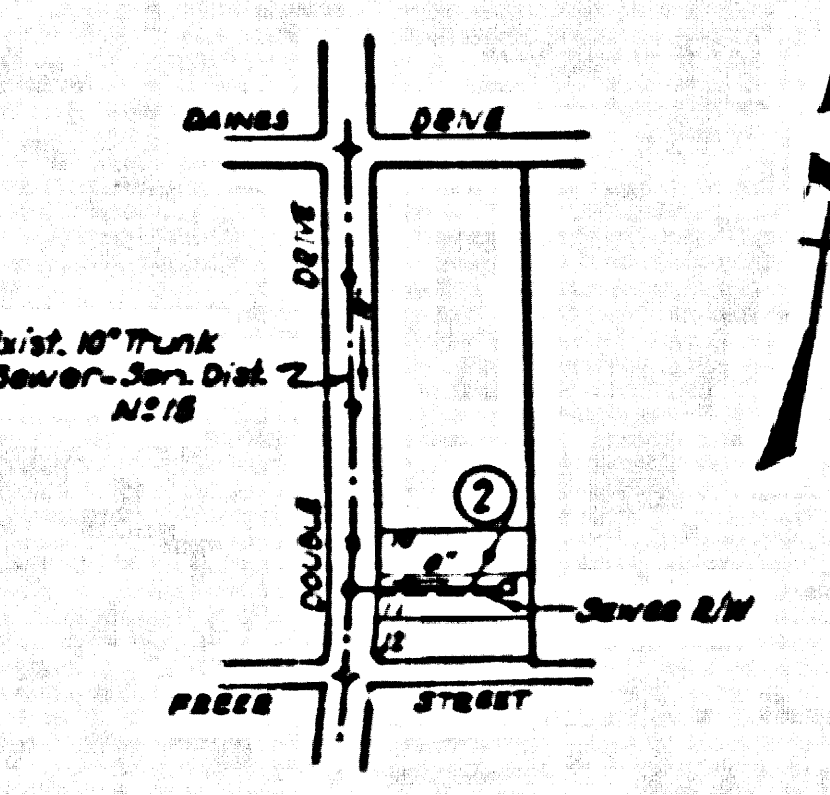
FOR LEGEND SEE PLAN NO. S-A-64

BENCH MARK S.G. 957
 L. & T. in east curb Tyler Ave. 1' south
 curb return, S.E. corner Tyler Ave. &
 Milburn St. (Arcadia's Quads).
 Elev. = 324.224, 1955 Adj. Co. Surv. Precise.

Flags breaking into any existing structure
 and before final acceptance of this work,
 County Sanitation District should be notified
 in order that required inspection may be made.

**NO CHARGE
 FOR CONNECTIONS**
 S. M. Caldwell 8-12-58

- NOTES
1. PROVIDE STAKES ON THE PROPERTY LINE OR PROPERTY LINES PROPERLY LOCATED AT RIGHT ANGLES TO THE SEWER LINE AT THE CENTER LINE OF EACH MANHOLE.
 2. NO REPRESENTATIVE OF THE COUNTY ENGINEER WILL SURVEY OR LAY OUT ANY PORTION OF THE WORK.
 3. THE OWNER OR HIS AUTHORIZED REPRESENTATIVE SHALL FURNISH THE COUNTY ENGINEER WITH GRADE SHEETS AND STATIONING FOR ALL HOUSE LATERALS AND Y BRANCHES AND SHALL PROVIDE STAKES FOR THEM AT THEIR PROPER LOCATIONS WITH STATIONING PLAINLY MARKED. ANY CHANGE IN LOCATION SHALL BE REQUESTED IN WRITING BY THE OWNER OR HIS REPRESENTATIVE.
 4. THE PRIVATE ENGINEER SHALL FURNISH THE HOUSE LATERAL IN PIN AT THE PROPERTY LINE BELOW THE TOP OF CURB ELEVATION FOR EACH HOUSE LATERAL ON THE GRADE SHEET.
 5. NO REVISIONS SHALL BE MADE IN THESE PLANS WITHOUT THE APPROVAL OF THE COUNTY ENGINEER.
 6. USE STANDARD MANHOLE FRAMES AND COVERS, S-117, EXCEPT AS NOTED.
 7. USE STANDARD STRENGTH PIPE.
 8. USE CEMENT MORTAR OR "WEDGE-LOCK" OR "SPREAD-BEAT" FOR ALL V.C.P. JOINTS PER SPEC. SECS. 36 & 40.
 9. RESURFACE ALL TRANCH WITHIN PAVED AREA TO MEET L.A. COUNTY ROAD DEPT. OR CALIF. STATE HIGHWAY REQUIREMENTS IN ACCORDANCE WITH PERMITS.
 10. INCREASE FOUR FEET OF SEWER AT POINTS OF INTERFERENCE WITH POLES, CASE NO. S-117, EXCEPT AS NOTED.
 11. ALL STRUCTURES SHALL BE BRICK SEWER STRUCTURES, S-104, EXCEPT AS NOTED.
 12. FOR ALLOWABLE LEAKAGE TEST USE FORMULA NO. 1, SPEC. SEC. 34.
 13. MANHOLE TOPS IN UNIMPROVED HIGHWAYS OR WAYS TO BE LEVEL WITH FINISHED GRADE.
 14. THE CONTRACTOR SHALL NOTIFY THE CONSTRUCTION & ROAD BUREAU OFFICE BY TELEPHONE, HARBISON 5-6747, EXT. 342, AT LEAST TWENTY-FOUR HOURS BEFORE STARTING ANY WORK UNDER THIS CONTRACT.



INDEX MAP
 SCALE: 1"=600'
 P.C. 4841

NOTES

GRADES TO WHICH THE IMPROVEMENT IS TO BE CONSTRUCTED AND SHOWN ON PLANS AND PROFILES. GRADE POINTS FOR TOP OF CURBS, CENTER LINE OF STREETS, OR CENTER LINE OF ALLEYS ARE SHOWN BY CIRCLES ON PROFILES AT ALL POINTS BETWEEN DESIGNATED POINTS THE GRADE SHALL BE ESTABLISHED SO AS TO CONFORM TO A STRAIGHT LINE DRAWN BETWEEN SAID DESIGNATED POINTS.

ELEVATIONS ARE IN FEET ABOVE M.S.C. & G.S. SEA LEVEL DATUM OF 1929.

THE DRAWING AND THE DATA HEREON ARE HEREBY MADE A PART OF THE SPECIFICATIONS.

WORK SHALL BE CONSTRUCTED ACCORDING TO SPECIFICATIONS ON FILE IN THE OFFICE OF THE COUNTY ENGINEER AND SHALL BE INSPECTED ONLY IN THE PRESENCE OF THE COUNTY ENGINEER.

BEFORE WORK CAN BE STARTED, THE CONTRACTOR MUST OBTAIN A PERMIT TO EXCAVATE IN COUNTY STREETS FROM THE COUNTY ROAD DEPT., DISTRICT OFFICE NO. 1, AND MAKE A DEPOSIT WITH THE COUNTY ENGINEER, ROOM 324 PARK AVENUE, BUILDING 218 SO. BROADWAY SUFFICIENT TO COVER THE COST OF CONSTRUCTION INSPECTION AND RECORD PLANS.

APPROVAL OF THE PLAN BY THE COUNTY OF LOS ANGELES DOES NOT CONSTITUTE A REPRESENTATION AS TO THE ACCURACY OF THE LOCATION OF OR THE EXISTENCE OR NON-EXISTENCE OF ANY UNDERGROUND UTILITY PIPE, OR STRUCTURE WITHIN THE LIMITS OF THE PROJECT THIS NOTE APPLIES TO ALL PAGES.

IF WORK IS TO BE DONE ON A STATE HIGHWAY, A PERMIT MUST BE OBTAINED FROM THE STATE OF CALIFORNIA, DIVISION OF HIGHWAYS, 128 SOUTH SPRING STREET.

COUNTY OF LOS ANGELES, CALIFORNIA

APPROVED, JOHN A. LAMBE, COUNTY ENGINEER
 APPROVED, A. M. BAWN, CHIEF ENGINEER
 CO. SAN. DIST. NO. 18

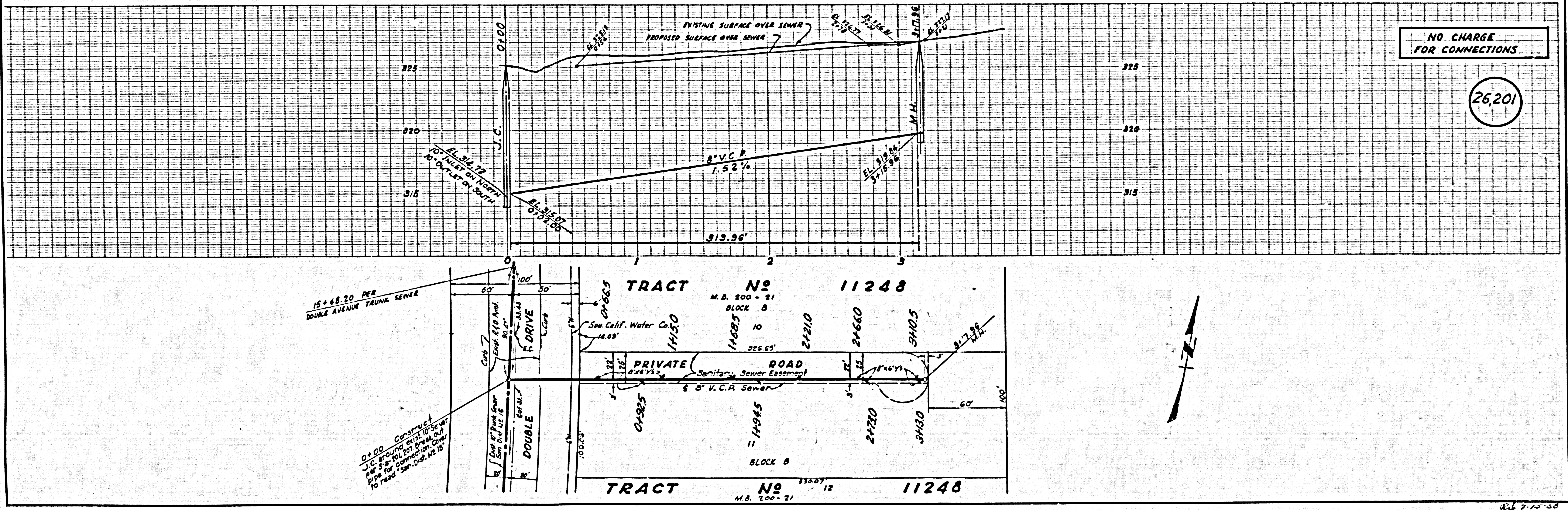
BY *[Signature]* SANITATION ENGINEER BY *[Signature]* OFFICE ENGINEER

CHECKED BY *[Signature]* 8-12-58
 OFFICE OF COUNTY ENGINEER, S.E.C. & NO. 3406

SUBMITTED *[Signature]*
 SAN GABRIEL VALLEY REGIONAL ENGINEER

P.C. 4841 PAGE 2

**NO CHARGE
 FOR CONNECTIONS**
 (26,201)



04.00 Construct
 J.C. showing elev. to sewer
 pipe for connections. Over
 to read San. Dist. 12-15

8-17-58