

Trim Line

B. M. AE-415 El. 1304.309 F.B. 1568-65
Lincoln Ave of Loma Alta Dr. at intersection
Geo. Man. Mt. Lows E-12 in H.H.

ALTADENA BUILDING DISTRICT NO. 3

CAPITAL PROJECT NO 8835.10

PROFILE, ALIGNMENT AND GRADE OF
SANITARY SEWERS

26,891

TO BE CONSTRUCTED IN
LINCOLN AVE.

P. C. 4847

PAGE 1 OF 2 PAGES

SCALE 1" = 10' H.
1" = 40' V.

AUGUST 1958

COUNTY OF LOS ANGELES, CALIFORNIA

JOHN A. LAMBE

COUNTY ENGINEER

SUBMITTED *H. J. Sanchez*
ASSISTANT SANITATION ENGINEER

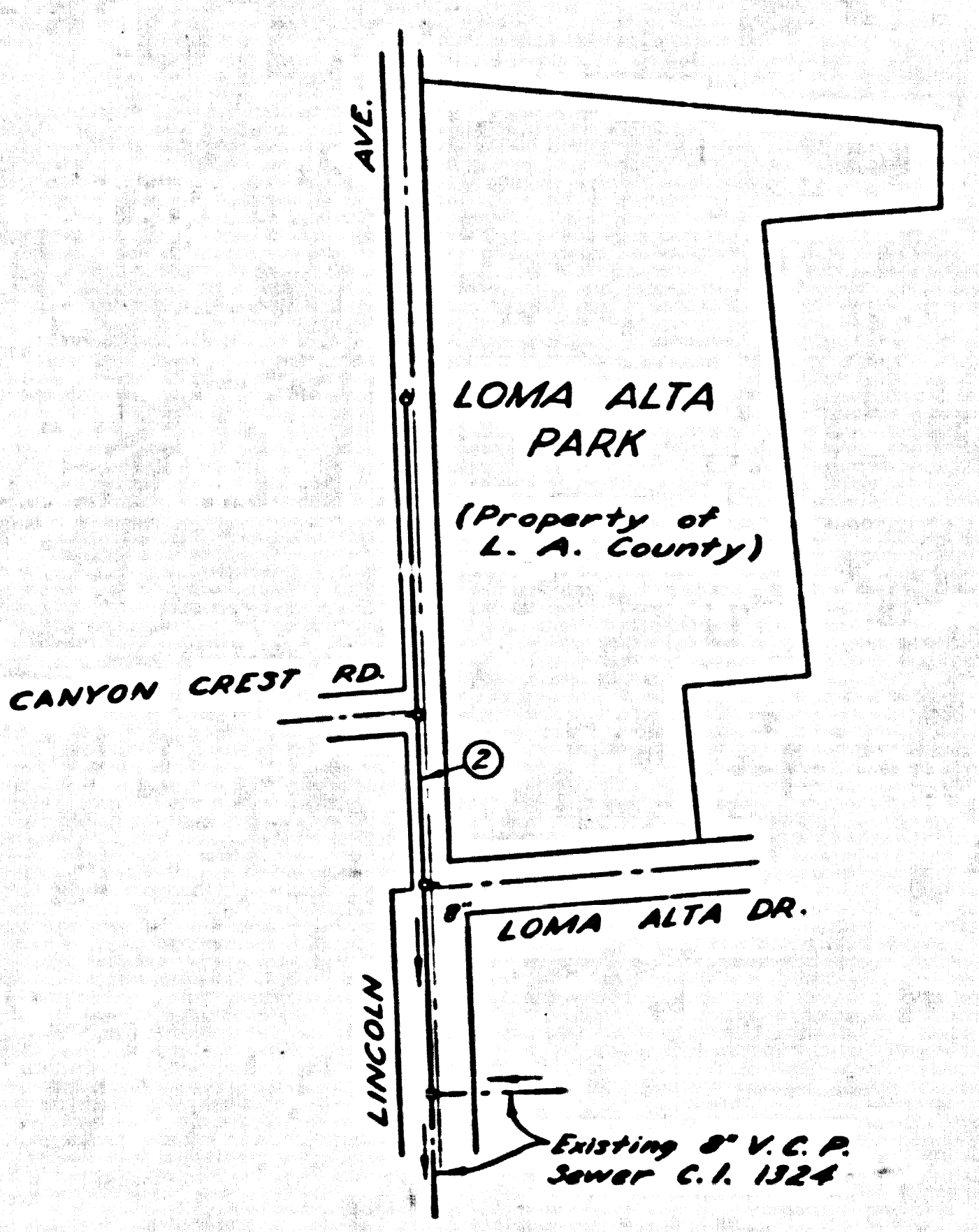
APPROVED *R. J. Grimaldi*
SANITATION ENGINEER

A. M. RAWN
CHIEF ENGINEER OF COUNTY
SANITATION DISTRICT NO. 12
BY *[Signature]*
OFFICE ENGINEER

FOR LEGEND
SEE PLAN NO. S-4-64

NOTES:
GRADES TO WHICH THIS IMPROVEMENT IS TO BE CONSTRUCTED ARE SHOWN ON PLANS AND PROFILES. GRADE POINTS FOR TOP OF CURB, CENTER LINE OF STREET OR CENTER LINE OF ALLEY ARE SHOWN IN CIRCLES OR SQUARES. AT ALL POINTS BETWEEN DESIGNATED POINTS THE GRADE SHALL BE ESTABLISHED SO AS TO CONFORM TO A STRAIGHT LINE BETWEEN SAID DESIGNATED POINTS.
ELEVATIONS ARE IN FEET ABOVE U. S. C. & G. SEA LEVEL DATUM AS OF 1929.
UNIT PRICES FOR ADDITIONAL WORK WHICH MAY BE REQUIRED BUT WHICH CANNOT BE ASCERTAINED IN ADVANCE, SHALL BE SUBMITTED IN THE PROPOSAL.
THIS DRAWING AND THE DATA HEREON ARE HEREBY MADE A PART OF THE SPECIFICATIONS.

REFERENCES		
W.S. 50 A-1	DESIGNED	J. V. GRIMALDI AUG. 1958
A.B. 1464-5-6 & 5830-11-12-13	TRACED	J. V. GRIMALDI AUG. 1958
F.B. 1663	CHECKED	L. JAIME SEPT. 1958

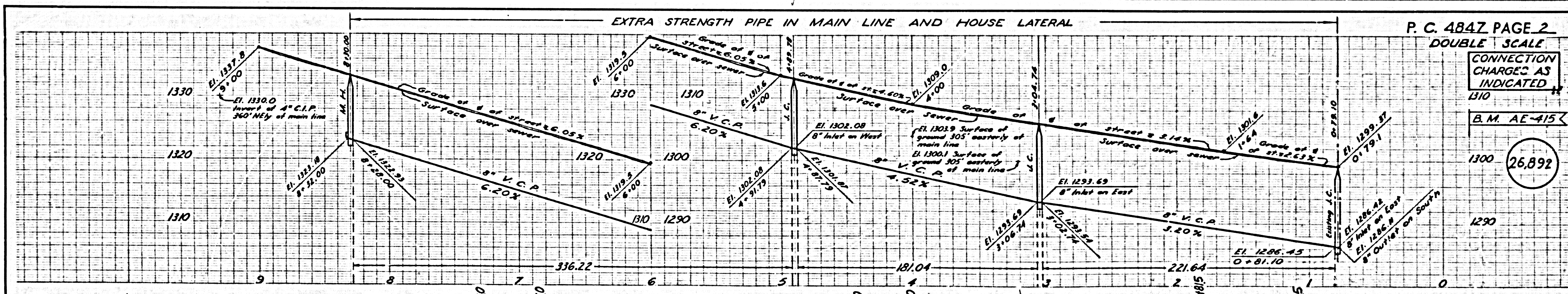


CONNECTION CHARGES AS INDICATED
H. W. Kuegel

Index Map
Scale 1" = 200'
P. C. NO 4847
Capital Project NO 8835.10

- USE STANDARD STRENGTH PIPE EXCEPT AS NOTED.
- USE CEMENT MORTAR FOR ALL VITRIFIED CLAY PIPE JOINTS.
- ALL STRUCTURES SHALL BE BRICK SEWER STRUCTURES AS PER PLAN NO. S-A-104, EXCEPT AS NOTED.
- USE STANDARD MANHOLE FRAMES AND COVERS AS PER PLAN NO. S-A-117, EXCEPT AS NOTED.
- RESURFACE TRENCH WITHIN PAVED AREA WITH PREMIX ROCK AND OIL 3 INCHES IN THICKNESS EXCEPT AS NOTED.
- USE FORMULA NO. 1 SEC. 54 OF SPECIFICATIONS TO COMPUTE ALLOWABLE LEAKAGE.
- THE CONTRACTOR SHALL NOTIFY THE CONSTRUCTION AND STORM DRAIN DIVISION BY TELEPHONE MADISON 9-4747, EXT. 362 AT LEAST 24 HOURS BEFORE STARTING ANY WORK UNDER THIS CONTRACT.
- CONSTRUCT HOUSE LATERALS WITH INVERTS AT PROPERTY LINE 6 FEET BELOW CURB GRADE, OR GRADE OF CENTER LINE OF STREET EXCEPT AS NOTED.
- FIGURES IN CIRCLES AT ENDS OF HOUSE LATERALS INDICATE DEPTH BELOW CURB GRADE, OR GRADE OF CENTER LINE OF STREET.
- FIGURES IN CIRCLES AT ENDS OF HOUSE LATERALS INDICATE HOUSE LATERALS SHALL BE CONSTRUCTED WITH W-8 PER FOOT TO PROPERTY LINE.
- WORDS IN CIRCLES AT ENDS OF HOUSE LATERALS INDICATE W-8 SHALL BE LAID HORIZONTAL AND HOUSE LATERALS SHALL BE CONSTRUCTED WITH W-8 PER FOOT TO PROPERTY LINE.
- CONSTRUCTION IN STATE HIGHWAYS SHALL CONFORM WITH STATE HIGHWAY PERMITS.

Trim Line

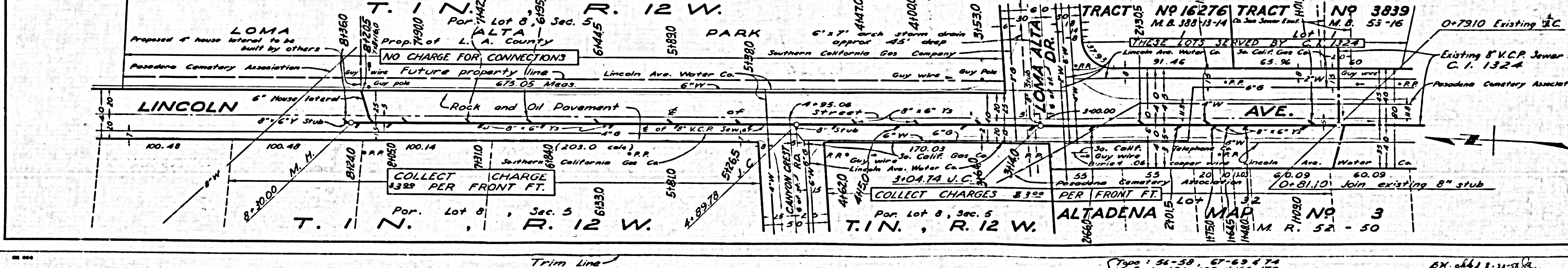


P. C. 4847 PAGE 2
DOUBLE SCALE

CONNECTION CHARGES AS INDICATED
1310

B. M. AE-415
1300

26,892
1290



Trim Line

F.B. 1663
1000: 56-58, 67-69 & 74
1500: 156-160 & 166-170
170

6X 44 1/2 x 31 1/2
Underground 102 1/2 x 28