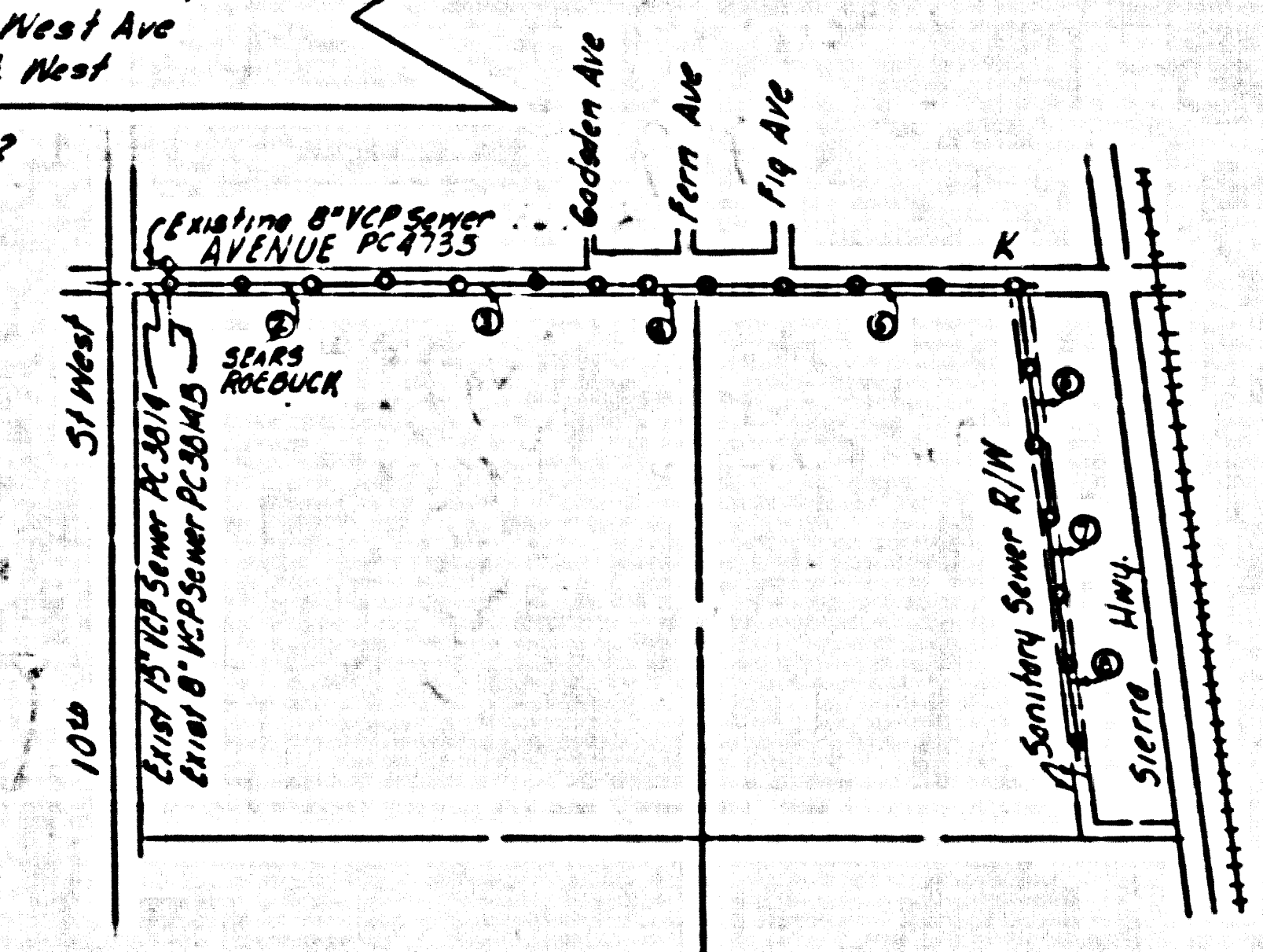


B.M. 51-88 Elev 2406.520 Chisel
 X on top of Ball on N.E. Side of
 P.H. Base 30" S. & West Ave
 K 75' West & 104' S. West
 1957 Adj. El. 2406.52



Index Map
 P.C. 4848
 Scale 1"=1000'

COLLECT CHARGES
 AS INDICATED
M. J. Ball 8-15-58

LANCASTER BLDG. DIST. NO. 8

- NOTES:
- PROVIDE STAKES ON THE PROPERTY LINE OR PROPERTY LINES PRODUCED AT RIGHT ANGLES TO THE SEWER LINE AT THE CENTER LINE OF EACH MANHOLE.
 - NO REPRESENTATIVE OF THE COUNTY ENGINEER WILL SURVEY OR LAY OUT ANY PORTION OF THE WORK.
 - THE OWNER OR HIS AUTHORIZED REPRESENTATIVE SHALL FURNISH THE COUNTY ENGINEER WITH GRADE SHEETS AND STATIONING FOR ALL HOUSE LATERALS AND Y BRANCHES AND SHALL PROVIDE STAKES FOR THEM AT THEIR PROPER LOCATIONS WITH STATIONING PLAINLY MARKED. ANY CHANGE IN LOCATION SHALL BE REQUESTED IN WRITING BY THE OWNER OR HIS AUTHORIZED REPRESENTATIVE.
 - THE PRIVATE ENGINEER SHALL FURNISH THE HOUSE LATERAL DEPTH AT THE PROPERTY LINE BELOW THE TOP OF CURB ELEVATION FOR EACH HOUSE LATERAL ON THE GRADE SHEET.
 - NO REVISIONS SHALL BE MADE IN THESE PLANS WITHOUT THE APPROVAL OF THE COUNTY ENGINEER.
 - USE STANDARD MANHOLE FRAMES AND COVERS, 5-6-113/REGULAR-SHOWER.
 - USE STANDARD STRENGTH PIPE EXCEPT AS NOTED.
 - USE GRENDAH ROBTAR OR "WEDGE-LOCK" OR "SPEED-SEAL" FOR ALL V.C.P. JOINTS PER SPEC'S, SECS. 26 & 27.
 - RESURFACE ALL TRENCH WITHIN PAVED AREA TO MEET L.A. COUNTY ROAD DEPT. OR CALIF. STATE HIGHWAY REQUIREMENTS IN ACCORDANCE WITH PERMITS.
 - INDICATE FOUR FEET OF SEWER AT POINTS OF INTERFERENCE WITH POLES, CASE NO. S-172.
 - ALL STRUCTURES SHALL BE BRICK SEWER STRUCTURES, 6-100-65085-10-1000.
 - FOR ALLOWANCE HEADAGE TEST USE FORMULA NO. 1, SPEC'S, SEC. 64.
 - MANHOLE TOPS IN UNIMPROVED RIGHTS-OF-WAY TO BE SIX INCHES ABOVE FINISHED GRADE.
 - THE CONTRACTOR SHALL NOTIFY THE CONSTRUCTION & STORM DRAIN DIVISION BY TELEPHONE, WHITEHALL 20401 EXT. 40 AT LEAST TWENTY-FOUR HOURS BEFORE STARTING ANY WORK UNDER THIS CONTRACT.
 - BALL ALL PIPE JOINTS WITH FOUR INCH CEMENT MORTAR THAT ARE WITHIN TWENTY FEET OF ALL PROPERTY LINES EXCEPT WHEN USING WEDGE-LOCK OR SPEED-SEAL JOINTS.
 - USE WEDGE LOCK OR SPEED SEAL JOINTS FOR ALL V.C.P. JOINTS WITHIN SANITARY SEWER R/W.

NOTE: SOIL TYPES SHOWN IN PROFILE INDICATE TYPES ENCOUNTERED DURING CONSTRUCTION IN VICINITY OF STATION WHERE SHOWN. SLOPE SIDE TYPE INDICATE ROLLING ROAD.

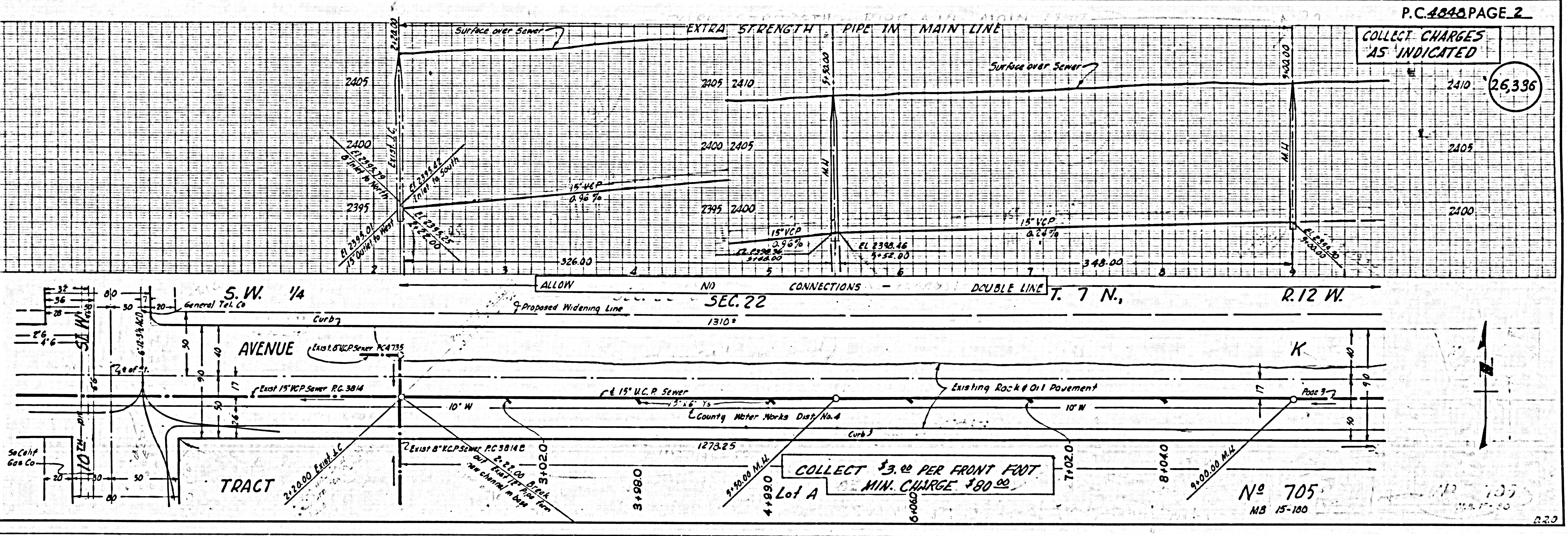
**ISSUE NO PERMITS
 UNTIL R/W IS DEDICATED
 CALL SANITATION DIVISION**

APPROVED BY:
Edward Valencia 8/21/58
 INDUSTRIAL WASTE DIVISION

PROFILE ALIGNMENT AND GRADE OF **P.C. 4848**
SANITARY SEWERS PAGE 1
 TO BE CONSTRUCTED IN
**AVENUE K AND RIGHT OF WAY
 WEST OF SIERRA HIGHWAY**
PRIVATE CONTRACT NO. 4848
 W.S. 70
 2 SHEETS, 0 PAGES (26335)
 SCALE: VERT. 1"=4' HORIZ. 1"=40'
 JULY 1958
 PREPARED BY THE OFFICES OF
GEORGE W. HALL
George W. Hall
 REG. C. E. NO. 8122
 FOR LEGEND SEE PLAN NO. S-A-64

NOTES:
 GRADES TO WHICH THIS IMPROVEMENT IS TO BE CONSTRUCTED ARE SHOWN ON PLANS AND PROFILE. GRADE POINTS FOR TOP OF CURBS, CENTER LINE OF STREETS, OR CENTER LINE OF ALLEYS ARE SHOWN BY CIRCLES ON PROFILES. AT ALL POINTS BETWEEN DESIGNATED POINTS THE GRADE SHALL BE ESTABLISHED SO AS TO CONFORM TO A STRAIGHT LINE DRAWN BETWEEN SAID DESIGNATED POINTS.
 REVISIONS AND ANY OTHER ABOVE SPEC'S OR S.D.S. SEA LEVEL BASIS OF 1929.
 THE BELIEVING THAT THE DATA HEREON ARE TRUE AND CORRECT AND A PART OF THE SPECIFICATIONS.
 WORK SHALL BE CONSTRUCTED ACCORDING TO SPECIFICATIONS ON FILE IN THE OFFICE OF THE COUNTY ENGINEER AND SHALL BE INSPECTED BY HIM OR HIS DEPUTY.
 BEFORE WORK CAN BE STARTED, THE CONTRACTOR MUST OBTAIN A PERMIT TO EXCAVATE IN COUNTY STREETS FROM THE L.A. COUNTY ROAD DEPT. PERMITS SHALL BE OBTAINED FROM THE COUNTY ENGINEER, ROOM 534 SAN ANTONIO BUILDING, 720 SO. BROADWAY. SUFFICIENT TO COVER THE COST OF CONSTRUCTION INSPECTION AND RECORD PLANS.
 APPROVAL OF THIS PLAN BY THE COUNTY OF LOS ANGELES DOES NOT CONSTITUTE A REPRESENTATION AS TO THE ACCURACY OF THE LOCATION OF OR THE EXISTENCE OR NON-EXISTENCE OF ANY UNDERGROUND UTILITY PIPE, OR STRUCTURE WITHIN THE LIMITS OF THIS PROJECT. THIS NOTE APPLIES TO ALL PAGES.
 IF WORK IS TO BE DONE BY A STATE HIGHWAY, A PERMIT MUST BE OBTAINED FROM THE STATE OF CALIFORNIA, DIVISION OF HIGHWAY, 120 SOUTH SPRING STREET.

COUNTY OF LOS ANGELES, CALIFORNIA
 APPROVED, JOHN A. LAMBIE, COUNTY ENGINEER APPROVED, A. M. RAWL, CHIEF ENGINEER
 BY *A. J. Hughes* BY *A. M. Rawl*
 SANITATION ENGINEER OFFICE ENGINEER
 CHECKED BY *S. J. Onda* 8-23-58
 OFFICE OF COUNTY ENGINEER, REG. C. E. NO. 3436
 Recommended by *Ronald E. Kubler*
 Regional Engineer

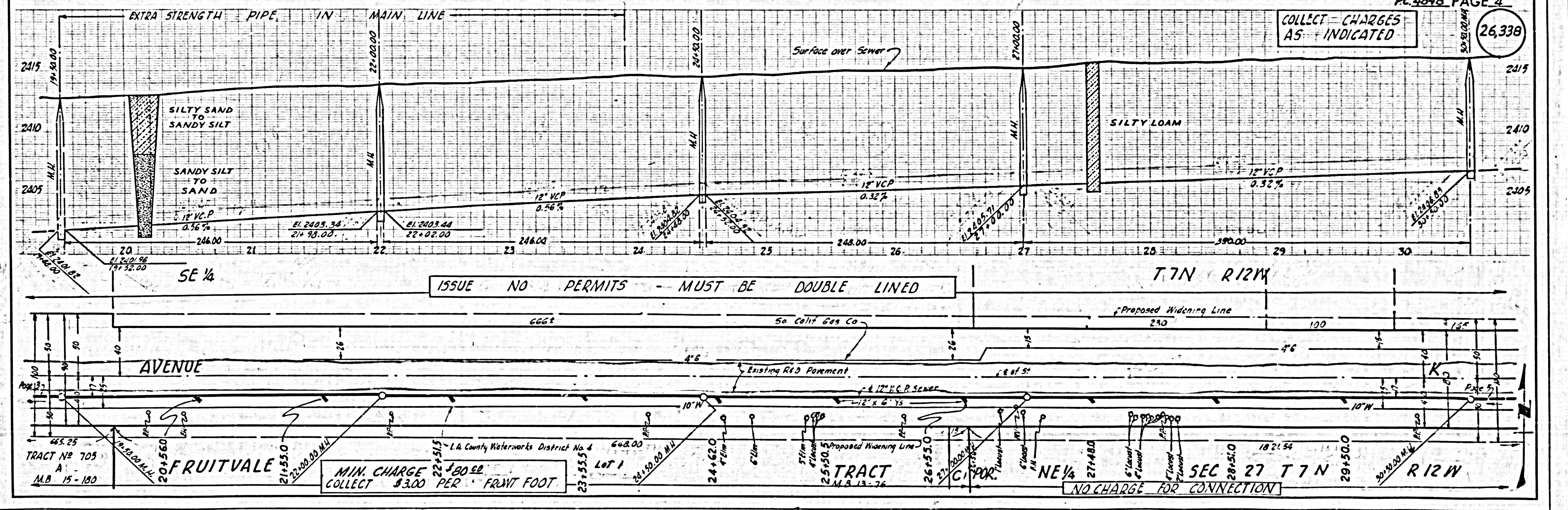
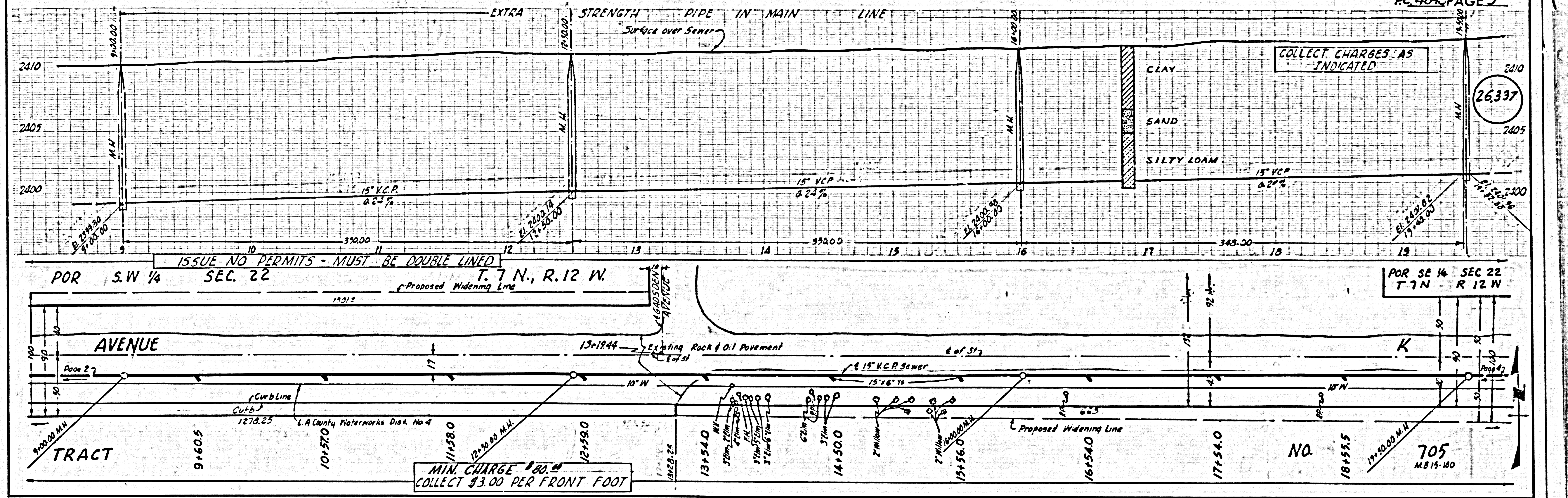


COLLECT CHARGES
 AS INDICATED

COLLECT \$3.00 PER FRONT FOOT
 MIN. CHARGE \$80.00

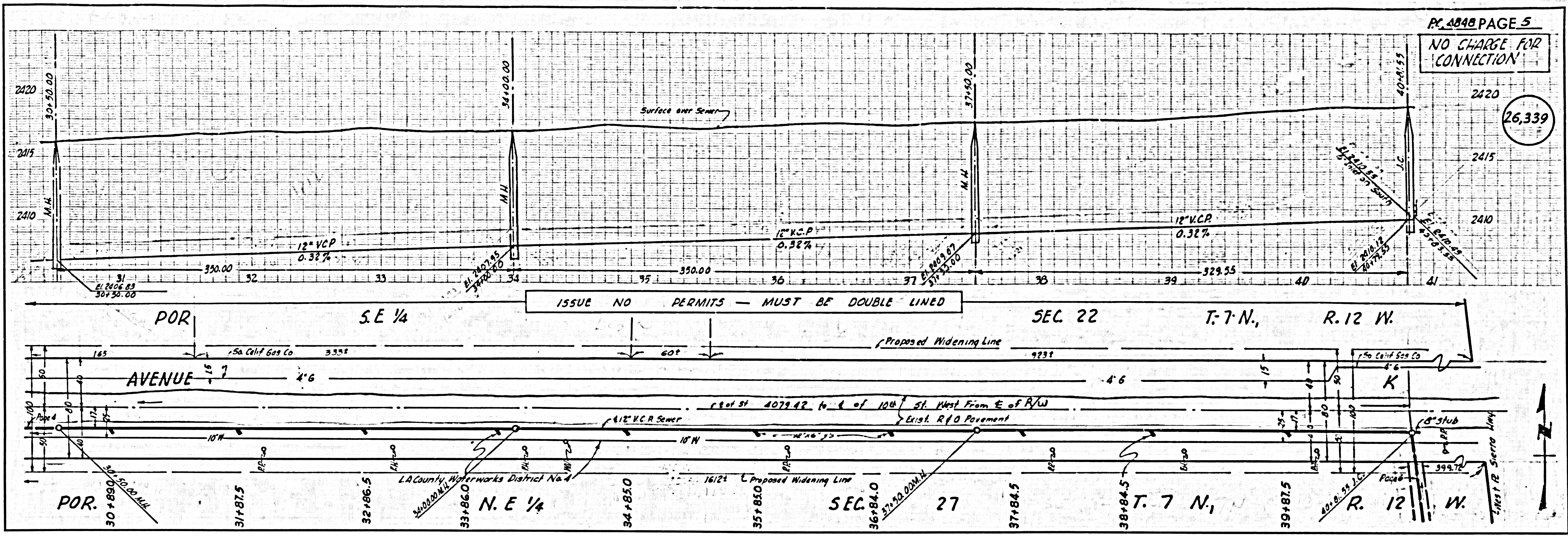
No 705
 MS 15-100

(26336)



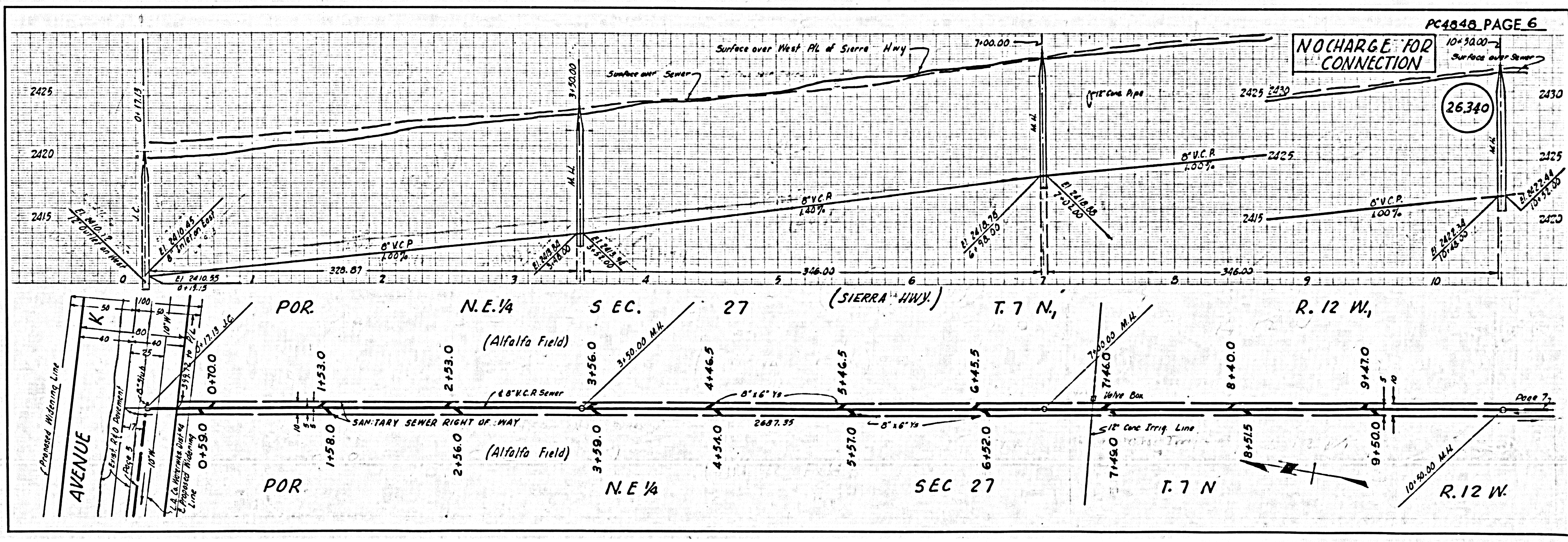
NO CHARGE FOR CONNECTION

26,339

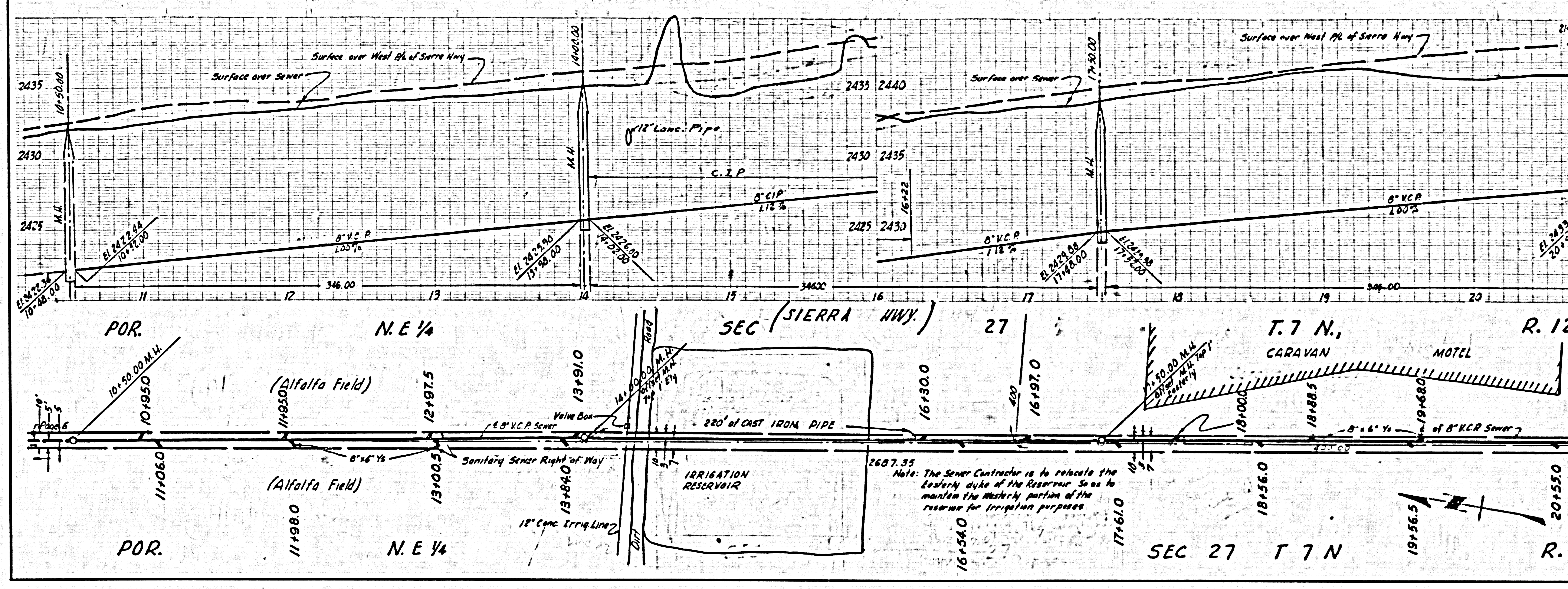


NO CHARGE FOR CONNECTION

26,340



26,341



Note: The Sewer Contractor is to relocate the Eastern dike of the Reservoir so as to maintain the Western portion of the reservoir for Irrigation purposes

26,342

