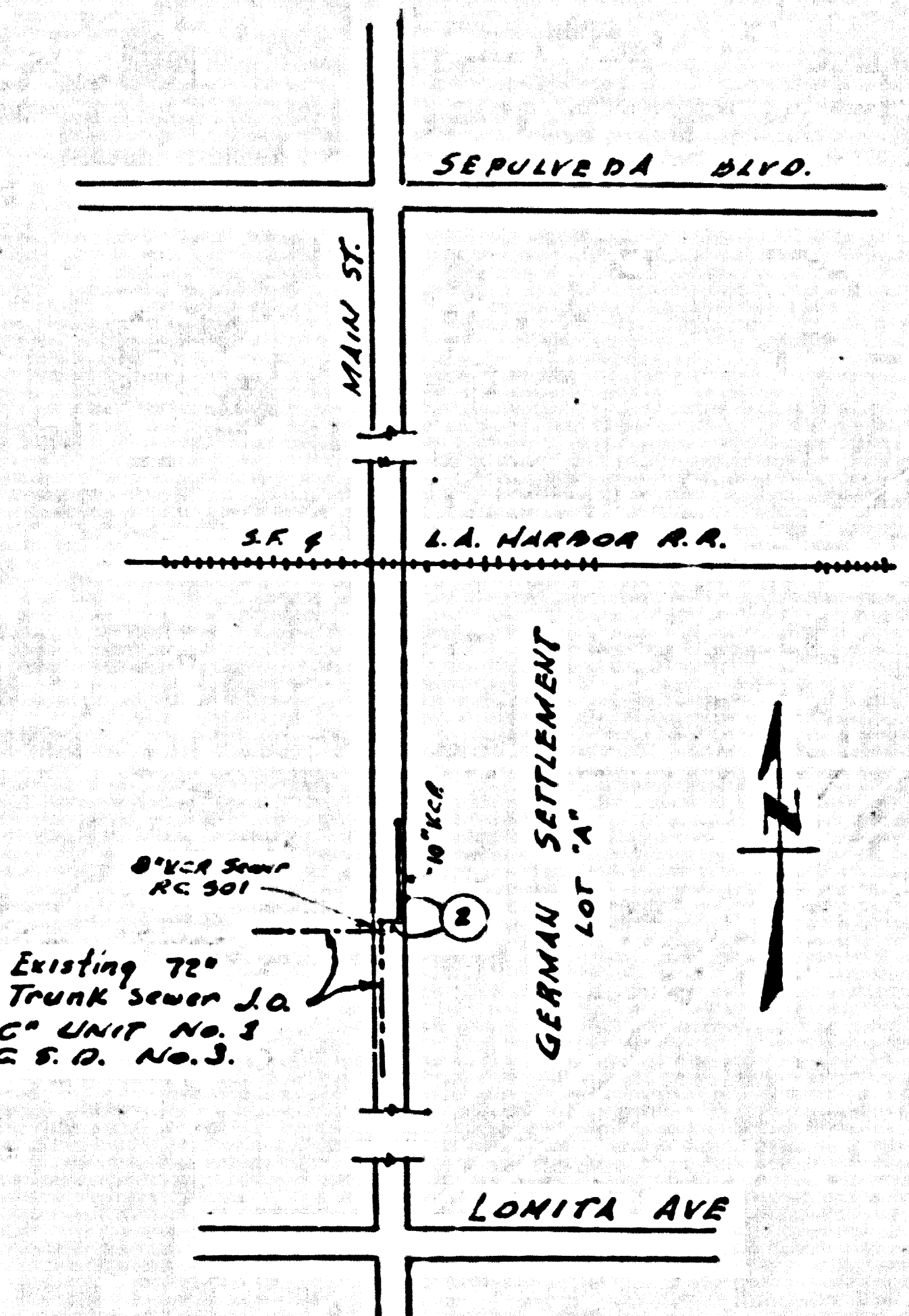


P.M. 573940, Elev 37328
Main Street near Fletcher Oil Co. Sales Office
L.A. Bond N.E. Cont. Slab 25' x 10' c/L. Main Street
(Gardens Quad)



CONNECTION CHARGES
AS INDICATED
Carl H. Pomeroy

INDEX MAP
Scale 1" = 300'
P.C. 4850

LOMITA BLDG. DIST. NO. 7-I

- NOTES
1. PROVIDE STAKES ON THE PROPERTY LINE OR PROPERTY LINES PRODUCED AT RIGHT ANGLES TO THE SEWER LINE AT THE CENTER LINE OF EACH MANHOLE.
 2. NO REPRESENTATIVE OF THE COUNTY ENGINEER WILL SURVEY OR LAY OUT ANY PORTION OF THE WORK.
 3. THE OWNER OR HIS AUTHORIZED REPRESENTATIVE SHALL FURNISH THE COUNTY ENGINEER WITH GRASS SHEETS AND STATIONING FOR ALL HOUSE LATERALS AND Y BRANCHES AND SHALL PROVIDE STAKES FOR THEM AT THEIR PROPER LOCATIONS WITH STATIONING PLAINLY MARKED. ANY CHANGE IN LOCATION SHALL BE REQUESTED BY WRITING BY THE OWNER OR HIS REPRESENTATIVE.
 4. THE PRIVATE ENGINEER SHALL FURNISH THE HOUSE LATERAL DEPTH AT THE PROPERTY LINE BELOW THE *foot of street* ELEVATION FOR EACH HOUSE, LATERAL OR THE GRADE SHEET.
 5. NO BYEWAYS SHALL BE MADE IN THESE PLANS WITHOUT THE APPROVAL OF THE COUNTY ENGINEER.
 6. USE STANDARD MANHOLE FRAMES AND COVERS, S-117, EXCEPT AS NOTED.
 7. USE STANDARD STRENGTH PIPE EXCEPT AS NOTED.
 8. USE CEMENT MORTAR OR "WEDG-LOCK" OR "ZEPHYR" FOR ALL V.C.P. JOINTS PER SPEC., SECS. 18 & 19.
 9. RESURFACE ALL TRENCH WITHIN 4' WIDE AREA TO MEET L.A. COUNTY ROAD DEPT. OR CALIF. STATE HIGHWAY REQUIREMENTS IN ACCORDANCE WITH PERMITS.
 10. ENCASE FOUR FEET OF SEWER AT POINTS OF INTERFERENCE WITH POLES, CASE NO. S-117.
 11. HOUSE LATERALS TO BE CONSTRUCTED WITHIN 4' WIDE AREA TO MEET L.A. COUNTY ROAD DEPT. OR CALIF. STATE HIGHWAY REQUIREMENTS IN ACCORDANCE WITH PERMITS.
 12. ALL STRUCTURES SHALL BE BRICK SEWER STRUCTURES, 1-116, EXCEPT AS NOTED.
 13. FOR ALLOWABLE LEAKAGE TEST USE FORMULA NO. 1 - SPEC., SEC. 18.
 14. MANHOLE TOPS IN UNIMPROVED RIGHTS-OF-WAY TO BE SIX INCHES ABOVE FINISHED GRADE.
 15. THE CONTRACTOR SHALL NOTIFY THE CONSTRUCTION & STORM DRAIN DIVISION BY TELEPHONE, MADISON 4-610, EXT. 205, AT LEAST TWENTY-FOUR HOURS BEFORE STARTING ANY WORK UNDER THIS CONTRACT.

16. The location of existing underground utilities shown on this plan were taken from recorded documents and therefore said location is not guaranteed by the Owner or Engineer. Verification of location of all pipes shall be the responsibility of the contractor.
17. Jack 36" or 30" x 30" steel pipe 3/4" thick under (trash or pavement). Beam-pile as specified in Specs. 48, Sec. 61.
18. Tunnel 40' under pavement per specs. Sec. 48, Beam-pile as specified in Specs. 48, Sec. 61.

PROFILE ALIGNMENT AND GRADE OF P.C. 4850
SANITARY SEWERS PAGE 1

MAIN STREET

PRIVATE CONTRACT NO. 4850

W.S. 20
1 SHEET, 2 PAGES
SCALE: VERT. 1" = 20'
HORIZ. 1" = 50'
July, 1954

PREPARED BY THE OFFICES OF
L. W. DAVIDSON & ASSOC.
Paul B. Maurer
REG. C. E. NO. 3777

FOR LEGEND SEE PLAN NO. S-A-64

NOTES

GRABES TO WHICH THIS IMPROVEMENT IS TO BE CONSTRUCTED ARE SHOWN ON PLANS AND PROFILE GRADE POINTS FOR TOP OF CURBS, CENTER LINE OF STREETS, OR CENTER LINE OF ALLEYS ARE SHOWN BY CIRCLES ON PROFILES. AT ALL POINTS BETWEEN DESIGNATED POINTS THE GRADE SHALL BE ESTABLISHED SO AS TO CONFORM TO A STRAIGHT LINE DRAWN BETWEEN SAID DESIGNATED POINTS.

ELEVATIONS ARE IN FEET ABOVE U.S.C. & G.S. SEA LEVEL DATUM OF 1929.

THIS DRAWING AND THE DATA HEREON ARE HEREBY MADE A PART OF THE SPECIFICATIONS.

WORK SHALL BE CONSTRUCTED ACCORDING TO SPECIFICATIONS ON THIS IN THE OFFICE OF THE COUNTY ENGINEER AND SHALL BE PROSECUTED ONLY IN THE PRESENCE OF THE COUNTY ENGINEER.

BEFORE WORK CAN BE STARTED, THE CONTRACTOR MUST OBTAIN A PERMIT TO EXCAVATE IN COUNTY STREETS FROM THE L. A. COUNTY ROAD DEPT., DISTRICT OFFICE NO. 3 - AND MAKE A DEPOSIT WITH THE COUNTY ENGINEER, ROOM 324 AMERICAN BUILDING, 333 SO. BRUNNEN ST. TO COVER THE COST OF CONSTRUCTION INSPECTION AND RECORD PLANS.

APPROVAL OF THIS PLAN BY THE COUNTY OF LOS ANGELES DOES NOT CONSTITUTE A REPRESENTATION AS TO THE ACCURACY OF THE LOCATION OF OR THE EXISTENCE OR NON-EXISTENCE OF ANY UNDERGROUND UTILITY PIPE, OR STRUCTURE WITHIN THE LIMITS OF THE PROJECT. THIS NOTE APPLIES TO ALL PAGES.

IF WORK IS TO BE DONE BY A STATE HIGHWAY, A PERMIT MUST BE OBTAINED FROM THE STATE OF CALIFORNIA, DIVISION OF HIGHWAYS, 126 BOWNE BRIDGE STREET.

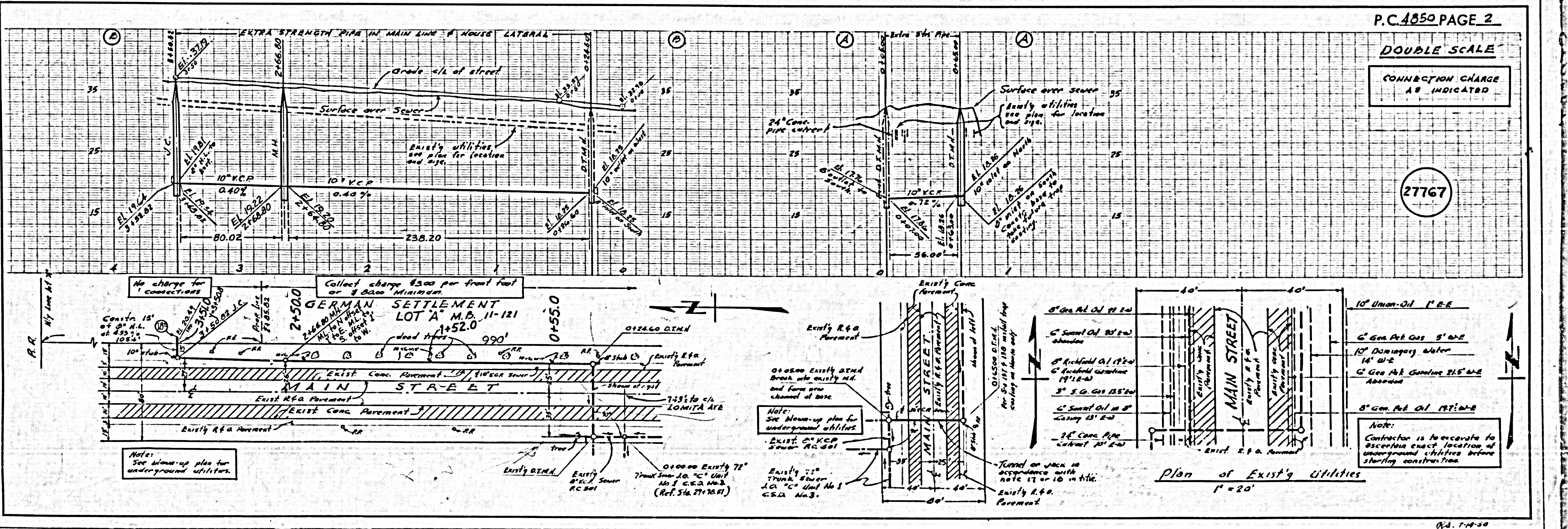
COUNTY OF LOS ANGELES, CALIFORNIA

APPROVED, JOHN A. LAMBE, COUNTY ENGINEER
John A. Lambe

APPROVED, A. M. RAWNS, CHIEF ENGINEER
A. M. Rawns

CHECKED BY *W. W. W. W.* 8-2-1954
OFFICE OF COUNTY ENGINEER, REG. C. E. NO. 2436

APPROVED BY
INDUSTRIAL WASTE DIVISION
BY *Edward S. Valchey* 8-2-54



P.C. 4850 PAGE 2

DOUBLE SCALE

CONNECTION CHARGE
AS INDICATED

27767

Plan of Existing Utilities
1" = 20'

8-2-54