

SY 163 - Elev 55.223 (1950 Adj.),  
NW 1/4 Section near intersection  
of South St & Lakewood Blvd (Safflower Quad)  
Co. Sur. Precise 54.376 1055 Adj.

Note:  
Subtract 0.847 from Elevations shown  
on this Plan to equal Co. Sur. Precise Datum.

LAKWOOD BLDG. DIST. NO. 401

PROFILE ALIGNMENT AND GRADE OF P.C. 4851  
SANITARY SEWERS PAGE 1  
TO BE CONSTRUCTED IN  
TRACT NO. 24305

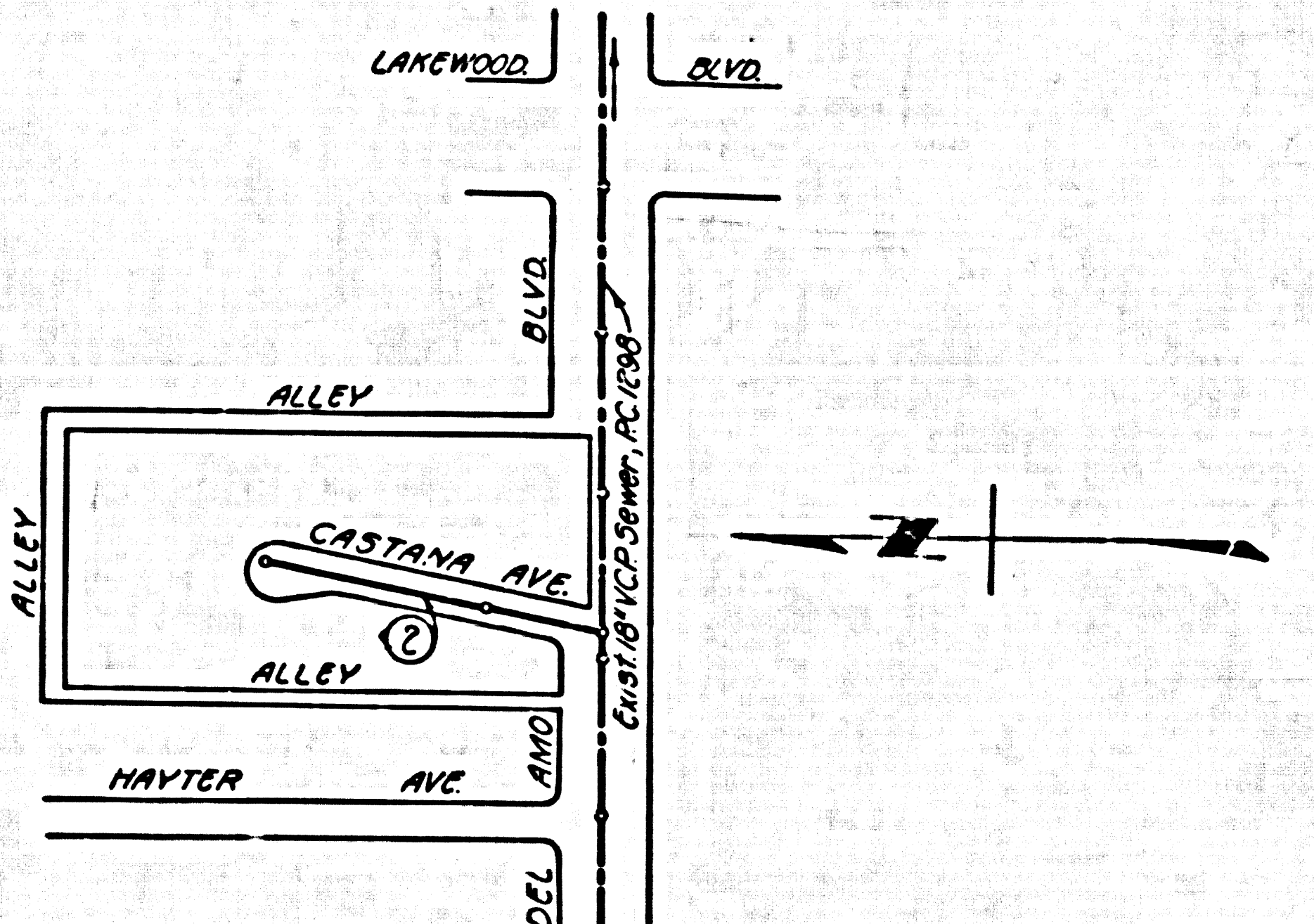
PRIVATE CONTRACT NO. 4851

W.S. 30  
1 SHEET, 2 PAGES  
SCALE: VERT. 1" = 4'  
HORIZ. 1" = 40'  
JUNE, 1958  
PREPARED IN THE OFFICES OF  
ENGINEERING SERVICE CORPORATION

28,337

By: [Signature]  
REG. C. E. NO. 1622  
FOR LEGEND SEE PLAN NO. S-A-64

- NOTE:  
PROVIDE STAKES ON THE PROPERTY LINE OR PROPERTY LINE PRODUCED AT RIGHT ANGLES TO THE SEWER LINE AT THE CENTER LINE OF EACH MANHOLE.  
NO REPRESENTATIVE OF THE CITY ENGINEER WILL SURVEY OR LAY OUT ANY PORTION OF THE WORK.  
THE OWNER OR HIS AUTHORIZED REPRESENTATIVE SHALL FURNISH THE CITY ENGINEER WITH GRADE SHEETS AND STATIONING FOR ALL HOUSE LATERALS AND T BRANCHES AND SHALL PROVIDE STAKES FOR THEM AT THEIR PROPER LOCATIONS WITH STATIONING PLAINLY MARKED. ANY CHANGE IN LOCATION SHALL BE REQUESTED IN WRITING BY THE OWNER OR HIS REPRESENTATIVE.  
NO DIVISIONS SHALL BE MADE IN THESE PLANS WITHOUT THE APPROVAL OF THE CITY ENGINEER.  
1. USE STAMPA'S MANHOLE FRAMES AND COVERS, S.A. 117.  
2. USE BESTA STRENGTH PIPE.  
3. USE BESTA FORMS "NEED-LOCK" OR "SPEED-SEAL" FOR ALL V.C.P. JOINTS PER SPEC'S, SECT. 36 OF SPECIFICATIONS.  
4. RESURFACE ALL FINISH WITH PAVED AREA TO MATCH CITY OF A ROAD DEPT., OR CALIF. STATE HIGHWAY DEPT. REQUIREMENTS IN ACCORDANCE WITH PERMITS.  
5. LOCATE FOUR FEET OF STAKE AT POINTS OF INTERFERENCE WITH POLES, S-U-T, CANE, ETC.  
6. HOUSE LATERALS TO BE CONSTRUCTED WITH 1/2" RISE PER FOOT TO PROPERTY LINE.  
7. ALL STRUCTURES SHALL BE BUILT WITH BRICKWORK, S.A. 114, EXCEPT AS NOTED.  
8. FOR ALLOWABLE LEAKAGE TEST USE FORMULA NO. 2 OF SPEC'S, SEC. 34.  
9. MANHOLES TO BE IN UNIMPROVED AREAS OR WAY TO BE 2' ABOVE FINISHED GRADE.  
10. THE PRIVATE ENGINEER IS TO FURNISH THE HOUSE LATERAL DEPTH AT THE PROPERTY LINE SHOW THE TOP OF CURB ELEVATION FOR EACH HOUSE LATERAL ON THE GRADE SHEET.  
11. THE CONTRACTOR SHALL NOTIFY THE CONSTRUCTION AND STORM DRAIN DIVISION BY TELEPHONE, HARBOR 9-4747, EXT. 362, AT LEAST 24 HOURS BEFORE STARTING ANY WORK UNDER THIS CONTRACT.



P.C. 4851  
INDEX MAP  
TRACT NO. 24305  
SCALE: 1" = 300'

NO CHARGE FOR  
CONNECTIONS  
E. Aguilar 8-24-58

Revision Approved  
By [Signature]  
Office of City Engineer  
Revision Approved  
By [Signature]  
Office of County Engineer

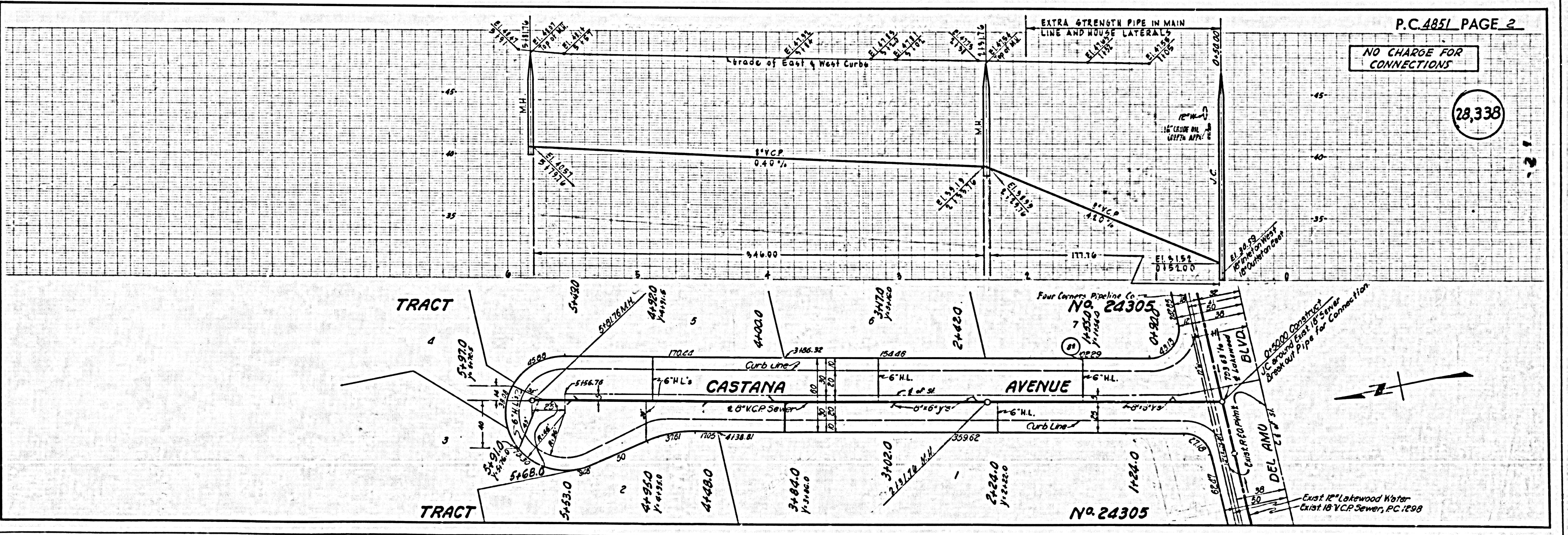
ENGINEERING SERVICE CORPORATION  
1127 W. WASHINGTON BLVD.  
LOS ANGELES 15, CALIF. RI. 9-7281

REVISIONS		TRACED BY	
Revised Lots & Property Lines	AMERICAN	CMR	CMR
Raised Sewer grades, rev. M.H.	April 20, 58	DES'G'D BY	EW
		CK'D BY	
		SUBMITTED	
SUB STRUCTURES OK'D			
W. O. NO.	D.W. NO.	DATE	SCALE
6835-2		JUNE '58	As Shown

NOTE:  
GRADES TO WHICH THIS IMPROVEMENT IS TO BE CONSTRUCTED ARE SHOWN ON PLANS AND PROFILES. GRADE POINTS FOR TOP OF CURB, CENTER LINE OF STREET, OR CENTER LINE OF ALLEYS ARE SHOWN ON PROFILES. AT ALL POINTS BETWEEN REGULATOR POWER THE GRADE SHALL BE ESTABLISHED TO BE TO CORRESPOND TO A STRAIGHT LINE DRAWN BETWEEN SAID GRADE POINTS.  
SECTIONS ARE IN FEET ABOVE U.S.C. & G.S. SEA LEVEL DATUM OF 1929.  
THIS DRAWING AND THE DATA HEREON ARE HEREBY MADE A PART OF THE SPECIFICATIONS.  
WORK SHALL BE CONSTRUCTED ACCORDING TO SPECIFICATIONS ON FILE IN THE OFFICE OF THE CITY ENGINEER AND SHALL BE PROSECUTED ONLY IN THE PRESENCE OF THE CITY ENGINEER.  
BEFORE WORK CAN BE STARTED, THE CONTRACTOR MUST OBTAIN A PERMIT TO EXCAVATE IN CITY STREETS FROM THE CITY OF LAKEWOOD ROAD DEPT. DISTRICT USE AND MAKE A REPORT WITH THE CITY ENGINEER, ROOM 324 MAIN AMERICAN BLDG. 333 SO. BROADWAY SUFFICIENT TO COVER THE COST OF CONSTRUCTION INSPECTION AND SECOND PLANS.  
APPROVAL OF THIS PLAN BY THE CITY OF LAKEWOOD DOES NOT CONSTITUTE A REPRESENTATION AS TO THE ACCURACY OF THE LOCATION OF OR THE EXISTENCE OR NON-EXISTENCE OF ANY UNDERGROUND UTILITY PIPE, OR STRUCTURE WITHIN THE LIMITS OF THIS PROJECT. THE NOTE APPLIES TO ALL PAGES.  
IF WORK IS TO BE DONE IN A STATE HIGHWAY, A PERMIT MUST BE OBTAINED FROM THE STATE OF CALIFORNIA, DIVISION OF HIGHWAYS, 120 SOUTH SPRING STREET.

CITY OF LAKEWOOD, CALIFORNIA  
APPROVED, JOHN A. LAMBE, CITY ENGINEER  
APPROVED, A. M. RAWPL, CHIEF ENGINEER  
By: [Signature] By: [Signature]  
SANTATION ENGINEER OFFICE ENGINEER  
CHECKED BY: [Signature] 5-24-58  
OFFICE OF CITY ENGINEER, REG. C. E. NO. 2405

SUBMITTED BY: [Signature]  
LOS CERRITOS REGIONAL ENGINEER, R.C.E. NO. 3671



NO CHARGE FOR  
CONNECTIONS

28,338

By: [Signature]  
OFFICE OF CITY ENGINEER, REG. C. E. NO. 2405