

PALMDALE BLDG. DIST. NO. 8/1

PROFILE ALIGNMENT AND GRADE OF P.C. 4852
SANITARY SEWERS PAGE 1
TO BE CONSTRUCTED IN

PART OF TRACT 18000 (26,297)
M.B. 471-1-4

PRIVATE CONTRACT NO. 4852

W.S. 65
1 SHEET 2 PAGES

SCALE: VERT. 1"=6'
HORIZ. 1"=40'

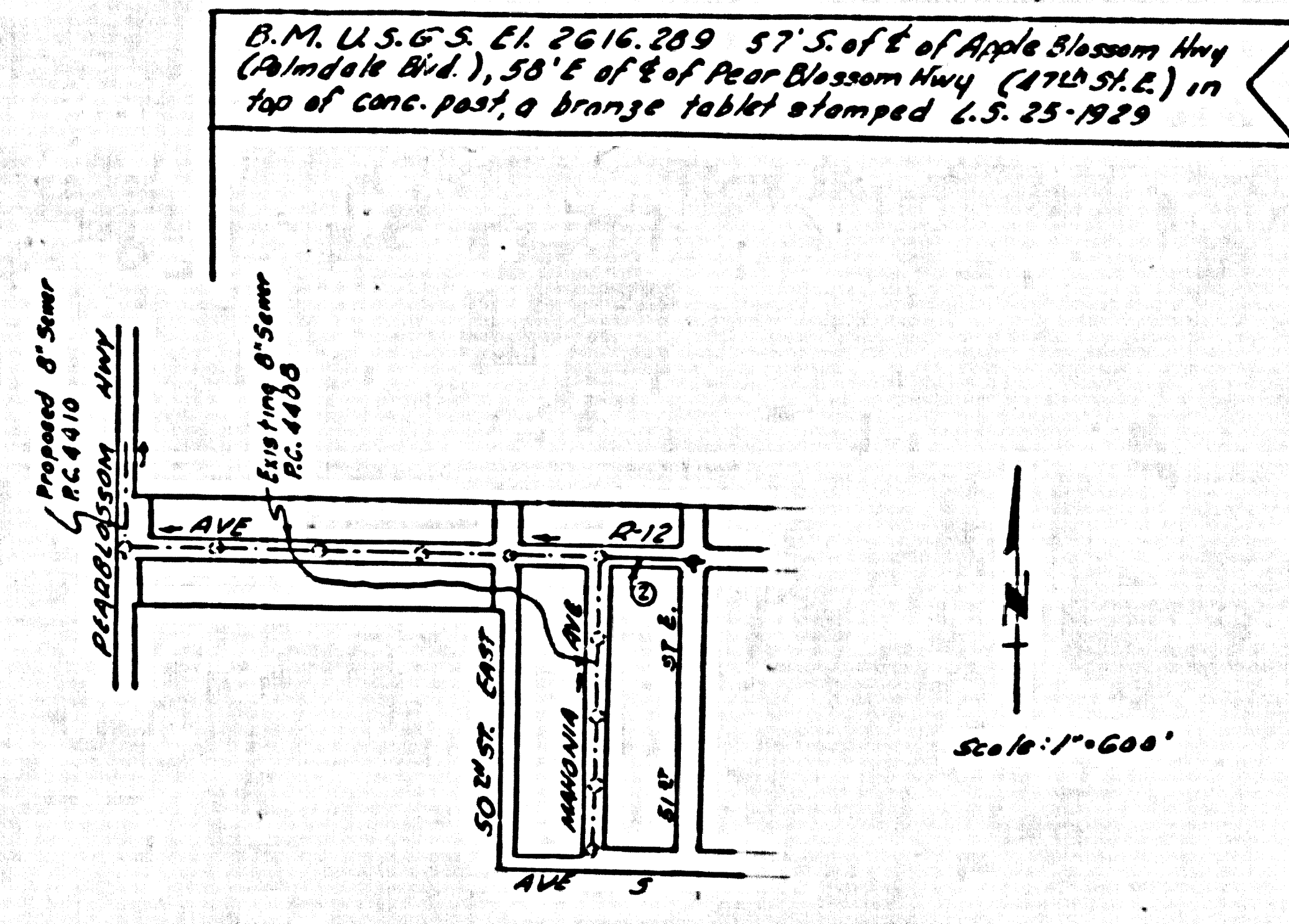
JULY, 1958

PREPARED IN THE OFFICES OF
SURVEY BY GANN

BY *Charles H. Gann*
REG. C. E. NO. 2032

FOR LEGEND SEE PLAN NO. S-A-64

- NOTES
1. PROVIDE STAKES ON THE PROPERTY LINE OR PROPERTY LINES PRODUCED AT RIGHT ANGLES TO THE SEWER LINE AT THE CENTER LINE OF EACH MANHOLE.
 2. NO REPRESENTATIVE OF THE COUNTY ENGINEER WILL SURVEY OR LAY OUT ANY PORTION OF THE WORK.
 3. THE OWNER OR HIS AUTHORIZED REPRESENTATIVE SHALL FURNISH THE COUNTY ENGINEER WITH GRADE SHEETS AND STATIONING FOR ALL HOUSE LATERALS AND Y BRANCHES AND SHALL PROVIDE STAKES FOR THEM AT THEIR PROPER LOCATIONS WITH BEATINGING PLAINLY MARKED. ANY CHANGE IN LOCATION SHALL BE REQUESTED IN WRITING BY THE OWNER OR HIS REPRESENTATIVE.
 4. THE PRIVATE ENGINEER SHALL FURNISH THE HOUSE LATERAL SHEETS AT THE PROPERTY LINE SHOWING THE TOP OF CURB ELEVATION FOR EACH HOUSE LATERAL ON THE GRADE SHEET.
 5. NO REVISIONS SHALL BE MADE IN THESE PLANS WITHOUT THE APPROVAL OF THE COUNTY ENGINEER.
 6. USE STANDARD MANHOLE FRAMES AND COVERS S-117.
 7. USE STANDARD STRENGTH PIPE.
 8. USE CEMENT MORTAR OR WEDGE-LOCK OR "SPEED-SEAL" FOR ALL V.C.P. JOINTS PER SPEC., SECS. 26 & 41.
 9. RESURFACE ALL TRENCH WITHIN PAVED AREA TO MEET L.A. COUNTY ROAD DEPT. OR CALIF. STATE HIGHWAY REQUIREMENTS IN ACCORDANCE WITH PERMITS.
 10. INCASE FOUR FEET OF SEWER AT POINTS OF INTERFERENCE WITH POLES, CASE III, S-117.
 11. HOUSE LATERALS TO BE CONSTRUCTED WITH INVERTS AT PROPERTY LINE 6" FEET BELOW CURB GRADE EXCEPT AS NOTED.
 12. ALL STRUCTURES SHALL BE BRICK SEWER STRUCTURES, S-114.
 13. FOR ALLOWABLE LEAKAGE TEST USE FORMULA NO. 1, SPEC., SEC. 34.
 14. MANHOLE TOPS IN UNIMPROVED RIGHTS-OF-WAY TO BE SIX INCHES ABOVE FINISHED GRADE.
 15. THE CONTRACTOR SHALL NOTIFY THE CONSTRUCTION & STORM DRAIN DIVISION BY TELEPHONE, WITHIN 2-8401, AT LEAST TWENTY-FOUR HOURS BEFORE STARTING ANY WORK UNDER THIS CONTRACT.
 16. Bell all pipe joints with 4" cement mortar that are within 20' of all property lines. Or within Sanitary Sewer R/W except when using wedge lock or Speed Seal joints.



INDEX MAP
R.C. 4852
TRACT No 18000

NO CHARGE FOR CONNECTIONS
Wm. J. Gann 7/16/58

NOTE:
NO CONNECTIONS WILL BE PERMITTED UNTIL OUTLET SEWER IS CONSTRUCTED AND ACCEPTED

NOTES

GRADES TO WHICH THIS IMPROVEMENT IS TO BE CONSTRUCTED ARE SHOWN ON PLANS AND PROFILE GRADE POINTS FOR TOP OF CURB, CENTER LINE OF STREETS, OR CENTER LINE OF ALLEYS ARE SHOWN BY CIRCLES ON PROFILES. AT ALL POINTS BETWEEN DEPARTED POINTS THE GRADE SHALL BE ESTABLISHED SO AS TO CONFORM TO A STRAIGHT LINE DRAWN BETWEEN SAID DEPARTED POINTS.

ELEVATIONS ARE IN FEET ABOVE U.S.C. & G.S. SEA LEVEL DATUM OF 1929.

THE BELIEF AND THE DATA HEREON ARE HEREBY MADE A PART OF THE SPECIFICATIONS.

WORK SHALL BE CONSTRUCTED ACCORDING TO SPECIFICATIONS ON FILE IN THE OFFICE OF THE COUNTY ENGINEER AND SHALL BE INSPECTED ONLY IN THE PRESENCE OF THE COUNTY ENGINEER.

BEFORE WORK CAN BE STARTED THE CONTRACTOR MUST OBTAIN A PERMIT TO EXCAVATE IN COUNTY STREETS FROM THE L.A. COUNTY ROAD DEPT., PALMDALE, AND MAKE A DEPOSIT WITH THE COUNTY ENGINEER, ROOM 224 FIRM AMERICAN BUSINESS, 225 N. BROADWAY, SUFFICIENT TO COVER THE COST OF CONSTRUCTION INSPECTION AND SECTION PLANS.

APPROVAL OF THIS PLAN BY THE COUNTY OF LOS ANGELES DOES NOT CONSTITUTE A REPRESENTATION AS TO THE ACCURACY OF THE LOCATION OF OR THE EXISTENCE OR NON-EXISTENCE OF ANY UNDERGROUND UTILITY PIPE, OR STRUCTURE WITHIN THE LIMITS OF THIS PROJECT. THIS NOTE APPLIES TO ALL PAGES.

IF WORK IS TO BE DONE ON A STATE HIGHWAY, A PERMIT MUST BE OBTAINED FROM THE STATE OF CALIFORNIA, DIVISION OF HIGHWAYS, 120 SOUTH SPRING STREET.

COUNTY OF LOS ANGELES, CALIFORNIA

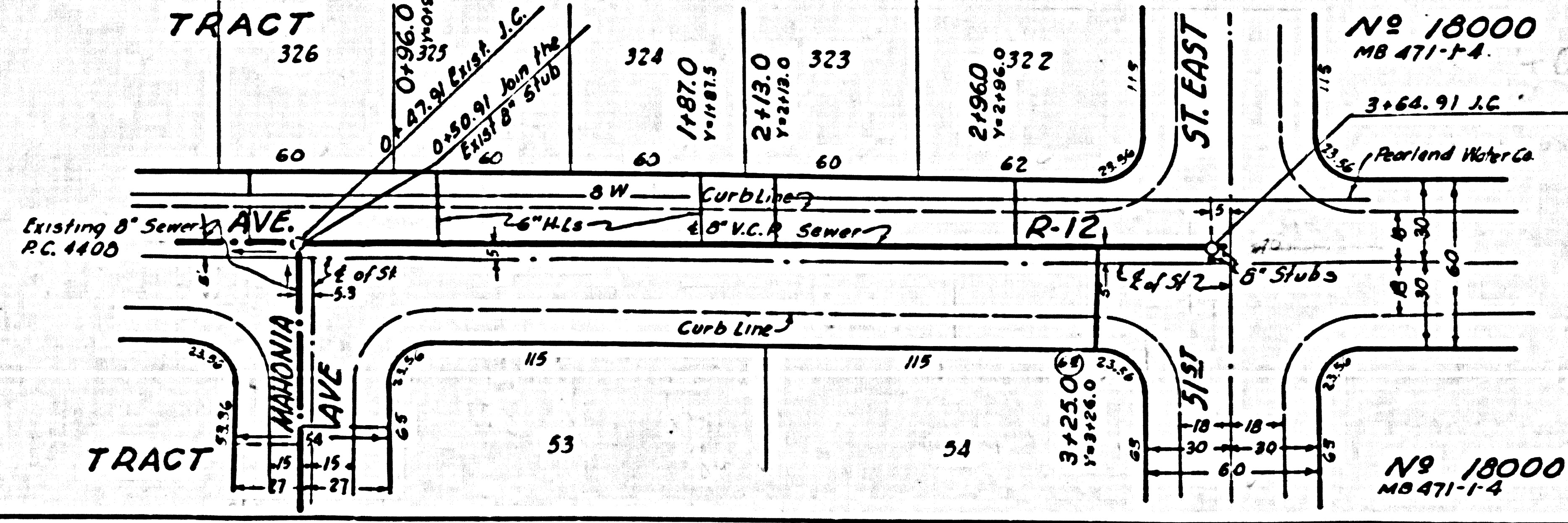
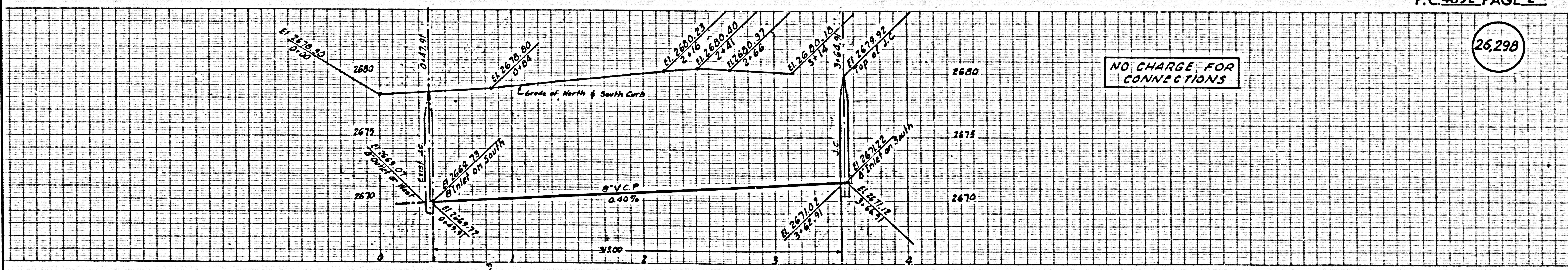
APPROVED, JOHN A. LAMME, COUNTY ENGINEER
BY *John A. Lamme*
APPROVED, A. M. RAWNS, CHIEF ENGINEER
BY *A. M. Rawns*
CHECKED BY *W. J. Gann* 7-17-58
OFFICE OF COUNTY ENGINEER, REG. C. E. NO. 2032

Recommended by *Richard E. Nelson*
Regional Engineer

P.C. 4852 PAGE 2

(26,298)

NO CHARGE FOR CONNECTIONS



D.R.O.