

B.M. SG. 1171 ELEV. 625.639
 L.A. COUNTY SUR. MON. NEAR INT.
 OF CITRUS AVE & FOOTHILL BLVD. TO
 THE WEST. BASELINE 1955

- Alternates to Jacking 42" Steel Pipe Casing
- "A" BORING will be permitted provided:
1. Use 16", Class 150, Cast Iron Water Pipe with approved mechanical type joints.
 2. Annular space around pipe to be filled with grout (4:4 fluid mix).
 3. Contractor will guarantee that the grade be maintained.
- "B" TUNNELING will be permitted provided:
1. Contractor shall comply with the State of California regulations for tunneling.
 2. Backfill shall be placed as specified in the Division of Highways permit.

SAN DIMAS BLDG. DIST. NO. 10

NOTES

PROVIDE STAKES ON THE PROPERTY LINE OR PROPERTY LINES PRODUCED AT RIGHT ANGLES TO THE SEWER LINE AT THE CENTER LINE OF EACH MANHOLE.

NO REPRESENTATIVE OF THE COUNTY ENGINEER WILL SURVEY OR LAYOUT ANY PORTION OF THE WORK.

THE OWNER OR HIS AUTHORIZED REPRESENTATIVE SHALL FURNISH THE COUNTY ENGINEER WITH GRADE SHEETS AND STATION FOR ALL HOUSE LATERALS AND TRENCHES AND SHALL PROVIDE STAKES FOR THEM AT THESE PROPOSED LOCATIONS WITH STATIONING PLAINLY MARKED. ANY CHANGE IN LOCATION SHALL BE REQUESTED IN WRITING BY THE OWNER OR HIS REPRESENTATIVE.

NO REVISIONS SHALL BE MADE IN THESE PLANS WITHOUT THE APPROVAL OF THE COUNTY ENGINEER.

1. USE STANDARD MANHOLE FRAMES AND COVERS, S.A.-117.
2. USE STANDARD STRENGTH PIPE EXCEPT AS NOTED.
3. USE CONCRETE MORTAR, OR SUIPER LITE, OR SUIPER-SEAL FOR ALL J.R.C. JOINTS PER SPECS., SECT. 36.110.
4. SURFACE ALL TRENCH WITHIN PAVED AREA TO MEET L.A. COUNTY ROAD DEPT., OR CALIF. STATE HIGHWAY DEPT. SPECIFICATIONS IN ACCORDANCE WITH PERMITS.
5. ENCASE FOUR FEET OF SEWER AT POINTS OF INTERFERENCE WITH POLES, S.A.-176, CASE 302.
6. JOINTS-REPAIRS TO BE CONSTRUCTED-UNLESS OTHERWISE SPECIFIED-AS SHOWN ON THESE PLANS.
7. ALL STRUCTURES SHALL BE BACK BY STRUCTURES, S.A.-194, EXCEPT AS NOTED.
8. FOR ALLOWABLE STRENGTHS THAT USE FORMULA NO. 1 PER SPECS., SEC. 34.
9. STANDARD SPECIFICATIONS DATED MAY 15, 1959 APPLY TO THE CONSTRUCTION OF THIS PROJECT.

THE CONTRACTOR SHALL NOTIFY THE AZUSA VALLEY WATER CO. TEL. EDGWOOD 42407 BEFORE STARTING WORK UNDER THIS CONTRACT.

NOTES

THE CONTRACTOR SHALL NOTIFY THE CONSTRUCTION AND STORM DRAIN DIVISION BY TELEPHONE, MADISON 9-4747, EXT. 262, AT LEAST 24 HOURS BEFORE STARTING ANY WORK UNDER THIS CONTRACT.

PROFILE ALIGNMENT AND GRADE OF P.C. 4854
 SANITARY SEWERS PAGE 1
 TO BE CONSTRUCTED IN
 CITRUS AVENUE
 FROM 150' SOUTH OF ALTA AVE. TO 5' NORTH OF FOOTHILL BLVD.

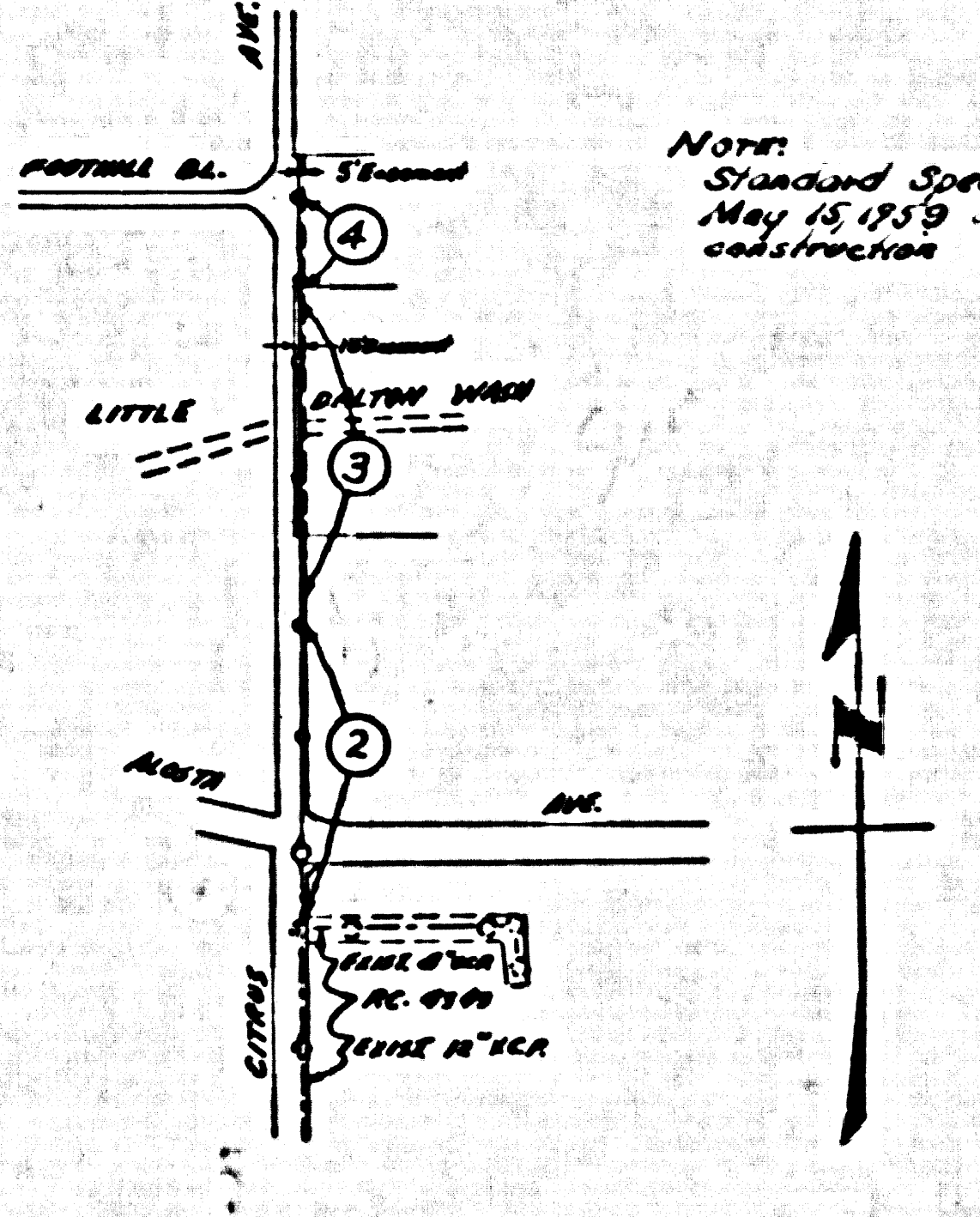
PRIVATE CONTRACT NO. 4854

W.S. 47
 2 SHEETS, 4 PAGES
 SCALE: VERT. 1"=4', HORIZ. 1"=40'
 JULY 1958
 PREPARED IN THE OFFICES OF
 G.J. JENNINGS
 REG. C.E. NO. 1229
 FOR LEGEND SEE PLAN NO. S-A-64

28,239

TEST BORINGS
 #1 NE Corner Citrus & Alota
 #2 SE Corner Citrus & Alota

Elev. 618.5 Ground Surface				Elev. 617.3			
Depth	Soil	Moisture	Remarks	Depth	Soil	Moisture	Remarks
0	SANDY SILT	Moist	3-5% Sand, 5-10% Silt, 85-85% Clay	0	Fine SAND	Moist	1-2% Sand, 10-15% Silt, 83-83% Clay
5	SAND	Moist	10-15% Sand, 20% Silt, 65-65% Clay	5	1-2% Sand, 10-15% Silt, 83-83% Clay	Moist	1-2% Sand, 10-15% Silt, 83-83% Clay
10	SANDY SILT	Moist	10-15% Sand, 20% Silt, 65-65% Clay	10	SAND	Moist	10-15% Sand, 20% Silt, 65-65% Clay
15	SANDY SILT	Moist	10-15% Sand, 20% Silt, 65-65% Clay	15	SANDY SILT	Moist	10-15% Sand, 20% Silt, 65-65% Clay



INDEX MAP
 PC 4854
 SCALE 1"=600'

CITRUS UNION HIGH SCHOOL DIST.
 Grant L. Smith 9-5-57

COLLECT CHARGES
 AS INDICATED
 L. L. Curtis 9-5-58

REVISED
 Relocate sewer in Citrus Ave.
 from 1+83.00 to 1+83.17.
 Approved: J. L. Decker 9-5-57
 Office of County Engr.-R.E. 3466

REVISED
 Relocate Sewer in Citrus
 Ave. from 4+90.00 to 19+83.17
 Approved: J. L. Decker 9-5-57
 Office of County Engr.-R.E. 3467

WORKS

GRADES TO WHICH THE IMPROVEMENT IS TO BE CONSTRUCTED AND SHOWN ON PLANS AND PROFILE, GRADE POINTS FOR TOP OF CURB, CENTER LINE OF STREET, OR CENTER LINE OF ALL LINES SHOWN BY CIRCLES ON PROFILES. AT ALL POINTS BETWEEN INDICATED POINTS THE GRADE SHALL BE ESTABLISHED SO AS TO COMFORM TO A STRAIGHT LINE BEYOND THESE INDICATED POINTS.

REVISIONS AND IN REVISIONS SHALL BE MADE BY THE COUNTY ENGINEER AND SHALL BE MADE BY THE COUNTY ENGINEER AND SHALL BE MADE BY THE COUNTY ENGINEER.

BEFORE WORK CAN BE STARTED, THE CONTRACTOR MUST OBTAIN A PERMIT TO EXCAVATE BY COUNTY ENGINEER FROM THE L.A. COUNTY ROAD DEPT., STATE HIGHWAY DEPT., AND MAKE A REPORT WITH THE COUNTY ENGINEER, ROOM 1521 PAM AMERICAN BLDG., 333 S.W. BROADWAY, LOS ANGELES, CALIF. THE COUNTY OF LOS ANGELES DOES NOT CONSTITUTE A REPRESENTATION AS TO THE ACCURACY OF THE LOCATION OF OR THE EXISTENCE OR NON-EXISTENCE OF ANY UNDERGROUND UTILITY PIPE, OR STRUCTURE WITHIN THE LIMITS OF THIS PROJECT. THIS NOTE APPLIES TO ALL PAGES.

IF WORK IS TO BE DONE ON A STATE HIGHWAY, A PERMIT MUST BE OBTAINED FROM THE STATE OF CALIFORNIA, DIVISION OF HIGHWAYS, 128 SOUTH BRIDGE STREET.

COUNTY OF LOS ANGELES, CALIFORNIA

APPROVED, JOHN A. LAMBE, COUNTY ENGINEER
 APPROVED, A. M. BARNY, CHIEF ENGINEER

BY: [Signature] SANITATION ENGINEER
 BY: [Signature] OFFICE ENGINEER

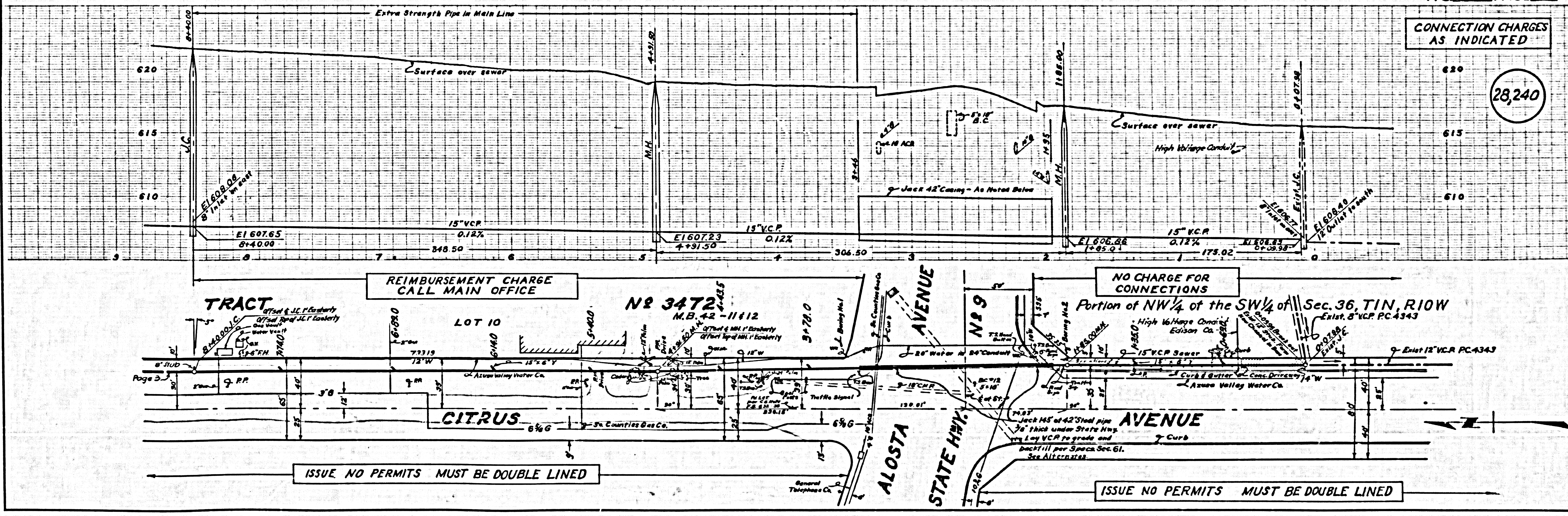
CHECKED BY: [Signature]
 OFFICE OF COUNTY ENGINEER, REG. C. & NO. 9406

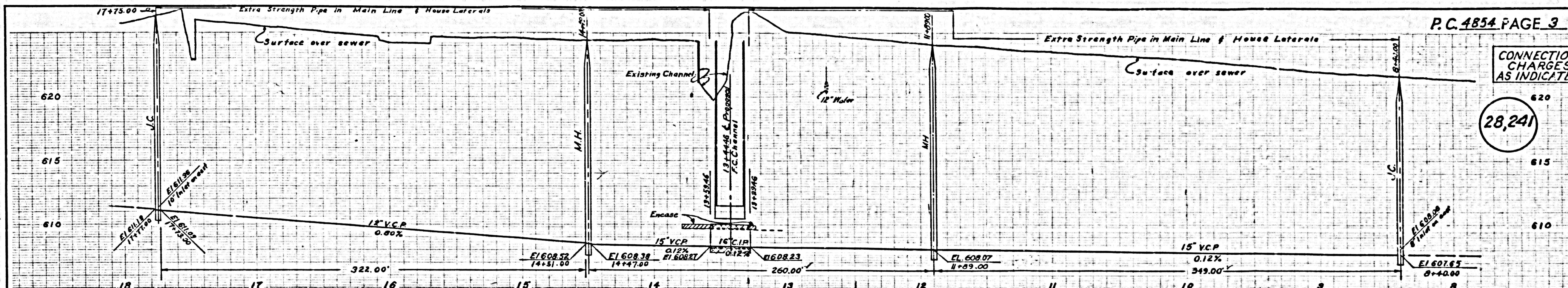
SUBMITTED: [Signature]
 SAN GABRIEL VALLEY REGIONAL ENGINEER

P.C. 4854 PAGE 2

CONNECTION CHARGES AS INDICATED

28,240

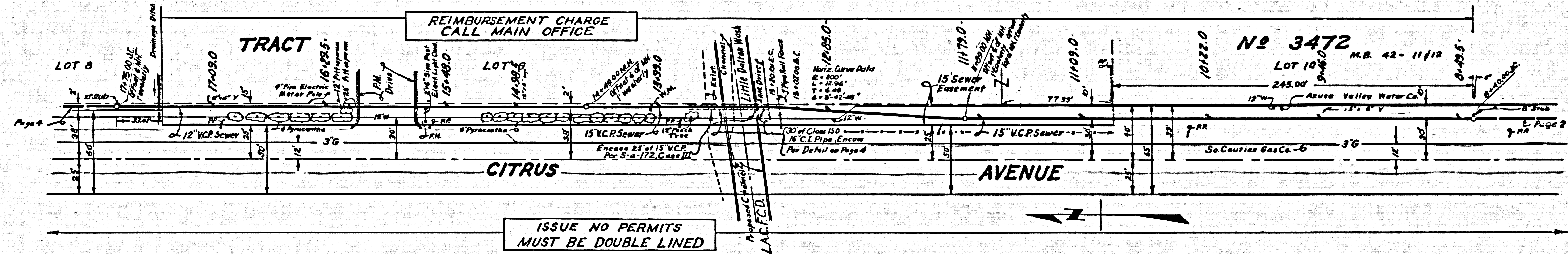




P.C. 4854 PAGE 3

CONNECTION CHARGES AS INDICATED

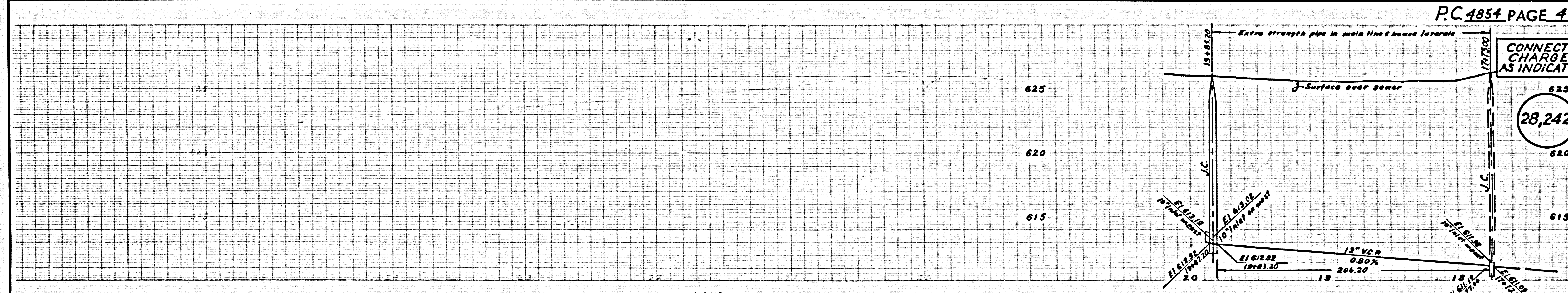
28,241



REIMBURSEMENT CHARGE CALL MAIN OFFICE

NO 3472

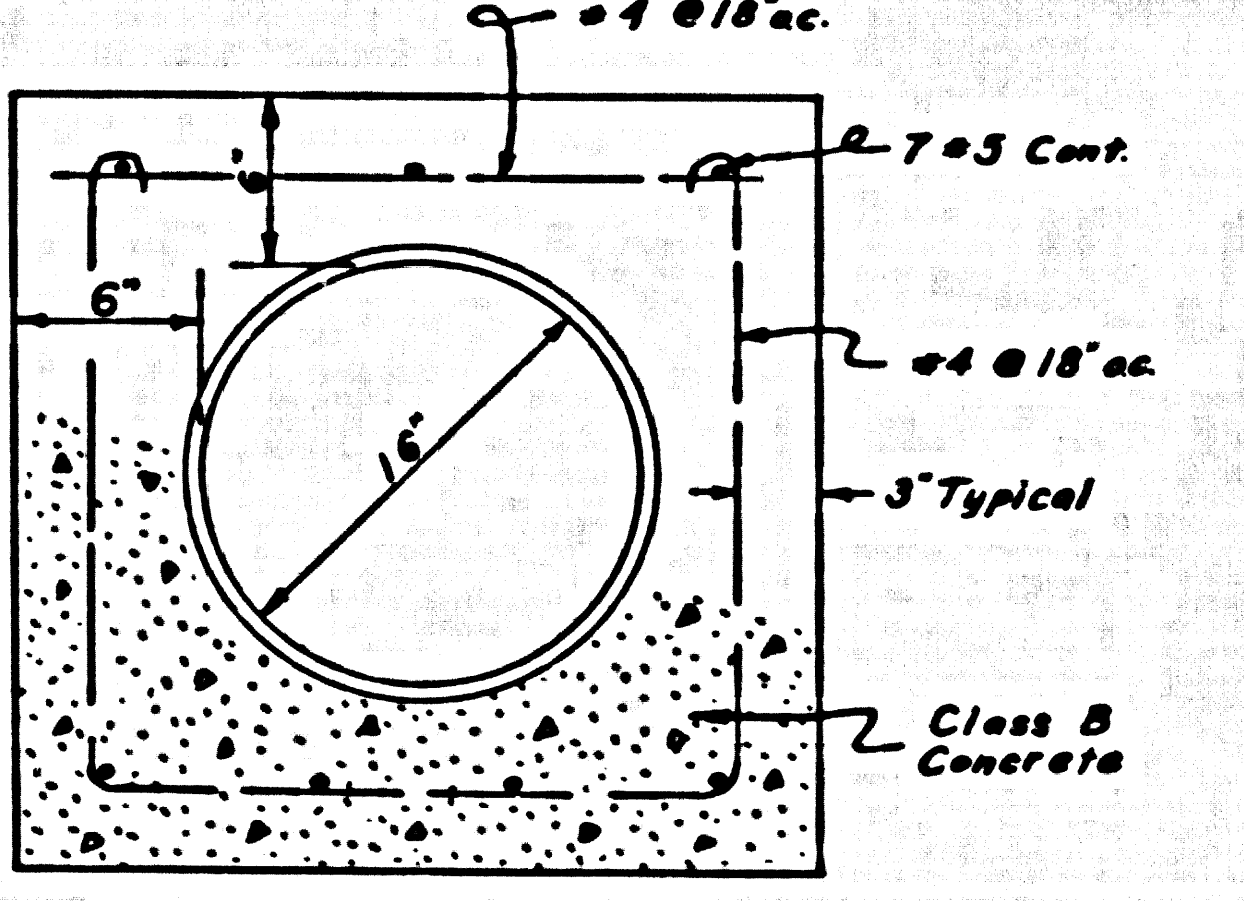
ISSUE NO PERMITS MUST BE DOUBLE LINED



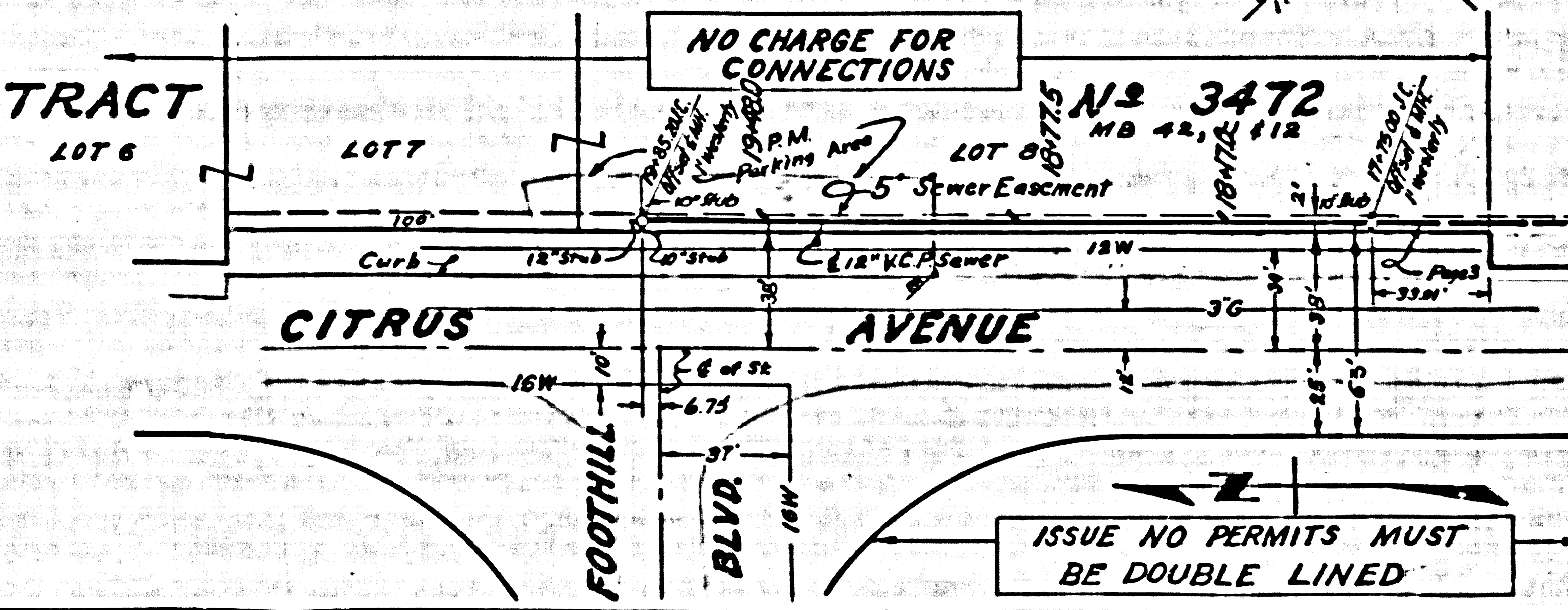
P.C. 4854 PAGE 4

CONNECTION CHARGES AS INDICATED

28,242



ENCASEMENT DETAIL FOR 16" CAST IRON PIPE
Sta. 13+29.46 to Sta. 13+53.46



NO CHARGE FOR CONNECTIONS

NO 3472

ISSUE NO PERMITS MUST BE DOUBLE LINED