

BENCH MARK
 SG 247 RESET
 L.A. COUNTY RD. DEPT. MONU.
 @ E. INT. ARROW HWY & BEN LOMOND AVE.
 (TO THE SOUTH) 1953 ADJ. # 611.971

SAN DIMAS BLDG. DIST. NO. 10

PROFILE ALIGNMENT AND GRADE OF **P.C. 4856**
SANITARY SEWERS PAGE **1**
 TO BE CONSTRUCTED IN

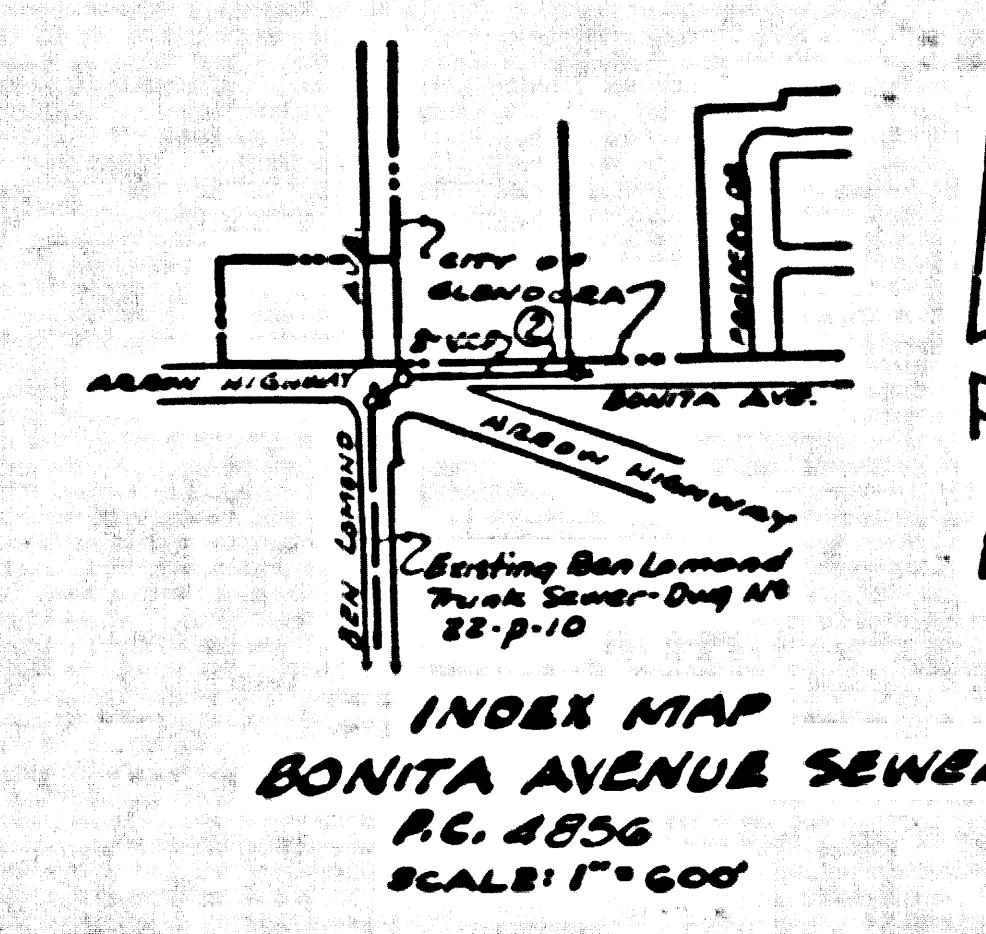
BONITA AVENUE (26,303)
PRIVATE CONTRACT NO. 4856

W.S. 47
 1 SHEETS, 2 PAGES
 SCALE: 1" = 40' JULY, 1956

PREPARED IN THE OFFICES OF
L. FREDERICK PACK
 169 W. BADILLO STREET
 LOS ANGELES, CALIFORNIA
 FOR LEGEND SEE PLAN NO. S-A-64

- NOTES**
- PROVIDE STAKES ON THE PROPERTY LINE OR PROPERTY LINES PRODUCED AT RIGHT ANGLES TO THE SEWER LINE AT THE CENTER LINE OF EACH MANHOLE.
 - NO REPRESENTATIVE OF THE COUNTY ENGINEER WILL SURVEY OR LAYOUT ANY PORTION OF THE WORK.
 - THE OWNER OR HIS AUTHORIZED REPRESENTATIVE SHALL FURNISH THE COUNTY ENGINEER WITH GRADE SHEETS AND STATION FOR ALL HOUSE LATERALS AND Y BRANCHES AND SHALL PROVIDE STAKES PLACED AT THEIR PROPER LOCATIONS WITH THE STATION AND PLAINLY MARKED. ANY CHANGE IN LOCATION SHALL BE REQUESTED IN WRITING BY THE OWNER OR HIS REPRESENTATIVE. NO REVISIONS SHALL BE MADE IN THESE PLANS WITHOUT THE APPROVAL OF THE COUNTY ENGINEER.
 - USE STANDARD MANHOLE FRAMES AND COVERS, S-A-117, EXCEPT AS NOTED.
 - USE STANDARD STRENGTH PIPE EXCEPT AS NOTED.
 - USE CEMENT MORTAR FOR ALL VITRIFIED CLAY PIPE JOINTS PER S.P.E.C.'S, SEC. 36143.
 - RESURFACE ALL TRENCH WITHIN PAVED AREA TO MEET L.A. COUNTY ROAD DEPT. OR CALIF. STATE HIGHWAY DEPT. REQUIREMENTS IN ACCORDANCE WITH POINTS.
 - INCASE FOUR FEET OF SEWER AT POINTS OF INTERFERENCE WITH POLES, CASE 27, S-3-172.
 - HOUSE LATERALS TO BE CONSTRUCTED WITH INVERTS AT PROPERTY LINE - 6" FEET BELOW FINISHED GRADE EXCEPT AS NOTED.
 - ALL STRUCTURES SHALL BE BRICK SEWER STRUCTURES, S-A-104, EXCEPT AS NOTED.
 - FOR ALLOWABLE LEAKAGE TEST USE FORMULA NO. 1 SPEC'S, SEC. 56.
 - MANHOLE TOPS IN UNIMPROVED RIGHTS-OF-WAY TO BE 6" ABOVE FINISHED GRADE.
 - THE PRIVATE ENGINEER IS TO FURNISH THE HOUSE LATERAL DEPTH AT THE PROPERTY LINE BELOW THE TOP OF CURB ELEVATION FOR EACH HOUSE LATERAL, ON THE GRADE SHEET.
 - THE CONTRACTOR SHALL NOTIFY THE CONSTRUCTION AND STREAM DRAIN DIVISION BY TELEPHONE AND ADVISE BY MAIL AT LEAST 24 HOURS BEFORE STARTING ANY WORK UNDER THIS CONTRACT.

APPROVED BY CITY OF GLENDORA
Paula...
 City Engineer
 DATE July 17, 1956



CONNECTION CHARGES AS INDICATED
Goldthorn 8/16

NOTES

GRADES TO WHICH THIS IMPROVEMENT IS TO BE CONSTRUCTED ARE SHOWN ON PLANS AND PROFILE GRADE POINTS FOR TOP OF CURBS, CENTER LINE OF STREETS, OR CENTER LINE OF ALLEYS ARE SHOWN BY CIRCLES ON PROFILES AT ALL POINTS BETWEEN DESIGNATED POINTS THE GRADE SHALL BE ESTABLISHED SO AS TO CONFORM TO A STRAIGHT LINE DRAWN BETWEEN SAID DESIGNATED POINTS.

ELEVATIONS AND INVERT ABOVE U.S.C. & G.S. SEA LEVEL, BALANCE OF PAGES THIS DRAWING AND THE DATA HEREON AND HEREIN SHALL BE A PART OF THE SPECIFICATIONS.

WORK SHALL BE CONSTRUCTED ACCORDING TO SPECIFICATIONS ON FILE IN THE OFFICES OF THE COUNTY ENGINEER AND SHALL BE PRODUCED ONLY IN THE PRESENCE OF THE COUNTY ENGINEER.

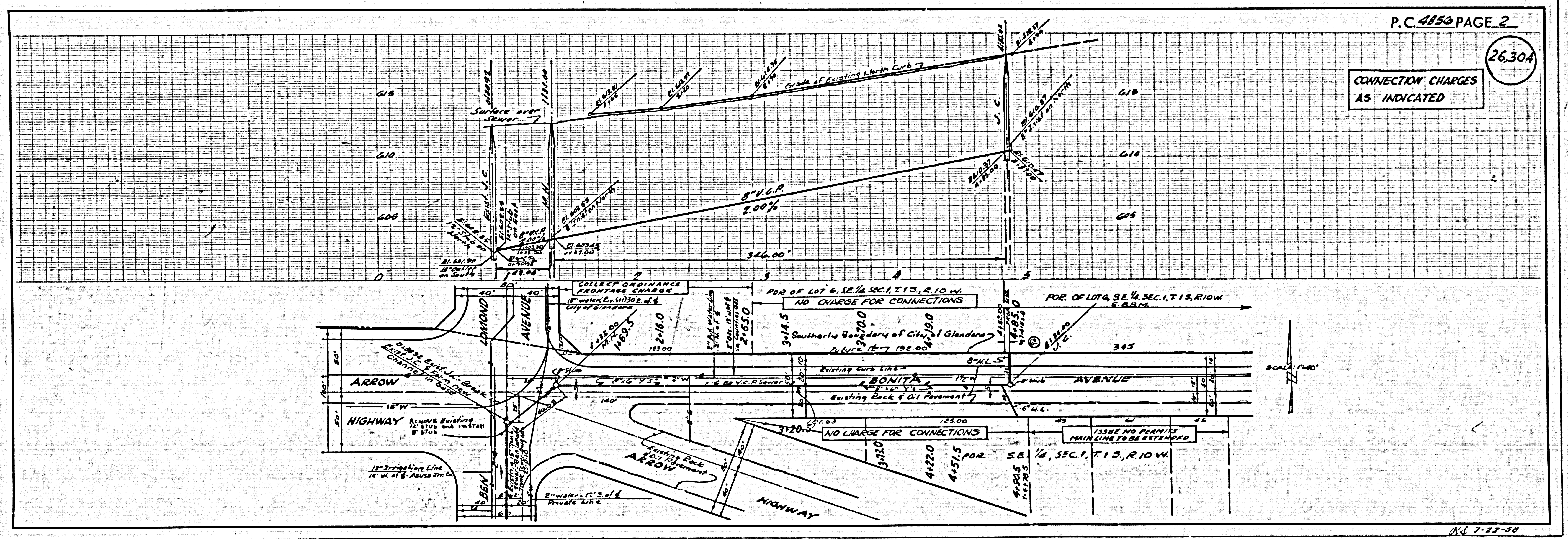
BEFORE WORK CAN BE STARTED, THE CONTRACTOR MUST OBTAIN A PERMIT TO EXCAVATE BY COUNTY STREET FROM THE L.A. COUNTY ROAD DEPARTMENT AND MUST MAKE A REPORT WITH THE COUNTY ENGINEER, ROOM 304 MAIN AMERICAN BUILDING, 235 SO. BROADWAY SUFFICIENT TO COVER THE COST OF CONSTRUCTION INSPECTION AND RECORD PLANS.

APPROVAL OF THIS PLAN BY THE COUNTY OF LOS ANGELES DOES NOT CONSTITUTE A REPRESENTATION AS TO THE ACCURACY OF THE LOCATION OF OR THE EXISTENCE OR NON-EXISTENCE OF ANY UNDERGROUND UTILITY PIPE, OR STRUCTURE WITHIN THE LIMITS OF THIS PROJECT THIS NOTE APPLIES TO ALL PAGES.

IF WORK IS TO BE DONE IN A STATE HIGHWAY, A PERMIT MUST BE OBTAINED FROM THE STATE OF CALIFORNIA, DIVISION OF HIGHWAYS, 120 SOUTH SPRING STREET.

COUNTY OF LOS ANGELES, CALIFORNIA

APPROVED, JOHN A. LAMBE, COUNTY ENGINEER APPROVED, A. M. RAWL, CHIEF ENGINEER
 BY *L. F. Pack* SAN TEST NO. 22
 SANITATION ENGINEER OFFICE ENGINEER
 CHECKED BY *W. White* 8-12-56
 OFFICE OF COUNTY ENGINEER, R.M. & E. NO. 3406



BONITA AVENUE P.C. 4856

P.C. 4856