

B.M. 35-4 C.S.B.M. 58 FB 1356-10, 0.8 mi. S South Palos Verdes Drive North. Large bolt spike in lead in top most W. corner of concrete NW @ NW end of 7th C.I.P. Culvert. Elevation 138976

LOMITA BLDG. DIST. NO. 71

PROFILE ALIGNMENT AND GRADE OF
SANITARY SEWERS P.C. 4861
 TO BE CONSTRUCTED IN PAGE 1
TRACT NO. 21379 26,858

PRIVATE CONTRACT NO. 4661

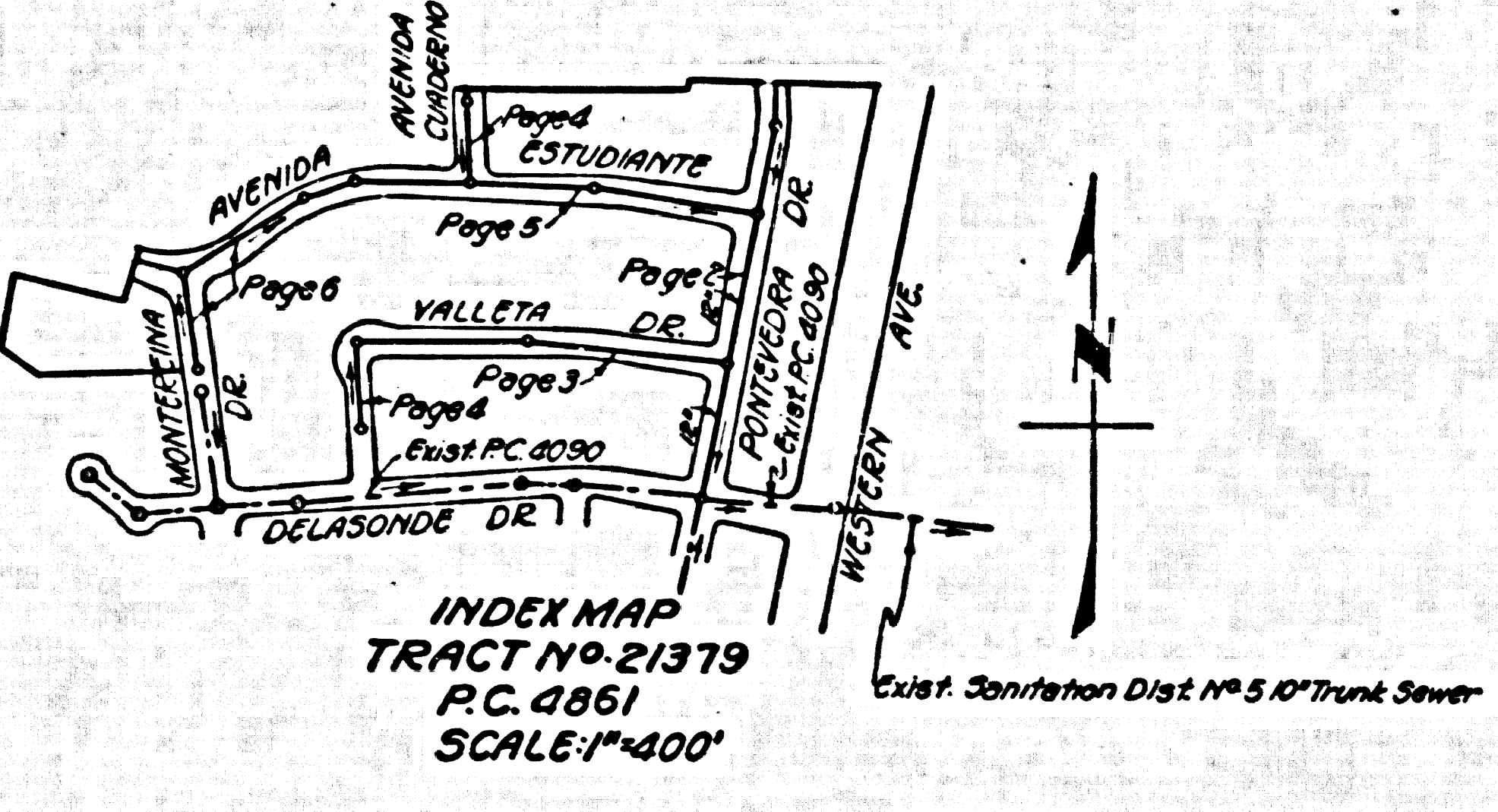
W.S. 28
 3 SHEETS, 6 PAGES
 SCALE: VERT. 1" = 4' HORIZ. 1" = 40'
 JULY, 1958
 PREPARED IN THE OFFICES OF

DEVELOPMENT CONSULTANTS INC.
 490 E. WALNUT ST. PASADENA, CAL.
 REG. C. E. NO. 3533

FOR LEGEND SEE PLAN NO. S-A-64

- NOTE
1. PROFILE STAKES ON THE PROPERTY LINE OR PROPERTY LINES PRODUCED AT RIGHT ANGLES TO THE SEWER LINE AT THE CENTER LINE OF EACH MANHOLE.
 2. NO REPRESENTATIVE OF THE COUNTY ENGINEER WILL SURVEY OR LAY OUT ANY PORTION OF THE WORK.
 3. THE OWNER OR HIS AUTHORIZED REPRESENTATIVE SHALL FURNISH THE COUNTY ENGINEER WITH GRADE SHEETS AND STATIONING FOR ALL HOUSE LATERALS AND T-BRANCHES AND SHALL PROVIDE STAKES FOR THEM AT THEIR PROPER LOCATIONS WITH STATIONING PLAINLY MARKED. ANY CHANGE IN LOCATION SHALL BE REQUESTED IN WRITING BY THE OWNER OR HIS REPRESENTATIVE.
 4. THE PRIVATE ENGINEER SHALL FURNISH THE HOUSE LATERAL DEPTH AT THE PROPERTY LINE BELOW THE TOP OF CURB ELEVATION FOR EACH HOUSE LATERAL ON THE GRADE SHEET.
 5. NO REVISIONS SHALL BE MADE IN THESE PLANS WITHOUT THE APPROVAL OF THE COUNTY ENGINEER.
 6. USE STANDARD MANHOLE FRAMES AND COVERS, S-6-117, EXCEPT AS NOTED.
 7. USE STANDARD STRENGTH PIPE EXCEPT AS NOTED.
 8. USE STANDARD MORTAR OR "WEDGE LOCK" OR "SPRY-SEAL" FOR J.M. Y.C.P. JOINTS PER SPEC., SECS. 30 & 31.
 9. RESURFACE ALL TRENCH WITHIN PAVED AREA TO MEET L.A. COUNTY ROAD DEPT. OR CALIF. STATE HIGHWAY REQUIREMENTS IN ACCORDANCE WITH PERMITS.
 10. ENCASE FOUR FEET OF SEWER AT POINTS OF INTERFERENCE WITH POLES, CASE III, S-6-172.
 11. HOUSE LATERALS TO BE CONSTRUCTED WITH INVERTS AT PROPERTY LINE $\frac{1}{2}$ FOOT BELOW CURB GRADE EXCEPT AS NOTED.
 12. ALL STRUCTURES SHALL BE SPICE SEWER STRUCTURES, S-6-164, EXCEPT AS NOTED.
 13. FOR ALLOWABLE BRIDGE TEST USE FORMULA NO. 1 - SPEC., SEC. 34.
 14. MANHOLE TOPS IN UNIMPROVED AREAS TO BE 6 INCHES ABOVE FINISH GRADE.
 15. THE CONTRACTOR SHALL NOTIFY THE CONSTRUCTION & STORM DRAIN DIVISION BY TELEPHONE, RADIOSH. 9-02, EXT. 34, AT LEAST TWENTY-FOUR HOURS BEFORE STARTING ANY WORK UNDER THIS CONTRACT.
 16. NO CONSTRUCTION WILL BE PERMITTED IN FILLED AREAS UNLESS ACCURATE CERTIFICATION IS SUBMITTED TO THE CONSTRUCTION DIVISION OF THE COUNTY ENGINEER'S DEPARTMENT THAT RELATIVE COMPACTION IS GREATER THAN 80%.
 17. IF COMPACTION IS LESS THAN 80%, THE SEWER MUST BE CRADLED AS SHOWN ON THE PLAN'S PER S-6-165.
 18. IF COMPACTION IS GREATER THAN 80%, CRADLES AND SPECIAL MEN BASES ARE NOT REQUIRED, HOWEVER JOINT COMPOUND MUST BE SUBSTITUTED FOR CEMENT MORTAR AND ALL JOINTS IN FILLED AREAS.
- NOTE: LOT NOS. 1, 4, 5, 6, 7, 8, 9, 33, 34 AND 35 ARE SERVED BY HOUSE LATERALS CONSTRUCTED BY P.C. 4093
- LOT PERMIT NO.
 31
 32
 33
 34
19. ALL HOUSE LATERALS OR MAIN LINE SEWERS CROSSING STORM DRAIN LOTS OTHERWISE CRADLED, SHALL BE CRADLED PER S-6-172, CASE III

NO CHARGE FOR CONNECTION
 C. H. Pearson



NOTE: SEWERS TO WHICH THIS IMPROVEMENT IS TO BE CONSTRUCTED AND SHOWN ON PLANS AND PROFILES, GRADE POINTS FOR TOP OF CURB, CENTER LINE OF STREETS, OR CENTER LINE OF ALLEYS ARE SHOWN BY CIRCLES ON PROFILES. AT ALL POINTS BETWEEN DESIGNATED POINTS THE GRADE SHALL BE ESTABLISHED SO AS TO CONFORM TO A STRAIGHT LINE DRAWN BETWEEN SAID DESIGNATED POINTS.

REVISIONS ARE IN PENCIL ABOVE S.E.C. & S.S. SEA LEVEL DATUM OF 1929.

THIS DRAWING AND THE DATA HEREON ARE HEREBY MADE A PART OF THE SPECIFICATIONS.

WORK SHALL BE CONSTRUCTED ACCORDING TO SPECIFICATIONS ON FILE IN THE OFFICE OF THE COUNTY ENGINEER AND SHALL BE PROSECUTED ONLY IN THE PRESENCE OF THE COUNTY ENGINEER.

BEFORE WORK CAN BE STARTED, THE CONTRACTOR MUST OBTAIN A PERMIT TO EXCAVATE IN COUNTY STREETS FROM THE E. A. COUNTY ROAD DEPT., DISTRICT OFFICE NO. 1, AND MAKE A REPORT WITH THE COUNTY ENGINEER, ROOM 324 PAN AMERICAN BUILDING, 222 SO. HIGHWAY 101, TO COVER THE COST OF CONSTRUCTION INSPECTION AND RECORD PLANS.

APPROVAL OF THIS PLAN BY THE COUNTY OF LOS ANGELES DOES NOT CONSTITUTE A REPRESENTATION AS TO THE ACCURACY OF THE LOCATION OF OR THE EXISTENCE OR NON-EXISTENCE OF ANY UNDERGROUND UTILITY PIPES OR STRUCTURE WITHIN THE LIMITS OF THIS PROJECT. THIS NOTE APPLIES TO ALL PAGES.

IF WORK IS TO BE DONE IN A STATE HIGHWAY, A PERMIT MUST BE OBTAINED FROM THE STATE OF CALIFORNIA, DIVISION OF HIGHWAYS, 138 SOUTH SPRING STREET.

COUNTY OF LOS ANGELES, CALIFORNIA

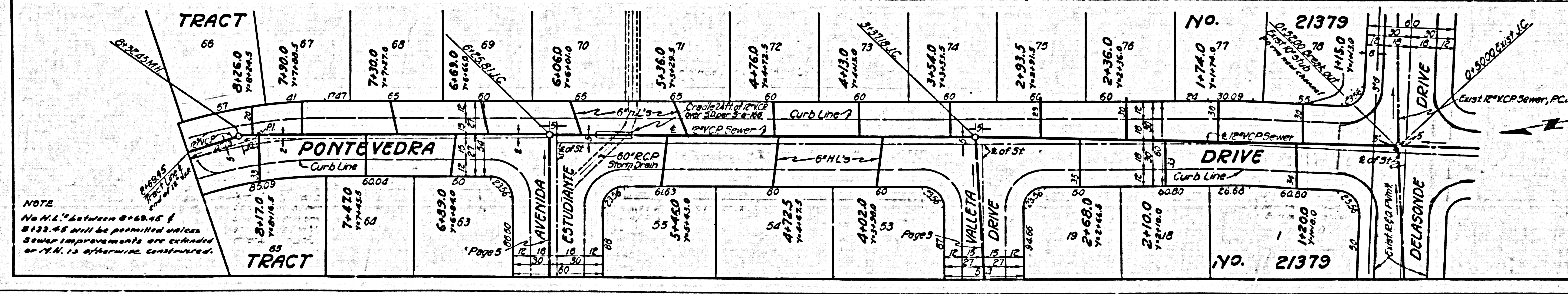
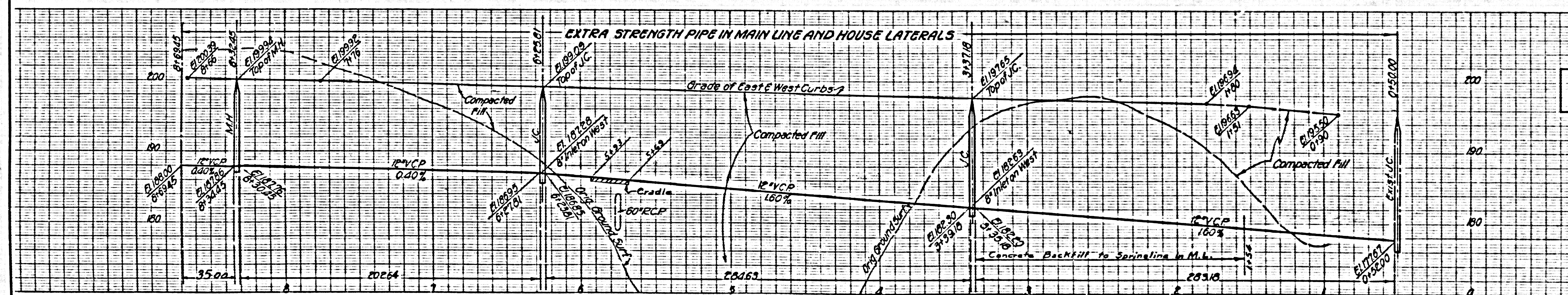
APPROVED, JOHN A. LAMBE, COUNTY ENGINEER
 APPROVED, A. M. BAWN, CHIEF ENGINEER
 SANITATION ENGINEER
 OFFICE ENGINEER

CHECKED BY: *[Signature]* 7-21-58
 OFFICE OF COUNTY ENGINEER, S.E.C. & S.S. 2406

P.C. 4861 PAGE 2

DOUBLE SCALE

NO CHARGE FOR CONNECTION
 26,858



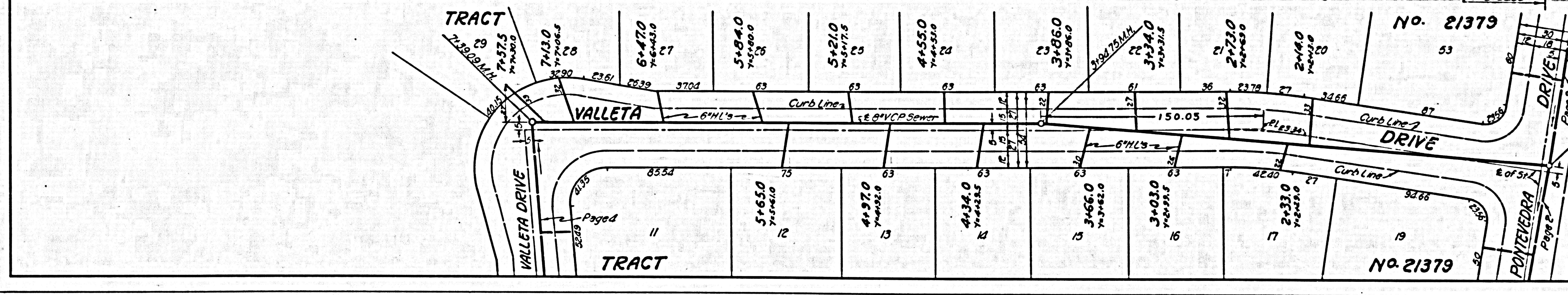
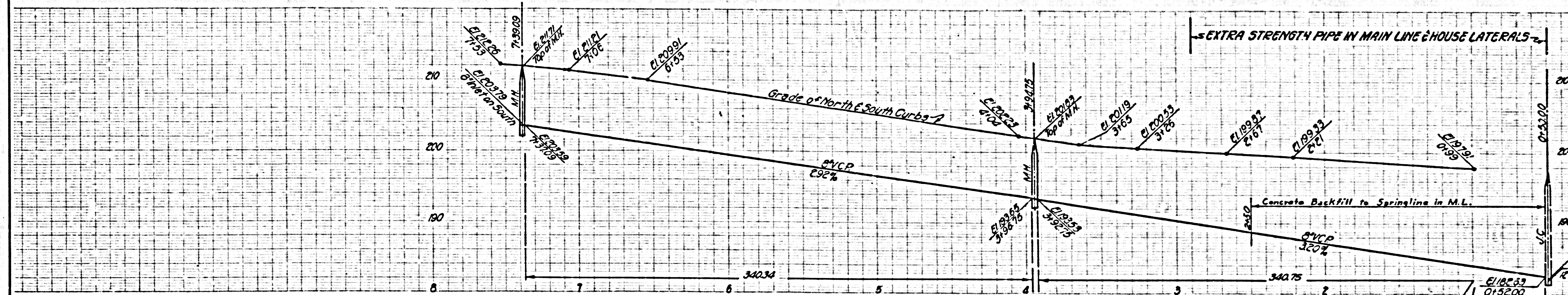
NOTE: No M.H.'s between 8+63.45 & 8+33.45 will be permitted unless sewer improvements are extended on 7th. Is otherwise constructed.

RD 8-6-58

DOUBLE SCALE

NO CHARGE FOR CONNECTION

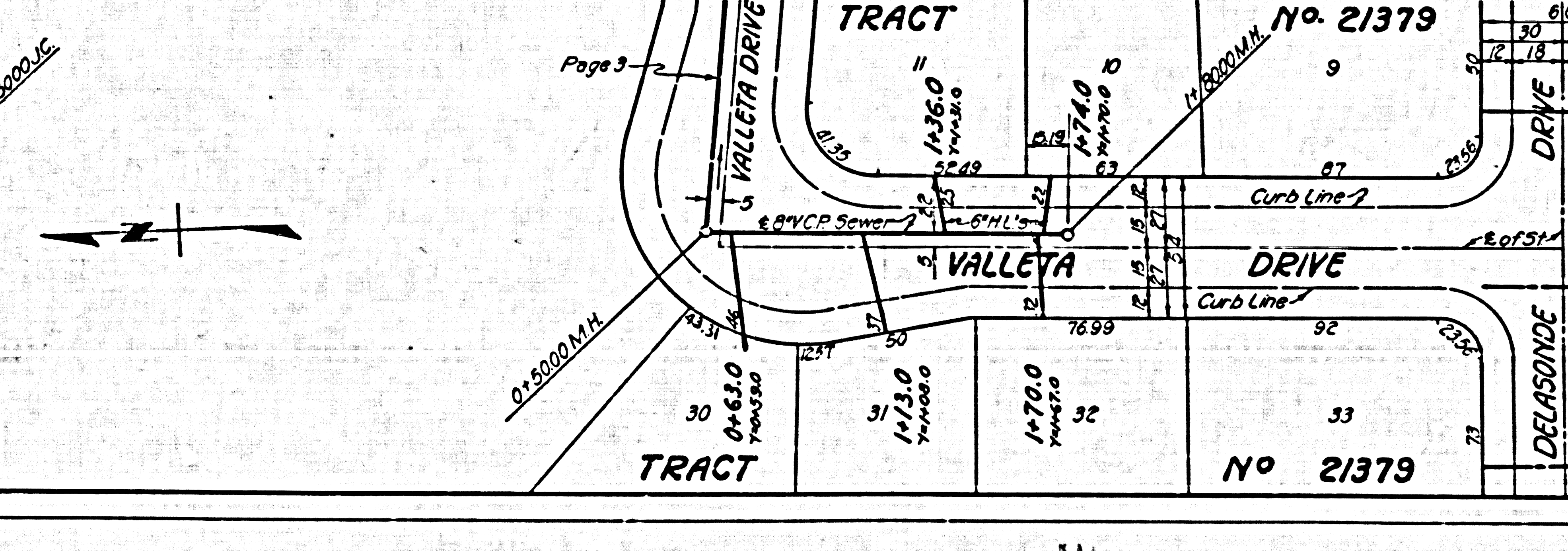
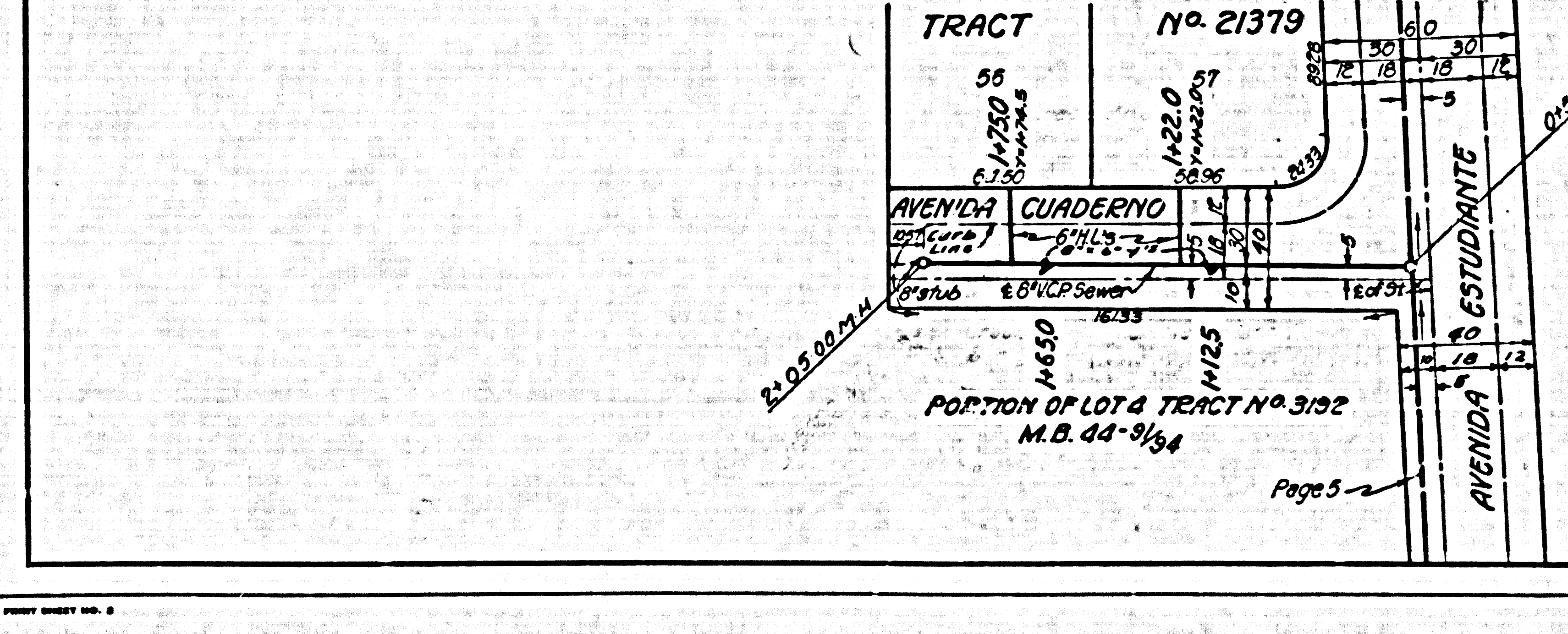
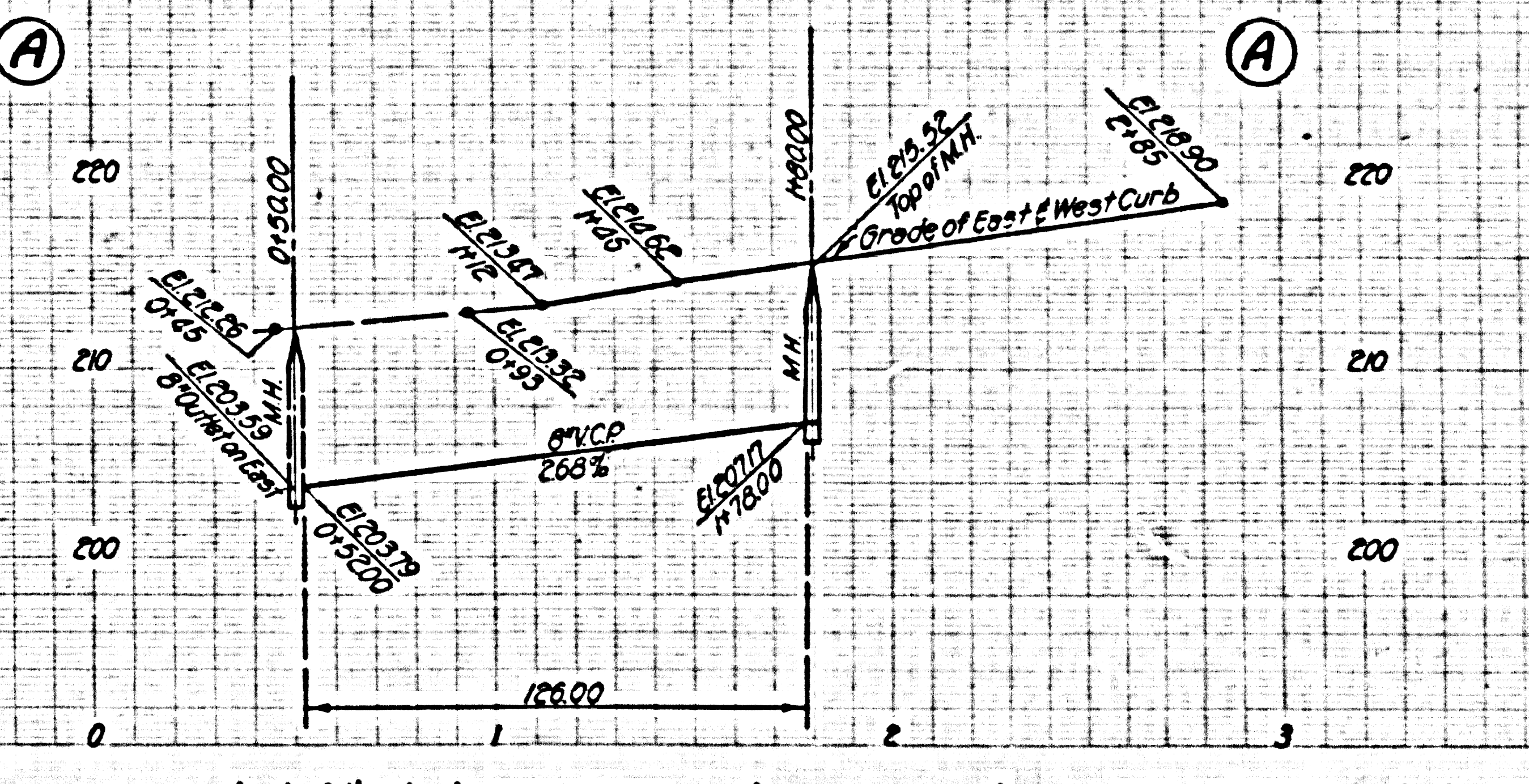
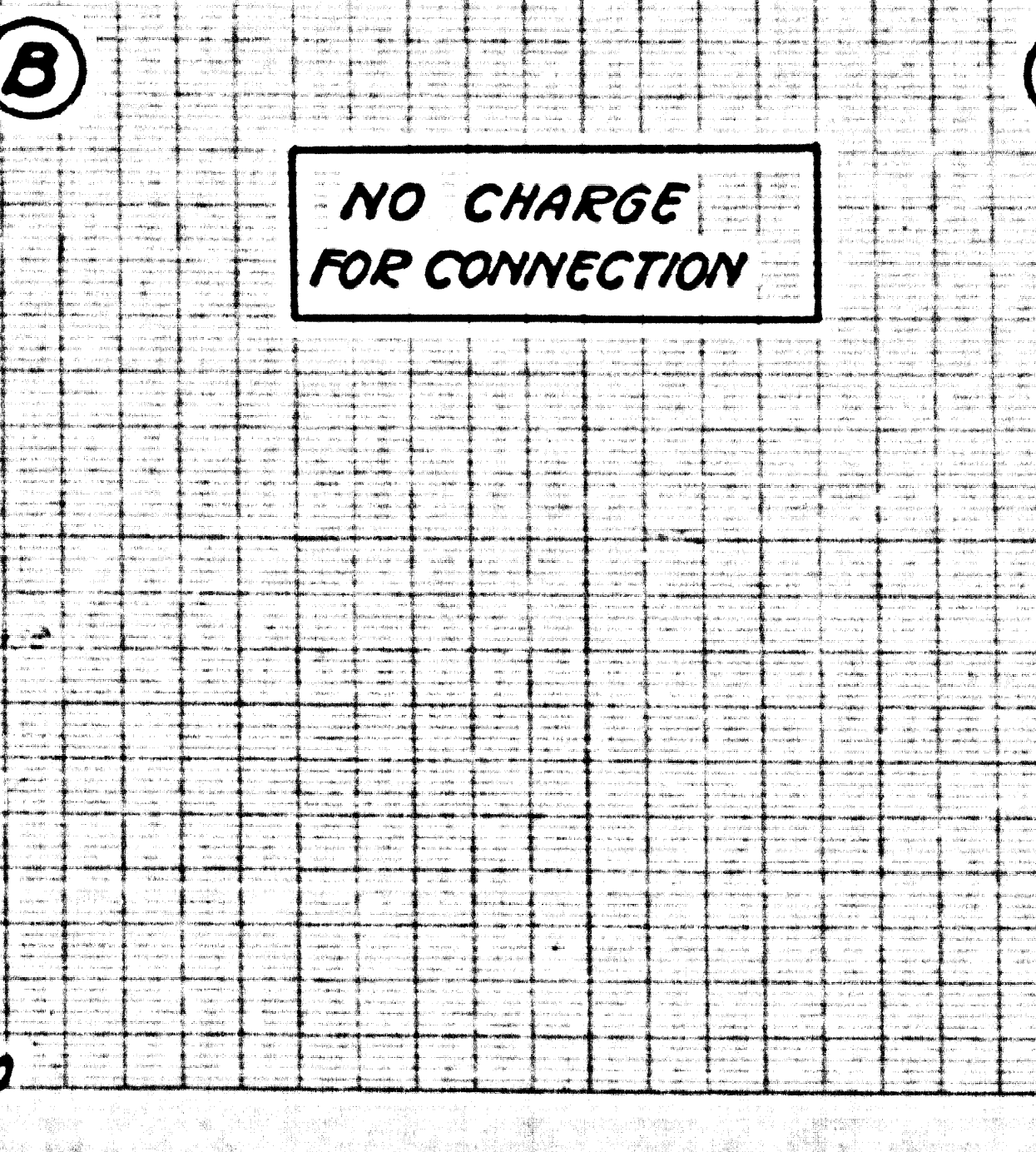
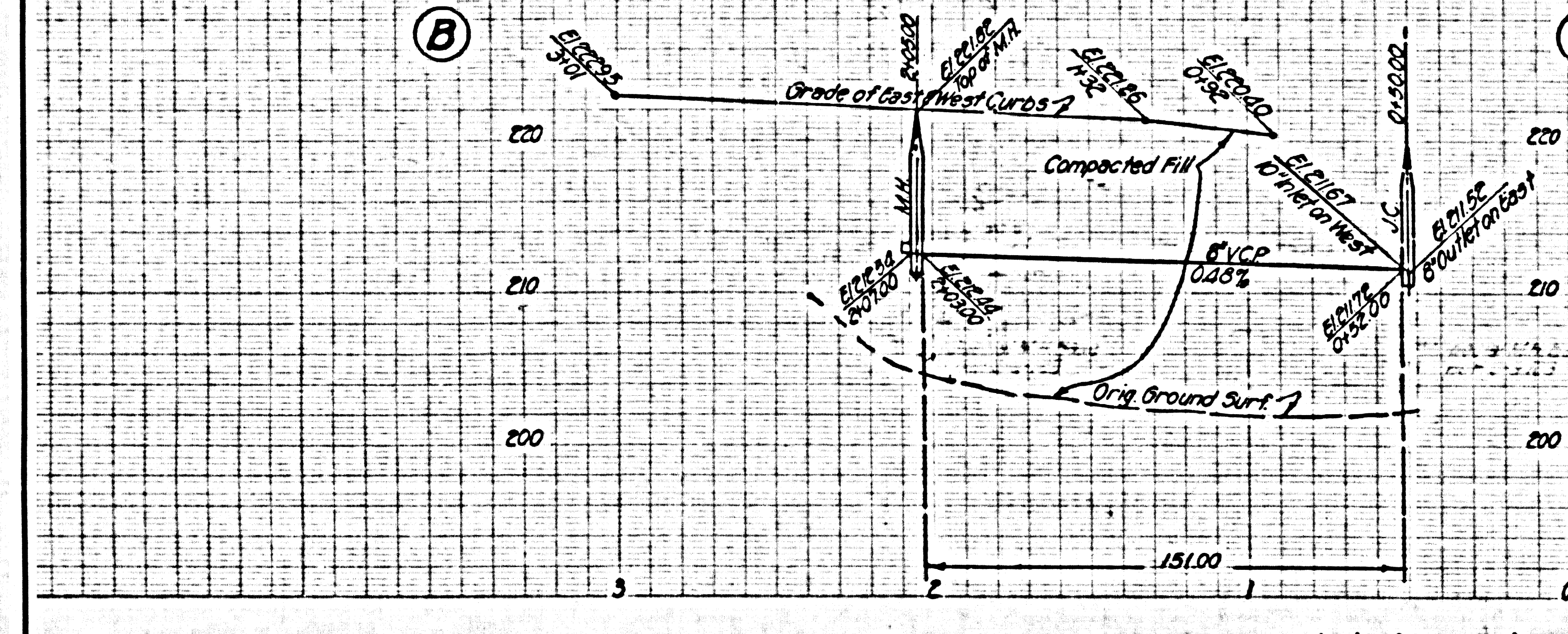
26,860

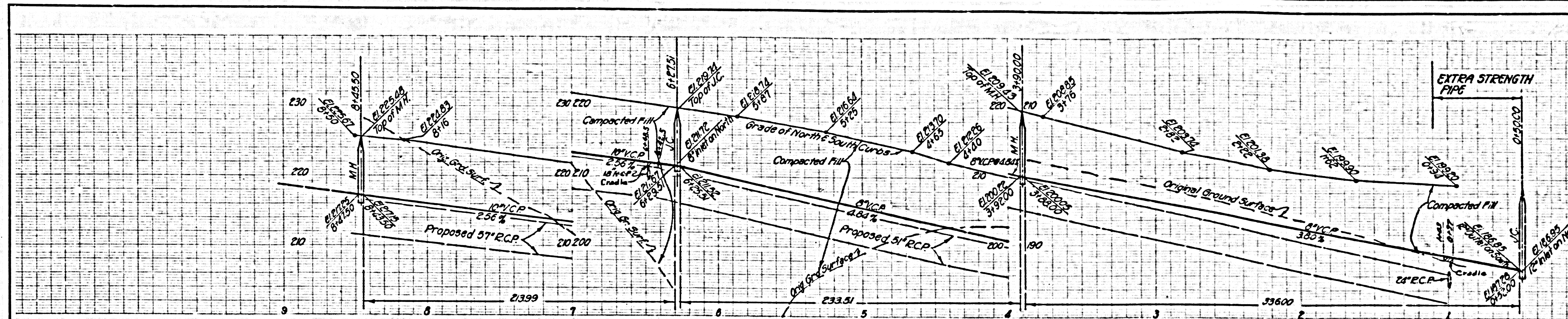


DOUBLE SCALE

NO CHARGE FOR CONNECTION

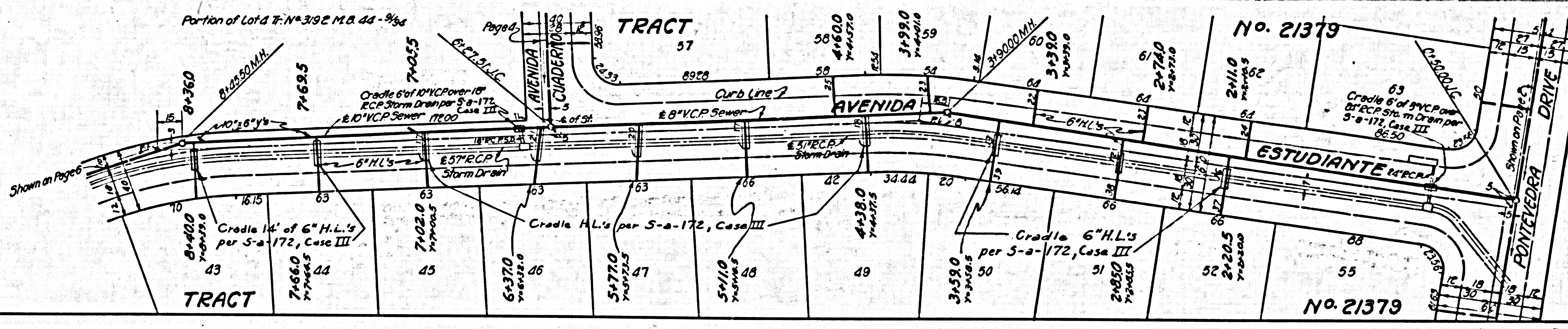
26,861





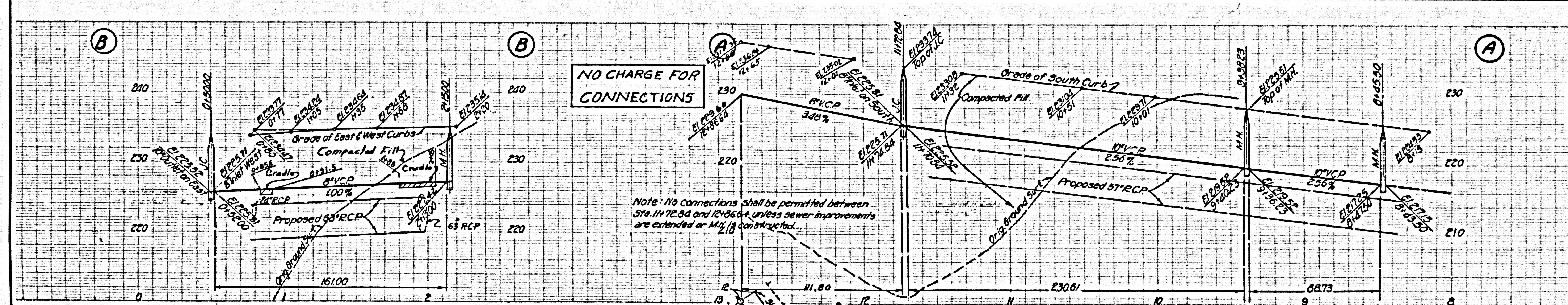
NO CHARGE FOR CONNECTIONS

26,862



PL 8-6-58

MH J.C. MH

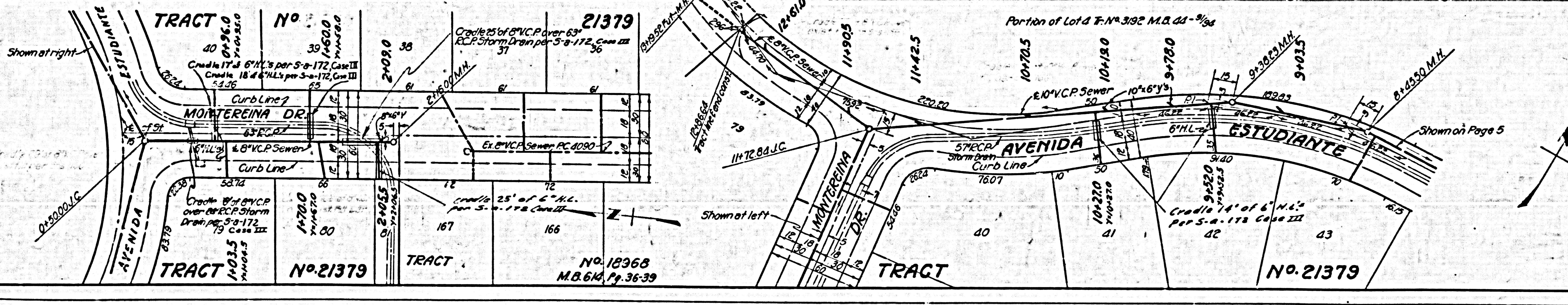


NO CHARGE FOR CONNECTIONS

NO CHARGE FOR CONNECTIONS

26,863

Note: No connections shall be permitted between 5\"/>



PL 8-6-58

MH J.C. MH