

LOMITA BLDG. DIST. NO. 7.1

PROFILE ALIGNMENT AND GRADE OF P.C. 4862  
SANITARY SEWERS PAGE 1  
TO BE CONSTRUCTED IN  
MEYLER STREET 26,556  
BETWEEN 223 RD ST. & 228TH ST.

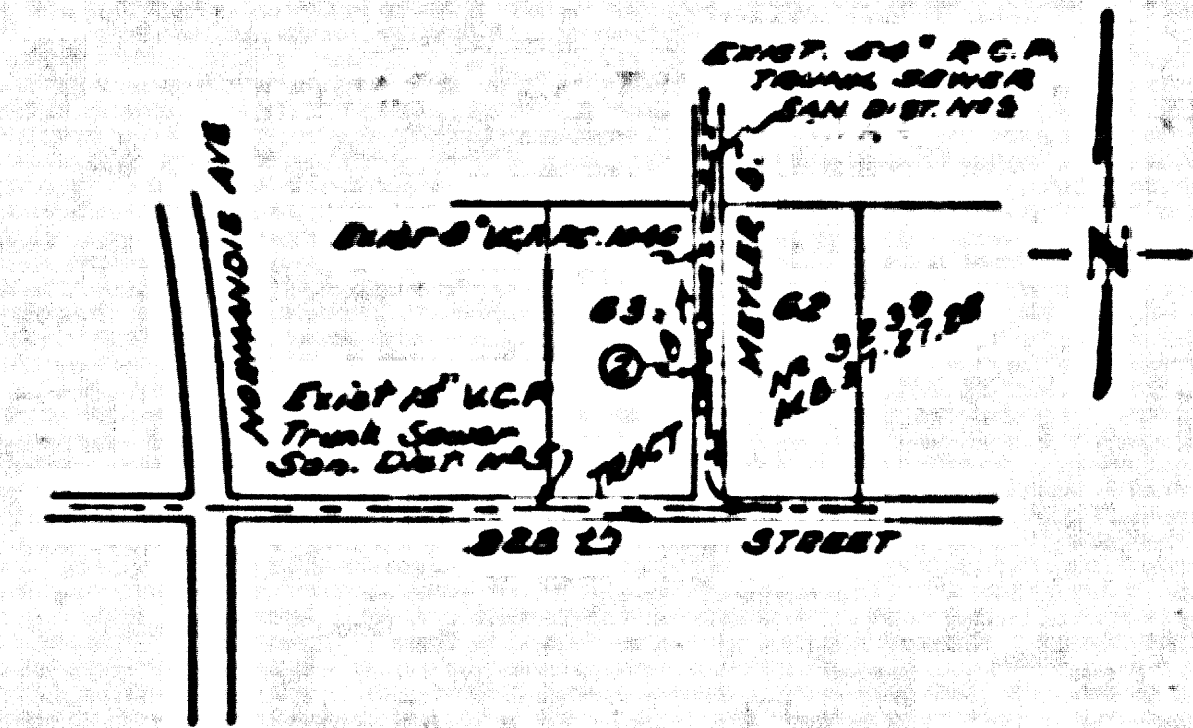
PRIVATE CONTRACT NO. 4862

W.S. 28  
1 SHEETS, 2 PAGES  
SCALE: HORIZ. 1"=60'  
VERT. 1"=8'  
PREPARED IN THE OFFICES OF  
SOUTH BAY ENGINEERING CO.  
By Raymond Langley  
REG. C. E. NO. 1191

- NOTES:
- PROVIDE STAKES ON THE PROPERTY LINE OR PROPERTY LINES PRODUCED AT RIGHT ANGLES TO THE SEWER LINE AT THE CENTER LINE OF EACH MANHOLE.
  - NO REPRESENTATIVE OF THE COUNTY ENGINEER WILL SURVEY OR LAYOUT ANY PORTION OF THE WORK.
  - THE OWNER OR HIS AUTHORIZED REPRESENTATIVE SHALL FURNISH THE COUNTY ENGINEER WITH GRADE SHEETS AND STATION FOR ALL HOUSE LATERALS AND Y BRANCHES AND SHALL PROVIDE STAKES FOR THEM AT THEIR WORKING LOCATIONS WITH STATIONS AND PLANNED MARKERS. ANY CHANGE IN LOCATION SHALL BE REQUESTED BY WRITING BY THE OWNER OR HIS REPRESENTATIVE.
  - NO REVISIONS SHALL BE MADE IN THESE PLANS WITHOUT THE APPROVAL OF THE COUNTY ENGINEER.
  - USE STANDARD MANHOLE FRAMES AND COVERS, S.A. 117, EXCEPT AS NOTED.
  - USE STANDARD STRENGTH PIPE EXCEPT AS NOTED.
  - USE CELESTIAL MORTAR IN SINKING-ARCH "SINK" JOINTS - "SINK" JOINTS SHALL BE 3/4" DIA. JOINTS PER S.A. 117, SECTION 108.
  - RESURFACE ALL TRENCH WITHIN PAVED AREA TO MEET L. A. COUNTY ROAD DEPT. OR CALIF. STATE HIGHWAY DEPT. SPECIFICATIONS IN ACCORDANCE WITH PERMITS.
  - INDICATE FOUR FEET OF SEWER AT POINTS OF INTERFERENCE WITH POLES, SEE S.A. 117, SECTION 108.
  - HOUSE LATERALS TO BE CONSTRUCTED WITH INVERTS AT PROPERTY LINE - SEE S.A. 117, SECTION 108, EXCEPT AS NOTED.
  - FOR ALLOWABLE HEADROOM REFER TO FORMULA NO. 1 PER S.A. 117, SECTION 108.
  - MANHOLE TOPS IN UNIMPROVED AREAS SHALL BE 6" ABOVE FINISHED GRADE.
  - THE CONTRACTOR SHALL NOTIFY THE CONSTRUCTION AND STORM DRAIN DIVISION BY TELEPHONE, MADISON 54747 EXT. 362, AT LEAST 24 HOURS BEFORE STARTING ANY WORK UNDER THIS CONTRACT.

BENCH MARK D. DEPT.  
B.M. 43-9 Elev. 46.300 ft.  
Mon. 84.53' No. of 6 int. of  
Normandie Ave & Ocean Ave.,  
25.81 ft. N. of 6 Normandie,  
2 ft. N. of N. Curb.  
Gardens Quad 1955

CONNECTION CHARGES  
AS INDICATED  
L. Curtis 7-15-58



INDEX MAP  
SCALE 1"=600'

FOR LEGEND SEE PLAN NO. S-A-64

NOTES:

GRADES TO WHICH THE IMPROVEMENT IS TO BE CONSTRUCTED ARE SHOWN ON PLANS AND PROFILES. GRADE POINTS FOR TOP OF CURB, CENTER LINE OF STREET, OR CENTER LINE OF ALLEYS ARE SHOWN BY CIRCLES ON PROFILES AT ALL POINTS BETWEEN DESIGNATED POINTS. THE GRADE SHALL BE ESTABLISHED SO AS TO CONFORM TO A STRAIGHT LINE BETWEEN SAID DESIGNATED POINTS.

ELEVATIONS ARE IN FEET ABOVE U.S.C. & G.S. SEA LEVEL DATUM OF 1929.

THIS DRAWING AND THE DATA HEREON ARE HEREBY MADE A PART OF THE SPECIFICATIONS.

WORK SHALL BE CONSTRUCTED ACCORDING TO SPECIFICATIONS ON FILE IN THE OFFICE OF THE COUNTY ENGINEER AND SHALL BE PROSECUTED ONLY IN THE PRESENCE OF THE COUNTY ENGINEER.

BEFORE WORK CAN BE STARTED THE CONTRACTOR MUST OBTAIN A PERMIT TO EXCAVATE IN COUNTY DISTRICT FROM THE L. A. COUNTY ROAD DEPT. DISTRICT NO. 8, AND MAKE A DEPOSIT WITH THE COUNTY ENGINEER, ROOM 334 SAN AMERICAN BUILDING, 330 SO. HOUGHTON ST. LOS ANGELES, CALIF., TO COVER THE COST OF CONSTRUCTION INSPECTION AND RECORD PLANS.

APPROVAL OF THIS PLAN BY THE COUNTY OF LOS ANGELES DOES NOT CONSTITUTE A REPRESENTATION AS TO THE ACCURACY OF THE LOCATION OR OF THE EXISTENCE OR NON-EXISTENCE OF ANY UNDERGROUND UTILITY PIPE, OR STRUCTURE WITHIN THE LIMITS OF THIS PROJECT. THE NOTE APPLIES TO ALL PAGES.

IF WORK IS TO BE DONE IN A STATE HIGHWAY, A PERMIT MUST BE OBTAINED FROM THE STATE OF CALIFORNIA, DIVISION OF HIGHWAYS, 120 SOUTH BRIDGE STREET.

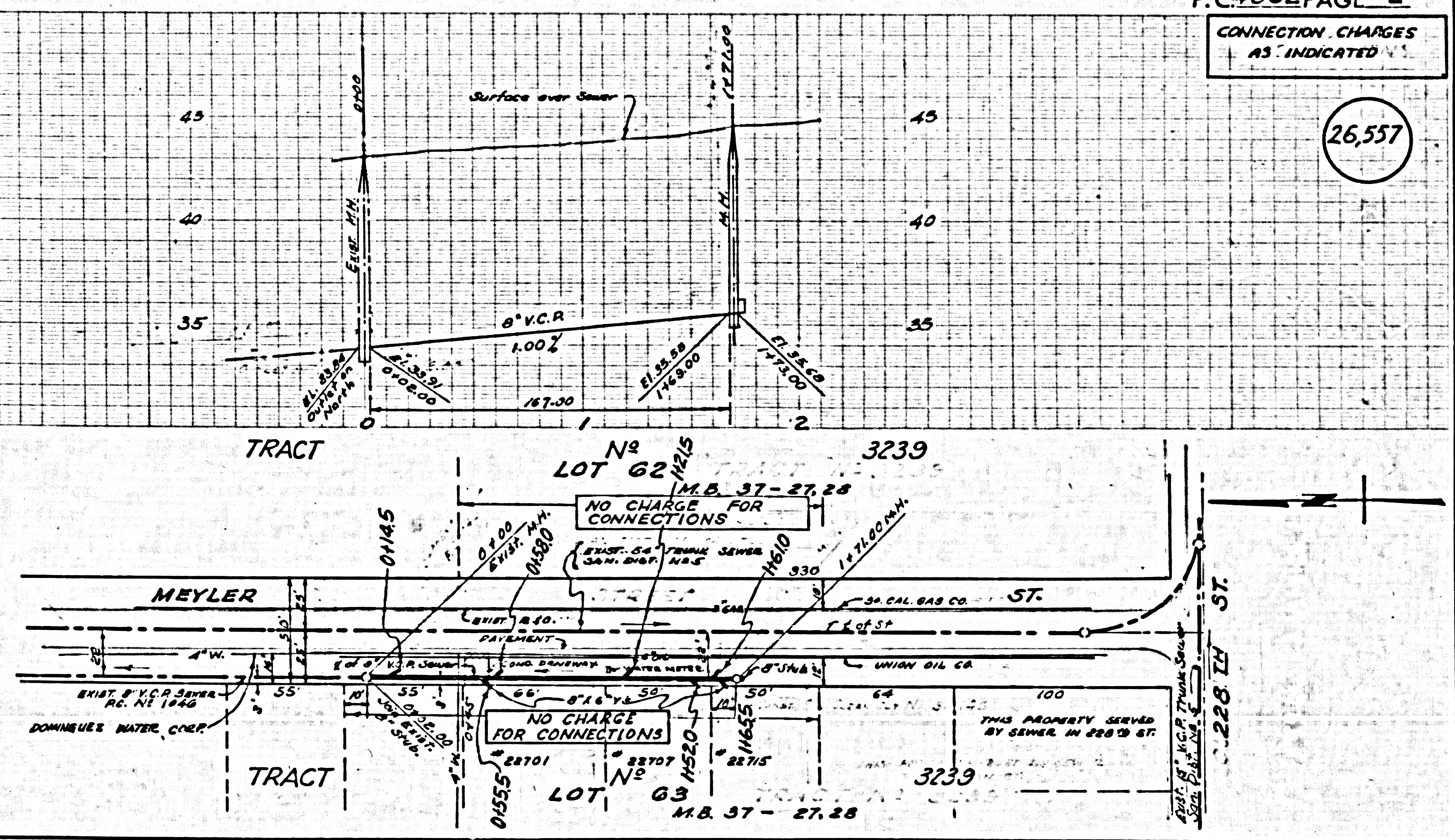
COUNTY OF LOS ANGELES, CALIFORNIA

APPROVED, JOHN A. LAMME, COUNTY ENGINEER  
APPROVED, A. M. RAWN, CHIEF ENGINEER  
BY B. H. Hughes SANITATION ENGINEER  
BY J. W. Woodhouse OFFICE ENGINEER  
CHECKED BY St. White 7-16-58  
OFFICE OF COUNTY ENGINEER, SING. C. E. NO. 3486

P.C. 4862 PAGE 2

CONNECTION CHARGES AS INDICATED

26,557



8-13-58