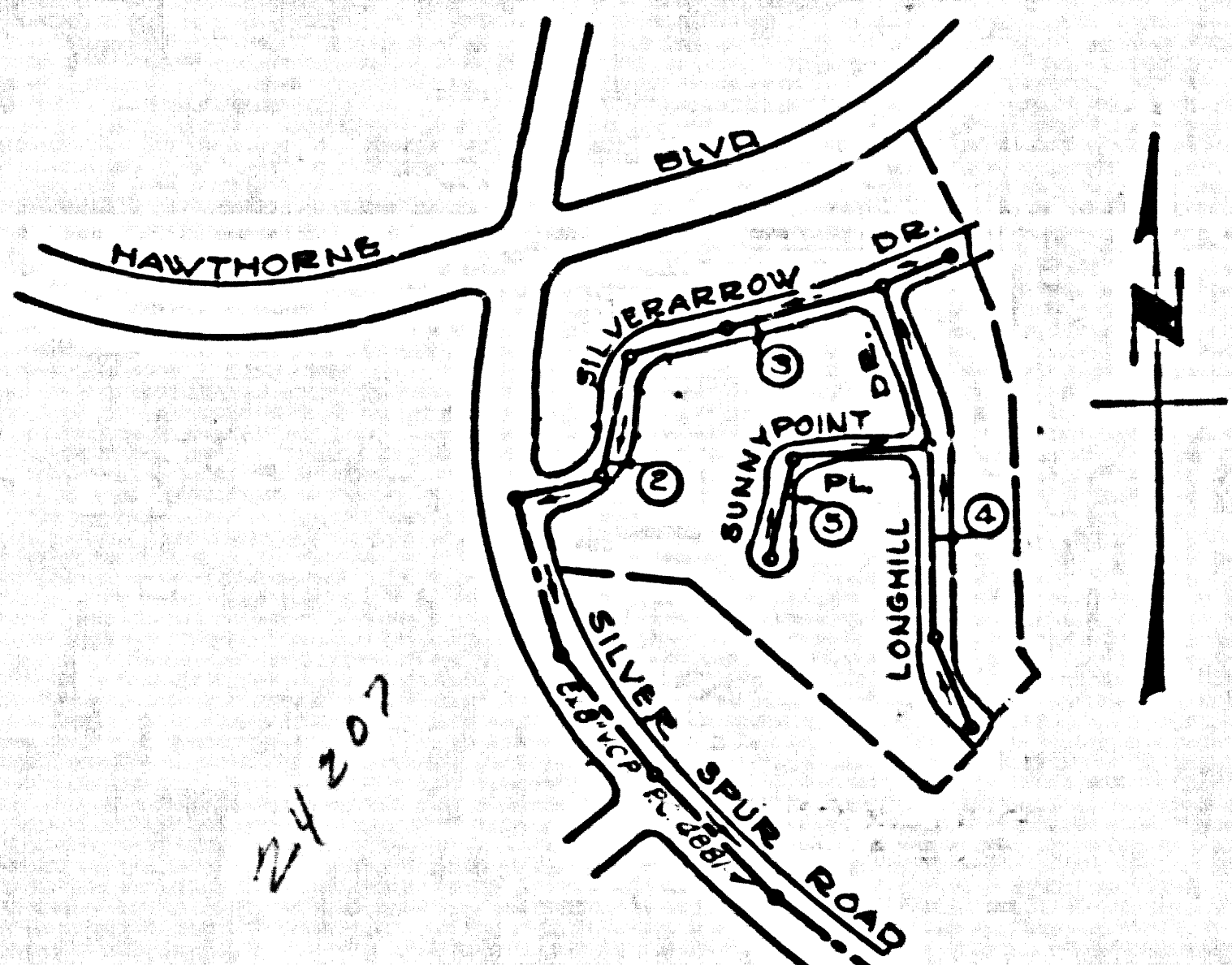


B.M. County Surveyor - U.S.G.S. Sta. disc stamped  
 Q786-1946 set flush with ground 45.2' N. of &  
 Palos Verdes Drive North 47.4' E. of &  
 Norbonne Ave. Elev. 355.510

NOTE: County Surveyor B.M. 36-2 Precise  
 Survey 1933 Adj. 355.533 - Add 0.063 to  
 all elevations shown hereon to agree  
 with 1953 Adjustment



INDEX MAP  
 TRACT No 24443  
 P.C. 4870  
 Scale 1" = 400'

NO CHARGE FOR  
 CONNECTIONS

See Order 10-6-58

LOMITA BLDG. DIST. NO. 71

NOTES:

- PROVIDE GRADES ON THE PROPERTY LINE OR PROPERTY LINES PRODUCED BY SPINE ANGLES TO THE CENTER LINE AS THE CENTER LINE OF EACH MANHOLE.
- NO REPRESENTATIVE OF THE COUNTY ENGINEER WILL SURVEY OR LOCATE ANY PORTION OF THE WORK.
- THE OWNER OR HIS AUTHORIZED REPRESENTATIVE SHALL FURNISH THE COUNTY ENGINEER WITH GRADE SHEETS AND STATION FOR ALL HOUSE LATERALS AND Y BRANCHES AND SHALL PROVIDE STAKES FOR THEM AT THEIR PROPER LOCATIONS WITH STATIONING PLAINLY MARKED AND CHANGED IN LOCATION SHALL BE INDICATED BY WRITING BY THE OWNER OR HIS REPRESENTATIVE. NO REVISIONS SHALL BE MADE IN THESE PLANS WITHOUT THE APPROVAL OF THE COUNTY ENGINEER.
- USE STANDARD MANHOLE FRAMES AND COVERS, 6-6-117, EXCEPT AS NOTED.
- USE STANDARD STIMONS FOR EXCEPT AS NOTED.
- USE CHAMBER MORTAR, OR "TRONG LOCK" OR "SPICED" SCAL FOR ALL V.C.P. JOINTS FOR SPECS. SECS 36 & 48.
- REINFORCE ALL BRICK WITH PAYAS TO MEET L.A. COUNTY ROAD DEPT. OR CALIF. STATE HIGHWAY DEPT. REQUIREMENTS IN ACCORDANCE WITH PERMITS.
- INDICATE FOUR FEET OF SEWER AT POINTS OF INTERFERENCE WITH POLES, CASE III, 3-1-17E.
- HOUSE LATERALS TO BE CONSTRUCTED WITH VISIBLY AT PROPERTY LINE. 8" BELOW CURB GRADE EXCEPT AS NOTED.
- ALL STRUCTURES SHALL BE BRICK SEWER STRUCTURES, 6-6-104, EXCEPT AS NOTED.
- FOR ALLOWABLE SEAKAGE TEST USE FORMULA NO. 1 SPECS., ETC. BE
- MANHOLE TOPS IN UNIMPROVED RIGHTS-OF-WAY TO BE 6" ABOVE FINISHED GRADE.
- THE PRIVATE ENGINEER IS TO FURNISH THE HOUSE LATERAL DEPTH AT THE PROPERTY LINE BELOW THE TOP OF CURVE ELEVATION FOR EACH HOUSE LATERAL ON THE GRADE SHEET.
- THE CONTRACTOR SHALL NOTIFY THE CONSTRUCTION AND SEWER DEPT BY TELEPHONE, HARBOR 9-8-0, EXT. 265, AT LEAST 24 HOURS BEFORE STARTING ANY WORK UNDER THIS CONTRACT.
- GRIND CONSTRUCTION WILL BE PERMITTED IN FILLED AREAS UNLESS ACCEPTABLE CERTIFICATION IS SUBMITTED TO THE CONSTRUCTION DIVISION OF THE COUNTY ENGINEER'S DEPARTMENT THAT EXISTING CONSTRUCTION IS GREATER THAN 100%.
- IF CONSTRUCTION IS LESS THAN 80%, THE SEWER MUST BE CRADLED AS SHOWN ON THE PLANS PER 3-8-56.
- IF CONSTRUCTION IS GREATER THAN 80%, CRADLING & SPECIAL M.H. RAISES ARE NOT REQ'D; HOWEVER, JOINTS IN FILLED AREAS

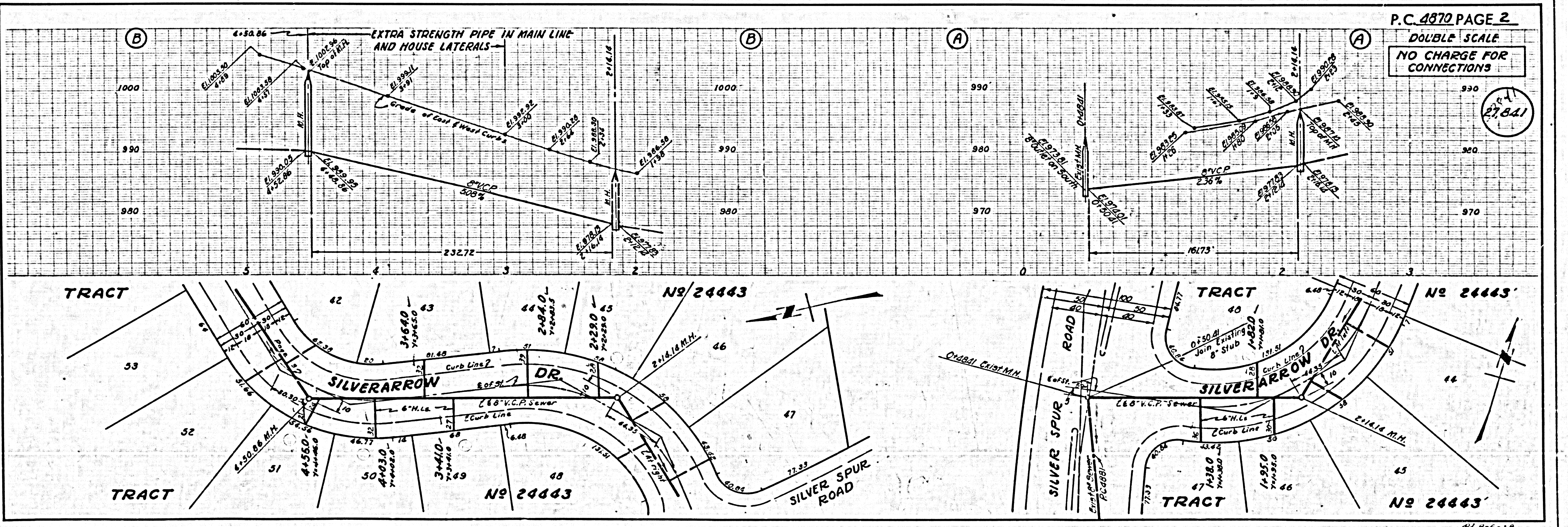
ENGINEERING SERVICE CORPORATION					
1127 W. WASHINGTON BLVD.					
LOS ANGELES 15, CALIF. RI. 9-7281					
REVISIONS			TRACED BY <u>e.d.</u>		
			DES'GD BY <u>e.d.</u>		
			CK'D BY <u>CMR</u>		
			SUBMITTED		
SUB STRUCTURES OK'D					
W. O. NO.	DWG. NO.	DATE	SCALE	L. B.	P. B.
6681-89		May 1958	As Noted		

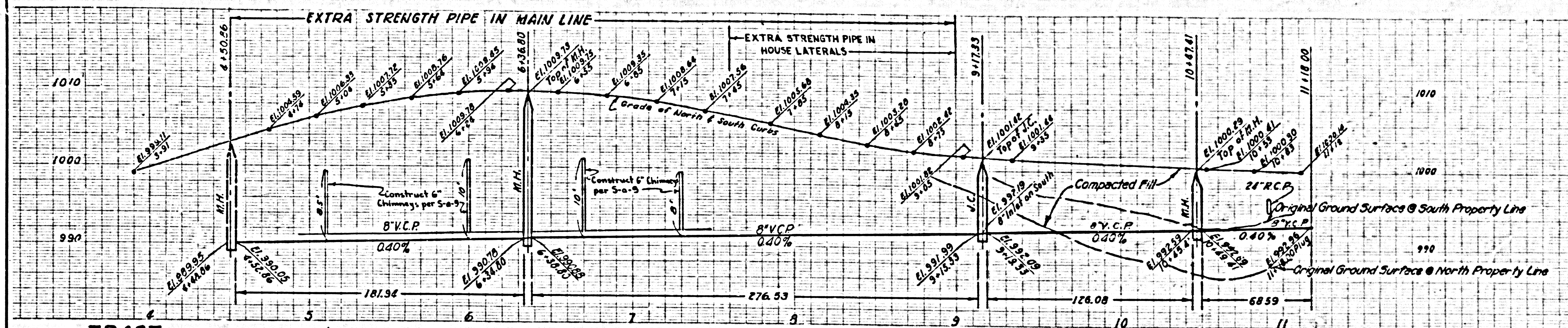
PROFILE ALIGNMENT AND GRADE OF P.C. 4870  
 SANITARY SEWERS PAGE 1  
 TO BE CONSTRUCTED IN  
 TRACT No 24443 27,840

PRIVATE CONTRACT NO. 4870  
 W.S. 27  
 3 SHEETS; 3 PAGES  
 SCALE: HORIZ. 1" = 40' VERT. 1" = 4'  
 MAY, 1958  
 PREPARED IN THE OFFICES OF  
 ENGINEERING SERVICE CORPORATION  
 BY E. J. Owens  
 REG. C. E. NO. 3492  
 FOR LEGEND SEE PLAN NO. S-A-64

NOTE:  
 GRADES TO WHICH THIS IMPROVEMENT IS TO BE CONSTRUCTED ARE SHOWN ON PLANS AND PROFILES. GRADE POINTS FOR TOP OF CURBS, CENTER LINE OF STREETS, OR CENTER LINE OF ALLEYS ARE SHOWN BY CIRCLES ON PROFILES. AT ALL POINTS BETWEEN REGULARLY POINTS THE GRADE SHALL BE ESTABLISHED SO AS TO CONFORM TO A STRAIGHT LINE DRAWN BETWEEN SAID REGULAR POINTS.  
 ELEVATIONS ARE IN FEET ABOVE U.S.C. & G.S. MEAN SEA LEVEL DATUM OF 1929.  
 THE SHALING AND THE DATA HEREON ARE HEREBY MADE A PART OF THE SPECIFICATIONS.  
 WORK SHALL BE CONSTRUCTED ACCORDING TO SPECIFICATIONS ON FILE IN THE OFFICE OF THE COUNTY ENGINEER AND SHALL BE PROSECUTED ONLY IN THE PRESENCE OF THE COUNTY ENGINEER.  
 BEFORE WORK CAN BE STARTED, THE CONTRACTOR MUST OBTAIN A PERMIT TO EXCAVATE IN COUNTY OFFICE FROM THE L.A. COUNTY ROAD DEPT., DIST. 7, 1ST AND 2ND FLOOR, 3000 224th AVENUE, BLDG. 224, 224 BROADWAY, BUREAU TO COVER THE COST OF CONSTRUCTION INSPECTION AND RECORD PLANS.  
 APPROVAL OF THIS PLAN BY THE COUNTY OF LOS ANGELES DOES NOT CONSTITUTE A REPRESENTATION AS TO THE ACCURACY OF THE LOCATION OF OR THE EXISTENCE OR NON-EXISTENCE OF ANY UNDERGROUND UTILITY PIPE, OR STRUCTURE WITHIN THE LIMITS OF THIS PROJECT THIS NOTE APPLIES TO ALL PAGES.  
 IF WORK IS TO BE DONE ON A STATE HIGHWAY, A PERMIT MUST BE OBTAINED FROM THE STATE OF CALIFORNIA, DIVISION OF HIGHWAYS, 128 SOUTH SPRING STREET.

COUNTY OF LOS ANGELES, CALIFORNIA  
 APPROVED, JOHN A. LAMME, COUNTY ENGINEER  
 APPROVED, A. M. RAWN, CHIEF ENGINEER  
 BY E. J. Owens SANITATION ENGINEER  
 CHECKED BY W. J. White 10-6-58  
 OFFICE OF COUNTY ENGINEER, REG. C. E. NO. 9486

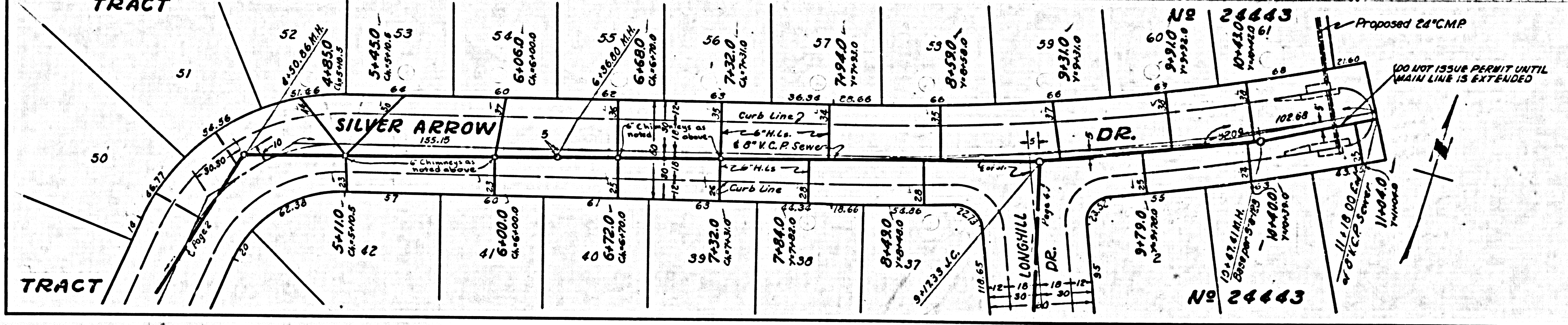




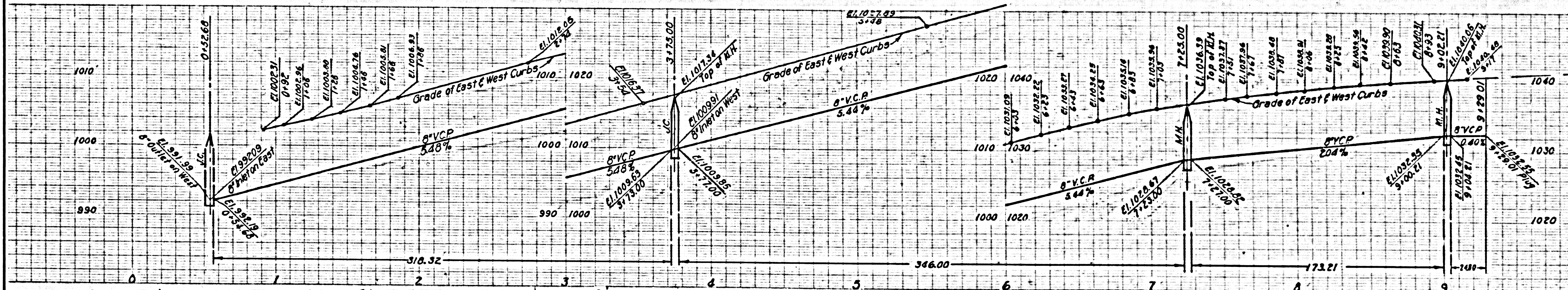
PC 4870 PAGE 3  
 DOUBLE SCALE  
 NO CHARGE FOR CONNECTIONS

27,842

REVISION  
 68.95 feet of 8" V.C.P. added from Sta. 10+49.41 to Sta. 11+18.00.  
 H.L. added at Sta. 11+105.  
 12-16-58  
 [Signature] Approved



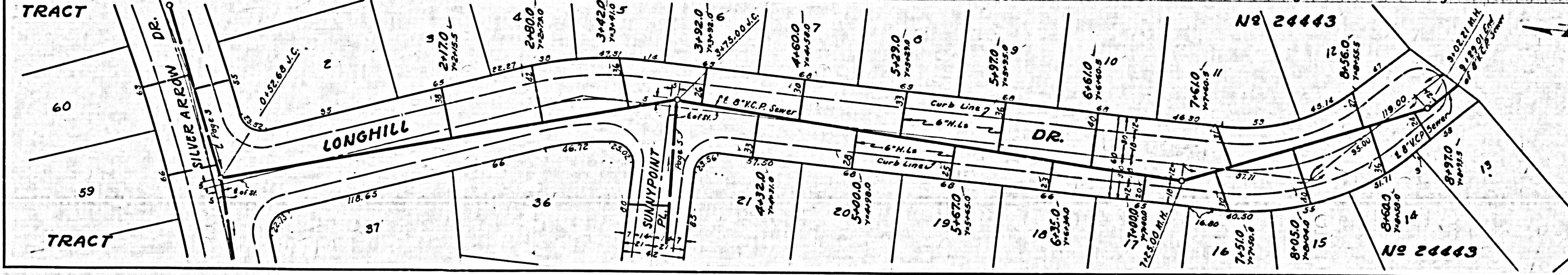
86 8-C-58



PC 4870 PAGE 4  
 DOUBLE SCALE  
 NO CHARGE FOR CONNECTIONS

27,843

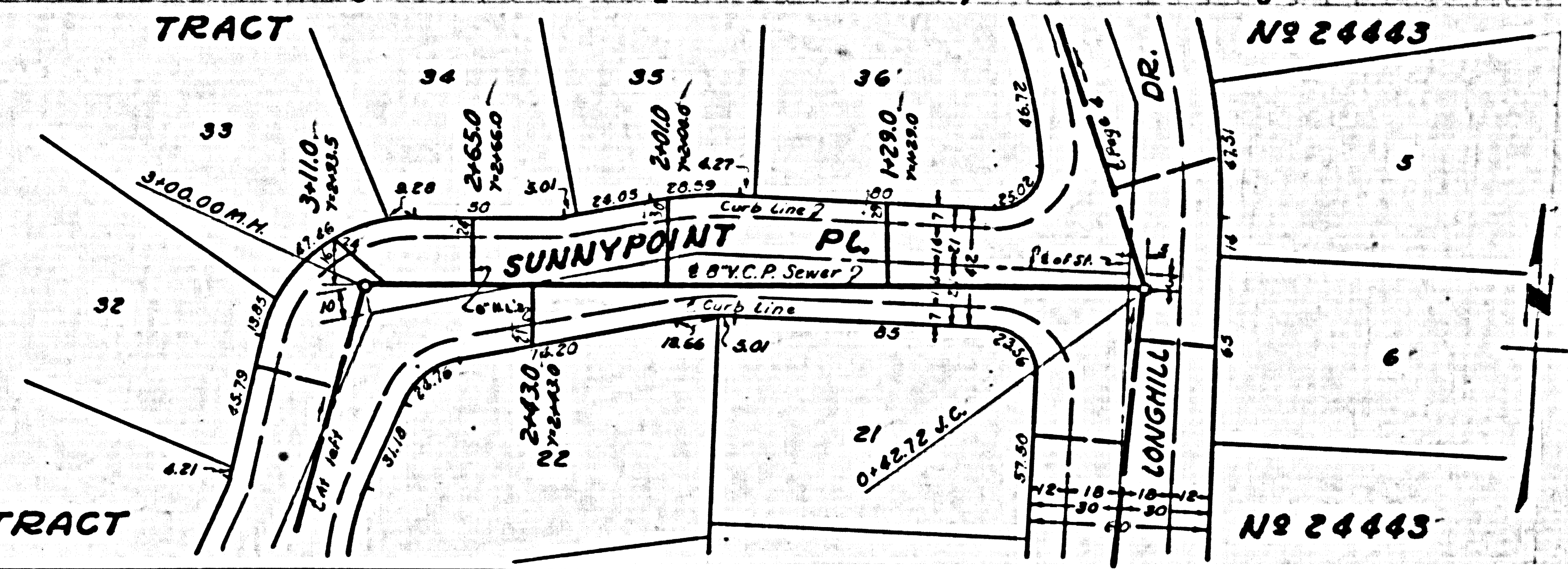
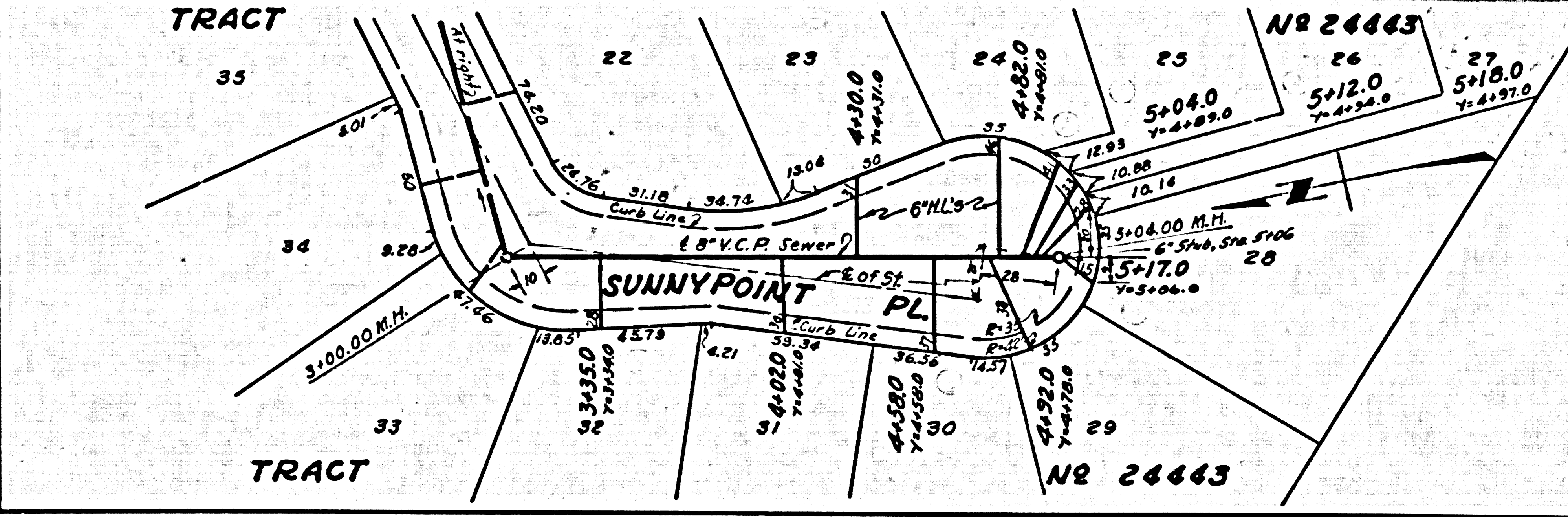
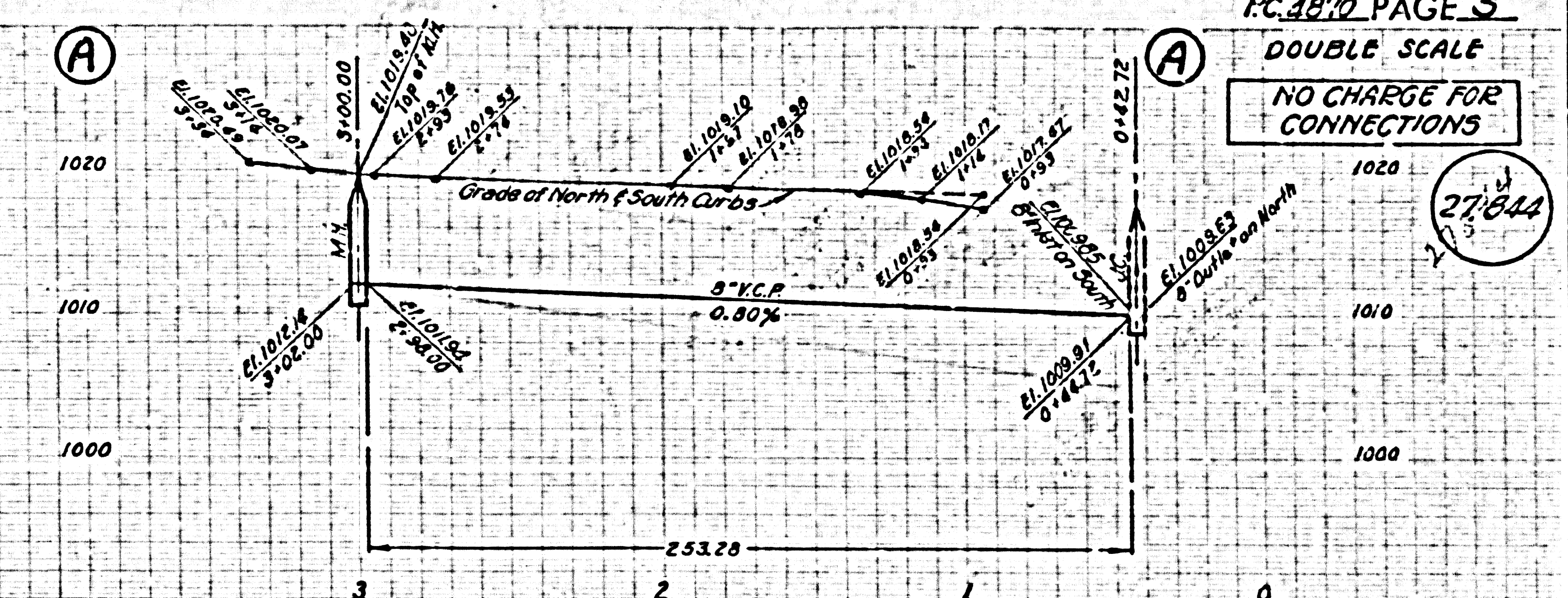
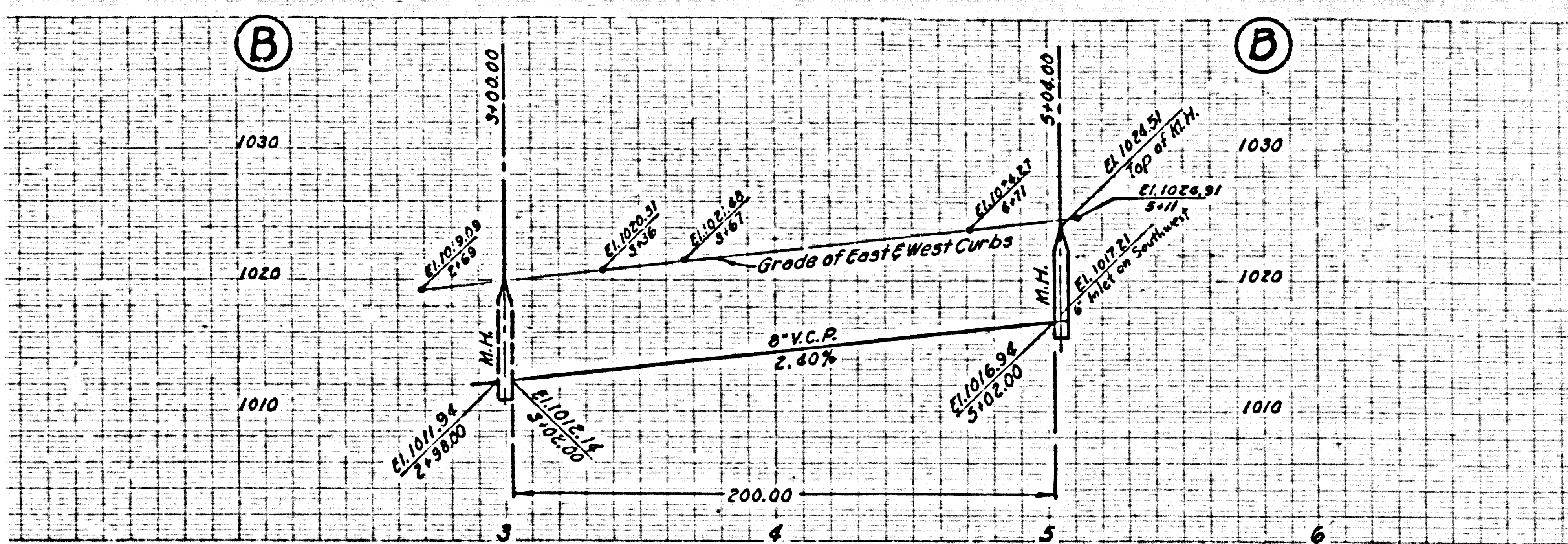
REVISION  
 24.80 feet of 8" V.C.P. added from Sta. 9+104.21 to Sta. 9+129.01.  
 12-16-58  
 [Signature] Approved



86 8-C-58

PC. 1870 PAGE 5  
DOUBLE SCALE  
NO CHARGE FOR CONNECTIONS

27844



8-6-58

PAGE