

PUEENTE BLDG. DIST. NO. 2

PROFILE ALIGNMENT AND GRADE OF P.C. 4874  
 SANITARY SEWERS PAGE 1  
 TO BE CONSTRUCTED IN

**TRACT NO. 24521**

PRIVATE CONTRACT NO. 4874

W.S. 38  
 4 SHEETS, 7 PAGES

SCALE: VERT. 1"=4' AUGUST, 1958  
 HORIZ. 1"=40'

PREPARED IN THE OFFICES OF  
 NATIONAL ENGINEERING CO. (7)

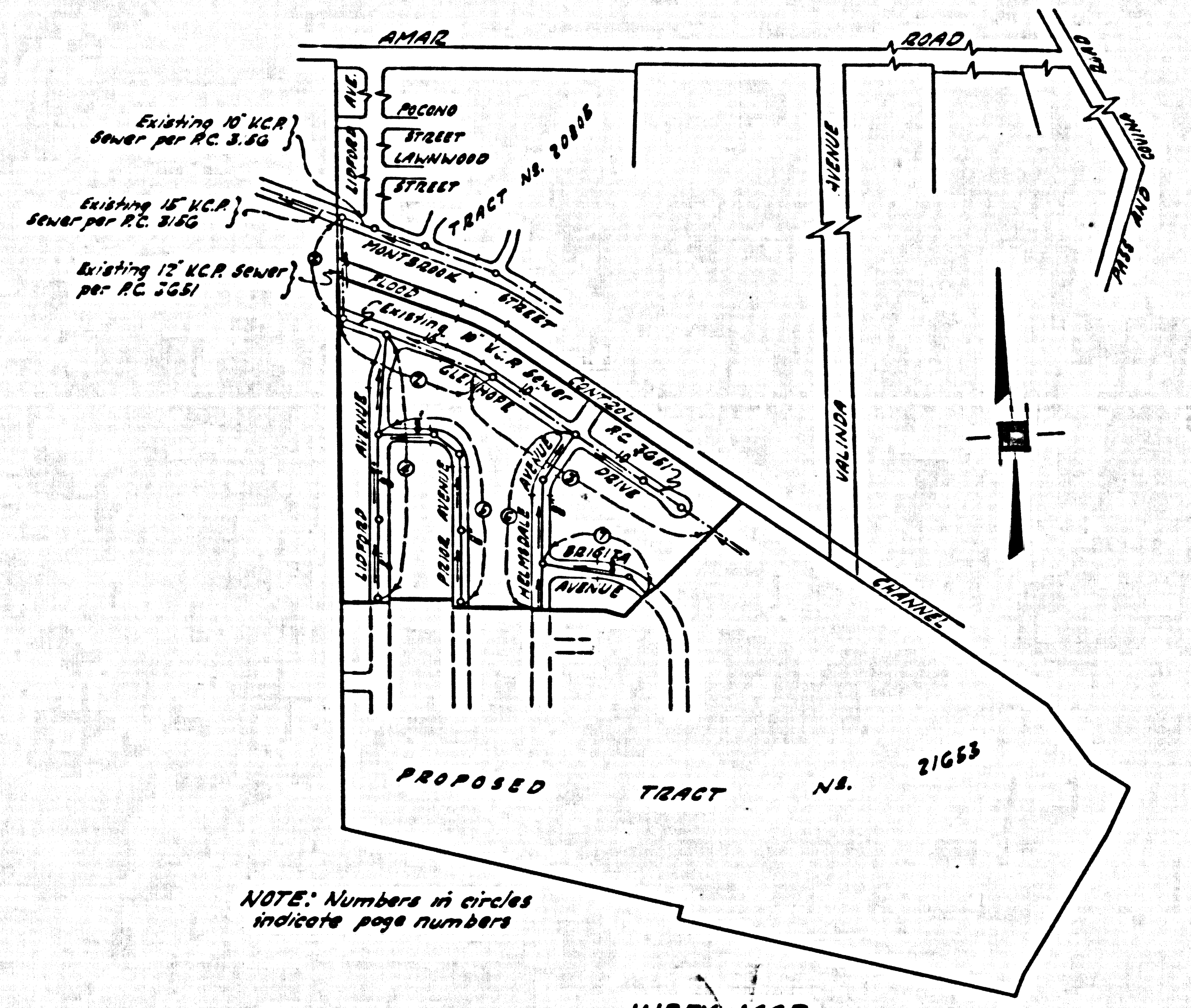
BY: *E. G. ...*  
 CHECKED BY: *...*

FOR LEGEND SEE PLAN NO. S-A-64

- NOTES:
1. PROVIDE STAKES ON THE PROPERTY LINE OR PROPERTY LINES IF ADJACENT AT RIGHT ANGLES TO THE SEWER LINE AT THE CENTER LINE OF EACH MANHOLE.
  2. NO REPRESENTATIVE OF THE COUNTY ENGINEER WILL SURVEY OR LAY OUT ANY PORTION OF THE WORK.
  3. THE OWNER OR HIS AUTHORIZED REPRESENTATIVE SHALL FURNISH THE COUNTY ENGINEER WITH GRADE SHEETS AND STATIONING FOR ALL HOUSE LATERALS AND Y BRANCHES AND SHALL PROVIDE STAKES FOR THEM AT THEIR PROPER LOCATIONS WITH STATIONING PLAINLY MARKED. ANY CHANGE IN LOCATION SHALL BE REQUESTED IN WRITING BY THE OWNER OR HIS REPRESENTATIVE.
  4. THE PRIVATE ENGINEER SHALL FURNISH THE HOUSE LATERAL BATHS AT THE PROPERTY LINE BELOW THE TOP OF CURB ELEVATION FOR EACH HOUSE LATERAL ON THE GRADE SHEET.
  5. NO REVISIONS SHALL BE MADE IN THESE PLANS WITHOUT THE APPROVAL OF THE COUNTY ENGINEER.
  6. USE STANDARD MANHOLE FRAMES AND COVERS, S-117.
  7. USE STANDARD STRENGTH PIPE.
  8. USE STANDARD METHOD OF "WEDGE-LOCK" OR "SPREAD-BEAT" FOR ALL V.C.P. JOINTS PER SPEC., SECT. 24 & 4.
  9. RESURFACE ALL TRENCH WITHIN PAVED ASPH TO MEET L.A. COUNTY ROAD DEPT., IN CALIF. STATE HIGHWAY REQUIREMENTS IN ACCORDANCE WITH PERMITS.
  10. INCASE POLE # OF SEWER AT POINTS OF INTERFERENCE WITH POLE, CASE NO. S-172.
  11. HOUSE LATERALS TO BE CONSTRUCTED WITH INVERTS AT PROPERTY LINE  $\frac{1}{2}$  FEET BELOW CURB GRADE EXCEPT AS NOTED.
  12. ALL STRUCTURES SHALL BE BRICK SEWER STRUCTURES, S-194.
  13. FOR ALLOWABLE LEAKAGE TEST USE FORMULA NO. 1 SPEC., SEC. 24.
  14. MANHOLE TUBE IN UNIMPROVED RIGHTS-OF-WAY TO BE SIX INCHES ABOVE FINISHED GRADE.
  15. THE CONTRACTOR SHALL NOTIFY THE CONSTRUCTION & STORM DRAIN DIVISION BY TELEPHONE, MADISON 9-47, EXT. 34, AT LEAST TWENTY-FOUR HOURS BEFORE STARTING ANY WORK UNDER THIS CONTRACT.

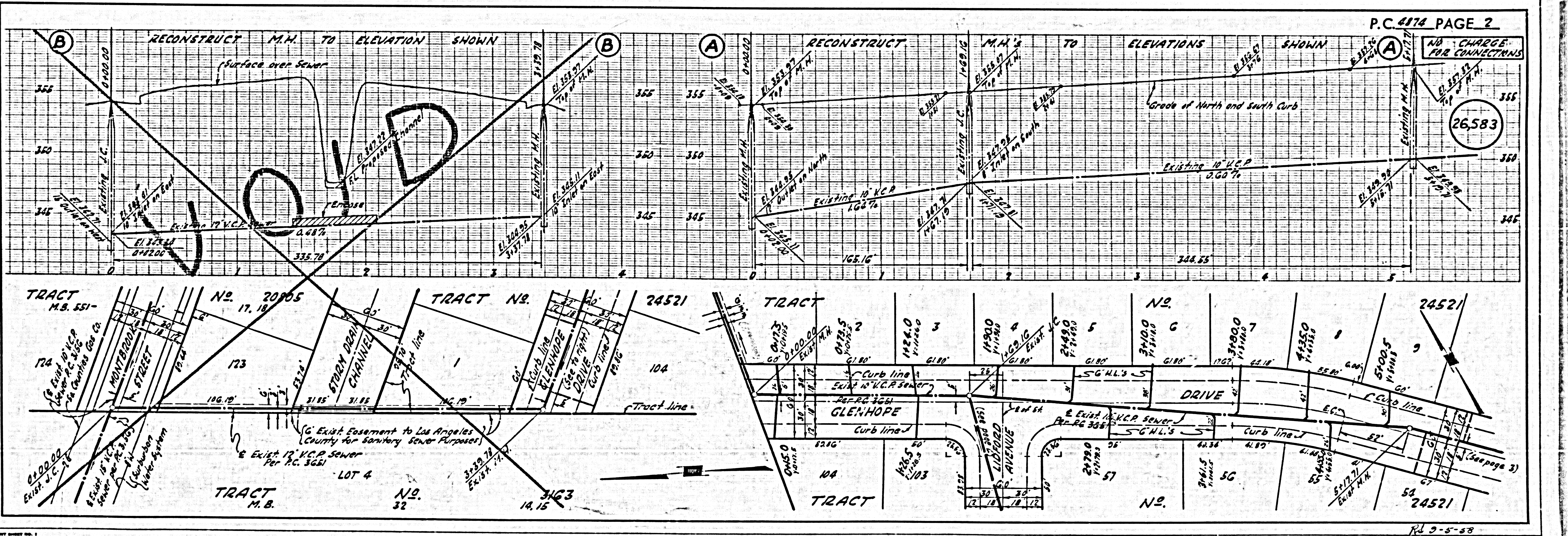
BENCH MARK S.G. 1630  
 Los Angeles Rd. Dept. B.M. 109 3' W. of  
 B.C.R. @ S.E. corner of Amer Rd. & Velando  
 Avenue 7' 3" S. E of 75' W. of E intersection.  
 ELEV. 372.520

NO CHARGE FOR CONNECTIONS  
 (Location) 7-25-58



NOTE: Numbers in circles indicate page numbers

INDEX MAP  
 TRACT NO. 24521  
 P.C. 4874  
 SCALE 1"=400'

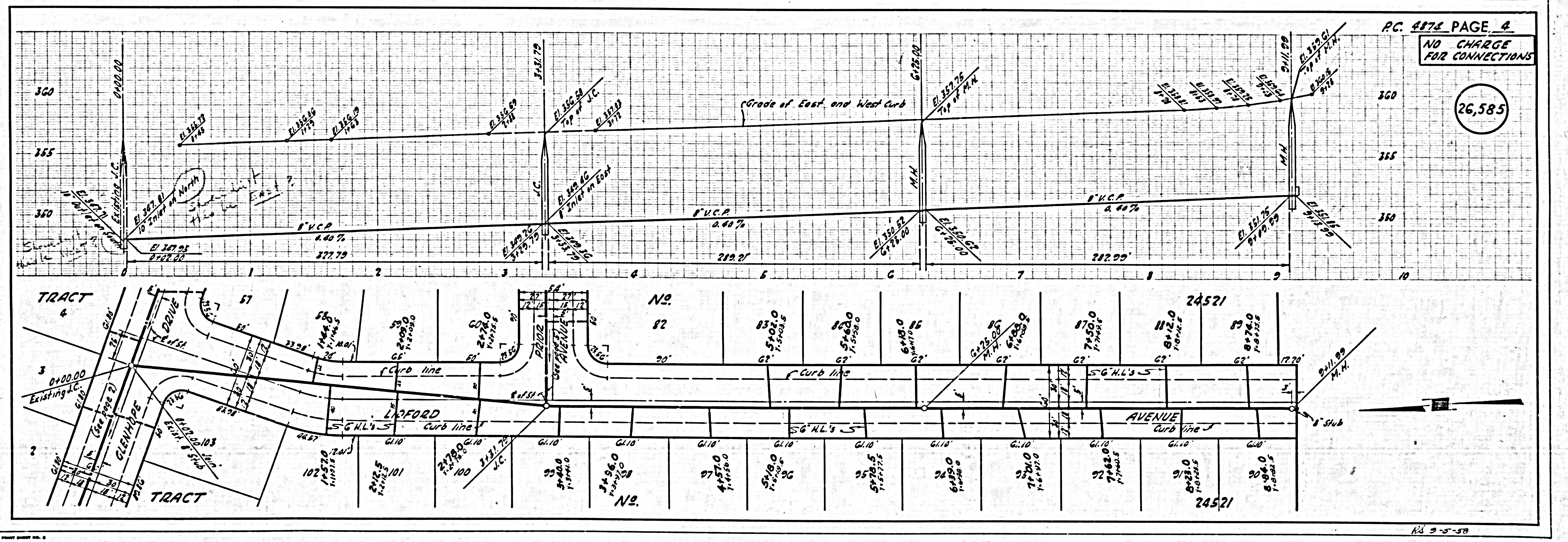
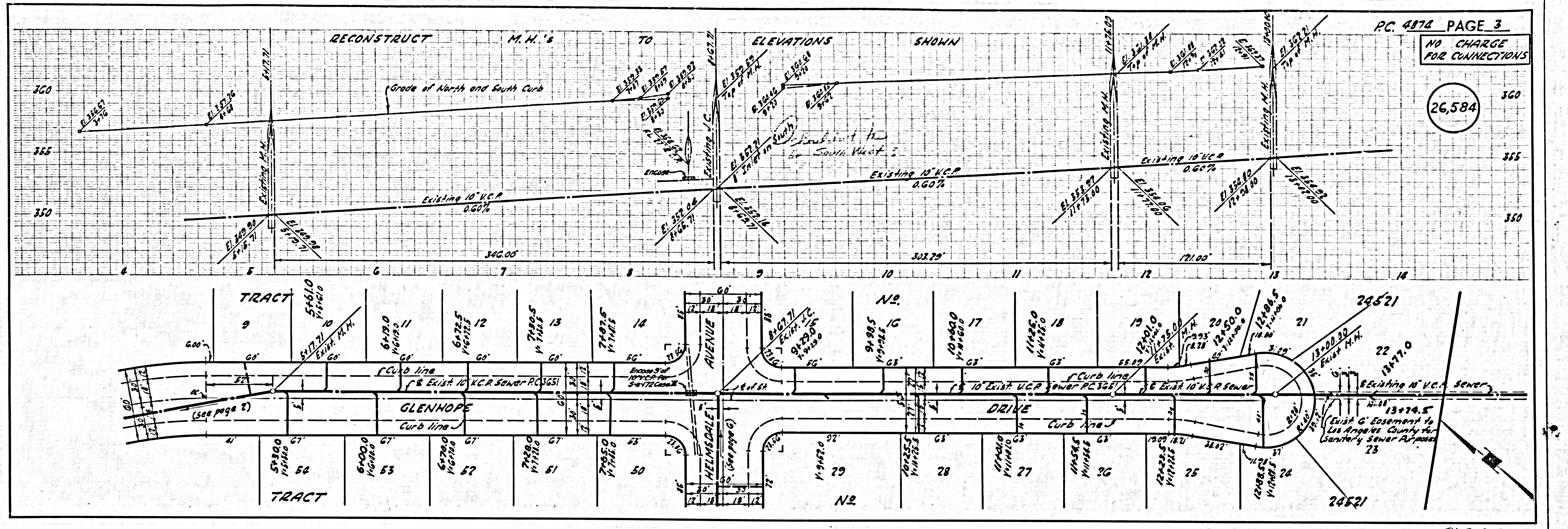


P.C. 4874 PAGE 2

NO CHARGE FOR CONNECTIONS

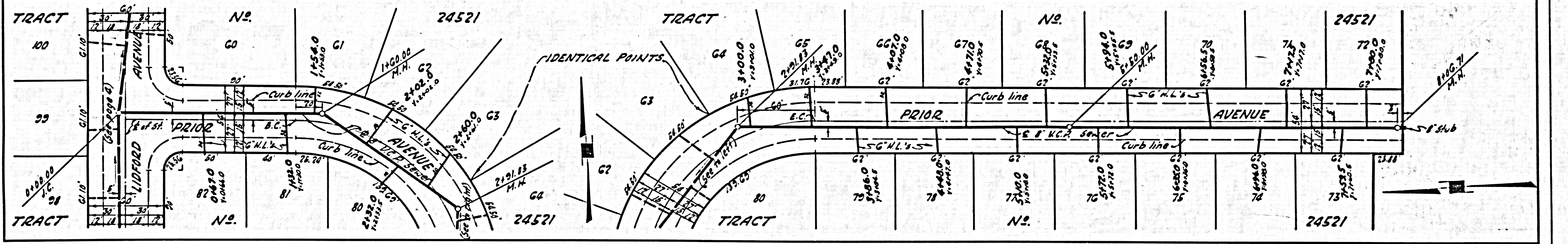
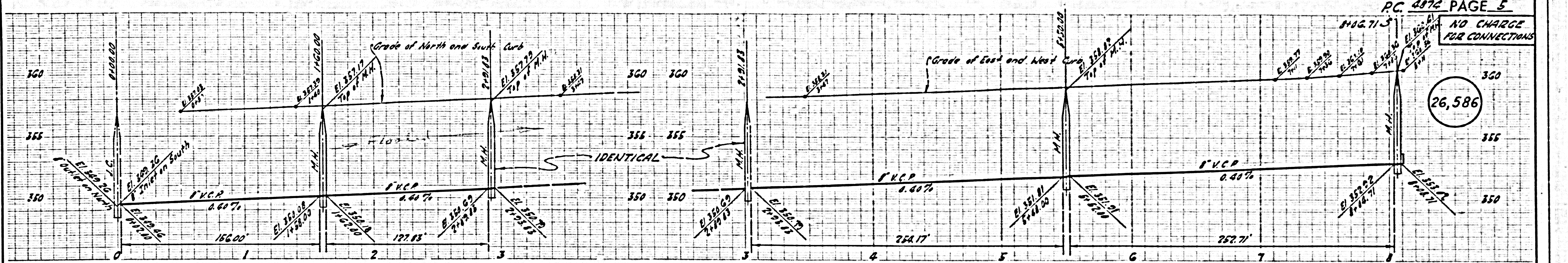
26,583

7-25-58



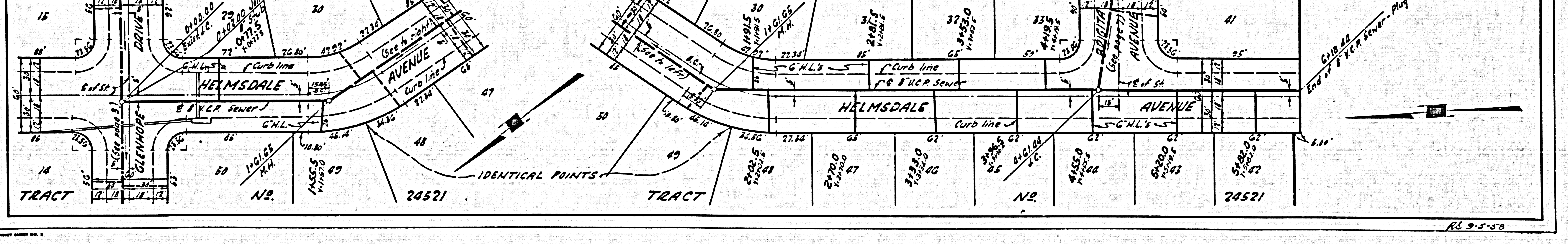
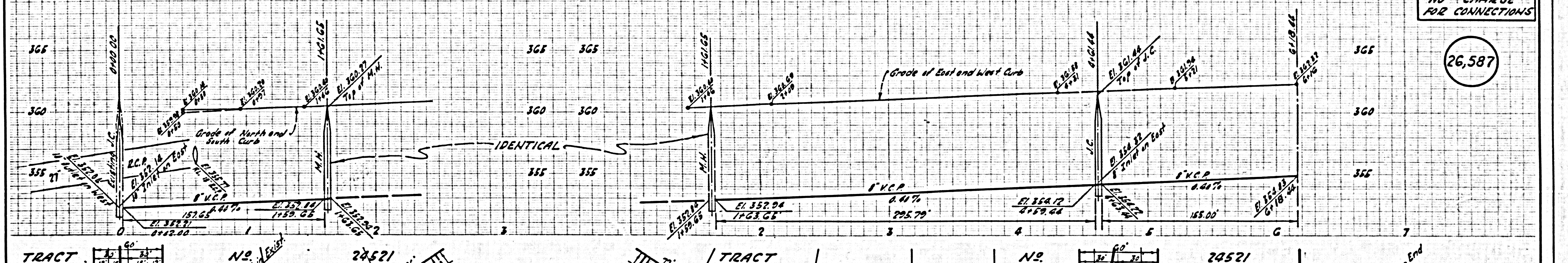
NO CHARGE FOR CONNECTIONS

26,586



NO CHARGE FOR CONNECTIONS

26,587



NO CHARGE FOR CONNECTIONS

26,588

