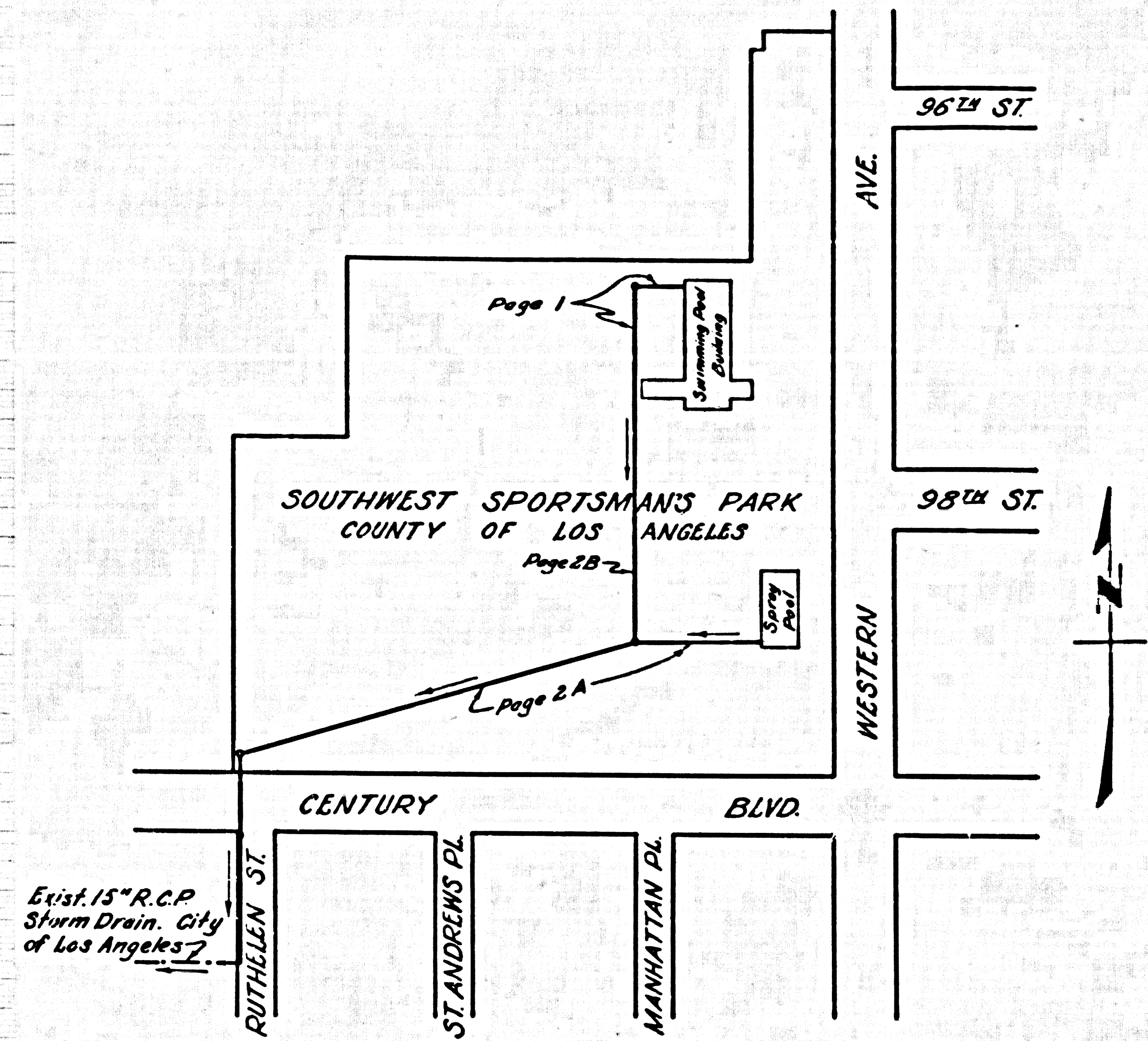
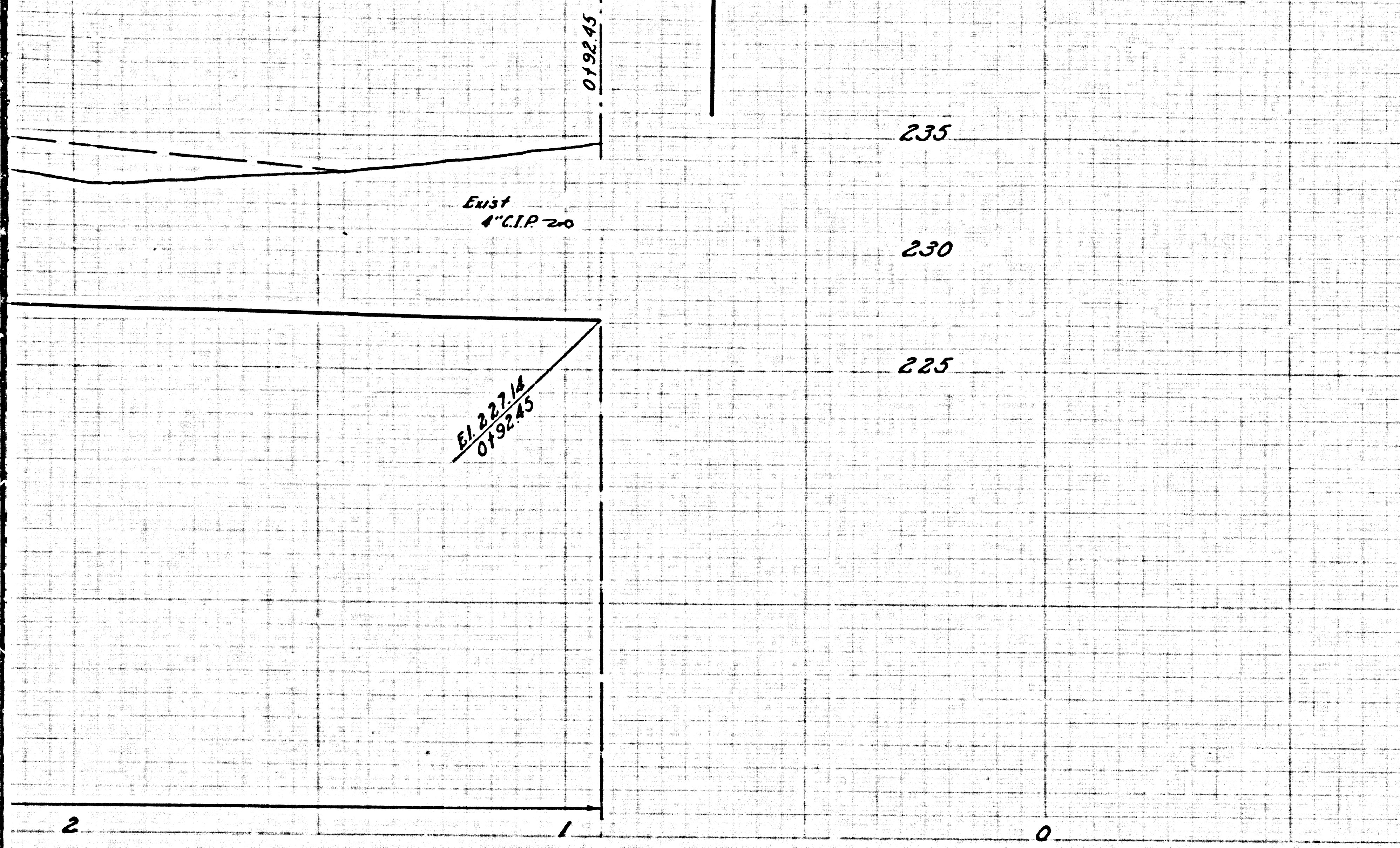
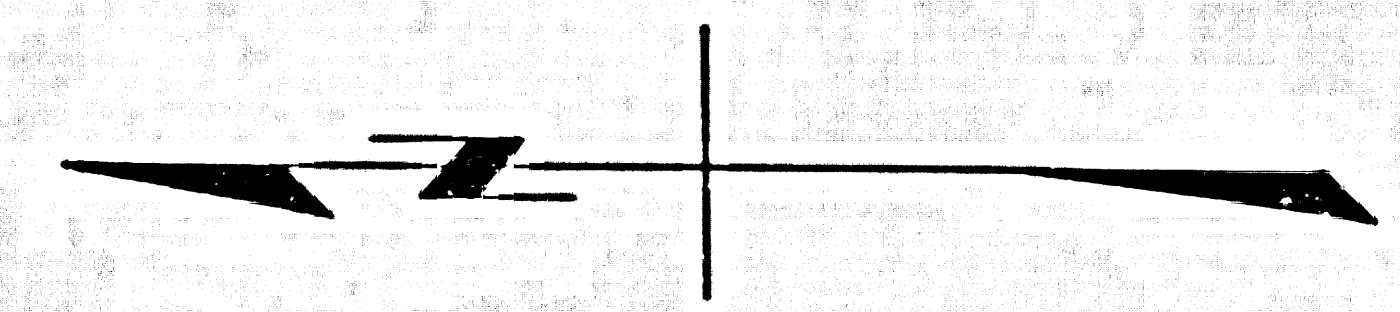
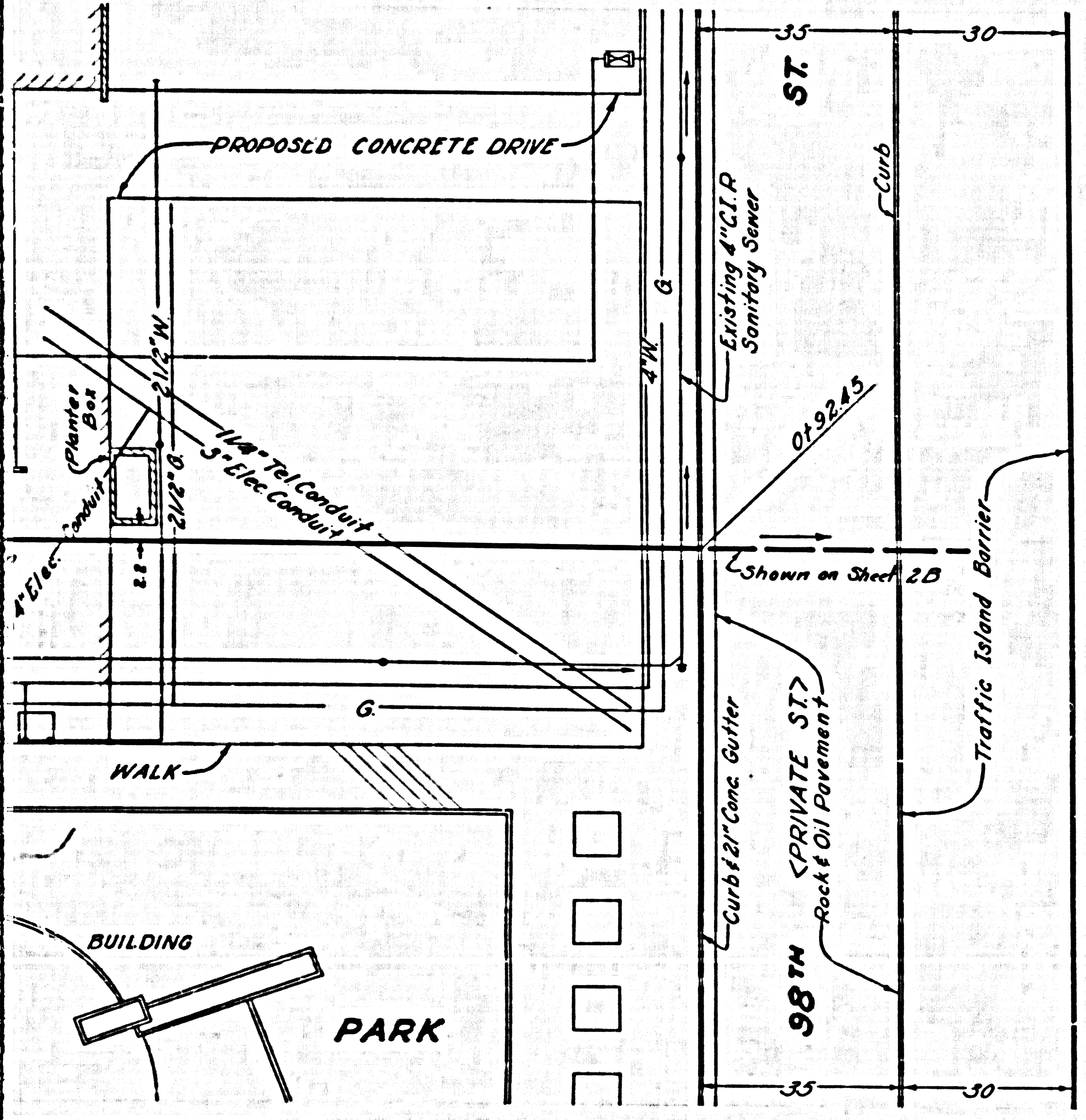


27818  
1



27818

INDEX MAP  
CAPITAL PROJECT NO. 8814.10  
P.C. 4879-B  
SCALE: 1"=200'



NOTE:  
THE CONTRACTOR SHALL NOTIFY THE CONSTRUCTION AND STORM DRAIN DIVISION BY TELEPHONE, MADISON 9 4747, EXT. 352, AT LEAST 24 HOURS BEFORE STARTING ANY WORK UNDER THIS CONTRACT.

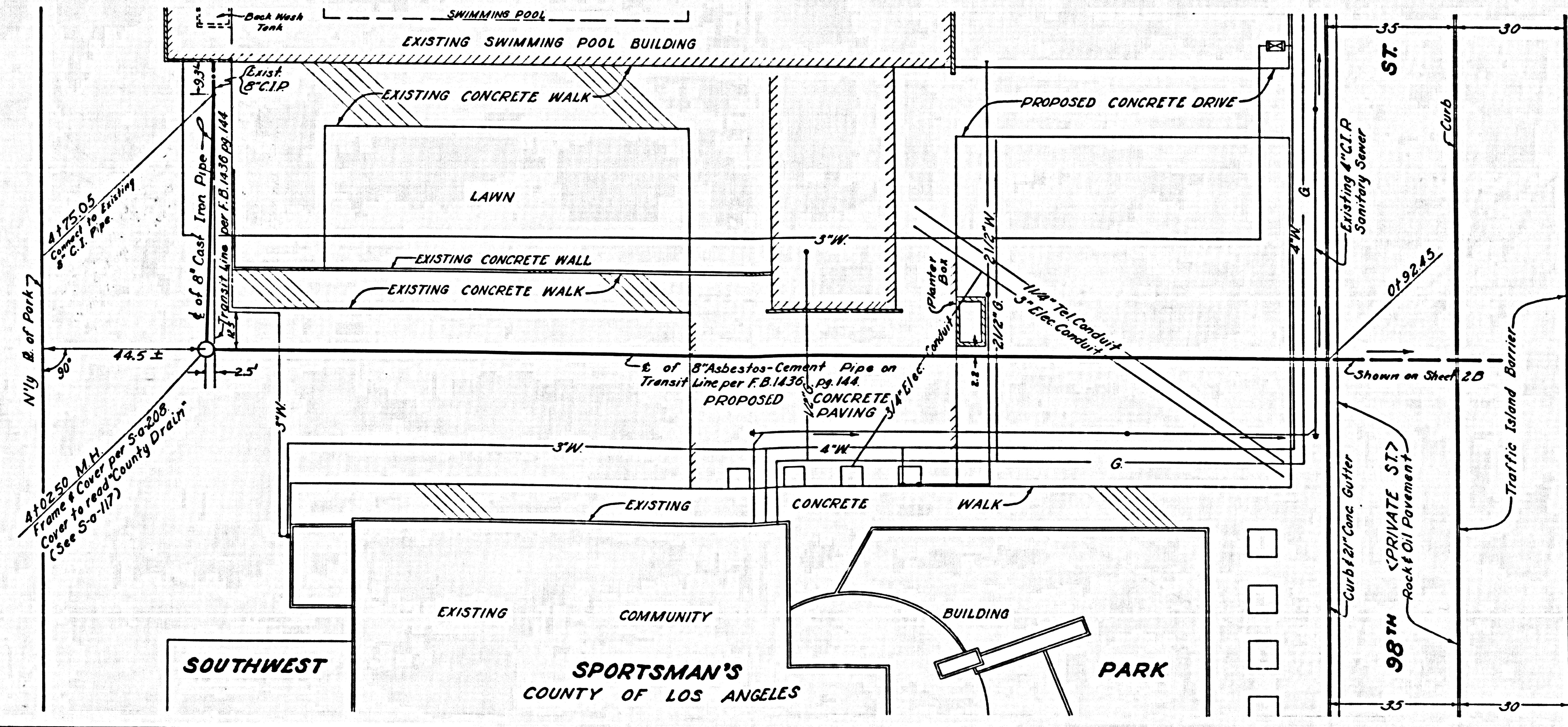
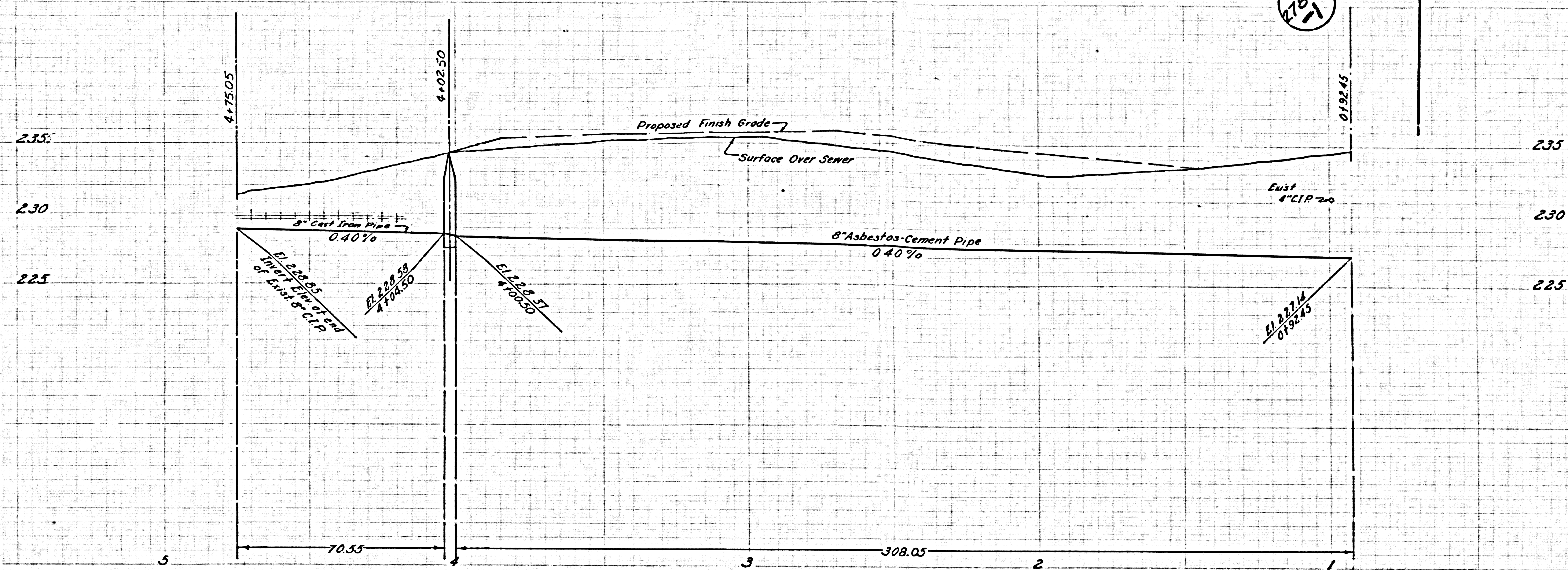
USE CLASS 1500 ASBESTOS-CEMENT SEWER PIPE EXCEPT AS NOTED.  
ALL JOINTS TO BE MADE WITH RING TITE COUPLINGS EXCEPT AS NOTED.  
MANHOLE TO BE A BRICK SEWER STRUCTURE AS PER PLAN NO S-9-104 WITH FRAME AND COVER PER S-9-117 EXCEPT AS NOTED.  
USE FORMULA NO 1 OF SEC. 54 OF SPECIFICATIONS COMPUTE ALLOWABLE LEORAGE.  
WHERE CAST IRON PIPE IS SPECIFIED USE 8" WATER, CAST IRON (BELL AND SPIGOT) N & WW-P-421.  
CONTRACTOR TO TAKE OUT EXCAVATION PERMIT AND STORM DRAIN CONNECTION PERMIT WITH THE CITY OF LOS ANGELES AT HIS OWN EXPENSE.  
ALL CONCRETE PAVING WHERE EXCAVATED SHALL BE SAWED WITH A CONCRETE SAW. THE TRENCH IN THE PAVED AREAS SHALL BE RESURFACED WITH PAVEMENT IN KIND WITH ONE ADDITIONAL INCH IN THICKNESS UNLESS REQUIRED OTHERWISE ON PERMIT FROM CITY.  
USE LEAD FOR ALL CAST IRON PIPE JOINTS EXCEPT AS NOTED.

**CAPITAL PROJECT NO. 8814.10**  
PROFILE, ALIGNMENT AND GRADE OF  
**SWIMMING POOL WATER DISPOSAL LINE**  
TO BE CONSTRUCTED IN  
**SOUTHWEST SPORTSMAN'S PARK**  
P.C. 4879 B

SHEET 1 OF 2 SHEETS  
SHEET 1 SCALE: 1"=40' SHEET 2 SCALE: 1"=40'  
MARCH 1959  
COUNTY OF LOS ANGELES, CALIFORNIA  
JOHN A. LAMBIE COUNTY ENGINEER  
SUBMITTED *H. L. Sullivan* ASSISTANT SANITATION ENGINEER  
APPROVED *L. A. Hughes* SANITATION ENGINEER

FOR LEGEND  
SEE PLAN NO S-A-84  
NOTE:  
GRADES TO WHICH THIS IMPROVEMENT IS TO BE CONSTRUCTED ARE SHOWN ON PLANS AND PROFILES. GRADE POINTS FOR TOP OF CURB, CENTER LINE OF STREET OR CENTER LINE OF ARE SHOWN BY CIRCLES ON PROFILES. AT ALL POINTS BETWEEN DESIGNATED POINTS THE GRADE SHALL BE ESTABLISHED SO AS TO CONFORM TO A STRAIGHT LINE DRAWN BETWEEN SAID DESIGNATED POINTS.  
ELEVATIONS ARE IN FEET ABOVE U.S.C. & G.S. SEA LEVEL DATUM AS OF 1929.  
THIS DRAWING AND THE DATA HEREON ARE HEREBY MADE A PART OF THE SPECIFICATIONS.

27818  
1

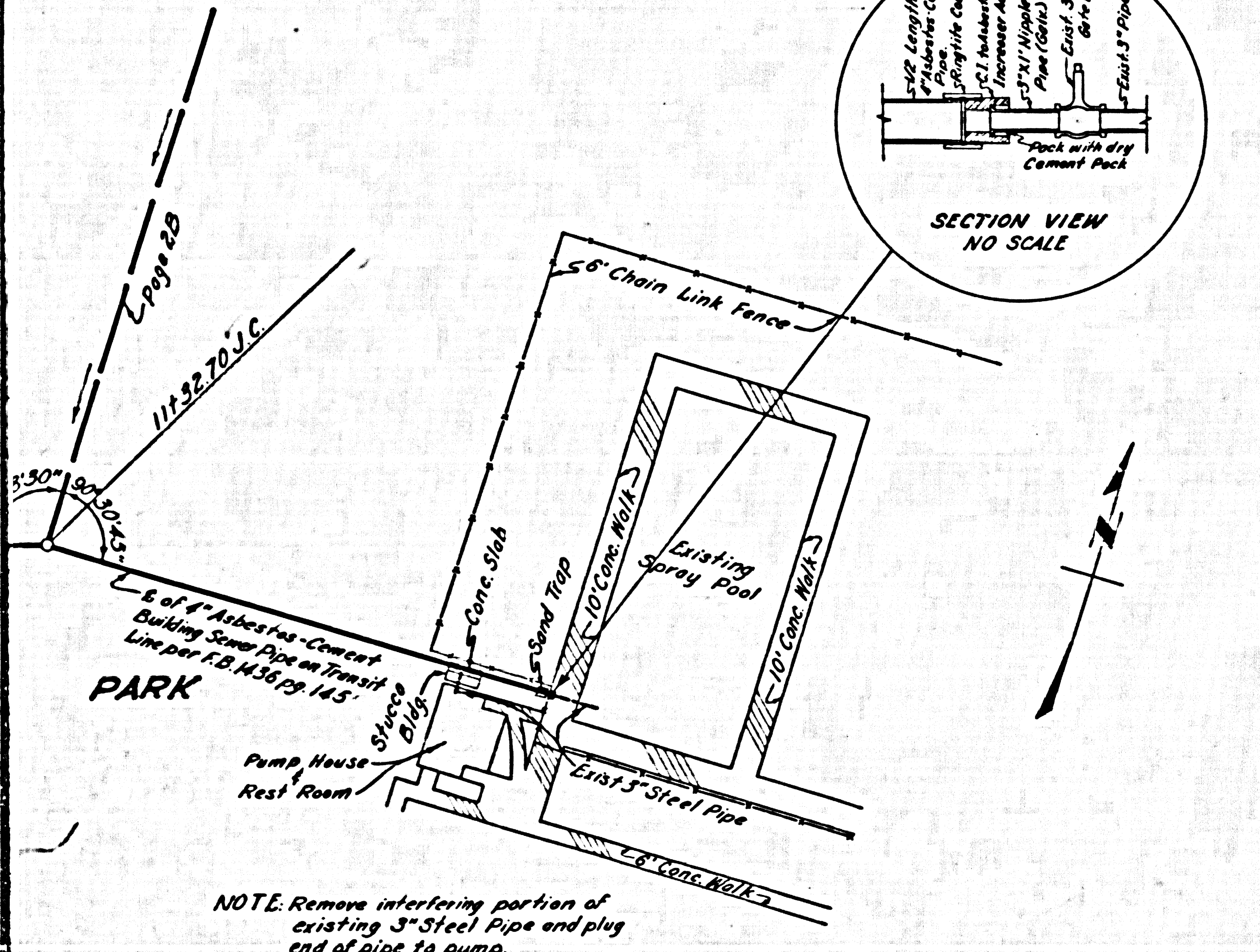
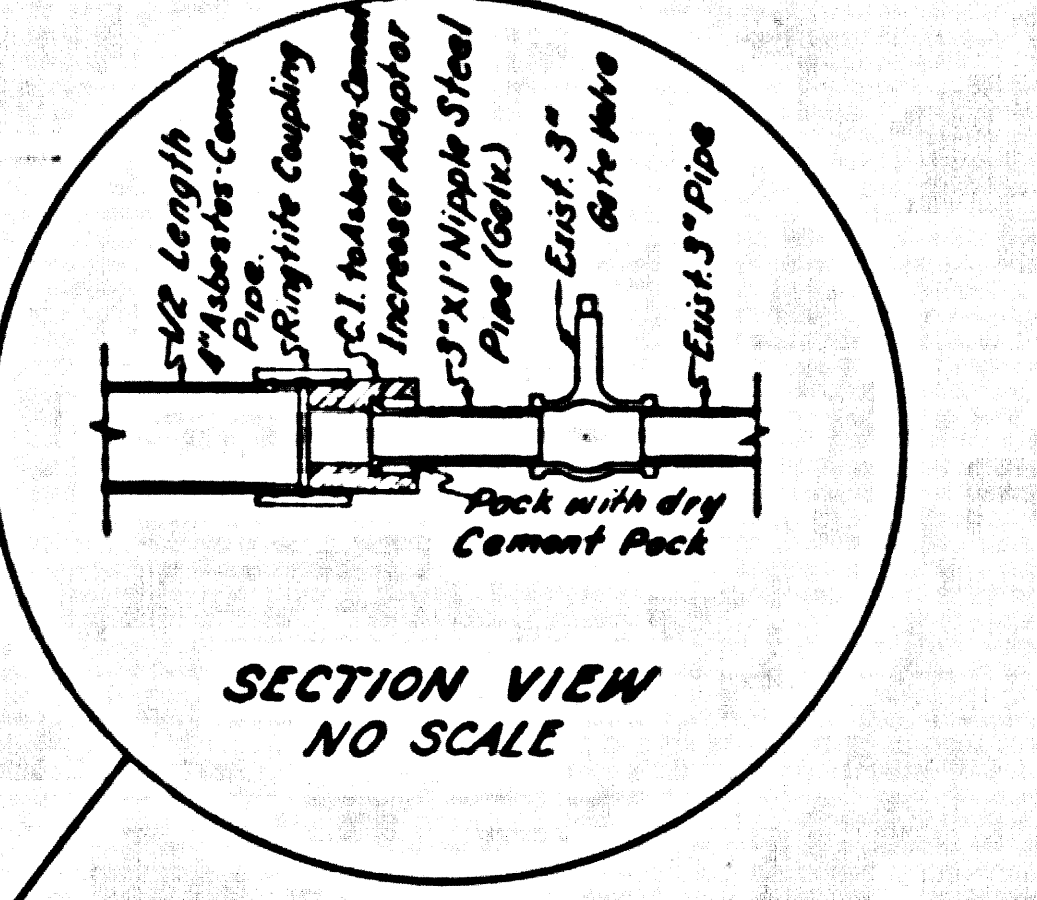
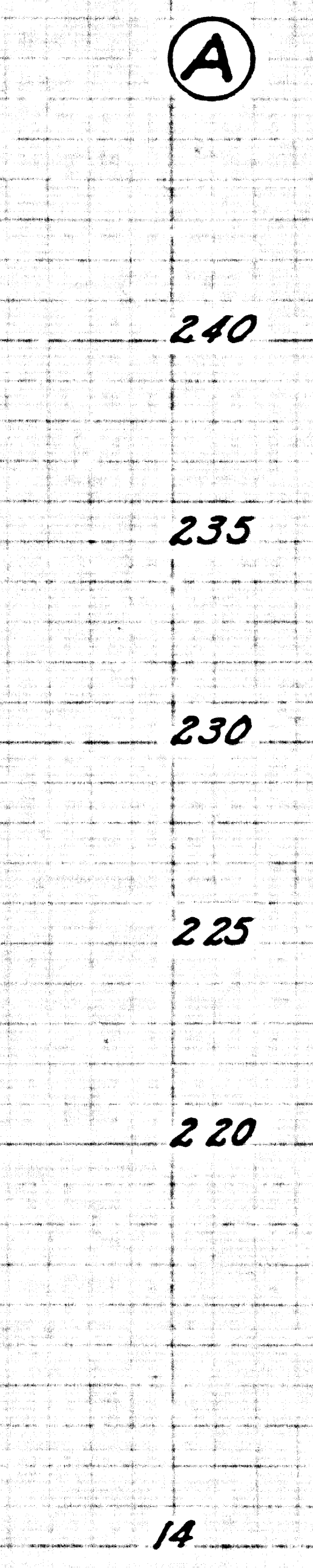
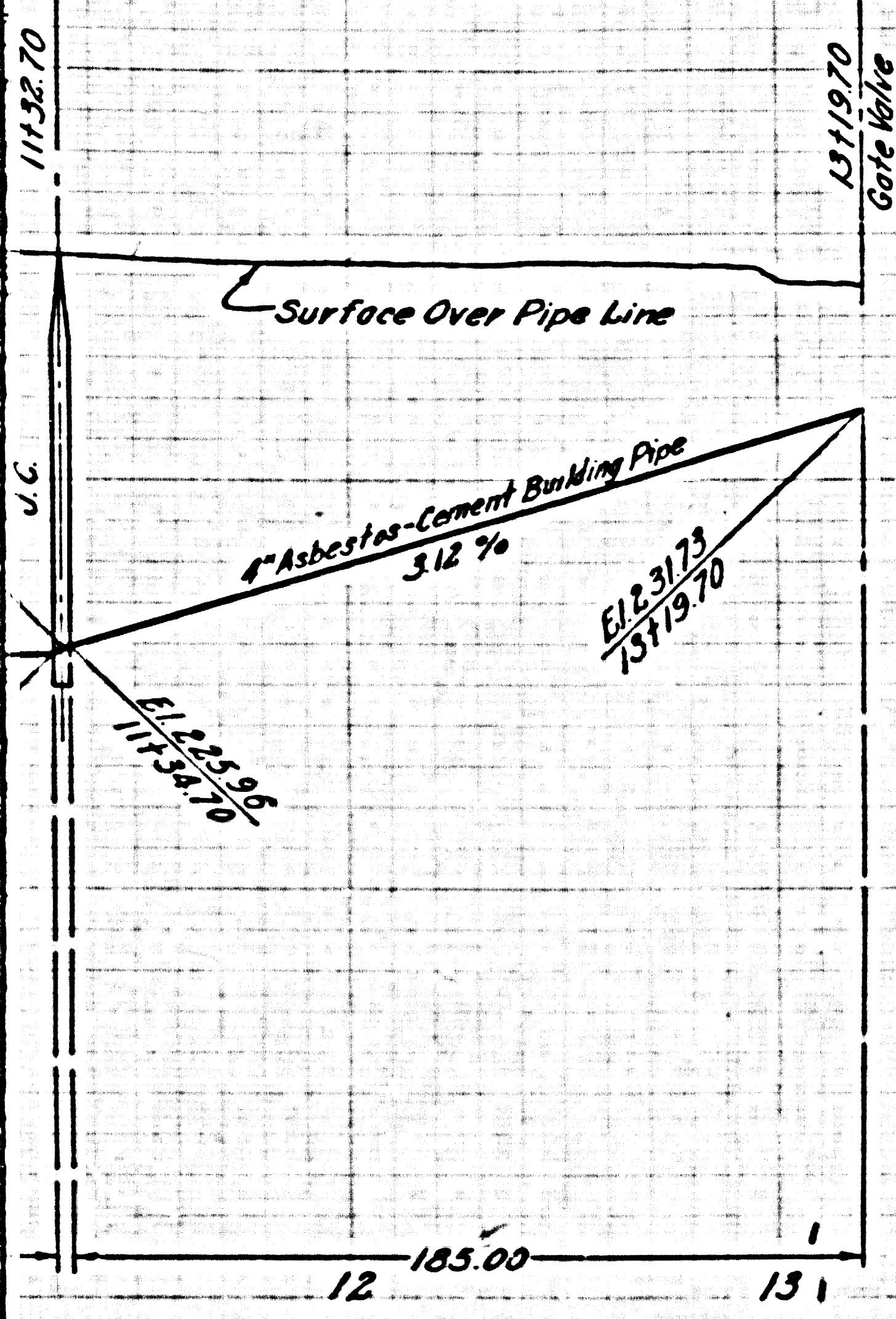


NOTE:  
THE CONTRACTOR SHALL NOTIFY THE CONSTRUCTION AND  
STORM DRAIN DIVISION BY TELEPHONE, MADISON 9-4747,  
EXT. 353, AT LEAST 24 HOURS BEFORE STARTING ANY  
WORK UNDER THIS CONTRACT.

Trim Line

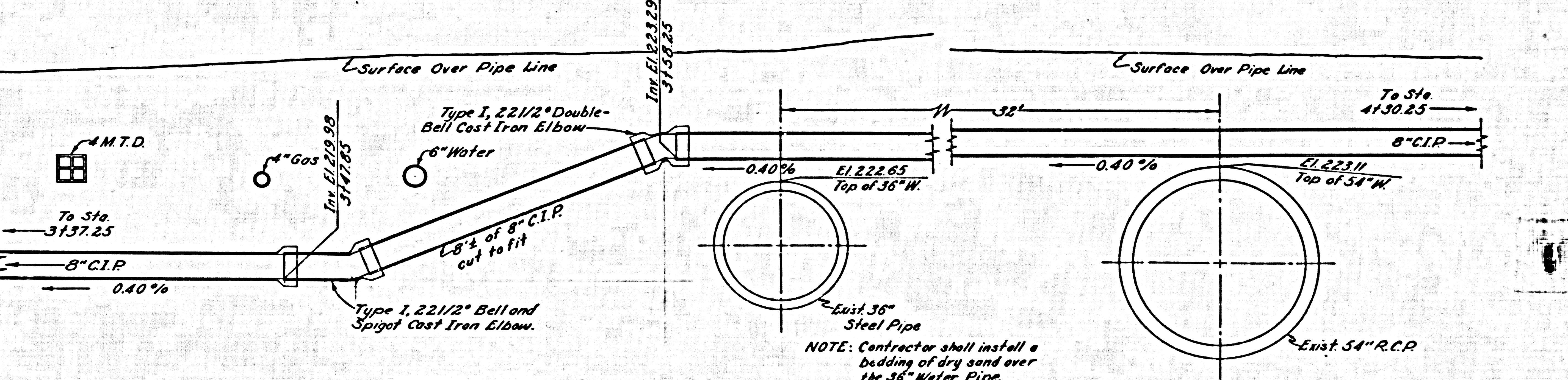
27819  
-1

27,819



NOTE: Remove interfering portion of existing 3\"/>

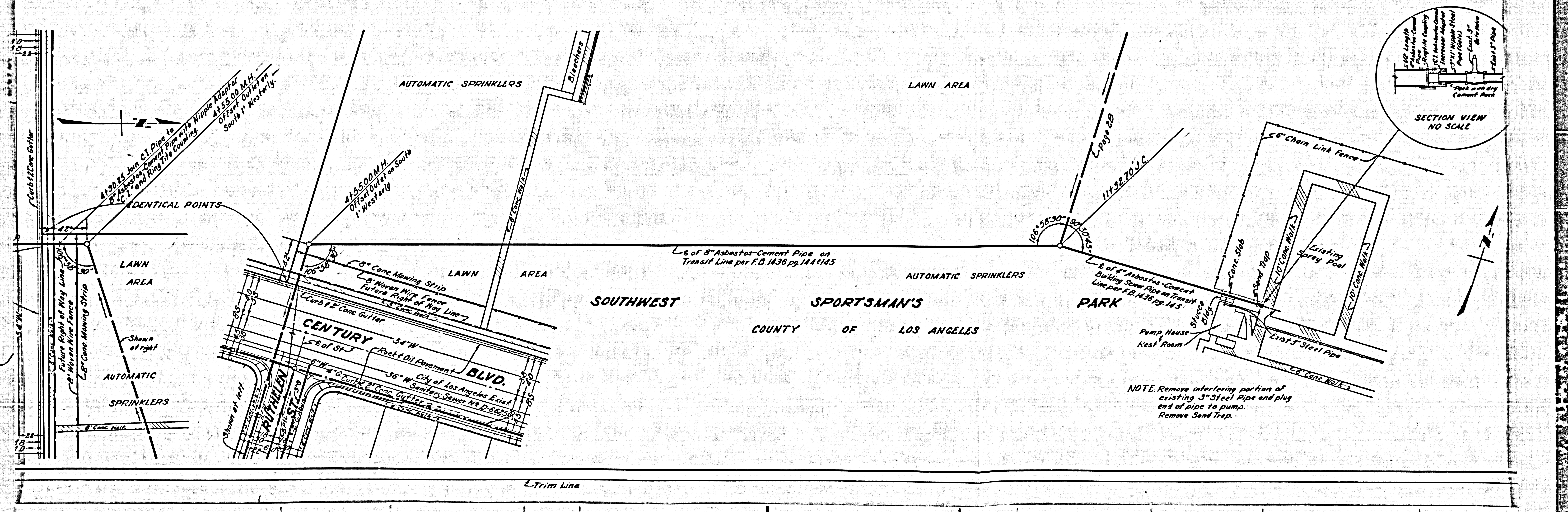
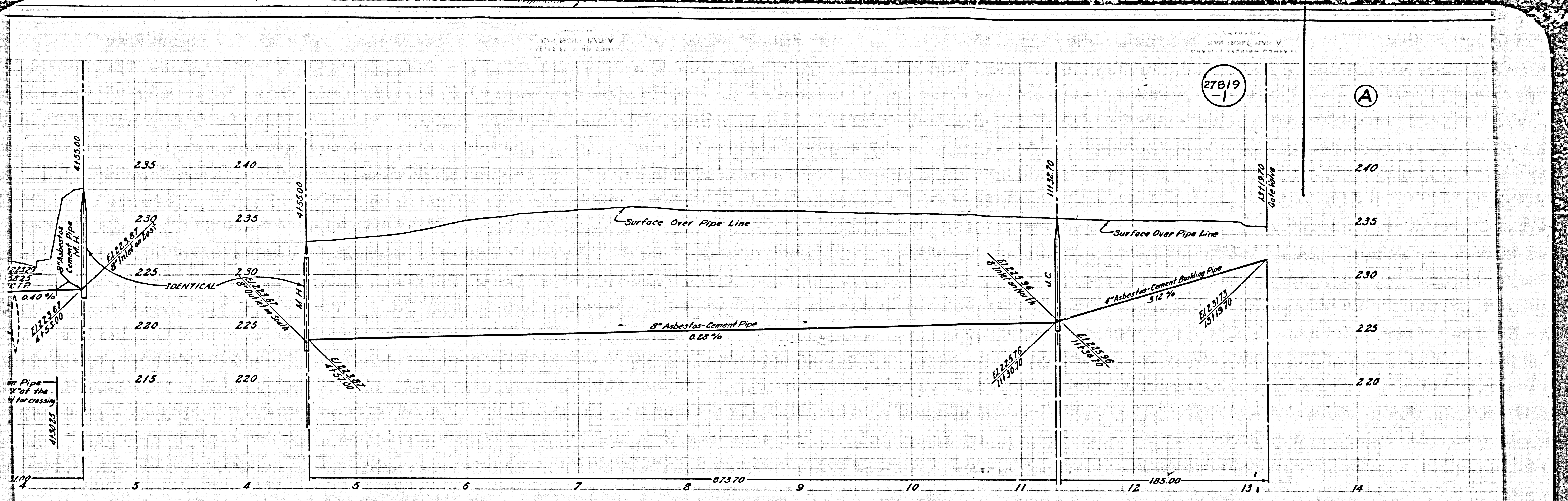
NOTE TO INSPECTOR  
 In case of damage to enamel coating of 36\"/>



DETAIL "X"  
 DETAIL OF 8" C.I.P. CROSSING OF CENTURY BLVD.  
 Scale 1"=2'

NOTE: Contractor shall install a bedding of dry sand over the 36\"/>

P.C. 4879B



STATE ENGINEER  
 CIVIL ENGINE  
 LICENSE NO. 1000

STATE ENGINEER  
 CIVIL ENGINE  
 LICENSE NO. 1000

SW  
 COUNTY OF LOS ANGELES

PARK

NOTE: Remove interfering portion of existing 3" Steel Pipe and plug end of pipe to pump. Remove Sand Trap.

