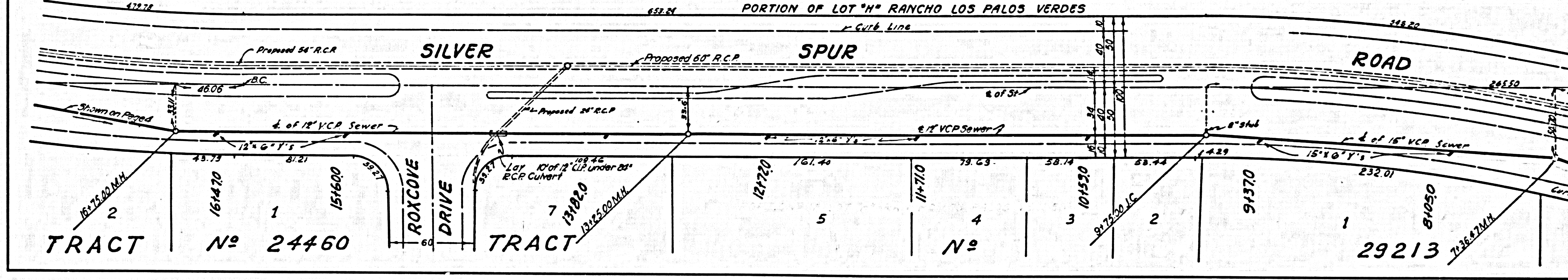
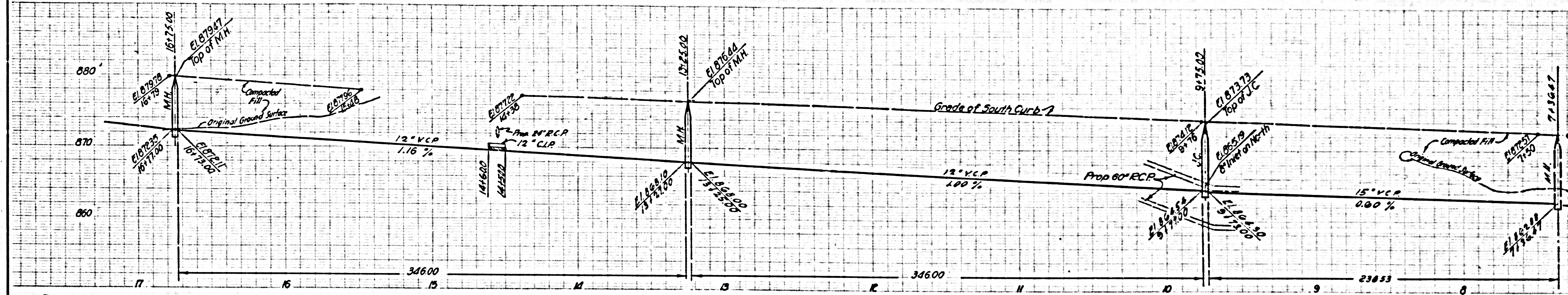






DOUBLE SCALE  
NO CHARGE FOR CONNECTIONS

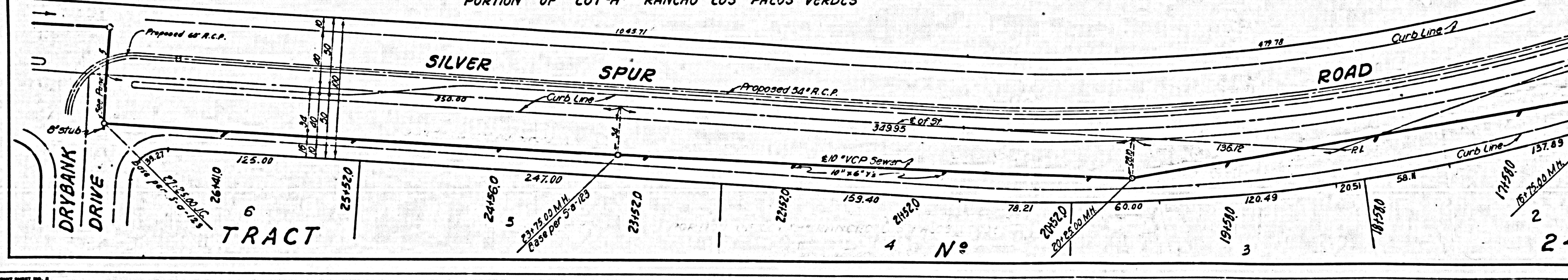
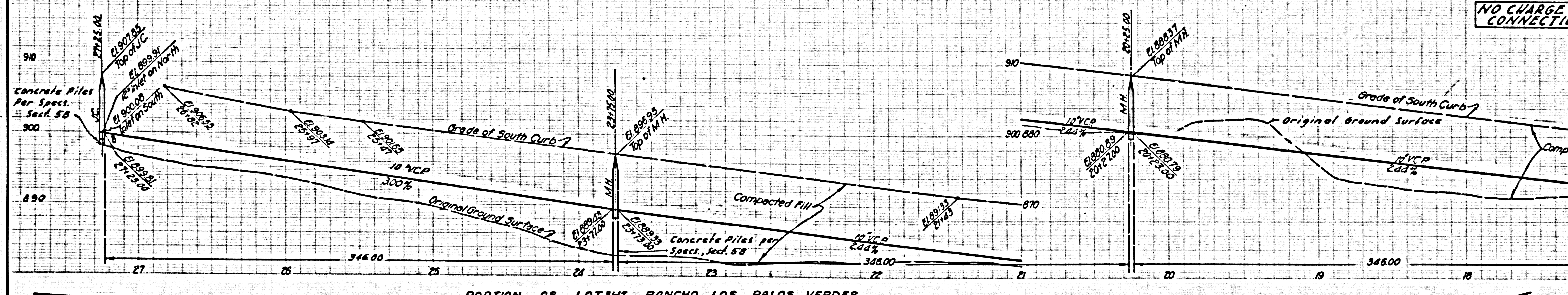
27,847



Pl. 3-18-57

NO CHARGE FOR CONNECTIONS DOUBLE SCALE

27,848



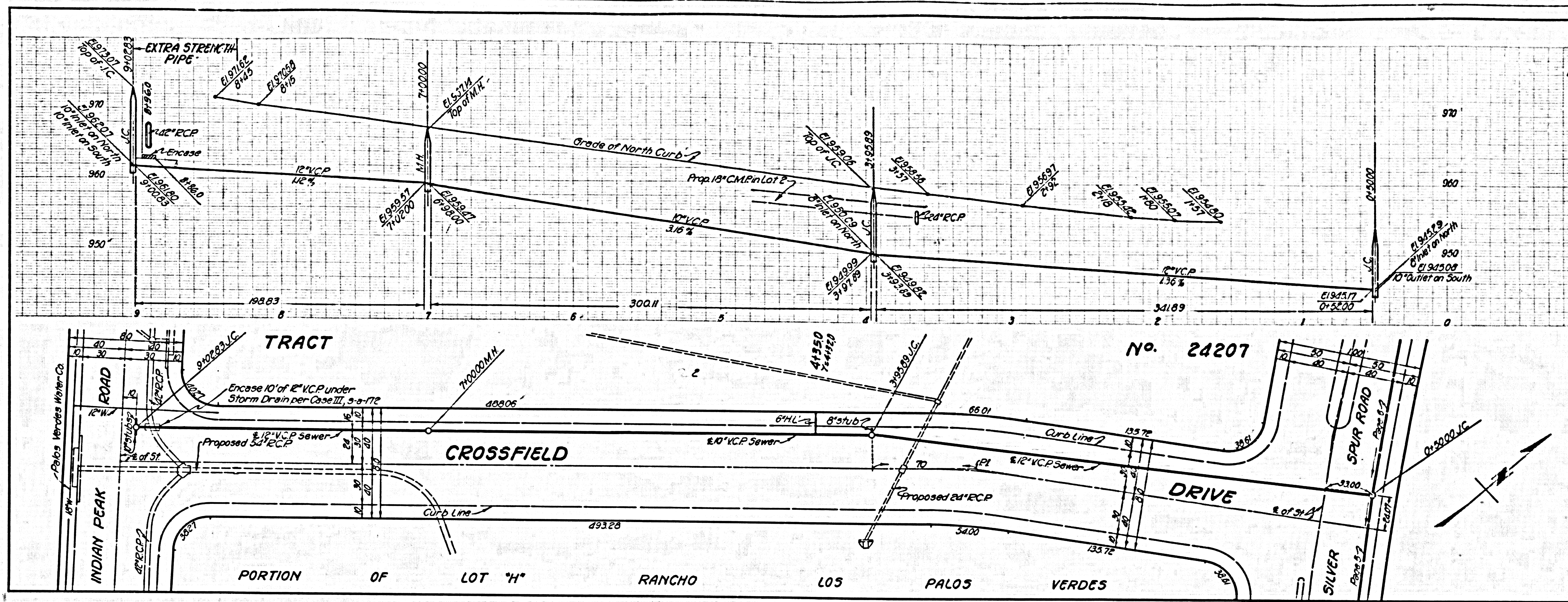
Pl. 3-18-57





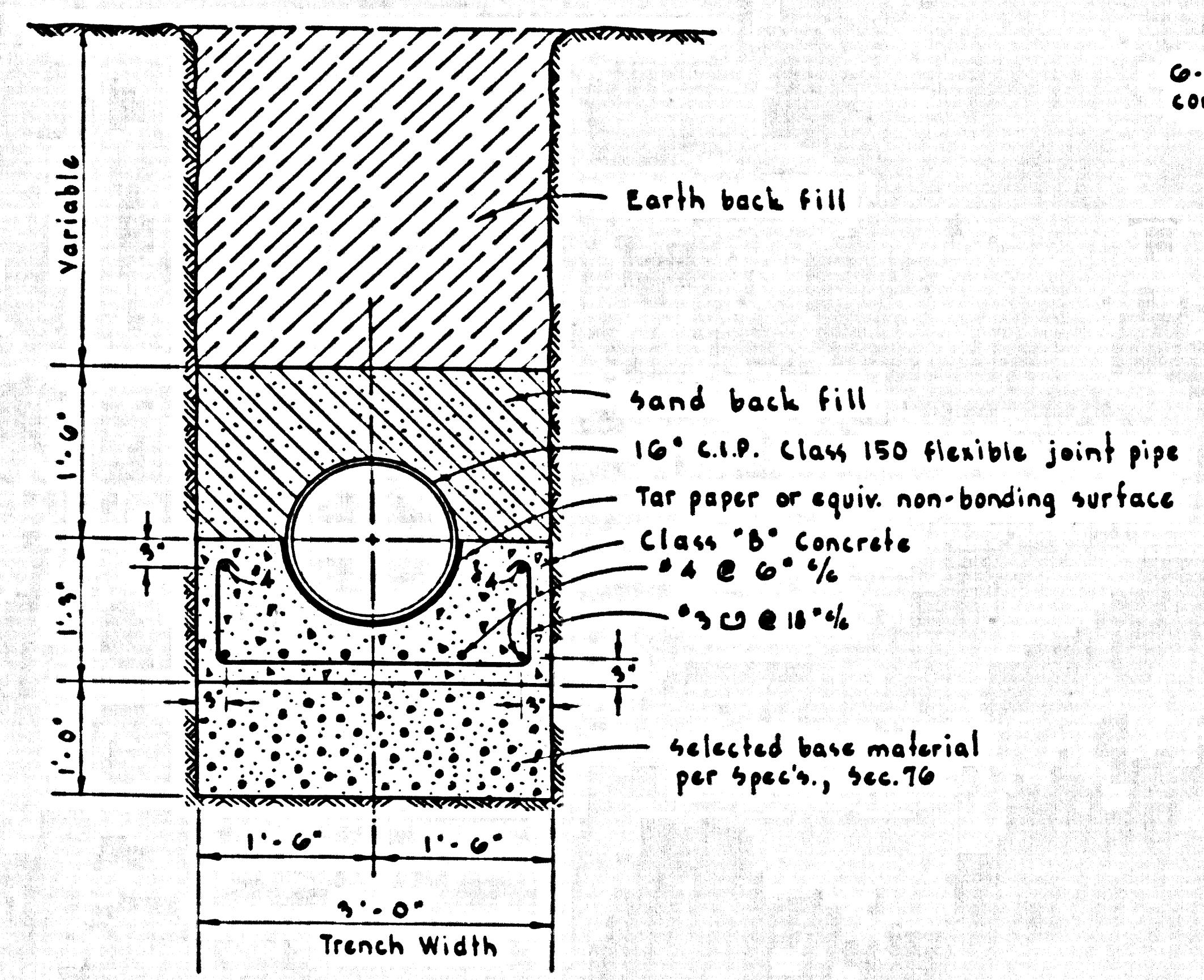


27,851

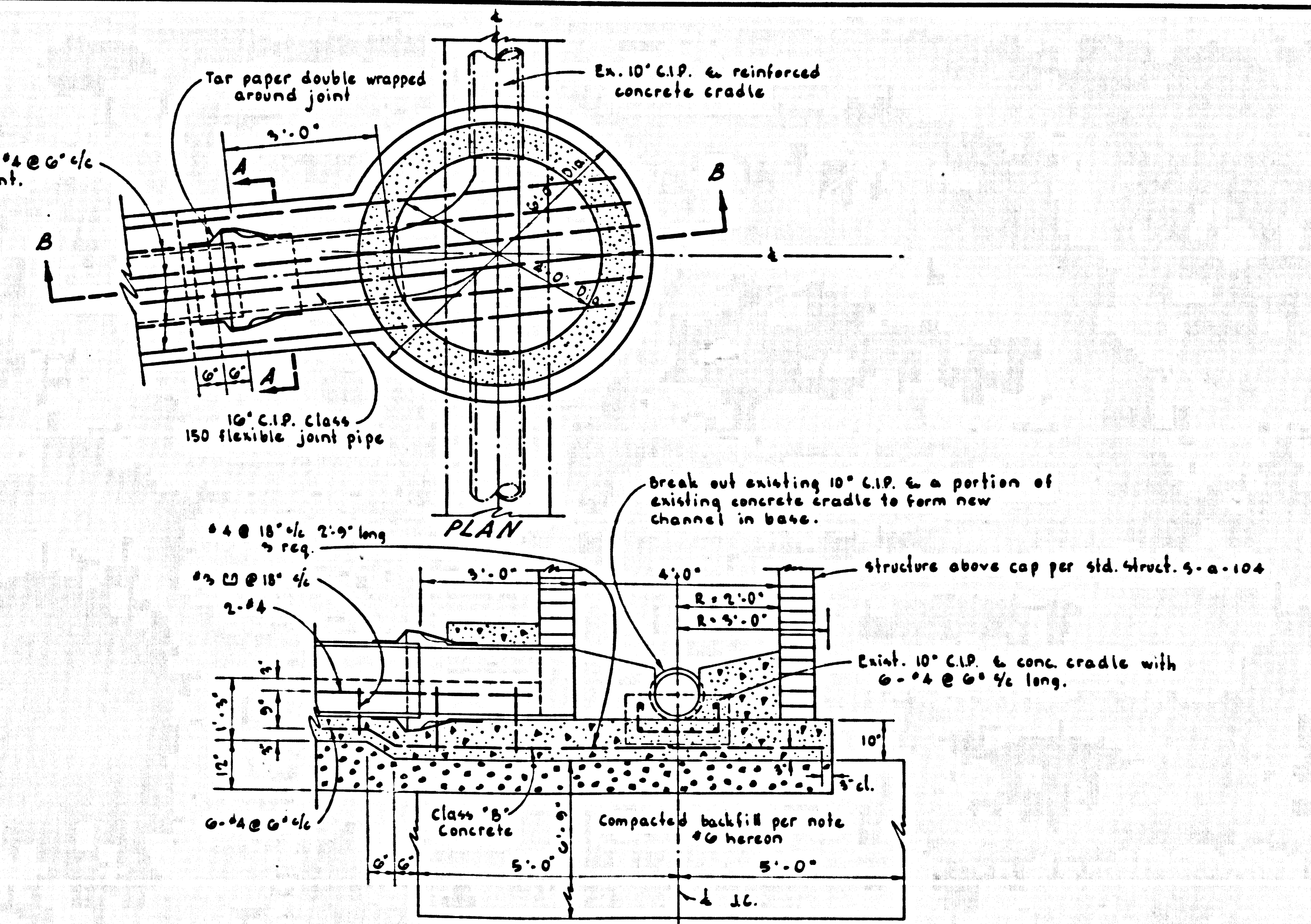


RS 9-18-58

27,852



SECTION A-A  
 CRADLE DETAIL  
 STA. 015403 to STA. 019103  
 Page No. 2  
 SCALE 1/4\"/>



SECTION B-B  
 SPECIAL REINFORCED CONCRETE SUPPORT FOR STANDARD SEWER MANHOLES (STA. 015403 Page 2)  
 SCALE 1/4\"/>

GENERAL NOTES

- 1- Use class "B" concrete per Sec. 51 of Standard Specifications.
- 2- Reinforcing steel bars shall be intermediate deformed bars per Sec. 51 of Std. Spec's. Spacing for bars are center to center of bars and the dimensions from face of conc. to bars are to center of bars unless otherwise shown. The min. lap for steel bars shall be 12 inches.
- 3- Backfilling shall be in accordance with Std. Spec's. except that no flooding of trenches will be allowed and that earth backfill shall be compacted to a relative density equal to the conditions prior to excavation of trench.
- 4- C.I.P. shall not exceed 18 feet max. length and shall be class 150 with flexible joints (mechanical joint, plain end pipe with Dresser couplings or Bell & Spigot pipe with Tylon joints with neoprene gaskets) as specified and approved by the County Engineer.
- 5- Pipe cradle supports shown herein shall be eliminated where field conditions indicate compaction to be greater than 90% relative density; however C.I.P. shall be continued to be used, as shown on the plans.
- 6- Foundations for all M.H.s within Crenshaw Blvd. shall consist of the excavation of a hole approx. 10' sq. & 6'-9" below bottom of M.H. slab. This hole shall be backfilled & compacted to a relative density greater than 90%. The compaction shall be done under the supervision of a Soils Engineer.
- 7- Provide bonding surface between existing concrete cradle and new concrete.