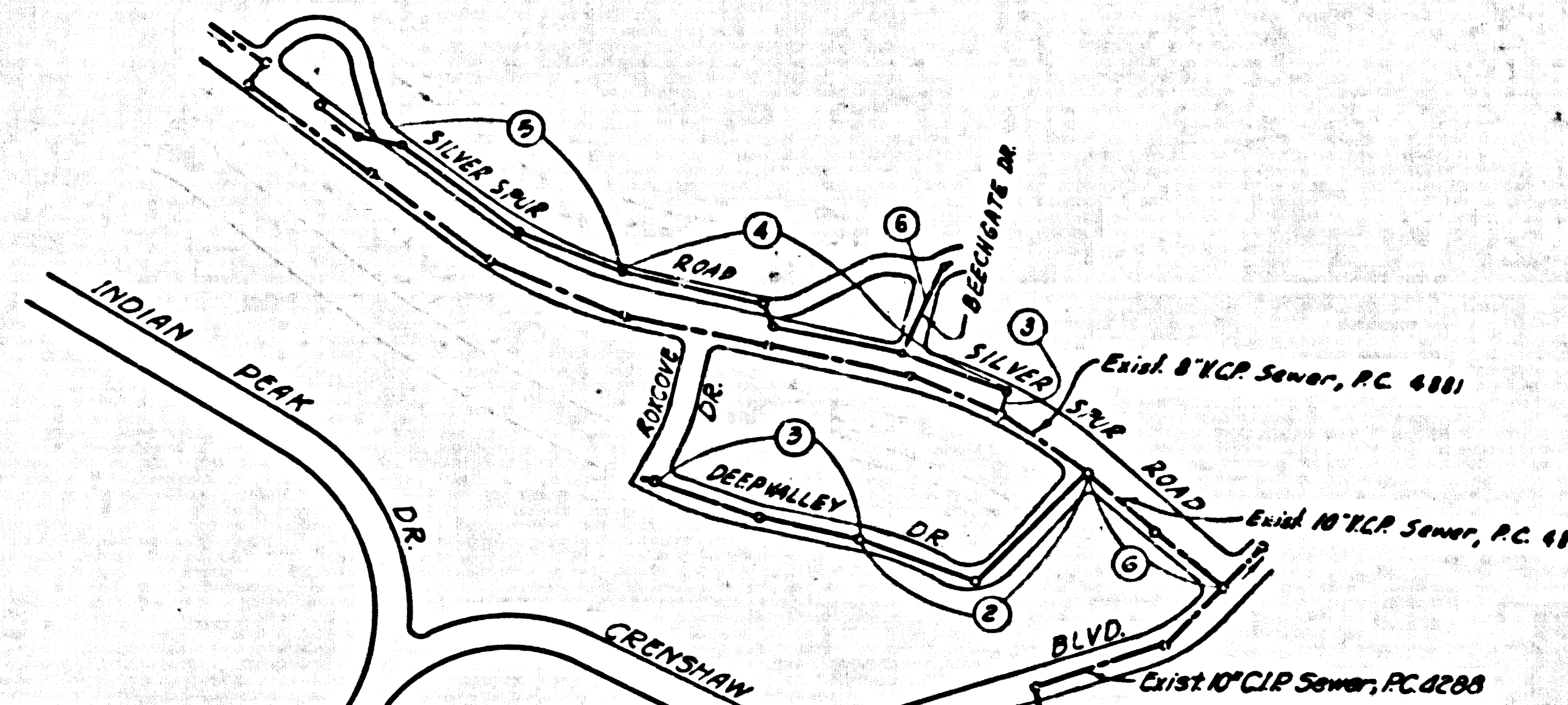


B.M. County Surveyor - U.S.C.G.S. 5th disc stamped  
 0 786-1946 set flush with ground 45.2' N. of &  
 Palos Verdes Drive North 47.4' E. of Narbonne  
 Ave. Elev. 353.518

Note: County Surveyor B.M. 36-E Precise  
 Survey 1953 Adj. 353.583 - ac'd 0065 to all  
 elevations shown hereon to agree with  
 1953 adjustment.



NO CHARGE FOR  
 CONNECTIONS  
 B. Allen 7-2-57

INDEX MAP  
 TRACT NO. 21539  
 SCALE 1"=400'  
 P.C. 4882

DOUBLE SCALE  
 LOMITA BLDG. DIST. NO. 7/1

PROFILE ALIGNMENT AND GRADE OF P.C. 4882  
 SANITARY SEWERS PAGE 1  
 TO BE CONSTRUCTED IN  
 TRACT NO. 21539

PRIVATE CONTRACT NO. 4882  
 W.S. 27

3 SHEETS, 6 PAGES  
 SCALE: VERT. 1"=8'  
 HORIZ. 1"=40'  
 JUNE, 1958

ENGINEERING SERVICE CORPORATION

28,956

- NOTES
- PROVIDE STAKES ON THE PROPERTY LINES OR PROPERTY LINES PRODUCED AT RIGHT ANGLES TO THE SEWER LINE AT THE CENTER LINE OF EACH MANHOLE.
  - NO REPRESENTATIVE OF THE COUNTY ENGINEER WILL SURVEY OR LAYOFF ANY PORTION OF THE WORK.
  - THE OWNER OR HIS AUTHORIZED REPRESENTATIVE SHALL FURNISH THE COUNTY ENGINEER WITH GRADE SHEETS AND STATION FOR ALL HOUSE LATERALS AND T. MANHOLES AND SHALL PROVIDE STAKES FOR THESE AT THEIR PROPER LOCATIONS WITH STATIONING PLAINLY MARKED. ANY CHANGE IN LOCATION SHALL BE REQUESTED BY THE OWNER OR HIS REPRESENTATIVE.
  - NO REVISIONS SHALL BE MADE IN THESE PLANS WITHOUT THE APPROVAL OF THE COUNTY ENGINEER.
  - USE STANDARD MANHOLE FRAMES AND COVERS, 6-1/2" DIA., EXCEPT AS NOTED.
  - USE STANDARD STURDITE PIPE EXCEPT AS NOTED.
  - USE STANDARD MOTOR OR "SPEED-SEAL" FOR ALL VITRIFIED CLAY PIPE JOINTS PER SPEC'S, SEC. 26 & 27.
  - MANHOLE TOPS IN UNIMPROVED AREAS SHALL BE 4" ABOVE FINISHED GRADE.
  - MANHOLE TOPS IN IMPROVED AREAS SHALL BE 6" ABOVE FINISHED GRADE.
  - THE ENGINEER'S DESIGN IS TO PROVIDE THE HOUSE LATERAL DEPTH AT THE PROPERTY LINE BELOW THE TOP OF CURB ELEVATION FOR EACH HOUSE LATERAL ON THE GRADE SHEET.
  - THE CONTRACTOR SHALL NOTIFY THE CONSTRUCTION AND STORM DRAIN DIVISION OF TELEPHONE, RAILROAD, GAS, ETC. LINES AS SHOWN ON PLANS BEFORE BEGINS ANY WORK UNDER THIS CONTRACT.
  - NO CONSTRUCTION SHALL BE PERMITTED IN FILLED AREAS UNLESS ACCEPTABLE CERTIFICATION IS SUBMITTED TO THE CONSTRUCTION DIVISION OF THE COUNTY ENGINEER'S DEPARTMENT THAT COMPACTNESS IS GREATER THAN 90%.
  - IF CONSTRUCTION IS LESS THAN 90% THE SEWER MUST BE GRADED AS SHOWN ON PLANS.
  - IF CONSTRUCTION IS GREATER THAN 90%, CRACKLING AND SPALLING SHALL BE REPAIRED. MANHOLES, PLASTIC JOINTS MUST BE SUBSTITUTED FOR CONCRETE MANHOLES FOR ALL JOINTS IN FILLER AREAS.
  - MINIUM SEWERS CROSSING STORM DRAIN NOT OTHERWISE CRODLED SHALL BE CRODLED PER S-173, CODE III.
  - STANDARD SPECIFICATIONS DATED MAY 10, 1950 APPLY TO THE CONSTRUCTION OF THIS PROJECT.

ENGINEERING SERVICE CORPORATION			
1127 W. WASHINGTON BLVD.			
LOS ANGELES 15, CALIF.		RI. 9-7281	
REVISIONS			
ADDED 275' MAIN LINE PG. 6	A.A.M.	TRACED BY	CH.F.B.B.
		DES'G'D BY	CH.F.B.B.
		C.K'D BY	
		SUBMITTED	
SUB STRUCTURES O.K'D			
W. O. NO.	SEWER NO.	DATE	SCALE
6777-70		June, 1958	As Noted

NOTES

GRADES TO WHICH THIS IMPROVEMENT IS TO BE CONSTRUCTED ARE SHOWN ON PLANS AND PROFILE. GRADE POINTS FOR TOP OF CURB, CENTER LINE OF STREETS, OR CENTER LINE OF ALLEYS ARE SHOWN BY CIRCLES ON PROFILES. AT ALL POINTS BETWEEN RESIDUAL POINTS THE GRADE SHALL BE ESTABLISHED SO AS TO CONFORM TO A STRAIGHT LINE DRAWN BETWEEN SAID RESIDUAL POINTS.

ELEVATIONS ARE IN FEET ABOVE U.S.C. 1955 SEA LEVEL DATUM OF 1929.

THE DRAWINGS AND THE DATA HEREON ARE HEREBY MADE A PART OF THE SPECIFICATIONS.

WORK SHALL BE CONSTRUCTED ACCORDING TO SPECIFICATIONS ON FILE IN THE OFFICE OF THE COUNTY ENGINEER AND SHALL BE PROSECUTED ONLY IN THE PRESENCE OF THE COUNTY ENGINEER.

BEFORE WORK CAN BE STARTED, THE CONTRACTOR MUST OBTAIN A PERMIT TO EXCAVATE IN COUNTY STREETS FROM THE L. & C. COUNTY ROAD DEPT. BUT NOT BE AND MAKE A REPORT WITHIN THE COUNTY ENGINEER'S ROOM AND PAY AN ANNUAL FEE OF \$25.00. ROADWAY APPLICANT TO COVER THE COST OF CONSTRUCTION INSPECTION AND RECORD PLANS.

APPROVAL OF THIS PLAN BY THE COUNTY OF LOS ANGELES DOES NOT CONSTITUTE A REPRESENTATION AS TO THE ACCURACY OF THE LOCATION OF OR THE EXISTENCE OR NON-EXISTENCE OF ANY UNDERGROUND UTILITY PIPES, OR STRUCTURE WITHIN THE LIMITS OF THIS PROJECT. THE BOTS APPLICANT TO ALL PLANS.

IF WORK IS TO BE DONE IN A STATE HIGHWAY, A PERMIT MUST BE OBTAINED FROM THE STATE OF CALIFORNIA, DIVISION OF HIGHWAYS, 120 SOUTH SPRING STREET.

COUNTY OF LOS ANGELES, CALIFORNIA

APPROVED, JOHN A. LAMME, COUNTY ENGINEER

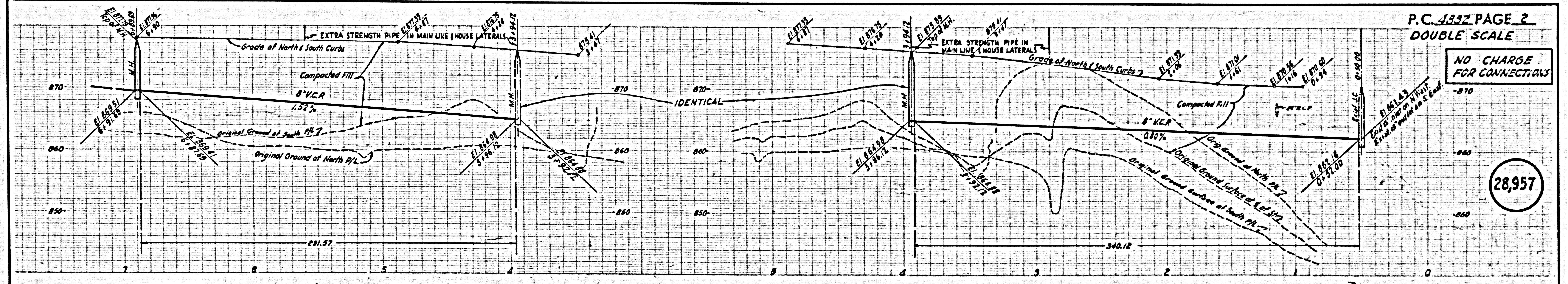
APPROVED, C.E. COMPTON, CHIEF ENGINEER

BY *[Signature]* LAMINATION ENGINEER

BY *[Signature]* OFFICE ENGINEER

CHECKED BY *[Signature]* 7-3-58

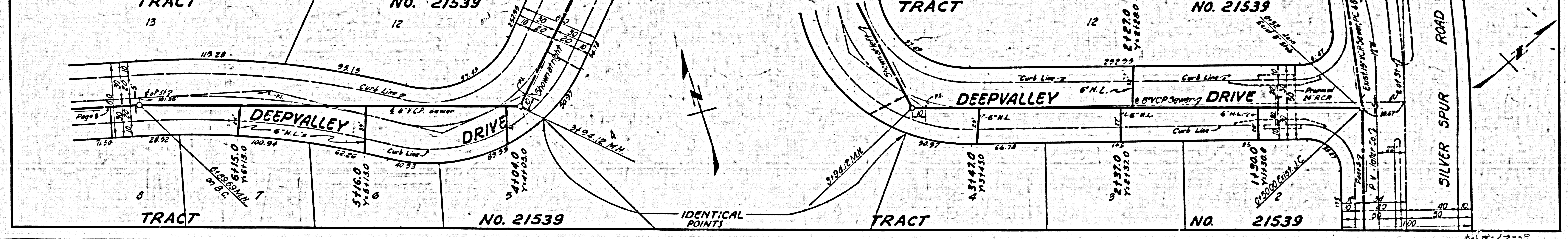
OFFICE OF COUNTY ENGINEER, REG. C. & NO. 9495



P.C. 4882 PAGE 2  
 DOUBLE SCALE

NO CHARGE FOR CONNECTIONS

28,957



TRACT NO. 21539

TRACT NO. 21539

TRACT NO. 21539

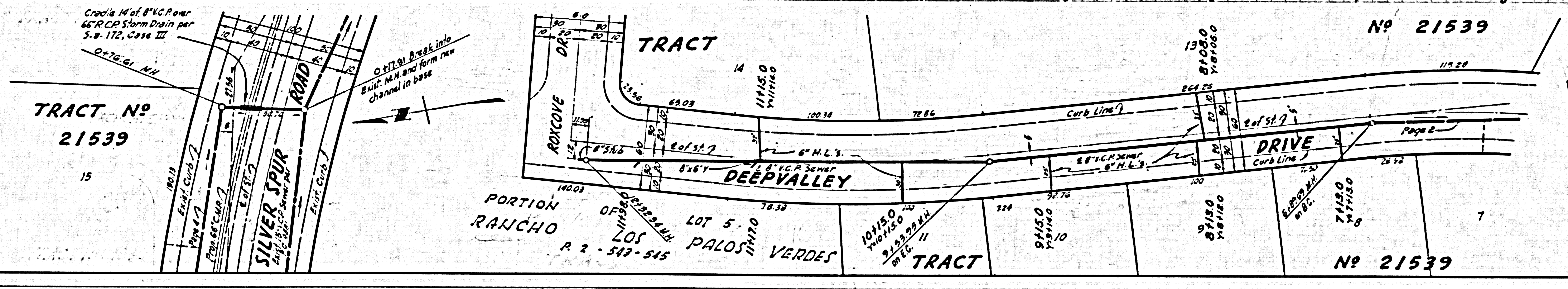
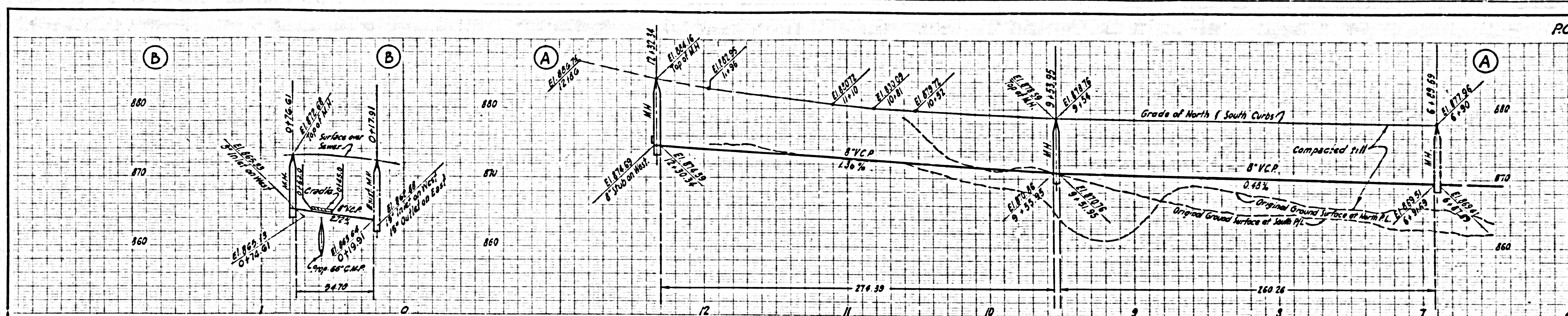
TRACT NO. 21539

IDENTICAL POINTS



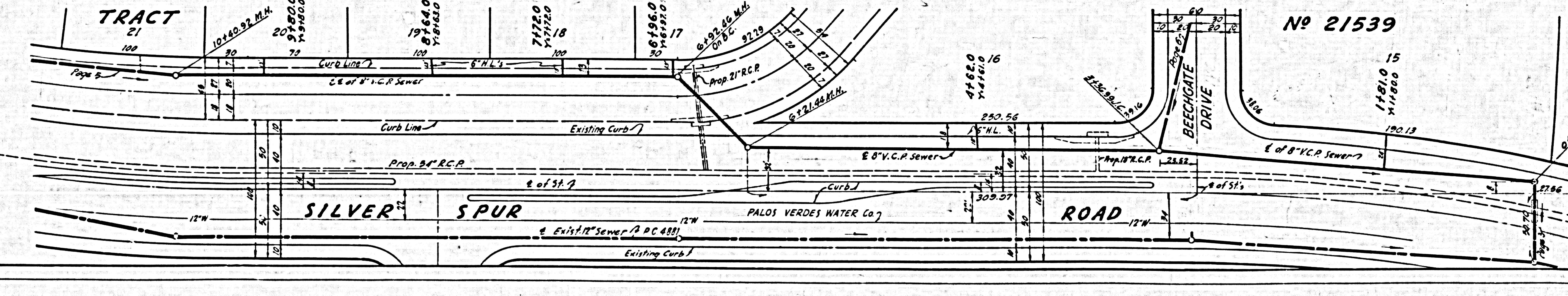
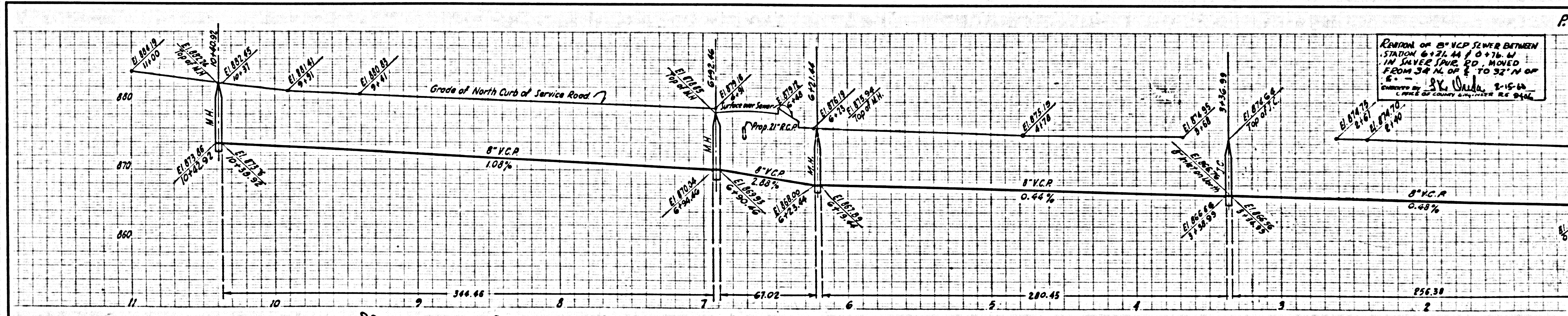
NO CHARGE FOR CONNECTIONS  
DOUBLE SCALE

28,958



NO CHARGE FOR CONNECTIONS  
DOUBLE SCALE

28,959



REGION OF 8" V.C.P. SEWER BETWEEN STATION 6+21.44 TO 7+76.44 IN SILVER SPUR RD. MOVED FROM 34' N. OF E. TO 32' N. OF E. - 1-15-64

Checked by: J.K. O'Neil, 2-15-64

Corrected by: J.K. O'Neil, 2-15-64

Checked by: J.K. O'Neil, 2-15-64

Corrected by: J.K. O'Neil, 2-15-64

Checked by: J.K. O'Neil, 2-15-64

Corrected by: J.K. O'Neil, 2-15-64

Checked by: J.K. O'Neil, 2-15-64

Corrected by: J.K. O'Neil, 2-15-64

Checked by: J.K. O'Neil, 2-15-64

Corrected by: J.K. O'Neil, 2-15-64

Checked by: J.K. O'Neil, 2-15-64

Corrected by: J.K. O'Neil, 2-15-64

Checked by: J.K. O'Neil, 2-15-64

Corrected by: J.K. O'Neil, 2-15-64

Checked by: J.K. O'Neil, 2-15-64

Corrected by: J.K. O'Neil, 2-15-64

Checked by: J.K. O'Neil, 2-15-64

Corrected by: J.K. O'Neil, 2-15-64

Checked by: J.K. O'Neil, 2-15-64

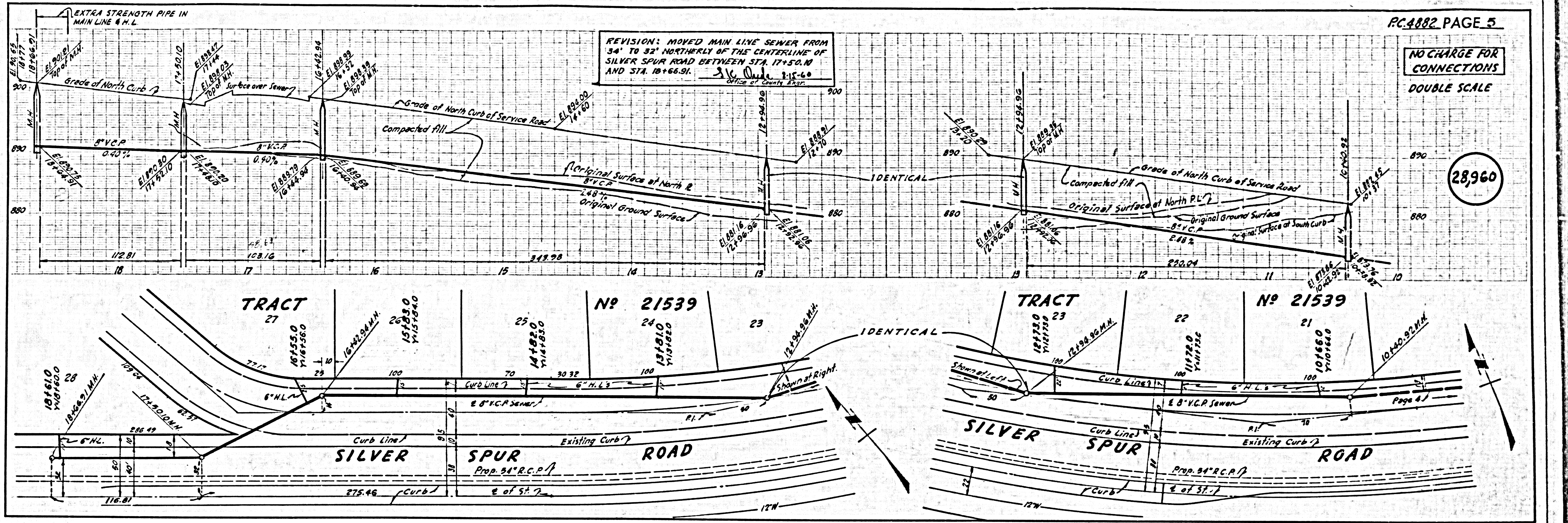
Corrected by: J.K. O'Neil, 2-15-64

Checked by: J.K. O'Neil, 2-15-64

Corrected by: J.K. O'Neil, 2-15-64

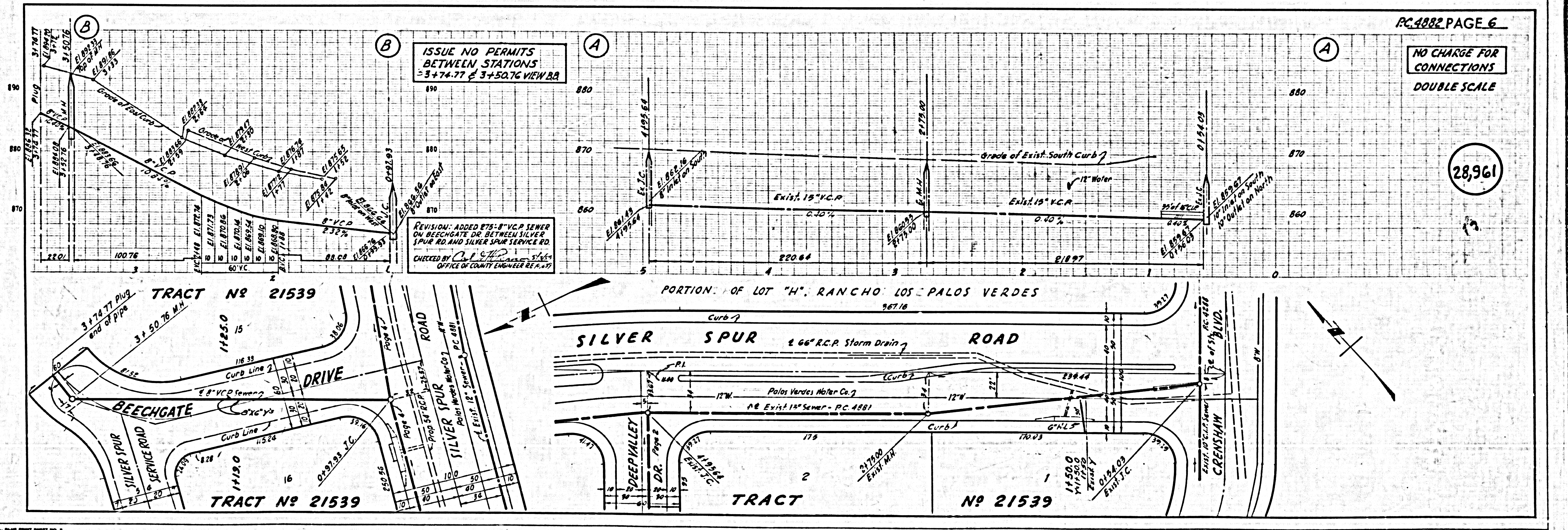


NO CHARGE FOR CONNECTIONS  
DOUBLE SCALE



28,960

NO CHARGE FOR CONNECTIONS  
DOUBLE SCALE



28,961