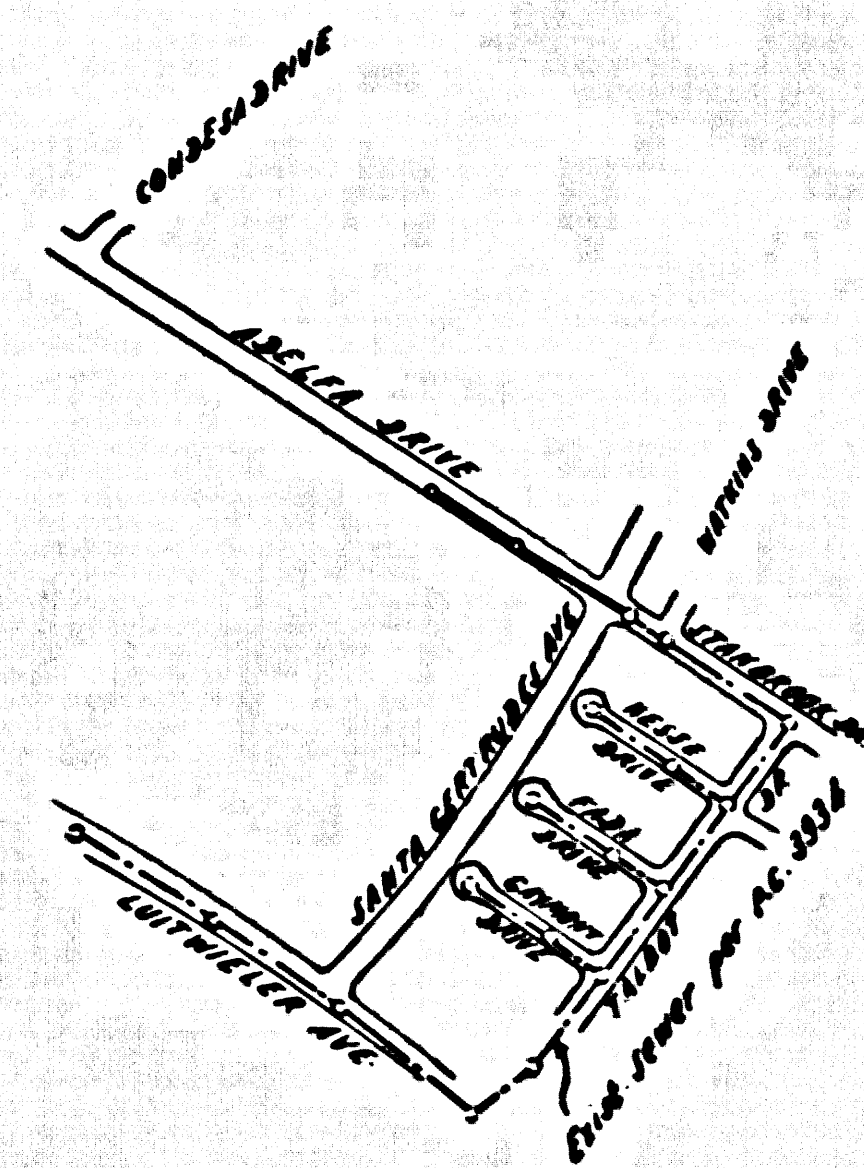


BENCH MARK

Stage Rd. and Luiswiler Ave. A Sd. County Surveyor Monument Marked 42.23 27.22 Set in concrete 16" below the surface of the intersection of the center line of Luiswiler Ave and the center line of Alondra Blvd. a well cut through the pavement and protected by a Cast Iron Cover marked "County Surveyor Monument" Co. Surv. F.B. 1204-6 1952 Adj. Elev. 109.862



INDEX MAP
Scale: 1:600

NORWALK BLDG. DIST. NO. 4.2

NOTE:

- 1. PROVIDE STAKES ON THE PROPERTY LINE OR PROPERTY LINES PRODUCED AT RIGHT ANGLES TO THE SEWER LINE AT THE CENTER LINE OF EACH MANHOLE.
- 2. NO REPRESENTATIVE OF THE COUNTY ENGINEER WILL SURVEY OR LAYOUT ANY PORTION OF THE WORK.
- 3. THE OWNER OR HIS AUTHORIZED REPRESENTATIVE SHALL FURNISH THE COUNTY ENGINEER WITH GRADE SHEETS AND STATION FOR ALL HOUSE LATERALS AND Y BRANCHES AND SHALL PROVIDE STAKES FOR THEM AT THEIR PROPOSED LOCATIONS WITH STATIONING PLAINLY MARKED. ANY CHANGE IN LOCATION SHALL BE REQUESTED BY THE OWNER OR HIS REPRESENTATIVE.
- 4. NO REVISIONS SHALL BE MADE IN THESE PLANS WITHOUT THE APPROVAL OF THE COUNTY ENGINEER.
- 5. USE STANDARD MANHOLE FRAMES AND COVERS, S.A.-117.
- 6. USE STANDARD STRENGTH PIPE.
- 7. USE CEMENT MORTAR "HEAD-LESS" OF "SPEED-SEAM" FOR ALL V.C.P. JOINTS AND SPEC. SECT. 26.1.4.
- 8. SURFACE ALL TRENCHES WITHIN PAVED AREAS TO MEET L. & C. COUNTY ROAD DEPT., OR CALIF. STATE HIGHWAY DEPT. SPECIFICATIONS IN ACCORDANCE WITH PERMITS.
- 9. BRIDGE FOUR FEET OF SEWER AT POINTS OF INTERFERENCE WITH POLES, S.A.-172, CASE 2E.
- 10. HOUSE LATERALS TO BE CONSTRUCTED WITH 4" DIA. PIPE FOR FEET TO PROPERTY LINE.
- 11. ALL STRUCTURES SHALL BE BRICK SEWER STRUCTURES, S.A.-194.
- 12. FOR ALLOWABLE LEAKAGE TEST USE FORMULA NO. 1 SPEC. SEC. 24.
- 13. MANHOLE TOPS IN UNIMPROVED RIGHTS-OF-WAY TO BE 6" ABOVE FINISHED GRADE.
- 14. THE PRIVATE ENGINEER IS TO FURNISH THE HOUSE LATERAL DEPTH AT THE PROPERTY LINE BELOW THE TOP OF CURB ELEVATION FOR EACH HOUSE LATERAL, ON THE GRADE SHEET.
- 15. THE CONTRACTOR SHALL NOTIFY THE CONSTRUCTION AND STORM DRAIN DIVISION BY TELEPHONE, MADISON 9-4743 EXT. 368, AT LEAST 24 HOURS BEFORE STARTING ANY WORK UNDER THIS CONTRACT.
- 16. THE CONTRACTOR SHALL SATISFY HIMSELF OF ALL SUBSTRUCTURES AND SHALL BE RESPONSIBLE FOR THEIR LOCATION.

COLLECT CHARGES AS INDICATED
S. L. 10-1-53

PROFILE ALIGNMENT AND GRADE OF **P.C. 4886**
SANITARY SEWERS PAGE **1**
TO BE CONSTRUCTED IN

26360

ADELFA DRIVE

PRIVATE CONTRACT NO. 4886

W.S. 34

1 SHEETS, 2 PAGES

SCALE: VERT. 1"=6' HORIZ. 1"=60' AUGUST, 1958

PREPARED IN THE OFFICES OF

MCINTIRE & QUIROS INC.

BY Charles McIntire 2-1-58
REG. P. E. NO. 3328

FOR LEGEND SEE PLAN NO. S-A-64

NOTE:
GRADES TO WHICH THIS IMPROVEMENT IS TO BE CONSTRUCTED ARE SHOWN ON PLANS AND PROFILE. GRADE POINTS FOR TOP OF CURB, CENTER LINE OF STREETS, OR CENTER LINE OF ALLEYS ARE SHOWN BY CIRCLES ON PROFILES. AT ALL POINTS BETWEEN INDICATED POINTS THE GRADE SHALL BE ESTABLISHED SO AS TO CONFORM TO A STRAIGHT LINE BEYOND SAID INDICATED POINTS.
ELEVATIONS ARE IN FEET ABOVE U.S.C. & G.S. SEA LEVEL. (SHOW ON PLAN)
THE DRAWING AND THE DATA HEREON ARE HEREBY MADE A PART OF THE SPECIFICATIONS.
WORK SHALL BE CONSTRUCTED ACCORDING TO SPECIFICATIONS ON FILE IN THE OFFICE OF THE COUNTY ENGINEER AND SHALL BE PROSECUTED ONLY IN THE PRESENCE OF THE COUNTY ENGINEER.
BEFORE WORK CAN BE STARTED, THE CONTRACTOR MUST OBTAIN A PERMIT TO EXCAVATE IN COUNTY SHEETS FROM THE L. & C. COUNTY ROAD DEPT., 126 W. 5TH ST. AND MAKE A DEPOSIT WITH THE COUNTY ENGINEER, ROOM 224 MAIN AMERICAN BLDG., 333 SO. BROADWAY SUFFICIENT TO COVER THE COST OF CONSTRUCTION INSPECTION AND RECORD PLANS.
APPROVAL OF THIS PLAN BY THE COUNTY OF LOS ANGELES DOES NOT CONSTITUTE A REPRESENTATION AS TO THE ACCURACY OF THE LOCATION OF OR THE EXISTENCE OR NON-EXISTENCE OF ANY UNDERGROUND UTILITY PIPE, OR STRUCTURE WITHIN THE LIMITS OF THIS PROJECT. THIS NOTE APPLIES TO ALL PAGES.
IF WORK IS TO BE DONE IN A STATE HIGHWAY, A PERMIT MUST BE OBTAINED FROM THE STATE OF CALIFORNIA, DIVISION OF HIGHWAYS, 128 SOUTH SPRING STREET.

COUNTY OF LOS ANGELES, CALIFORNIA

APPROVED, JOHN A. LAMBE, COUNTY ENGINEER

APPROVED, A. M. BAWN, CHIEF ENGINEER

BY John A. Lambe
COUNTY ENGINEER

BY A. M. Bawn
CHIEF ENGINEER

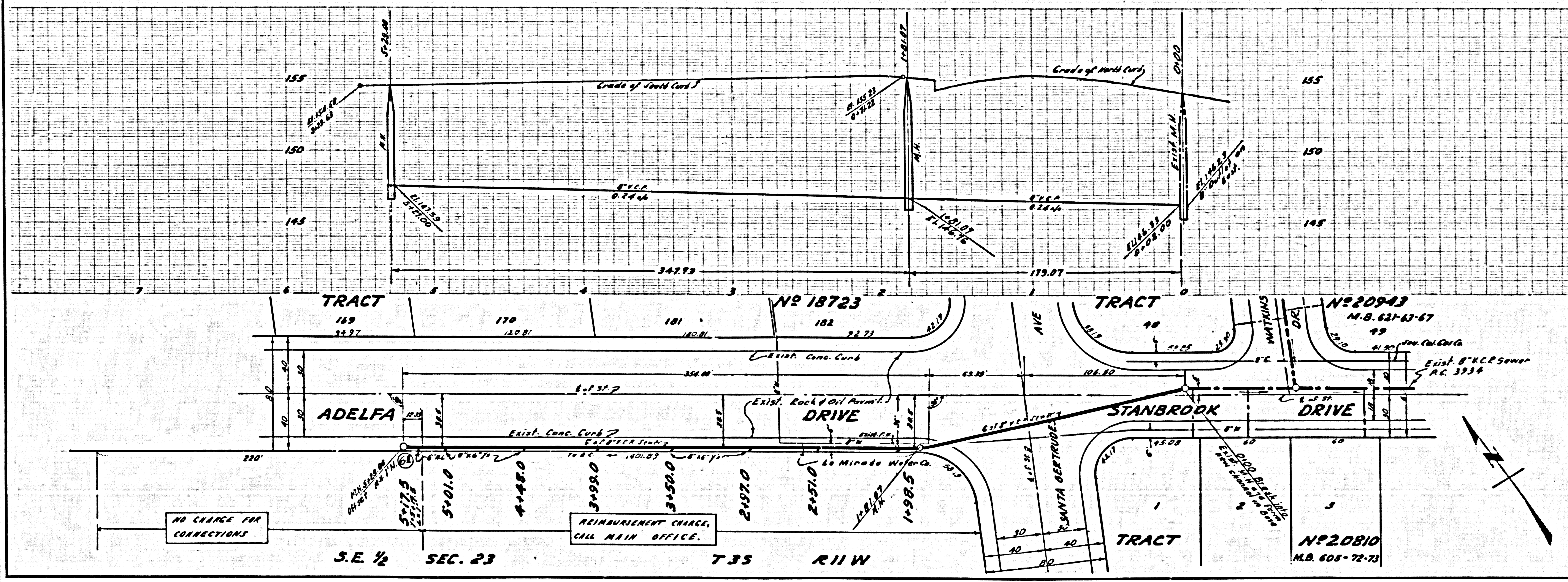
CHECKED BY W. O. Deane
OFFICE OF COUNTY ENGINEER, 200 C. & N. 24th

APPROVED BY
INDUSTRIAL WASTE DIVISION
BY Samuel J. Uelandy DATE 9/4/58

P.C. 4886 PAGE 2

COLLECT CHARGES AS INDICATED

26361



NO CHARGE FOR CORRECTIONS

REIMBURSEMENT CHARGE, CALL MAIN OFFICE.

S.E. 1/4 SEC. 23

T35 R11W

TRACT NO. 20810 M.B. 605-72-73

RL 8-20-58