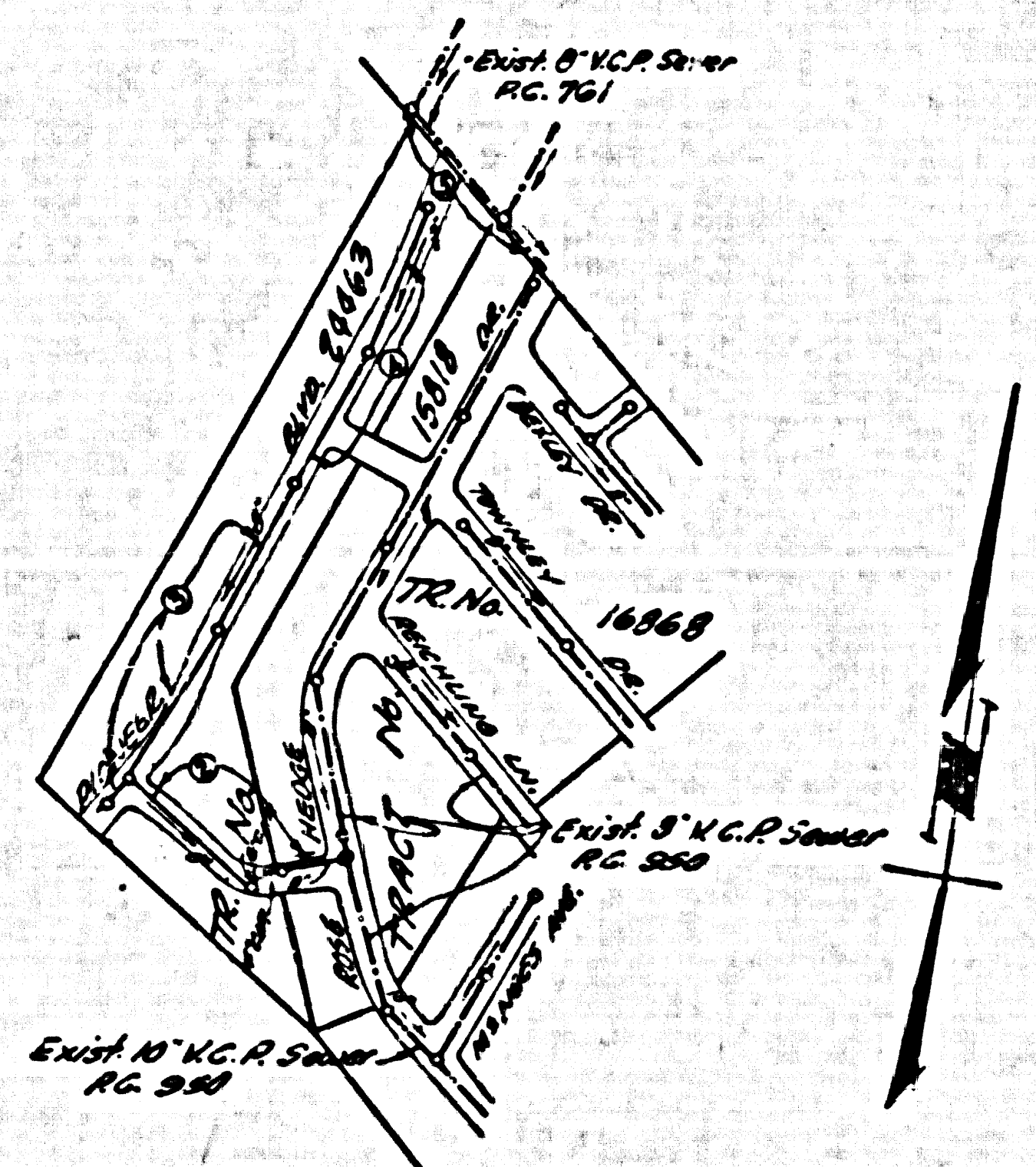


WHITTIER BLDG. DIST. NO. 11

PROFILE ALIGNMENT AND GRADE OF P.C. 4893
 SANITARY SEWERS PAGE 1
 TO BE CONSTRUCTED IN
 TRACT No. 24463

PRIVATE CONTRACT NO. 4893
 W.S. 37
 5 SHEETS, 7 PAGES
 SCALE: VERT. 1"=4' HORIZ. 1"=40' September, 1950
 PREPARED IN THE OFFICE OF
 KEMMERER ENGR. CO., INC.
 BY: *Thomas C. Kemmerer*
 REG. C. E. NO. 26868



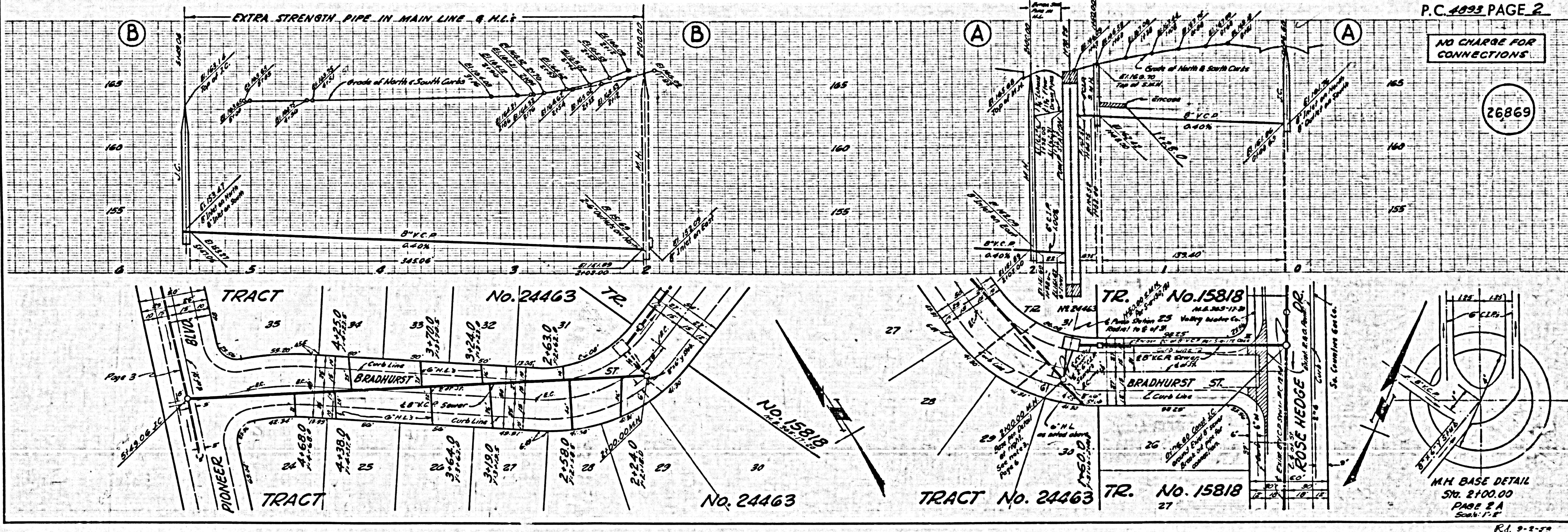
B.M. Fd. C. & B.C. West curb Norwalk Blvd.
 23' So. of curb return of N.W. corner
 Reichling Lane & Norwalk Blvd.
 S.Y. 3235 ELEV. 167.956 1955

- NOTES:
- PROVIDE STAKES ON THE PROPERTY LINE OR PROPERTY LINES PRODUCED AT RIGHT ANGLES TO THE SEWER LINE AT THE CENTER LINE OF EACH MANHOLE.
 - NO REPRESENTATIVE OF THE COUNTY ENGINEER WILL SURVEY OR LAYOUT ANY PORTION OF THE WORK.
 - THE OWNER OR HIS AUTHORIZED REPRESENTATIVE SHALL FURNISH THE COUNTY ENGINEER WITH GRADE SHEETS AND STATIONING FOR ALL HOUSE LATERALS AND Y BRANCHES AND SHALL PROVIDE STAKES FOR THESE AT THEIR PROPER LOCATIONS WITH STATIONING PLAINLY MARKED. ANY CHANGE IN LOCATION SHALL BE REQUESTED BY WRITING TO THE OWNER OR HIS REPRESENTATIVE.
 - NO REVISIONS SHALL BE MADE IN THESE PLANS WITHOUT THE APPROVAL OF THE COUNTY ENGINEER.
 - USE STANDARD MANHOLE FRAMES AND COVERS, S-A-117, EXCEPT AS NOTED.
 - USE STANDARD MANHOLE PIPE EXCEPT AS NOTED.
 - USE CHIMNEY ROOSTER, OR "WIND-LOCK," 36" DIA. FOR ALL HYDROPS CLAY PIPE ROOSTERS AND SPEC. 212 IN S-A-42.
 - RESURFACE ALL TRENCHES WITHIN PAVED AREAS TO MEET L. A. COUNTY ROAD DEPT., OR CALIF. STATE HIGHWAY DEPT. SPECIFICATIONS BY ACCORDANCE WITH FORMS.
 - ENCASE POLE RUNS OF SEWER AT POINTS OF INTERFERENCE WITH POLES, CASE 27, P-6-156.
 - HOUSE LATERALS TO BE CONSTRUCTED WITH JOISTS AT PROPERTY LINE. DO NOT SHOW CURB GRADE EXCEPT AS NOTED.
 - ALL STRUCTURES SHALL BE BUILT IN ACCORDANCE WITH SPECIFICATIONS, S-A-104, EXCEPT AS NOTED.
 - FOR ALLOWABLE MANHOLE TEST USE FORMULA NO. 1, SPEC. 212, INC. 24.
 - MANHOLE TOPS IN UNIMPROVED AREAS TO BE 6" ABOVE FINISHED GRADE.
 - THE PRIVATE ENGINEER SHALL FURNISH THE HOUSE DEPTH AT THE PROPERTY LINE BELOW THE TOP OF CURB ELEVATION FOR EACH HOUSE LATERAL ON THE GRADE SHEET.
 - THE CONTRACTOR SHALL NOTIFY THE CONSTRUCTION & STORM DRAIN DIVISION BY TELEPHONE, 483-4747, EXT. 362, AT LEAST 24 HOURS BEFORE STARTING ANY WORK UNDER THIS CONTRACT.

NOTE:
 GRADES TO WHICH THIS IMPROVEMENT IS TO BE CONSTRUCTED ARE SHOWN ON PLANS AND PROFILE GRADE POINTS FOR TOP OF CURB, CENTER LINE OF STREETS, OR CENTER LINE OF ALLEYS ARE SHOWN BY CIRCLES ON PROFILES. AT ALL POINTS BETWEEN DESIGNATED POINTS THE GRADE SHALL BE ESTABLISHED SO AS TO CONFORM TO A STRAIGHT LINE DRAWN BETWEEN SAID DESIGNATED POINTS.
 ELEVATIONS ARE IN FEET ABOVE U.S.C. & G.S. MEAN SEA LEVEL, DATUM OF 1929.
 THIS DRAWING AND THE DATA HEREON ARE HEREBY MADE A PART OF THE SPECIFICATIONS.
 BEFORE WORK CAN BE STARTED, THE CONTRACTOR MUST OBTAIN A PERMIT TO EXCAVATE IN COUNTY STREETS AND SHALL BE PROSECUTED ONLY IN THE PRESENCE OF THE COUNTY ENGINEER.
 BEFORE WORK CAN BE STARTED, THE CONTRACTOR MUST OBTAIN A PERMIT TO EXCAVATE IN COUNTY STREETS FROM THE L. A. COUNTY ROAD DEPT., 5077 AVENUE 42, AND MAKE A REPORT WITH THE COUNTY ENGINEER, ROOM 224 PAM AMERICAN BUILDING, 215 SO. BROADWAY SUPPLEMENT TO COVER THE COST OF CONSTRUCTION INSPECTION AND RECORD PLANS.
 APPROVAL OF THIS PLAN BY THE COUNTY OF LOS ANGELES DOES NOT CONSTITUTE A REPRESENTATION AS TO THE ACCURACY OF THE LOCATION OF OR THE EXISTENCE OR NON-EXISTENCE OF ANY UNDERGROUND UTILITY PIPE OR STRUCTURE WITHIN THE LIMITS OF THIS PROJECT. THIS NOTE APPLIES TO ALL PAGES.
 IF WORK IS TO BE DONE IN A STATE HIGHWAY, A PERMIT MUST BE OBTAINED FROM THE STATE OF CALIFORNIA, DIVISION OF HIGHWAYS, THE SOUTH SPRING STREET.

COUNTY OF LOS ANGELES, CALIFORNIA
 APPROVED, JOHN A. LAMBE, COUNTY ENGINEER
 APPROVED, A. M. RAWNS, CHIEF ENGINEER
 BY: *John A. Lamb* COUNTY ENGINEER BY: *A. M. Rawns* CHIEF ENGINEER
 CHECKED BY: *St. Clair* 11-5-50
 OFFICE OF COUNTY ENGINEER, REG. C. E. NO. 26868

NO CHARGE FOR CONNECTIONS
L. S. Ludlow 9-14-50

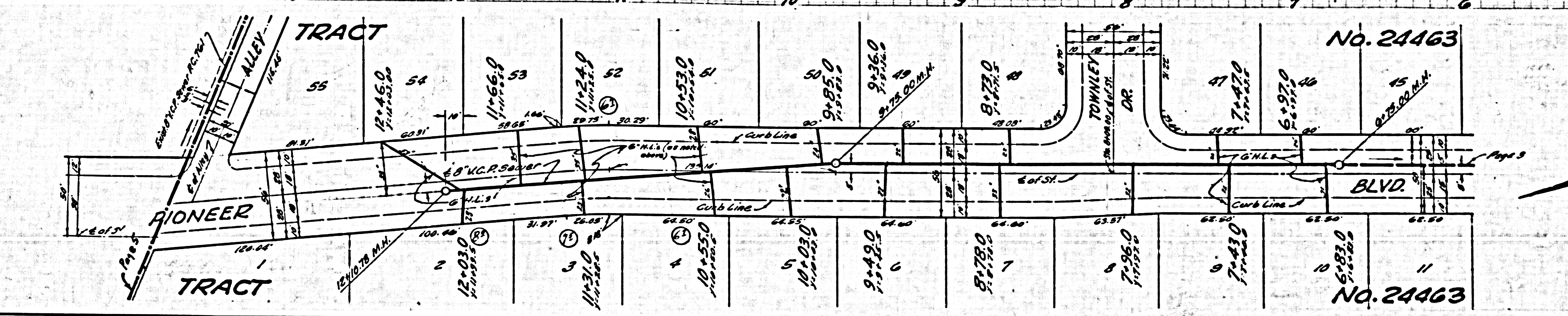
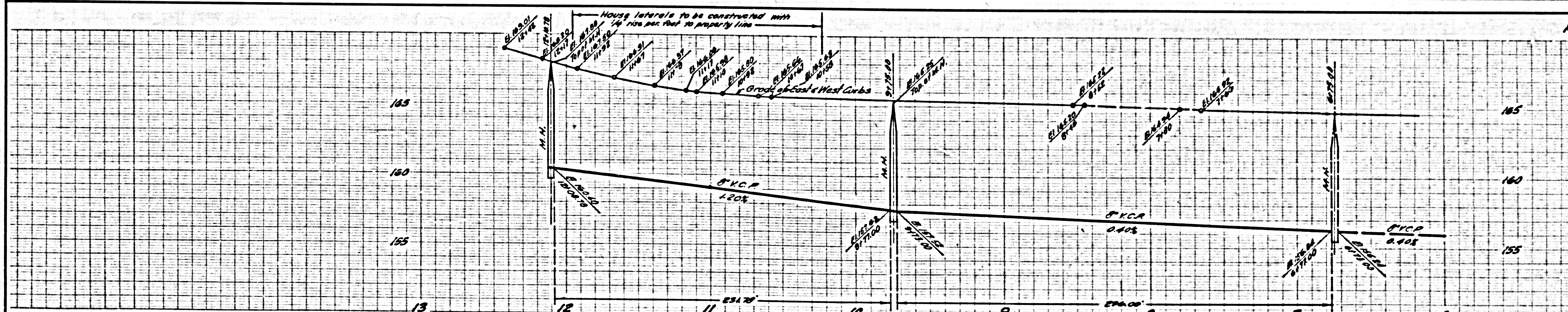
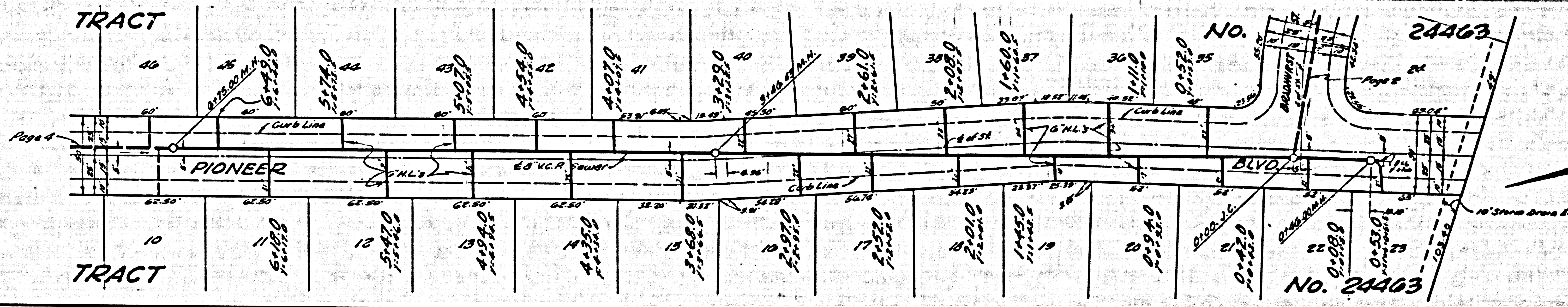
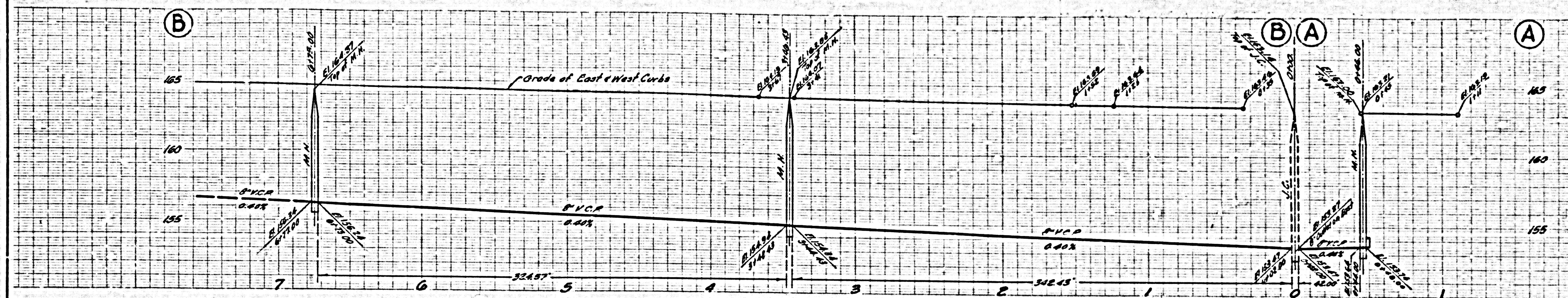


P.C. 4893 PAGE 2

NO CHARGE FOR CONNECTIONS

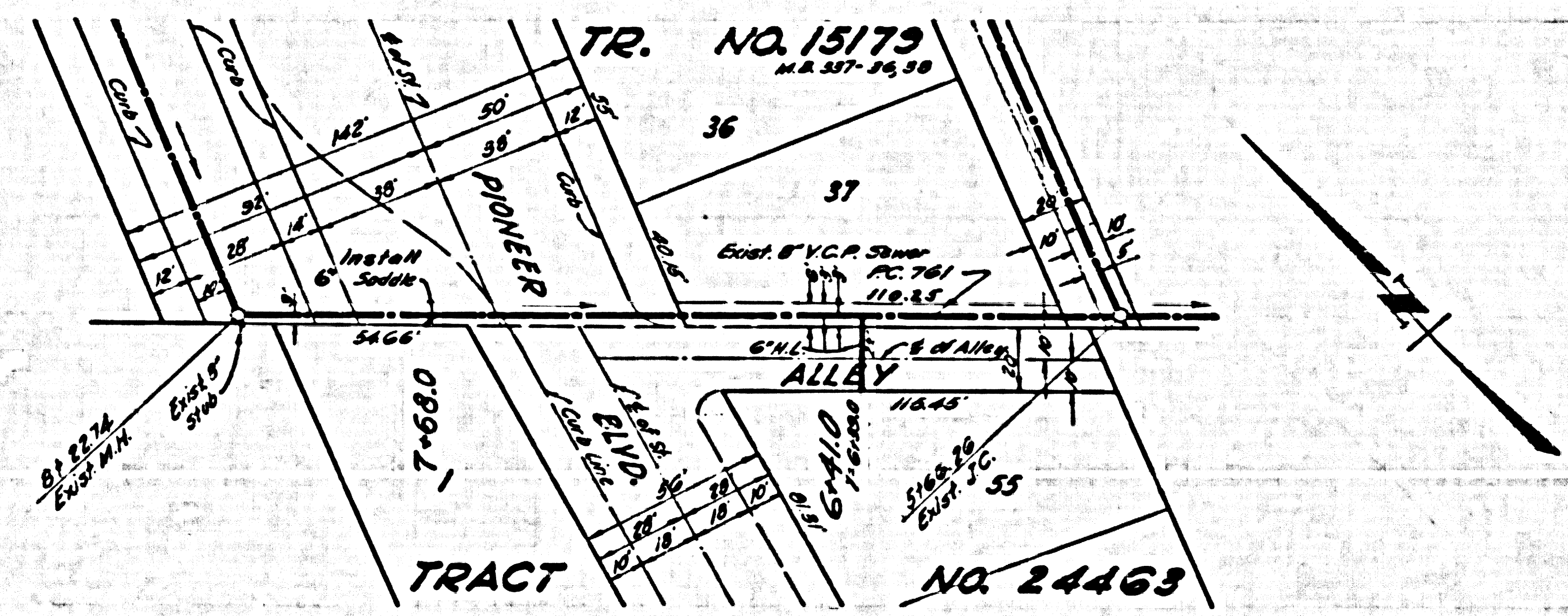
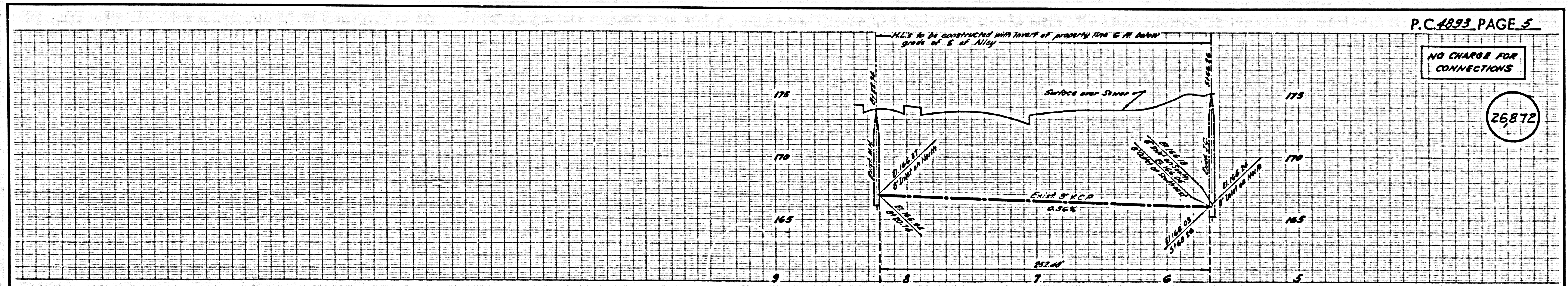
26868

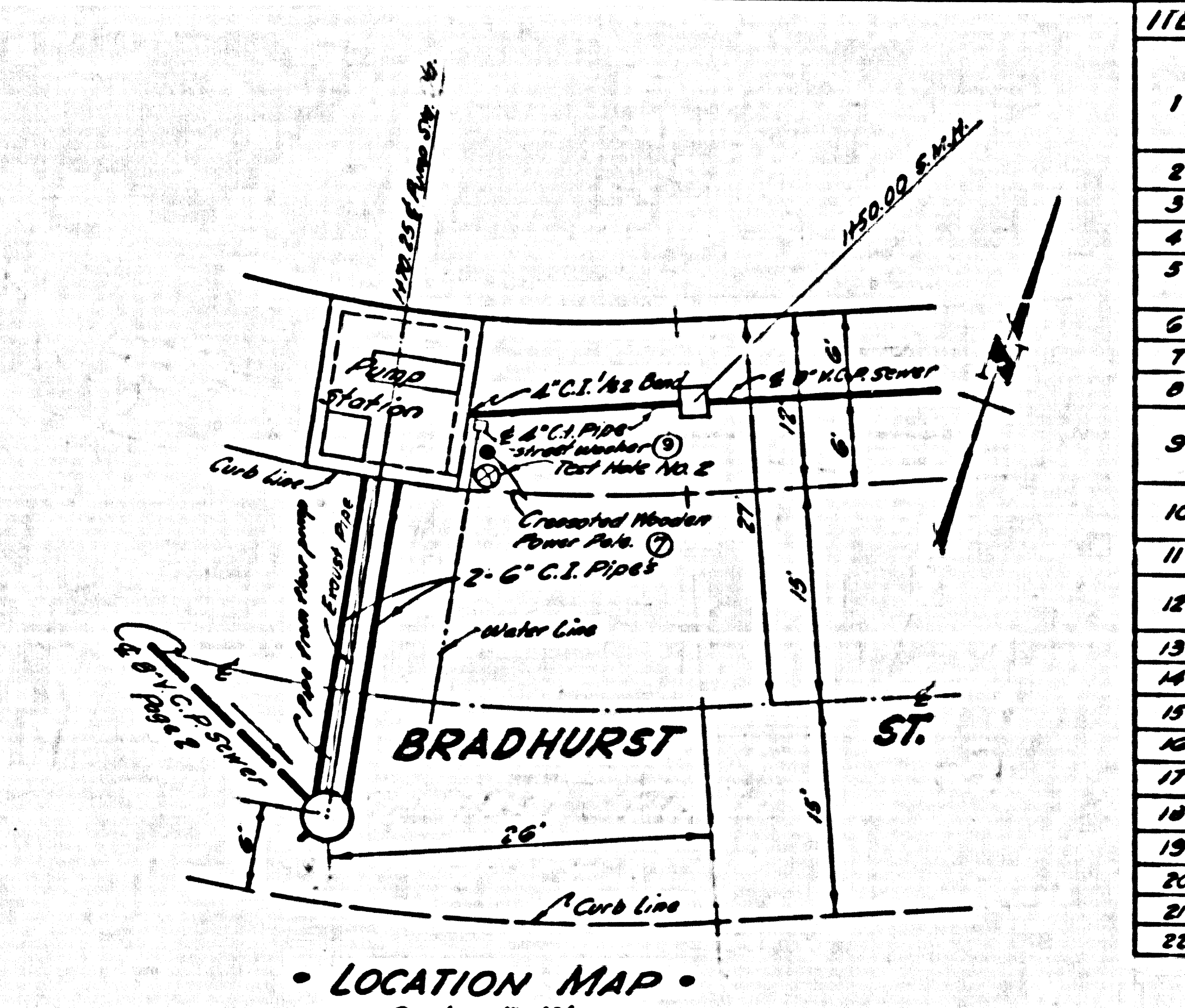
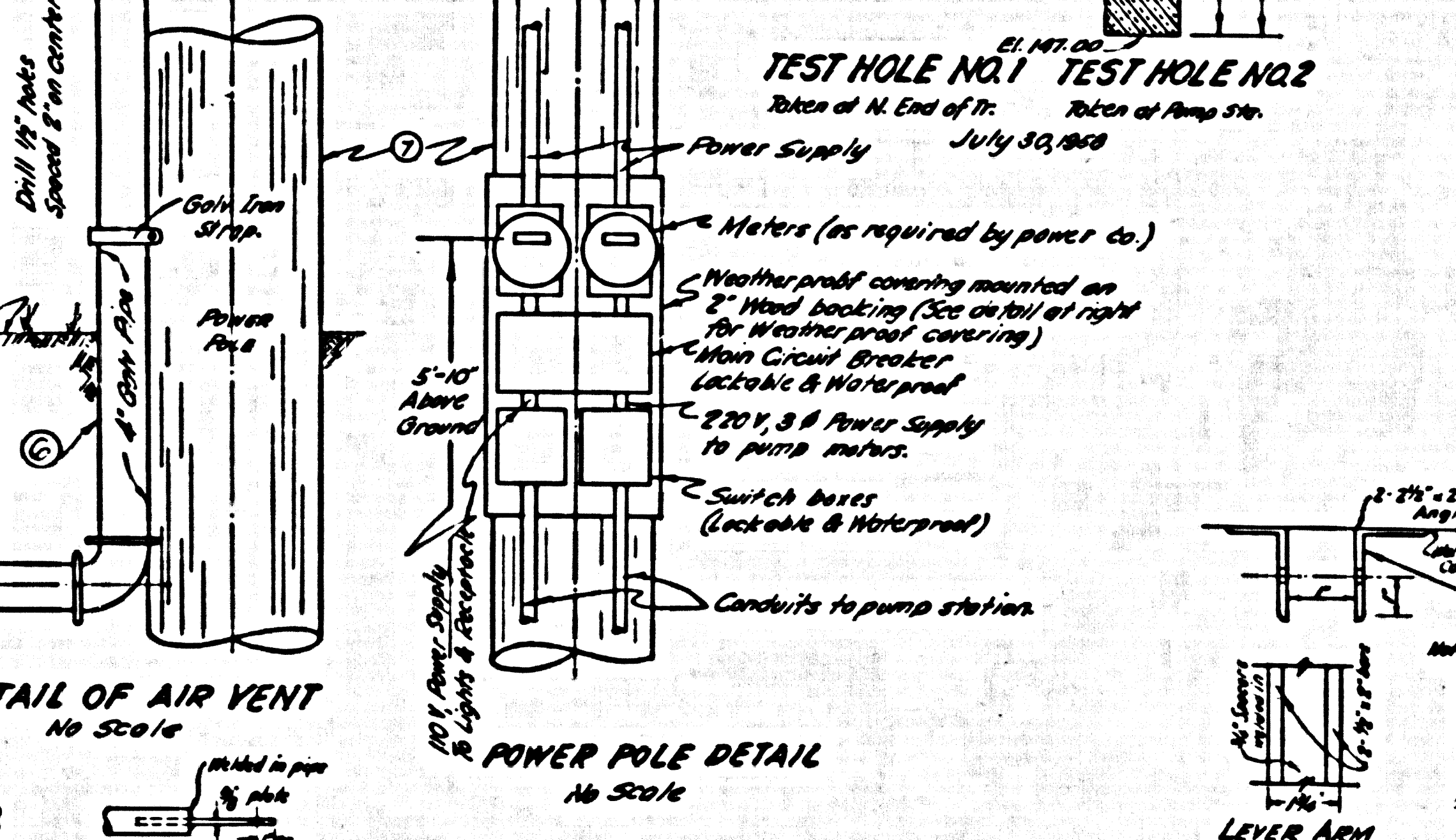
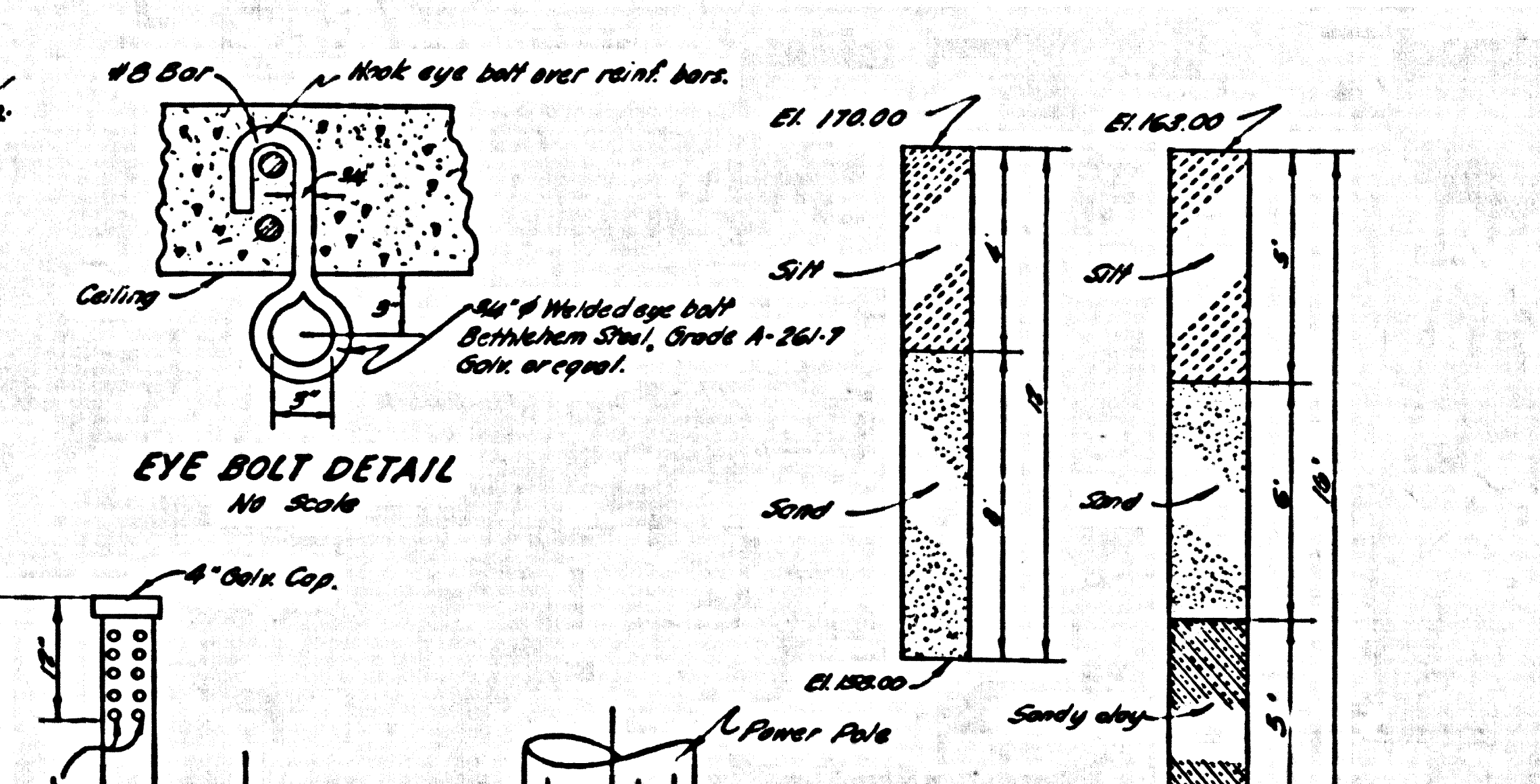
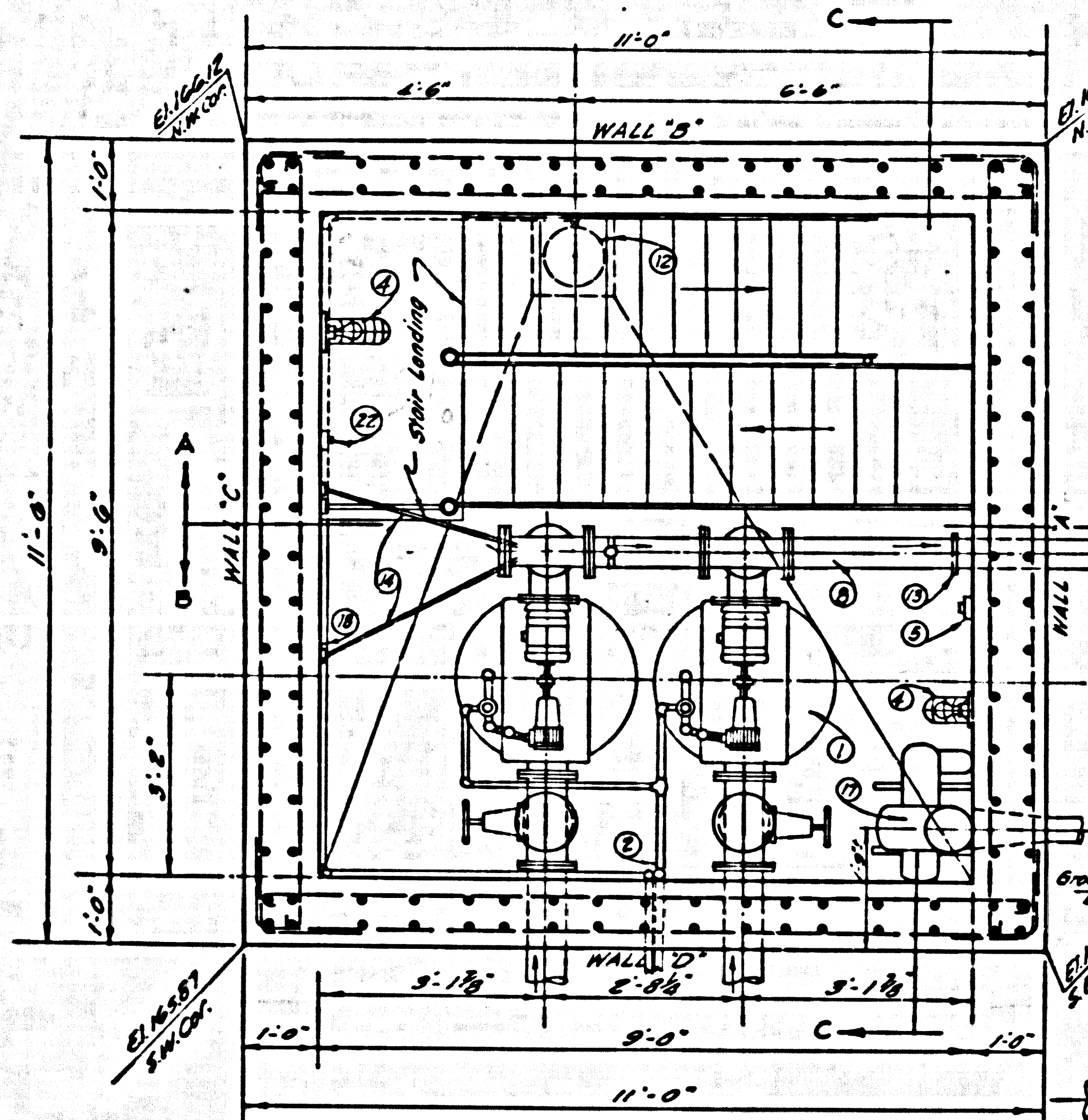
M.H. BASE DETAIL
 SLO. 2:100.00
 PAGE 2 A
 SCALE: 1"=8"



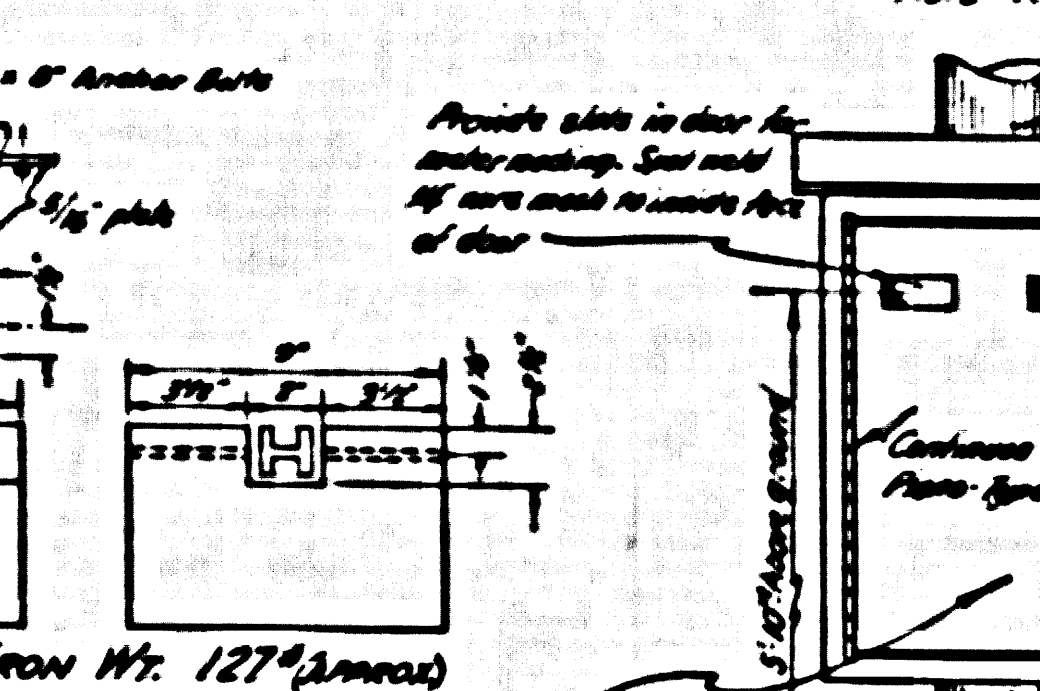
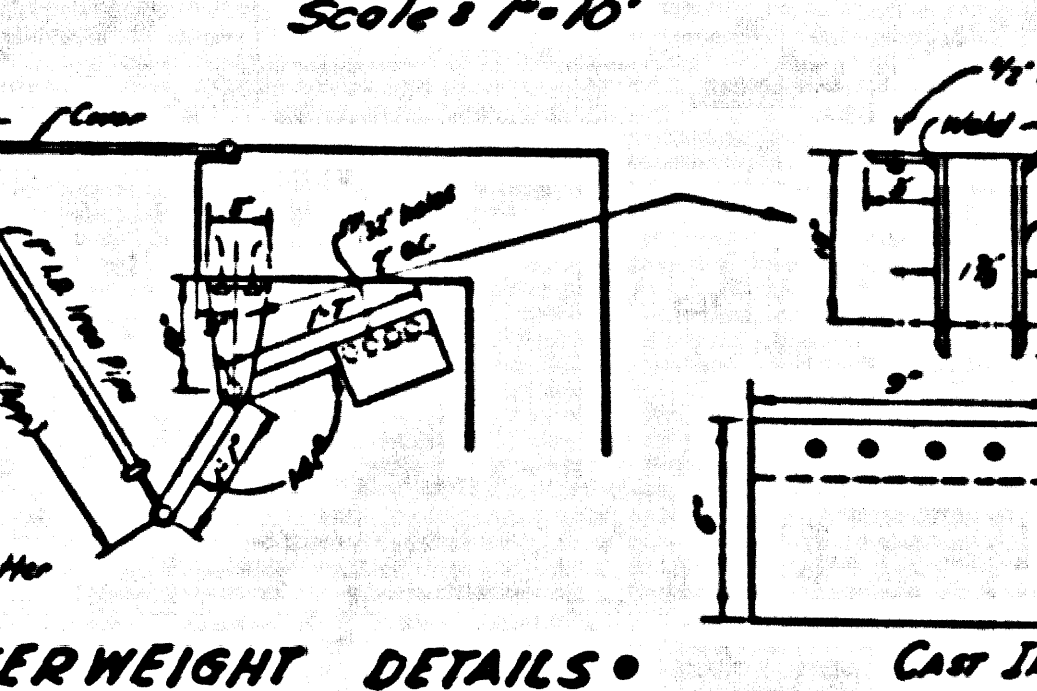
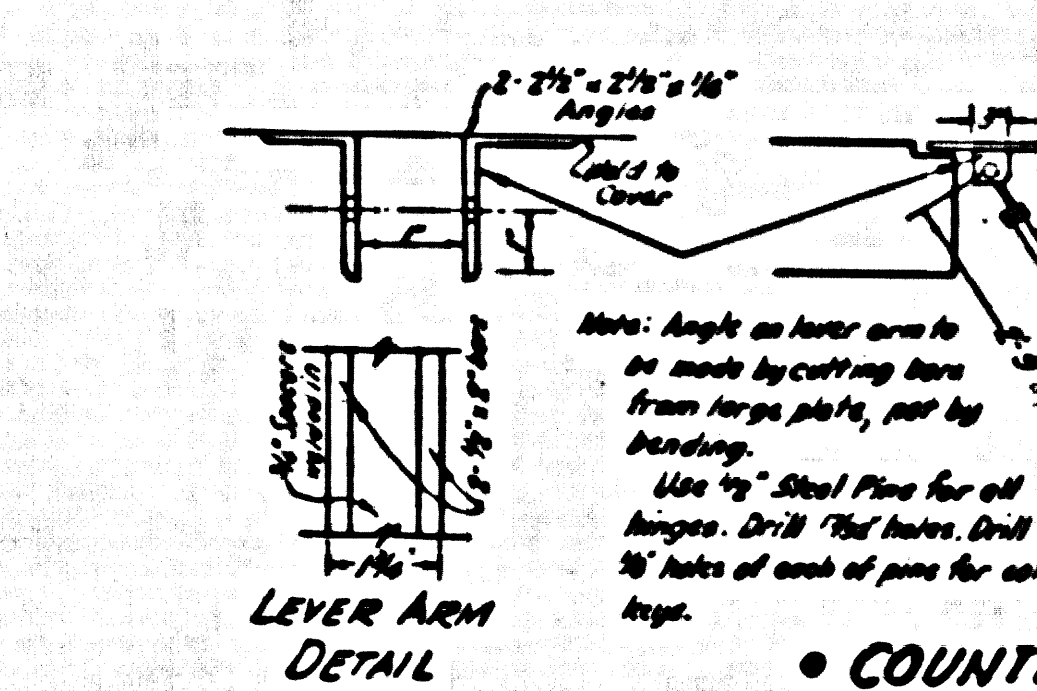
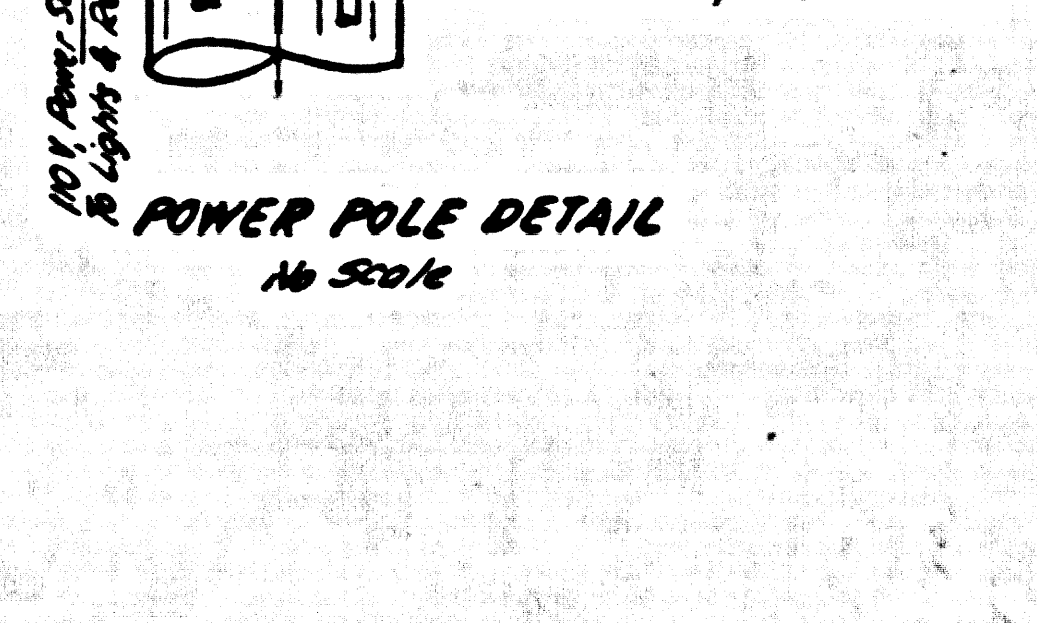
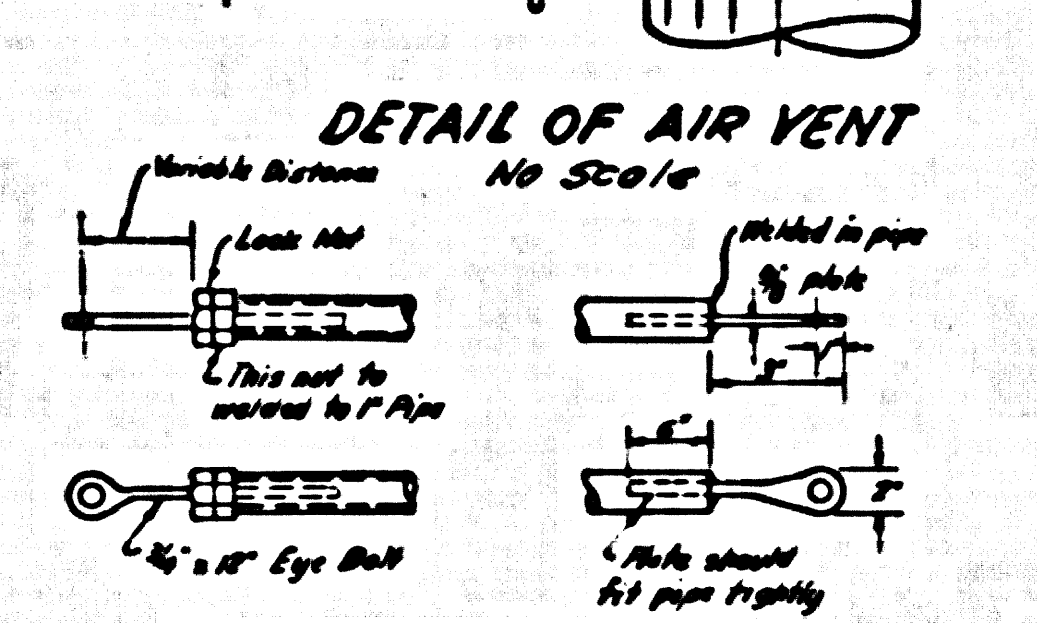
NO CHARGE FOR CONNECTIONS

26872

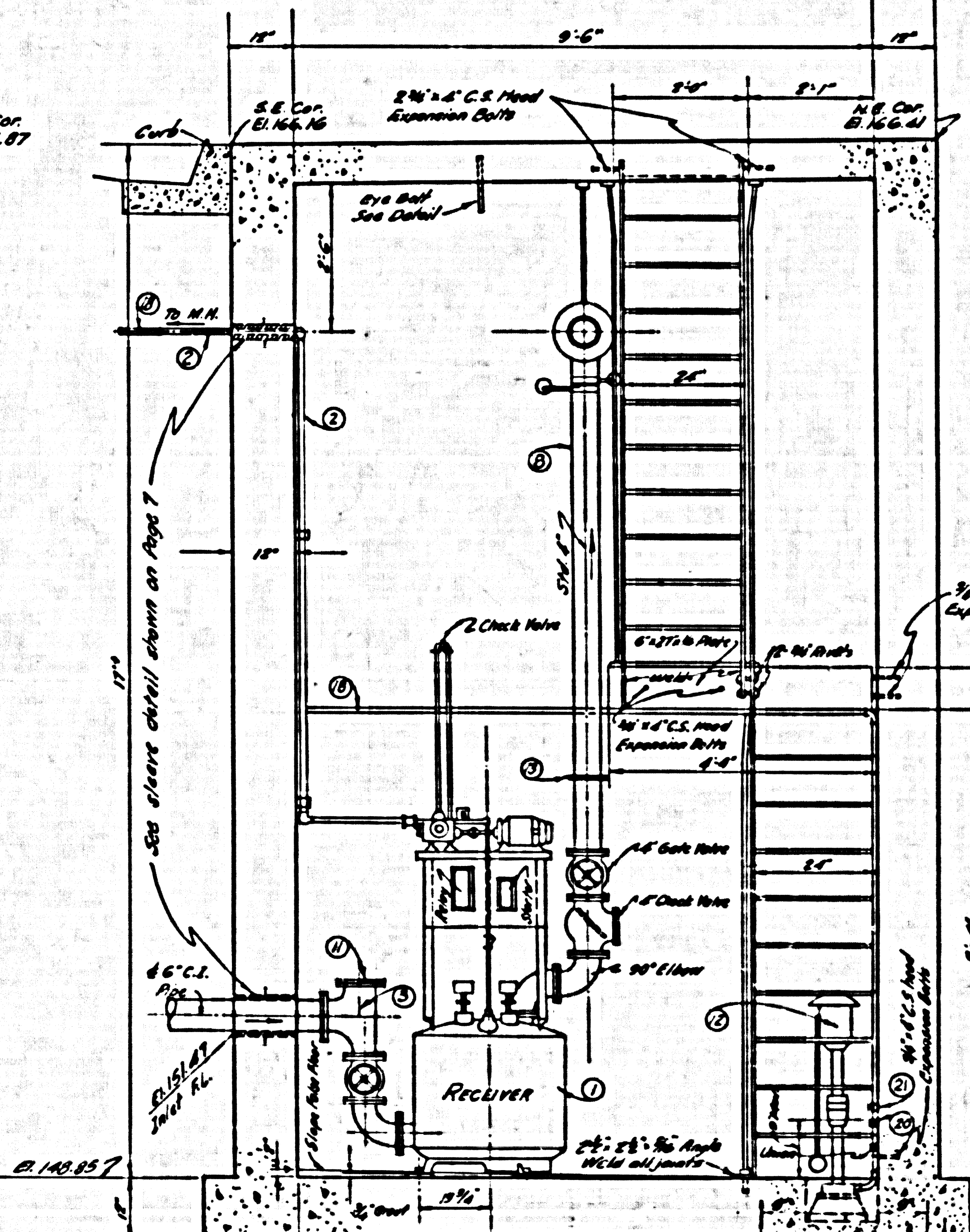
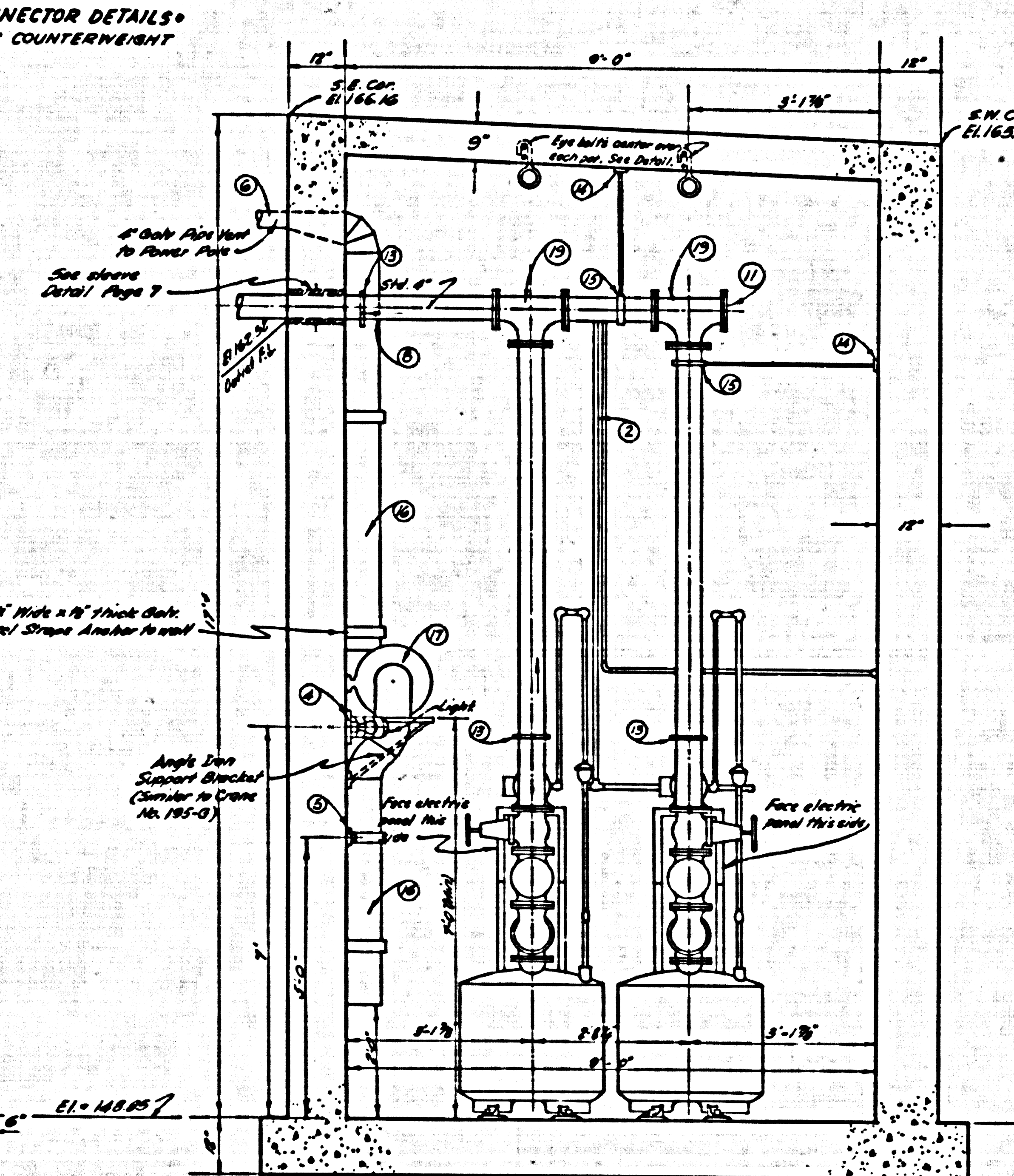
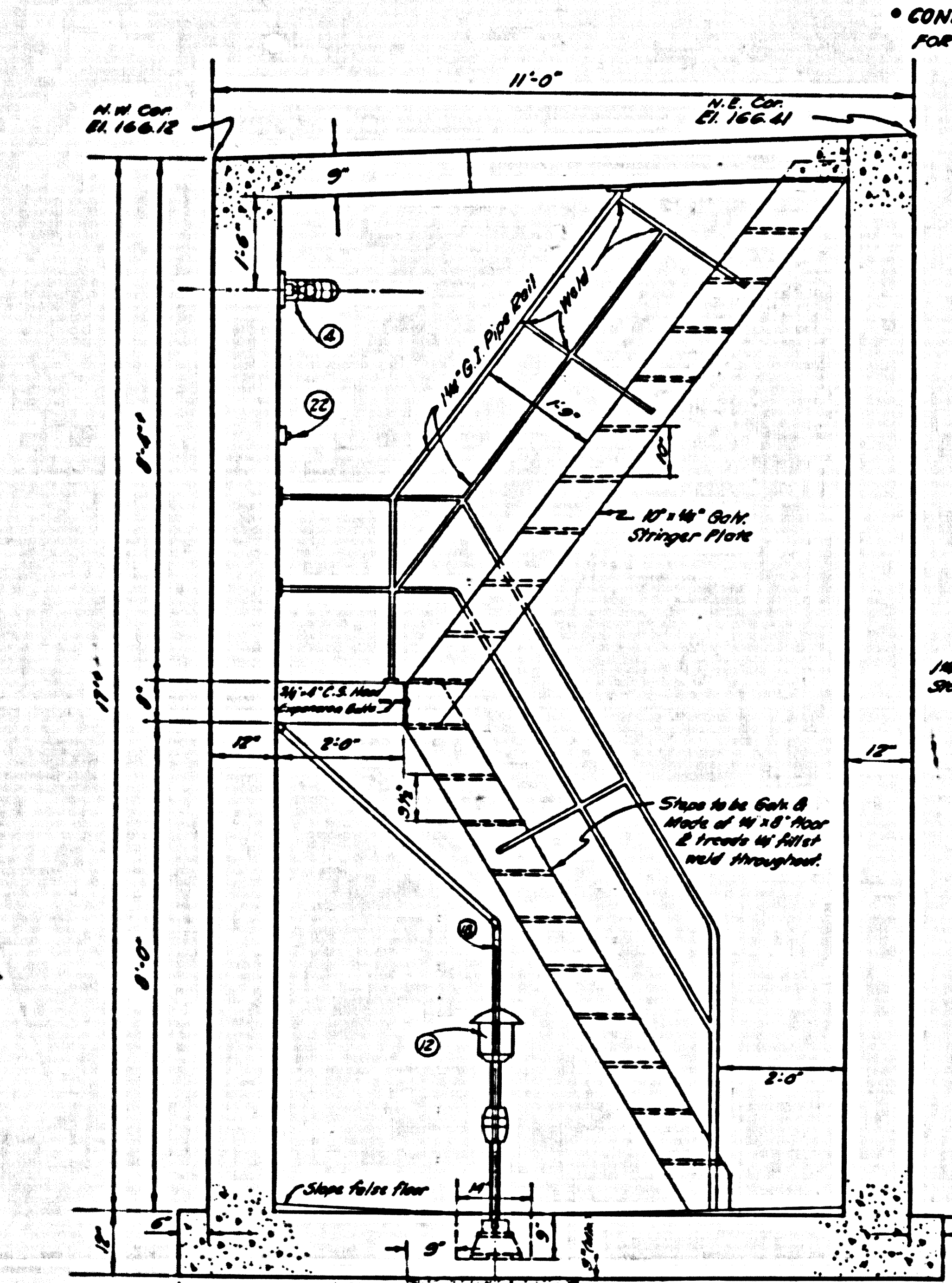




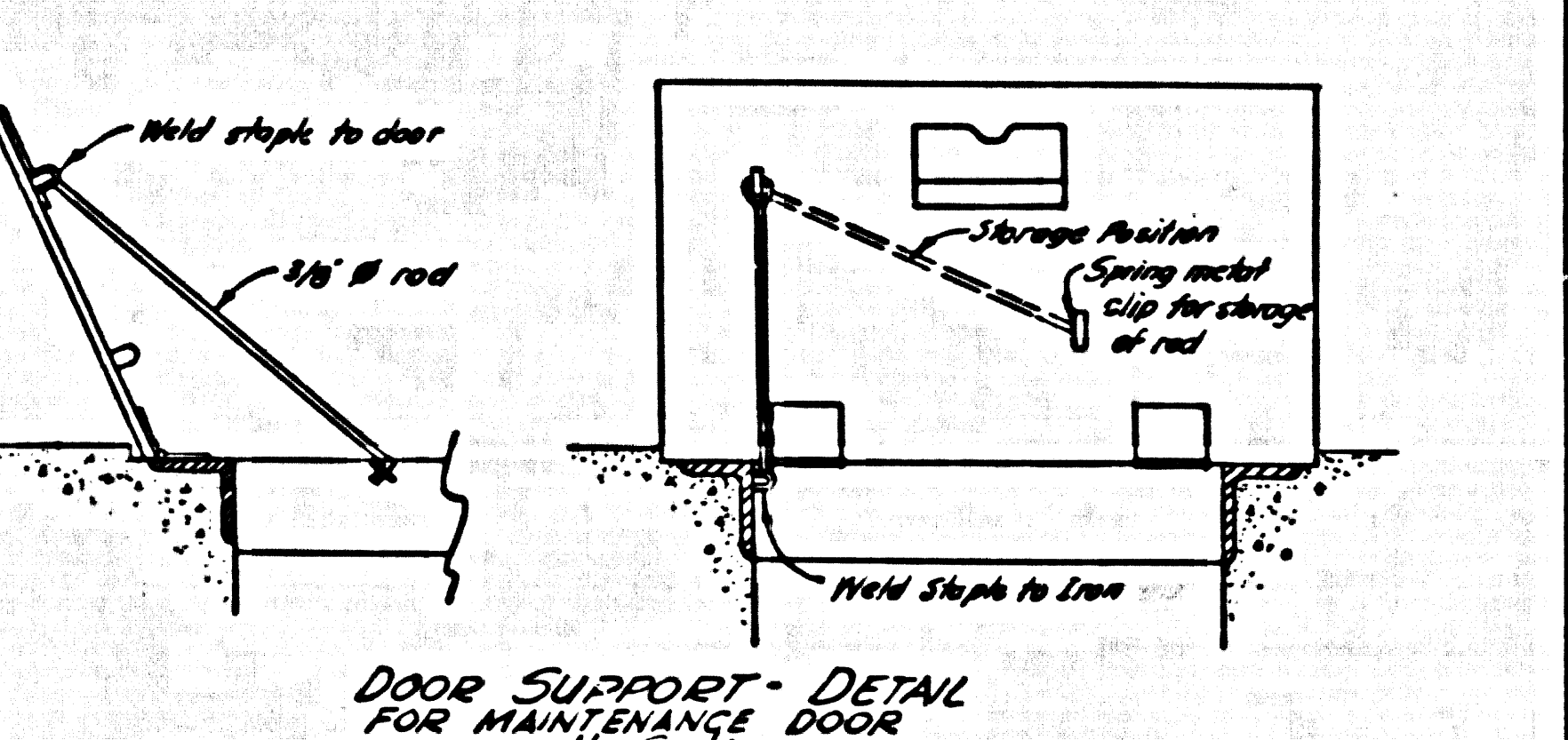
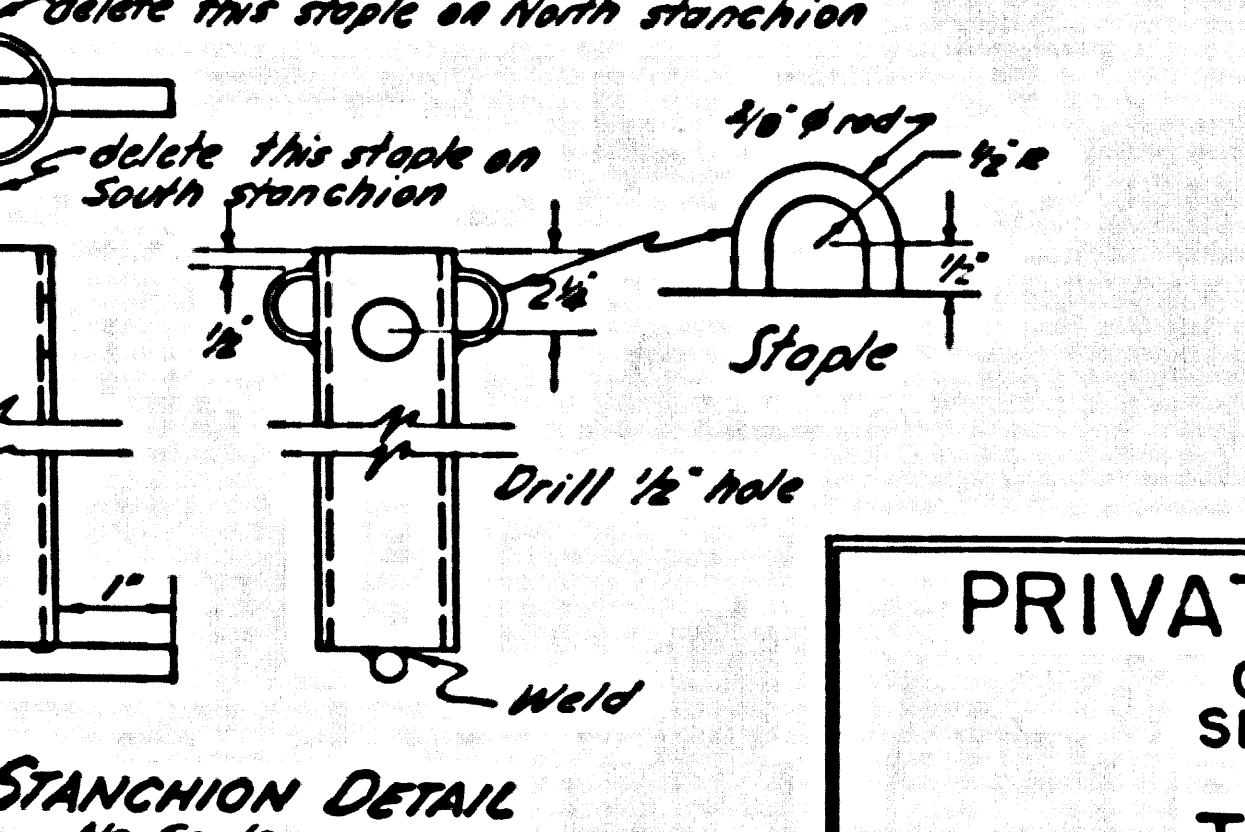
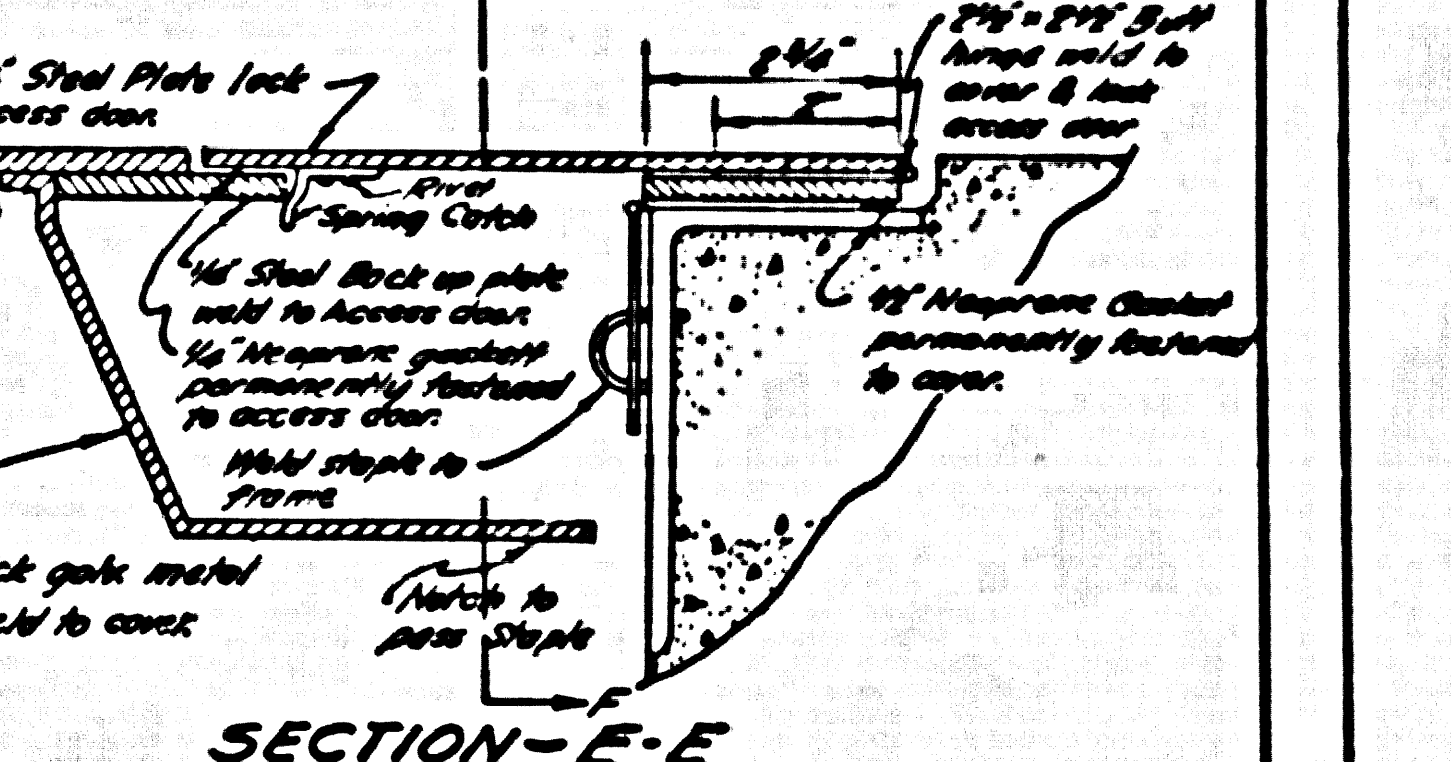
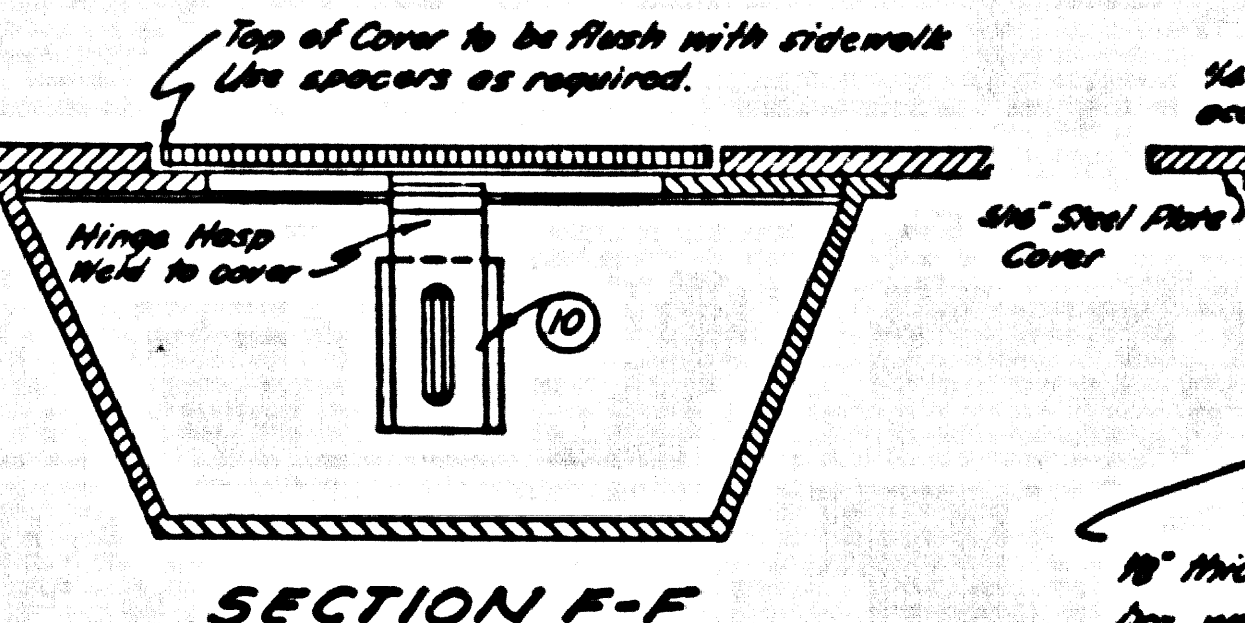
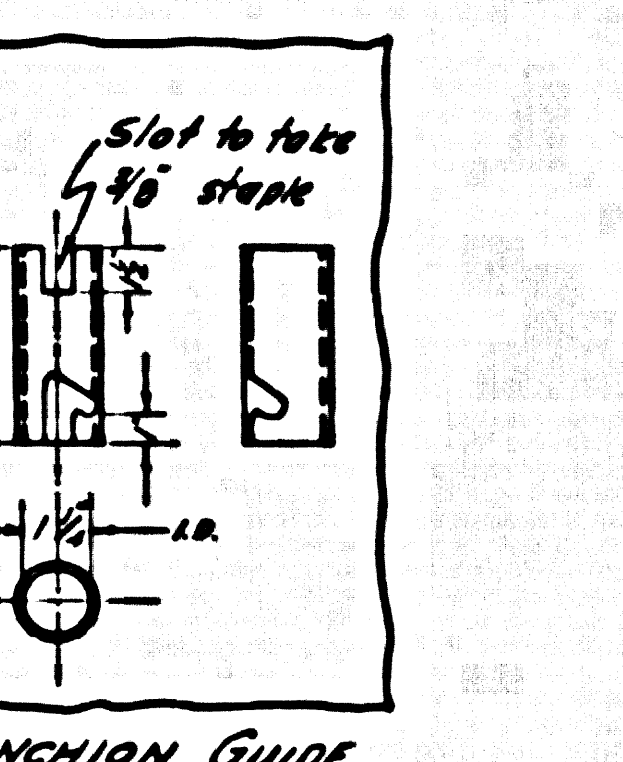
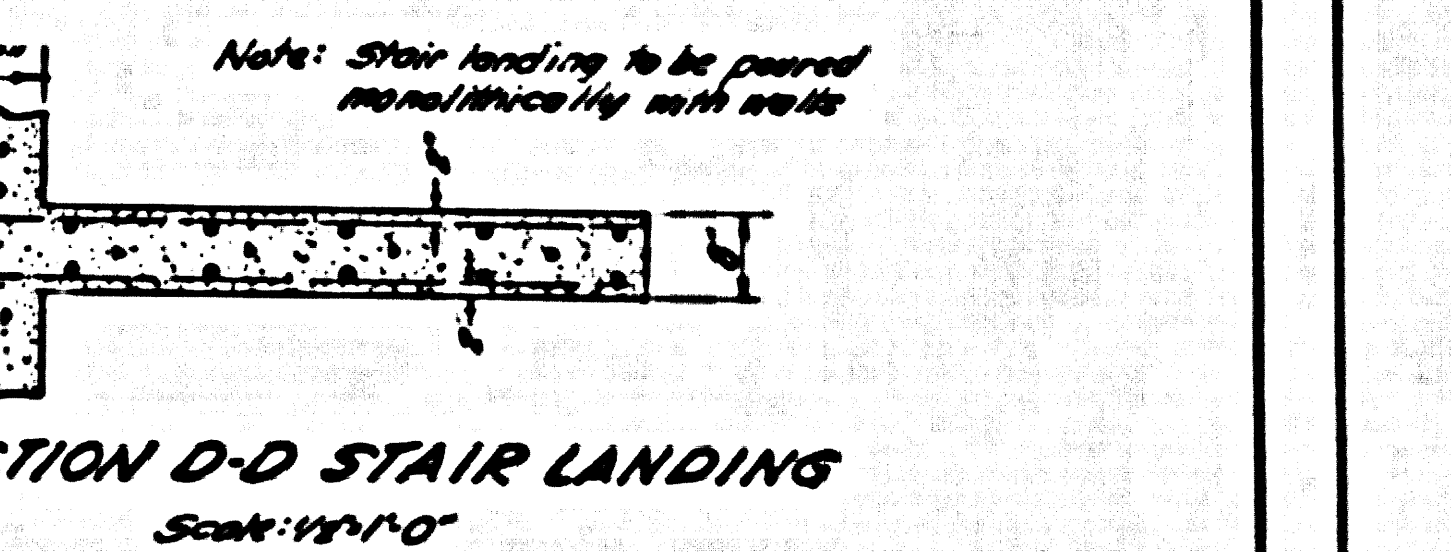
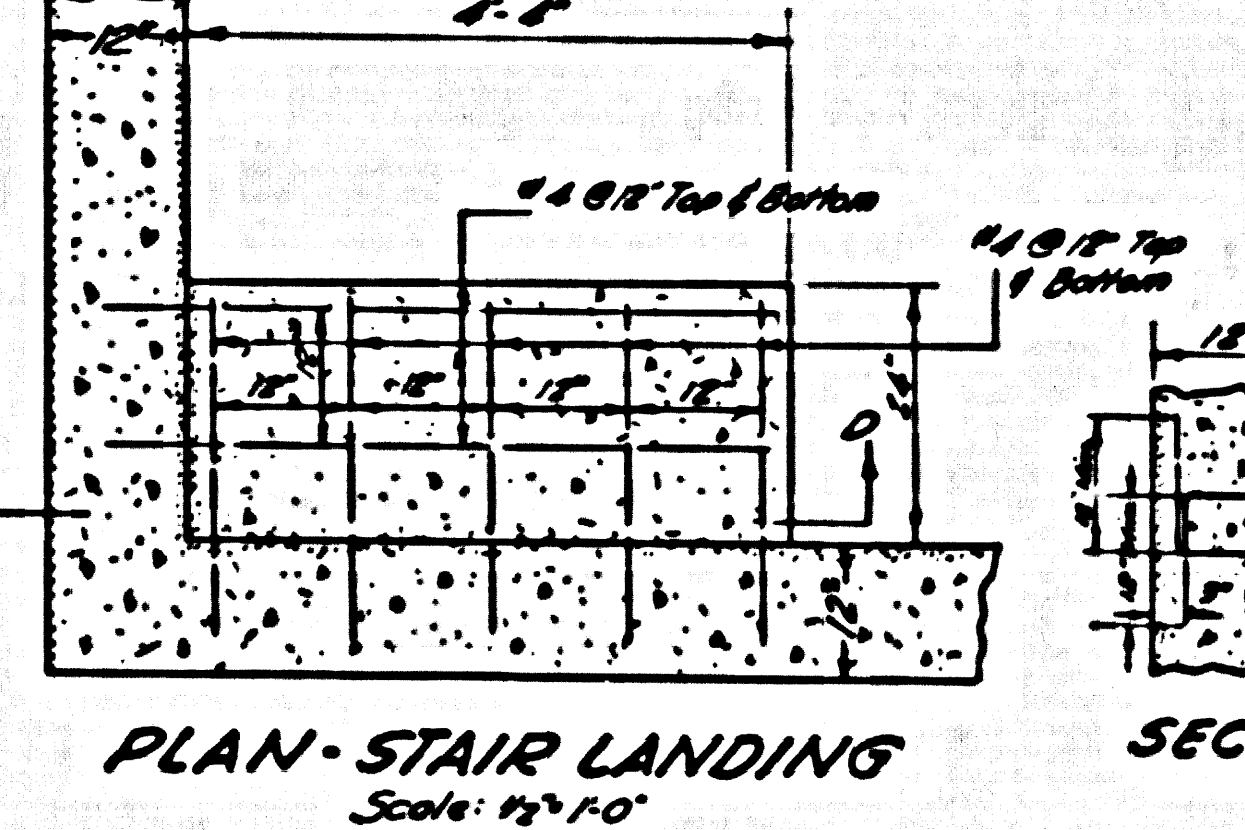
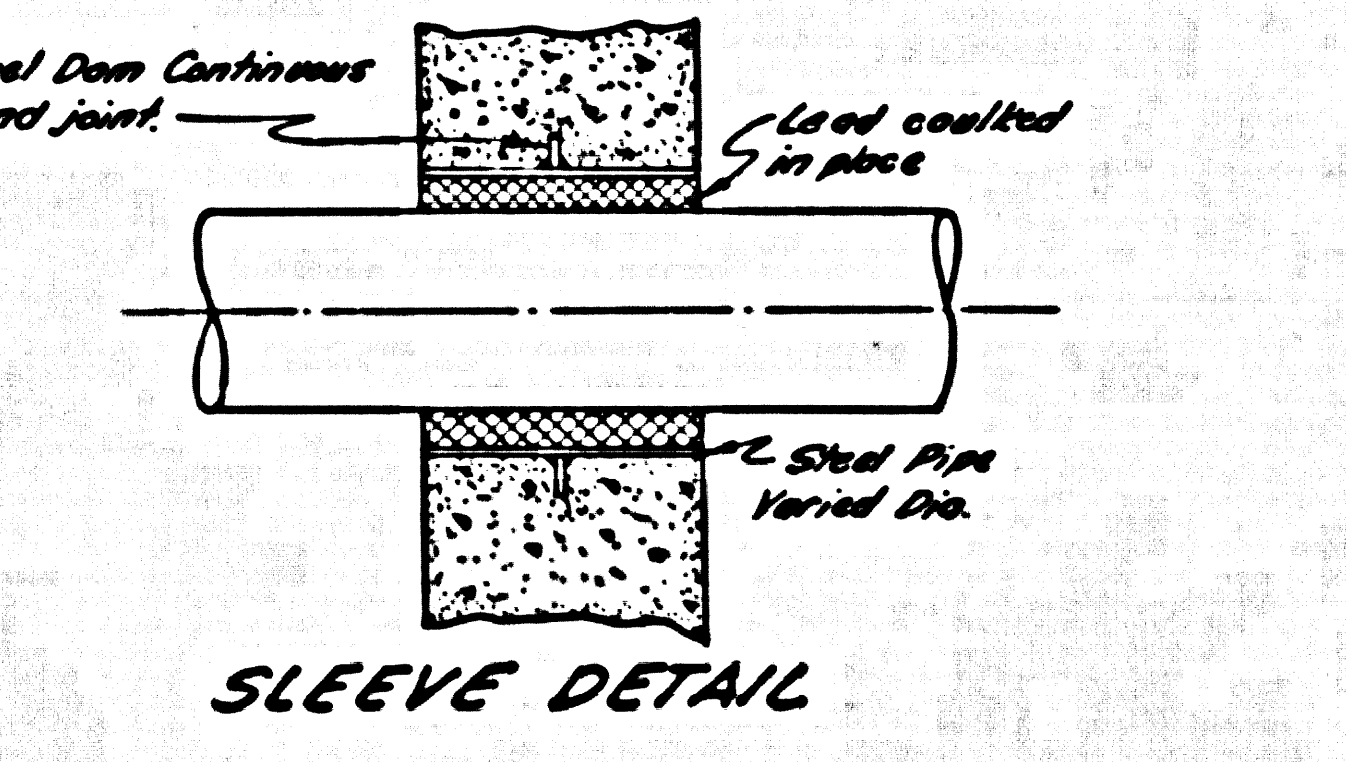
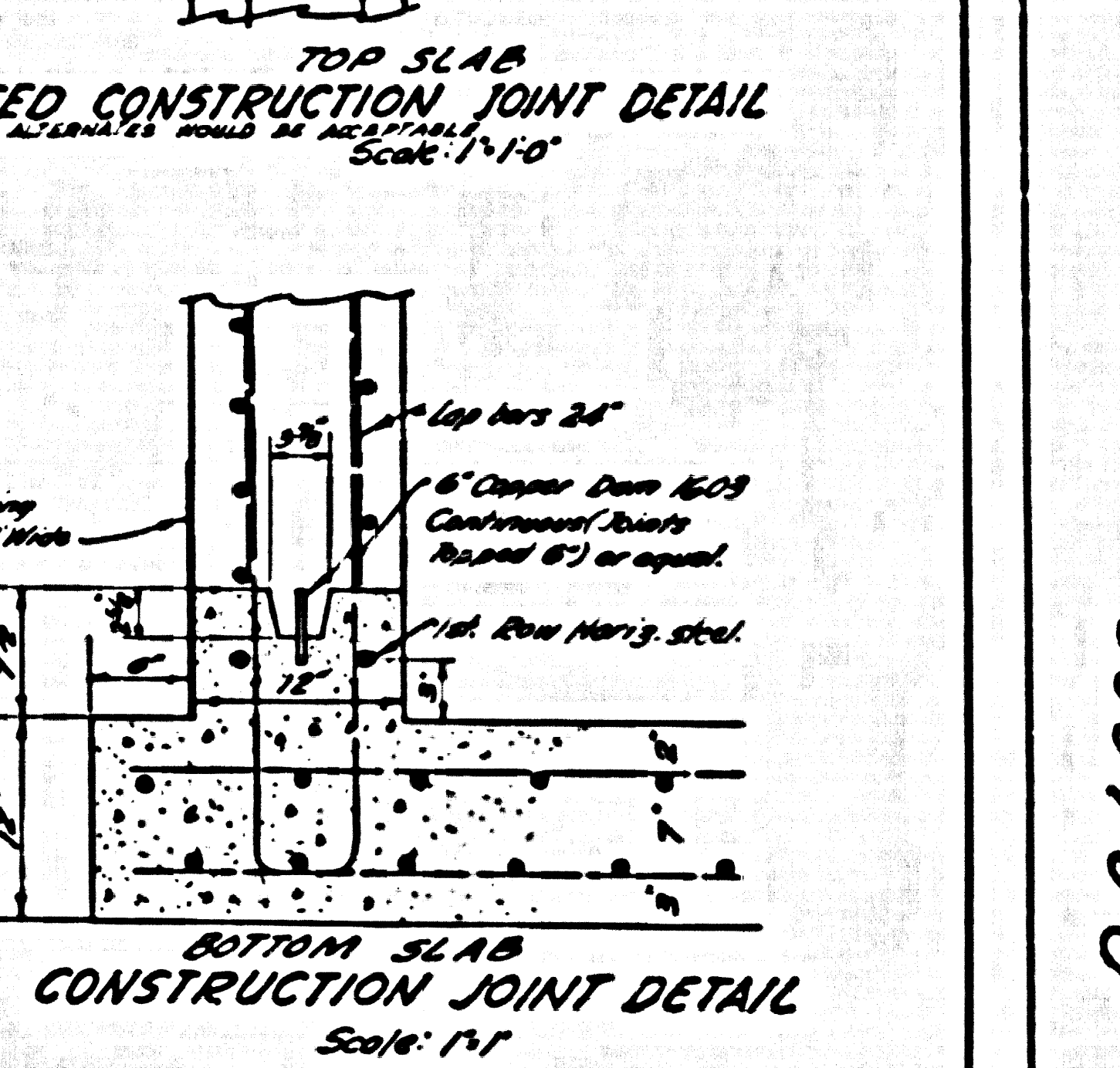
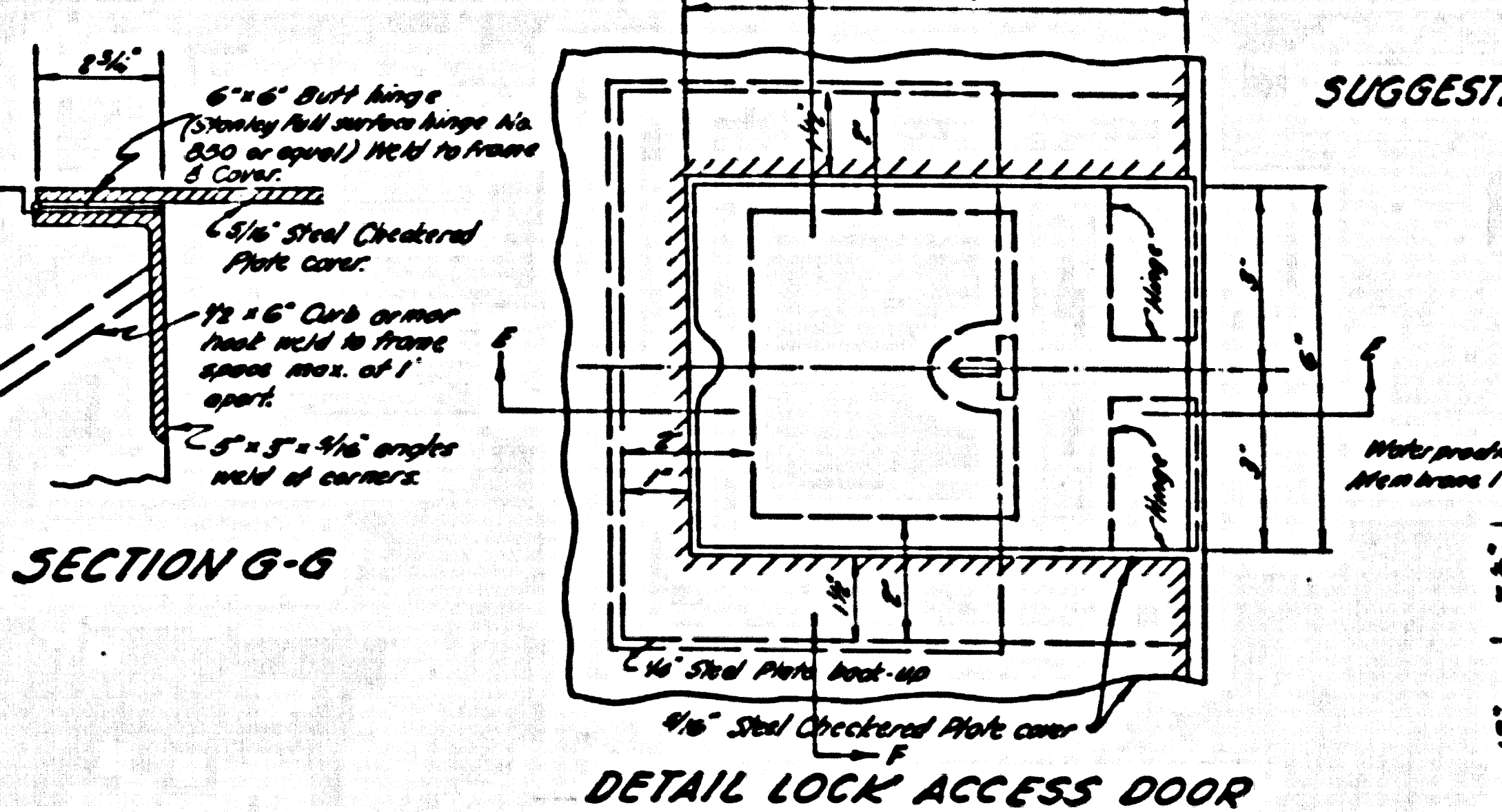
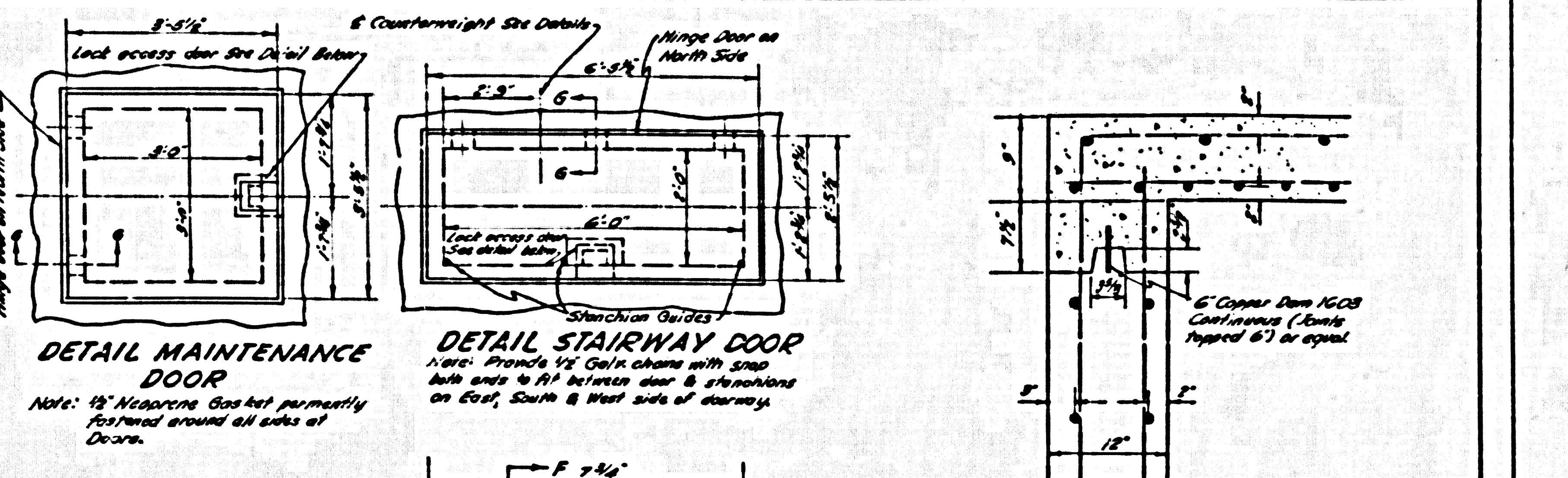
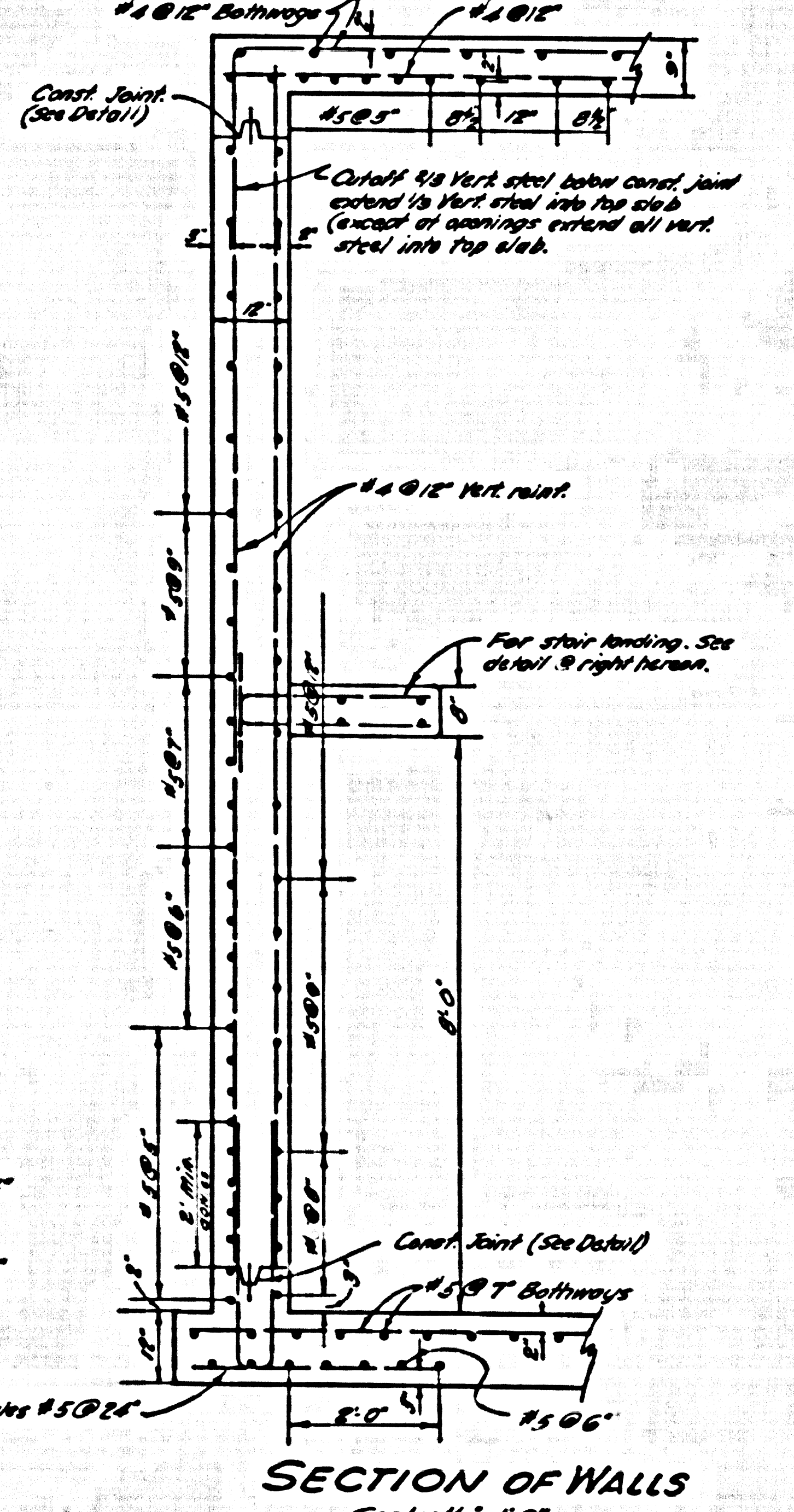
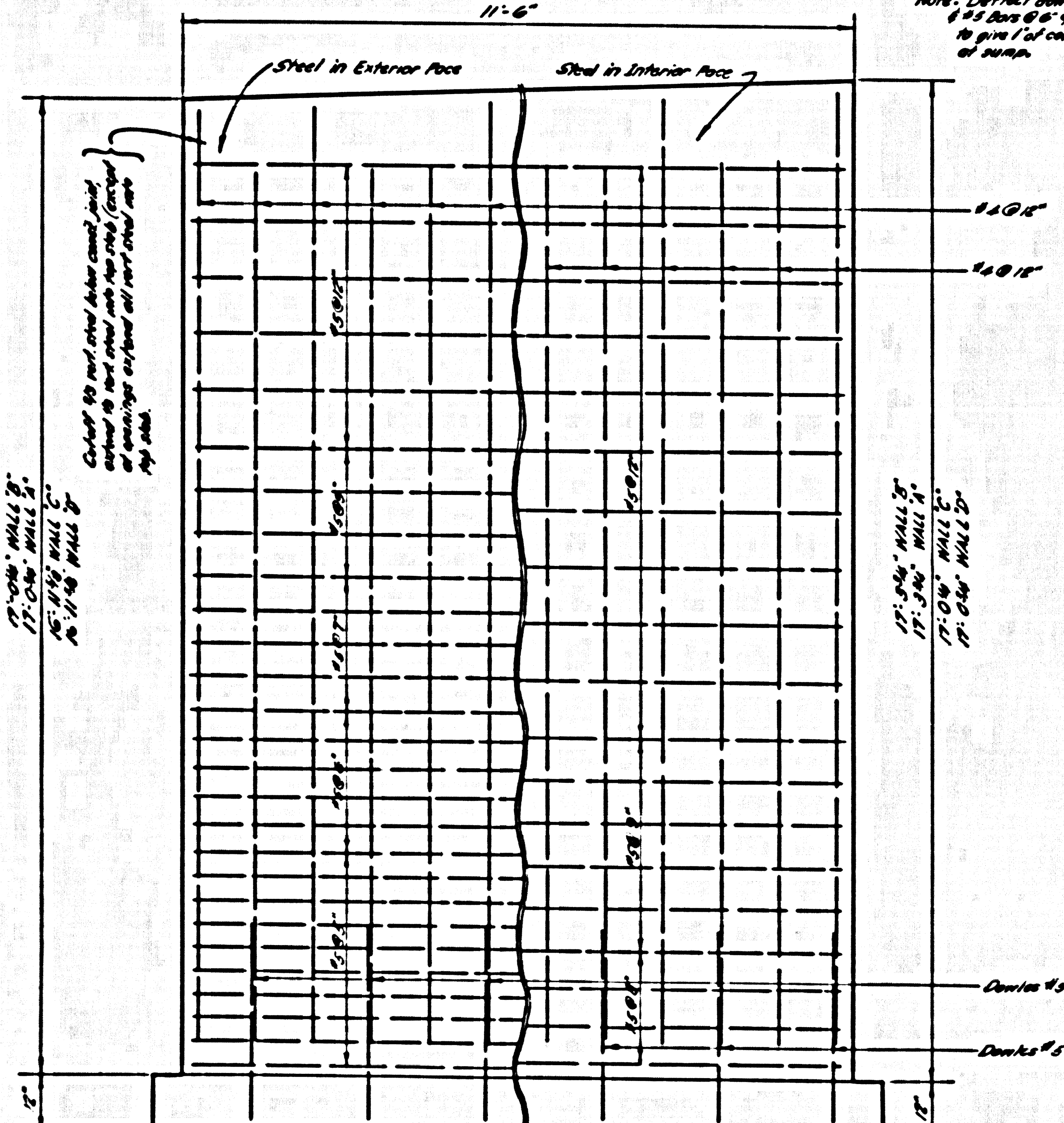
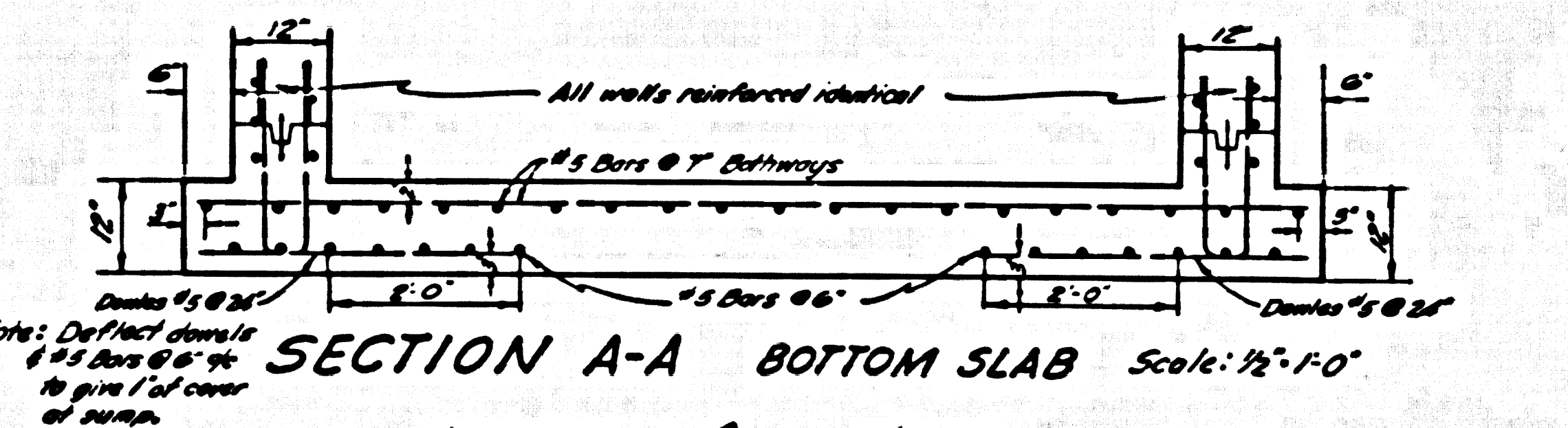
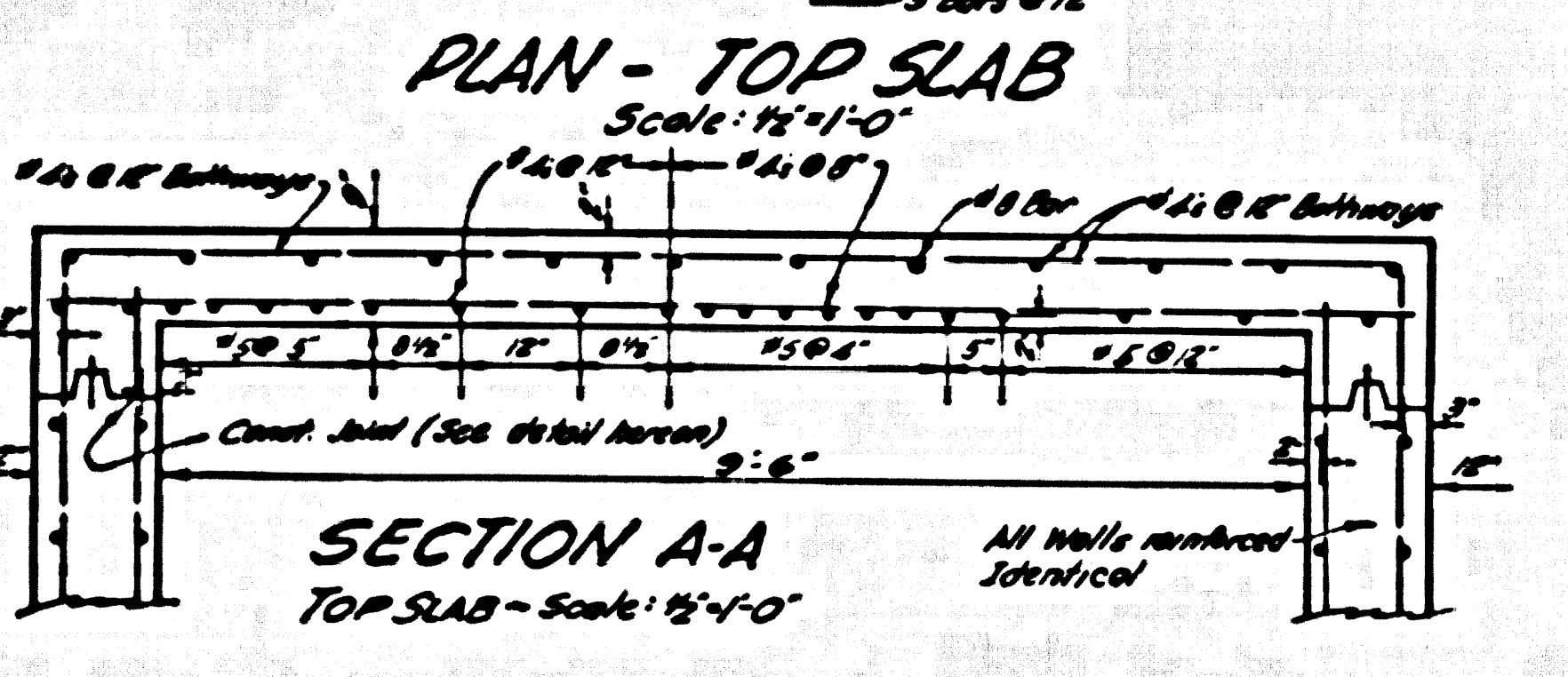
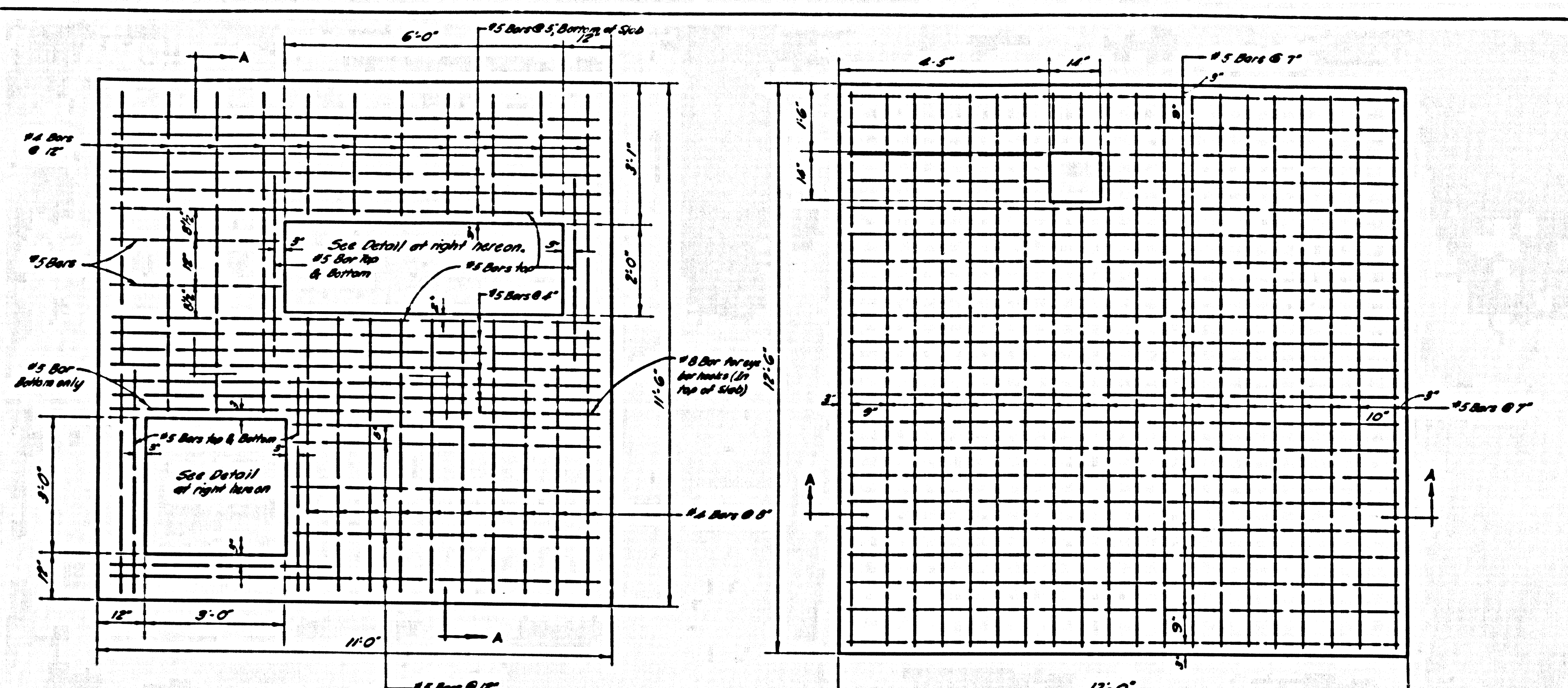
ITEM	QUANTITY	DESCRIPTION
1	2	50 Gal. capacity Pneumatic Ejector Electrically controlled, package type or equivalent, complete with receiver, automatic controls, with electric interlock, wires, air compressor and compressor motor or approved equal. Factory approved being desired.
2	38 in. Ft.	1 1/2" Galv. Iron Exhaust Pipe, 8 Ft. Mfgs.
3	2	6" x 6" x 4" Flangeless Tee, Cast-iron Iron Wts. (As 200) per 100 lbs.
4	2	200 Watt Waterproof Lighting Fixture Contain with guard, 4 1/2" x 4 1/2" x 3 1/2" or equal.
5	1	Interlocked Plug Receptacle & Switch Combination - Green Wires 150 C-230 or equal.
6	12 in. Ft.	4" Galv. Iron Pipe, 8 Ft. Mfgs.
7	25 in. Ft.	8" Cast-iron Wooding Pole.
8	28 in. Ft.	4" C.I. Pipe.
9	1	16" Special Brass Ground Street washer with concealed Armp, Allmetal Cast-iron Co. Size No. A-237-A or approved equal. Install with lockable cover.
10	2	Wings Nuts - 1/2" Wrought Steel, 2 1/2" No. 9H California Hardware Co. or equal.
11	3	6" Blind Flange
12	1	5 amp Pump (1/2 H.P., 1750 R.P.M., 1 P.H.A.; Exhaust Proof, Yeoman Drain Co. or equal, No. 2-2).
13	3	4" Victrolite Couplings
14	3	3/4" Galv. Split Ring & socket - Case No. 107, R. 6 or equal.
15	3	3/4" Galv. strong hanger Flange - Bolt to wall, Case 128-8 or equal.
16	13 1/2 in. Ft.	6" Transit Pipe
17	1	Buffalo Flange to Blower Port, 1/2 H.P. Exhaust Proof - 60 Cycle 110 V or equal.
18	45 in. Ft.	1 1/2" Galv. Iron Pipe (From floor drain)
19	2	6 x 6 x 6 Double angle iron
20	1	1 1/2" Check valve (Brass)
21	1	1 1/2" Galv. Valve (Brass)
22	1	Switch for blower & lights (Vocor-1 light)



- GENERAL NOTES**
1. Ultimate strength of concrete (28 days) 3000 p.s.i. min.
 2. Use intermediate grade of reinforcing bars (20,000 p.s.i.)
 3. 1 1/2" pipe from pump pump should have approx. 6" x 7" section of pipe within the manhole which would direct the flow in the 12" line down towards the base of the manhole.
 4. The contractor shall contact the Valley Water Co. to provide water service to the street washer.
 5. All cast iron pipe and fittings shall withstand 125 p.s.i. minimum working pressure.
 6. The contractor shall contact Southern California Edison Co. for power service.
 7. All overload protection for electrical equipment shall be provided through circuit breakers.
 8. If a pneumatic ejector other than the type specified should be installed, the contractor shall be responsible for seeing any necessary bolts, etc.
 9. Electrical conduit shall be underground from power pole to pump station.
 10. Ejectors shall be painted inside including in and out drop fixtures, with Epoxi-Bitumastic Plastic Paint or approved equal.
 11. If ground water is encountered a water proof membrane or coating shall be applied to the exterior of the structure. The membrane or coating shall extend 1' below the proposed water table.
 12. All pipes or conduits shall be securely fastened to walls with galv. iron pipe straps.
 13. Rigid electric conduit shall be embedded within the walls & floor of the structure. Conduit for ejectors to be brought to the ejectors through the floor.



PRIVATE CONTRACT No 4893
CONSTRUCTION PLANS FOR
SEWAGE PUMP STATION
TO SERVE
TRACT No 24463
PAGE 6 OF 5 SHEETS
SCALE 1/2" = 1'-0" EXCEPT AS NOTED AUGUST 1958
COUNTY OF LOS ANGELES
JOHN A. LAMBIE COUNTY ENGINEER
PREPARED IN THE OFFICES
OF
KEMMERER ENGINEERING CO. INC.
APPROVED BY *[Signature]* SANITATION ENGINEER
APPROVED CHIEF ENGINEER OF CO. SAN. DIST. NO 13
BY *[Signature]* OFFICE ENGINEER
CHECKED BY *[Signature]* 11-5-58
OFFICE OF COUNTY ENGINEER R.E. 546L



PRIVATE CONTRACT N^o 4893
CONSTRUCTION PLANS FOR
SEWAGE PUMP STATION
TO SERVE
TRACT NO. 24463
PAGE 7 OF 8 SHEETS
SCALE 1/2" = 1'-0" EXCEPT AS NOTED AUGUST 1958
COUNTY OF LOS ANGELES
JOHN A. LAMBIE COUNTY ENGINEER
PREPARED IN THE OFFICES
OF
KEMMERER ENGINEERING CO. INC.
HANS C. THOMSEN R.E. 8244
APPROVED BY *Hans C. Thomsen* SANITATION ENGINEER
APPROVED
CHIEF ENGINEER OF CO. SAN. DIST. NO. 18
BY *[Signature]* OFFICE ENGINEER
CHECKED BY *[Signature]* OFFICE OF COUNTY ENGINEER R.E. 0466

P.C. 4893