

PUENTE BLDG. DIST. NO. 2

PROFILE ALIGNMENT AND GRADE OF P.C. 4896  
 SANITARY SEWERS PAGE 1  
 TO BE CONSTRUCTED IN

TRACT No 20912  
 PRIVATE CONTRACT NO. 4896

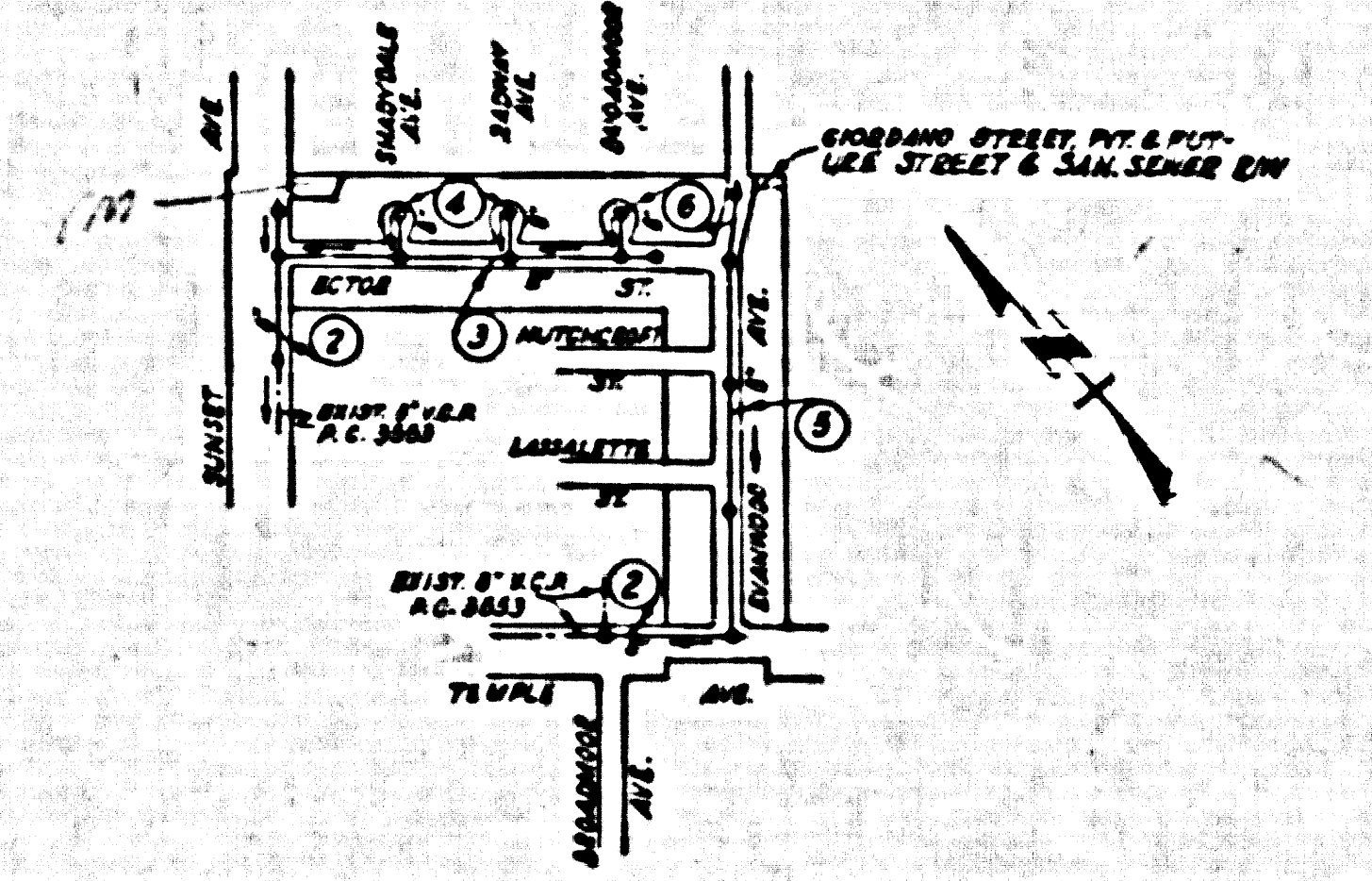
W.S. 38  
 3 SHEETS, 6 PAGES  
 SCALE: VERT. 1" = 4'  
 HORIZ. 1" = 40'  
 SEPT. 1958  
 PREPARED IN THE OFFICES OF  
 A. RICHARD BROWN, JR.  
 7631 COMMONWEALTH AVENUE, BUENA PARK, CALIF.  
 REG. C. E. NO. 2713

26,982

BENCH MARK S.G.1096 RESET  
 Road Dept. B.M. Tag in W. Curb of  
 Sunset Avenue, 1' 3" N. of N. Edge of  
 Catch Basin at S.W. Corner of  
 Sunset Avenue & Temple Avenue  
 6' 70" S. & 2' 40" W. of E Intersection  
 (Puente Quad)  
 ELEVATION = 308.754 1958 Adj.

1. PROVIDE STAKES ON THE PROPERTY LINE OR PROPERTY LINES PRODUCED AT RIGHT ANGLES TO THE SEWER LINE AT THE CENTER LINE OF EACH MANHOLE.
2. NO REPRESENTATIVE OF THE COUNTY ENGINEER WILL SURVEY OR LAY OUT ANY PORTION OF THE WORK.
3. THE OWNER OR HIS AUTHORIZED REPRESENTATIVE SHALL FURNISH THE COUNTY ENGINEER WITH GRADE SHEETS AND STATIONING FOR ALL HOUSE LATERALS AND BRANCHES AND SHALL PROVIDE STAKES FOR THEM AT THEIR PROPER LOCATIONS WITH STATIONING PLAINLY MARKED. ANY CHANGE IN LOCATION SHALL BE REQUESTED IN WRITING BY THE OWNER OR HIS REPRESENTATIVE.
4. THE PRIVATE ENGINEER SHALL FURNISH THE HOUSE LATERAL BATHS AT THE PROPERTY LINE BELOW THE TOP OF CURB ELEVATION FOR EACH HOUSE LATERAL ON 1-1/2 GRADE SHEET.
5. NO BRISONS SHALL BE MADE IN THESE PLANS WITHOUT THE APPROVAL OF THE COUNTY ENGINEER.
6. USE STANDARD MANHOLE FRAMES AND COVERS, S-117.
7. USE STANDARD STRENGTH PIPE.
8. USE CHERRY WOODS OR "WEDGE-LOCK" OR "SPEED-SEAL" FOR ALL V.C.P. JOINTS PER SPEC., SECS. 26 & 41.
9. RESURFACE ALL TRUCKS WITHIN PAVED AREA TO MEET L.A. COUNTY ROAD DEPT. OR CALIF. STATE HIGHWAY REQUIREMENTS IN ACCORDANCE WITH PERMITS.
10. INCASE FOUR FEET OF SEWER AT POINTS OF INTERFERENCE WITH POLES, CASE NO. S-172.
11. HOUSE LATERALS TO BE CONSTRUCTED WITH INVERTS AT PROPERTY LINE 6" TO 12" BELOW CURB GRADE EXCEPT AS NOTED.
12. ALL STRUCTURES SHALL BE BRICK OR CONCRETE STRUCTURES, S-104.
13. FOR ALLOWABLE LEAKAGE TEST USE FORMULA NO. 1, SPEC., SEC. 54.
14. MANHOLE POPE IN UNAPPROVED RIGHTS-OF-WAY TO BE SIX INCHES ABOVE FINISHED GRADE.
15. THE CONTRACTOR SHALL NOTIFY THE CONSTRUCTION & STORM DRAIN DIVISION BY TELEPHONE, MARSH 9-4747, EXT. 241, AT LEAST TWENTY-FOUR HOURS BEFORE STARTING ANY WORK UNDER THIS CONTRACT.

NO CHARGE FOR CONNECTIONS  
 B.M. Cadwell 1-31-58



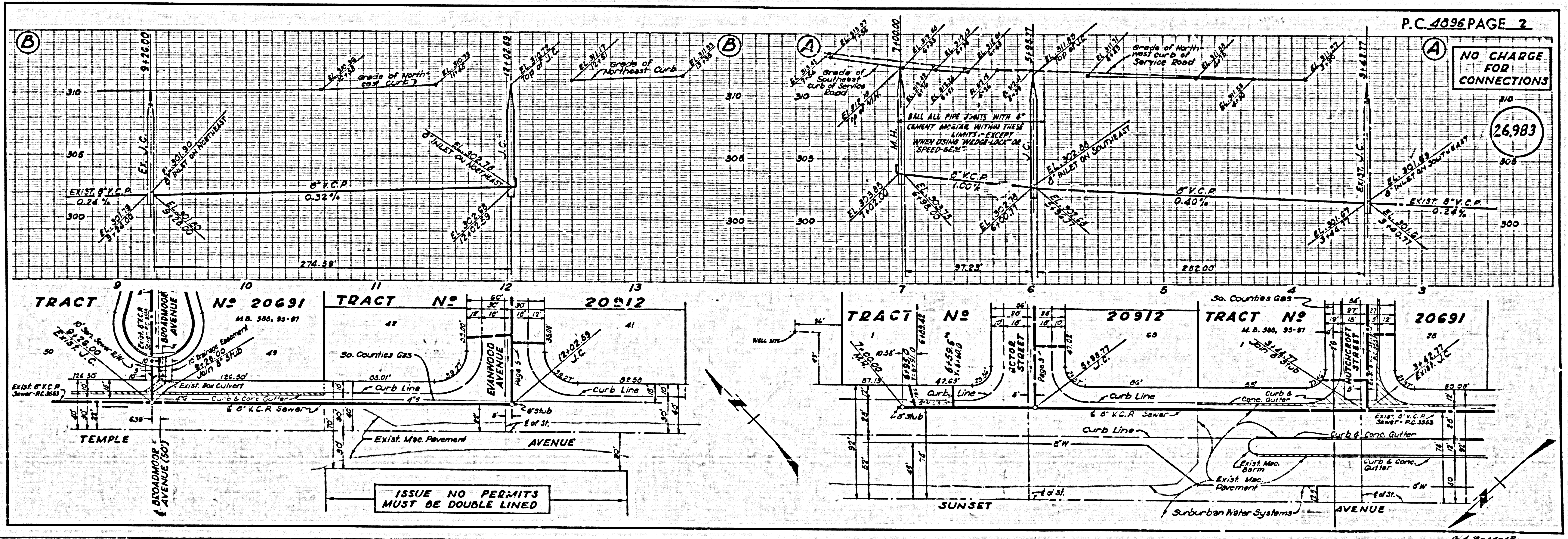
INDEX MAP  
 SCALE: 1" = 400'  
 TRACT No 20912  
 P.C. 4896

FOR LEGEND SEE PLAN NO. S-A-64

NOTES:  
 GRADES TO WHICH THIS IMPROVEMENT IS TO BE CONSTRUCTED ARE SHOWN ON PLANS AND PROFILES. GRADE FORMS FOR TOP OF CURB, CENTER LINE OF STREET, OR CENTER LINE OF ALLEYS ARE SHOWN BY "C" CIRCLES ON PROFILES. AT ALL POINTS BETWEEN RESOLUTION POINTS THE GRADE SHALL BE ESTABLISHED AS TO CONFORM TO A STRAIGHT LINE BEYOND BETWEEN SAID RESOLUTION POINTS.  
 ELEVATIONS ARE IN FEET ABOVE U.S.C. & G.S. SEA LEVEL DATUM OF 1929.  
 THIS DRAWING AND THE DATA HEREON ARE HEREBY MADE A PART OF THE SPECIFICATIONS.  
 WORK SHALL BE CONSTRUCTED ACCORDING TO SPECIFICATIONS ON FILE IN THE OFFICE OF THE COUNTY ENGINEER AND SHALL BE PROSECUTED ONLY IN THE PRESENCE OF THE COUNTY ENGINEER.  
 BEFORE WORK CAN BE STARTED, THE CONTRACTOR MUST OBTAIN A PERMIT TO EXCAVATE IN COUNTY STREETS FROM THE COUNTY ROAD DEPT., DISTRICT OFFICE NO. 1, AND MAKE A REPORT WITH THE COUNTY ENGINEER, ROOM 204 FARM AVENUE, BUENOS AIRES, CALIF. 90001.  
 APPROVAL OF THIS PLAN BY THE COUNTY OF LOS ANGELES DOES NOT CONSTITUTE A REPRESENTATION AS TO THE ACCURACY OF THE LOCATION OF THE EXISTENCE OR NON-EXISTENCE OF ANY UNDERGROUND UTILITY PIPE, OR STRUCTURE WITHIN THE LIMITS OF THE PROJECT. THIS NOTE APPLIES TO ALL PAGES.  
 IF WORK IS TO BE DONE IN A STATE HIGHWAY, A PERMIT MUST BE OBTAINED FROM THE STATE OF CALIFORNIA, DIVISION OF HIGHWAYS, 120 SOUTH BRIDGE STREET.

COUNTY OF LOS ANGELES, CALIFORNIA  
 APPROVED, JOHN A. LAMBE, COUNTY ENGINEER  
 APPROVED, C.E. COMPTON, CHIEF ENGINEER  
 BY *C.H. Hughes* SANITATION ENGINEER  
 BY *C.E. Compton* CHIEF ENGINEER  
 CHECKED BY *W.C. Wicks* 2-12-58  
 OFFICE OF COUNTY ENGINEER, REG. C. E. NO. 2406

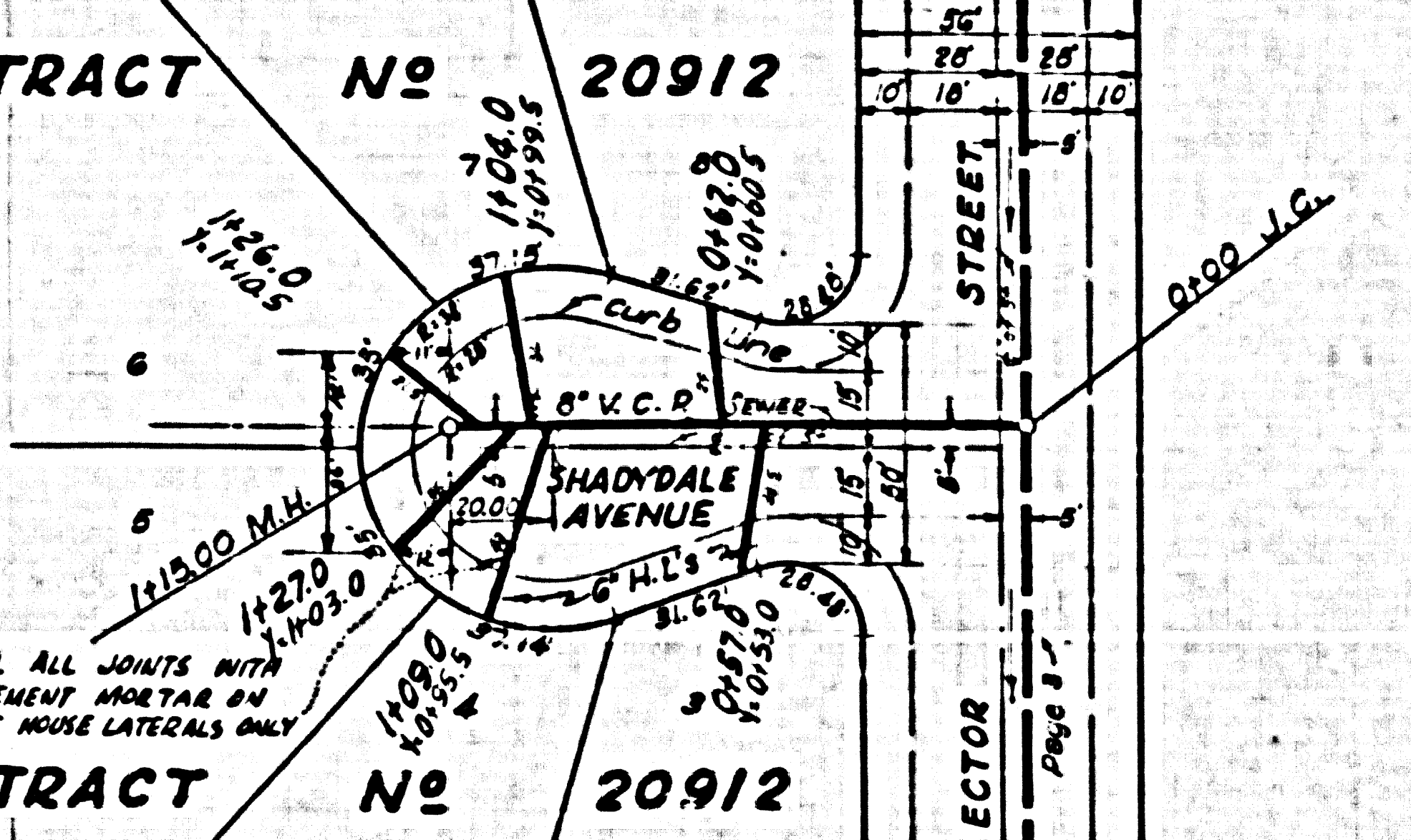
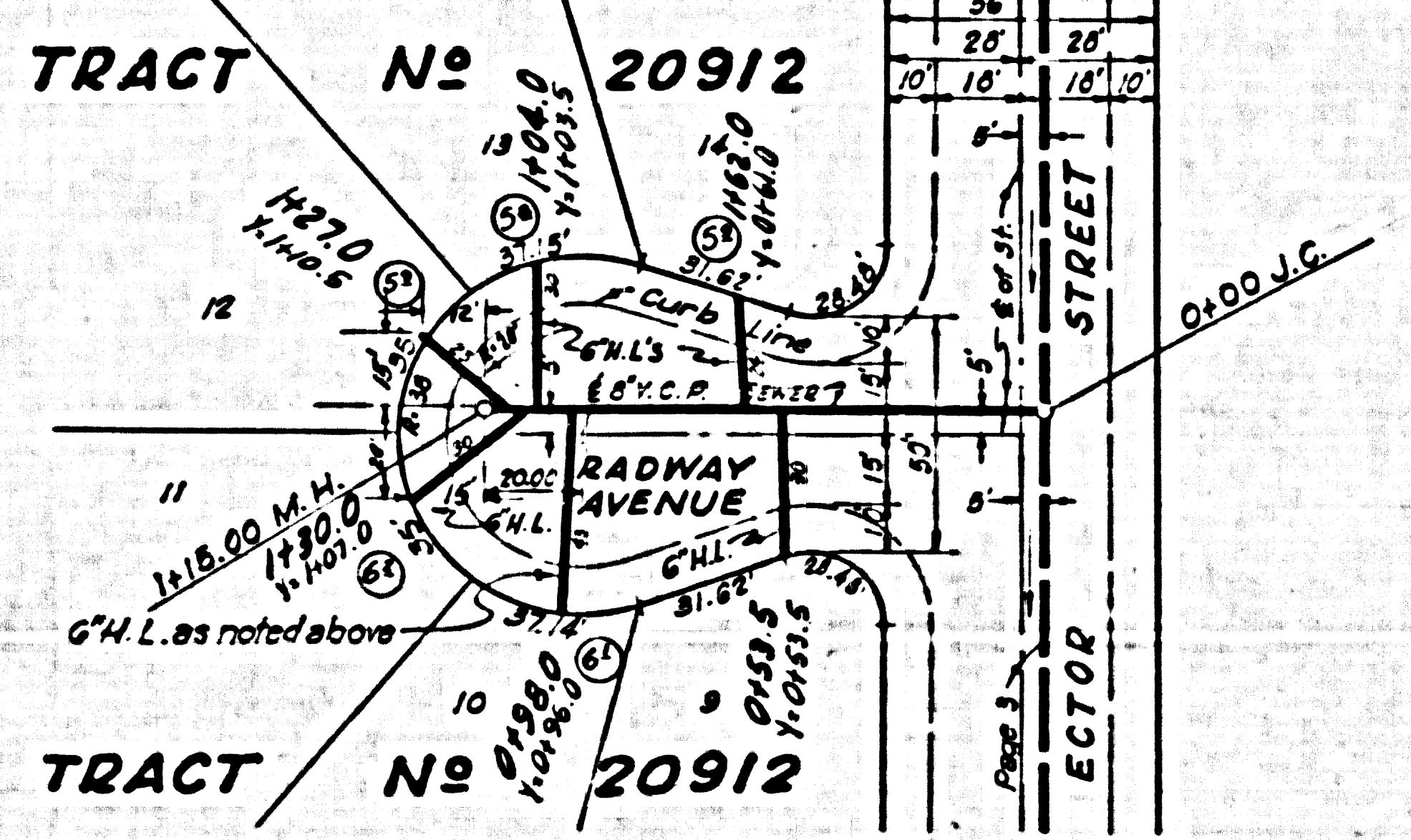
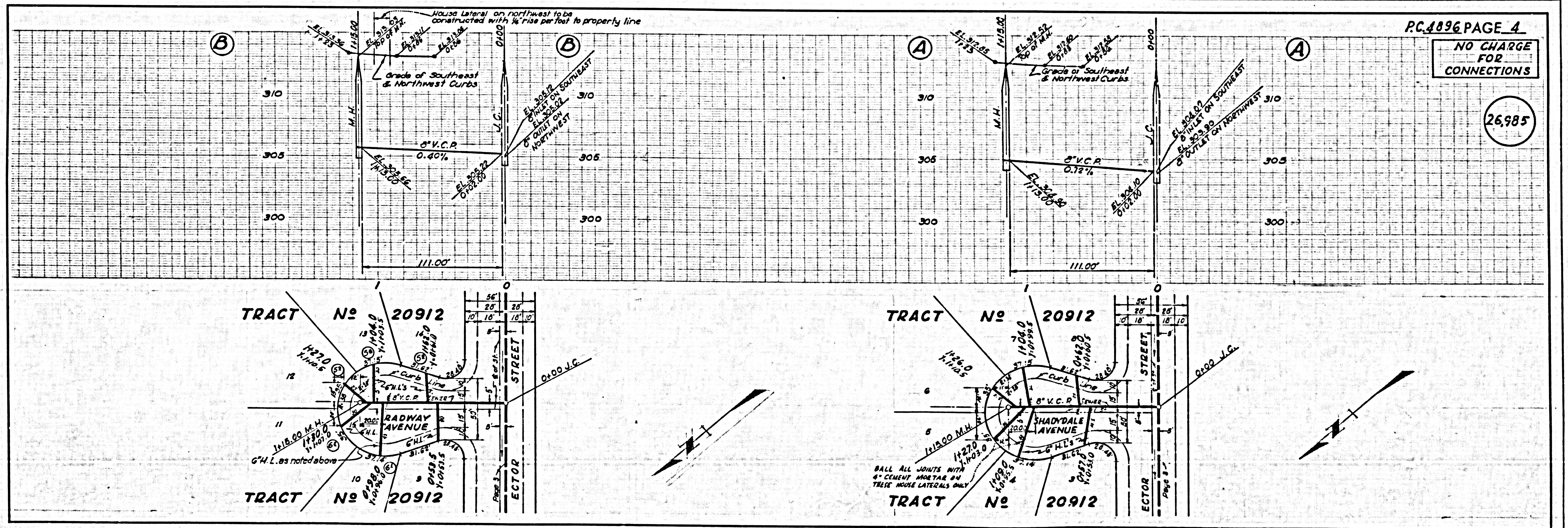
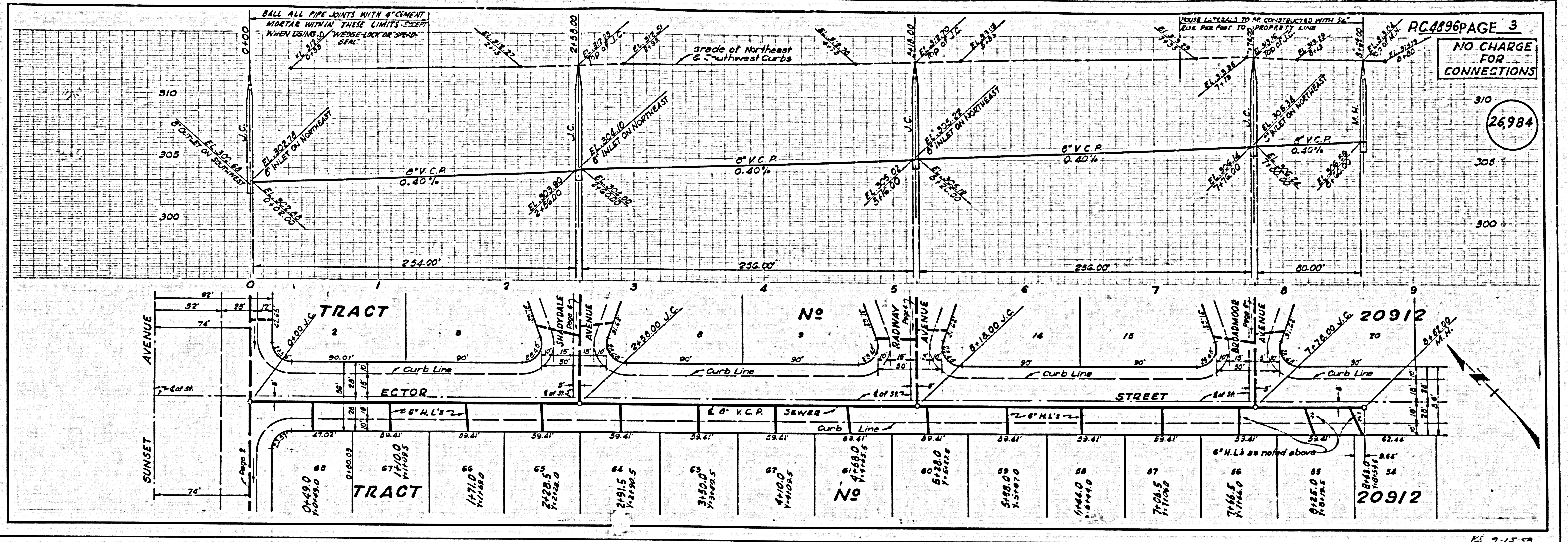
SUBMITTED BY *N.F. Brando*  
 SAN GABRIEL VALLEY REGIONAL ENGINEER



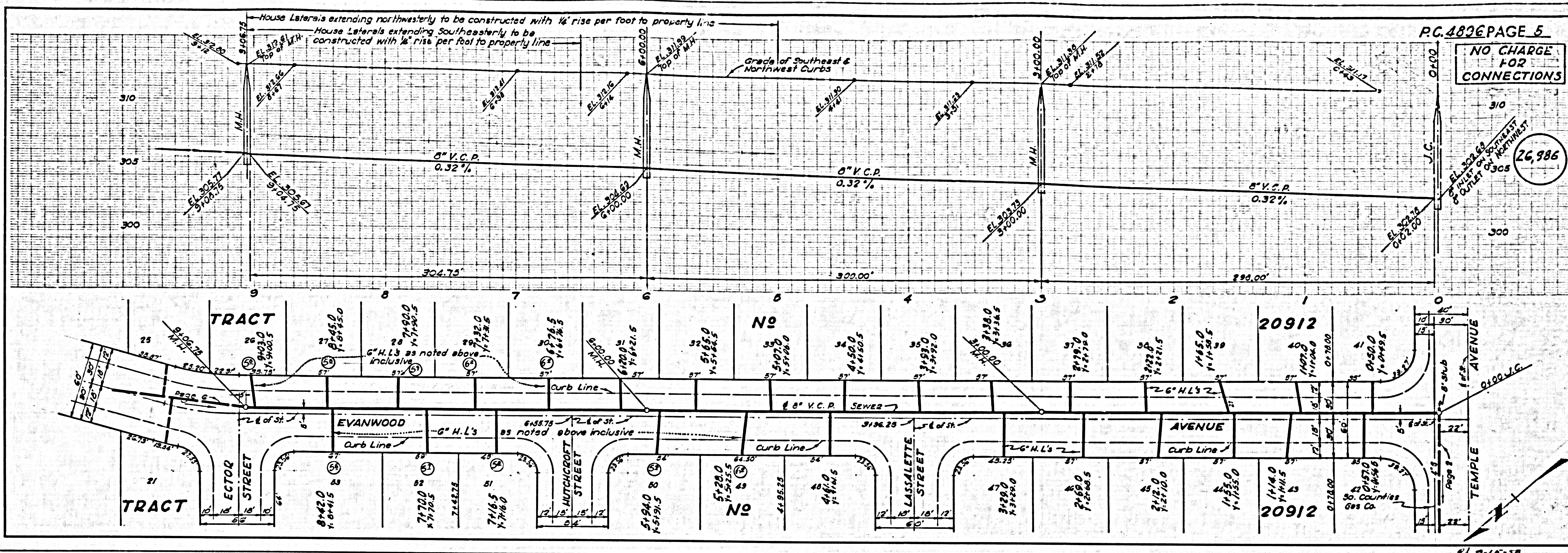
NO CHARGE FOR CONNECTIONS  
 26,983

ISSUE NO PERMITS MUST BE DOUBLE LINED

9-13-58



PC 4896 TRACT No 20912

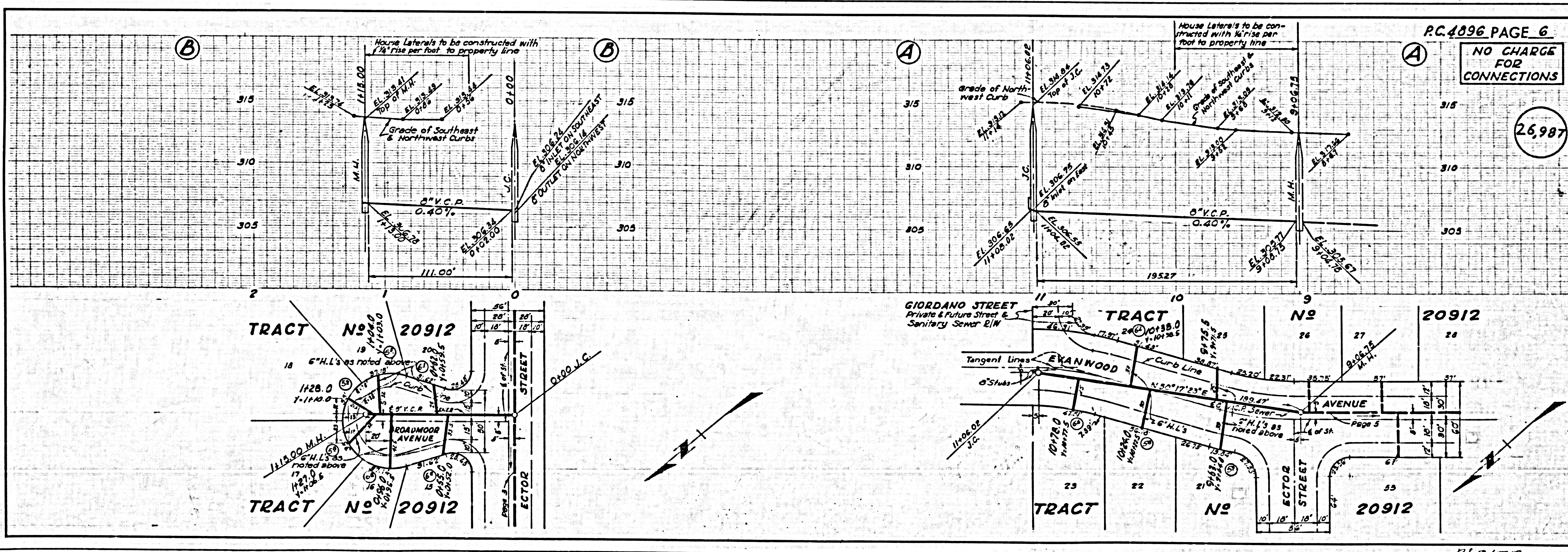


PC 4826 PAGE 5

NO CHARGE FOR CONNECTIONS

26,986

RL 9-10-58



PC 4896 PAGE 6

NO CHARGE FOR CONNECTIONS

26,987

RL 9-10-58

Handwritten note: 'X Streets & Flooding'