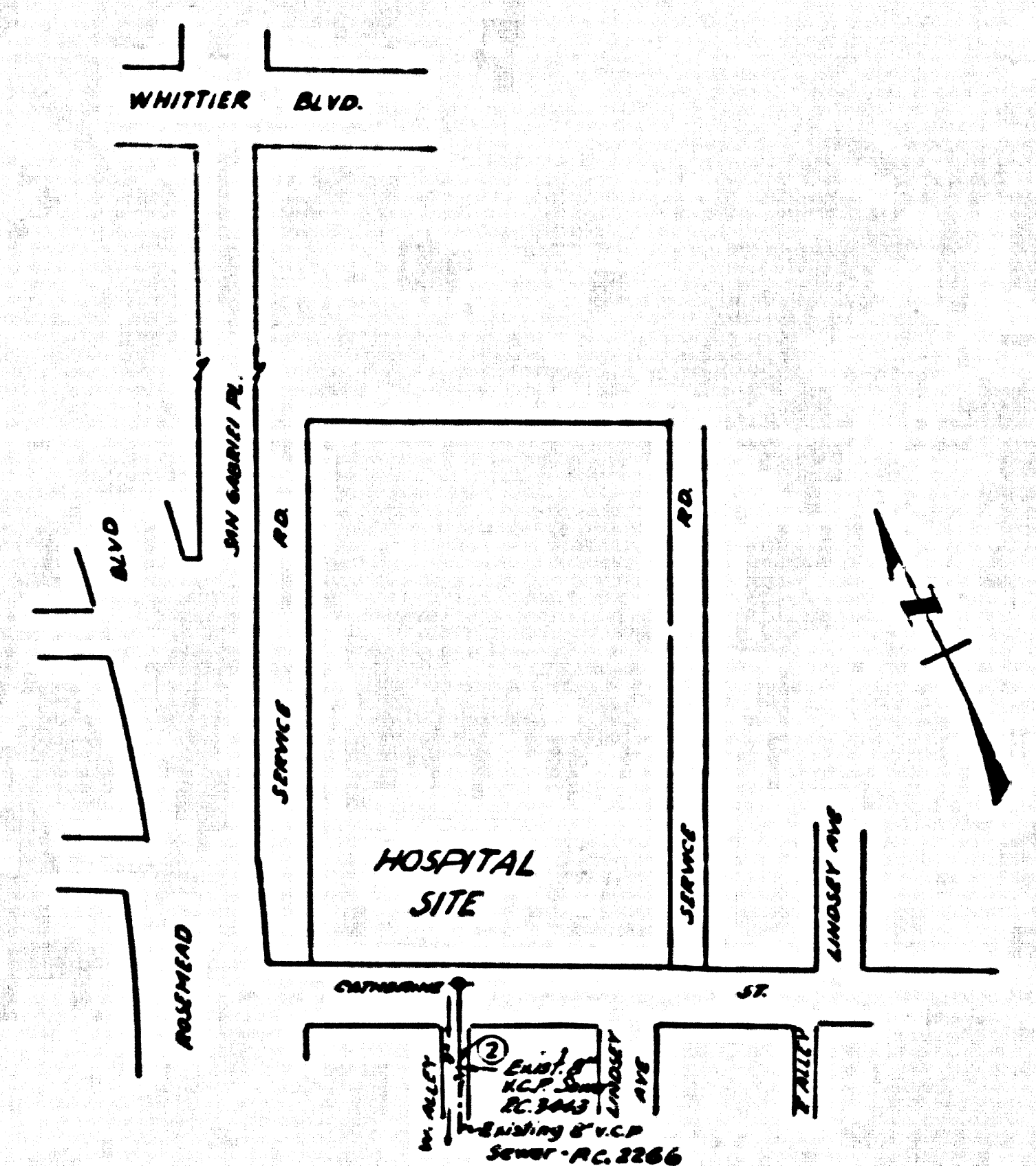


B.M. N.P.S.Y. - 2476 Elev. 176.161  
Lead of road in corner of Curk Adam  
on N.E. corner of Loch Avon Dr. &  
Passans Blvd. Rivera Quad - 1955



INDEX MAP  
SCALE 1"=200'  
P.C. 4905

PICO RIVERA BLDG. DIST. NO. 11.01

- NOTES:
- PROVIDE STAKES ON THE PROPERTY LINE OR PROPERTY LINES PRODUCED AT RIGHT ANGLES TO THE CENTER LINE OF EACH MANHOLE.
  - NO REPRESENTATIVE OF THE CITY ENGINEER WILL SURVEY OR LAYOUT ANY PORTION OF THE WORK.
  - THE OWNER OR HIS AUTHORIZED REPRESENTATIVE SHALL FURNISH THE CITY ENGINEER WITH GRADE SHEETS AND STATION FOR ALL HOUSE LATERALS AND Y BRANCHES AND SHALL PROVIDE STAKES FOR THEM AT THEIR PROPER LOCATIONS WITH STATIONING PLAINLY MARKED. ANY CHANGE IN LOCATION SHALL BE REQUESTED IN WRITING BY THE OWNER OR HIS REPRESENTATIVE. NO REVISIONS SHALL BE MADE IN THESE PLANS WITHOUT THE APPROVAL OF THE CITY ENGINEER.
  - USE STANDARD MANHOLE FRAMES AND COVERS, S.A-117, EXCEPT AS NOTED.
  - USE STANDARD STRENGTH PIPE EXCEPT AS NOTED.
  - USE CEMENT MORTAR "HUNDALE-LOCK" OR "SPRUE-ARM" FOR ALL V.C.P. JOINTS PER S.P.C.S. SEC. 56 & 57.
  - REPLACE ALL BRICKS WITH "TAYLOR ARMA" TO MEET L.A. COUNTY ROAD DEPT. OR CALIF. STATE HIGHWAY DEPT. REQUIREMENTS IN ACCORDANCE WITH PERMITS.
  - INCLUDE FOUR FEET OF SEWER AT POINTS OF INTERFERENCE WITH POLES, S.A-119.
  - HOUSE LATERALS TO BE CONSTRUCTED WITH INVERTS AT PROPERTY LINE \_\_\_\_\_ FEET BELOW CURB GRADE EXCEPT AS NOTED.
  - ALL STRUCTURES SHALL BE BRICK SEWER STRUCTURES, S.A-194, EXCEPT AS NOTED.
  - FOR ALLOWABLE LEAKAGE TEST USE FORMULA NO. \_\_\_\_\_ S.P.C.S., SEC. 56.
  - MANHOLE TOPS IN UNIMPROVED RIGHTS-OF-WAY TO BE 6" ABOVE FINISHED GRADE.
  - THE PRIVATE ENGINEER IS TO FURNISH THE ABOVE LATERAL DEPTH OF THE PROPERTY LINE BELOW THE TOP OF CURB ELEVATION FOR EACH HOUSE LATERAL, ON THE GRADE SHEET.

ISSUE NO PERMITS.  
CALL MAIN OFFICE.  
NORTHERLY 30' OF  
CATHERINE ST. MUST  
BE DEDICATED BEFORE  
ISSUANCE OF PERMITS.

NO CHARGE FOR  
CONNECTIONS.  
7/29/58 Revised 8-25-59

NOTE:  
THE CONTRACTOR SHALL NOTIFY THE CONSTRUCTION AND STORM DRAIN DIVISION BY TELEPHONE, MADISON 9-4747, EXT. 362, AT LEAST 24 HOURS BEFORE STARTING ANY WORK UNDER THIS CONTRACT.

J.V. 082068  
PROFILE ALIGNMENT AND GRADE OF  
SANITARY SEWERS PAGE 1  
TO BE CONSTRUCTED IN  
CATHERINE STREET, 26,945  
AND  
FIRST ALLEY EAST OF ROSEMEAD BLVD  
PRIVATE CONTRACT NO. 4905

W.S. 36  
SHEET 2 PAGES  
SCALE: HORIZ. 1"=40' VERT. 1"=4'  
SEPTEMBER, 1958  
PREPARED IN THE OFFICES OF  
H.R. LOVETT AND ASSOCIATES, INC.  
ENGINEERS AND SURVEYORS.  
BY: C.H. Kallera  
REG. C. E. NO. 16418  
FOR LEGEND SEE PLAN NO. S-A-64

NOTES:  
GRADES TO WHICH THIS IMPROVEMENT IS TO BE CONSTRUCTED ARE SHOWN ON PLANS AND PROFILE. GRADE POINTS FOR TOP OF CURBS, CENTER LINE OF STREETS, OR CENTER LINE OF ALLEYS ARE SHOWN BY CIRCLES ON PROFILES. AT ALL POINTS BETWEEN DESIGNATED POINTS THE GRADE SHALL BE ESTABLISHED SO AS TO CONFORM TO A STRAIGHT LINE DRAWN BETWEEN SAID DESIGNATED POINTS.  
ELEVATIONS ARE IN FEET ABOVE U.S.C. & G.S. MEAN SEA LEVEL UNLESS OTHERWISE NOTED.  
THIS DRAWING AND THE DATA HEREON ARE HEREBY MADE A PART OF THE SPECIFICATIONS.  
WORK SHALL BE CONSTRUCTED ACCORDING TO SPECIFICATIONS ON FILE IN THE OFFICE OF THE CITY ENGINEER AND SHALL BE PROSECUTED ONLY IN THE PRESENCE OF THE CITY ENGINEER.  
BEFORE WORK CAN BE STARTED, THE CONTRACTOR MUST OBTAIN A PERMIT TO EXCAVATE IN CITY STREETS FROM THE L.A. COUNTY ROAD DEPT. BEFORE WORK AND MAKE A DEPOSIT WITH THE CITY ENGINEER, ROOM 224 SAN JUAN AMERICAN BUILDING 233 SO. BROADWAY SUFFICIENT TO COVER THE COST OF CONSTRUCTION INSPECTION AND RECORD PLANS.  
APPROVAL OF THIS PLAN BY THE CITY OF PICO RIVERA DOES NOT CONSTITUTE A REPRESENTATION AS TO THE ACCURACY OF THE LOCATION OF OR THE EXISTENCE OR NON-EXISTENCE OF ANY UNDERGROUND BRICK PIPE, OR STRUCTURE WITHIN THE LIMITS OF THIS PROJECT. THIS NOTE APPLIES TO ALL PAGES.  
IF WORK IS TO BE DONE IN A STATE HIGHWAY, A PERMIT MUST BE OBTAINED FROM THE STATE OF CALIFORNIA, DIVISION OF HIGHWAYS, 120 SOUTH SPRING STREET.

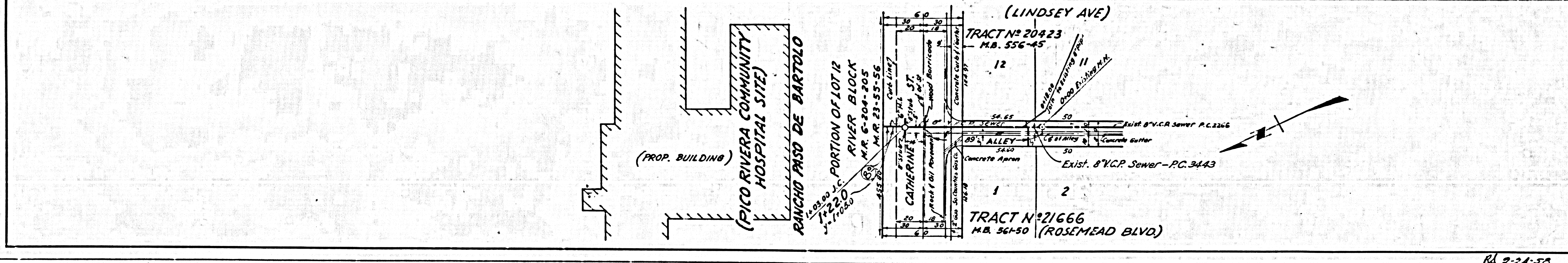
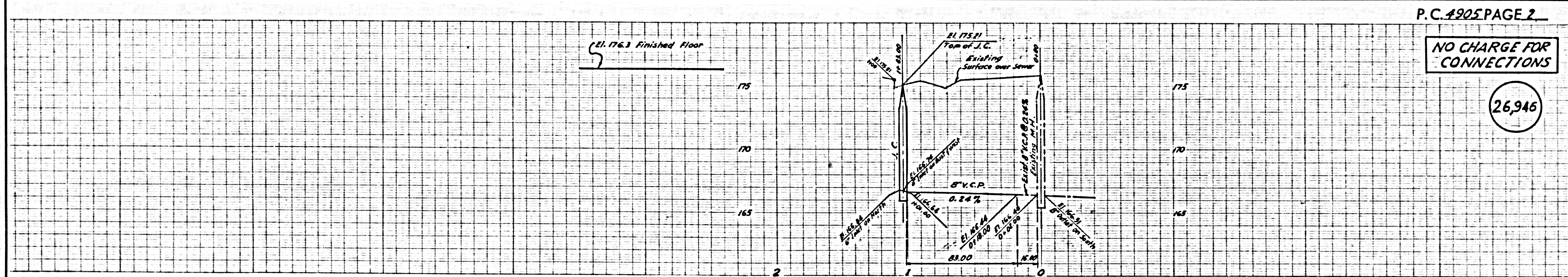
CITY OF PICO RIVERA, CALIFORNIA  
APPROVED, JOHN A. LAMBE, CITY ENGINEER  
APPROVED, A. M. BAWIN, CHIEF ENGINEER  
BY: H. L. Sander, SANITATION ENGINEER  
BY: C. H. Kallera, OFFICE ENGINEER  
CHECKED BY: S. K. Onda 8-25-59  
OFFICE OF CITY ENGINEER, REG. C. E. NO. 7466

INDUSTRIAL WASTE  
APPROVED Jack Brown 8-26-58

P.C. 4905 PAGE 2

NO CHARGE FOR  
CONNECTIONS

26,945



RA 8-24-58

P.C. 4905