

INDEX MAP
TRACT NO 21704
P.C. 4909
SCALE 1"=300'

B.M. No 20-1 Elev. 347.942 c.s. F.B. 1283 pag-174
Baldwin Ave. & Olive St. c.i. intersection
County Surveyor Monument in H.H. c.i. intersection

TEMPLE CITY BLDG. DIST. NO. 5

NOTES

- PROVIDE STAKES FOR THE PROPERTY LINE OR PROPERTY LINES PERPENDICULAR AT RIGHT ANGLES TO THE SEWER LINE AT THE CENTER LINE OF EACH BRANCH.
- NO REPRESENTATIVE OF THE COUNTY ENGINEER WILL SURVEY OR LAY OUT ANY PORTION OF THE WORK.
- THE OWNER OR HIS AUTHORIZED REPRESENTATIVE SHALL FURNISH THE COUNTY ENGINEER WITH GRAB SHEETS AND STATIONING FOR ALL HOUSE LATERALS AND Y BRANCHES AND SHALL PROVIDE STAKES FOR THEM AT THESE PROPER LOCATIONS WITH STATIONING PLAINLY MARKED. ANY CHANGE IN LOCATION SHALL BE REQUESTED IN WRITING BY THE OWNER OR HIS REPRESENTATIVE.
- THE PRIVATE ENGINEER SHALL FURNISH THE HOUSE LATERAL DEPOT AT THE PROPERTY LINE BELOW THE TOP OF CURB ELEVATION FOR EACH HOUSE LATERAL ON THE GRADE SHEET.
- NO REVISIONS SHALL BE MADE BY THESE PLANS WITHOUT THE APPROVAL OF THE COUNTY ENGINEER.
- USE STANDARD MANHOLE FRAMES AND COVERS, S-117.
- USE STANDARD STRENGTH PIPE EXCEPT AS NOTED.
- USE CELESTIAL MOUNTAIN L.A. "WEDGE-SOCKET" OR "SPREAD-BEAR" FOR ALL V.C.P. JOINTS PER SPECS., SPEC. 30 & 31.
- RESURFACE ALL TRENCH WITHIN PAVED AREA TO MEET L.A. COUNTY ROAD DEPT. OR CALIF. STATE HIGHWAY REQUIREMENTS IN ACCORDANCE WITH PERMITS.
- ENCASE FOUR FEET OF SEWER AT POINTS OF INTERFERENCE WITH POLES, C.A. 2 SE, S-117.
- HOUSE LATERALS TO BE CONSTRUCTED WITH INVERTS AT PROPERTY LINE. 6" RISE FROM CURB GRADE.
- ALL STRUCTURES SHALL BE SPICE SEWER STRUCTURES, S-116.
- FOR ALLOWABLE LEAKAGE TEST USE FORMULA NO. 1, SPECS., SEC. 34.
- MANHOLE FOUR IN UNIMPROVED RIGHTS-OF-WAY TO BE SIX INCHES ABOVE FINISHED GRADE.
- THE CONTRACTOR SHALL NOTIFY THE CONSTRUCTION & ROAD BRANCH DIVISION OF TELEPHONE, MARSHON 9-27, EXT. 345, AT LEAST TWENTY-FOUR HOURS BEFORE STARTING ANY WORK UNDER THIS CONTRACT.

PROFILE ALIGNMENT AND GRADE OF **P.C. 4909**
SANITARY SEWERS PAGE 1
TO BE CONSTRUCTED IN

TRACT No 21704 (26,437)

PRIVATE CONTRACT NO. 4909

W.S. 44

1 SHEET, 2 PAGES

SCALE: VERT. 1"=6' HORIZ. 1"=40' SEPT. 1958
PREPARED IN THE OFFICES OF

TREADWELL ENGINEERING CORPORATION

BY W.G. Treadwell REG. C. E. NO. 312

FOR LEGEND SEE PLAN NO. S-A-64

NOTES
GRABES TO WHICH THIS IMPROVEMENT IS TO BE CONSTRUCTED ARE SHOWN ON PLANS AND PROFILES. GRADE POINTS FOR TOP OF CURB, CENTER LINE OF STREETS, OR CENTER LINE OF ALLEYS ARE SHOWN BY CIRCLES ON PROFILES. AT ALL POINTS BETWEEN DESIGNATED POINTS THE GRADE SHALL BE ESTABLISHED SO AS TO CONFORM TO A STRAIGHT LINE DRAWN BETWEEN SAID DESIGNATED POINTS.
ELEVATIONS ARE IN FEET ABOVE U.S.C. & G.S. SEA LEVEL DATUM OF 1929.
THIS DRAWING AND THE DATA HEREON ARE HEREBY MADE A PART OF THE SPECIFICATIONS.
WORK SHALL BE CONSTRUCTED ACCORDING TO SPECIFICATIONS ON FILE IN THE OFFICE OF THE COUNTY ENGINEER AND SHALL BE INSPECTED ONLY IN THE PRESENCE OF THE COUNTY ENGINEER.
BEFORE WORK CAN BE STARTED, THE CONTRACTOR MUST OBTAIN A PERMIT TO EXCAVATE IN COUNTY STREETS FROM THE L.A. COUNTY ROAD DEPT., DISTRICT OFFICE NO. 7, AND MAKE A DEPOSIT WITH THE COUNTY ENGINEER, ROOM 324 PAN AMERICAN BUILDING, \$25.00. RECEIPT BY SURVEYOR TO COVER THE COST OF CONSTRUCTION INSPECTION AND RECORD PLANS.
APPROVAL OF THIS PLAN BY THE COUNTY OF LOS ANGELES DOES NOT CONSTITUTE A REPRESENTATION AS TO THE ACCURACY OF THE LOCATION OF OR THE EXISTENCE OR NON-EXISTENCE OF ANY UNDERGROUND UTILITY PIPE, OR STRUCTURE WITHIN THE LIMITS OF THE PROJECT. THIS NOTE APPLIES TO ALL PAGES.
IF WORK IS TO BE DONE ON A STATE HIGHWAY, A PERMIT MUST BE OBTAINED FROM THE STATE OF CALIFORNIA, DIVISION OF HIGHWAYS, 138 SOUTH SPRING STREET.

COUNTY OF LOS ANGELES, CALIFORNIA

APPROVED, JOHN A. LAMME, COUNTY ENGINEER

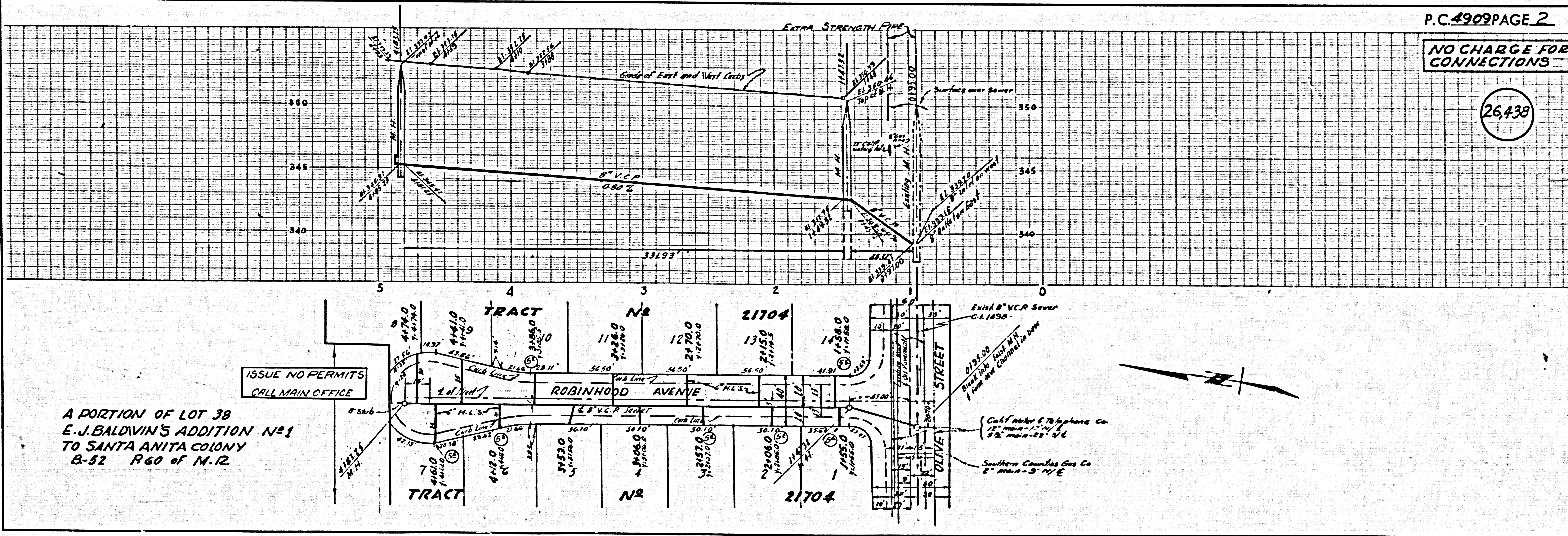
APPROVED, A. M. RAWNS, CHIEF ENGINEER

BY W.G. Treadwell W.G. Treadwell
REGISTERED ENGINEER REGISTERED ENGINEER

CHECKED BY W.G. Treadwell
OFFICE OF COUNTY ENGINEER, BUL. C. & NO. 3406

SUBMITTED N.P. Browder
San Gabriel Valley Regional Engineer

NO CHARGE FOR CONNECTIONS
W.G. Treadwell



P.C. 4909 PAGE 2

NO CHARGE FOR CONNECTIONS

(26,437)

A PORTION OF LOT 38
E.J. BALDWIN'S ADDITION No 1
TO SANTA ANITA COLONY
B-52 R 60 of M. 12

ISSUE NO PERMITS
CALL MAIN OFFICE

California Telephone Co.
1 1/2" main - 1 1/2" x 1/4" 3/4"
5/8" main - 2 1/2" x 3/4"

Southern Counties Gas Co
2" main - 3" x 1/4"

PL 10-24-58