

BENCH MARK SG 957
 Left in East curb Tyler Ave. 1' South
 curb return S.E. cor. Tyler Ave. and Milbann
 St. (Arcadia Quad)
 1935 Adj. Co. Jura Precise ELEV 324.284

NO CHARGE FOR
 CONNECTIONS
B.M. Cadwell

TEMPLE CITY BLDG. DIST. NO. 5

- NOTES
1. PROVIDE STAKES ON THE PROPERTY LINE OR PROPERTY LINES PRODUCED AT RIGHT ANGLES TO THE SEWER LINE AT THE CENTER LINE OF EACH MANHOLE.
 2. NO REPRESENTATIVE OF THE COUNTY ENGINEER WILL SURVEY OR LAY OUT ANY PORTION OF THE WORK.
 3. THE OWNER OR HIS AUTHORIZED REPRESENTATIVE SHALL FURNISH THE COUNTY ENGINEER WITH GRADE SHEETS AND STATIONING FOR ALL HOUSE LATERALS AND Y BRANCHES AND SHALL PROVIDE STAKES FOR THEM AT THEIR PROPER LOCATIONS WITH STATIONING PLAINLY MARKED. ANY CHANGE IN LOCATION SHALL BE REQUESTED IN WRITING BY THE OWNER OR HIS REPRESENTATIVE.
 4. THE PRIVATE ENGINEER SHALL FURNISH THE HOUSE LATERAL DIPPIN AT THE PROPERTY LINE BELOW THE TOP OF CURB ELEVATION FOR EACH HOUSE LATERAL ON THE GRADE SHEET.
 5. NO REVISIONS SHALL BE MADE IN THESE PLANS WITHOUT THE APPROVAL OF THE COUNTY ENGINEER.
 6. USE STANDARD MANHOLE FRAMES AND COVERS, S-117.
 7. USE STANDARD STRENGTH PIPE EXCEPT AS NOTED.
 8. USE JOINT COMPANED OR "WEDGE-LOCK" OR "SPREAD-SEAL" ON ALL V.C.P. JOINTS PER SPECS., SECS. 36 & 42.
 9. REINFORCE ALL TRENCH WITHIN PAVED AREA TO MEET L.A. COUNTY ROAD DEPT. OR CALIF. STATE HIGHWAY REQUIREMENTS IN ACCORDANCE WITH PERMITS.
 10. INCASE FOUR FEET OF SEWER AT POINTS OF INTERFERENCE WITH POLES, CASE III, S-172.
 11. HOUSE LATERALS TO BE CONSTRUCTED WITH INVERTS AT PROPERTY LINE $\frac{1}{2}$ FEET BELOW CURB GRADE EXCEPT AS NOTED.
 12. ALL STRUCTURES SHALL BE BRICK SEWER STRUCTURES, S-104.
 13. FOR ALLOWABLE LEAKAGE TEST USE FORMULA NO. 1, SPECS., SEC. 34.
 14. MANHOLE TOPS ON UNIMPROVED RIGHTS-OF-WAY TO BE SIX INCHES ABOVE FINISHED GRADE.
 15. THE CONTRACTOR SHALL NOTIFY THE CONSTRUCTION & STORM DRAIN DIVISION BY TELEPHONE, MANSION 9-4747, EXT. 342 AT LEAST TWENTY-FOUR HOURS BEFORE STARTING ANY WORK UNDER THIS CONTRACT.

TO BE CONSTRUCTED IN
TRACT No 21713

PRIVATE CONTRACT NO. 4911

W.S. 46

2 SHEETS, 3 PAGES

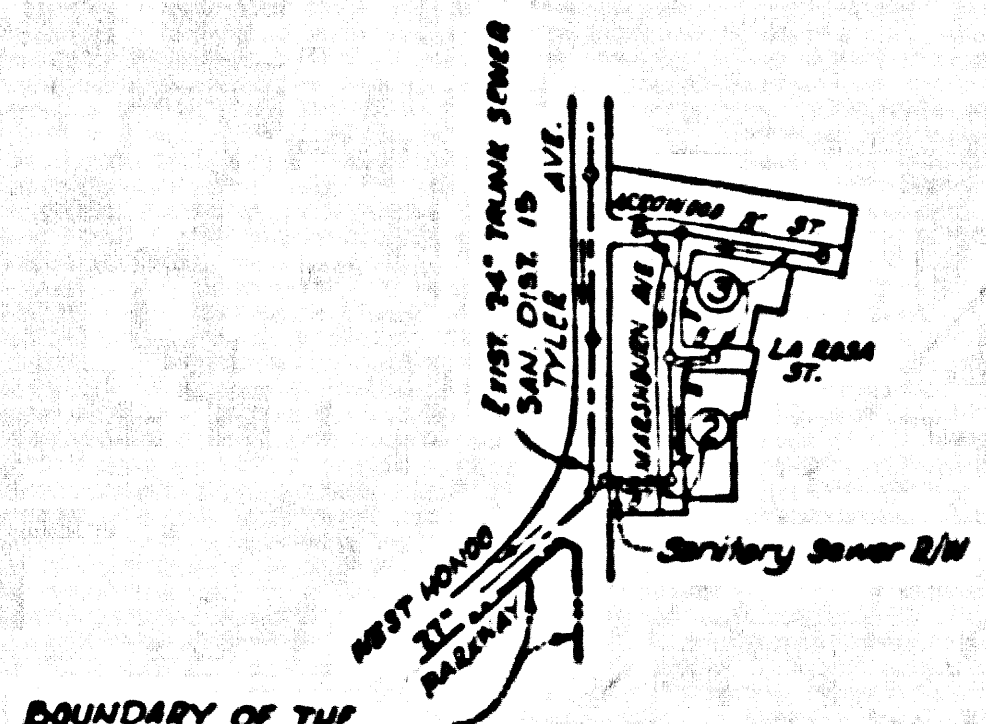
26,893

SCALE: HORIZ. 1" = 40' VERT. 1" = 4'

PREPARED IN THE OFFICES OF
 A. RICHARD BROWN JR.
 2832 CLAYTON AVENUE, B.N. LA 2-2333

By *A. Richard Brown*
 REG. C. E. NO. 12523

FOR LEGEND SEE PLAN NO. S-A-64



INDEX MAP
 SCALE: 1" = 400'
 TRACT No 21713
 P.C. 4911

REVISED 2-9-59
 1. CHANGED NOTE 8, PAGE 1
 2. CHARACTER ENGLISH IN NOTE 3-8
 3. ADDED ENCLOSURE, PAGE 3-8
 REVISION APPROVED:
Charles L. ...
 OFFICE OF COUNTY ENGINEER, REG. C. E. NO. 25433

GRADES TO WHICH THE IMPROVEMENT IS TO BE CONSTRUCTED ARE SHOWN ON PLANS AND PROFILE. GRADE POINTS FOR TOP OF CURB, CENTER LINE OF STREET, OR CENTER LINE OF ALLEY ARE SHOWN BY CIRCLES ON PROFILE. AT ALL POINTS BETWEEN INFORMATION POINTS THE GRADE SHALL BE ESTABLISHED SO AS TO COMFORM TO A STRAIGHT LINE DRAWN BETWEEN SAID INFORMATION POINTS.
 ELEVATIONS ARE IN FEET ABOVE U.S.C. & G.S. SEA LEVEL DATUM OF 1929.
 THIS DRAWING AND THE DATA HEREON ARE HEREBY MADE A PART OF THE SPECIFICATIONS.
 WORK SHALL BE CONSTRUCTED ACCORDING TO SPECIFICATIONS ON FILE IN THE OFFICE OF THE COUNTY ENGINEER AND SHALL BE PROSECUTED ONLY IN THE PRESENCE OF THE COUNTY ENGINEER.
 BEFORE WORK CAN BE STARTED, THE CONTRACTOR MUST OBTAIN A PERMIT TO EXCAVATE IN COUNTY STREETS FROM THE L. A. COUNTY ROAD DEPT., DISTRICT OFFICE NO. 1, AND MAKE A DEPOSIT WITH THE COUNTY ENGINEER, ROOM 324 PAN AMERICAN BUILDING, 2832 CLAYTON AVENUE, LOS ANGELES, CALIF. A REPRESENTATION AS TO THE ACCURACY OF THE LOCATION OF OR THE EXISTENCE OR NON-EXISTENCE OF ANY UNDERGROUND UTILITY PIPE, OR STRUCTURE WITHIN THE LIMITS OF THE PROJECT. THIS NOTE APPLIES TO ALL PAGES.
 IF WORK IS TO BE DONE IN A STATE HIGHWAY, A PERMIT MUST BE OBTAINED FROM THE STATE OF CALIFORNIA, DIVISION OF HIGHWAYS, 120 SOUTH BRIDGE STREET.

COUNTY OF LOS ANGELES, CALIFORNIA

APPROVED, JOHN A. LAMME, COUNTY ENGINEER

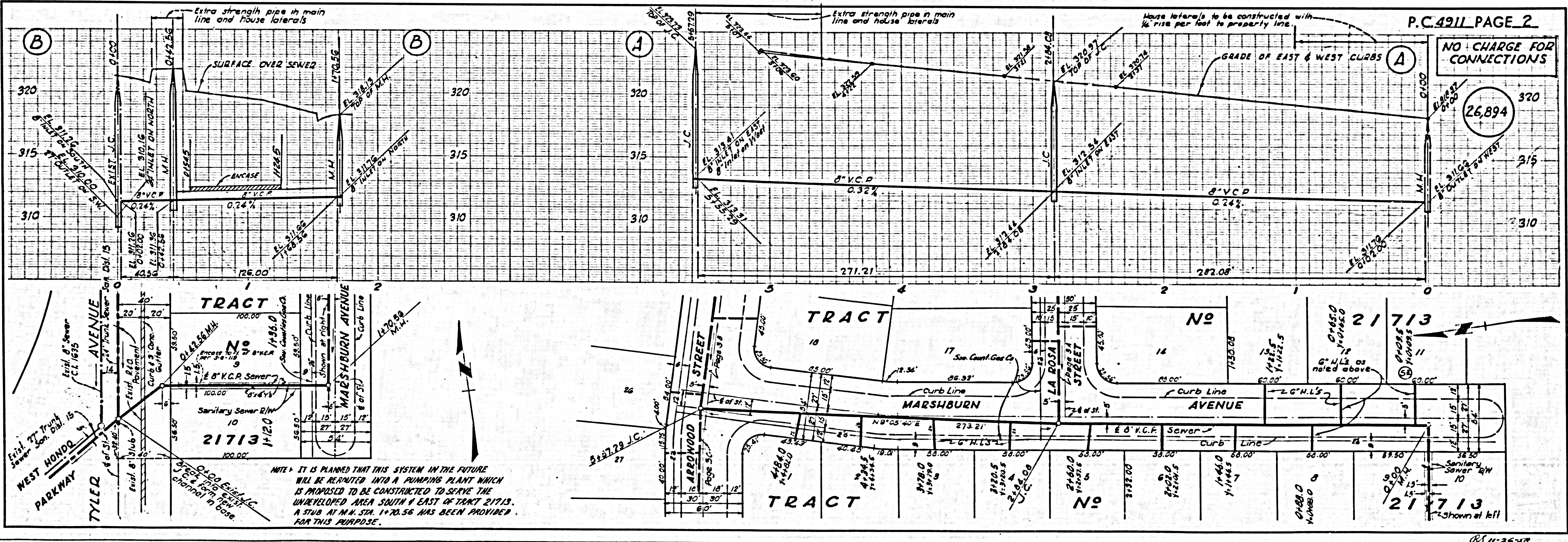
APPROVED, A. M. RAWIN, CHIEF ENGINEER
 CO. SAN. DIST. NO. 15

By *A. Richard Brown* SANITATION ENGINEER

By *P. P. ...* OFFICE ENGINEER

CHECKED BY *B. ...*
 OFFICE OF COUNTY ENGINEER, REG. C. E. NO. 25433

SUBMITTED *N. F. Bravender*
 SAN GABRIEL VALLEY REGIONAL ENGINEER

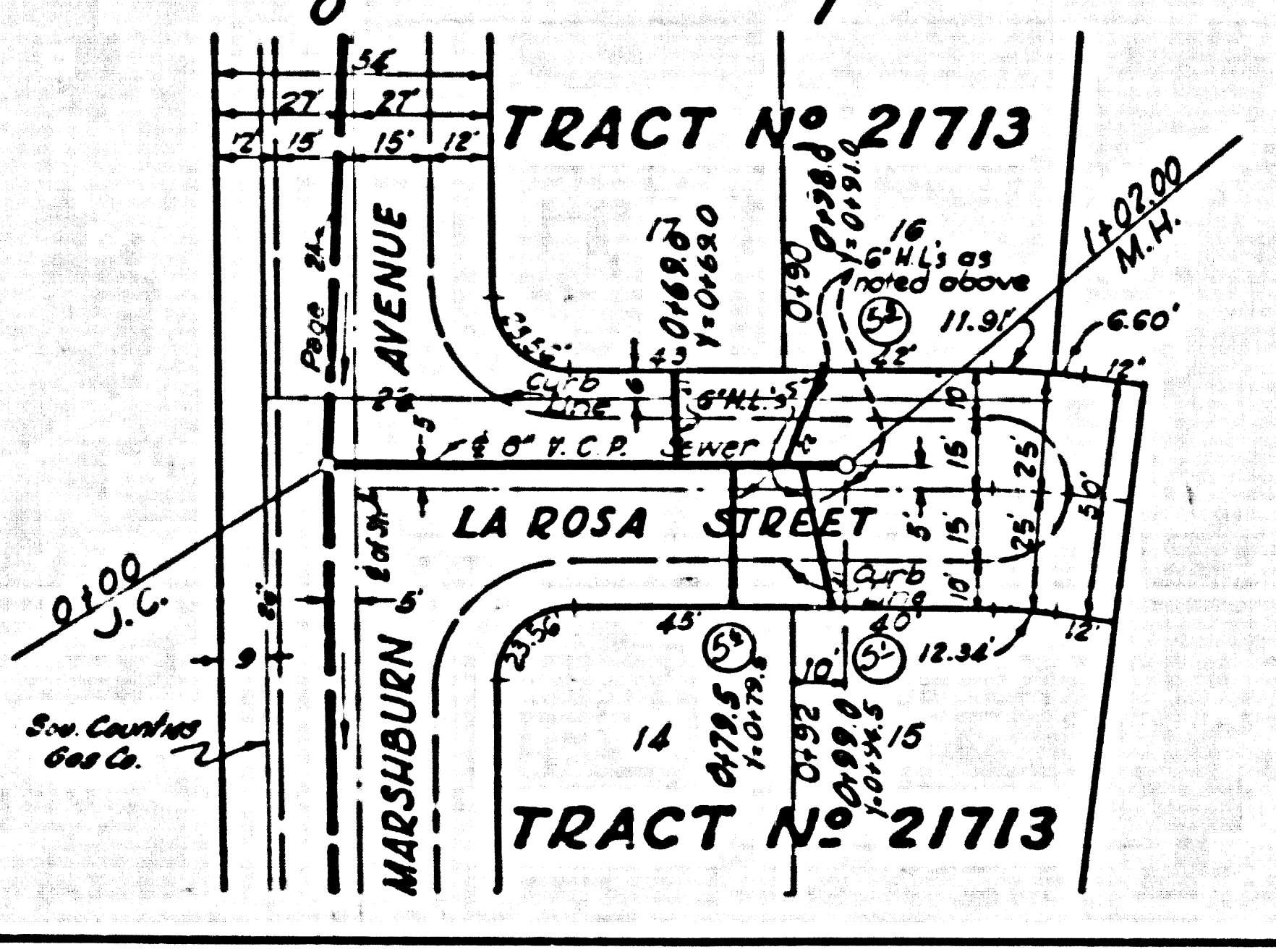
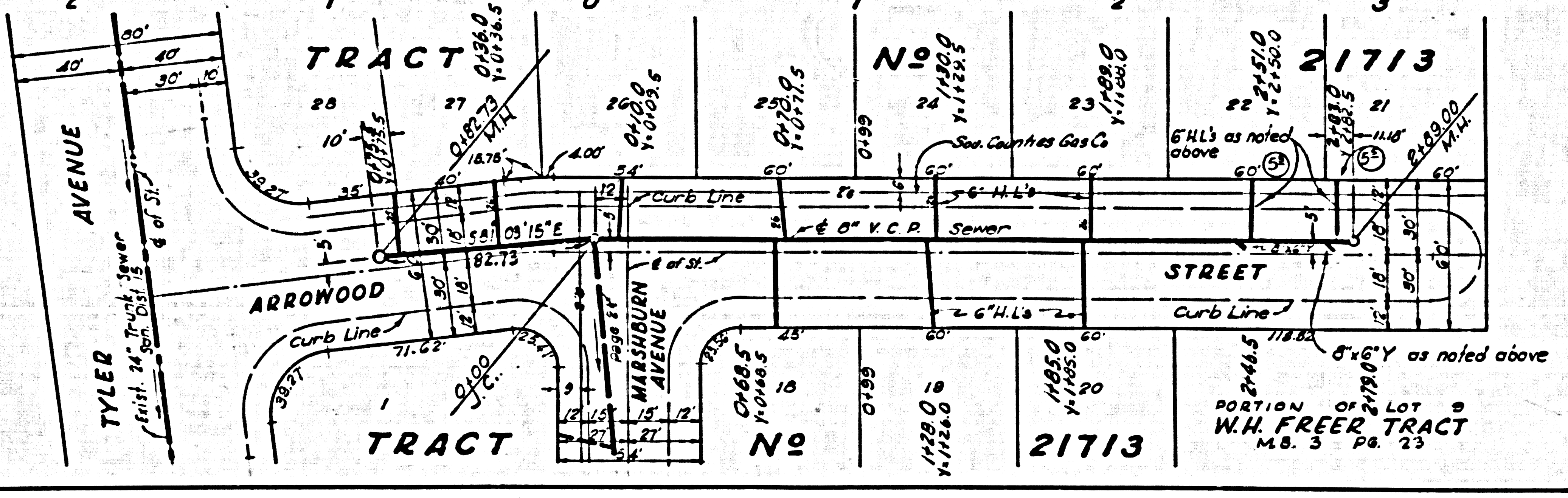
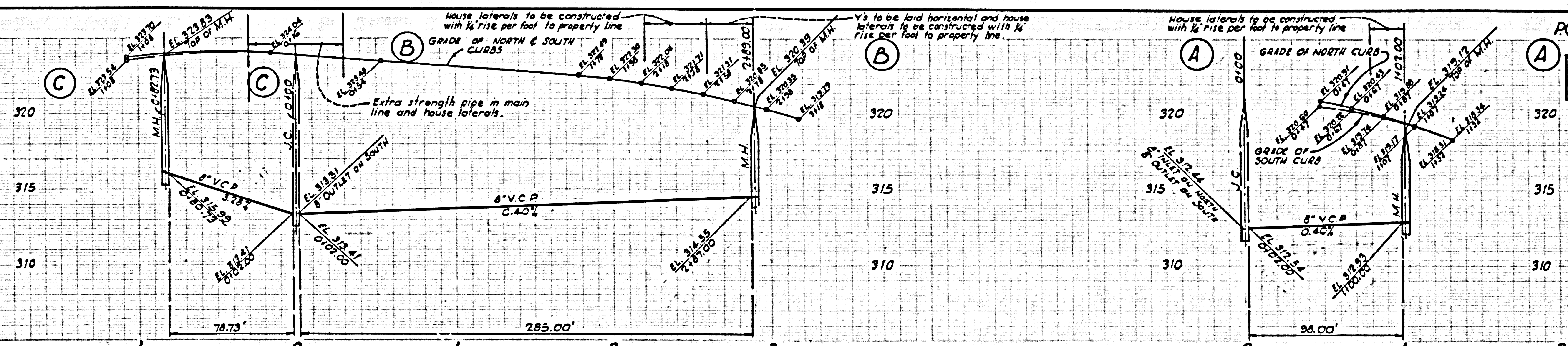


NO CHARGE FOR
 CONNECTIONS
 26,893

NOTE - IT IS PLANNED THAT THIS SYSTEM IN THE FUTURE WILL BE REUNITED INTO A PUMPING PLANT WHICH IS PROPOSED TO BE CONSTRUCTED TO SERVE THE UNDEVELOPED AREA SOUTH & EAST OF TRACT 21713. A STUD. AT M.H. STA. 1+70.56 HAS BEEN PROVIDED FOR THIS PURPOSE.

NO CHARGE FOR CONNECTIONS

26,895



House laterals to be constructed with 1/4" rise per foot to property line

GRADE OF NORTH & SOUTH CURBS

Extra strength pipe in main line and house laterals.

8" V.C.P. C.40%

8" H.L.'s as noted above

Y's to be laid horizontal and house laterals to be constructed with 1/4" rise per foot to property line.

House laterals to be constructed with 1/4" rise per foot to property line

GRADE OF NORTH CURB

GRADE OF SOUTH CURB

8" V.C.P. C.40%

8" H.L.'s as noted above

PORTION OF LOT B W.H. FREER TRACT M.B. 3 PG. 23