

LOMITA BLDG. DIST. NO. 71

PROFILE ALIGNMENT AND GRADE OF P.C. 4914  
 SANITARY SEWERS PAGE 1  
 TO BE CONSTRUCTED IN

TRACT No 23667

PRIVATE CONTRACT NO. 4914

W.S. 28

3 SHEETS; 5 PAGES

26,514

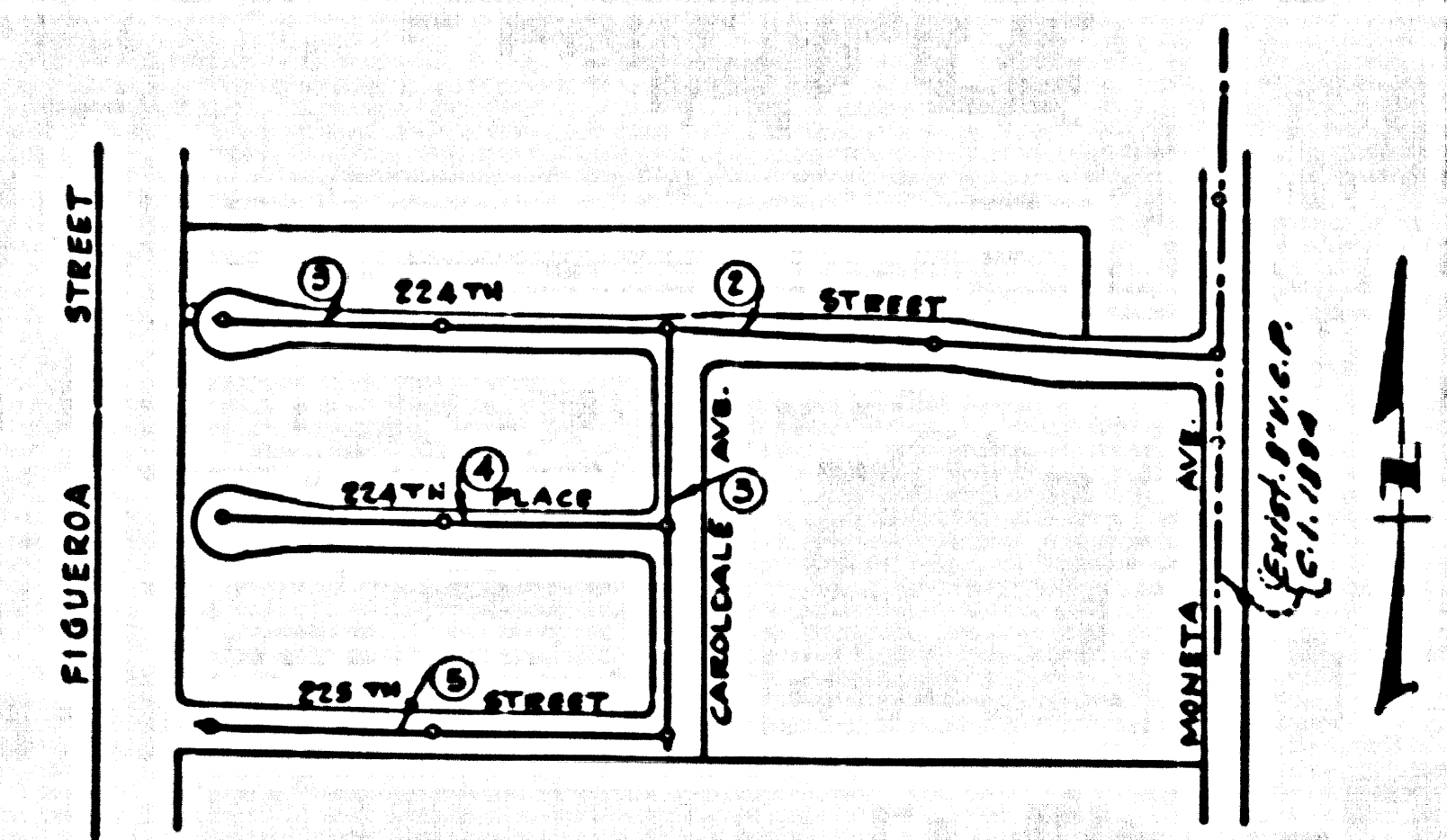
SCALE: VERT. 1"=4' HORIZ. 1"=40'

MARCH, 1958

PREPARED IN THE OFFICES OF  
 BARCLAY ENGINEERING CO., INC.

FOR LEGEND SEE PLAN NO. S-A-64

- NOTE:  
 PROVIDE STAKES ON THE PROPERTY LINE OR PROPERTY LINE PRODUCED AT RIGHT ANGLES TO THE SEWER LINE AT THE CENTER LINE OF EACH MANHOLE.
- NO REPRESENTATIVE OF THE COUNTY ENGINEER WILL SURVEY OR LAYOUT ANY PORTION OF THE WORK.
- THE OFFICE OF THE AUTHORIZED REPRESENTATIVE SHALL FURNISH THE COUNTY ENGINEER WITH GRADE SHEETS AND STATIONING FOR ALL HOUSE LATERALS AND T BRANCHES AND SHALL PROVIDE STAKES FOR THEM AT THEIR PROPER LOCATIONS WITH STATIONING PLANS MARKS. ANY CHANGE IN LOCATION SHALL BE REQUESTED BY WRITING OF THE OFFICE OR THE REPRESENTATIVE.
- NO REVISIONS SHALL BE MADE IN THESE PLANS WITHOUT THE APPROVAL OF THE COUNTY ENGINEER.
1. USE STANDARD MANHOLE FRAMES AND COVERS, S.A-117, EXCEPT AS NOTED.
  2. USE STANDARD STIFFNESS PIPE EXCEPT AS NOTED.
  3. USE CEMENT MORTAR OR "WEDGELOCK" OR "SHARP SHAL" FOR ALL U.S.A. SIZES FOR SIZES 18" AND 24" IN ACCORDANCE WITH SPECIFICATIONS.
  4. RESURFACE ALL TRINCHES WITHIN PAVED AREA TO MEET L.A. COUNTY ROAD DEPT. OR CALIF. STATE HIGHWAY DEPT. SPECIFICATIONS IN ACCORDANCE WITH SPECIFICATIONS.
  5. INSTALL FOUR FEET OF SEWER AT POINTS OF INTERFERENCE WITH POLES, S.A-117, EXCEPT AS NOTED.
  6. HOUSE LATERALS TO BE CONSTRUCTED WITH INVERTS AT PROPERTY LINE. JUST BELOW CURB GRADE EXCEPT AS NOTED.
  7. ALL STRUCTURES SHALL BE BRICK SEWER STRUCTURES, S.A-114, EXCEPT AS NOTED.
  8. FOR ALLOWABLE LEAKAGE TEST USE FORMULA NO. \_\_\_\_\_ SPEC. SEC. 47
  9. MANHOLE TOPS IN UNIMPROVED RIGHTS-OF-WAY TO BE 4" ABOVE FINISHED GRADE.
  10. ALL THE LOCATIONS SHOWN FOR EXISTING SUBSTRUCTURES HAVE BEEN TAKEN FROM RECORDS AND THEIR CORRECTNESS AND COMPLETENESS IS IN NO WAY GUARANTEED. IT SHALL BE THE CONTRACTOR'S RESPONSIBILITY TO LOCATE ALL UNDERGROUND LINES OF EVERY NATURE, WHETHER SHOWN HEREON OR NOT, AND PROTECT THEM FROM DAMAGE. THE CONTRACTOR SHALL BEAR THE TOTAL EXPENSE OF REPAIR TO ANY LINE DAMAGED BY ANY OPERATION IN CONNECTION WITH THE PROSECUTION OF THIS WORK.
  11. THE PRIVATE ENGINEER IS TO FURNISH THE HOUSE LATERAL DEPTHS AT THE PROPERTY LINE BELOW THE TOP OF CURB ELEVATION FOR EACH HOUSE LATERAL, ON THE GRADE SHEET.
- NOTE:  
 THE CONTRACTOR SHALL NOTIFY THE CONSTRUCTION AND STORM DRAIN DIVISION BY TELEPHONE, MADISON 9-4747, EXT. 362 AT LEAST 24 HOURS BEFORE STARTING ANY WORK UNDER THIS CONTRACT.



INDEX MAP  
 SCALE 1"=30'  
 TRACT No 23667  
 P.C. 4914

COLLECT CHARGES  
 AS INDICATED  
 L. Luster 10-2-58

BENCH MARK!  
 Spikes in conc. pmt. 2 1/2' W. of E. Main Street and 223' W. Street to the West.  
 S.Y. 3923 Elev. 33.79

Revision - S.A. 2, by SA moved sewer from 5' to 11' west of E. of St.  
 APPROVED: [Signature] 11/1/58  
 OFFICE OF COUNTY ENGINEER, REG. C.E. NO. 2132

NOTE:  
 GRADES TO WHICH THIS IMPROVEMENT IS TO BE CONSTRUCTED ARE SHOWN ON PLANS AND PROFILE GRADE POINTS FOR TOP OF CURB, CENTER LINE OF STREET, IN CENTER LINE OF ALLEYS ARE SHOWN BY CIRCLES ON PROFILES AT ALL POINTS BETWEEN DESIGNATED POINTS. THE GRADE SHALL BE ESTABLISHED SO AS TO CONFORM TO A STRAIGHT LINE BETWEEN SAID DESIGNATED POINTS.

ELEVATIONS ARE IN FEET ABOVE U.S.C.G.S. SEA LEVEL DATUM OF 1929.

THIS DRAWING AND THE DATA HEREON ARE HEREBY MADE A PART OF THE SPECIFICATIONS.

WORK SHALL BE CONSTRUCTED ACCORDING TO SPECIFICATIONS ON FILE IN THE OFFICE OF THE COUNTY ENGINEER AND SHALL BE PROSECUTED ONLY IN THE PRESENCE OF THE COUNTY ENGINEER.

BEFORE WORK CAN BE STARTED THE CONTRACTOR MUST OBTAIN A PERMIT TO EXCAVATE IN COUNTY STREETS FROM THE L.A. COUNTY ROAD DEPT. S.A. 7, AND MAKE A REPORT WITH THE COUNTY ENGINEER, ROOM 244 MAIN AMERICAN BUILDING, 333 SO. Broadway, SUFFICIENT TO COVER THE COST OF CONSTRUCTION INSPECTION AND RECORD PLANS.

APPROVAL OF THIS PLAN BY THE COUNTY OF LOS ANGELES DOES NOT CONSTITUTE A REPRESENTATION AS TO THE ACCURACY OF THE LOCATION OF OR THE EXISTENCE OR NON-EXISTENCE OF ANY UNDERGROUND UTILITY PIPE, OR STRUCTURE WITHIN THE LIMITS OF THE PROJECT. THIS NOTE APPLIES TO ALL TRENCHES.

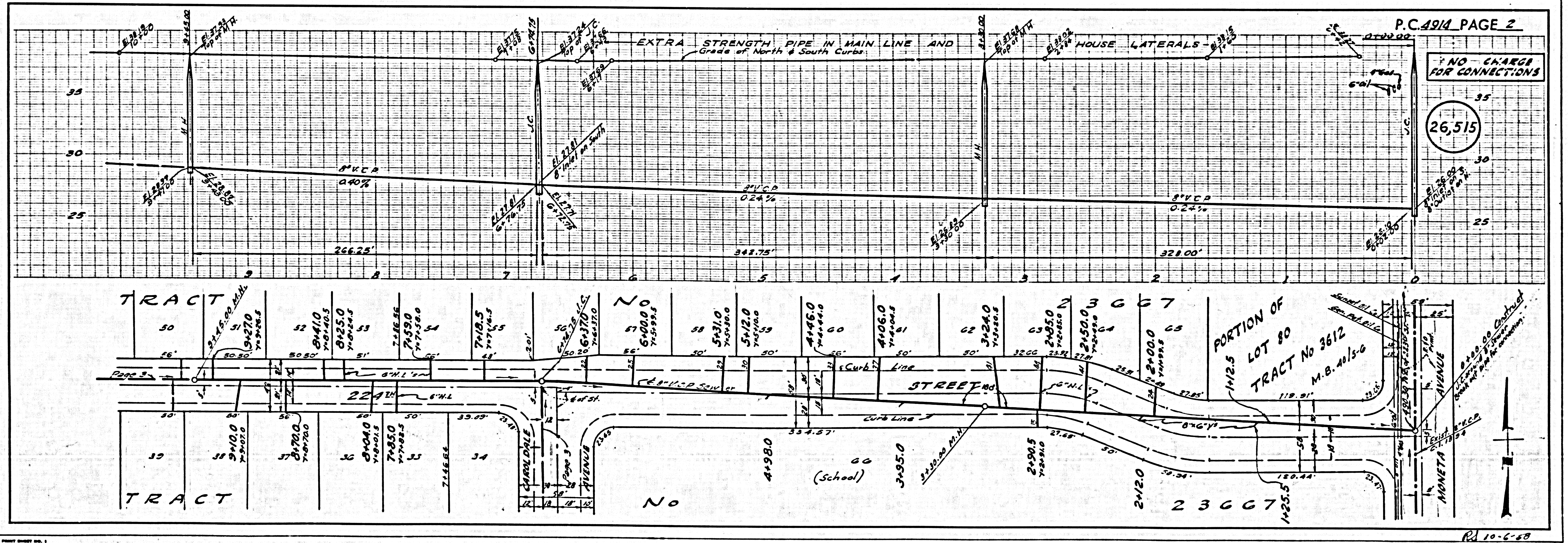
IF WORK IS TO BE DONE IN A STATE HIGHWAY, A PERMIT MUST BE OBTAINED FROM THE STATE OF CALIFORNIA, DIVISION OF HIGHWAYS, 128 SOUTH LOS ANGELES STREET.

COUNTY OF LOS ANGELES, CALIFORNIA

APPROVED, JOHN A. LAMME, COUNTY ENGINEER APPROVED, A. M. BAWEL, CHIEF ENGINEER

BY: [Signature] [Signature]  
 SANITARY ENGINEER CIVIL ENGINEER

CHECKED BY: [Signature]  
 OFFICE OF COUNTY ENGINEER, REG. C.E. NO. 74,637



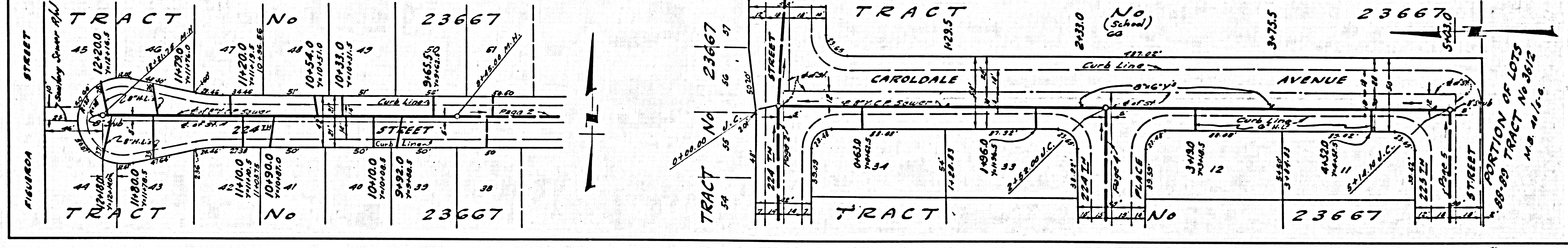
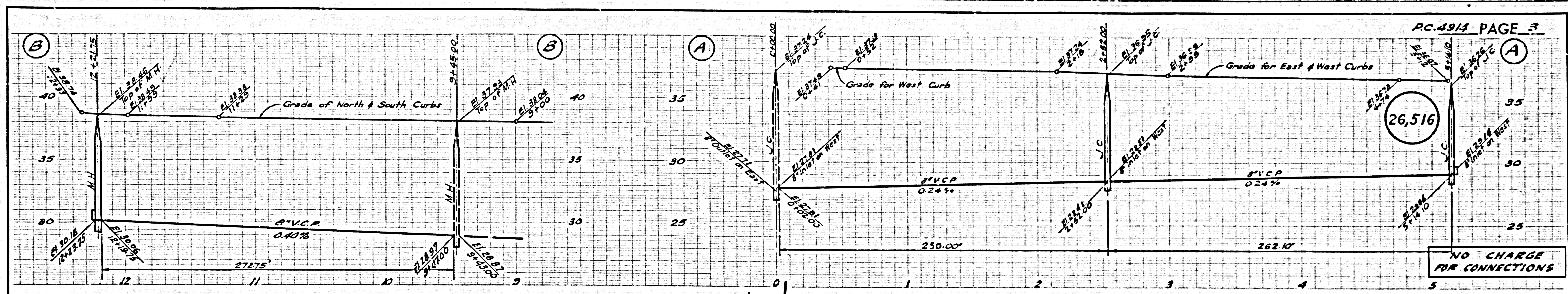
P.C. 4914 PAGE 2

NO CHARGE FOR CONNECTIONS

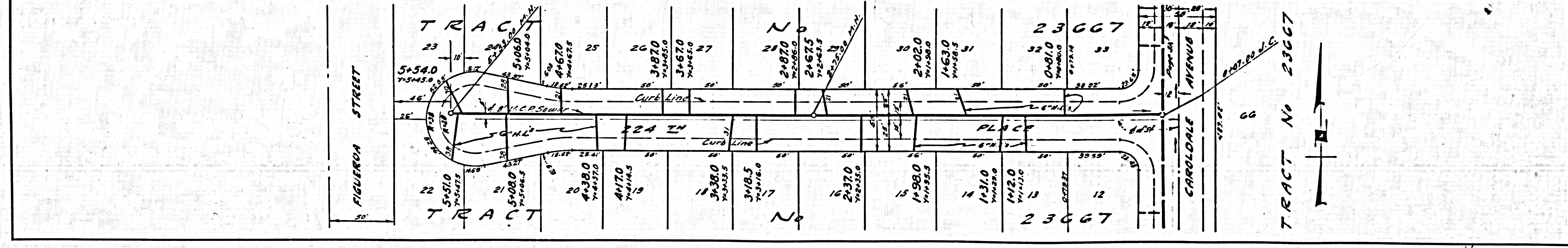
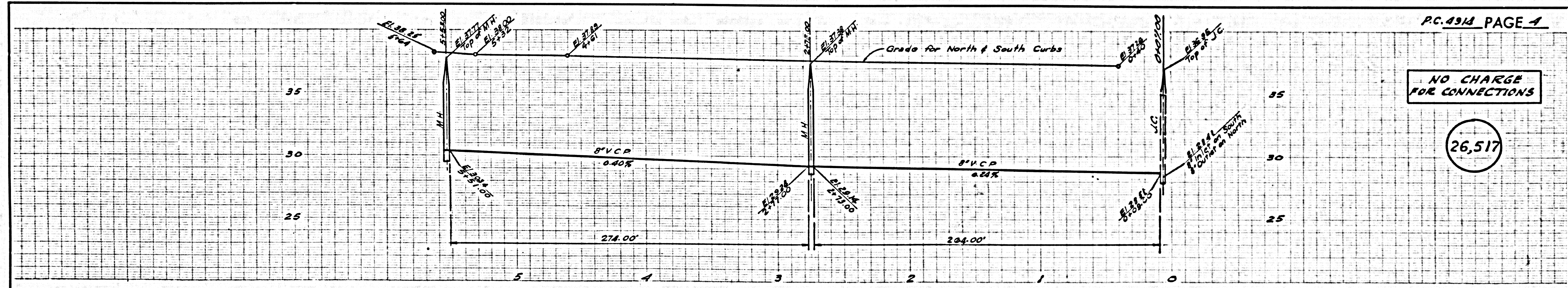
26,515

PORTION OF LOT 80 TRACT No 3612 M.B. 4015-6

RD 10-C-58



Rd 10-6-58



Rd 10-6-58

COLLECT CHARGES AS INDICATED

26,518

