

BELLFLOWER BLDG. DIST. NO. 405(S.Fe Sprgs)

PROFILE ALIGNMENT AND GRADE OF P.C. 4915
 SANITARY SEWERS PAGE 1
 TO BE CONSTRUCTED IN J.N. 0880.11

SANTA FE SPRINGS
 CIVIC CENTER

PRIVATE CONTRACT NO. 4915
 JOB NUMBER 0880.11
 W.S. 33

1 SHEET, 2 PAGES

SCALE: VERT. 1"=6' SEPT., 1958
 HORIZ. 1"=40'

PREPARED IN THE OFFICES OF

KEMMERER ENGINEERING CO., INC.
 By Wm. C. Johnson
 MET. C. E. NO. 2244

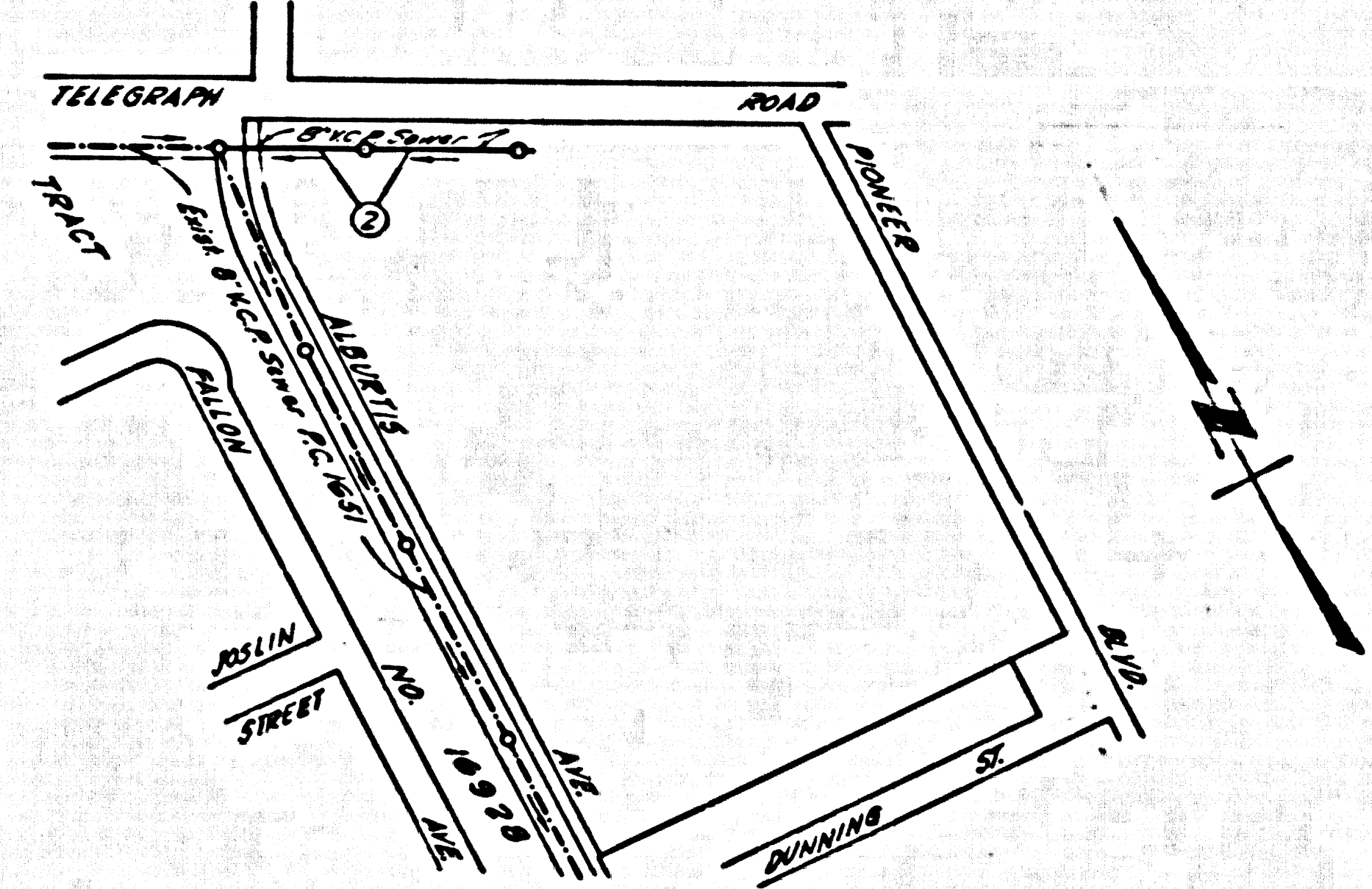
FOR LEGEND SEE PLAN NO. S-A-64

- NOTES
- PROVIDE STAKES ON THE PROPERTY LINE OR PROPERTY LINES PRODUCED AT RIGHT ANGLES TO THE SEWER LINE AT THE CENTER LINE OF EACH MANHOLE.
 - NO REPRESENTATIVE OF THE CITY ENGINEER WILL SURVEY OR LAYOUT ANY PORTION OF THE WORK.
 - THE OWNER OR HIS AUTHORIZED REPRESENTATIVE SHALL FURNISH THE CITY ENGINEER WITH GRADE SHEETS AND STATION FOR ALL HOUSE LATERALS AND BRANCHES AND SHALL PROVIDE STAKES FOR THESE AT THEIR PROPER LOCATIONS WITH BRANCH-ING PLAINLY MARKED. ANY CHANGE IN LOCATION SHALL BE REQUESTED IN WRITING BY THE OWNER OR HIS REPRESENTATIVE.
 - NO REVISIONS SHALL BE MADE IN THESE PLANS WITHOUT THE APPROVAL OF THE CITY ENGINEER.
 - USE STANDARD MANHOLE FRAMES AND COVERS, S-A-117.
 - USE STANDARD STRENGTH PIPE.
 - USE CEMENT MORTAR, "WEDGE-LOCK", OR "SPREAD-SEAL" FOR ALL WETTED CLAY PIPE JOINTS, PER SPEC. SEC. 308 & 48.
 - RESURFACE ALL TRENCH WITHIN PAVED AREA TO MEET CITY DEPARTMENT SPECIFICATIONS OR CALIF. STATE HIGHWAY DEPT. REQUIREMENTS IN ACCORDANCE WITH PERMITS.
 - ENCASE FOUR FEET OF SEWER AT POINTS OF INTERFERENCE WITH POLES, S-A-172-CASE II.
 - ALL STRUCTURES SHALL BE BRICK SEWER STRUCTURES, S-A-104.
 - FOR ALLOWABLE SLOPES THAT USE FORMULA NO. 1 SPEC., SEC. 34.
 - MANHOLE POLES IN UNIMPROVED RIGHTS-OF-WAY TO BE LEVEL WITH FINISHED GRADE.

NOTE:
 THE CONTRACTOR SHALL NOTIFY THE CONSTRUCTION AND STORM DRAIN DIVISION BY TELEPHONE, MADISON 9-4747, EXT. 362, AT LEAST 24 HOURS BEFORE STARTING ANY WORK UNDER THIS CONTRACT.

BM - 51.148 L.A. Co. SUR. MON. WITH
 GROSS CAP ON TELEGRAPH RD. 10' E. &
 11' S. OF 1st AV. N.E. Co. SUR. PRECISE ELEV.
 152.197 Road Line & Adj. 1955.

NO CHARGE FOR
 CONNECTIONS
 E. Awards 10-14-58



INDEX MAP
 P.C. 4915 Scale 1"=300'
 J.N. 0880.11

NOTES

GRADES TO WHICH THIS IMPROVEMENT IS TO BE CONSTRUCTED ARE SHOWN ON PLANS AND PROFILES. GRADE POINTS FOR TOP OF CURB, CENTER LINE OF STREET, OR CENTER LINE OF ALLEYS ARE SHOWN BY CIRCLES ON PROFILES. AT ALL POINTS BETWEEN DESIGNATED POINTS THE GRADE SHALL BE ESTABLISHED SO AS TO CONFORM TO A STRAIGHT LINE DRAWN BETWEEN SAID DESIGNATED POINTS.

ELEVATIONS ARE IN FEET ABOVE U.S.C. & G.S. SEA LEVEL DATUM OF 1929.

THIS DRAWING AND THE DATA THEREON ARE HEREBY MADE A PART OF THE SPECIFICATIONS. THE CONTRACTOR SHALL BE RESPONSIBLE FOR OBTAINING ALL NECESSARY PERMITS FROM THE CITY ENGINEER AND SHALL BE PROSECUTED ONLY IN THE PRESENCE OF THE CITY ENGINEER.

BEFORE WORK CAN BE STARTED, THE CONTRACTOR MUST OBTAIN A PERMIT TO EXCAVATE IN STREETS FROM THE L.A. COUNTY ROAD DEPT., DIST. NO. 4 AND MAKE A DEPOSIT WITH THE CITY ENGINEER \$1000.00 PER AMERICAN SAFETY AND 50.00 BROADWAY SUPPLY TO COVER THE COST OF CONSTRUCTION INSPECTION AND RECORD PLANS.

APPROVAL OF THIS PLAN BY THE CITY ENGINEER OR HIS REPRESENTATIVE DOES NOT CONSTITUTE A REPRESENTATION AS TO THE ACCURACY OF THE LOCATION OF OR THE EXISTENCE OR NON-EXISTENCE OF ANY UNDERGROUND UTILITY PIPE, OR STRUCTURE WITHIN THE LIMITS OF THE PROJECT. THIS NOTE APPLIES TO ALL GRADES.

IF WORK IS TO BE DONE IN A STATE HIGHWAY, A PERMIT MUST BE OBTAINED FROM THE STATE OF CALIFORNIA, DIVISION OF HIGHWAYS, 120 SOUTH SPRING STREET.

CITY OF SANTA FE SPRINGS, CALIFORNIA

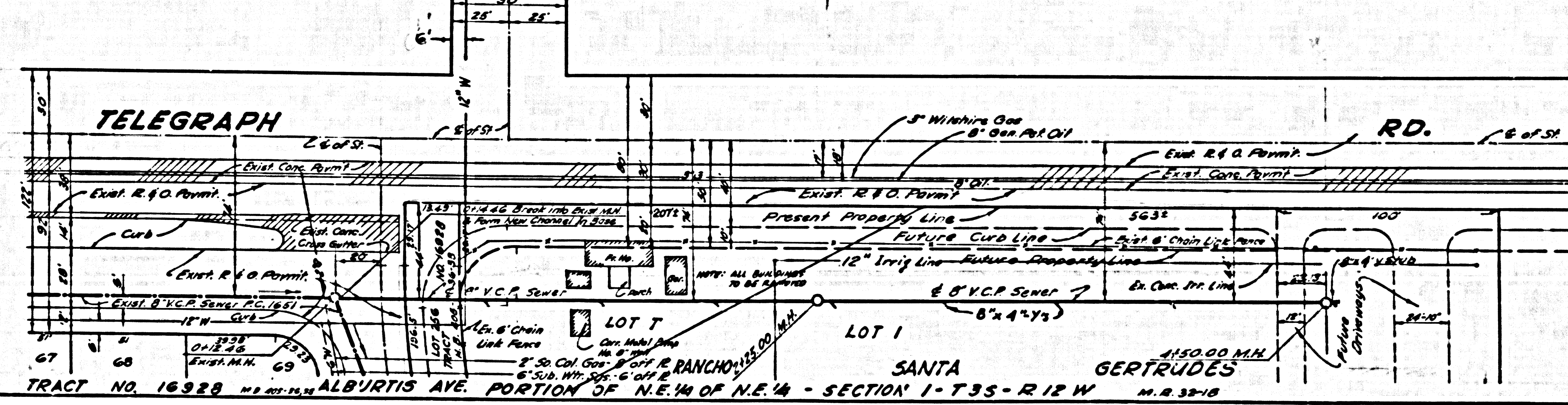
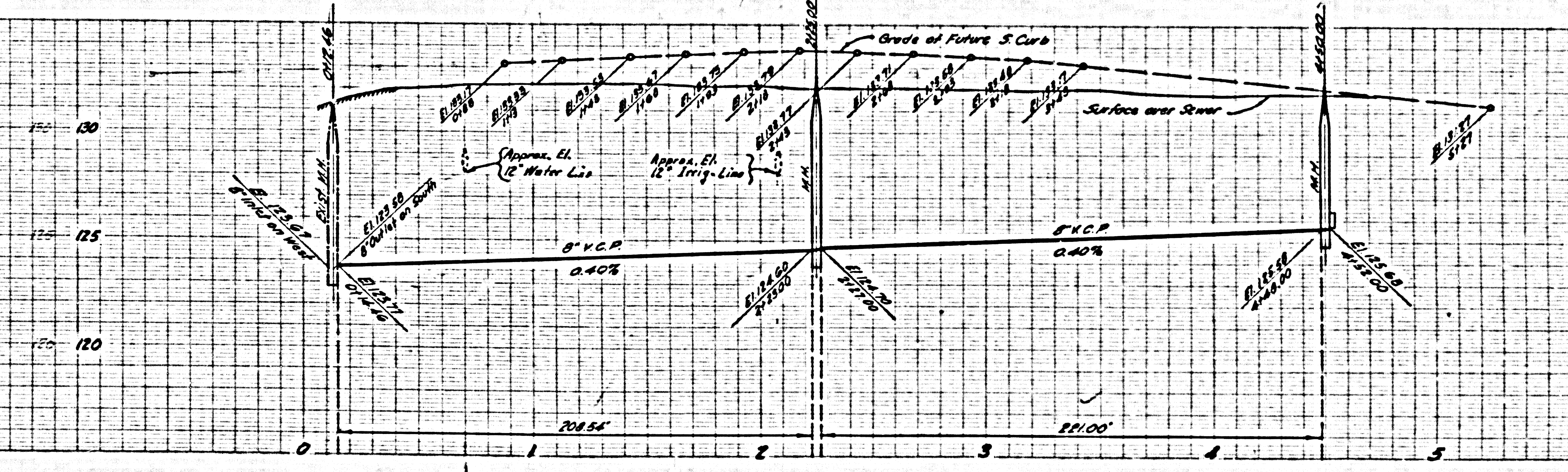
APPROVED, JOHN A. LAMBE, CITY ENGINEER APPROVED, A. M. BAYNE, CHIEF ENGINEER

BY Wm. C. Johnson BY Wm. C. Johnson
 SANITATION ENGINEER OFFICE ENGINEER

CHECKED BY W. C. Johnson 11-7-58
 OFFICE OF CITY ENGINEER, MET. C. E. NO. 3409

SUBMITTED BY: Wm. C. Johnson 10-16-58
 SANITATION ENGINEER, CERRITOS REGIONAL ENGINEER, R.C.S. NO. 1071

P.C. 4915 PAGE 2
 J.N. 0880.11
 NO CHARGE FOR
 CONNECTIONS



TRACT NO. 16928 ALBERTIS AVE. PORTION OF N.E. 1/4 OF N.E. 1/4 - SECTION 1-T35-R12W
 SANTA GERTRUDES
 4150.00 MH. 11.2.33-18

Rel. 10-17-58