

TEMPLE CITY
PUEENTE BLDG. DIST. NO. 2

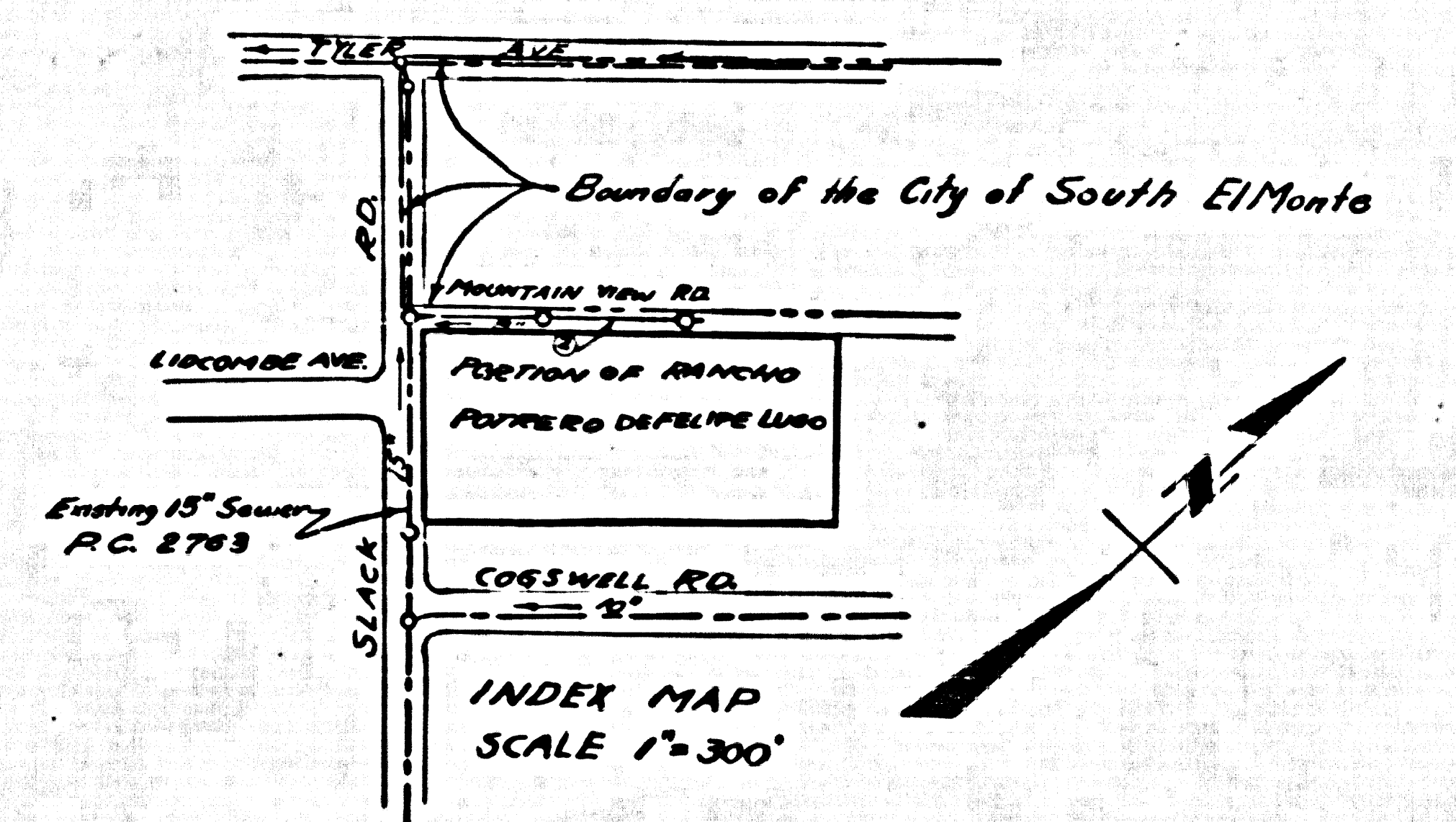
PROFILE ALIGNMENT AND GRADE OF **P.C. 4916**
SANITARY SEWERS PAGE 1
 TO BE CONSTRUCTED IN
MOUNTAIN VIEW ROAD
 FROM SLACK ROAD TO 425 FEET NORTHERLY THEREOF

PRIVATE CONTRACT NO. 4916
 W.S. 37
 1 SHEET, 2 PAGES
 SCALE: VERT. 1"=6' HORIZ. 1"=30' **SEPT. 1958**
 PREPARED IN THE OFFICES OF

By Carl F. Lavin
 V. REG. C. E. NO. 1358
 FOR LEGEND SEE PLAN NO. S-A-64

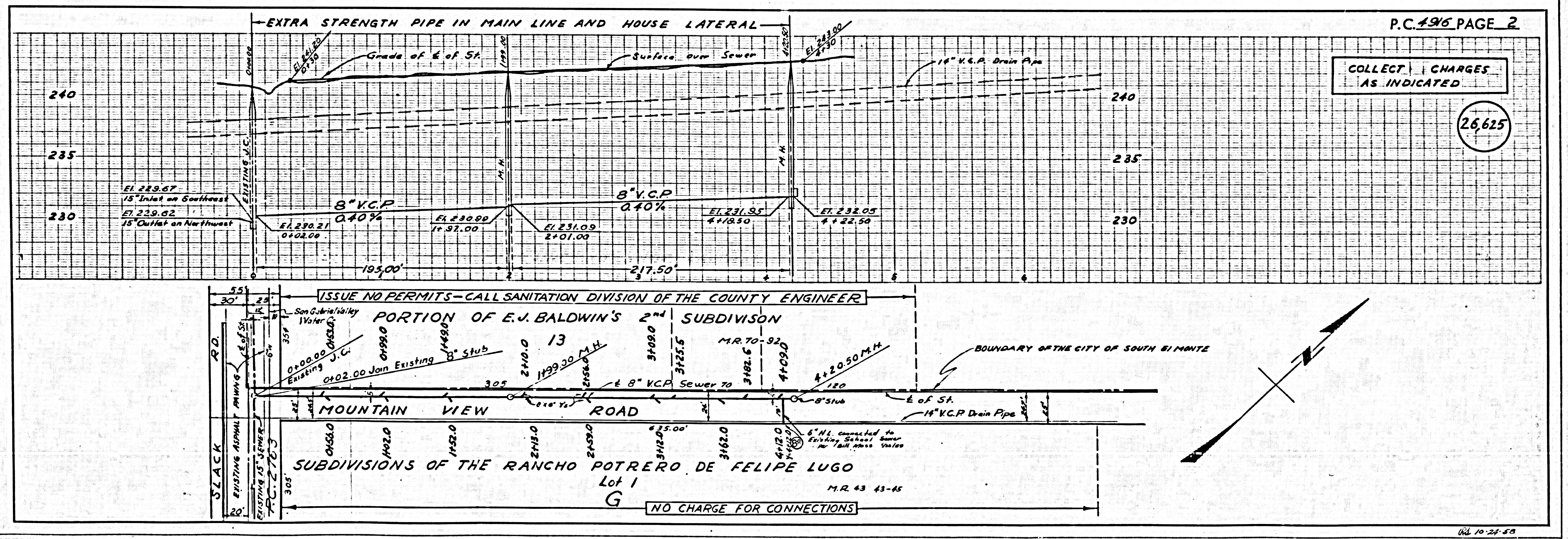
BMME 492 Elev. 247.591 C.S.F.B. 1927 Pg. 93
 Cogswell Rd & Thierres Ave. N.W. Cor.
 Bt. Spk. in Cb. 5 N of N end C.R.

- NOTES:
1. PROVIDE STAKES ON THE PROPERTY LINE OR PROPERTY LINES PRODUCED AT RIGHT ANGLES TO THE SEWER LINE AT THE CENTER LINE OF EACH MANHOLE.
 2. NO REPRESENTATIVE OF THE COUNTY ENGINEER WILL IMPROVE OR LAY OUT ANY PORTION OF THE WORK.
 3. THE OWNER OR HIS AUTHORIZED REPRESENTATIVE SHALL FURNISH THE COUNTY ENGINEER WITH GRADE SHEETS AND STATIONING FOR ALL HOUSE LATERALS AND Y BRANCHES AND SHALL PROVIDE STAKES FOR THEM AT THEIR PROPER LOCATIONS WITH STATIONING PLAINLY MARKED. ANY CHANGE IN LOCATION SHALL BE REQUESTED IN WRITING BY THE OWNER OR HIS REPRESENTATIVE.
 4. THE PRIVATE ENGINEER SHALL FURNISH THE HOUSE LATERAL DEPTH AT THE PROPERTY LINE BELOW THE TOP OF CURB ELEVATION FOR EACH HOUSE LATERAL ON THE GRADE SHEET.
 5. NO REVISIONS SHALL BE MADE IN THESE PLANS WITHOUT THE APPROVAL OF THE COUNTY ENGINEER.
 6. USE STANDARD MANHOLE FRAMES AND COVERS, S-117.
 7. USE STANDARD STRENGTH PIPE EXCEPT AS NOTED.
 8. USE JAWNTY COPING OR "WEDGE LOCK" OR "SPRIB-SEAL" FOR ALL V.C.P. JOINTS PER S.P.C.S., SECT. 36 & 40.
 9. REINFORCE ALL TRENCH WITHIN PAVED AREA TO MEET L.A. COUNTY ROAD DEPT. OR CALIF. STATE HIGHWAY REQUIREMENTS IN ACCORDANCE WITH PERMITS.
 10. INCASE FOUR FEET OF SEWER AT POINTS OF INTERFERENCE WITH POLES, CASE III, S-172.
 11. HOUSE LATERALS TO BE CONSTRUCTED WITH INVERTS AT PROPERTY LINE 0 FEET BELOW GRADE OF 6 OF STREET.
 12. ALL STRUCTURES SHALL BE BRICK SEWER STRUCTURES, S-104.
 13. FOR ALLOWABLE LEAKAGE TEST USE FORMULA NO. 2 S.P.C.S., SEC. 34.
 14. MANHOLE TOPS IN UNIMPROVED RIGHTS-OF-WAY TO BE 6" V.C.P. UNFINISHED GRADE.
 15. THE CONTRACTOR SHALL NOTIFY THE CONSTRUCTION & STORM DRAIN DIVISION BY TELEPHONE, MARSHON 9-46, EXT. 342, AT LEAST TWENTY-FOUR HOURS BEFORE STARTING ANY WORK UNDER THIS CONTRACT.



COLLECT CHARGES
 AS INDICATED
B.M. Padgett 10-29-58

NOTES:
 GRADES TO WHICH THIS IMPROVEMENT IS TO BE CONSTRUCTED ARE SHOWN ON PLANS AND PROFILE. GRADE POINTS FOR TOP OF CURB, CENTER LINE OF STREETS, OR CENTER LINE OF ALLEYS ARE SHOWN BY CIRCLES ON PROFILES. AT ALL POINTS BETWEEN DESIGNATED POINTS THE GRADE SHALL BE ESTABLISHED SO AS TO COME TO A STRAIGHT LINE BETWEEN SAID DESIGNATED POINTS.
 ELEVATIONS ARE IN FEET ABOVE U.S.C. & G.S. SEA LEVEL DATUM OF 1929.
 THIS DRAWING AND THE DATA HEREON ARE HEREBY MADE A PART OF THE SPECIFICATIONS.
 WORK SHALL BE CONSTRUCTED ACCORDING TO SPECIFICATIONS ON FILE IN THE OFFICE OF THE COUNTY ENGINEER AND SHALL BE INSPECTED ONLY IN THE PRESENCE OF THE COUNTY ENGINEER.
 BEFORE WORK CAN BE STARTED, THE CONTRACTOR MUST OBTAIN A PERMIT TO EXCAVATE IN COUNTY RIGHTS FROM THE L.A. COUNTY ROAD DEPT., DISTRICT OFFICE NO. 1 AND MAKE A DEPOSIT WITH THE COUNTY ENGINEER, ROOM 324 PINE AVENUE BUILDING, 323 SO. BRADLEY AVENUE TO COVER THE COST OF CONSTRUCTION INSPECTION AND RECORD PLANS.
 APPROVAL OF THIS PLAN BY THE COUNTY OF LOS ANGELES DOES NOT CONSTITUTE A REPRESENTATION AS TO THE ACCURACY OF THE LOCATION OF OR THE EXISTENCE OR NON-EXISTENCE OF ANY UNDERGROUND UTILITY PIPE, OR STRUCTURE WITHIN THE LIMITS OF THE PROJECT THE NOTE APPLIES TO ALL PAGES.
 IF WORK IS TO BE DONE ON A STATE HIGHWAY, A PERMIT MUST BE OBTAINED FROM THE STATE OF CALIFORNIA, DIVISION OF HIGHWAYS, 120 SOUTH BRADLEY STREET.
COUNTY OF LOS ANGELES, CALIFORNIA
 APPROVED, JOHN A. LAMBE, COUNTY ENGINEER
 APPROVED, A. M. BROWN, CHIEF ENGINEER
 CO. SAN. DIST. NO. 15
 BY C. F. Lavin OFFICE ENGINEER
 CHECKED BY S. C. Dink 10-28-58
 OFFICE OF COUNTY ENGINEER, REG. C. E. NO. 3406
 SUBMITTED N. P. Bravender
 SAN GABRIEL REGIONAL ENGINEER



COLLECT CHARGES
 AS INDICATED
 26,625

P.C. 4916 PAGE 2

10-28-58

PUEENTE BLDG. DIST. NO. 2

PROFILE ALIGNMENT AND GRADE OF P.C. 4917
SANITARY SEWERS PAGE 1

TRACT NO. 24576 26,626

PRIVATE CONTRACT NO. 4917

W.S. 38

3 SHEETS, 2 PAGES

SCALE: 1" = 40' SEP. 1958

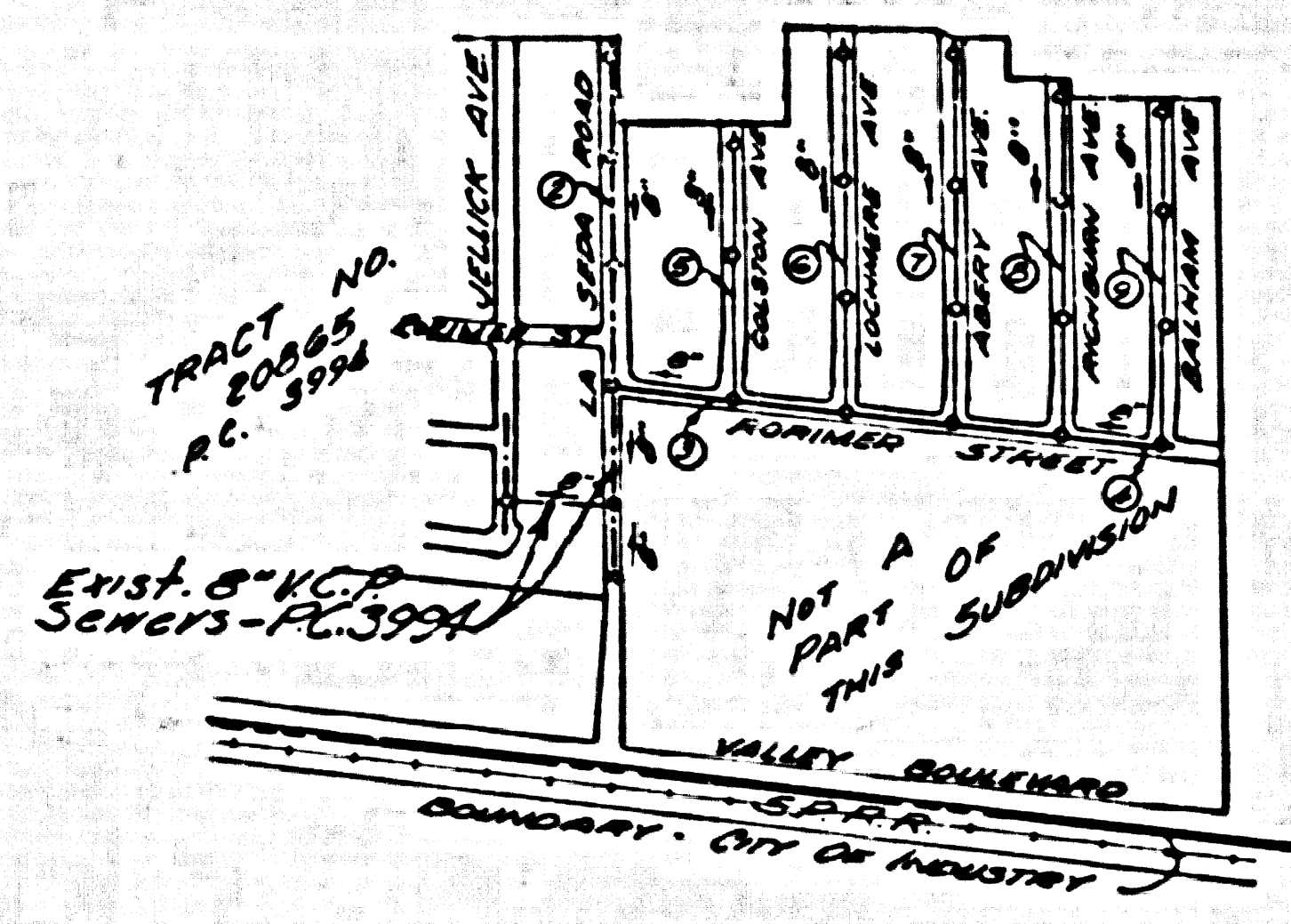
PREPARED IN THE OFFICES OF
L. FREDERICK PACK
140 N. MADISON
Covina, Calif.

By: *L. Frederick Pack*
REG. C. E. NO. 7225

FOR LEGEND SEE PLAN NO. S-A-64

- NOTES
- PROVIDE STAKES ON THE PROPERTY LINE OR PROPERTY LINES PRODUCED AT RIGHT ANGLES TO THE SEWER LINE AT THE CENTER LINE OF EACH MANHOLE.
 - NO REPRESENTATIVE OF THE COUNTY ENGINEER WILL SURVEY OR LAY OUT ANY PORTION OF THE WORK.
 - THE OWNER OR HIS AUTHORIZED REPRESENTATIVE SHALL FURNISH THE COUNTY ENGINEER WITH GRADE SHEETS AND STATIONING FOR ALL HOUSE LATERALS AND T-BRANCHES AND SHALL PROVIDE STAKES FOR THEM AT THEIR PROPER LOCATIONS WITH DRAINING PLASTER BAYETS. ANY CHANGE IN LOCATION SHALL BE REQUESTED IN WRITING BY THE OWNER OR HIS REPRESENTATIVE.
 - THE PRIVATE ENGINEER SHALL FURNISH THE HOUSE LATERAL DEPTH AT THE PROPERTY LINE BELOW THE TOP OF CURB ELEVATION FOR EACH HOUSE LATERAL ON 1"=40' GRADE SHEET.
 - NO REVISIONS SHALL BE MADE IN THESE PLANS WITHOUT THE APPROVAL OF THE COUNTY ENGINEER.
 - USE STANDARD MANHOLE FRAMES AND COVERS, 8-17", EXCEPT AS NOTED.
 - USE STANDARD STRENGTH PIPE EXCEPT AS NOTED.
 - USE COUNTY HORIZONTAL OR "BENCH-MARK" FOR ALL V.C.P. JOINTS PER SPEC'S, SECT. 36 & 37.
 - REPLACE ALL BRANCHES WITHIN PAVED AREA TO MEET L.A. COUNTY ROAD DEPT. OR CALIF. STATE HIGHWAY DEPT. REQUIREMENTS IN ACCORDANCE WITH PERMITS.
 - ENCASE FOUR FEET OF SEWER AT POINTS OF INTERFERENCE 1/4" POLY. CASE III, 8-17".
 - HOUSE LATERALS TO BE CONSTRUCTED WITH INVERTS AT PROPERTY LINE 6" FEET BELOW CURB GRADE EXCEPT AS NOTED.
 - ALL STRUCTURES SHALL BE BRICK SEWER STRUCTURES, 8-10", EXCEPT AS NOTED.
 - FOR ALLOWABLE LEAKAGE TEST USE FORMULA NO. 1, SPEC'S, SEC. 34.
 - MANHOLE TOPS IN UNIMPROVED RIGHTS-OF-WAY TO BE SIX INCHES ABOVE FINISHED GRADE.
 - THE CONTRACTOR SHALL NOTIFY THE CONSTRUCTION & STORM DRAIN DIVISION BY TELEPHONE, MADISON 9-4747, EXT. 361, AT LEAST TWENTY-FOUR HOURS BEFORE STARTING ANY WORK UNDER THIS CONTRACT.

CONNECTION CHARGES AS INDICATED
71. 27/2/58 10-9-58



INDEX MAP
TRACT NO. 24576
R.C. 4917
SCALE 1"=600'

BENCH MARK
Monument in N.W. Corner of B.M.
11-103-1052 ME 45' 125' N of E
of Valley Blvd. & La Sade Rd.
E.B. 125' by 52' 125' ADJ.
Elev. 418.908

NOTE:
GRADE TO WHICH THIS IMPROVEMENT IS TO BE CONSTRUCTED ARE SHOWN ON PLANS AND PROFILES. GRADE POINTS FOR TOP OF CURB, CENTER LINE OF STREET, OR CENTER LINE OF ALLEY ARE SHOWN BY CIRCLES OR SQUARES AT ALL POINTS BETWEEN MANHOLE POINTS. THE GRADE SHALL BE ESTABLISHED SO AS TO CONFORM TO A STRAIGHT LINE DRAWN BETWEEN SAID MANHOLE POINTS.
ELEVATIONS ARE IN FEET ABOVE U.S.C. & G.S. MEAN SEA LEVEL DATUM OF 1929.
THIS DRAWING AND THE DATA THEREON ARE HEREBY MADE A PART OF THE SPECIFICATIONS.
WORK SHALL BE CONSTRUCTED ACCORDING TO SPECIFICATIONS ON FILE IN THE OFFICE OF THE COUNTY ENGINEER AND SHALL BE PROSECUTED ONLY IN THE PRESENCE OF THE COUNTY ENGINEER.
BEFORE WORK CAN BE STARTED, THE CONTRACTOR MUST OBTAIN A PERMIT TO EXCAVATE IN THE COUNTY ENGINEER'S OFFICE FROM THE L.A. COUNTY ROAD DEPT., STREET OFFICE NO. 1, AND MAKE A REPORT WITH THE COUNTY ENGINEER, ROOM 334 PAV. BLDG. BUILDING, 338 1/2 BROADWAY, SUFFICIENT TO COVER THE COST OF CONSTRUCTION INSPECTION AND RECORD PLANS.
APPROVAL OF THIS PLAN BY THE COUNTY OF LOS ANGELES DOES NOT CONSTITUTE A REPRESENTATION AS TO THE ACCURACY OF THE LOCATION OR OF THE EXISTENCE OR NON-EXISTENCE OF ANY UNDERGROUND UTILITY PIPE, OR STRUCTURE WITHIN THE LIMITS OF THIS PROJECT. THIS NOTE APPLIES TO ALL PAGES.
IF WORK IS TO BE DONE IN A STATE HIGHWAY, A PERMIT MUST BE OBTAINED FROM THE STATE OF CALIFORNIA, DIVISION OF HIGHWAYS, 120 SOUTH BRIDGE STREET.

COUNTY OF LOS ANGELES, CALIFORNIA

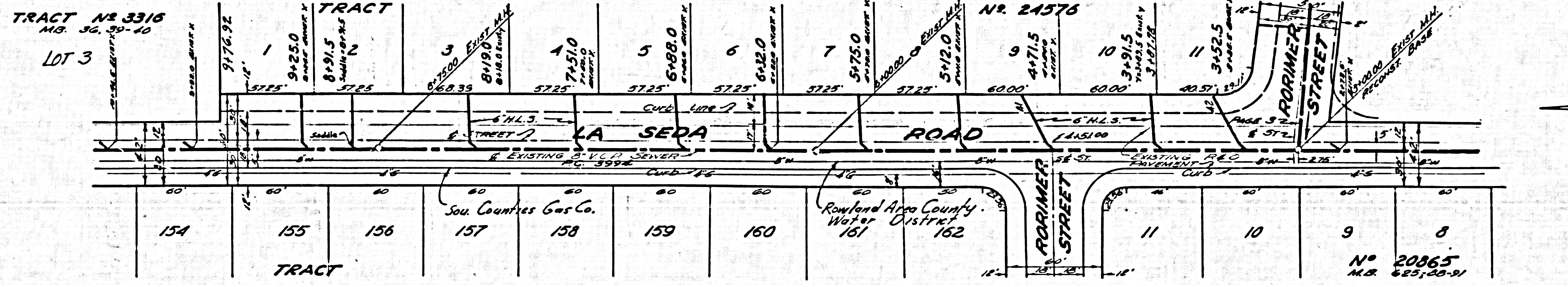
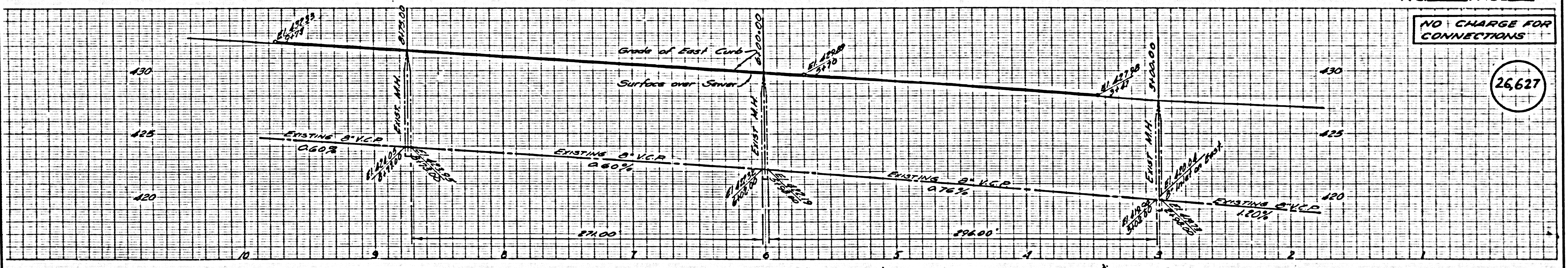
APPROVED, JOHN A. LAMBE, COUNTY ENGINEER
APPROVED, A. M. BAWN, CHIEF ENGINEER
By: *L. F. Pack* (Seal)
By: *A. M. Bawn* (Seal)
CHECKED BY: *J. K. White*
OFFICE OF COUNTY ENGINEER, REG. C. E. NO. 3561

7.27.9-30-58

P.C. 4917 PAGE 2

NO CHARGE FOR CONNECTIONS

26,627

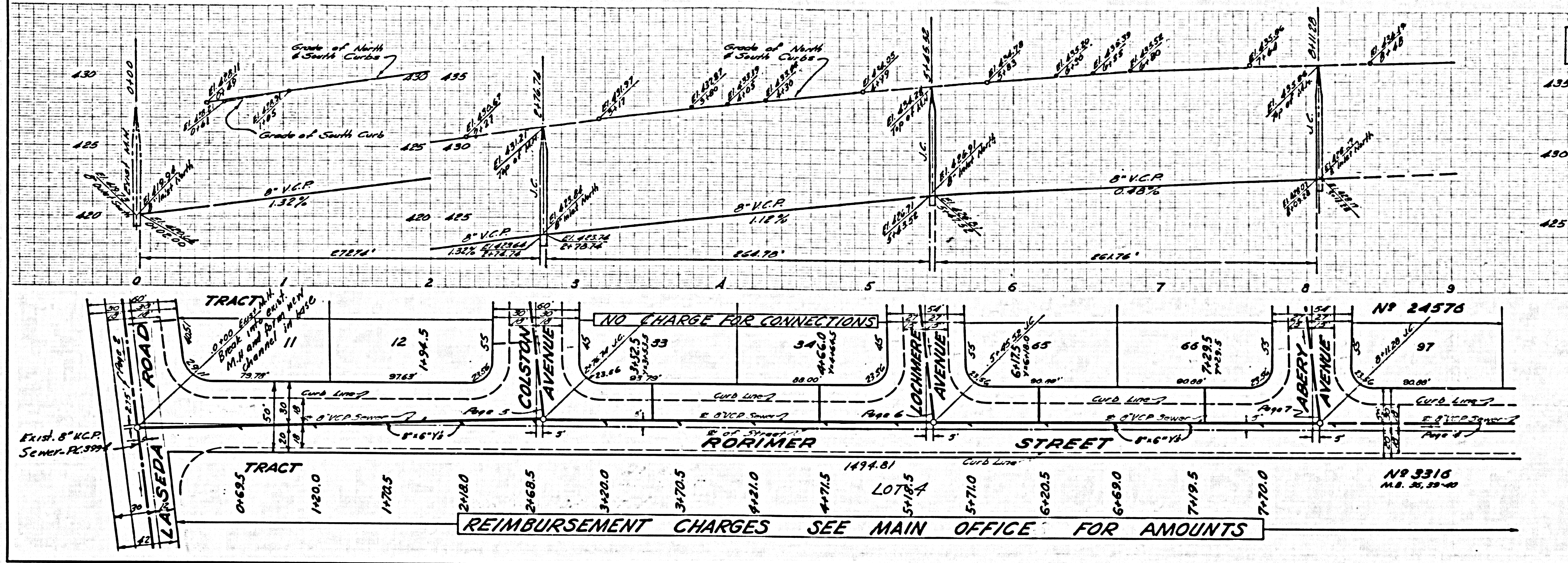


NO 20865
M.B. 625; 00-91

7.27.9-30-58

CONNECTION CHARGES AS INDICATED

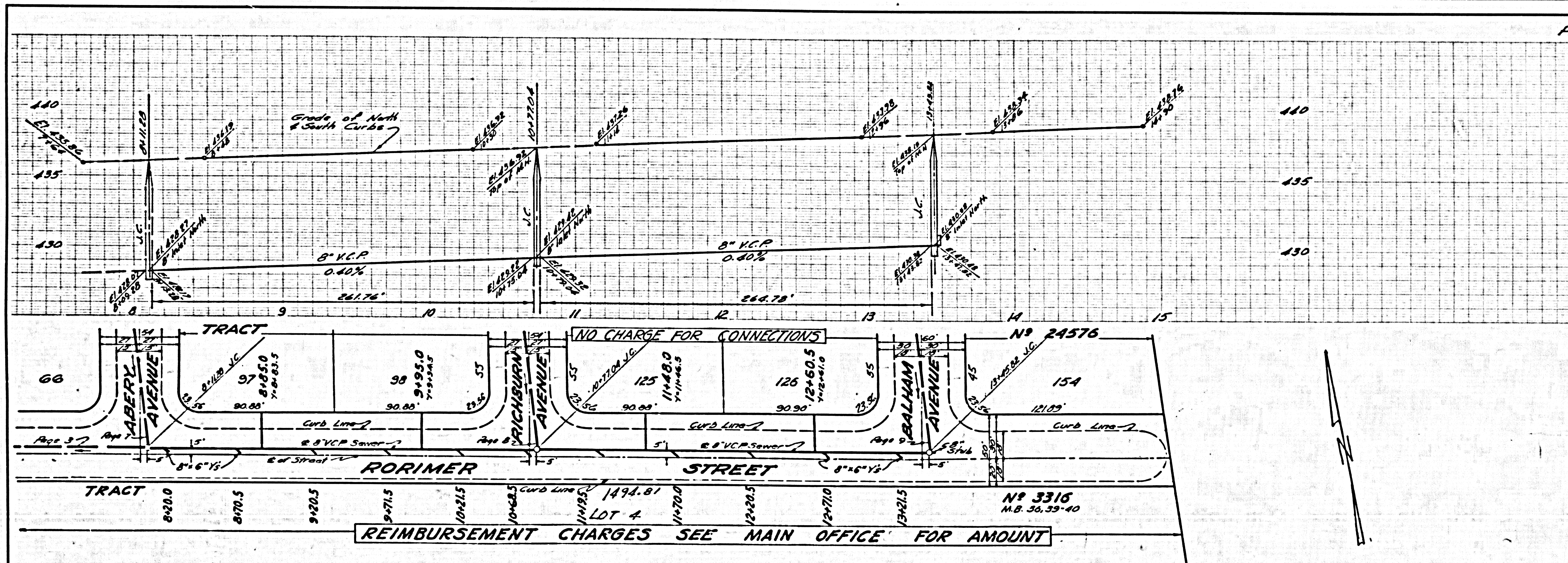
26,628



7.29.51

CONNECTION CHARGES AS INDICATED

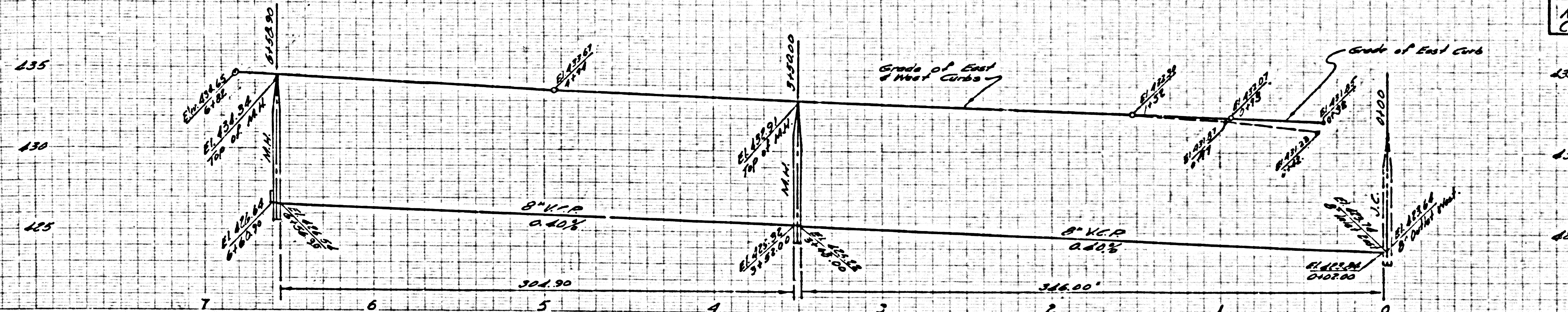
26,629



7.29.51

NO CHARGE FOR CONNECTIONS

26,630

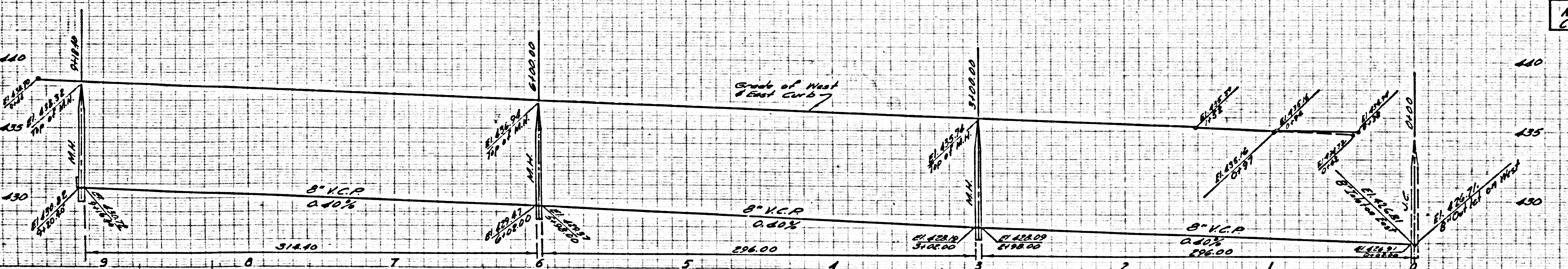


TRACT												No. 24576	
22	23	24	25	26	27	28	29	30	31	32	33		
6+790 7+1210	6+145 7+1150	5+635 7+1110	5+000 7+1170	4+515 7+120.6	3+86.0 7+1175	3+40.5 7+1115	3+200.0 7+1175	2+23.0 7+1115	3+500 7+1175	1+170 7+1170	1+170 7+1170		
COLSTON AVENUE													
21	20	19	18	17	16	15	14	13	12	11	10		
6+53.0 7+1115	6+14.5 7+1115	5+51.0 7+1110	4+93.0 7+1110	4+25.0 7+1115	3+77.5 7+1115	3+11.5 7+1115	2+50.0 7+1110	1+55.5 7+1115	1+070 7+1110	0+54.0 7+1110	0+54.0 7+1110		
TRACT												No. 24576	

2.27. 9-30-57

NO CHARGE FOR CONNECTIONS

26,631



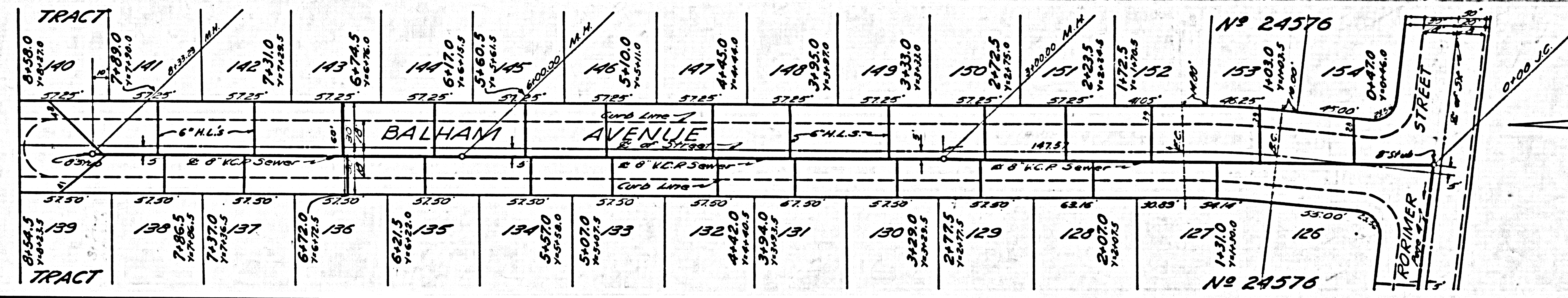
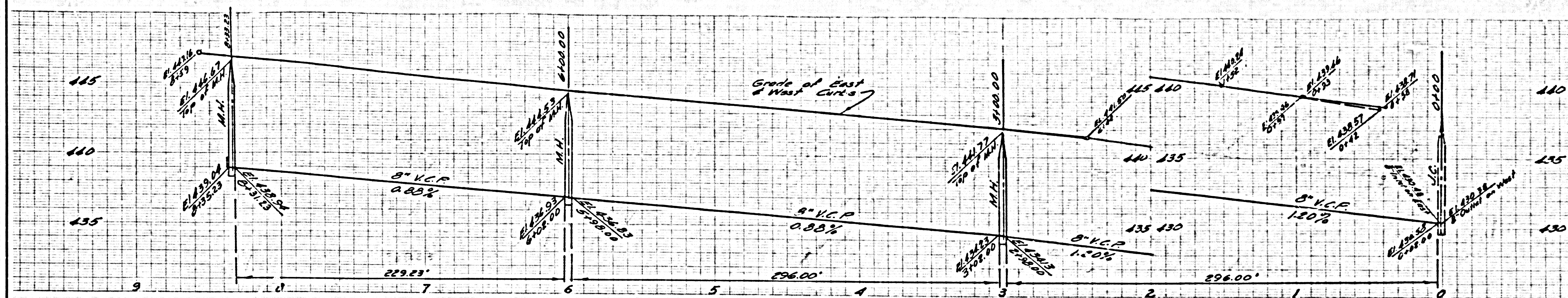
TRACT												No. 24576			
50	51	52	53	54	55	56	57	58	59	60	61	62	63	64	65
9+38.0 7+1110	8+73.0 7+1170	8+23.5 7+1115	7+59.0 7+1175	7+03.0 7+1170	6+38.5 7+1110	5+93.0 7+1115	5+23.0 7+1110	4+72.0 7+1170	4+08.0 7+1170	3+63.0 7+1110	2+92.0 7+1115	2+30.0 7+1110	1+78.5 7+1110	1+22.5 7+1110	0+54.0 7+1110
LOCHMERE AVENUE															
49	48	47	46	45	44	43	42	41	40	39	38	37	36	35	34
9+38.5 7+1110	8+75.0 7+1175	8+25.5 7+1120	7+60.5 7+1110	7+0.5 7+1110	6+46.0 7+1110	5+96.5 7+1110	5+31.5 7+1110	4+82.0 7+1110	4+17.0 7+1170	3+73.0 7+1110	3+08.0 7+1110	2+54.0 7+1115	1+89.0 7+1110	1+39.0 7+1115	0+54.0 7+1110
TRACT												No. 24576			

2.27. 9-30-57

26,631

NO CHARGE FOR CONNECTIONS

26,634



5.C. 4917 (2)