

INDEX MAP
TRACT No. 21736
P.C. 4919
SCALE 1"=300'

B.M. No. 40-13 Elev. 599.86 C.S. P.A. 1261 pg. 20
Citrus Ave. and Base Line Rd. 4/ intersection
in L.A. Co. Hand Hole 4/ intersection

SAN DIMAS BLDG. DIST. NO. 10

- NOTES
1. PROVIDE STAKES ON THE PROPERTY LINE OR PROPERTY LINES FROM C.S. P.A. AT RIGHT ANGLES TO THE SEWER LINE AT THE CENTER LINE OF EACH MANHOLE.
 2. NO REPRESENTATIVE OF THE COUNTY ENGINEER WILL SURVEY OR LAY OUT ANY PORTION OF THE WORK.
 3. THE OWNER OR HIS AUTHORIZED REPRESENTATIVE SHALL FURNISH THE COUNTY ENGINEER WITH GRADE SHEETS AND STATIONING FOR ALL HOUSE LATERALS AND TRENCHES AND SHALL PROVIDE STAKES FOR THEM AT THEIR PROPER LOCATIONS WITH STATIONING PLAINLY MARKED. ANY CHANGE IN LOCATION SHALL BE REQUESTED IN WRITING BY THE OWNER OR HIS REPRESENTATIVE.
 4. THE PRIVATE ENGINEER SHALL FURNISH THE HOUSE LATERAL SHEET AT THE PROPERTY LINE SHOWING THE TOP OF CURB ELEVATION FOR EACH HOUSE LATERAL ON THE GRADE SHEET.
 5. NO REVISIONS SHALL BE MADE IN THESE PLANS WITHOUT THE APPROVAL OF THE COUNTY ENGINEER.
 6. USE STANDARD MANHOLE FRAMES AND COVERS, S-117.
 7. USE STANDARD SPOUNHOLE PIPE.
 8. USE CEMENT MORTAR OR "WOOD-BLOCK" ("SPREAD-BEAL") FOR ALL V.C.P. JOINTS PER SPEC'S, SECT. 26 & 6.
 9. REINFORCE ALL TRENCH WITHIN PAVED AREA TO MEET L.A. COUNTY ROAD DEPT. OR CALIF. STATE HIGHWAY REQUIREMENTS IN ACCORDANCE WITH PERMITS.
 10. INCASE THE TOP OF SEWER AT POINTS OF INTERFERENCE WITH POLES, CASE NO. S-172.
 11. HOUSE LATERALS TO BE CONSTRUCTED WITH INVERTS AT PROPERTY LINE $\frac{1}{8}$ FEET BELOW CURB GRADE.
 12. ALL STRUCTURES SHALL BE BUILT PER SPECIFICATIONS, S-184.
 13. 7% ALLOWABLE LEAKAGE TEST USE FORMULA NO. 1, SPEC'S, SEC. 54.
 14. MANHOLE TO BE IN UNIMPROVED RIGHTS-OF-WAY TO BE SIX INCHES ABOVE FINISHED GRADE.
 15. THE CONTRACTOR SHALL NOTIFY THE CONSTRUCTION & STORM DRAIN DIVISION BY TELEPHONE, MADISON 5-07, EXT. 242, AT LEAST TWENTY-FOUR HOURS BEFORE STARTING ANY WORK UNDER THIS CONTRACT.

NO CHARGE FOR CONNECTIONS
R.D. Caldwell 11-5-58

TRACT No. 21736
PRIVATE CONTRACT NO. 4919

W.S. 47
2 SHEETS, 3 PAGES
SCALE: 1"=60' 1"=60' September 1958 26,534

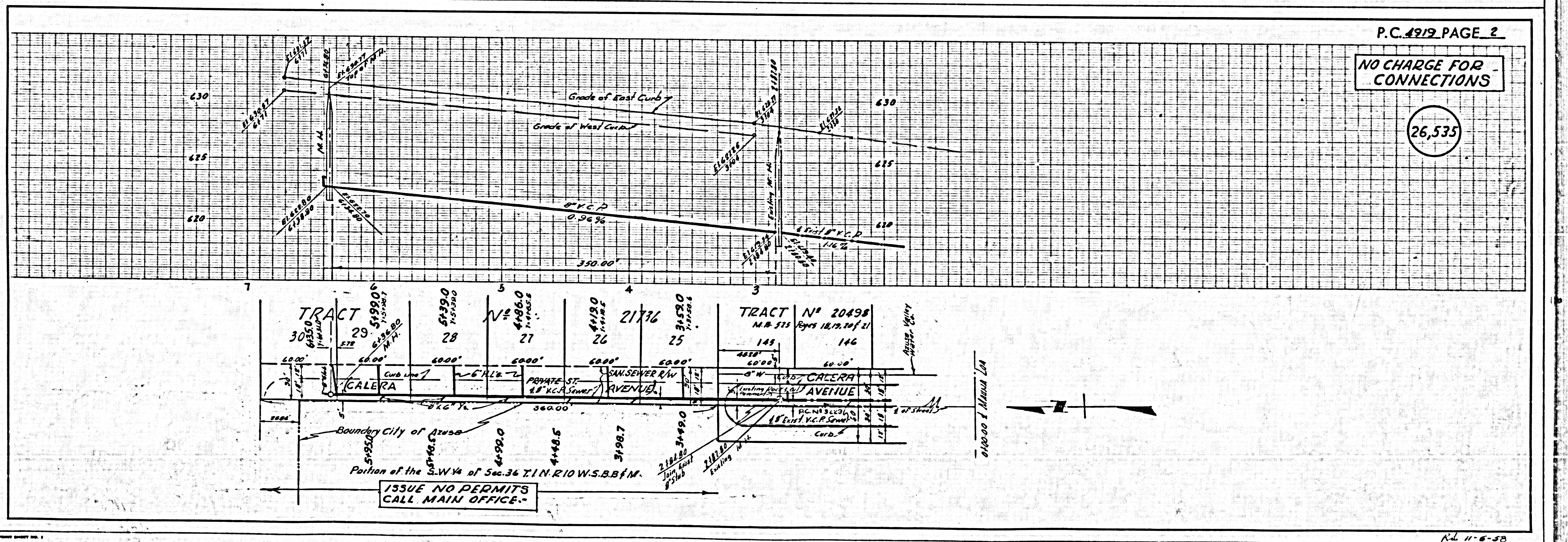
PREPARED IN THE OFFICES OF
TREADWELL ENGINEERING CORPORATION
By W. L. Treadwell
REG. C. E. NO. 218

FOR LEGEND SEE PLAN NO. S-A-64

NOTE:
GRADES TO WHICH THIS IMPROVEMENT IS TO BE CONSTRUCTED ARE SHOWN ON PLANS AND PROFILE GRADE POINTS FOR TOP OF CURB, CENTER LINE OF STREETS, OR CENTER LINE OF ALLEYS ARE SHOWN BY CIRCLES ON PROFILES AT ALL POINTS BETWEEN DESIGNATED POINTS THE GRADE SHALL BE ESTABLISHED SO AS TO CONFORM TO A STRAIGHT LINE BETWEEN SAID DESIGNATED POINTS.

ELEVATIONS ARE IN FEET ABOVE U.S.C. & G.S. SEA LEVEL DATUM OF 1929.
THIS DRAWING AND THE DATA HEREON ARE HEREBY MADE A PART OF THE SPECIFICATIONS.
WORK SHALL BE CONSTRUCTED ACCORDING TO SPECIFICATIONS ON FILE IN THE OFFICE OF THE COUNTY ENGINEER AND SHALL BE PROCURED ONLY IN THE PRESENCE OF THE COUNTY ENGINEER.
BEFORE WORK CAN BE STARTED, THE COUNTY ENGINEER MUST OBTAIN A PERMIT TO EXCAVATE IN COUNTY STREETS FROM THE COUNTY ROAD DEPT., DISTRICT OFFICE NO. 1. AND MAKE A REPORT WITH THE COUNTY ENGINEER, ROAD 134 PLAN AMERICAN APPROVAL OF THIS PLAN BY THE COUNTY OF LOS ANGELES DOES NOT CONSTITUTE A REPRESENTATION AS TO THE ACCURACY OF THE LOCATION OF OR THE EXISTENCE OR NON-EXISTENCE OF ANY UNDERGROUND UTILITY PIPE, OR STRUCTURE WITHIN THE LIMITS OF THIS PROJECT THIS NOTICE APPLIES TO ALL PAGES.
IF WORK IS TO BE DONE IN A STATE HIGHWAY, A PERMIT MUST BE OBTAINED FROM THE STATE OF CALIFORNIA, DIVISION OF HIGHWAYS, 128 SOUTH SPRING STREET.

COUNTY OF LOS ANGELES, CALIFORNIA
APPROVED, JOHN A. LAMBE, COUNTY ENGINEER
APPROVED, A. M. RAWN, CHIEF ENGINEER
BY W. L. Treadwell REG. C. E. NO. 218
BY W. L. Treadwell REG. C. E. NO. 218
CHECKED BY W. L. Treadwell 11-7-58
OFFICE OF COUNTY ENGINEER, 206 C. E. NO. 218
SUBMITTED W. L. Treadwell
SAN GABRIEL VALLEY REGIONAL ENGINEER



NO CHARGE FOR CONNECTIONS

26,535

ISSUE NO PERMITS
CALL MAIN OFFICE.

R.D. 11-5-58

NO CHARGE FOR CONNECTIONS

26,536

