

BENCHMARK
Palos Verdes Dr. West 1 Mile N. Point
Vicente Lighthouse 46' West of E. Dr.
of a cluster of Eucalyptus trees.
A s.d. C.S. Man. Stamped B.M. 34-28
1954 R.E. G.S. Set Flush with Surface.
F.B. 1355-31 1953 Adj. Elev. 247.621

LOMITA BLDG. DIST. NO. 7.1

PROFILE ALIGNMENT AND GRADE OF P.C. 4920
SANITARY SEWERS PAGE 1
TO BE CONSTRUCTED IN

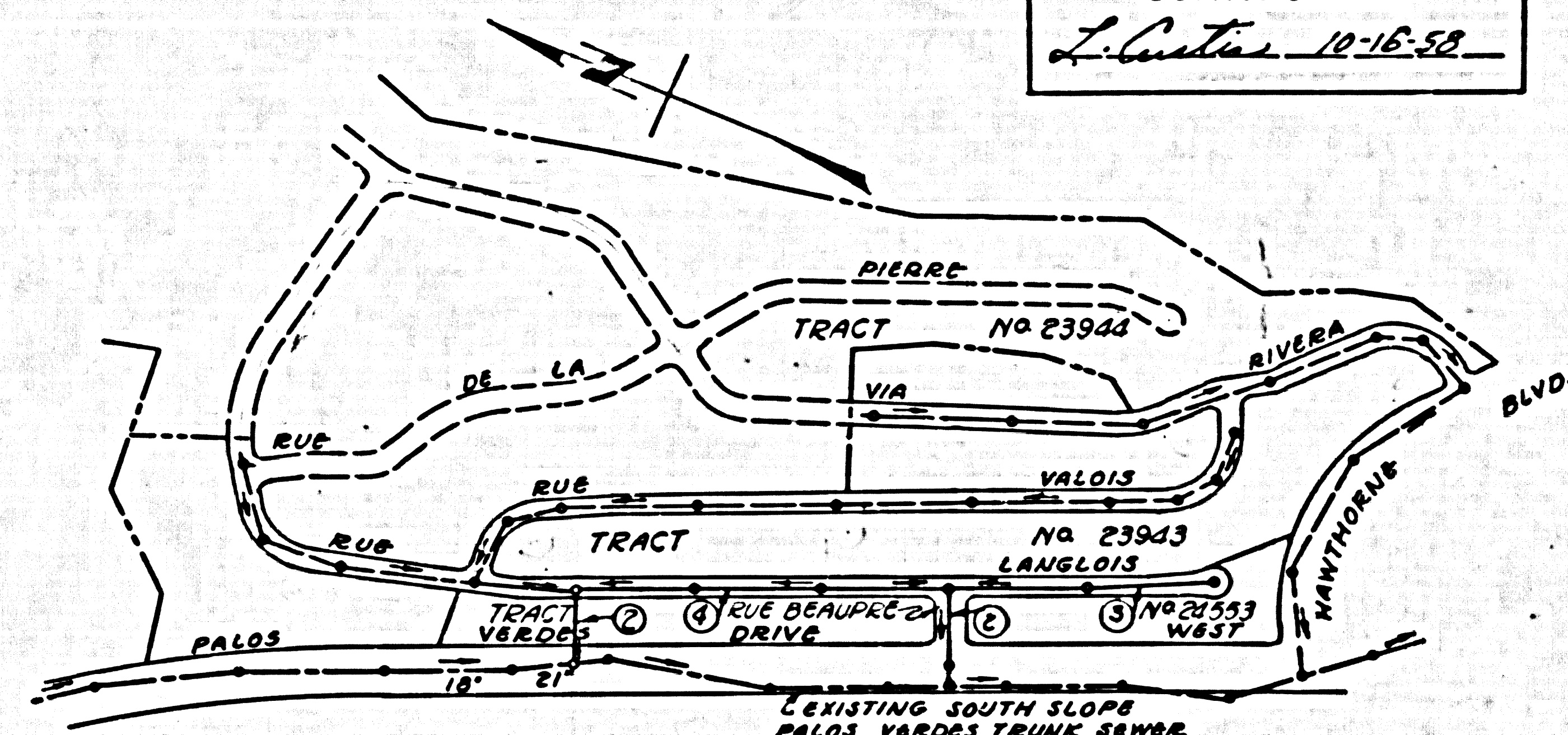
TRACT N° 24553
PRIVATE CONTRACT NO. 4920

25,828

W.S. 27
P. SHEETS, 4 PAGES
SCALE: HORIZ. 1"=40' VERT. 1"=4'
SEPTEMBER, 1957
PREPARED BY THE OFFICES OF
ENGINEERING SERVICE CORPORATION

FOR LEGEND SEE PLAN NO. S-A-64

NO CHARGE FOR CONNECTIONS
L. Curtis 10-16-58



INDEX MAP
TRACT N° 24553
P.C. 4920
Scale 1"=400'

- NOTES:
- PROFILES SHOWN ON THE PROPERTY LINE OR PROPERTY LINES PRODUCE AS BENCH MARKS TO THE SEWER LINE AT THE CENTER LINE OF EACH MANHOLE.
 - NO REPRESENTATIVE OF THE COUNTY ENGINEER WILL SURVEY OR LAY OUT ANY PORTION OF THE WORK.
 - THE OWNER OR HIS AUTHORIZED REPRESENTATIVE SHALL FURNISH THE COUNTY ENGINEER WITH GRADE SHEETS AND STATION FOR ALL HOUSE LATERALS AND Y BRANCHES AND SHALL PROVIDE STAKES FOR THEM AT THEIR PROPER LOCATIONS WITH STATIONING AND PLANNING NUMBER. ANY CHANGE IN LOCATION SHALL BE REQUESTED BY THE OWNER OR HIS REPRESENTATIVE.
 - NO IMPROVEMENTS SHALL BE MADE IN THESE PLANS WITHOUT THE APPROVAL OF THE COUNTY ENGINEER.
 - USE STANDARD MANHOLE FRAMES AND COVERS, S.A.-117, EXCEPT AS NOTED.
 - USE STANDARD STRENGTH PIPE EXCEPT AS NOTED.
 - USE CEMENT MORTAR 88 "W.B.E.E. - L.C.H." OR "S.P.E.B. - S.E.A.L." FOR ALL V.C.P. JOINTS PER S.P.C.'S, SECS. 364-48.
 - RESURFACE ALL TRACHS WITHIN PAVED AREA TO MEET L.A. COUNTY ROAD DEPT. OR CALIF. STATE HIGHWAY DEPT. REQUIREMENTS IN ACCORDANCE WITH PERMITS.
 - SHOULDER FOUR FEET OF SEWER AT POINTS OF INTERFERENCE WITH POLES, S.A.-119.
 - HOUSE LATERALS TO BE CONSTRUCTED WITH INVERTS AT PROPERTY LINE. 6" MIN. BELOW CURB GRADE EXCEPT AS NOTED.
 - ALL STRUCTURES SHALL BE BRICK SEWER STRUCTURES, S.A.-104, EXCEPT AS NOTED.
 - FOR ALLOWABLE SARGAS TEST USE FORMULA NO. 1 S.P.C.'S, SEC. 54.
 - MANHOLE TOPS IN UNIMPROVED RIGHTS-OF-WAY TO BE 6" ABOVE FINISHED GRADE.
- (a) No construction will be permitted in filled areas unless acceptable certification is submitted to the Construction Division of the County Engineer's Department that relative compaction is greater than 80%.
- (b) If compaction is less than 80%, the sewer must be graded as shown on the plans per S-A-64.
- (c) If compaction is greater than 80%, grading is not required. However, joint compounds must be substituted for cement mortar for all joints in filled areas.
- (d) Private Engineer is to furnish house lateral depth of property line below the top of curb elevation for each house lateral on the grade sheet.
- (e) The Contractor shall notify the Construction and Storm Drain Division by telephone, Madison @ 4747, Ext. 367, at least 24 hrs. before starting any work under this Contract.

ENGINEERING SERVICE CORPORATION			
1127 W. WASHINGTON BLVD.			
LOS ANGELES 15, CALIF. B. 9-7281			
REVISIONS		TRACED BY	J.P. H.M.
		DES'G'D BY	C.P.
		C.K'D BY	J.P.
		SUBMITTED	M.S.
SUB STRUCTURES OK'D			
W. O. NO.	D.W. NO.	DATE	SCALE
6601-105		SEPT. 1958	AS SHOWN

GRADES TO WHICH THIS IMPROVEMENT IS TO BE CONSTRUCTED ARE SHOWN ON PLANS AND PROFILES. GRADE POINTS FOR TOP OF CURB, CENTER LINE OF STREETS, OR CENTER LINE OF ALLEYS ARE SHOWN BY CIRCLES ON PROFILES AT ALL POINTS BETWEEN MANHOLE POINTS. THE GRADE SHALL BE ESTABLISHED SO AS TO CONFORM TO A STRAIGHT LINE BETWEEN SAID BOUNDARY POINTS.

ELEVATIONS ARE IN FEET ABOVE M.S.L. & U.S. SEA LEVEL DATUM OF 1929.

THE DRAWING AND THE DATA HEREON ARE HEREBY MADE A PART OF THE SPECIFICATIONS.

WORK SHALL BE CONSTRUCTED ACCORDING TO SPECIFICATIONS ON FILE IN THE OFFICE OF THE COUNTY ENGINEER AND SHALL BE PROCURED ONLY IN THE PRESENCE OF THE COUNTY ENGINEER.

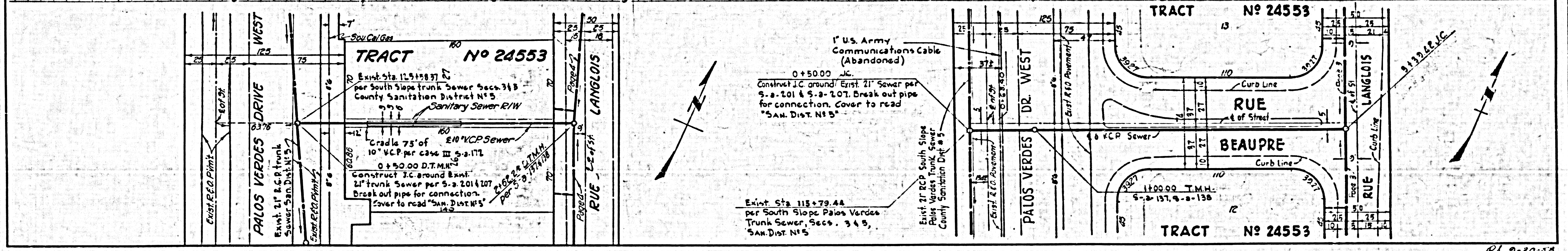
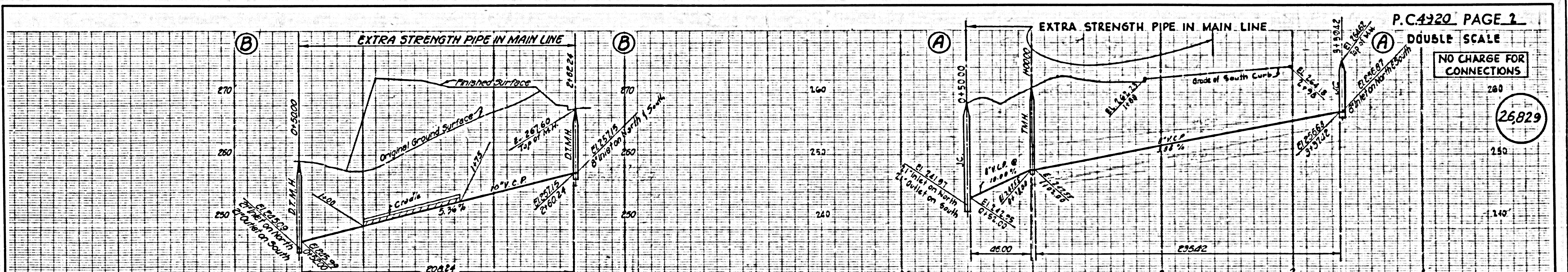
BEFORE WORK CAN BE STARTED, THE CONTRACTOR SHALL OBTAIN A PERMIT TO EXCAVATE IN ACCORDANCE WITH THE L.A. COUNTY ROAD DEPT. 3187 AND MAKE A REPORT WITH THE COUNTY ENGINEER, ROOM 244 FARM ANGLEMAN BUILDING, 235 SO. BROADWAY SUFFICIENT TO COVER THE COST OF CONSTRUCTION, INSPECTION AND RECORD PLANS.

APPROVAL OF THIS PLAN BY THE COUNTY OF LOS ANGELES DOES NOT CONSTITUTE A REPRESENTATION AS TO THE ACCURACY OF THE LOCATION OF OR THE EXISTENCE OR NON-EXISTENCE OF ANY UNDERGROUND UTILITY PIPE, OR STRUCTURE WITHIN THE LIMITS OF THE PROJECT. THIS NOTE APPLIES TO ALL PAGES.

IF WORK IS TO BE DONE IN A STATE HIGHWAY, A PERMIT MUST BE OBTAINED FROM THE STATE OF CALIFORNIA, DIVISION OF HIGHWAYS, 128 SOUTH SPRING STREET.

COUNTY OF LOS ANGELES, CALIFORNIA

APPROVED, JOHN A. LAMBE, COUNTY ENGINEER
APPROVED, A. M. BAWN, CHIEF ENGINEER
BY: *[Signature]* BY: *[Signature]*
SANITATION ENGINEER OFFICE ENGINEER
CHECKED BY: *[Signature]* 10-16-58
OFFICE OF COUNTY ENGINEER, BLDG. C. & NO. 9406



1" U.S. Army Communications Cable (Abandoned)
0+50.00 J.C.
Construct J.C. around Exist. 21" Sewer per S.A. 201 & S.A. 207. Break out pipe for connection. Cover to read "SAN. DIST. N° 5"

Exist. Sta. 115+79.44 per South Slope Palos Verdes Trunk Sewer, Secs. 345, SAN. DIST. N° 5

Exist. 21" RCP South Slope Palos Verdes Trunk Sewer County Sanitation Dist. # 5

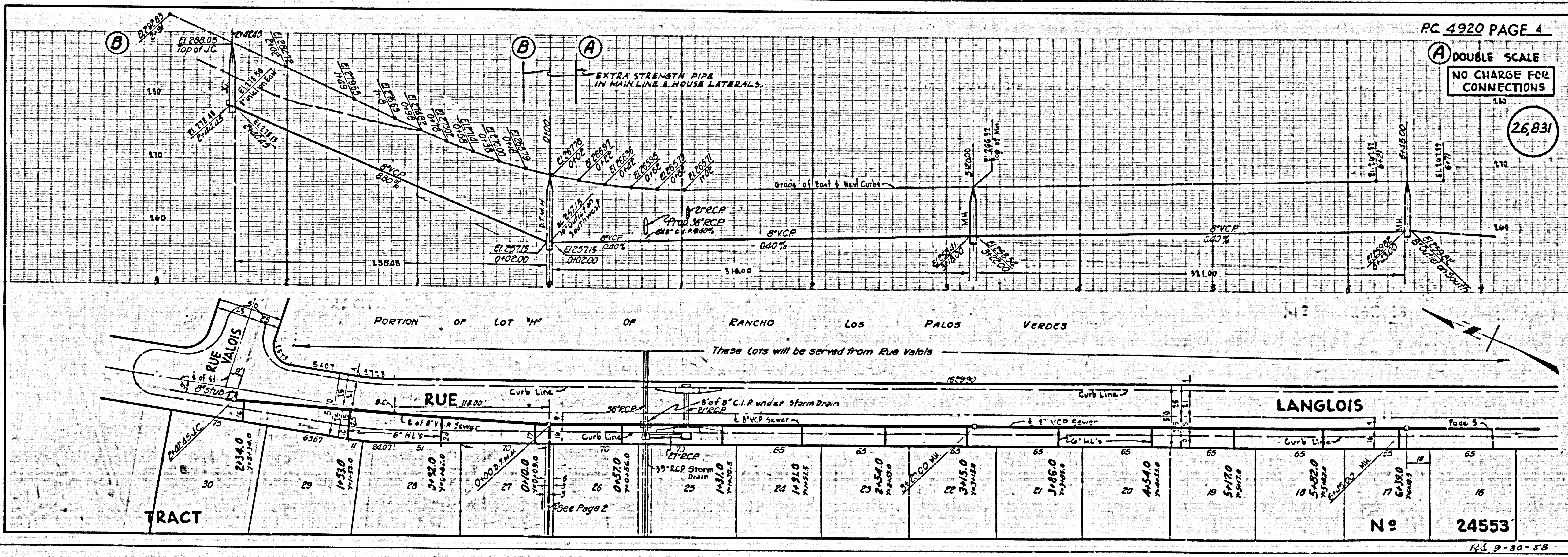
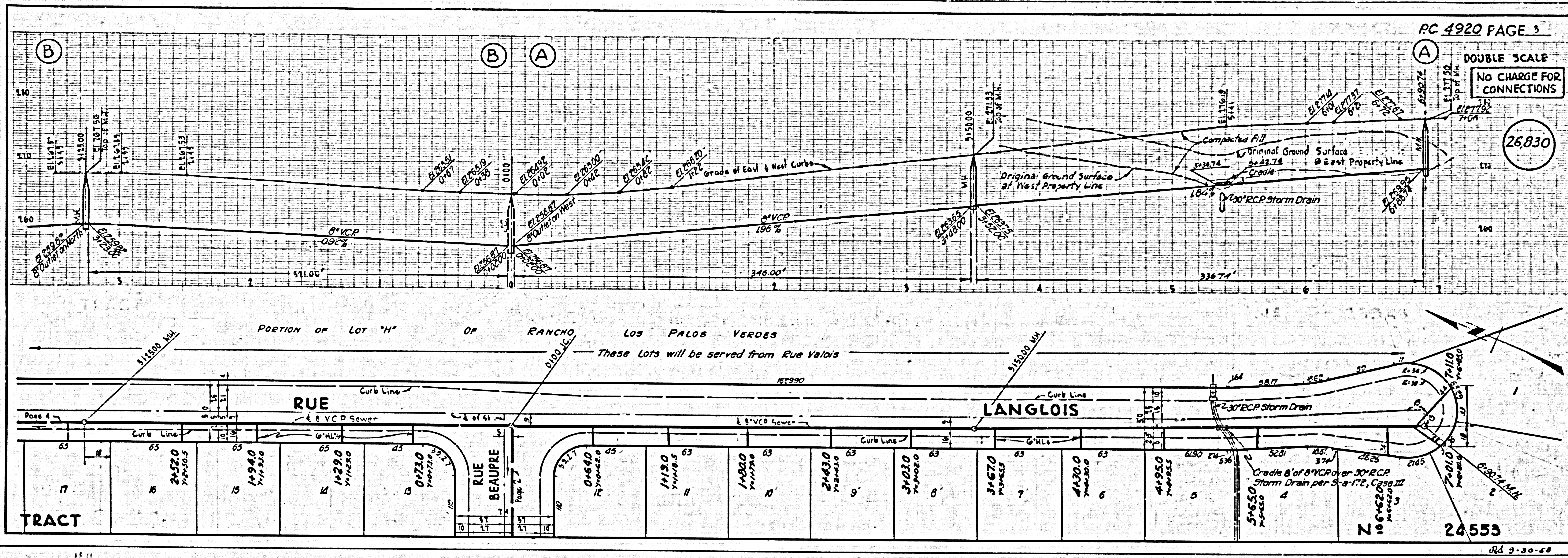
P.C. 4920 PAGE 2

DOUBLE SCALE

NO CHARGE FOR CONNECTIONS

26,829

RD 9-30-58



5) BC 4350
BRCA No 54223

J.C.

M.H.