

INDEX MAP
TRACT NO 20382
P.C. 4921
SCALE 1"=300'

BENCH MARK N° SY 3327
Spk. and Lead in S'y. Curb
of San Gabriel Blvd. 3' West
Curb return of S.W. cor. Grand
View Ave Vol. 16 Page 1764.
ELEV 340.493
(1932 Line 1935)

TEMPLE CITY BLDG. DIST. NO. 5

- NOTES
1. PROVIDE STAKES ON THE PROPERTY LINE OR PROPERTY LINES PRODUCED AT RIGHT ANGLES TO THE SEWER LINE AT 20' CENTER LINE OF EACH MANHOLE.
 2. NO REPRESENTATIVE OF THE COUNTY ENGINEER WILL SURVEY OR LAY OUT ANY PORTION OF THE WORK.
 3. THE OWNER OR HIS AUTHORIZED REPRESENTATIVE SHALL FURNISH THE COUNTY ENGINEER WITH GRADE SHEETS AND STATIONING FOR ALL HOUSE LATERALS AND BRANCHES AND SHALL PROVIDE STAKES FOR THEM AT THESE POINTS LOCATIONS WITH STATIONING PLAINLY MARKED. ANY CHANGES IN LOCATION SHALL BE REQUESTED IN WRITING BY THE OWNER OR HIS REPRESENTATIVE.
 4. THE PRIVATE ENGINEER SHALL FURNISH THE RE USE LATERAL DEPTH AT THE PROPERTY LINE BELOW THE TOP OF CURB ELEVATION FOR EACH HOUSE LATERAL ON THE GRADE SHEET.
 5. NO REVISIONS SHALL BE MADE IN THESE PLANS WITHOUT THE APPROVAL OF THE COUNTY ENGINEER.
 6. USE STANDARD MANHOLE FRAMES AND COVERS, 6-117.
 7. USE STANDARD BRICKS PER SPEC. 5-107.
 8. USE CHANGE NOTATION OR "WEDGE-LOCOT" OR "WEDG-SEAL" FOR ALL J.C.P. JOINTS PER SPEC. 5-104.
 9. RESURFACE ALL TRACES WITHIN PAVED AREA TO MEET L.A. COUNTY ROAD DEPT. OF CALIF. STATE HIGHWAY REQUIREMENTS IN ACCORDANCE WITH "MANITS".
 10. MIN. 4" FOUR FEET OF SEWER AT POINTS OF INTERFERENCE WITH POLES, CASE NO. 6-172.
 11. HOUSE LATERALS TO BE CONSTRUCTED WITH INVERTS AT PROPERTY LINE 6" FEET BELOW CURB GRADE.
 12. ALL STRUCTURES SHALL BE BRICK SEWER STRUCTURES, 5-104.
 13. FOR ALLOWABLE LEAKAGE TEST USE FORMULA NO. 1 SPEC. 5-104.
 14. MANHOLE TOPS IN UNIMPROVED RIGHTS-OF-WAY TO BE SIX INCHES ABOVE FINISHED GRADE.
 15. THE CONTRACTOR SHALL NOTIFY THE CONSTRUCTION & STORM DRAIN DIVISION BY TELEPHONE, MADISON 5-476, EXT. 306, AT LEAST TWENTY-FOUR HOURS BEFORE STARTING ANY WORK UNDER THIS CONTRACT.

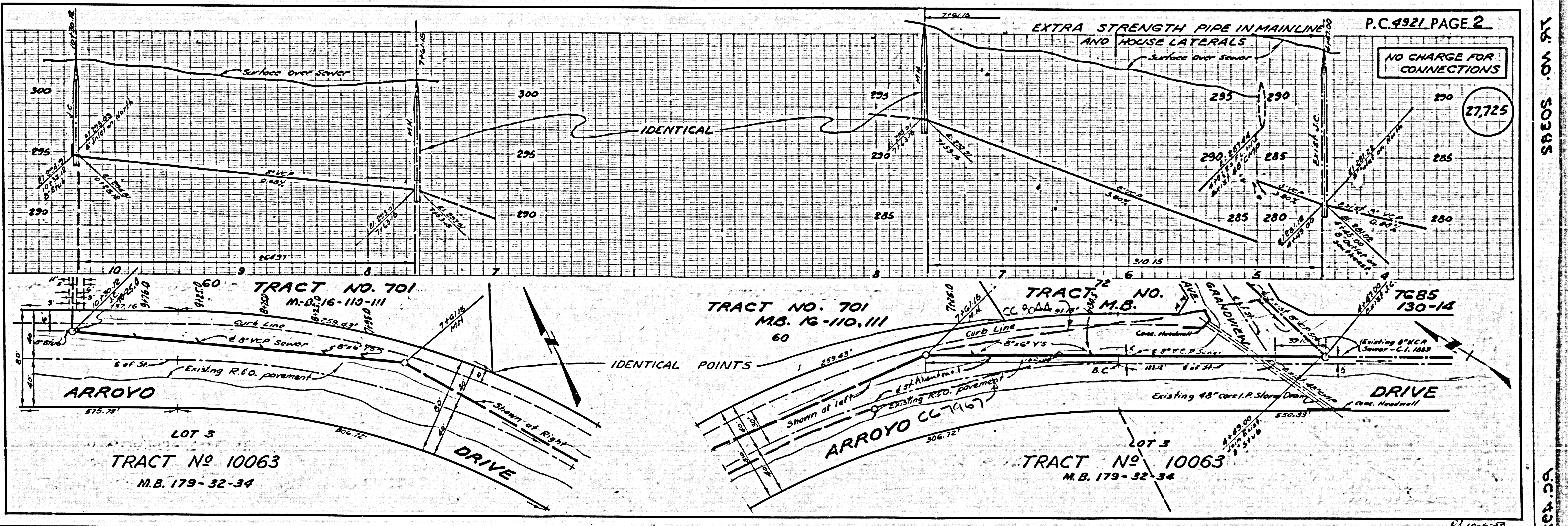
NO CHARGE FOR
CONNECTIONS
T. P. Caldwell, Inc.

PROFILE ALIGNMENT AND GRADE OF P.C. 4921
SANITARY SEWERS PAGE 1
TO BE CONSTRUCTED IN
TRACT N° 20382 (27,724)

PRIVATE CONTRACT NO. 4921
W.S. 36
2 SHEETS, 4 PAGES
SCALE: VERT. 1"=4' HORIZ. 1"=40' SEPT. 1958
PREPARED BY THE OFFICES OF
TREADWELL ENGINEERING CORPORATION
By *W. J. Treadwell*
REG. C. E. NO. 410
FOR LEGEND SEE PLAN NO. S-A-64

NOTES
GRADE TO WHICH THIS IMPROVEMENT IS TO BE CONSTRUCTED ARE SHOWN ON PLANS AND PROFILE. GRADE POINTS FOR TOP OF CURB, CENTER LINE OF STREETS, OR CENTER LINE OF ALLEYS ARE SHOWN BY CIRCLES ON PROFILES. AT ALL POINTS BETWEEN DESIGNATED POINTS THE GRADE SHALL BE ESTABLISHED SO AS TO CONFORM TO A STRAIGHT LINE DRAWN BETWEEN SAID DESIGNATED POINTS.
ELEVATIONS ARE IN FEET ABOVE 222 C. & S. 224 LEVEL DATUM OF 1929.
THIS DRAWING AND THE DATA HEREON ARE HEREBY MADE A PART OF THE SPECIFICATIONS.
WORK SHALL BE CONSTRUCTED ACCORDING TO SPECIFICATIONS ON FILE IN THE OFFICE OF THE COUNTY ENGINEER AND SHALL BE PROSECUTED ONLY IN THE PRESENCE OF THE COUNTY ENGINEER.
BEFORE WORK CAN BE STARTED, THE CONTRACTOR MUST OBTAIN A PERMIT TO EXCAVATE IN COUNTY STREETS FROM THE L.A. COUNTY ROAD DEPT., DISTRICT OFFICE NO. 1, AND MAKE A REPORT WITH THE COUNTY ENGINEER, ROOM 224 PARK AVENUE BUILDING, 222 1/2 BROADWAY STATING TO COVER THE COST OF CONSTRUCTION INSPECTION AND RECORD PLANS.
APPROVAL OF THIS PLAN BY THE COUNTY OF LOS ANGELES DOES NOT CONSTITUTE A REPRESENTATION AS TO THE ACCURACY OF THE LOCATION OF OR THE EXISTENCE OR NON-EXISTENCE OF ANY UNDERGROUND UTILITY PIPES, OR STRUCTURE WITHIN THE LIMITS OF THIS PROJECT. THE NOTE APPLIES TO ALL PAGES.
IF WORK IS TO BE DONE IN A STATE HIGHWAY, A PERMIT MUST BE OBTAINED FROM THE STATE OF CALIFORNIA, DIVISION OF HIGHWAYS, 126 SOUTH SPRING STREET.

COUNTY OF LOS ANGELES, CALIFORNIA
APPROVED, JOHN A. LAMME, COUNTY ENGINEER
APPROVED, A. M. RAWL, CHIEF ENGINEER
By *J. H. Hughes* SANITATION ENGINEER
By *A. M. Rawl* OFFICE ENGINEER
CHECKED BY *W. J. Treadwell*
OFFICE OF COUNTY ENGINEER, REG. C. E. NO. 2426
SUBMITTED *N. P. Bravender*
SAN GABRIEL VALLEY REGIONAL ENGINEER



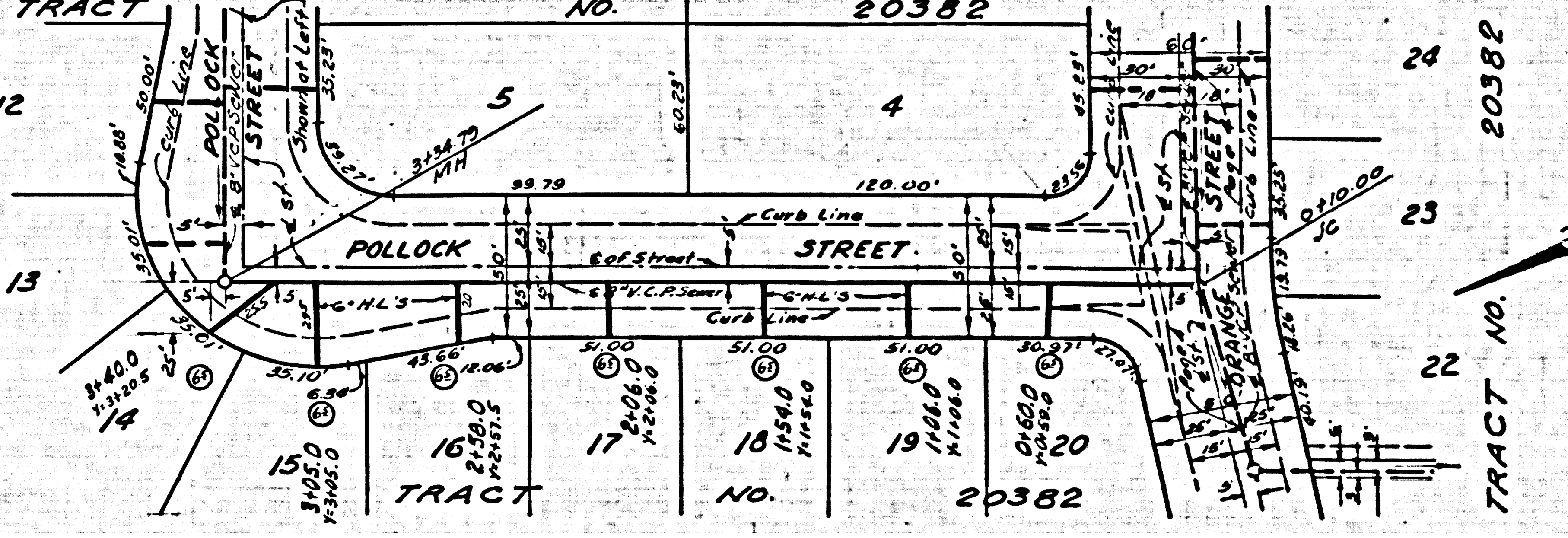
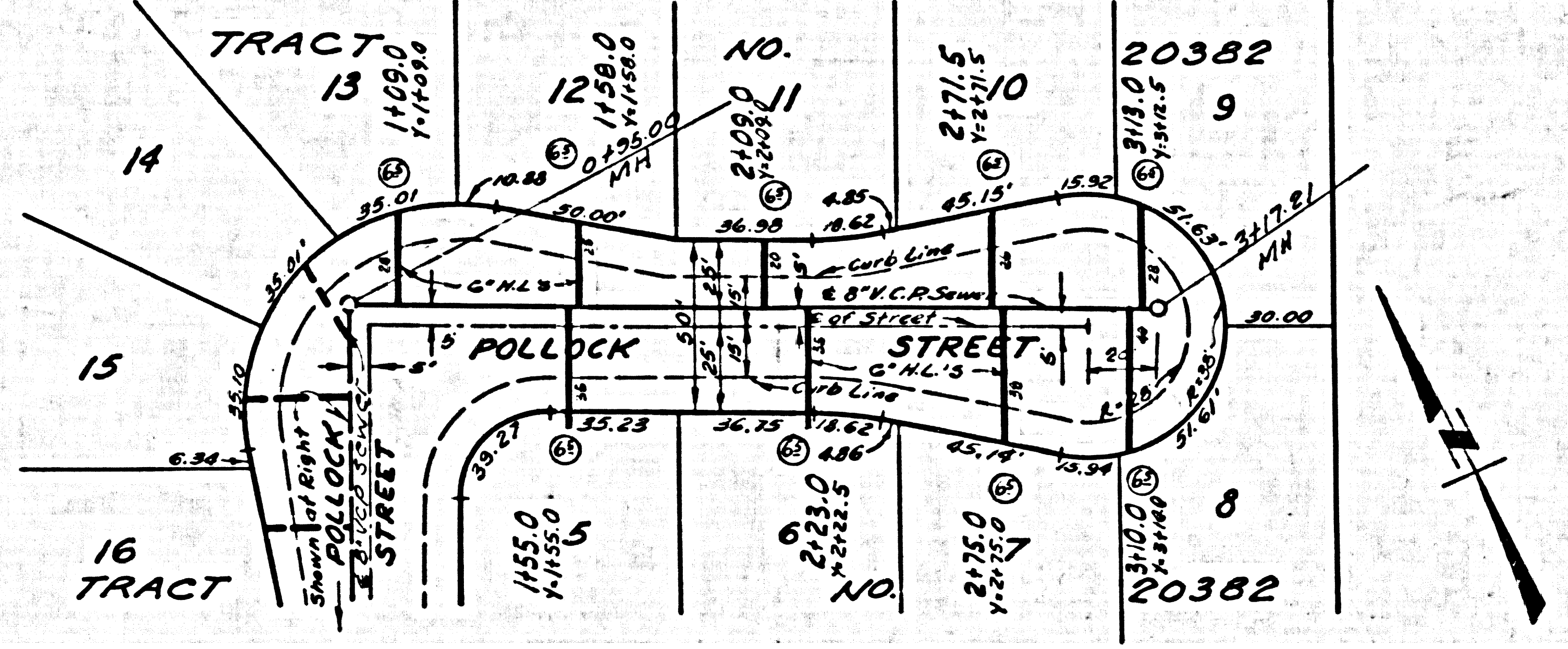
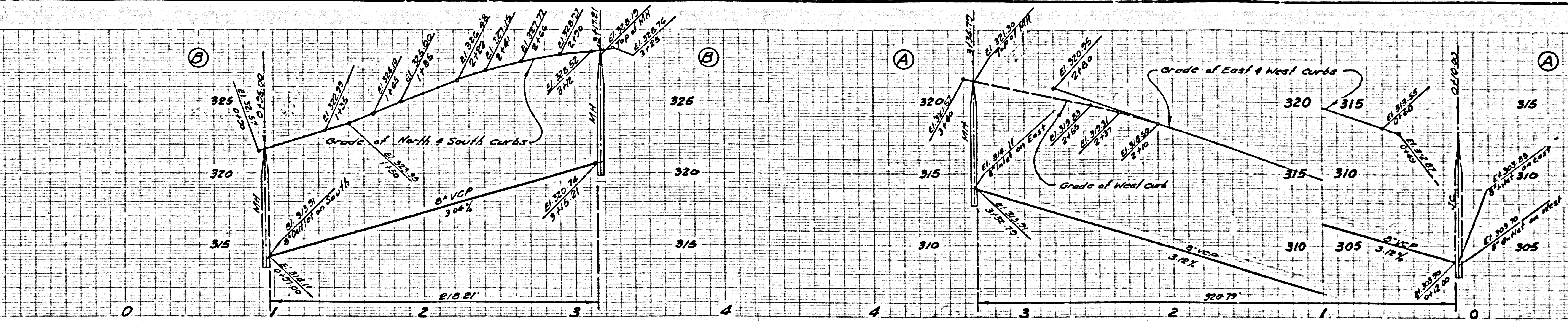
P.C. 4921 PAGE 2

NO CHARGE FOR
CONNECTIONS
(27,725)

RD 10-6-58

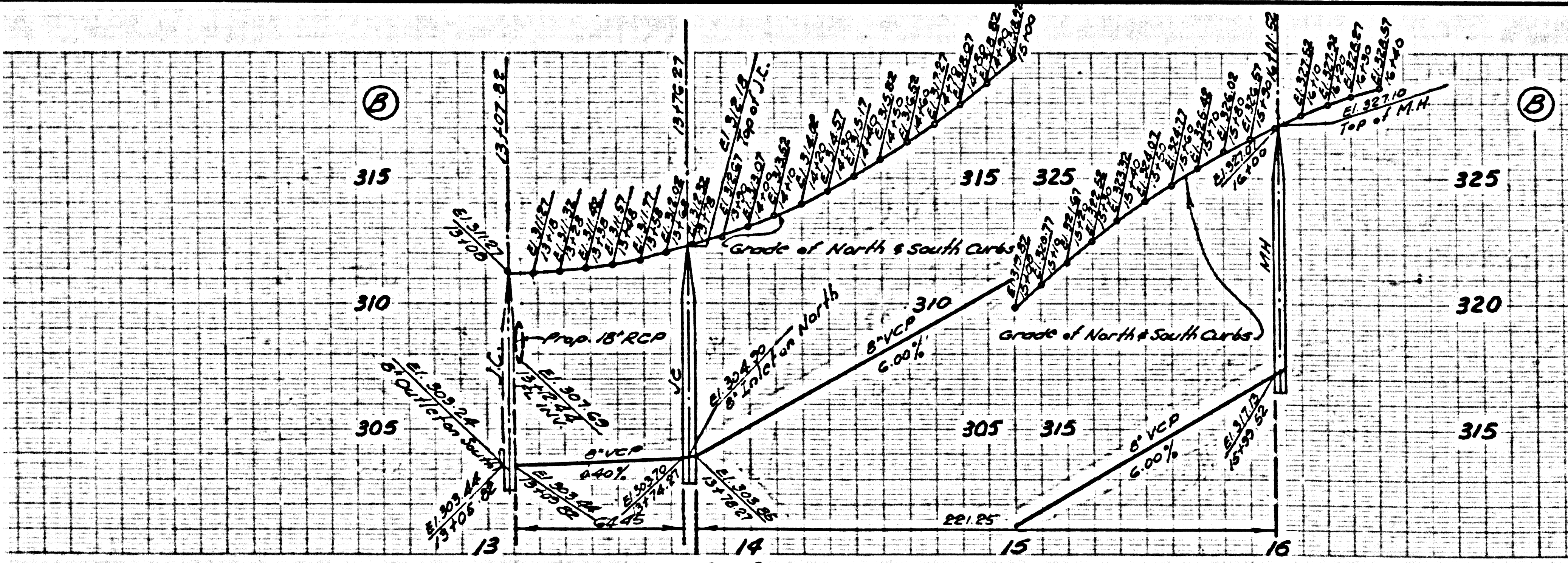
NO CHARGE FOR CONNECTION

27726



NO CHARGE FOR CONNECTIONS

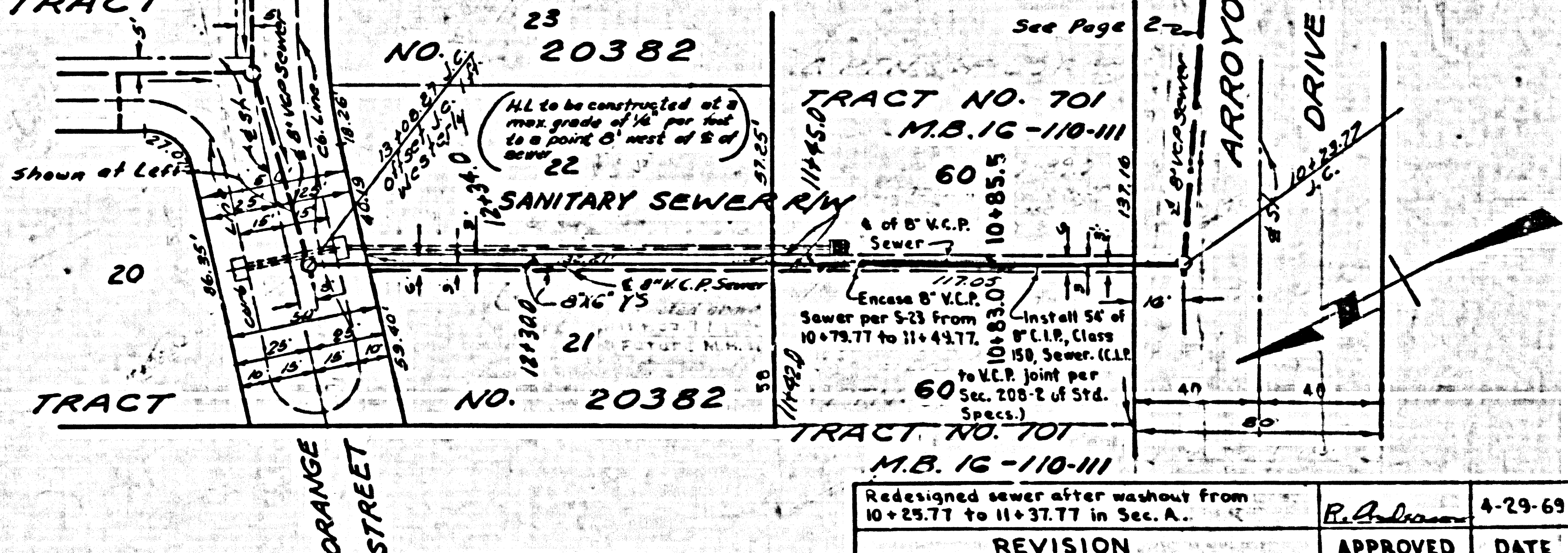
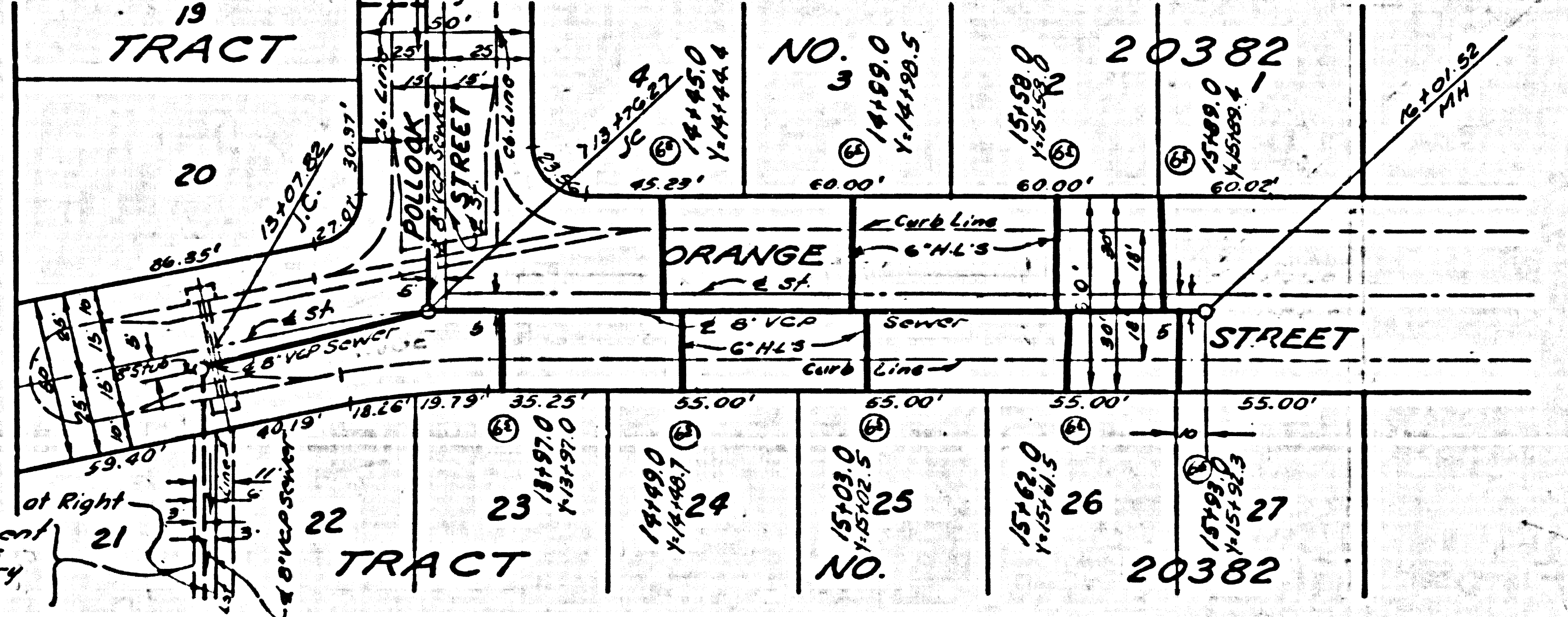
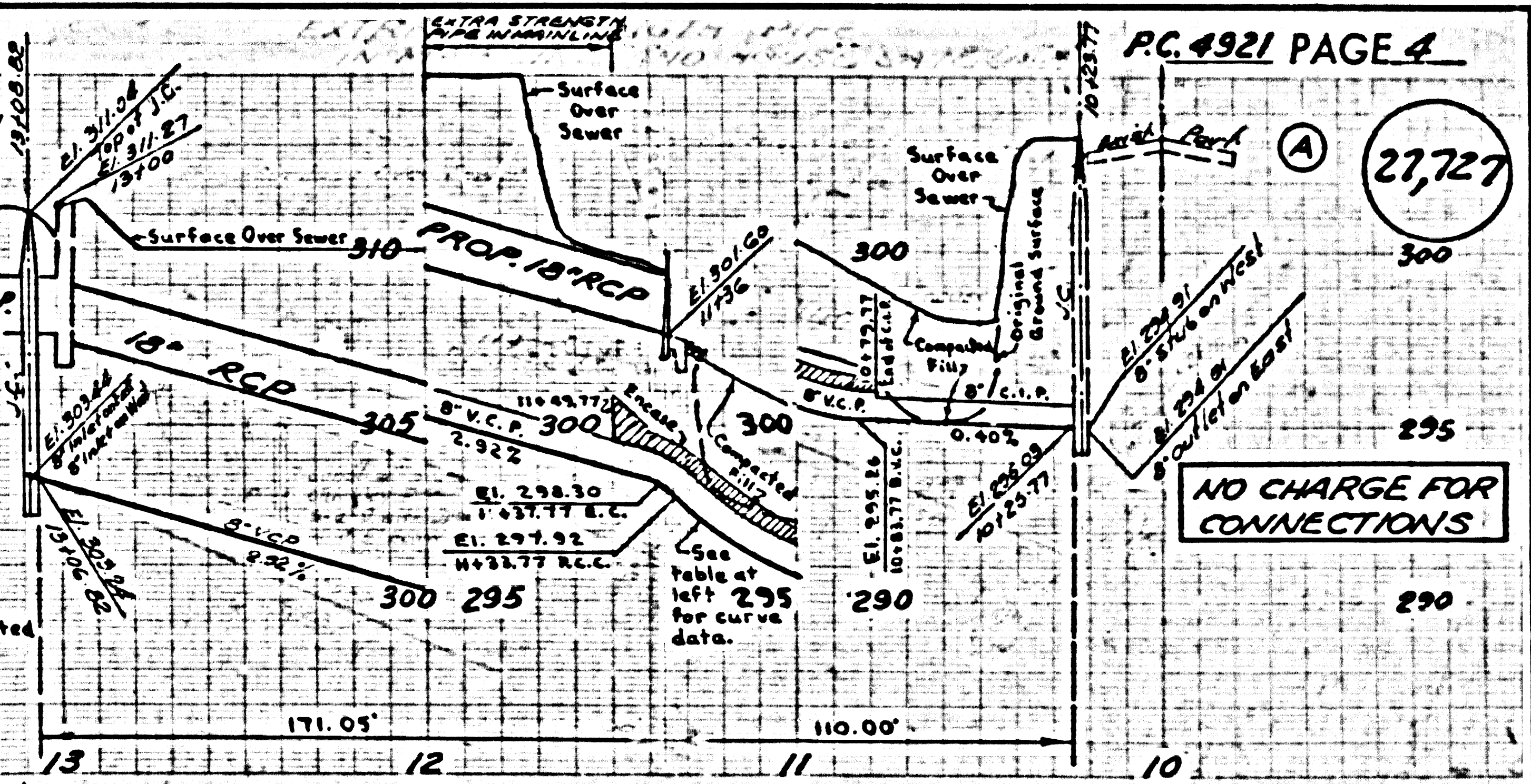
27727



~ CURVE DATA ~

STATION	ELEV.
B.V.C. 10+83.77	295.26
10+88.77	295.30
10+93.77	295.40
10+98.77	295.54
11+03.77	295.73
M.V.C. 11+08.77	295.98
11+13.77	296.26
11+18.77	296.60
11+23.77	297.00
11+28.77	297.43
P.C.C. 11+33.77	297.92
11+35.77	298.15
E.C. 11+37.77	298.30

NOTE: The 50' vertical curve is to be constructed with 5' lengths of pipe. The inlet & outlet of a future M.H. at 11+35.77 are to be connected temporarily with two 2' sections of pipe.



Redesignated sewer after washout from 10+29.77 to 11+37.77 in Sec. A.

REVISION APPROVED DATE

4-29-69

10-6-58