

FIRESTONE BLDG. DIST. NO. 1

PROFILE ALIGNMENT AND GRADE OF P.C. 4922  
 SANITARY SEWERS PAGE 1  
 TO BE CONSTRUCTED IN

TRACT N<sup>o</sup> 24510

PRIVATE CONTRACT NO. 4927

W.S. 36  
 1 SHEET, 2 PAGES

SCALE: VERT. 1" = 4' HORIZ. 1" = 40'

AUGUST, 1958  
 PREPARED IN THE OFFICES OF

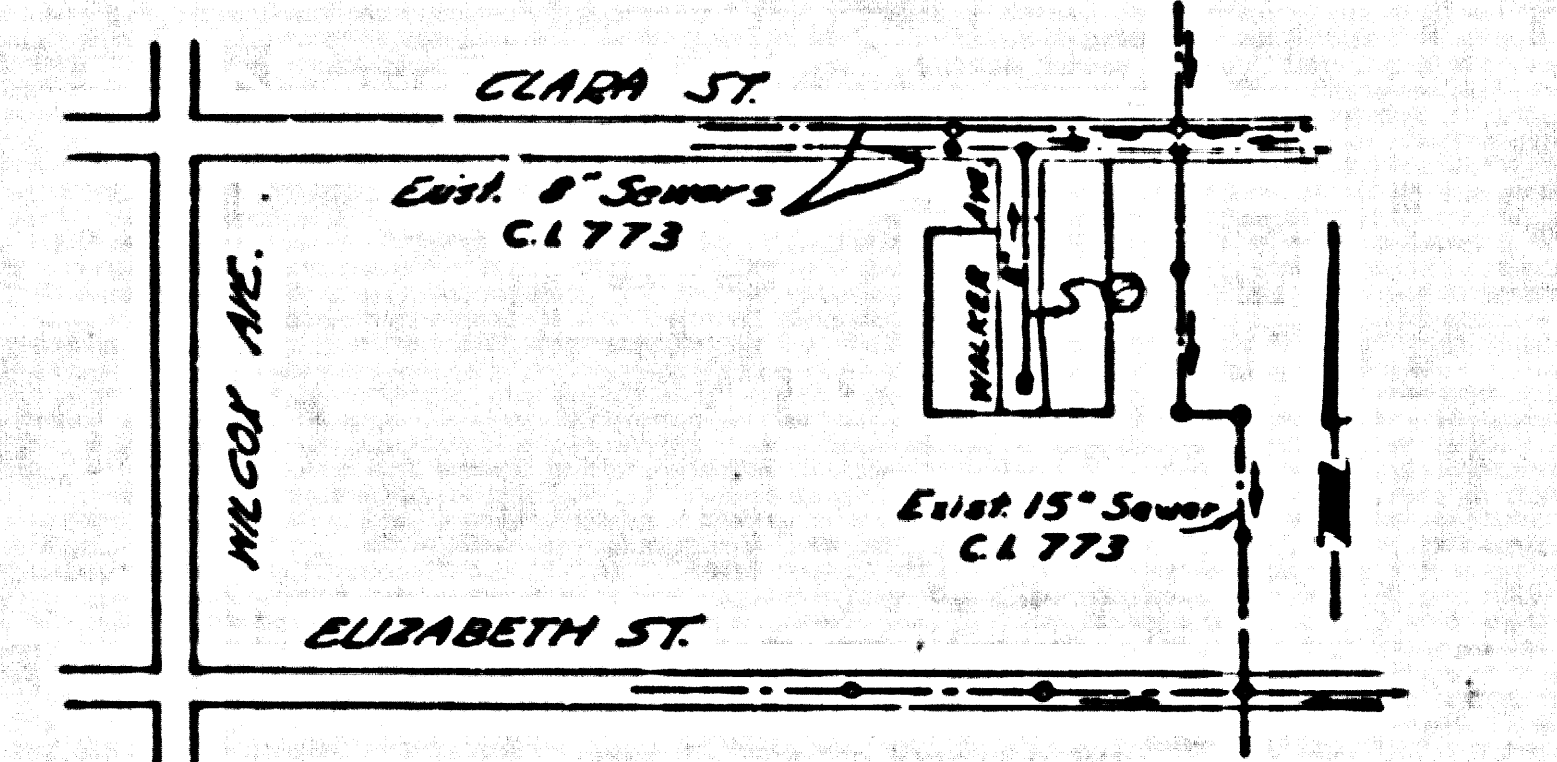
MANNING ENGINEERING Co.  
 by Erwin L. Manning  
 REG. C. E. NO. 2872

FOR LEGEND SEE PLAN NO. S-A-64

BENCH MARK SY 1752 Elev. 115.470  
 1.18 inch nail in N. curb of Clara Street  
 in front of house # 3125 ± 800' E. of  
 Walker Avenue (South Gate Quad).

NO CHARGE  
 FOR CONNECTIONS  
 L. Luster 12-11-58

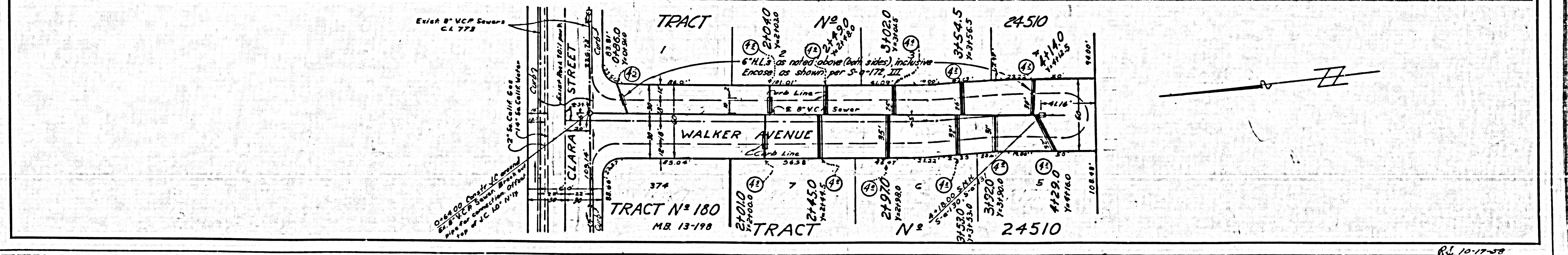
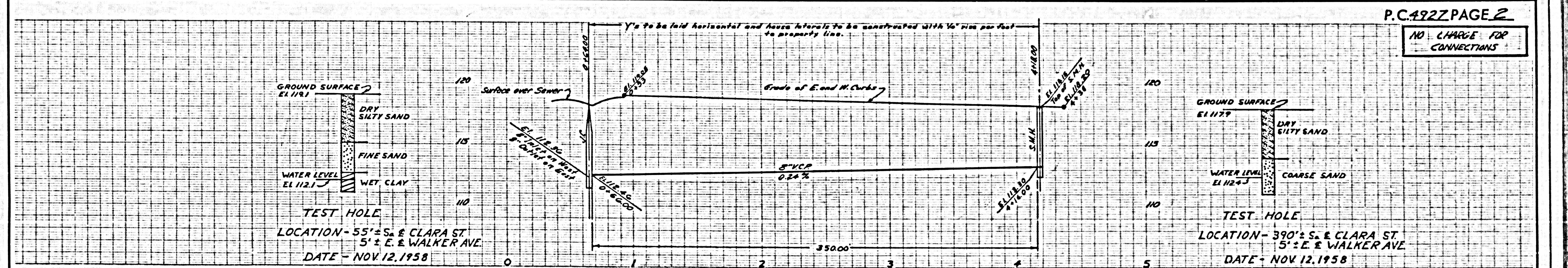
- NOTES:
- PROVIDE STAKES ON THE PROPERTY LINE OR PROPERTY LINE PRODUCE AT RIGHT ANGLES TO THE SEWER LINE AT THE CENTER LINE OF EACH MANHOLE.
  - NO REPRESENTATIVE OF THE COUNTY ENGINEER WILL SUPERVISE OR LAUNCH ANY PORTION OF THE WORK.
  - THE OWNER OR HIS AUTHORIZED REPRESENTATIVE SHALL FURNISH THE COUNTY ENGINEER WITH GRADE SHEETS AND STATION FOR ALL HOUSE LATERALS AND Y BRANCHES AND SHALL PROVIDE STAKES FOR THEM AT THEIR PROPER LOCATIONS WITH STATIONING PLAINLY MARKED. ANY CHANGE IN LOCATION SHALL BE REQUESTED BY WRITING BY THE OWNER OR HIS REPRESENTATIVE.
  - NO APPROVAL SHALL BE MADE IN THESE PLANS WITHOUT THE APPROVAL OF THE COUNTY ENGINEER.
  - USE STANDARD MANHOLE FRAMES AND COVERS, S-A-117, EXCEPT AS NOTED.
  - USE STANDARD STRENGTH PIPE EXCEPT AS NOTED.
  - USE JOINT-COMPOUND "WEDGE-LOCK" OR "SPEED-SEAL" FOR ALL VITRIFIED CLAY PIPE JOINTS PER SPEC., SECT. 2330.100.
  - INSURE ALL TRENCH WORKING AREAS TO BEET L.A. COUNTY ROAD DEPT. OR CALIF. STATE HIGHWAY DEPT. SIGNING RIGHTS IN ACCORDANCE WITH PERMITS.
  - ENCASE FOUR FEET OF SEWER AT POINTS OF INTERFERENCE WITH POLES, S-A-116.
  - HOUSE LATERALS TO BE CONSTRUCTED WITH MANHOLE'S AT PROPERTY LINE. SEE FIRST SHEET FOR GRADE EXCEPT AS NOTED.
  - ALL STRUCTURES SHALL BE BUILT BY STRUCTURE, S-A-104, EXCEPT AS NOTED.
  - FOR ALLOWABLE BRACKETS SEE FORMULA NO. 2 SPEC., SEC. 60.
  - MANHOLE TOPS IN UNIMPROVED RIGHTS-OF-WAY TO BE 6" ABOVE FINISHED GRADE.
  - THE PRIVATE ENGINEER SHALL FURNISH THE HOUSE LATERAL DEPTH AT THE PROPERTY LINE BELOW THE TOP OF CURB ELEVATION FOR EACH HOUSE LATERAL ON THE GRADE SHEET.
  - THE CONTRACTOR SHALL NOTIFY THE CONSTRUCTION AND STORM DRAIN DIVISION BY TELEPHONE, MADISON 46767, EXT. 363, AT LEAST 24 HOURS BEFORE STARTING ANY WORK UNDER THIS CONTRACT.



KEY MAP  
 TRACT N<sup>o</sup> 24510  
 SCALE 1" = 400'

NOTE:  
 GRADES TO WHICH THIS IMPROVEMENT IS TO BE CONSTRUCTED ARE SHOWN ON PLANS AND PROFILES. GRADE POINTS FOR TOP OF CURB, CENTER LINE OF STREET, OR CENTER LINE ALLEY ARE SHOWN BY CROSS MARKS. AT ALL POINTS BETWEEN INDICATED POINTS THE GRADE SHALL BE ESTABLISHED SO AS TO CONFORM TO A STRAIGHT LINE DRAWN BETWEEN SAID DESIGNATED POINTS.  
 ELEVATIONS ARE IN FEET ABOVE U.S.C. & G.S. SEA LEVEL, UNLESS OTHERWISE SPECIFIED.  
 THE DRAWINGS AND DATA HEREON ARE HEREBY MADE A PART OF THE SPECIFICATIONS.  
 WORK SHALL BE CONSTRUCTED ACCORDING TO SPECIFICATIONS ON FILE IN THE OFFICE OF THE COUNTY ENGINEER AND SHALL BE PROSECUTED ONLY IN THE PRESENCE OF THE COUNTY ENGINEER.  
 BEFORE WORK CAN BE STARTED, THE CONTRACTOR MUST OBTAIN A PERMIT TO EXCAVATE BY COUNTY STREET FROM THE COUNTY ENGINEER. THE CONTRACTOR SHALL MAKE A DEPOSIT WITH THE COUNTY ENGINEER, ROOM 201 MAIN AMERICAN BUILDING, 120 SOUTH BRADLEY BUILDING TO COVER THE COST OF CONSTRUCTION INSPECTION AND RECORD PLANS.  
 APPROVAL OF THIS PLAN BY THE COUNTY OF LOS ANGELES DOES NOT CONSTITUTE A REPRESENTATION AS TO THE ACCURACY OF THE LOCATION OR OF THE EXISTENCE OR NON-EXISTENCE OF ANY UNDERGROUND BRICK PIPE, OR STRUCTURE WITHIN THE LIMITS OF THIS PROJECT. THIS NOTE APPLIES TO ALL PAGES.  
 IF WORK IS TO BE DONE IN A STATE HIGHWAY, A PERMIT MUST BE OBTAINED FROM THE STATE OF CALIFORNIA, DIVISION OF HIGHWAYS, 126 SOUTH SPRING STREET.

COUNTY OF LOS ANGELES, CALIFORNIA  
 APPROVED, JOHN A. LAMBE, COUNTY ENGINEER  
 APPROVED, C. A. COMPTON, CHIEF ENGINEER  
 BY Erwin L. Manning OFFICE ENGINEER  
 CHECKED BY Sammy K. Oude 11-17-58  
 OFFICE OF COUNTY ENGINEER, REG. C. E. NO. 2426



P.C. 4922 PAGE 2  
 NO CHARGE FOR CONNECTIONS

Rd. 10-12-58