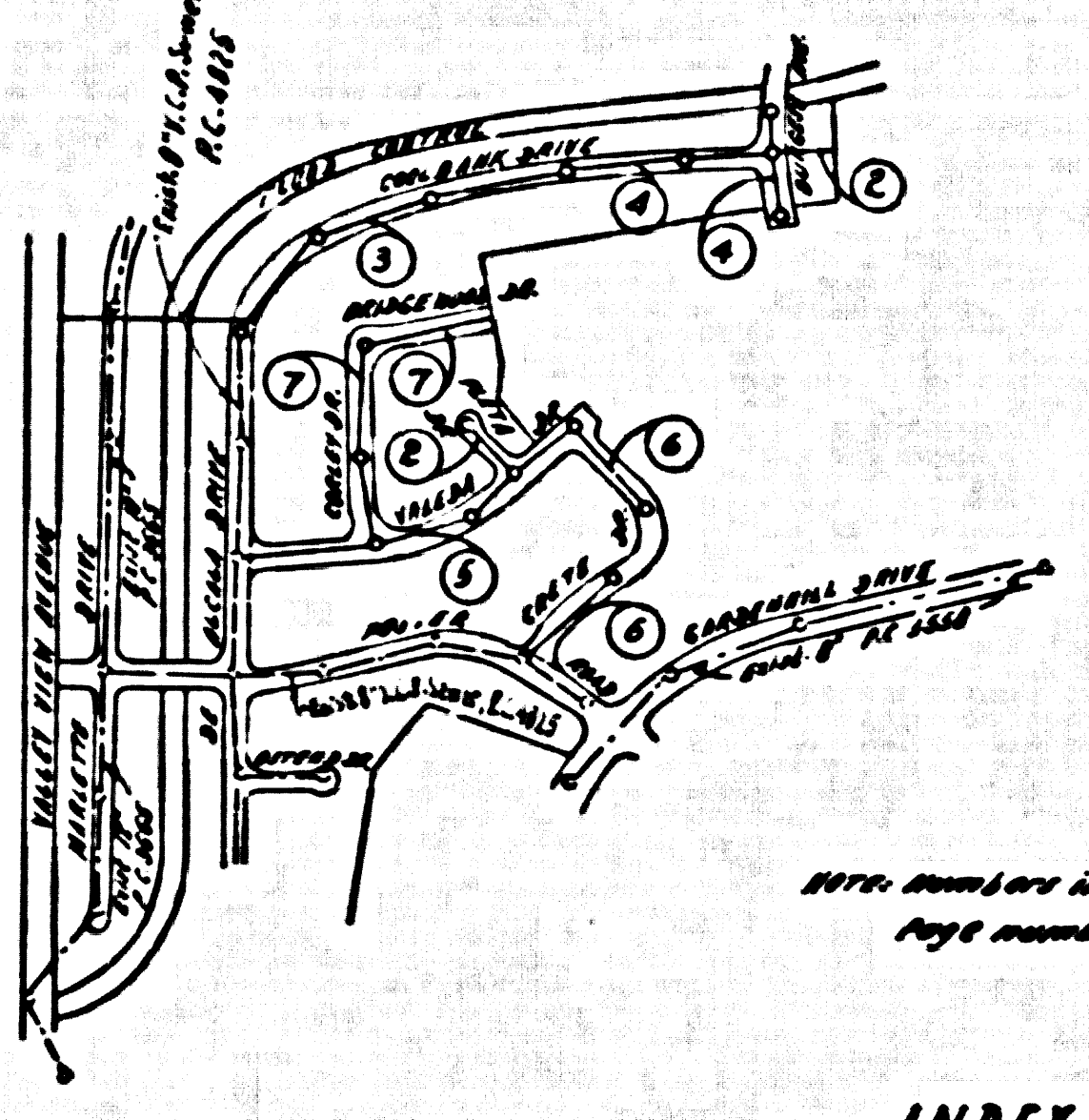


Branch Here: Valley View Ave. and Astor Ave. 100' S. of the E. of Astor Ave. and 10' W. of the E. of Valley View Ave. 10' in concrete 18" below the street surface in a trench cut through the pavement and protected by a cast iron cover marked "County Sanitary Sewer" mounted on the County Survey Monument recorded in R. L. S. Co. 1852-53; R.S. 1705-4 (1852-53); and this Branch Here is located at 77 5778' (N. 88.562) to L. S. Co. 1852-53 and 0.628 to an excavation to connect to L. S. Co. 1852-53.

Note: Lots 104 to 112 incl. served by sewer in Foster Rd. P.C. 4825, Page 6
Lots 93 to 97 incl. served by sewer in De Alvarado P.C. 4825, Page 9



INDEX MAP
TRACT No. 24575
P.C. 4931
SCALE: 1" = 600'

DOUBLE SCALE
NORWALK BLDG. DIST. NO. 4.2

PROFILE ALIGNMENT AND GRADE OF
SANITARY SEWERS P.C. 4931
PAGE 1

TO BE CONSTRUCTED IN
TRACT No. 24575

PRIVATE CONTRACT NO. 4931

W.S. 34
4 SHEETS, 7 PAGES

SCALE: HORIZ. 1" = 60' VERT. 1" = 10' OCT. 1958

PREPARED IN THE OFFICES OF

MCINTIRE & QUIROS INC.

By: *Alan McIntire* 10/6/58
REG. C.E. NO. 3122

FOR LEGEND SEE PLAN NO. S-A-64

- NOTES:
- PROVIDE STAKES ON THE PROPERTY LINE OR PROPERTY LINES PRODUCED AT RIGHT ANGLES TO THE SEWER LINE AT THE CENTER LINE OF EACH MANHOLE.
 - NO REPRESENTATIVE OF THE COUNTY ENGINEER WILL SURVEY OR LAYOUT ANY PORTION OF THE WORK.
 - THE OWNER OR THE AUTHORIZED REPRESENTATIVE SHALL FURNISH THE COUNTY ENGINEER WITH GRADE SHEETS AND STATION FOR ALL HOUSE LATERALS AND T-BRANCHES AND SHALL PROVIDE STAKES FOR THEM AT THEIR PROPER LOCATIONS WITH STATIONING PLAINLY MARKED. ANY CHANGE IN LOCATION SHALL BE REQUESTED BY WRITING BY THE OWNER OR HIS REPRESENTATIVE.
 - NO REVISIONS SHALL BE MADE IN THESE PLANS WITHOUT THE APPROVAL OF THE COUNTY ENGINEER.
 - USE STANDARD MANHOLE FRAMES AND COVERS, S-A-117.
 - USE STANDARD STRUCTURE PIPE EXCEPT AS NOTED.
 - USE CEMENT MORTAR "BEEHIVE JOINT" OR "SPECIAL JOINT" FOR ALL ENTRANCES ONLY FOR JOINTS, AND JOINTS SECTIONAL JOINTS.
 - RESURFACE ALL TRENCH WITHIN PAVED AREA TO MEET L. A. COUNTY ROAD DEPT., OR CALIF. STATE HIGHWAY DEPT. REQUIREMENTS IN ACCORDANCE WITH PERMITS.
 - SPACING FOUR FEET OF SEWER AT POINTS OF INTERFERENCE WITH POLES, S-A-172 CASE III.
 - HOUSE LATERALS TO BE CONSTRUCTED WITH 8" DIA. 12' AT PROPERTY LINE 6" FEET BELOW CURB GRADE EXCEPT AS NOTED.
 - ALL STRUCTURES SHALL BE BUILT TO MEET SPECIFICATIONS, S-A-194.
 - FOR ALUMINUM SEWERS USE THE FORMULA NO. _____ SPEC. SEC. 54
 - MANHOLE TOPS IN UNPAVED AREAS TO BE 6" ABOVE FINISHED GRADE.
 - THE CONTRACTOR SHALL GUARANTEE THE WORKMANSHIP AND SHALL BE RESPONSIBLE FOR THEIR LOCATION.
 - NO STRUCTURE SHALL BE PERMITTED IN FILLED AREAS UNLESS ACCEPTABLE CERTIFICATION IS SUBMITTED TO THE CONSTRUCTION DIVISION OF THE COUNTY ENGINEER'S DEPARTMENT THAT CONSTRUCTION IS GREATER THAN 10'.
 - IF CONSTRUCTION IS LESS THAN 10', THE OWNER MUST BE CHARGED AS SHOWN ON PLAN (SEE S.A. 65).
 - ALL STRUCTURES SHALL BE BUILT TO MEET SPECIFICATIONS, S-A-194, AND SHALL BE REPORTED WITH THE COUNTY ENGINEER, ROOM 201 MAIN AMERICAN BLDG. 310 SO. BROADWAY SUPPLEMENT TO COVER THE COST OF CONSTRUCTION INSPECTION AND RECORD PLANS.
 - APPROVAL OF THIS PLAN BY THE COUNTY OF LOS ANGELES DOES NOT CONSTITUTE A REPRESENTATION AS TO THE ACCURACY OF THE LOCATION OF OR THE EXISTENCE OR NON-EXISTENCE OF ANY UNDERGROUND UTILITY PIPE, OR STRUCTURE WITHIN THE LIMITS OF THIS PROJECT. THIS NOTE APPLIES TO ALL PAGES.
 - IF WORK IS TO BE DONE IN A STATE HIGHWAY, A PERMIT MUST BE OBTAINED FROM THE STATE OF CALIFORNIA, DIVISION OF HIGHWAYS, 120 SOUTH SPRING STREET.

NO CHARGE FOR CONNECTIONS
S. Jorda 10-18-58

REVISION:
ADD VIEW B ON PAGE 2.

REVISED 12-20-58

APPROVED:
J. C. Jorda 10-20-58

NOTE:
GRADES TO WHICH THE IMPROVEMENT IS TO BE CONSTRUCTED ARE SHOWN ON PLANS AND PROFILES. GRADE POINTS FOR TOP OF CURB, CENTER LINE OF STREET, OR CENTER LINE OF ALLEYS ARE SHOWN BY CIRCLES ON PROFILES AT ALL POINTS BETWEEN DESIGNATED POINTS THE GRADE SHALL BE ESTABLISHED SO AS TO CONFORM TO A STRAIGHT LINE BETWEEN SAID DESIGNATED POINTS.
ELEVATIONS ARE IN FEET ABOVE M.S.L. SEE LEGEND SECTION S-A-64.
THE DRAWING AND THE DATA THEREON ARE HEREBY MADE A PART OF THE SPECIFICATIONS.
WORK SHALL BE CONSTRUCTED ACCORDING TO SPECIFICATIONS ON FILE IN THE OFFICE OF THE COUNTY ENGINEER AND SHALL BE INSPECTED ONLY IN THE PRESENCE OF THE COUNTY ENGINEER.
BEFORE WORK CAN BE STARTED, THE CONTRACTOR MUST OBTAIN A PERMIT TO EXCAVATE IN COUNTY SHEETS FROM THE L. A. COUNTY ROAD DEPT., ROOM 201 MAIN AMERICAN BLDG. 310 SO. BROADWAY SUPPLEMENT TO COVER THE COST OF CONSTRUCTION INSPECTION AND RECORD PLANS.
APPROVAL OF THIS PLAN BY THE COUNTY OF LOS ANGELES DOES NOT CONSTITUTE A REPRESENTATION AS TO THE ACCURACY OF THE LOCATION OF OR THE EXISTENCE OR NON-EXISTENCE OF ANY UNDERGROUND UTILITY PIPE, OR STRUCTURE WITHIN THE LIMITS OF THIS PROJECT. THIS NOTE APPLIES TO ALL PAGES.
IF WORK IS TO BE DONE IN A STATE HIGHWAY, A PERMIT MUST BE OBTAINED FROM THE STATE OF CALIFORNIA, DIVISION OF HIGHWAYS, 120 SOUTH SPRING STREET.

COUNTY OF LOS ANGELES, CALIFORNIA

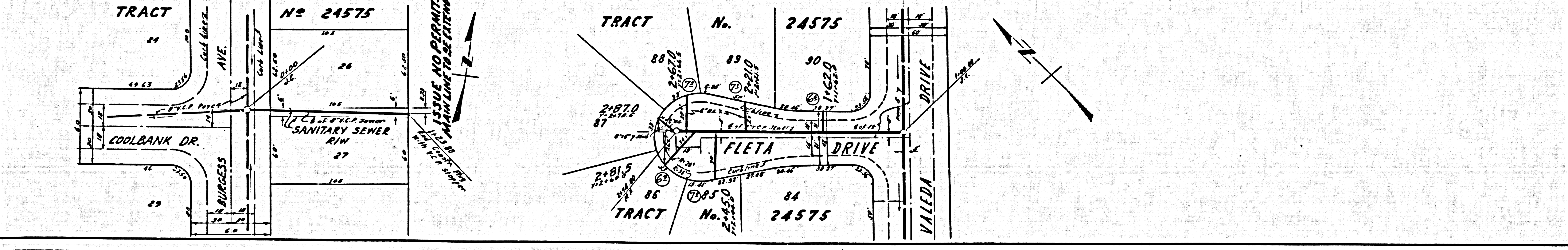
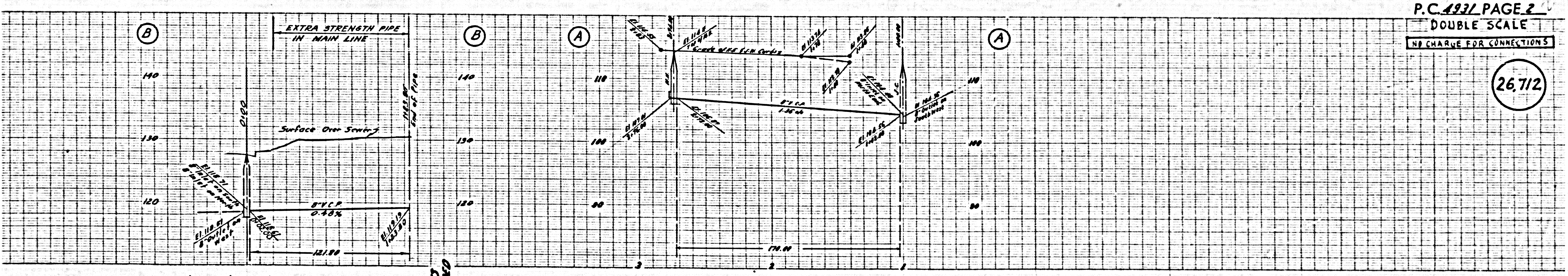
APPROVED, JOHN A. LAMBE, COUNTY ENGINEER

APPROVED, A. M. RAWN, CHIEF ENGINEER

By: *J. C. Jorda* 10-20-58
SANITATION ENGINEER

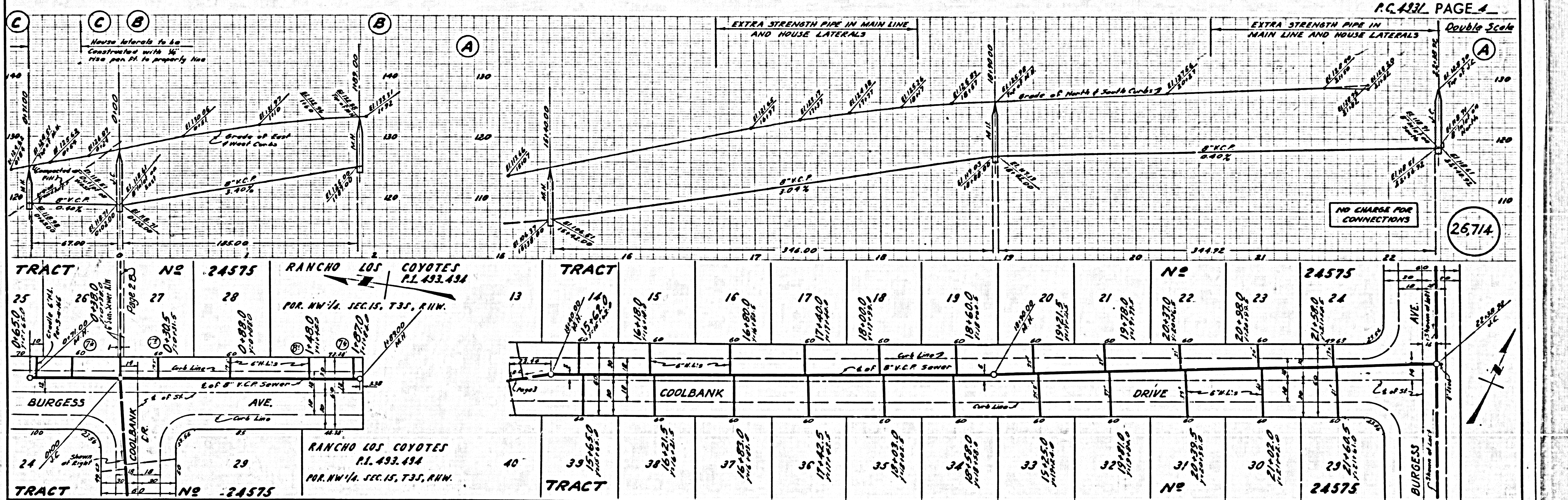
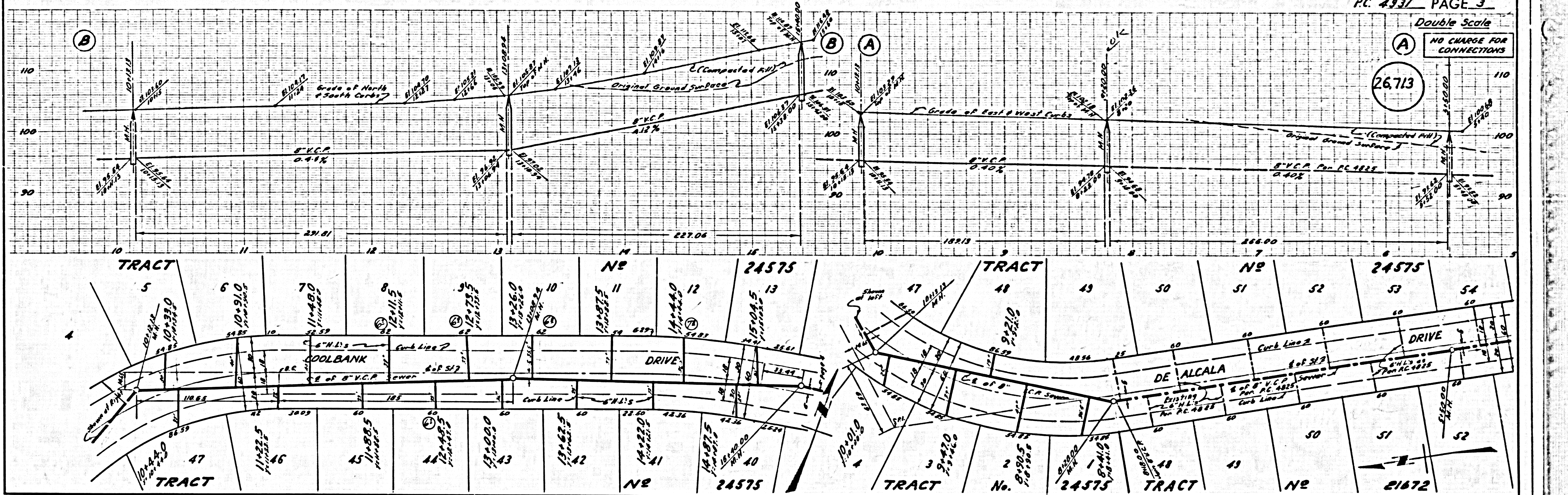
CHECKED BY: *J. C. Jorda* 10-20-58
OFFICE OF COUNTY ENGINEER, REG. C. E. NO. 2306

SUBMITTED BY: *John A. Jorda* 10-20-58
LOS CERRITOS REGIONAL ENGINEER, R.C.E. No. 3871



P.C. 4931 PAGE 2
DOUBLE SCALE
NO CHARGE FOR CONNECTIONS

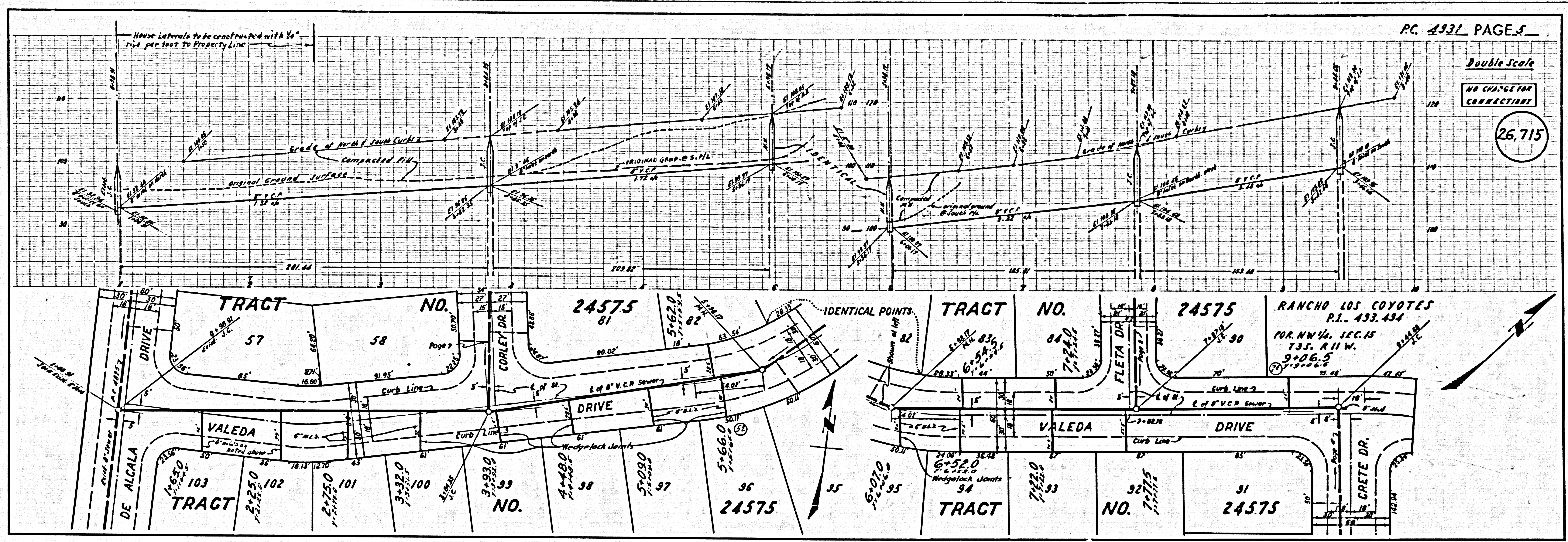
26,712



Double Scale

NO CHARGE FOR CONNECTORS

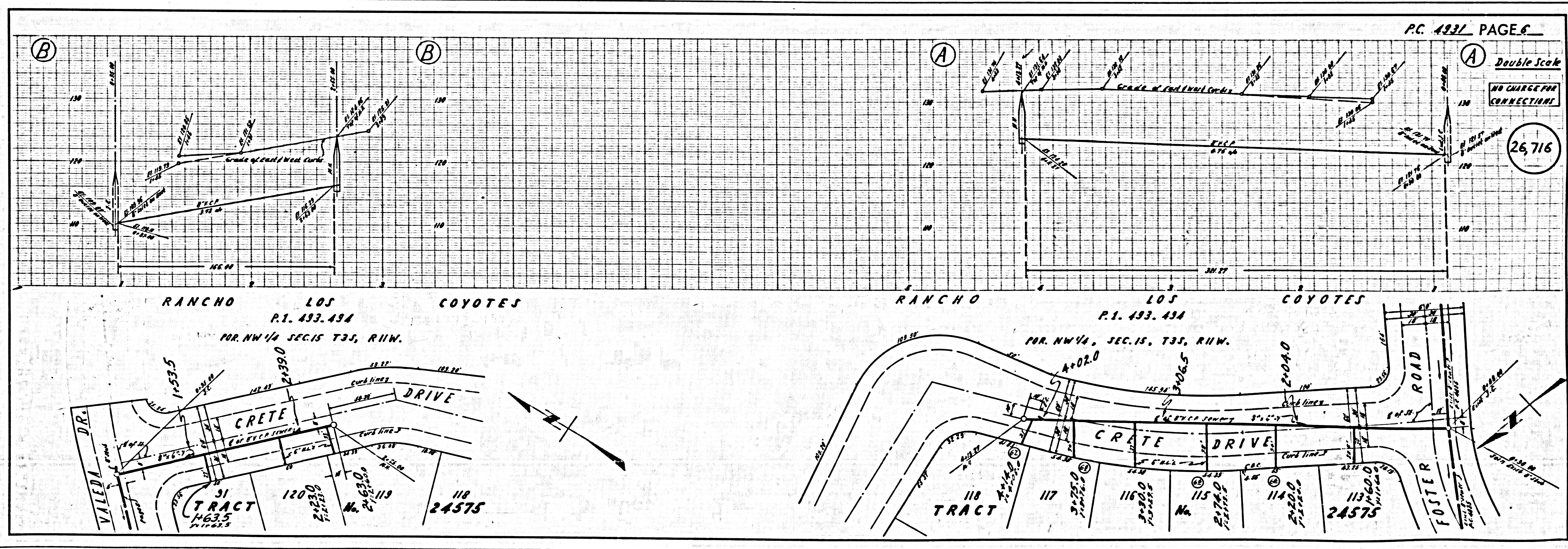
26,715

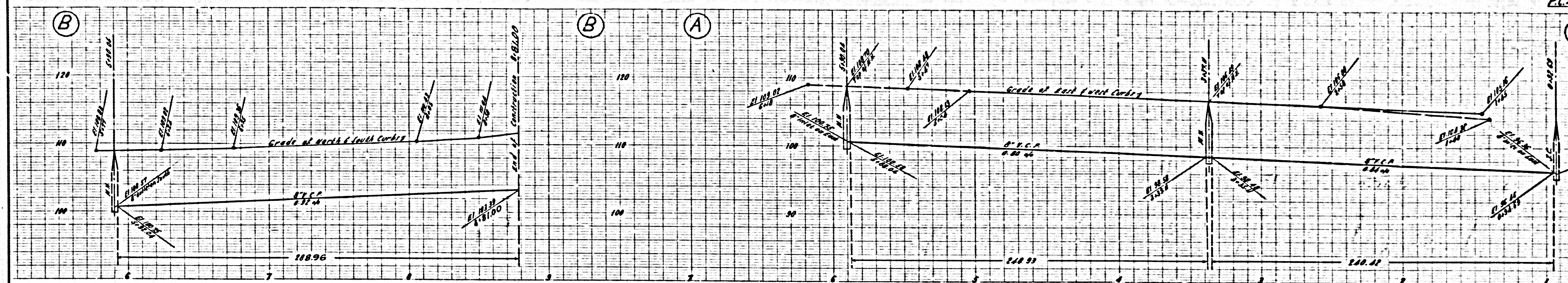


Double Scale

NO CHARGE FOR CONNECTORS

26,716





(A) Double Scale
 NO CHARGE FOR CONNECTIONS
 26,717

