

**WHITTIER BLDG. DIST. NO. 11**

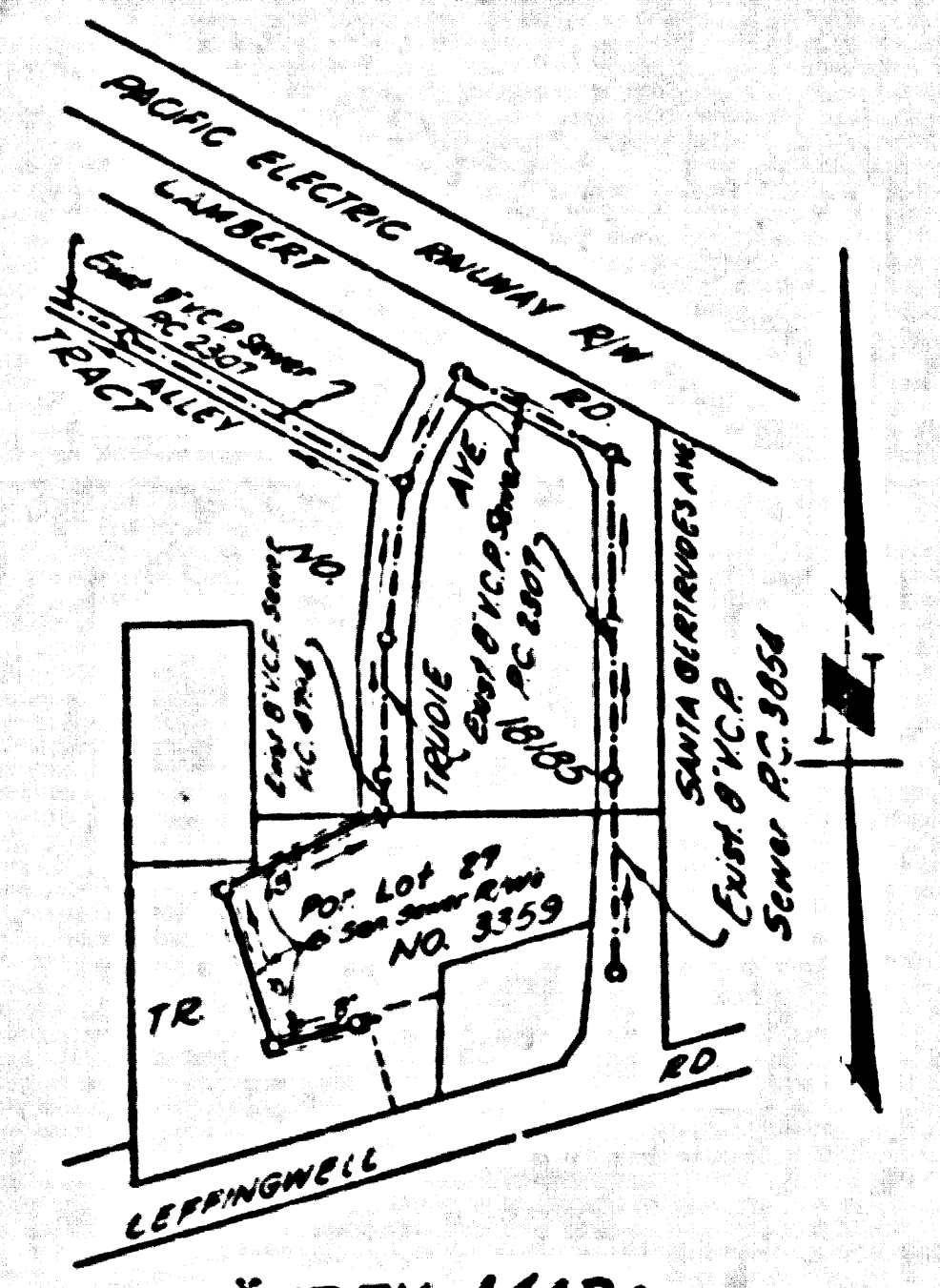
PROFILE ALIGNMENT AND GRADE OF **P.C. 4932**  
**SANITARY SEWERS PAGE 1**  
 TO BE CONSTRUCTED IN  
**TRUDIE AVENUE AND A**  
**SANITARY SEWER R/W** 26.622

PRIVATE CONTRACT NO. 4932  
 W.S. 34

1 SHEET, 2 PAGES  
 SCALE: VERT. 1" = 4' HORIZ. 1" = 20'  
 DATE: **OCTOBER, 1958**  
 PREPARED IN THE OFFICES OF  
**KEMMERER ENGINEERING CO., INC.**

BY Walter C. Kemmerer  
 REG. C. E. NO. 2224  
 FOR LEGEND SEE PLAN NO. S-A-64

- NOTES:**
1. PROFILE STAKES ON THE PROPERTY LINE OR PROPERTY LINES PRODUCED AT RIGHT ANGLES TO THE SEWER LINE AT THE CENTER LINE OF EACH MANHOLE.
  2. NO REPRESENTATIVE OF THE COUNTY ENGINEER WILL SURVEY OR LAY-OUT ANY PORTION OF THE WORK.
  3. THE OWNER OR HIS AUTHORIZED REPRESENTATIVE SHALL FURNISH THE COUNTY ENGINEER WITH GRADE SHEETS AND STATION FOR ALL HOUSE LATERALS AND Y BRANCHES AND SHALL PROVIDE STAKES FOR THEM AT THREE FEET LOCATIONS WITH STATIONING. THIS PLANETARY SHARED. ANY CHANGE IN LOCATION SHALL BE REQUESTED IN WRITING BY THE OWNER OR HIS REPRESENTATIVE.
  4. TO REVISIONS SHALL BE MADE IN THESE PLANS WITHOUT THE APPROVAL OF THE COUNTY ENGINEER.
  5. USE STANDARD MANHOLE FRAMES AND COVERS, S.A. 117, EXCEPT AS NOTED.
  6. USE STANDARD STRENGTH PIPE EXCEPT AS NOTED.
  7. USE CHISEL POINTS, "HARD-LEAD" OR "HARD-SEALED" FOR ALL STYPED GLASS PIPE (S.P.P.) PER SPEC. SEC. 20.8 & 20.9.
  8. RESURFACE ALL TRENCHES WITHIN PAVED AREA TO MEET L. A. COUNTY ROAD DEPT. OR CALIF. STATE HIGHWAY DEPT. REQUIREMENTS IN ACCORDANCE WITH PERMITS.
  9. ENCASE FOUR FEET OF SEWER AT POINTS OF INTERFERENCE WITH POLES, S.A. 175, CASE II.
  10. ALL STRUCTURES SHALL BE BRICK SEWER STRUCTURES, S-A 104, EXCEPT AS NOTED.
  11. FOR ALLOWABLE LEAKAGE TEST USE FORMULA NO. 1, SPEC. SEC. 54.
  12. MANHOLES SHALL BE UNIMPROVED EXCEPT AS SHOWN TO BE OF APPROVED DESIGN.
  13. THE CONTRACTOR SHALL NOTIFY THE CONSTRUCTION & STORM DRAIN DIVISION BY TELEPHONE OR BY MAIL AT LEAST 24 HOURS BEFORE STARTING ANY WORK UNDER THIS CONTRACT.



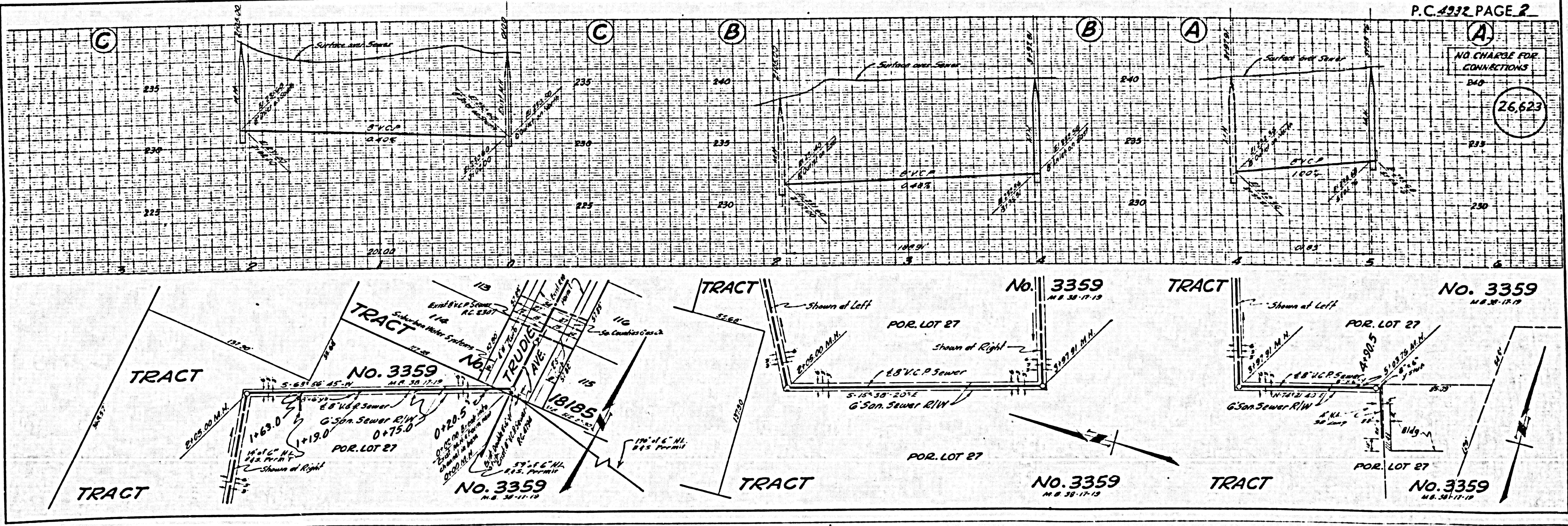
INDEX MAP  
 P.C. 4932 Scale 1" = 500'

B.M. 5 V 3466 INTER-COUNTY SUR. B.M. 4-1  
 L.A. CO. SURV. MON. 401' SW. Q. SW. Q. 4  
 EAK OF U.P.P. 01.58 Q. 4  
 LEFFINGWELL R. (BASE LINE) Elev. 253.916 (1955)

**NO CHARGE FOR CONNECTIONS**  
*L. Carter 11-25-58*

**NOTE:**  
 CHANGES TO WHICH THE IMPROVEMENT IS TO BE CONSTRUCTED ARE SHOWN ON PLANS AND PROFILES. GRADE POINTS FOR TOP OF CURBS, CENTER LINE OF STREETS OR CENTER LINE OF ALLEYS ARE SHOWN BY CIRCLES ON PROFILES. AT ALL POINTS BETWEEN DESIGNATED POINTS THE GRADE SHALL BE ESTABLISHED SO AS TO CONFORM TO A STRAIGHT LINE DRAWN BETWEEN SAID DESIGNATED POINTS.  
 ELEVATIONS ARE IN FEET ABOVE U.S.C. & G.S. MEAN SEA LEVEL, UNLESS OTHERWISE SPECIFIED.  
 THIS DRAWING AND THE DATA HEREON ARE HEREBY MADE A PART OF THE SPECIFICATIONS.  
 BEFORE WORK CAN BE STARTED, THE CONTRACTOR MUST OBTAIN A PERMIT TO EXCAVATE IN COUNTY STREETS FROM THE COUNTY ROAD DEPT. AND MAKE A DEPOSIT WITH THE COUNTY ENGINEER ROOM 324 PAM AMERICAN BUILDING, 120 S.O. BROADWAY, SUFFICIENT TO COVER THE COST OF CONSTRUCTION INSPECTION AND RECORD PLANS.  
 APPROVAL OF THIS PLAN BY THE COUNTY OF LOS ANGELES DOES NOT CONSTITUTE A REPRESENTATION AS TO THE ACCURACY OF THE LOCATION OF OR THE EXISTENCE OR NON-EXISTENCE OF ANY UNDERGROUND UTILITY PIPE OR STRUCTURE WITHIN THE LIMITS OF THIS PROJECT. THIS NOTE APPLIES TO ALL PAGES.  
 IF WORK IS TO BE DONE IN A STATE HIGHWAY, A PERMIT MUST BE OBTAINED FROM THE STATE OF CALIFORNIA, DIVISION OF HIGHWAYS, 120 SOUTH SPRING STREET.

COUNTY OF LOS ANGELES, CALIFORNIA  
 APPROVED, JOHN A. LAMBE, COUNTY ENGINEER  
 APPROVED, A. M. RAWLIN, CHIEF ENGINEER  
 BY Walter C. Kemmerer Walter C. Kemmerer  
 SANITARIAN REG. C. E. NO. 2224 OFFICE ENGINEER  
 CHECKED BY W.C. White 12-2-58  
 OFFICE OF COUNTY ENGINEER, REG. C. E. NO. 3406



P.C. 4932 PAGE 2

**NO CHARGE FOR CONNECTIONS**  
26.623